



# CONCRETE RESTORATION SYSTEMS

- Patching and Skimcoating Compounds
- Concrete Repair Mortars
- Construction Grouts
- Exterior Finishing
- Waterproofing
- Epoxy Adhesives
- Admixtures
- Corrosion Protection
- Coatings and Sealers
- Sealants and Joint Fillers
- Moisture-Control Product
- Cementitious Flooring
- Epoxy Flooring
- Cure and Seals
- Densifiers
- Self-Leveling Underlayments and Primers
- Accessories



# 16 PRODUCT LINES OF THE U.S.A.

|                                                          |                                                                                |                                                 |                                                      |                                                    |                                               |
|----------------------------------------------------------|--------------------------------------------------------------------------------|-------------------------------------------------|------------------------------------------------------|----------------------------------------------------|-----------------------------------------------|
| <b>1</b><br>Tile & Stone Installation Systems            | <b>2</b><br><i>UltraCare</i> Stone, Tile, Grout Care and Maintenance Solutions | <b>3</b><br>Floor Covering Installation Systems | <b>4</b><br>Products for Sports Flooring             | <b>5</b><br>Products for Wood Flooring             | <b>6</b><br>Profiles for Floors and Coverings |
| <b>7</b><br>Skirting Boards                              | <b>8</b><br>Raised Floors                                                      | <b>9</b><br>Concrete Restoration Systems        | <b>10</b><br>Cementitious and Resin Flooring Systems | <b>11</b><br>Products for Structural Strengthening | <b>12</b><br>Waterproofing Systems            |
| <b>13</b><br>Products for Underground Construction (UTT) | <b>14</b><br>Admixtures for Concrete                                           | <b>15</b><br>Cement Additives                   | <b>16</b><br>Products for the Marine Industry        |                                                    |                                               |

## TABLE OF CONTENTS

CONCRETE  
RESTORATION  
SYSTEMS



|                                              |     |                                                |    |
|----------------------------------------------|-----|------------------------------------------------|----|
| Introduction.....                            | 2-3 | <b>Construction Grouts</b>                     |    |
| Technology Logos Index.....                  | 3   | <i>Planigrout</i> <sup>®</sup> PT .....        | 11 |
| <b>PRODUCT INFORMATION</b>                   |     | <i>Planigrout</i> 712 .....                    | 11 |
| <b>Patching and Skimcoating Compounds</b>    |     | <i>Planigrout</i> 728 .....                    | 11 |
| <i>Mapecem</i> <sup>®</sup> Quickpatch ..... | 4   | <i>Planigrout</i> 740 .....                    | 12 |
| <i>Tilt Finish</i> <sup>™</sup> .....        | 4   | <i>Planigrout</i> 755 .....                    | 12 |
| <b>Concrete Repair Mortars</b>               |     | <i>Planigrout</i> 350 .....                    | 12 |
| <i>Topcem</i> <sup>™</sup> Pronto .....      | 4   | <i>Planigrout</i> 310 .....                    | 13 |
| <i>Topcem</i> Premix.....                    | 5   | <b>Exterior Finishing</b>                      |    |
| <i>Mapecem</i> 102.....                      | 5   | <i>Concrete Renew</i> <sup>™</sup> .....       | 13 |
| <i>Mapecem</i> 202.....                      | 5   | <i>Concrete Renew</i> Fine.....                | 13 |
| <i>Planitop</i> <sup>®</sup> FD.....         | 6   | <i>Planitop</i> Basecoat.....                  | 14 |
| <i>Planitop</i> EL.....                      | 6   | <b>Waterproofing</b>                           |    |
| <i>Planitop</i> X.....                       | 6   | <i>Mapelast</i> <sup>®</sup> .....             | 14 |
| <i>Planitop</i> XS .....                     | 7   | <i>Mapelast</i> Smart.....                     | 14 |
| <i>Planitop</i> 11 .....                     | 7   | <i>Planiseal</i> <sup>®</sup> CR1 .....        | 15 |
| <i>Planitop</i> 11 SCC .....                 | 7   | MAPEI LMR Fabric .....                         | 15 |
| <i>Planitop</i> 12 SR.....                   | 8   | <i>Planiseal</i> 288 .....                     | 15 |
| <i>Planitop</i> 15.....                      | 8   | <i>Planiseal</i> 88 .....                      | 16 |
| <i>Planitop</i> 18.....                      | 8   | <i>Planiseal</i> Plug .....                    | 16 |
| <i>Planitop</i> 18 ES.....                   | 9   | <i>Idrostop</i> <sup>™</sup> .....             | 16 |
| <i>Planitop</i> 18 TG.....                   | 9   | <i>Mapetex</i> <sup>™</sup> Sel.....           | 17 |
| <i>Planitop</i> 200.....                     | 9   | <i>Mapeband</i> <sup>™</sup> TPE.....          | 17 |
| <i>Planitop</i> 23.....                      | 10  | <i>Resfoam</i> <sup>®</sup> HB 45.....         | 17 |
| <i>Planitop</i> 25.....                      | 10  | <i>Resfoam</i> HL 35.....                      | 18 |
| <i>Planitop</i> Shotcrete.....               | 10  | <i>Resfoam</i> SS 75.....                      | 18 |
|                                              |     | <i>Resfoam</i> PF .....                        | 18 |
|                                              |     | <b>Epoxy Adhesives</b>                         |    |
|                                              |     | <i>Planibond</i> <sup>®</sup> EBA.....         | 19 |
|                                              |     | <i>Planibond</i> SBA.....                      | 19 |
|                                              |     | <i>Planibond</i> SBA SlowSet.....              | 19 |
|                                              |     | <i>Planibond</i> AE.....                       | 20 |
|                                              |     | <i>Planibond</i> AE Fast.....                  | 20 |
|                                              |     | <i>Epojet</i> <sup>™</sup> .....               | 20 |
|                                              |     | <i>Epojet</i> LV.....                          | 21 |
|                                              |     | <i>Epojet</i> SLV.....                         | 21 |
|                                              |     | <i>Planibond</i> Hi-Mod Gel.....               | 21 |
|                                              |     | <i>Planibond</i> Hi-Mod Gel LPL.....           | 22 |
|                                              |     | <b>Admixtures</b>                              |    |
|                                              |     | <i>Planicrete</i> <sup>®</sup> AC.....         | 22 |
|                                              |     | <i>Planicrete</i> UA.....                      | 22 |
|                                              |     | <i>Planitop</i> Accelerator .....              | 23 |
|                                              |     | <i>Mapecure</i> <sup>™</sup> SRA.....          | 23 |
|                                              |     | <b>Corrosion Protection</b>                    |    |
|                                              |     | <i>Mapefer</i> <sup>™</sup> 1K.....            | 23 |
|                                              |     | <i>Planibond</i> 3C.....                       | 24 |
|                                              |     | <i>Mapeshield</i> <sup>™</sup> I .....         | 24 |
|                                              |     | <i>Mapeshield</i> CI 100.....                  | 24 |
|                                              |     | <i>Mapeshield</i> CI 110.....                  | 25 |
|                                              |     | <b>Coatings and Sealers</b>                    |    |
|                                              |     | <i>Elastocolor</i> <sup>®</sup> Primer WB..... | 25 |
|                                              |     | <i>Elastocolor</i> Primer AR.....              | 25 |
|                                              |     | <i>Elastocolor</i> Paint .....                 | 26 |
|                                              |     | <i>Elastocolor</i> Flex.....                   | 26 |



## A WORLDWIDE LEADER

Originally established in 1937, today MAPEI is a privately owned global corporation headquartered in Milan, Italy, with 102 subsidiaries in 57 countries and 90 plants in 35 nations. The company specializes in manufacturing chemical products for building, including waterproofing products, specialty mortars and admixtures for concrete, products to restore historic buildings, and decorative and protective coatings for concrete surfaces. In addition, MAPEI is the world leader in the manufacturing of mortars, grouts, adhesives and complementary products for installing all types of floor and wall coverings. MAPEI Corporation, the division responsible for supporting the North American markets, is based in Deerfield Beach, Florida, and employs over 1,500 team members – ranging from Manufacturing and R&D to Technical Services and Sales. The Canadian subsidiary MAPEI Inc. supports those efforts with about 360 additional employees.



|                                                |    |                                                |    |                                                     |    |
|------------------------------------------------|----|------------------------------------------------|----|-----------------------------------------------------|----|
| <i>Elastocolor Coat DOT-MOT</i> .....          | 26 | <i>Mapectex Primer</i> .....                   | 35 | <b>Densifiers</b>                                   |    |
| <i>Elastocolor Coat</i> .....                  | 27 | <i>Mapectex P2 SL</i> .....                    | 36 | <i>Mapectex Hard FS</i> .....                       | 43 |
| <i>Elastocolor Texture</i> .....               | 27 | <i>Mapectex P2 NS</i> .....                    | 36 | <i>Mapectex Hard LI</i> .....                       | 43 |
| <i>Mapectcoat™ Deck T</i> .....                | 27 | <b>Moisture-Control Product</b>                |    | <i>Mapectex Hard SB</i> .....                       | 43 |
| <i>Mapectcoat Deck S</i> .....                 | 28 | <i>Planiseal MB</i> .....                      | 36 | <i>Mapectex Hard SI</i> .....                       | 44 |
| <i>Mapectfloor™ Filler</i> .....               | 28 | <b>Cementitious Flooring</b>                   |    | <b>Self-Leveling Underlayments and Primers</b>      |    |
| <i>Mapectfloor Finish 58 W</i> .....           | 28 | <i>Ultratop®</i> .....                         | 37 | <i>Planilevel™ 360</i> .....                        | 44 |
| <i>Mapectfloor Finish 59 W</i> .....           | 29 | <i>Ultratop Loft F</i> .....                   | 37 | <i>Planilevel 420</i> .....                         | 44 |
| <i>Mapectfloor Finish 630</i> .....            | 29 | <i>Ultratop Loft W</i> .....                   | 37 | <i>Planilevel 450</i> .....                         | 45 |
| <i>Primer SN™</i> .....                        | 29 | <i>Primer Grip™ White</i> .....                | 38 | <i>Planilevel 500</i> .....                         | 45 |
| <i>Primer SN Fast</i> .....                    | 30 | <i>Primer LT™</i> .....                        | 38 | <i>Planilevel 560</i> .....                         | 45 |
| <i>Mapectfloor PU Primer</i> .....             | 30 | <i>Mapelux™ Opaca</i> .....                    | 38 | <i>Primer L™</i> .....                              | 46 |
| <i>Mapectfloor PU 400 FC</i> .....             | 30 | <i>Ultratop Base Coat</i> .....                | 39 | <i>Primer T™</i> .....                              | 46 |
| <i>Mapectfloor Finish 415 NA</i> .....         | 31 | <i>Ultratop Easycolor</i> .....                | 39 | <i>Mapelath™</i> .....                              | 46 |
| <i>Mapectfloor Finish 450</i> .....            | 31 | <i>Ultratop SP</i> .....                       | 39 | <b>Accessories</b>                                  |    |
| <i>Planiseal Traffic Coat</i> .....            | 31 | <b>Epoxy Flooring</b>                          |    | <i>MAPEI Self-Leveling Mixing Kit</i> .....         | 47 |
| <i>Planiseal Traffic Coat FS</i> .....         | 32 | <i>Mapectfloor I 302 SL</i> .....              | 40 | <i>MAPEI Self-Leveling Mixing Barrel Cart</i> ..... | 47 |
| <i>Planiseal SLV Hi-Mod</i> .....              | 32 | <i>Mapectfloor I 900</i> .....                 | 40 | <i>MAPEI Self-Leveling Mixing Barrel</i> .....      | 47 |
| <i>Planiseal LVB</i> .....                     | 32 | <b>Cure and Seals</b>                          |    | <i>MAPEI Self-Leveling Spike Roller</i> .....       | 48 |
| <i>Planiseal WR</i> .....                      | 33 | <i>Mapectcure AP</i> .....                     | 40 |                                                     |    |
| <i>Planiseal WR 40</i> .....                   | 33 | <i>Mapectcure CS WB</i> .....                  | 41 |                                                     |    |
| <i>Planiseal WR 100</i> .....                  | 33 | <i>Mapectcure CS</i> .....                     | 41 |                                                     |    |
| <i>Mapectcrete® Protector FF</i> .....         | 34 | <i>Mapectcure DR and Mapectcure DR 1</i> ..... | 41 |                                                     |    |
| <b>Sealants and Joint Fillers</b>              |    | <i>Mapectcure UV</i> .....                     | 42 |                                                     |    |
| <i>Mapectflex® EMC-1</i> .....                 | 34 | <i>Mapectcure UV WB</i> .....                  | 42 |                                                     |    |
| <i>Mapectflex P1 FT</i> .....                  | 34 | <i>Mapectcrete Film</i> .....                  | 42 |                                                     |    |
| <i>Mapectflex Joint Filler EP 90/50</i> .....  | 35 |                                                |    |                                                     |    |
| <i>Mapectflex Joint Filler PO 95/100</i> ..... | 35 |                                                |    |                                                     |    |



## SUPERIOR PRODUCTS

### A Complete Range of Products

MAPEI produces the most innovative products for the construction market. More than 7,000 products globally (adhesives, sealants, mortars, admixtures, latex, etc.) are manufactured in MAPEI's plants, which produce the world's most complete range of building products. Diversified, high-quality chemical products – from powdered adhesives, to liquid and paste products, to polymers – are created to meet the needs of more than 70,000 customers around the world.

### Quality Control

MAPEI is an ISO 9001-2000 certified company. Its products are produced according to exacting standards, strictly adhering to process and procedural guidelines with documented compliance. This rigid production format is vigilantly followed to ensure that every product is produced uniformly from batch to batch.



## PROFESSIONAL SUPPORT NETWORK

### Knowledgeable Sales Force

MAPEI offers the largest, most highly trained sales force within the industry to serve your needs for product application/installation recommendations. Its sales representatives are focused on supporting you with product knowledge, product demonstrations, product information, marketing support materials and other relevant tools to help you generate sales.

### Technical Expertise

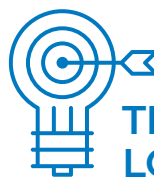
An in-house Technical Services Call Center responds to customers' telephone inquiries with answers to installation challenges in real time. In addition, MAPEI can offer field support for job startups, product training and on-site problem resolution.



### Customer Service Plus

MAPEI's standards for customer service are best-in-class. Our leadership includes such service innovations as:

- Customer-friendly, efficient processes
- One-call resolution
- Employee commitment to effective customer dialog



## TECHNOLOGY LOGOS INDEX



Corrosion Inhibitor Enhanced products feature proprietary additives that fortify the passivation layer on embedded reinforcing steel, enhancing its resistance to corrosion.



CO<sub>2</sub> emissions measured throughout the product's life cycle are fully offset through the acquisition of third-party-certified carbon credits that support climate-mitigation projects.

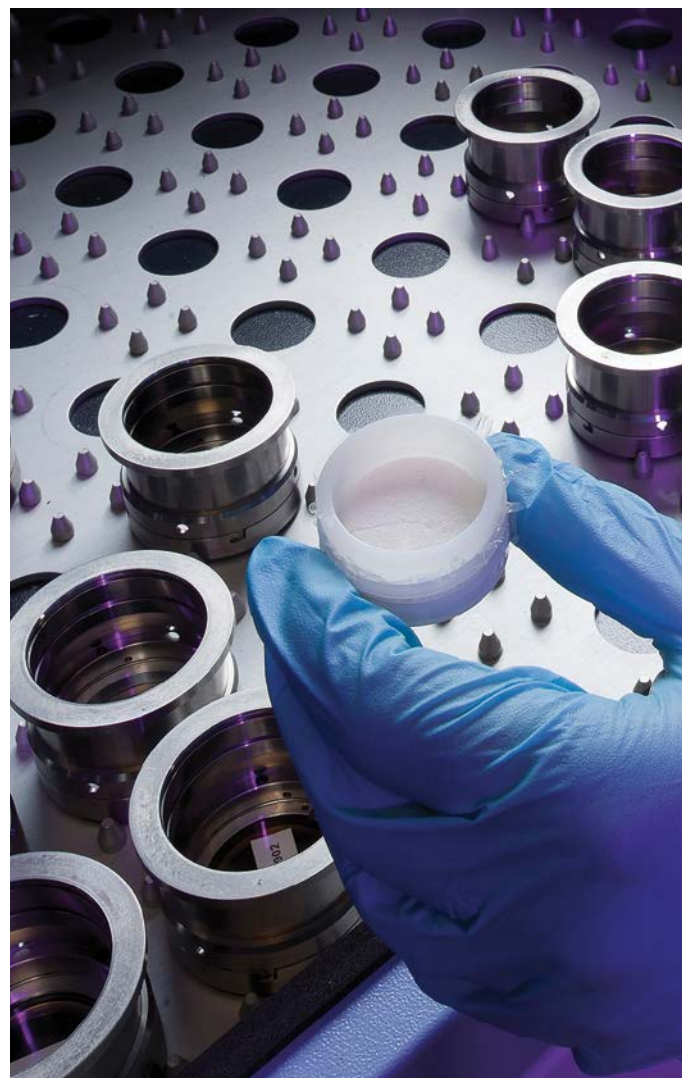
### Innovative Research & Development

We have always been highly committed to this sector. Our research scientists work within a global network comprising 32 centers, with our Corporate Research Centre in Milan acting as a hub to coordinate the activities of all the other centers and as a central analysis laboratory. The United States has four centers, and Canada has one. All equipped with cutting-edge equipment, the centers collaborate continuously with universities as well as scientific and industrial research institutes.

The research and development laboratories also provide support for our Technical Services Division to help provide solutions for even the most complex requests from our clients. Working alongside these centers are our quality-control laboratories, which are present in all the MAPEI Group's production facilities.

### Best-Backed<sup>SM</sup> Warranty Program

To bring it all together, MAPEI complements the industry's best products with simple, easy-to-understand requirements for a variety of warranty options.





**Mapecem® Quickpatch**

**High-Performance Concrete Patch**

Mapecem Quickpatch is a high-performance, fast-setting, cementitious material used for the patching of concrete surfaces. This product features a very low emission of volatile organic compounds and includes an offset of greenhouse gas emissions.

**Tilt Finish™**

**Smoothing and Finishing Compound for Concrete Surfaces**

Tilt Finish is a versatile, fast-setting, polymer-modified material utilizing a proprietary blend of cements and additives. It is ideal for producing a smooth finish on concrete surfaces before application of paints or coatings.

**Topcem™ Pronto**

**Extended-Working-Time Screed Mortar**

Topcem Pronto is a single-component, extended-working-time screedable mortar.

|      | Product Code | Packaging              |
|------|--------------|------------------------|
| U.S. | 1190205      | Bag: 10 lbs. (4.54 kg) |
|      | 1190211      | Bag: 25 lbs. (11.3 kg) |
|      | 1190223      | Bag: 50 lbs. (22.7 kg) |

|      | Product Code | Packaging              |
|------|--------------|------------------------|
| U.S. | 1181809      | Bag: 20 lbs. (9.07 kg) |

|      | Product Code | Packaging              |
|------|--------------|------------------------|
| U.S. | 0243325      | Bag: 55 lbs. (24.9 kg) |





## Topcem™ Premix

### Accelerated-Cure Screed

*Topcem Premix* is an accelerated-cure screed mortar suitable for bonded as well as unbonded applications. *Topcem Premix* can easily be screeded or sloped, and has the workability and working time of conventional screed mortars.

|      | Product Code | Packaging              |
|------|--------------|------------------------|
| U.S. | 0240523      | Bag: 50 lbs. (22.7 kg) |



## Mapecem® 102

### Medium-Build, One-Component, Fast-Setting Mortar

*Mapecem 102* is a one-component, shrinkage-compensated, polymer-modified, fast-setting cementitious mortar with a corrosion inhibitor and silica fume. *Mapecem 102* is intended for the renovation and topping of horizontal concrete surfaces.

|      | Product Code | Packaging              |
|------|--------------|------------------------|
| U.S. | 1182225      | Bag: 55 lbs. (24.9 kg) |



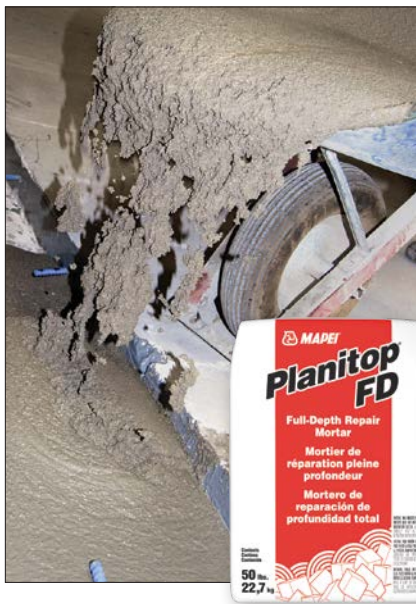
## Mapecem® 202

### Medium-Build, Two-Component, Fast-Setting Mortar

*Mapecem 202* is a two-component, shrinkage-compensated, polymer-modified, fast-setting cementitious mortar with a corrosion inhibitor.

|      | Product Code | Packaging                            |
|------|--------------|--------------------------------------|
| U.S. | 1182328      | Part A, Bag: 55 lbs. (24.9 kg)       |
|      | 1182428      | Part B, Jug: 0.71 U.S. gal. (2.69 L) |





**Planitop® FD**

**Full-Depth Repair Mortar**

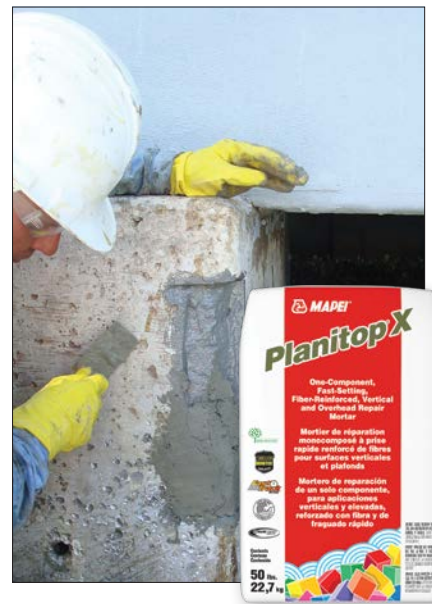
Planitop FD is a one-part, shrinkage-compensated, cementitious, flowable mortar for a variety of repairs. Planitop FD contains a corrosion inhibitor and is suited for form-and-pour applications as well as flatwork.



**Planitop® EL**

**Self-Leveling, Portland-Cement-Based Topping**

Planitop EL is a self-leveling, Portland-cement-based topping that can be used as a wear surface on interior and elevated exterior areas where worn concrete is an issue. Planitop EL can be installed to provide a smooth troweled appearance or can be polished to provide a more decorative appeal.



**Planitop® X**

**One-Component, Fast-Setting, Fiber-Reinforced, Vertical and Overhead Repair Mortar**

Planitop X is a one-component, fiber-reinforced, shrinkage-compensated, high-early-strength, fast-setting, polymer-modified, high-build cementitious repair mortar with a corrosion inhibitor.

|      | Product Code | Packaging                   |
|------|--------------|-----------------------------|
| U.S. | 2758623      | Bag: 50 U.S. lbs. (22.7 kg) |

|      | Product Code | Packaging              |
|------|--------------|------------------------|
| U.S. | 2759923      | Bag: 50 lbs. (22.7 kg) |

|      | Product Code | Packaging               |
|------|--------------|-------------------------|
| U.S. | 2757423      | Bag: 50 lbs. (22.7 kg)  |
|      | 2757405      | Bag: 10 lbs. (4.54 kg)  |
|      | 2757423BK    | Pail: 50 lbs. (22.7 kg) |







### Planitop® XS

#### One-Component, Fast-Setting, Extended-Working-Time, Vertical and Overhead Repair Mortar

Planitop XS is an extended-working-time variation of Planitop X. Shrinkage-compensated, fiber-reinforced, polymer-modified and containing a proprietary corrosion inhibitor, Planitop XS features Planitop X's outstanding workability and versatility. This product features a very low emission of volatile organic compounds and includes an offset of greenhouse gas emissions.



### Planitop® 11

#### Pre-Extended, Pumpable and Pourable Concrete Mix

Planitop 11 is a one-component, pre-extended, cementitious, pumpable and pourable concrete mix for full-depth concrete repairs in above-, below- and on-grade applications. Designed for large-volume repairs with application thicknesses of 1" (2.5 cm) to full depth, Planitop 11 is suitable for form-and-pour and form-and-pump applications. It is ideal for repairs on horizontal, vertical and overhead surfaces in applications such as tunnels, bridges, dams, parking garages, balcony edges and columns.



### Planitop® 11 SCC

#### Self-Consolidating Concrete Mix with Corrosion Inhibitor

Planitop 11 SCC is a one-component, cementitious, self-consolidating concrete mix with silica fume and a corrosion inhibitor for full-depth structural concrete repairs in above-, below- and on-grade applications.

|      | Product Code         | Packaging                                         |
|------|----------------------|---------------------------------------------------|
| U.S. | 2757323<br>2757323BK | Bag: 50 lbs. (22.7 kg)<br>Pail: 50 lbs. (22.7 kg) |

|      | Product Code | Packaging              |
|------|--------------|------------------------|
| U.S. | 2756736      | Bag: 80 lbs. (36.3 kg) |

|      | Product Code | Packaging              |
|------|--------------|------------------------|
| U.S. | 2756829      | Bag: 65 lbs. (29.5 kg) |





### Planitop® 12 SR

#### Sulfate-Resistant, Vertical, Overhead and Horizontal Repair Mortar with Silica Fume

*Planitop 12 SR* is a sulfate-resistant, one-component, shrinkage-compensated, cementitious repair mortar. *Planitop 12 SR* is fiber-reinforced and contains both silica fume and a corrosion inhibitor, and is intended for the repair of vertical, overhead and horizontal concrete surfaces.

|      | Product Code | Packaging              |
|------|--------------|------------------------|
| U.S. | 2759525      | Bag: 55 lbs. (24.9 kg) |

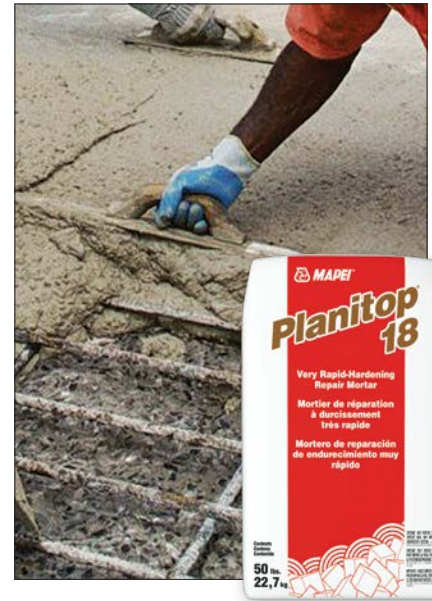


### Planitop® 15

#### Form-and-Pour, One-Component Repair Mortar

*Planitop 15* is a one-component, shrinkage-compensated, cementitious, fiber-reinforced, fluid mortar. *Planitop 15* contains a corrosion inhibitor and silica fume, and is well-suited for form-and-pour and form-and-pump applications where high early strength and flowability are required.

|      | Product Code | Packaging              |
|------|--------------|------------------------|
| U.S. | 2757925      | Bag: 55 lbs. (24.9 kg) |



### Planitop® 18

#### Very Rapid-Hardening Repair Mortar

*Planitop 18* is a very rapid-hardening repair mortar that exhibits high early strength and provides a quick return to service.

|      | Product Code | Packaging              |
|------|--------------|------------------------|
| U.S. | 2757523      | Bag: 50 lbs. (22.7 kg) |





### Planitop® 18 ES

#### Very Rapid-Hardening Repair Mortar with Extended Working Time

Planitop 18 ES is a one-component, high-early-strength, cementitious repair mortar, with a corrosion inhibitor, that has the very rapid-hardening characteristics of Planitop 18 but with an extended set and working time.

|      | Product Code        | Packaging                                         |
|------|---------------------|---------------------------------------------------|
| U.S. | 2757623<br>2757623P | Bag: 50 lbs. (22.7 kg)<br>Pail: 50 lbs. (22.7 kg) |



### Planitop® 18 TG

#### Very Rapid-Hardening, Trowel-Grade, High-Early-Strength Repair Mortar

Planitop 18 TG is a one-component, shrinkage-compensated, very rapid-hardening, trowel-grade, cementitious repair mortar with a corrosion inhibitor. Planitop 18 TG gains strength rapidly and is particularly suited for all horizontal concrete repairs from 1/2" to 2" (12 mm to 5 cm) thickness when applied neat and up to 8" (20 cm) when extended with aggregate.

|      | Product Code | Packaging              |
|------|--------------|------------------------|
| U.S. | 2758423      | Bag: 50 lbs. (22.7 kg) |



### Planitop® 200

#### Water-Repellent Skimcoating Mortar for Concrete and Glass/Porcelain Mosaics

Planitop 200 is a water-repellent skimcoating mortar developed with a blend of special binders and admixtures, selected aggregate and powder polymers, formulated to produce high bond strength and easy finishing. Mixed only with water, Planitop 200 is available in gray and white.

|      | Product Code      | Packaging                                                     |
|------|-------------------|---------------------------------------------------------------|
| U.S. | 2225225<br>222425 | Bag: Gray, 55 lbs. (24.9 kg)<br>Bag: White, 55 lbs. (24.9 kg) |





### Planitop® 23

#### Vertical and Overhead, Two-Component Repair Mortar

*Planitop 23* is a two-component, fast-setting, polymer-modified, thixotropic, fiber-reinforced, cementitious mortar with a corrosion inhibitor. *Planitop 23* is intended for vertical and overhead repairs, and contains silica fume to provide a durable, high-strength mortar in these applications.

|      | Product Code | Packaging                            |
|------|--------------|--------------------------------------|
| U.S. | 2758720      | Part A, Bag: 38.58 lbs. (17.5 kg)    |
|      | 2758820      | Part B, Jug: 0.76 U.S. gal. (2.88 L) |

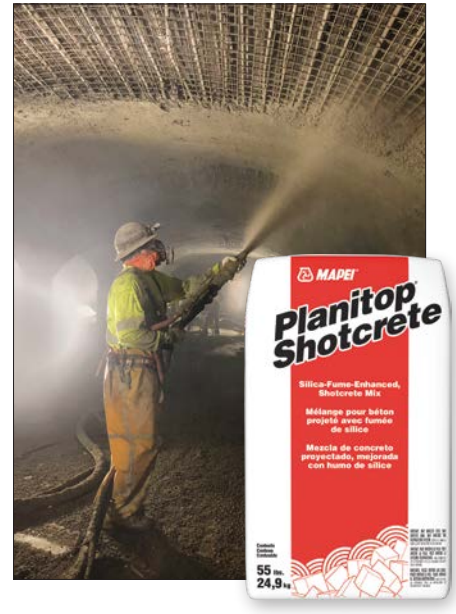


### Planitop® 25

#### Two-Component Resurfacing Mortar

*Planitop 25* is a two-component, shrinkage-compensated, cementitious, flowable resurfacing mortar with a corrosion inhibitor.

|      | Product Code | Packaging                             |
|------|--------------|---------------------------------------|
| U.S. | 2758330      | Part A, Bag: 57.1 lbs. (25.9 kg)      |
|      | 2758504      | Part B, Jug: 1.05 U.S. gals. (3.97 L) |



### Planitop® Shotcrete

#### Silica-Fume-Enhanced Shotcrete Mix

*Planitop Shotcrete* is a silica-fume-enhanced, cementitious mortar designed to be machine-applied on horizontal, vertical and overhead concrete surfaces, using the dry- or wet-mix spray process. *Planitop Shotcrete* is a special blend of hydraulic binders, silica fume and well-graded aggregates.

|      | Product Code | Packaging              |
|------|--------------|------------------------|
| U.S. | 1389625      | Bag: 55 lbs. (24.9 kg) |



**Planigrout® PT**

**Post-Tensioning Grout**

Planigrout PT is a non-shrinking, fluid, cement-based grout used to fill the annular space around post-tensioned strands in PT ducts.



**Planigrout® 712**

**High-Performance, Nonshrink, Nonmetallic Grout**

Planigrout 712 is a one-component, nonshrinking, nonmetallic, cement-based grout. Planigrout 712 contains a corrosion inhibitor and silica fume, as well as a special blend of fine aggregate and plasticizers that provide exceptional placing and performance characteristics.



**Planigrout® 728**

**Nonshrink Precision Grout**

Planigrout 728 is a one-component, nonshrink, nonmetallic, cement-based precision grout that provides high performance.

|      | Product Code | Packaging              |
|------|--------------|------------------------|
| U.S. | 0468723      | Bag: 50 lbs. (22.7 kg) |

|      | Product Code | Packaging              |
|------|--------------|------------------------|
| U.S. | 7492123      | Bag: 50 lbs. (22.7 kg) |

|      | Product Code | Packaging              |
|------|--------------|------------------------|
| U.S. | 0467323      | Bag: 50 lbs. (22.7 kg) |





**Planigrout® 740**

**Nonshrink, Underwater Tremie Grout**

Planigrout 740 is a high-strength, nonshrink, cementitious tremie grout composed of select fine aggregates, special additives and silica fume for use in off-shore grouting and repair.

|      | Product Code | Packaging              |
|------|--------------|------------------------|
| U.S. | 4074025      | Bag: 55 lbs. (24.9 kg) |



**Planigrout® 755**

**Cement-Based, General-Purpose Construction Grout**

Planigrout 755 is a one-component, nonmetallic, nonstaining, nonshrinking, cementitious construction grout consisting of select fine aggregates and special additives. Planigrout 755 requires only the addition of water to produce consistencies varying from dry pack to flowable.

|      | Product Code | Packaging              |
|------|--------------|------------------------|
| U.S. | 7492323      | Bag: 50 lbs. (22.7 kg) |



**Planigrout® 350 [NA]**

**High-Performance, Deep-Pour, Three-Component Epoxy Grout**

Planigrout 350 is a high-performance epoxy grout that can be placed in deep-pour applications and where high compressive and dynamic strengths are required.

|      | Product Code | Packaging                              |
|------|--------------|----------------------------------------|
|      | 0468108      | Part A, Pail: 2.08 U.S. gals. (7.87 L) |
| U.S. | 0468205      | Part B, Pail: 1.35 U.S. gals. (5.11 L) |
|      | 0468329      | Part C, Bag: 64.3 lbs. (29.2 kg)       |



**Planigrout® 310 [NA]**

**High-Performance, Highly Flowable, Three-Component Epoxy Grout**

Planigrout 310 is a high-performance epoxy grout that can be placed in precision applications that require high-flow capabilities as well as high compressive and dynamic strengths

|      | Product Code | Packaging                              |
|------|--------------|----------------------------------------|
|      | 0468436      | Part A, Pail: 2.08 U.S. gals. (7.87 L) |
| U.S. | 0468536      | Part B, Pail: 1.35 U.S. gals. (5.11 L) |
|      | 0468636      | Part C, Bag: 47 lbs. (21.3 kg)         |



**Concrete Renew™**

**High-Performance Concrete Resurfacer**

Concrete Renew is a one-component, polymer-modified, cementitious material for the resurfacing of existing concrete, to provide a like-new look to concrete surfaces.

|      | Product Code | Packaging              |
|------|--------------|------------------------|
| U.S. | 7347011      | Bag: 25 lbs. (11.3 kg) |



**Concrete Renew™ Fine**

**Fine-Grade Concrete Resurfacer**

Concrete Renew Fine is a one-component, polymer-modified, cementitious material formulated with a finer aggregate than Concrete Renew to give a smoother finish when resurfacing existing concrete.

|      | Product Code | Packaging              |
|------|--------------|------------------------|
| U.S. | 7347111      | Bag: 25 lbs. (11.3 kg) |



**Planitop® Basecoat**

**Polymer-Modified, Cementitious Adhesive and Basecoat**

*Planitop Basecoat* is a high-performance, polymer-modified, Portland-cement-based, preblended mortar for nonstructural applications. *Planitop Basecoat* can be used as a basecoat for embedding mesh in EIFS systems or as a leveling coat on cement-based stucco before the application of an acrylic finish or waterproof coating. It can also be used as an adhesive to affix architectural foam shapes as well as EPS and XPS insulation boards. *Planitop Basecoat* is suitable for applications on concrete and masonry substrates, and properly prepared wood assemblies. *Planitop Basecoat* conforms to appropriate sections of ASTM C926, Standard Specification for Application of Portland Cement-Based Plaster.

|      | Product Code | Packaging              |
|------|--------------|------------------------|
| U.S. | 2758123      | Bag: 50 lbs. (22.7 kg) |



**Mapelastic®**

**Flexible, Cementitious Membrane for Waterproofing and Protecting Concrete and Masonry**

*Mapelastic* is a two-component, cementitious membrane that waterproofs concrete and masonry. It also offers protection against chemical attack from de-icing salts, sulfates, chlorides and carbon dioxide.

|      | Product Code       | Packaging                          |
|------|--------------------|------------------------------------|
| U.S. | 6UM502731 (silver) | Part A, Bag: 50 lbs. (22.7 kg)     |
|      | 6UM500031 (white)  | Part A, Bag: 50 lbs. (22.7 kg)     |
|      | 6UM999931          | Part B, Jug: 2 U.S. gals. (7.57 L) |



**Mapelastic® Smart**

**Roller-Grade, Flexible, Cementitious, Intermediate Waterproofing Membrane for Concrete Protection**

*Mapelastic Smart* is a flexible, cementitious membrane for protecting new and repaired concrete structures. *Mapelastic Smart* is designed as an intermediate waterproofing membrane.

|      | Product Code | Packaging                          |
|------|--------------|------------------------------------|
| U.S. | 1676723      | Part A, Bag: 33.3 lbs. (15.1 kg)   |
|      | 1676823      | Part B, Jug: 2 U.S. gals. (7.57 L) |





### Planiseal® CR1

#### Single-Component, 100%-Solids, Cold-Fluid-Applied, Structural Waterproofing Membrane

Planiseal CR1 is a fast-curing, 100%-solids, cold-fluid-applied, single-component, moisture-curing, structural waterproofing membrane that will not shrink and is VOC-compliant in virtually all municipalities. Very low in odor, it is well suited for use in and around occupied spaces. Thanks to advanced proprietary technology, this single-grade membrane can be used in horizontal as well as vertical applications, maximizing versatility. Planiseal CR1 can be applied by roller, brush, trowel or squeegee.

|      | Product Code | Packaging                   |
|------|--------------|-----------------------------|
| U.S. | 2438619      | Pail: 5 U.S. gals. (18.9 L) |



### MAPEI LMR Fabric

#### Reinforcing Fabric for Liquid Waterproofing Membranes

MAPEI LMR Fabric is a spunbond, nonwoven polyester fabric used as a reinforcement for liquid-applied waterproofing membranes. When embedded into a liquid-applied waterproofing membrane, it will add strength and durability to the overall system.

|      | Product Code | Packaging                          |
|------|--------------|------------------------------------|
| U.S. | 1782278      | Roll: 36" x 667 ft. (0.91 x 203 m) |



### Planiseal® 288

#### Flexible, Cementitious Waterproofing Mortar

Planiseal 288 is a slightly flexible, two-component, polymer-modified, cementitious waterproofing and protective mortar for concrete and masonry.

|      | Product Code    | Packaging                         |
|------|-----------------|-----------------------------------|
| U.S. | 0783420 (gray)  | Part A, Bag: 35.5 lbs. (16.1 kg)  |
|      | 0783220 (white) | Part A, Bag: 35.5 lbs. (16.1 kg)  |
|      | 0783320         | Part B, Jug: 1 U.S. gal. (3.79 L) |



### Planiseal® 88

#### Cement-Based, Waterproofing and Surface-Preparation Coating

Planiseal 88 is a one-component, polymer-modified, cementitious coating for waterproofing, including masonry surfaces, at a maximum depth of 10 feet (3.05 m). Planiseal 88 is also used as a surface-preparation product for MAPEI waterproofing products.



### Planiseal® Plug

#### Ultra Quick-Setting Water Stop and Anchoring Mortar

Planiseal Plug is a quick-setting hydraulic cement specially designed for stopping leaks, for repairing voids and pockets in concrete, and for anchoring. It is ideal for plugging active water leaks on horizontal and vertical concrete surfaces.



### Idrostop™

#### Hydrophilic, Expandable, Pre-Formed, Flexible Rubber Strip for Watertight Construction

Idrostop is an expandable pre-formed flexible rubber strip used to produce watertight construction joints in civil, industrial and hydraulic construction.

|      | Product Code    | Packaging              |
|------|-----------------|------------------------|
| U.S. | 0937425 (gray)  | Bag: 55 lbs. (24.9 kg) |
|      | 0937525 (white) | Bag: 55 lbs. (24.9 kg) |

|      | Product Code | Packaging               |
|------|--------------|-------------------------|
| U.S. | 2437005      | Pail: 11 lbs. (4.99 kg) |
|      | 2437025      | Pail: 55 lbs. (24.9 kg) |

|      | Product Code | Packaging                                                                            |
|------|--------------|--------------------------------------------------------------------------------------|
| U.S. | 176260       | Box of Idrostop 5: Six 65-ft. (20-m) rolls, each measuring 3/4" x 3/16" (20 x 5 mm)  |
|      | 176660       | Box of Idrostop 25: Six 16.4-foot (5-m) rolls, each measuring 3/4" x 1" (20 x 25 mm) |



### Mapetex™ Sel

#### Nonwoven Fabric for Reinforcing Waterproofing Membranes

Mapetex Sel is a macro-holed, nonwoven polypropylene, fabric reinforcement used with Mapelastic® and Mapelastic Smart.

|      | Product Code | Packaging                     |
|------|--------------|-------------------------------|
| U.S. | 281625       | Roll: 3.3' x 82' (1 m x 25 m) |

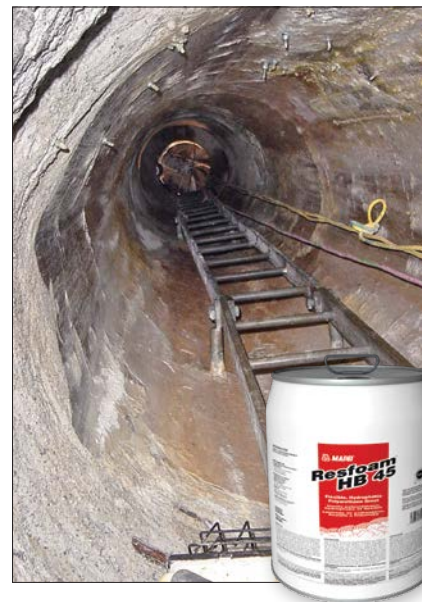


### Mapeband™ TPE

#### Flexible Waterproof Tape for Expansion and Movement Joints

Mapeband TPE is a professional-grade, highly durable and flexible band for sealing and waterproofing expansion joints and cracks subject to movement. Available in two sizes, it can accommodate movement up to 7/32" (5.5 mm) as Mapeband TPE 170 and up to 13/32" (10.5 mm) as Mapeband TPE 325.

|      | Product Code | Packaging                          |
|------|--------------|------------------------------------|
| U.S. | 795130       | Roll: 6.7" x 98' (17 cm x 30 m)    |
|      | 795230       | Roll: 12.8" x 98' (32.5 cm x 30 m) |



### Resfoam® HB 45

#### Flexible, Hydrophobic Polyurethane Grout

Resfoam HB 45 is a low-viscosity, flexible, hydrophobic polyurethane grout used to stop water infiltration in concrete structures. Resfoam HB 45 is a solvent-free, MDI-based polymer system that reacts with water. Use Resfoam HBA 45 together with Resfoam HBA 45 accelerator to adjust the reaction profile for a specific application.

|      | Product Code | Packaging                   |
|------|--------------|-----------------------------|
| U.S. | 02668        | Pail: 5 U.S. gals. (18.9 L) |

#### Resfoam HBA 45

|      | Product Code | Packaging                |
|------|--------------|--------------------------|
| U.S. | 2445958      | Can: 1 U.S. qt. (946 mL) |



**Resfoam® HL 35**

**Flexible, Hydrophilic Polyurethane Foam and Gel Resin**

*Resfoam HL 35* is a single-component, water-activated hydrophilic polyurethane used for sealing cracks or joints in concrete structures that are subject to continuous moisture exposure.

|      | Product Code | Packaging                   |
|------|--------------|-----------------------------|
| U.S. | 2445619      | Pail: 5 U.S. gals. (18.9 L) |



**Resfoam® SS 75**

**Rigid, Hydrophobic Polyurethane Grout for Soil Stabilization**

*Resfoam SS 75* is a low-viscosity, hydrophobic polyurethane grout used for soil stabilization in a variety of water-bearing soils. The low viscosity of *Resfoam SS 75* provides for effective penetration of the earth, adding structure and stabilization by encapsulating the granules and subsequently forming a rock-like mass. By application, *Resfoam SS 75* cures rapidly to a rigid closed cell, effectively stopping water seepage and waterproofing the soil. *Resfoam SS 75* utilizes *Resfoam HBA 75* catalyst, which provides a variable reaction time.

|      | Product Code     | Packaging                                                  |
|------|------------------|------------------------------------------------------------|
| U.S. | 02068<br>2445176 | Pail: 5 U.S. gals. (18.9 L)<br>Drum: 55 U.S. gals. (208 L) |

**Resfoam HBA 75**

|      | Product Code | Packaging                |
|------|--------------|--------------------------|
| U.S. | 2445858      | Can: 1 U.S. qt. (946 mL) |



**Resfoam® PF**

**100%-Organic Pump Flush Agent**

*Resfoam PF* is a 100%-organic blend of select, high-temperature oils. *Resfoam PF* provides an environmentally friendly and effective alternative to hazardous products as a flush and cleaning agent for removing polyurethane and other tough composites from grout-injection equipment and injection lines.

|      | Product Code | Packaging                   |
|------|--------------|-----------------------------|
| U.S. | 03368        | Pail: 5 U.S. gals. (18.9 L) |



**Planibond® EBA**

**High-Modulus, Epoxy Bonding Agent**

*Planibond EBA* is a two-component, multipurpose, high-modulus, epoxy bonding agent. *Planibond EBA* is nonshrink, 100%-solids and moisture-tolerant. *Planibond EBA* is used primarily as a bonding agent for screeds and repair mortars.

|      | Product Code | Packaging                           |
|------|--------------|-------------------------------------|
| U.S. | 1962208KIT   | Kit: 2 U.S. gals. (7.57 L)          |
|      | 1962238      | Part A, Pail: 5 U.S. gals. (18.9 L) |
|      | 1962338      | Part B, Pail: 5 U.S. gals. (18.9 L) |



**Planibond® SBA**

**Normal-Set, Segmental Bridge Adhesives**

*Planibond SBA* epoxy bonding adhesives are two-component, 100%-solids and moisture-insensitive. Each *Planibond SBA* adhesive acts as a lubricant and sealer for match-cast precast segments used in span by span and cantilevered erection of segmented precast elements.

|      | Product Code | Packaging                                                 |
|------|--------------|-----------------------------------------------------------|
| U.S. | 1966511      | <i>Planibond SBA 20-45</i> : Pail, 3 U.S. gals. (11.4 L)  |
|      | 1963511      | <i>Planibond SBA 40-65</i> : Pail, 3 U.S. gals. (11.4 L)  |
|      | 1963811      | <i>Planibond SBA 60-90</i> : Pail, 3 U.S. gals. (11.4 L)  |
|      | 1963911      | <i>Planibond SBA 75-115</i> : Pail, 3 U.S. gals. (11.4 L) |



**Planibond® SBA SlowSet**

**Slow-Setting, Segmental Bridge Adhesives**

*Planibond SBA SlowSet* epoxy bonding adhesives are two-component, 100%-solids and moisture-insensitive. Each *Planibond SBA SlowSet* adhesive acts as a lubricant and sealer for match-cast precast segments used in span by span and cantilevered erection of segmented precast elements.

|      | Product Code | Packaging                                                        |
|------|--------------|------------------------------------------------------------------|
| U.S. | 1965411      | <i>Planibond SBA SlowSet 40-65</i> : Kit: 3 U.S. gals. (11.4 L)  |
|      | 1965611      | <i>Planibond SBA SlowSet 60-85</i> : Kit: 3 U.S. gals. (11.4 L)  |
|      | 1962411      | <i>Planibond SBA SlowSet 80-105</i> : Kit: 3 U.S. gals. (11.4 L) |



**Planibond® AE**

**High-Strength, Nonsag, Epoxy Anchoring Gel**

Planibond AE is a high-strength, moisture-tolerant, zero-VOC, two-part, nonsag, epoxy anchoring gel designed for a wide variety of bonding and repair applications.



**Planibond® AE Fast**

**Rapid-Setting, High-Strength, Epoxy Anchoring Gel**

Planibond AE Fast is a rapid-setting, high-strength, moisture-tolerant, two-component, 100%-solids, epoxy anchoring gel designed for a wide variety of vertical/horizontal bonding and repair applications.



**Epojet™ [NA]**

**High-Modulus, Low-Viscosity, Epoxy Injection Resin for Crack Repair**

Epojet is a high-strength, two-component, 100%-solids, low-viscosity, epoxy resin for pressure injection and sealing of cracks in structural concrete, masonry and wood.

|      | Product Code | Packaging                              |
|------|--------------|----------------------------------------|
| U.S. | 1961540      | Dual cartridge: 20.3 U.S. oz. (600 mL) |
|      | 1961508KIT   | Kit: 2 U.S. gals. (7.57 L)             |
|      | 1961519      | Part A, Pail: 5 U.S. gals. (18.9 L)    |
|      | 1961619      | Part B, Pail: 5 U.S. gals. (18.9 L)    |
|      | 1961578      | Part A, Drum: 55 U.S. gals. (208 L)    |
|      | 1961678      | Part B, Drum: 55 U.S. gals. (208 L)    |

|      | Product Code | Packaging                              |
|------|--------------|----------------------------------------|
| U.S. | 1962840      | Dual cartridge: 20.3 U.S. oz. (600 mL) |
|      | 1962908KIT   | Kit: 2 U.S. gals. (7.57 L)             |

|      | Product Code | Packaging                              |
|------|--------------|----------------------------------------|
| U.S. | 1561144      | Dual cartridge: 13.5 U.S. oz. (399 mL) |
|      | 1561111KIT   | Kit: 3 U.S. gals. (11.4 L)             |



### Epojet™ LV [NA]

#### Very Low-Viscosity, Epoxy Injection Resin for Crack Repair

*Epojet LV* is a moisture-tolerant, two-component, 100%-solids, very low-viscosity, epoxy injection resin that deeply penetrates as well as seals dry and damp hairline, non-dynamic cracks. *Epojet LV* may be applied by pressure injection or gravity feed, and can also be combined with sand to become an epoxy mortar.

|      | Product Code | Packaging                              |
|------|--------------|----------------------------------------|
| U.S. | 1575144      | Dual cartridge: 13.5 U.S. oz. (399 mL) |
|      | 1575111KIT   | Kit: 3 U.S. gals. (11.4 L)             |



### Epojet™ SLV [NA]

#### Super Low-Viscosity, Epoxy Injection Resin for Crack Repair

*Epojet SLV* is a moisture-tolerant, two-component, 100%-solids, super low-viscosity, epoxy injection resin that penetrates deeply and seals dry and damp hairline, non-dynamic cracks.

|      | Product Code | Packaging                            |
|------|--------------|--------------------------------------|
| U.S. | 1561405      | Kit, Pail: 1.25 U.S. gals. (4.73 L)  |
|      | 1561419      | Part A, Pail: 4 U.S. gals. (15.14 L) |
|      | 1561319      | Part B, Pail: 1 U.S. gal. (3.79 L)   |



### Planibond® Hi-Mod Gel

#### High-Modulus, Nonsag, Structural Epoxy Adhesive

*Planibond Hi-Mod Gel* is a high-modulus, high-strength, moisture-tolerant, zero-VOC, two-part, nonsag, structural epoxy adhesive designed for a wide variety of bonding and repair applications.

|      | Product Code | Packaging                             |
|------|--------------|---------------------------------------|
| U.S. | 1965104      | Part A, Pail: 0.5 U.S. gal. (1.89 L)  |
|      | 1965204      | Part B, Pail: 0.5 U.S. gal. (1.89 L)  |
|      | 1965112      | Part A, Pail: 1.5 U.S. gals. (5.68 L) |
|      | 1965212      | Part B, Pail: 1.5 U.S. gals. (5.68 L) |



### Planibond® Hi-Mod Gel LPL

#### Long-Pot-Life, High-Modulus, Nonsag, Structural Epoxy Adhesive

*Planibond Hi-Mod Gel LPL* is a high-modulus, high-strength, moisture-tolerant, zero-VOC, two-part, nonsag, structural epoxy adhesive designed for a wide variety of bonding and repair applications, while providing a long pot life and open time.

|      | Product Code | Packaging                   |
|------|--------------|-----------------------------|
| U.S. | 1966115      | Pail, 3 U.S. gals. (11.4 L) |



### Planicrete® AC

#### Acrylic Latex Admixture for Mortar and Stucco

*Planicrete AC* is a one-component, concentrated, liquid latex admixture used to enhance the performance of cementitious repair mortars, plasters, stuccos and toppings.

|      | Product Code | Packaging                   |
|------|--------------|-----------------------------|
| U.S. | 0378204      | Jug: 1 U.S. gal. (3.79 L)   |
|      | 0378219      | Pail: 5 U.S. gals. (18.9 L) |
|      | 0378278      | Drum: 55 U.S. gals. (208 L) |



### Planicrete® UA

#### Universal Latex Additive

*Planicrete UA* is a next-generation, water-based, one-component, concentrated liquid latex admixture used to enhance the performance of several MAPEI products, including mortar mixes. Using *Planicrete UA* as part of the designated design mixes will increase product performance in the areas of bond, flexural and tensile strengths in addition to increased durability and enhanced workability.

|      | Product Code | Packaging                   |
|------|--------------|-----------------------------|
| U.S. | 36253        | Jug: 1 U.S. gal. (3.79 L)   |
|      | 36268        | Pail: 5 U.S. gals. (18.9 L) |





### Planitop® Accelerator

#### Accelerating Admixture for Cement-Based Mortars

*Planitop Accelerator* is a non-chloride, liquid, hardening accelerator that acts as a catalyst to decrease set time and increase the early strength of cementitious mortars at temperatures that are colder than normal.

|      | Product Code | Packaging                      |
|------|--------------|--------------------------------|
| U.S. | 2759051      | Bottle: 5.07 U.S. oz. (150 mL) |



### Mapecure™ SRA

#### Shrinkage-Reduction Admixture

*Mapecure SRA* is a ready-to-use, liquid admixture that aids in reducing drying shrinkage, resulting in a reduction in the formation of microcracks.

|      | Product Code | Packaging                   |
|------|--------------|-----------------------------|
| U.S. | 1696219      | Pail: 5 U.S. gals. (18.9 L) |



### Mapefer™ 1K [NA]

#### Corrosion-Inhibiting Coating for Reinforcing Steel

*Mapefer 1K* is a one-component, anti-corrosion coating based on unique polymers, cementitious binders and corrosion inhibitors. *Mapefer 1K* is specially formulated for application on properly prepared reinforcing steel to inhibit oxidation and rust formation. This product features a very low emission of volatile organic compounds and includes an offset of greenhouse gas emissions.

|      | Product Code | Packaging              |
|------|--------------|------------------------|
| U.S. | 2766105      | Bag: 10 lbs. (4.54 kg) |





**Planibond® 3C**

**Three-Component, Cementitious Corrosion Inhibitor and Bonding Agent**

Planibond 3C is a three-component, cementitious, moisture-tolerant, water-based, epoxy-modified corrosion inhibitor and bonding agent.



**Mapeshield™ I**

**Pure Zinc Galvanic Anode**

Mapeshield I is a pure zinc anode for cathodic protection of reinforcing steel against corrosion in new, reinforced structures as well as structures requiring repair.



**Mapeshield™ CI 100**

**Surface-Applied Corrosion Inhibitor**

Mapeshield CI 100 is a surface-applied corrosion inhibitor designed to penetrate concrete structures and protect embedded steel reinforcement. Mapeshield CI 100 delays the corrosion process and reduces overall corrosion activity.

|      | Product Code | Packaging                                      |
|------|--------------|------------------------------------------------|
| U.S. | 1964005KIT   | Large kit (Parts A and B): 10.8 lbs. (4.90 kg) |
|      | 1964220      | Part C: 4.4 lbs. (20.0 kg)                     |
|      | 1964005KIT   | Small kit: 1.74 U.S. gals. (6.59 L)            |

|      | Product Code | Packaging                         |
|------|--------------|-----------------------------------|
| U.S. | 2099024      | Mapeshield I 10/10, 24 per carton |
|      | 2099124      | Mapeshield I 10/20, 24 per carton |
|      | 2099212      | Mapeshield I 30/10, 12 per carton |
|      | 2099312      | Mapeshield I 30/20, 12 per carton |
|      | 2099650      | Mapeshield I 70, 50 per carton    |
|      | 2099550      | Mapeshield I 105, 50 per carton   |

|      | Product Code | Packaging                   |
|------|--------------|-----------------------------|
| U.S. | 2098119      | Pail: 5 U.S. gals. (18.9 L) |
|      | 2098178      | Drum: 55 U.S. gals. (208 L) |





### Mapeshield™ CI 110

#### Surface-Applied Corrosion Inhibitor with Integrated Water Repellent

Mapeshield CI 110 is a surface-applied corrosion inhibitor, with an integrated moisture repellent, designed to penetrate concrete and protect embedded steel reinforcement. Mapeshield CI 110 delays the corrosion process, reduces overall corrosion activity and creates a water-repelling barrier on the surface of the concrete.

|      | Product Code       | Packaging                                                  |
|------|--------------------|------------------------------------------------------------|
| U.S. | 2098419<br>2098478 | Pail: 5 U.S. gals. (18.9 L)<br>Drum: 55 U.S. gals. (208 L) |



### Elastocolor® Primer WB

#### Water-Based, 100%-Acrylic Primer for Elastocolor Coatings

Elastocolor Primer WB is a clear, water-based, 100%-acrylic primer for use with Elastocolor coatings. Elastocolor Primer WB improves adhesion on porous, dusting and new substrates.

|      | Product Code | Packaging                   |
|------|--------------|-----------------------------|
| U.S. | 2559019      | Pail: 5 U.S. gals. (18.9 L) |



### Elastocolor® Primer AR

#### Water-Based, Alkali-Resistant Primer for Elastocolor Coatings

Elastocolor Primer AR is a specially designed primer for use on exterior, above-grade, new and previously coated concrete and masonry surfaces. Elastocolor Primer AR will protect subsequent coatings from the damaging effects of high pH present in freshly placed cement-based products. It remains highly flexible, offers excellent filling and adhesion on prepared substrates, and is designed for compatibility with MAPEI's Elastocolor coating systems.

|      | Product Code | Packaging                                |
|------|--------------|------------------------------------------|
| U.S. | 7UH094019    | Pail: Pastel base, 5 U.S. gals. (18.9 L) |



**Elastocolor® Paint**

**Water-Based, 100%-Acrylic, High-Quality Coating**

*Elastocolor Paint* is a high-quality, water-based, 100%-acrylic coating that forms a protective film for use on above-grade, exterior/interior concrete, masonry, stucco, fiber-reinforced polymer (FRP) composites and EIFS systems. *Elastocolor Paint* is available in a wide range of standard colors and in an unlimited number of custom colors to increase its design versatility.

|      | Product Code | Packaging                               |
|------|--------------|-----------------------------------------|
| U.S. | 7UA091019    | Medium base, 5 U.S. gals. (18.9 L)      |
|      | 7UA090019    | Pastel base, 5 U.S. gals. (18.9 L)      |
|      | 7UA092019    | Transparent base, 5 U.S. gals. (18.9 L) |



**Elastocolor® Flex**

**Water-Based, 100%-Acrylic, Elastomeric Waterproof Coating**

*Elastocolor Flex* is an elastomeric, high-build, water-based, 100%-acrylic coating to protect and decorate above-grade, vertical exterior concrete, masonry, stucco and EIFS systems. *Elastocolor Flex* is available in two textures (smooth and fine), in a wide range of standard colors and in an unlimited number of custom colors to increase its design versatility.

|           | Product Code                                  | Packaging                                     |
|-----------|-----------------------------------------------|-----------------------------------------------|
| U.S.      | Smooth texture                                |                                               |
|           | 7UC090019                                     | Pail: Pastel base, 5 U.S. gals. (18.9 L)      |
|           | 7UC091019                                     | Pail: Medium base, 5 U.S. gals. (18.9 L)      |
|           | 7UC092019                                     | Pail: Transparent base, 5 U.S. gals. (18.9 L) |
|           | Fine texture                                  |                                               |
|           | 7UB090019                                     | Pail: Pastel base, 5 U.S. gals. (18.9 L)      |
|           | 7UB091019                                     | Pail: Medium base, 5 U.S. gals. (18.9 L)      |
| 7UB092019 | Pail: Transparent base, 5 U.S. gals. (18.9 L) |                                               |



**Elastocolor® Coat DOT-MOT**

**Water-Based, High-Build, 100%-Acrylic Coating**

*Elastocolor Coat DOT-MOT* is specially formulated to meet the surface coating needs of the bridge and highway construction market, for coating new and previously painted concrete structures. It exhibits superior application qualities and long-term performance on exposure to the environment.

|      | Product Code | Packaging                                |
|------|--------------|------------------------------------------|
| U.S. | 7UF091019    | Medium base, pail: 5 U.S. gals. (18.9 L) |
|      | 7UF091078    | Medium base, drum: 55 U.S. gals. (208 L) |
|      | 7UF090019    | Pastel base, pail: 5 U.S. gals. (18.9 L) |
|      | 7UF090078    | Pastel base, drum: 55 U.S. gals. (208 L) |



### Elastocolor® Coat

#### Water-Based, High-Build, 100%-Acrylic, Waterproof Coating

*Elastocolor Coat* is a water-based, high-build, 100%-acrylic coating designed to protect and decorate above-grade, exterior/interior vertical concrete, masonry, stucco, fiber-reinforced polymer (FRP) composites and EIFS systems. *Elastocolor Coat* is available in two textures (smooth and fine), in a wide range of standard colors and in an unlimited number of custom colors to increase its design versatility.



### Elastocolor® Texture

#### Water-Based, High-Build, Acrylic, Textured Coating

*Elastocolor Texture* is a specially designed coating for use on exterior, above-grade, new and previously coated concrete and masonry surfaces. *Elastocolor Texture's* unique blend of aggregates produces an attractive, high-build, textured finish. It is ideal for use on restoration projects to reduce the appearance of surface imperfections and repairs or wherever a uniform textured finish is desired. *Elastocolor Texture* remains highly flexible and offers excellent filling properties and adhesion to prepared substrates.



### Mapecoat™ Deck T

#### High-Build, Textured, Acrylic Deck Coating

*Mapecoat Deck T* is a water-based, slip-resistant coating specially designed for use on new and previously coated concrete. *Mapecoat Deck T* creates an attractive, durable wear surface for residential and commercial indoor/outdoor decks, balconies and walkways. It offers enhanced durability to withstand pedestrian and light vehicular traffic with the convenience and easy application of a single-component product.

|      | Product Code                | Packaging                                     |
|------|-----------------------------|-----------------------------------------------|
| U.S. | Smooth texture<br>7UE090019 | Pail: Pastel base, 5 U.S. gals. (18.9 L)      |
|      | 7UE091019                   | Pail: Medium base, 5 U.S. gals. (18.9 L)      |
|      | 7UE092019                   | Pail: Transparent base, 5 U.S. gals. (18.9 L) |
|      | Fine texture<br>7UD090019   | Pail: Pastel base, 5 U.S. gals. (18.9 L)      |
|      | 7UD091019                   | Pail: Medium base, 5 U.S. gals. (18.9 L)      |
|      | 7UD092019                   | Pail: Transparent base, 5 U.S. gals. (18.9 L) |

|      | Product Code | Packaging                                |
|------|--------------|------------------------------------------|
| U.S. | 7UG091019    | Pail: Medium base, 5 U.S. gals. (18.9 L) |
|      | 7UG090019    | Pail: Pastel base, 5 U.S. gals. (18.9 L) |

|      | Product Code | Packaging                                |
|------|--------------|------------------------------------------|
| U.S. | 3UD091019    | Pail: Medium base, 5 U.S. gals. (18.9 L) |
|      | 3UD090019    | Pail: Pastel base, 5 U.S. gals. (18.9 L) |



**Mapecoat™ Deck S**

**Acrylic Urethane Coating**

Mapecoat Deck S is a water-based, urethane-modified, acrylic coating specially designed for use on new and previously coated concrete and other properly prepared substrates. Mapecoat Deck S has an attractive, low-sheen finish that creates a durable wear surface for residential and commercial indoor/outdoor floors, decks, balconies and walkways. An optional high-gloss clear coat can be used to provide additional protection and dimension for creative effects or broadcast elements. Mapecoat Deck S offers enhanced adhesion and durability to withstand pedestrian and light vehicular traffic with the convenience and ease of application of a single-component product.

|      | Product Code | Packaging                                 |
|------|--------------|-------------------------------------------|
| U.S. | 3UC502313    | Pail: Clear base, 3.5 U.S. gals. (13.2 L) |
|      | 3UC091019    | Pail: Medium base, 5 U.S. gals. (18.9 L)  |
|      | 3UC090019    | Pail: Pastel base, 5 U.S. gals. (18.9 L)  |



**Mapefloor™ Filler**

**Microcrystalline, Anti-Slip Additive**

Mapecoat Filler is a dry powder additive that is easily dispersed into select resinous flooring products and coatings to improve slip resistance of the resulting finish.

|      | Product Code | Packaging                |
|------|--------------|--------------------------|
| U.S. | 245653       | Pail: 0.66 lb. (0.30 kg) |



**Mapefloor™ Finish 58 W**

**Two-Component, Clear, Matte, Aliphatic Polyurethane Coating**

Mapefloor Finish 58 W is a two-component, aliphatic polyurethane coating in water dispersion with a matte finish that is clear or colored. Mapefloor Finish 58 W provides a high-performance finish on general-service resinous flooring products and Ultratop® systems.

|      | Product Code | Packaging                                    |
|------|--------------|----------------------------------------------|
| U.S. | 6UD092009    | Clear base, Part A, Pail: 17.63 lbs. (8 kg)  |
|      | 6UD999909    | Hardener, Part B, Bottle: 1.77 lbs. (0.8 kg) |



**Mapefloor™ Finish 59 W**

**Two-Component, Water-Based, Clear, Matte, Aliphatic Polyurethane Coating**

Mapefloor Finish 59 W is a two-component, water-based, aliphatic polyurethane coating with a matte finish that is clear or colored. Mapefloor Finish 59 W provides a high-performance finish on general-service resinous flooring products and Ultratop systems.

|      | Product Code | Packaging                     |
|------|--------------|-------------------------------|
| U.S. | 2563506      | Kit: 1.39 U.S. gals. (5.26 L) |



**Mapefloor™ Finish 630**

**Two-Component, Clear Protective Acrylic Coating for Floors**

Mapefloor Finish 630 is a two-component, protective, acrylic filming agent in a water dispersion for floors made from concrete and Ultratop® systems. Mapefloor Finish 630 provides a high-performance finish on Ultratop systems.

|      | Product Code | Packaging                     |
|------|--------------|-------------------------------|
| U.S. | 2564311      | Kit, 2.63 U.S. gals. (9.95 L) |



**Primer SN™ [NA]**

**Two-Component, Filled, Epoxy Primer**

Primer SN is a two-component, filled, epoxy primer specifically designed to enhance adhesion of cement-based decorative and multilayer flooring, such as MAPEI's Mapefloor™ products, Ultratop® products, PlaniLevel™ products and Planitop® EL.

|      | Product Code | Packaging                              |
|------|--------------|----------------------------------------|
| U.S. | 0214311      | Part A, Pail: 2.17 U.S. gals. (8.21 L) |
|      | 0214411      | Part B, Jug: 0.83 U.S. gals. (3.14 L)  |



**Primer SN™ Fast**

**Fast-Setting, Two-Component, Fillerized, Epoxy Primer**

Primer SN Fast is a fast-setting, two-component, fillerized epoxy primer specifically designed to enhance adhesion of multi-layer flooring systems, such as MAPEI's Mapefloor™ polyurethane and epoxy systems as well as urethane cement screeds.

|      | Product Code | Packaging                              |
|------|--------------|----------------------------------------|
| U.S. | 0214711      | Part A, Pail: 2.17 U.S. gals. (8.21 L) |
|      | 0214811      | Part B, Can: 0.83 U.S. gal. (3.14 L)   |



**Mapefloor™ PU Primer**

**Two-Component Polyurethane Primer**

Mapefloor PU Primer is a two-component, polyurethane-based primer that can be used for initial application of Mapefloor parking deck systems or as a recoat primer for already installed polyurethane deck systems.

|      | Product Code | Packaging                              |
|------|--------------|----------------------------------------|
| U.S. | 2582614      | Part A, Pail: 1.79 U.S. gals. (6.78 L) |
|      | 2582714      | Part B, Pail: 1.82 U.S. gals. (6.89 L) |



**Mapefloor™ PU 400 FC**

**Two-Component, Fast-Curing Polyurethane Basecoat for Mapefloor Parking Deck System**

Mapefloor PU 400 FC is a two-component, fast-curing, polyurethane basecoat specifically designed for use as a waterproofing membrane for elevated concrete surfaces where the Mapefloor parking deck system is utilized. With its high elongation and crack-bridging properties, Mapefloor PU 400 FC is suited as a basecoat layer on concrete substrates subject to vibration.

|      | Product Code | Packaging                              |
|------|--------------|----------------------------------------|
| U.S. | 6QM1529420   | Part A, Pail: 1.08 U.S. gals. (4.09 L) |
|      | 2590320      | Part B, Pail: 3.9 U.S. gals. (14.8 L)  |





### Mapefloor™ Finish 415 NA

#### Two-Component, Polyurethane Topcoat for Mapefloor Parking Deck System

Mapefloor Finish 415 NA is a two-component, solvent-free, aromatic polyurethane topcoat specifically designed to provide a protective wear coat for elevated concrete surfaces where the Mapefloor parking deck system is utilized.



### Mapefloor™ Finish 450

#### Two-Component, Aliphatic Polyurethane Topcoat

Mapefloor Finish 450 is a two-component, solvent-free, aliphatic polyurethane topcoat specifically designed to provide a protective wear coat for elevated concrete surfaces in areas that are exposed to direct sunlight.



### Planiseal® Traffic Coat

#### Epoxy Overlay for Vehicular and Pedestrian Traffic

Planiseal Traffic Coat is a moisture-tolerant, 100%-solids, low-modulus, two-part, epoxy binder engineered for providing a skid-resistant overlay on elevated concrete decks.

| Product Code | Packaging                              |
|--------------|----------------------------------------|
|              | Part A, Pail: 3.75 U.S. gals. (14.2 L) |
| 6UB530119    | Light Gray                             |
| 6UB1536919   | Red                                    |
| 6UB530619    | Tan                                    |
| 6UB530519    | Black                                  |
| 6UB530419    | Charcoal                               |
| 6UB530319    | Concrete Gray                          |
| 6UB530919    | Dark Maple                             |
| 6UB530819    | Green                                  |
| 6UB530219    | Medium Gray                            |
| 6UB999919    | Part B, Jug: 1.25 U.S. gals. (4.73 L)  |

U.S.

| Product Code | Packaging                                                            |
|--------------|----------------------------------------------------------------------|
|              | Kit: 5 U.S. gals. (18.9 L)<br>Part A, Pail: 3.52 U.S. gals. (13.3 L) |
| 6UA530119    | #001 Light Gray                                                      |
| 6UA530219    | #002 Medium Gray                                                     |
| 6UA530319    | #003 Concrete Gray                                                   |
| 6UA530419    | #004 Charcoal                                                        |
| 6UA530519    | #005 Black                                                           |
| 6UA530619    | #006 Tan                                                             |
| 6UA531019    | #007 Red                                                             |
| 6UA530819    | #008 Green                                                           |
| 6UA530919    | #009 Dark Maple                                                      |
| 6UA999919    | Part B, Jug: 1.4 U.S. gals. (5.30 L)                                 |

U.S.

| Product Code | Packaging                              |
|--------------|----------------------------------------|
| 2436619      | Part A, Pail: 5 U.S. gals. (18.9 L)    |
| (clear)      |                                        |
| 2436719      | Part B, Pail: 5 U.S. gals. (18.9 L)    |
| 2436678      | Part A, Drum: 55 U.S. gals. (208 L)    |
| 2436778      | Part B, Drum: 55 U.S. gals. (208 L)    |
| 2436685      | Part A, Tote: 275 U.S. gals. (1,041 L) |
| 2436785      | Part B, Tote: 275 U.S. gals. (1,041 L) |

U.S.



**Planiseal® Traffic Coat FS**

**Fast-Setting, Epoxy Overlay for Vehicular and Pedestrian Traffic**

Planiseal Traffic Coat FS is a fast-setting, moisture-resistant, 100%-solids, low-modulus, two-part, epoxy binder engineered for providing a skid-resistant overlay on elevated concrete slabs.

|      | Product Code | Packaging                              |
|------|--------------|----------------------------------------|
| U.S. | 2437519      | Part A, Pail: 5 U.S. gals. (18.9 L)    |
|      | 2437419      | Part B, Pail: 5 U.S. gals. (18.9 L)    |
|      | 2437578      | Part A, Drum: 55 U.S. gals. (208 L)    |
|      | 2437478      | Part B, Drum: 55 U.S. gals. (208 L)    |
|      | 2437585      | Part A, Tote: 275 U.S. gals. (1 041 L) |
|      | 2437485      | Part B, Tote: 275 U.S. gals. (1 041 L) |



**Planiseal® SLV Hi-Mod**

**Super Low-Viscosity, High-Modulus, Epoxy Healer/Sealer**

Planiseal SLV Hi-Mod is a solvent-free, two-component, 100%-solids, super low-viscosity, epoxy healer/sealer designed to penetrate into new or worn cracked concrete surfaces. Planiseal SLV Hi-Mod seals hairline cracks against further moisture penetration and chloride intrusion.

|      | Product Code | Packaging                           |
|------|--------------|-------------------------------------|
| U.S. | 156305       | Kit: 1.25 U.S. gals. (4.73 L)       |
|      | 156319       | Pail, Part A: 4 U.S. gals. (15.1 L) |
|      | 156919       | Pail, Part B: 1 U.S. gal. (3.79 L)  |



**Planiseal® LVB**

**Low-Viscosity, Epoxy Healer/Sealer for Elevated Concrete Decks**

Planiseal LVB is a two-component, very low-viscosity, epoxy healer/sealer designed to penetrate into new or worn cracked concrete surfaces. Planiseal LVB seals hairline cracks against further moisture penetration and chloride intrusion.

|      | Product Code | Packaging                           |
|------|--------------|-------------------------------------|
| U.S. | 2437819      | Part A, Pail: 5 U.S. gals. (18.9 L) |
|      | 2437919      | Part B, Pail: 5 U.S. gals. (18.9 L) |
|      | 2437876      | Part A, Drum: 55 U.S. gals. (208 L) |
|      | 2437976      | Part B, Drum: 55 U.S. gals. (208 L) |



### Planiseal® WR

#### Penetrating, Water-Based, Silane/Siloxane Water Repellent

Planiseal WR is a silane/siloxane-blend, water-repellent, transparent sealer that provides resistance to water, dirt and chlorides.

|      | Product Code | Packaging                   |
|------|--------------|-----------------------------|
| U.S. | 0776619      | Pail: 5 U.S. gals. (18.9 L) |



### Planiseal® WR 40

#### Water-Based, 40%-Silane, Penetrating Water Repellent

Planiseal WR 40 is a water-based, 40%-silane, penetrating water repellent and sealer designed to protect concrete and masonry against moisture/chloride intrusion.

|      | Product Code       | Packaging                                                  |
|------|--------------------|------------------------------------------------------------|
| U.S. | 0777719<br>0777778 | Pail: 5 U.S. gals. (18.9 L)<br>Drum: 55 U.S. gals. (208 L) |



### Planiseal® WR 100

#### Clear, 100%-Silane, Penetrating Water Repellent

Planiseal WR 100 is a clear, high-performance, 100%-silane, penetrating water repellent and sealer designed to provide outstanding water repellency on concrete and masonry. It penetrates deeply, protecting new and existing substrates against moisture/chloride intrusion.

|      | Product Code       | Packaging                                                  |
|------|--------------------|------------------------------------------------------------|
| U.S. | 0776819<br>0776878 | Pail: 5 U.S. gals. (18.9 L)<br>Drum: 55 U.S. gals. (208 L) |



### Mapecrete™ Protector FF

#### High-Gloss, Film-Forming, Protective Coating for Concrete

*Mapecrete Protector FF* is a film-forming, high-gloss protective coating designed to increase the stain resistance of interior, polished or hard-troweled concrete floors.

|      | Product Code | Packaging                   |
|------|--------------|-----------------------------|
| U.S. | 1797619      | Pail: 5 U.S. gals. (18.9 L) |



### Mapeflex® EMC-1

#### Smooth, Brush-Grade, Elastomeric Patching Compound

*Mapeflex EMC-1* is a white, premium-grade, water-based, elastomeric patching material that can be easily used for brush application to fill and seal cracks and/or static joints in masonry and stucco surfaces. *Mapeflex EMC-1* is highly flexible, offers excellent filling and adhesion on prepared substrates, and is designed for compatibility with MAPEI's *Elastocolor®* coating systems.

|      | Product Code | Packaging                    |
|------|--------------|------------------------------|
| U.S. | 7604007      | Pail: 1.8 U.S. gals. (6.8 L) |



### Mapeflex® P1 FT

#### One-Component, Nonsag, Elastomeric Polyurethane Sealant

*Mapeflex P1 FT* is a high-performance, one-component, fast-track, elastomeric, moisture-cured, polyurethane sealant and adhesive. *Mapeflex P1 FT* offers excellent adhesion to most surfaces, superior gunning and tooling, and excellent flexibility for moving joints.

|      | Product Code | Packaging                                       |
|------|--------------|-------------------------------------------------|
|      | 2UA1516253   | Cartridge: Limestone, 10.1 U.S. oz. (300 mL)    |
| U.S. | 2UA1516256   | Sausage pack: Limestone, 20.2 U.S. oz. (600 mL) |



### Mapeflex® Joint Filler EP 90/50

#### Two-Component, Semi-Rigid, 100%-Epoxy Joint Filler

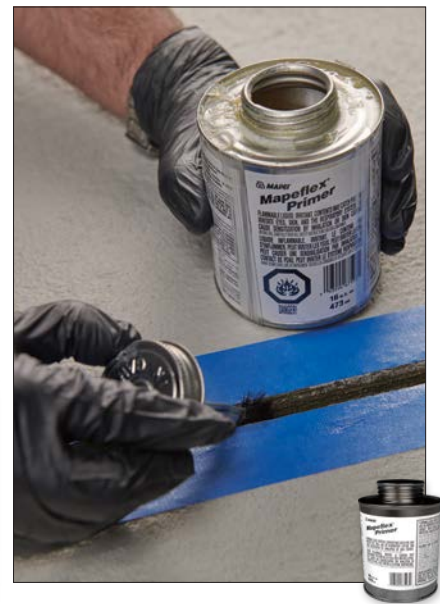
Mapeflex Joint Filler EP 90/50 is a two-component, semi-rigid, 100%-epoxy joint filler used to fill and protect interior control and construction joints from rolling loads.



### Mapeflex® Joint Filler PO 95/100

#### Two-Component, Semi-Rigid, Polyurea Joint Filler

Mapeflex Joint Filler PO 95/100 is a two-component, semi-rigid, polyurea joint filler used to fill and protect interior control and construction joints from rolling loads. Mapeflex Joint Filler PO 95/100 is a quick-setting product for rapid turnaround of the application area back to traffic.



### Mapeflex® Primer

#### One-Component, Solvent-Based Primer for Mapeflex Polyurethane Sealants

Mapeflex Primer is a one-component, low-viscosity, solvent-based primer used to promote adhesion of Mapeflex polyurethane sealants on concrete in wet or immersed environments.

|      | Product Code | Packaging                              |
|------|--------------|----------------------------------------|
| U.S. | 2UR214656    | Dual cartridge, 20.3 U.S. oz. (600 mL) |
|      | 2UR214638    | Part A, Pail: 5 U.S. gals. (18.9 L)    |
|      | 2UR999938    | Part B, Pail: 5 U.S. gals. (18.9 L)    |

|      | Product Code | Packaging                            |
|------|--------------|--------------------------------------|
| U.S. | 1910856      | Dual cartridge: 22 U.S. oz. (651 mL) |
|      | 1910838      | Part A, Pail: 5 U.S. gals. (18.9 L)  |
|      | 1910938      | Part B, Pail: 5 U.S. gals. (18.9 L)  |
|      | 1910878      | Part A, Drum: 55 U.S. gals. (208 L)  |
|      | 1910978      | Part B, Drum: 55 U.S. gals. (208 L)  |

|      | Product Code | Packaging                    |
|------|--------------|------------------------------|
| U.S. | 2675937      | Bottle: 16 U.S. oz. (473 mL) |
|      | 2675924      | Pail: 1 U.S. gal. (3.79 L)   |



**Mapeflex® P2 SL**

**Two-Component, Self-Leveling, Polyurethane Sealant**

Mapeflex P2 SL is a two-component, self-leveling, polyurethane, elastomeric sealant that meets the requirements of ASTM C920.



**Mapeflex® P2 NS**

**Two-Component, Nonsag, Polyurethane Sealant**

Mapeflex P2 NS is a two-component, nonsag, polyurethane sealant that meets the requirements of ASTM C920.



**Planiseal® MB**

**Moisture Barrier and Consolidating Epoxy**

Planiseal MB is a 100%-solids, epoxy moisture barrier that is designed to effectively stop moisture-related problems with toppings, as well as act as a surface-consolidating epoxy primer.

|      | Product Code | Packaging                     |
|------|--------------|-------------------------------|
| U.S. | 1910106      | Pail: 1.5 U.S. gals. (5.68 L) |
|      | 1910112      | Pail: 3 U.S. gals. (11.4 L)   |
|      | 1910117      | Pail: 4.5 U.S. gals. (17.0 L) |

|      | Product Code | Packaging                     |
|------|--------------|-------------------------------|
| U.S. | 1910306      | Pail: 1.5 U.S. gals. (5.68 L) |

|      | Product Code | Packaging                             |
|------|--------------|---------------------------------------|
| U.S. | 2438111      | Part A, Pail: 2.2 U.S. gals. (8.33 L) |
|      | 2438211      | Part B, Jug: 0.8 U.S. gal. (3.03 L)   |



**Ultratop® [NA]**

**High-Performance, Self-Leveling Concrete Topping**

*Ultratop* is a self-leveling, self-curing, sealed or polished topping that is specially formulated for fast-track resurfacing of horizontal wear surfaces.



**Ultratop® Loft F [NA]**

**Coarse-Textured, Cement-Based Micro-Topping**

*Ultratop Loft F* is a one-component, cement-based decorative topping that is troweled and applied in two layers 1/16" (1.5 mm) in thickness. It is specially formulated for abrasion resistance in designing non-uniform and non-homogeneous finishes with a broad range of coarse-textured finishing effects on indoor decorative surfaces. *Ultratop Loft F* can be used on a wide variety of substrates and combines excellent versatility with easy application.



**Ultratop® Loft W [NA]**

**Fine-Textured, Cement-Based Micro-Topping**

*Ultratop Loft W* is a one-component, cement-based decorative topping that is troweled and applied in two layers 1/16" (1.5 mm) in thickness. It is specially formulated for abrasion resistance in designing non-uniform and non-homogeneous finishes with a broad range of finishing effects on indoor decorative surfaces. *Ultratop Loft W* can be used on a wide variety of substrates and combines excellent versatility with easy application.

|      | Product Code | Packaging                             |
|------|--------------|---------------------------------------|
| U.S. | 3UT500023    | Bag (White): 50 lbs. (22.7 kg)        |
|      | 3UT500023    | Bag (Natural Gray): 50 lbs. (22.7 kg) |

|      | Product Code | Packaging                      |
|------|--------------|--------------------------------|
| U.S. | 3UL500805    | Bag (Natural): 11 lbs. (5 kg)  |
|      | 3UL500005    | Bag (White): 11 lbs. (5 kg)    |
|      | 3UL500820    | Bag (Natural): 44 lbs. (20 kg) |
|      | 3UL500020    | Bag (White): 44 lbs. (20 kg)   |

|      | Product Code | Packaging                      |
|------|--------------|--------------------------------|
| U.S. | 3UM500805    | Bag (Natural): 11 lbs. (5 kg)  |
|      | 3UM500010    | Bag (White): 11 lbs. (5 kg)    |
|      | 3UM500820    | Bag (Natural): 44 lbs. (20 kg) |
|      | 3UM500020    | Bag (White): 44 lbs. (20 kg)   |



**Primer Grip™ White [NA]**

**Low-VOC, Synthetic, Resin-Based Primer for Ultratop® Loft Toppings**

*Primer Grip White* is a ready-to-use, low-VOC, synthetic resin-based primer with bond-promoting silica aggregates suspended in dispersion. It enhances the performance and adhesion of MAPEI's *Ultratop Loft* toppings to existing ceramic tile and other difficult-to-bond-to substrates in vertical applications. Suitable for a wide variety of substrates, *Primer Grip White* combines excellent versatility with an easy, low-odor application.



**Primer LT™ [NA]**

**Water-Based, Acrylic Primer for Ultratop® Loft Toppings**

*Primer LT* is a low-VOC, water-based acrylic primer that enhances the performance and adhesion between layers of *Ultratop Loft* toppings for walls and floors. *Primer LT* combines excellent versatility with easy, low-odor applications for indoor use.



**Mapelux™ Opaca [NA]**

**Clear, Matte, Protective Wax for Ultratop® System Floors**

*Mapelux Opaca* is a one-component, matte wax used as wear protector over MAPEI's *Mapefloor™ Finish* products for *Ultratop* systems and *Ultratop Loft* systems.

|      | Product Code | Packaging                     |
|------|--------------|-------------------------------|
| U.S. | 1560706      | Pail: 1.5 U.S. gals. (5.68 L) |

|      | Product Code | Packaging                    |
|------|--------------|------------------------------|
| U.S. | 1559211      | Jug: 1.5 U.S. gals. (5.68 L) |

|      | Product Code | Packaging                     |
|------|--------------|-------------------------------|
| U.S. | 1795110      | Pail: 2.6 U.S. gals. (9.84 L) |





### Ultratop® Base Coat [NA]

#### One-Component, Clear, Water-Based Acrylic Basecoat for Mapefloor™ Finish Topcoats

*Ultratop Base Coat* is one-component, acrylic agent in water dispersion is used as a basecoat before applying a *Mapefloor Finish* topcoat over *Ultratop* and *Ultratop Loft* products. *Ultratop Base Coat* used with *Mapefloor Finish* provides a high-performance finish.

|      | Product Code | Packaging                     |
|------|--------------|-------------------------------|
| U.S. | 2564810      | Pail: 2.6 U.S. gals. (9.84 L) |



### Ultratop® Easycolor [NA]

#### Concentrated, Liquid Pigment Solution for Coloring Ultratop Loft Micro-Toppings

*Ultratop Easycolor* is a one-component, concentrated, liquid pigment solution available in a broad range of hues. It is specially formulated to color MAPEI's trowel-applied, cementitious micro-toppings *Ultratop Loft F* [NA] and *Ultratop Loft W* [NA].

|      | Product Code | Packaging                    |
|------|--------------|------------------------------|
| U.S. | 3UU092028    | Pail: 1.59 U.S. qts. (1.5 L) |



### Ultratop® SP

#### High-Performance, Polishable, Self-Leveling Topping for a Fine-Aggregate Finish

*Ultratop SP* is a polishable, self-leveling, cementitious topping that provides a fine-aggregate exposed finish. *Ultratop SP* is engineered for fast-track resurfacing of horizontal wear surfaces.

|      | Product Code       | Packaging                                                     |
|------|--------------------|---------------------------------------------------------------|
| U.S. | 2358723<br>2358623 | Bag: Gray, 50 lbs. (22.7 kg)<br>Bag: White, 50 lbs. (22.7 kg) |



**Mapefloor I 302 SL [NA]**

**Two-Component, Multipurpose, Epoxy Resin for Industrial Flooring**

Mapefloor I 302 SL is a two-component, epoxy resin for industrial flooring. It is suitable for both self-leveling and textured coatings, as well as for multilayered broadcast systems and seal coats for epoxy mortar screeds. Mapefloor I 302 SL offers excellent chemical and abrasion resistance in both wet and dry processing areas, which makes it particularly suitable for the food and beverage industry, shopping centers and industrial warehouses. Mapefloor I 302 SL creates surfaces that are flat and seamless, with a highly attractive finish.



**Mapefloor™ I 900**

**Two-Component, Epoxy Resin for Industrial Flooring**

Mapefloor I 900 is a two-component, low-viscosity, epoxy resin that is used as a primer for resinous flooring systems and as a binder to blend and adhere large aggregates for the Ultratop® Terrazzo System.



**Mapecure™ AP**

**General-Purpose, Acrylic Polymer Curing and Sealing Compound**

Mapecure AP is a general-purpose, solvent-borne, styrenated acrylic polymer curing and sealing compound, designed for curing new concrete and sealing new and hardened concrete. Mapecure AP produces a medium-gloss, clear film to protect concrete surfaces from water intrusion, dirt and abrasion.

| Product Code                                        | Packaging                             |
|-----------------------------------------------------|---------------------------------------|
| Part A, Pail (pre-tinted), 1.93 U.S. gals. (7.31 L) |                                       |
| 5HX200110                                           | RAL 1001, Beige                       |
| 5HX201410                                           | RAL 1018, Zinc Yellow                 |
| 5HX203410                                           | RAL 3009, Oxide Red                   |
| 5HX204210                                           | RAL 3020, Traffic Red                 |
| 5HX206510                                           | RAL 5007, Brilliant Blue              |
| 5HX207410                                           | RAL 5017, Traffic Blue                |
| 5HX211110                                           | RAL 6028, Pine Green                  |
| 5HX212910                                           | RAL 7012, Basalt Grey                 |
| 5HX213810                                           | RAL 7030, Stone Grey                  |
| 5HX214610                                           | RAL 7038, Agate Grey                  |
| 5HX215310                                           | RAL 7046, Telegrey                    |
| 5HX217710                                           | RAL 9003, Signal White                |
| 5HX099910                                           | Part B, Pail: 0.71 U.S. gal. (2.69 L) |

| Product Code | Packaging                           |
|--------------|-------------------------------------|
| 2578614      | Part A, Pail: 2.38 U.S. gals. (9 L) |
| 2578714      | Part B, Pail: 1.32 U.S. gals. (5 L) |

| Product Code | Packaging                   |
|--------------|-----------------------------|
| 1691819      | Pail: 5 U.S. gals. (18.9 L) |
| 1691878      | Drum: 55 U.S. gals. (208 L) |



### Mapecure™ CS WB

#### Glossy, Water-Based, Acrylic Sealer

Mapecure CS WB is a one-part, water-based, transparent, glossy sealer designed for protecting concrete surfaces – from highly textured stamped concrete to smooth self-leveling toppings.

|      | Product Code | Packaging                   |
|------|--------------|-----------------------------|
| U.S. | 1695219      | Pail: 5 U.S. gals. (18.9 L) |



### Mapecure™ CS

#### Solvent-Based, Pure Acrylic Concrete Sealer

Mapecure CS is a 100%-pure acrylic polymer concrete sealer designed to protect and enhance cured concrete. Mapecure CS produces a non-yellowing, satin finish film that highlights the appearance of decorative concrete, including stamped concrete, colored concrete pavers and acid-stained concrete.

|      | Product Code       | Packaging                                                  |
|------|--------------------|------------------------------------------------------------|
| U.S. | 1696719<br>1696778 | Pail: 5 U.S. gals. (18.9 L)<br>Drum: 55 U.S. gals. (208 L) |



### Mapecure™ DR and Mapecure DR 1D

#### Water-Based, Dissipating-Resin Curing Compounds

Mapecure DR and Mapecure DR 1D are water-based, liquid, membrane-forming curing compounds for freshly placed concrete. Formulated from specially selected dissipating hydrocarbon resins, they are designed to retain water in the concrete for proper hydration, and then to begin breaking down and deteriorating when exposed to traffic, sunlight and weathering. Mapecure DR 1D includes an already added fugitive dye, with the same performance that Mapecure DR offers.

|      | Product Code          | Packaging                      |
|------|-----------------------|--------------------------------|
| U.S. | <b>Mapecure DR</b>    |                                |
|      | 1693919               | Pail: 5 U.S. gals. (18.9 L)    |
|      | 49177                 | Drum: 55 U.S. gals. (208 L)    |
|      | 1693984               | Tote: 275 U.S. gals. (1 041 L) |
|      | <b>Mapecure DR 1D</b> |                                |
|      | 1695119               | Pail: 5 U.S. gals. (18.9 L)    |
|      | 1695178               | Drum: 55 U.S. gals. (208 L)    |
|      | 1695184               | Tote: 275 U.S. gals. (1 041 L) |



**Mapecure™ UV**

**High-Solids, Acrylic Curing and Sealing Compound**

Mapecure UV is a UV-stable, solvent-based, styrenated acrylic copolymer especially formulated for curing and sealing fresh concrete. Mapecure UV is suitable on concrete surfaces, creating a continuous glossy appearance.



**Mapecure™ UV WB**

**High-Solids, Water-Based, Acrylic Curing and Sealing Compound**

Mapecure UV WB is a UV-stable, low-VOC, water-based, styrenated acrylic copolymer especially formulated for curing and sealing fresh concrete. Mapecure UV WB is suitable on concrete surfaces, creating a continuous glossy appearance.



**Mapecrete™ Film**

**Evaporation Retardant**

Mapecrete Film is designed to retard moisture evaporation on concrete surfaces and aid in finishing concrete flatwork. Mapecrete Film forms a thin film to prevent rapid moisture loss on freshly placed concrete surfaces.

|      | Product Code | Packaging                   |
|------|--------------|-----------------------------|
| U.S. | 1696619      | Pail: 5 U.S. gals. (18.9 L) |
|      | 1696678      | Drum: 55 U.S. gals. (208 L) |

|      | Product Code | Packaging                   |
|------|--------------|-----------------------------|
| U.S. | 1696504      | Pail: 1 U.S. gal. (3.79 L)  |
|      | 1696519      | Pail: 5 U.S. gals. (18.9 L) |
|      | 1696578      | Drum: 55 U.S. gals. (208 L) |

|      | Product Code | Packaging                   |
|------|--------------|-----------------------------|
| U.S. | 1797504      | Jug: 1 U.S. gal. (3.79 L)   |
|      | 1797519      | Pail: 5 U.S. gals. (18.9 L) |
|      | 1797578      | Drum: 55 U.S. gals. (208 L) |



**Mapecrete™ Hard FS**

**Liquid, Magnesium Fluorosilicate Densifier and Dustproof for Concrete**

Mapecrete Hard FS is a water-based, magnesium fluorosilicate solution for horizontal concrete surfaces that chemically bonds with the free lime in concrete to produce a denser, more durable and chemically resistant floor surface.

|      | Product Code       | Packaging                                                  |
|------|--------------------|------------------------------------------------------------|
| U.S. | 1797419<br>1797478 | Pail: 5 U.S. gals. (18.9 L)<br>Drum: 55 U.S. gals. (208 L) |



**Mapecrete™ Hard LI**

**Lithium Silicate Densifier and Sealer for Concrete**

Mapecrete Hard LI is a water-based, VOC-free, lithium silicate solution used to densify, seal and dustproof horizontal, hard-troweled concrete surfaces. It penetrates the concrete surface, chemically reacts with the free lime and produces a dense, hard matrix within the concrete and a more durable surface on top.

|      | Product Code       | Packaging                                                  |
|------|--------------------|------------------------------------------------------------|
| U.S. | 1797119<br>1797178 | Pail: 5 U.S. gals. (18.9 L)<br>Drum: 55 U.S. gals. (208 L) |



**Mapecrete™ Hard SB**

**Silicate-Blend, Liquid Densifier, Sealer and Dustproof for Concrete**

Mapecrete Hard SB is a special blend of silicate and silicate polymers specifically designed to penetrate concrete in order to densify, seal, dustproof and harden the surface. It is formulated to chemically react and create an internal bond that increases surface density, durability and abrasion resistance.

|      | Product Code       | Packaging                                                  |
|------|--------------------|------------------------------------------------------------|
| U.S. | 1797219<br>1797278 | Pail: 5 U.S. gals. (18.9 L)<br>Drum: 55 U.S. gals. (208 L) |





**Mapecrete™ Hard SI**

**Sodium Silicate Densifier for Concrete**

Mapecrete Hard SI is a clear, water-based sodium silicate densifier used to harden and dustproof concrete surfaces. It chemically reacts with the free lime and calcium carbonate in concrete, forming a dense surface.

|      | Product Code       | Packaging                                                  |
|------|--------------------|------------------------------------------------------------|
| U.S. | 1797319<br>1797378 | Pail: 5 U.S. gals. (18.9 L)<br>Drum: 55 U.S. gals. (208 L) |



**PlaniLevel™ 360**

**Self-Leveling Underlayment**

PlaniLevel 360 is a standard-performance, calcium-aluminate-based, self-leveling underlayment and repair mix for interior concrete and engineer-approved floors for use before the installation of traditional floor coverings.

|      | Product Code | Packaging              |
|------|--------------|------------------------|
| U.S. | 7494123      | Bag: 50 lbs. (22.7 kg) |



**PlaniLevel™ 420**

**High-Compressive-Strength, Self-Leveling Underlayment**

PlaniLevel 420 is a high-strength, calcium-aluminate-based, self-leveling underlayment and repair mix designed to repair or refurbish interior, concrete, engineer-approved floors before the installation of traditional floor coverings.

|      | Product Code | Packaging              |
|------|--------------|------------------------|
| U.S. | 7494223      | Bag: 50 lbs. (22.7 kg) |



### PlaniLevel™ 450

#### Quick-Setting, High-Compressive-Strength, Self-Leveling Underlayment

*PlaniLevel 450* is a calcium-aluminate-based, quick-setting, self-drying, self-leveling underlayment and repair mix for interior, concrete, engineer-approved floors. *PlaniLevel 450* has high compressive strength and is abrasion-resistant, able to withstand light foot traffic after 2 to 3 hours and vehicular rubber-wheel traffic after 3 days.



### PlaniLevel™ 500

#### Quick-Setting, High-Compressive-Strength Underlayment and Topping

*PlaniLevel 500* is a calcium-aluminate-based, quick-setting, self-drying, self-leveling material. It is specially formulated for the resurfacing and construction of interior horizontal surfaces as a high-compressive-strength underlayment with maximum resistance to the wheel tracking and indentations experienced in softer underlayments. *PlaniLevel 500* is suitable for use as a commercial wear topping in warehouse and alternate industrial applications where an exceptionally flat and smooth concrete surface is desired.



### PlaniLevel™ 560

#### High-Compressive-Strength, Open-Environment-Rated, Self-Leveling Underlayment

*PlaniLevel 560* is an advanced hydraulic-cement-based, self-leveling compound designed for fast-track underlayment applications. It is especially formulated for leveling interior, horizontal concrete surfaces where environmental controls are not operational or the building is not enclosed. When combined with an epoxy moisture barrier and an epoxy primer with sand broadcast, *PlaniLevel 560* creates a leveling system that improves construction efficiency and eliminates the wait times before floor coverings can be installed.

|      | Product Code | Packaging              |
|------|--------------|------------------------|
| U.S. | 7494323      | Bag: 50 lbs. (22.7 kg) |

|      | Product Code | Packaging              |
|------|--------------|------------------------|
| U.S. | 7494523      | Bag: 50 lbs. (22.7 kg) |

|      | Product Code | Packaging              |
|------|--------------|------------------------|
| U.S. | 0348923      | Bag: 50 lbs. (22.7 kg) |



**Primer L™**

**Advanced-Technology, Acrylic Latex Primer for Concrete**

*Primer L* is a concentrated, solvent-free acrylic primer used before the installation of underlayments. It is green for easy identification. *Primer L* improves the bond between a properly prepared and profiled concrete substrate, and a self-leveling underlayment. *Primer L* can also be used as a primer for gypsum-based underlayments and patches.

|      | Product Code       | Packaging                                                 |
|------|--------------------|-----------------------------------------------------------|
| U.S. | 7493519<br>7493504 | Pail: 1 U.S. gal. (3.79 L)<br>Pail: 5 U.S. gals. (18.9 L) |

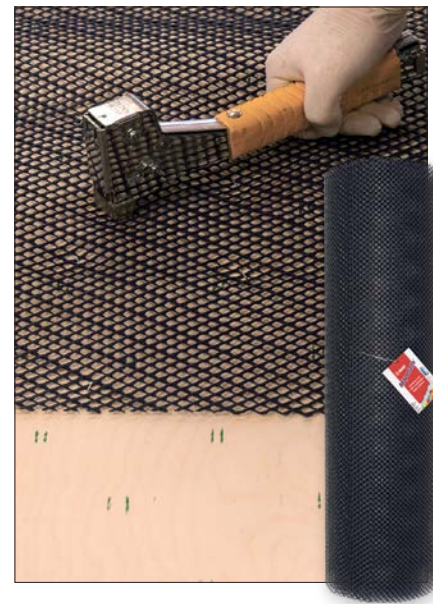


**Primer T™**

**All-Purpose Primer for Self-Leveling Underlayments**

*Primer T* is a low-VOC, magenta-colored, water-based acrylic primer that enhances the performance and adhesion of self-leveling underlayments (SLUs) on nonporous and porous substrates. Suitable for a wide variety of substrates, *Primer T* combines excellent versatility with easy, low-odor application.

|      | Product Code | Packaging                  |
|------|--------------|----------------------------|
| U.S. | 7493808      | Jug: 2 U.S. gals. (7.57 L) |



**Mapelath™**

**Synthetic Lath**

*Mapelath* is a lightweight, noncorroding, alkali-resistant synthetic lath used as a substitute for traditional metal lath. It is lighter and easier to work with.

|      | Product Code | Packaging                                                              |
|------|--------------|------------------------------------------------------------------------|
| U.S. | 7340123      | Roll: 27" x 75' (0,69 x 22,9 m);<br>168 sq. ft. (15,6 m <sup>2</sup> ) |





**MAPEI Self-Leveling Mixing Kit**

MAPEI Self-Leveling Mixing Kit consists of a 15-gallon (56.8 L) double-handled mixing barrel with a lid, 1" (2.5 cm) spike shoes, a 5-quart (4.73 L) measuring pitcher, an oval mixing paddle, a smoother, a gauge rake and a three-part broom handle.

|      | Product Code | Packaging     |
|------|--------------|---------------|
| U.S. | 7966115      | Kit in barrel |



**MAPEI Self-Leveling Mixing Barrel Cart**

**Barrel Cart for Mixing Self-Levelers**

MAPEI Self-Leveling Mixing Barrel Cart is designed to improve efficiency in barrel-mixing MAPEI self-leveling underlayments, toppings and mortars that require jobsite mixing. The cart's barrel band attaches snugly to the MAPEI Self-Leveling Mixing Barrel (sold separately), holding it fast during mixing and keeping it in place during material pouring/placement. MAPEI Self-Leveling Mixing Barrel Cart has been designed to roll easily over textured surfaces and enables easy, precise placement of the mix. The double-handle design allows for the cart to be easily moved and tipped, reducing strain on the cart body and controlling the material placement.

|      | Product Code | Packaging |
|------|--------------|-----------|
| U.S. | 7966120      | Cart      |



**MAPEI Self-Leveling Mixing Barrel**

**Mixing Barrel for Self-Leveling Products**

MAPEI Self-Leveling Mixing Barrel is perfect for the blending of cement and gypsum self-leveling underlayments, toppings and pourable mortars. The barrel easily holds up to three 50-lb. (22.7-kg) bags of material and works perfectly in conjunction with oval-shaped mixers. Two types of handles (grab handles and recessed handles) make this barrel easy to move. Used along with MAPEI Self-Leveling Mixing Barrel Cart, this barrel eases the mixing and transport process of any material that requires mixing and dispensing on commercial or residential jobsites.

|      | Product Code | Packaging |
|------|--------------|-----------|
| U.S. | 7966121      | Barrel    |





**MAPEI Self-Leveling Spike Roller**

**Spiked Roller for Self-Leveling Products**

MAPEI Self-Leveling Spike Roller has been designed specifically for cement- and gypsum-based self-leveling underlayments and toppings. The spikes are 2" (5 cm) in length, making it easy to work with deep pours of material. The shape of the spikes is also designed to cut through the material easily, creating a much smoother, homogenous material. Measuring 20" (51 cm) in width, MAPEI Self-Leveling Spike Roller enables quick work on large surface areas.

|      | Product Code | Packaging |
|------|--------------|-----------|
| U.S. | 781701       | Roller    |

Building a **SUSTAINABLE** future together

more sustainable for the **PLANET**

more sustainable in **PROJECTS**

**MAPEI**

MAPEI USA • MAPEI Caribe



# BUILDING AND INFRASTRUCTURE PRODUCT SOLUTIONS



Epoxy joint sealants and deck overlays/adhesives



Concrete restoration systems



FRP strengthening systems



Underground tunneling products



Products for sports flooring



Concrete admixtures and additives



Waterproofing systems



Deck and floor-covering installation systems



Self-leveling concrete flooring and overlays



Concrete finish coatings



— MAPEI USA • MAPEI Caribe —

**MAPEI Headquarters of North America**

1144 East Newport Center Drive  
Deerfield Beach, Florida 33442  
1-888-US-MAPEI (1-888-876-2734) /  
(954) 246-8888

**Technical Services**

1-888-365-0614 (U.S. and Puerto Rico)

**Customer Service**

1-800-42-MAPEI (1-800-426-2734)

Copyright ©2024 by MAPEI Corporation (“MAPEI”) and all rights are reserved. All intellectual property rights and other information contained in this document are the exclusive property of MAPEI (or its parent or related companies), unless otherwise noted. No part of this document may be reproduced or transmitted in any form without the prior written consent of MAPEI.

Printed in the USA.

