

How to measure for custom-made *Mapeheat™ Mat*



Custom made just for you

When a standard, rectangular *Mapeheat Mat* will not adequately cover a more complex room/area shape, custom-made *Mapeheat Mat* enables perfect coverage with the same quick and easy installation.

Once the room/area dimensions are submitted, the custom mats are manufactured in only three days. The custom mat will match the exact dimensions provided by the customer even for the most complex room/area shapes. Because the heating wire is embedded in the customized *Mapeheat Mat* and does not need to be configured during installation, the heat coverage is guaranteed to be consistent throughout the desired heating area.

FEATURES/BENEFITS OF MAPEHEAT MAT

Perfect fit for any room

- Custom-made *Mapeheat Mat* can match any space, allowing for odd shapes, curves, voids and extra heat output when required.

Great for a variety of flooring types

- *Mapeheat Mat* is great for tile installations when topped with modified mortar. If the finished flooring type is engineered wood or luxury vinyl, a self-leveler goes directly on top of the mat before the flooring is installed.

Perfect heat distribution

- *Mapeheat Mat* eliminates the need to calculate and experiment with wire spacing during the installation. Consistent wire spacing and perfect heat coverage are guaranteed.

Easy to install

- *Mapeheat Mat* is pre-built and ready to install right out the box. Simply adhere *Mapeheat Mat* to the subfloor using a modified mortar and flooring can be immediately installed on top.

Rapid installation with consistent results

- Our made-to-measure, pre-built mat solution saves time and cost during installation. Because on-site manipulation and wire-path design are not required, installation is fast and results are consistent, whether your project is one master bathroom or every bathroom and kitchen in a 50-story project.

Minimal increase in floor height

- *Mapeheat Mat* guarantees minimal floor height increase. At only 1/8" thick, the ultra low profile of this product reduces buildup on the floor, which makes transitions possible without the use of transition strips.

Option for higher heat output

- *Mapeheat Mat* can be manufactured to produce the standard 12 watts per sq. ft. (41 BTUs per sq. ft.), or 15 watts per sq. ft. (51 BTUs per sq. ft.) for areas where more heat is needed at no additional cost.

Short delivery time

- Custom-made *Mapeheat Mat* can be manufactured in just three days and shipped out to the customer four days after dimensions are confirmed.



INSTALLATION IS AS EASY AS 1-2-3-4

A single custom mat can be as large as 150 sq. ft. at 120 V and 300 sq. ft. at 240 V.

STEP 1

Spread modified thin-set using a 1/4" x 1/4" minimum sized trowel.



STEP 2

Place *Mapeheat Mat* onto fresh thin-set. Press firmly to create a 100% contact between the mat, thin-set and subfloor.



STEP 3

Secure the floor sensor probe between heating wires.



STEP 4

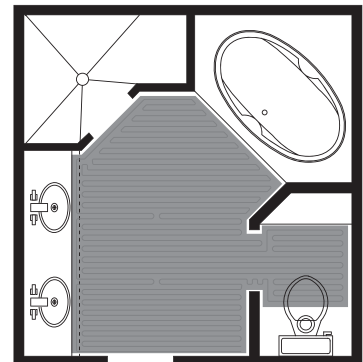
Apply a thin layer of thin-set and install tile/ stone flooring per instructions from the flooring and setting materials manufacturers.



HOW TO ORDER A CUSTOM-SIZED MAPEHEAT MAT

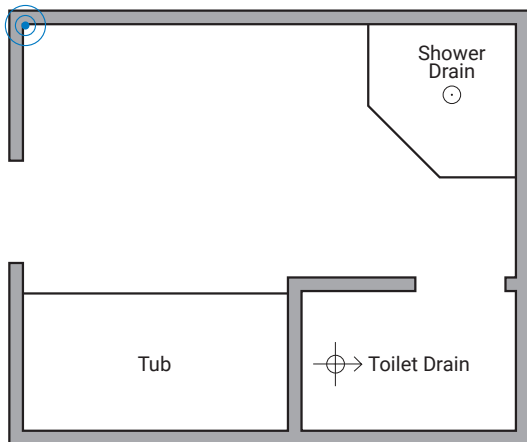
MAPEI will provide the customer an AutoCAD drawing and a quote for approval.

For orders in the USA, you can request a quote and e-mail your drawing to mapeheatUSA@mapei.com, or use the "Request a Quote for Customized Mats" online form located at www.mapei.com/us/mapeheat.

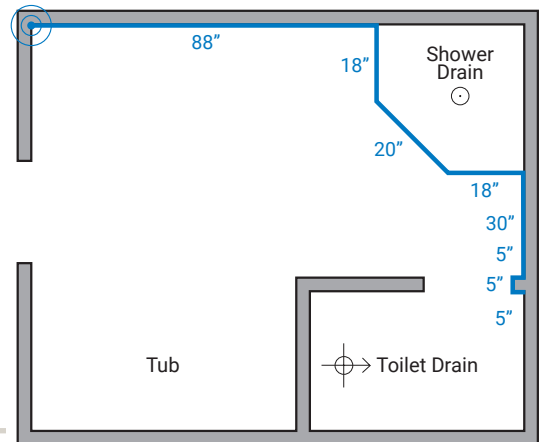


Mapeheat Mat is made in the USA.

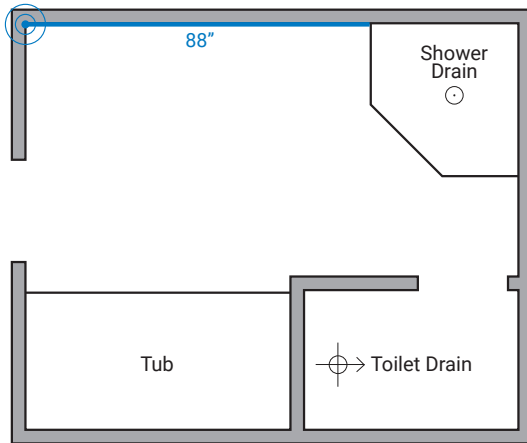
HOW TO MEASURE FOR CUSTOMIZED SIZES



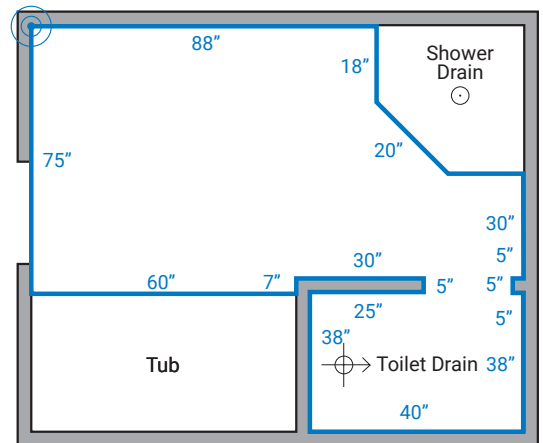
STEP 1:
Pick a starting point.



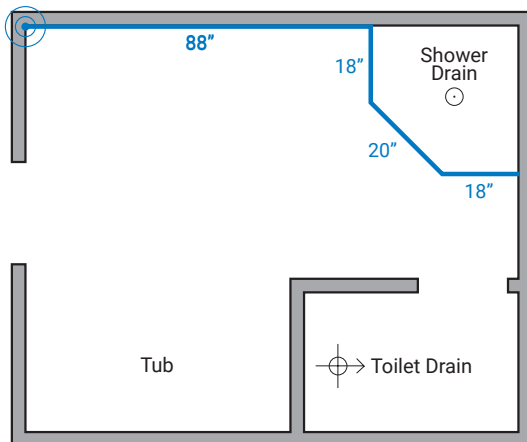
STEP 4:
Include small dimensions.



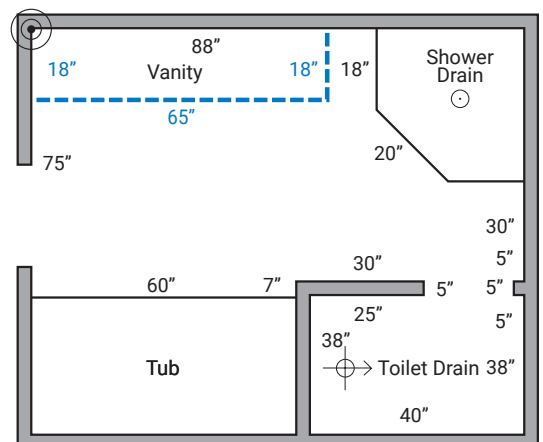
STEP 2:
Begin drawing walls of the area to be heated.



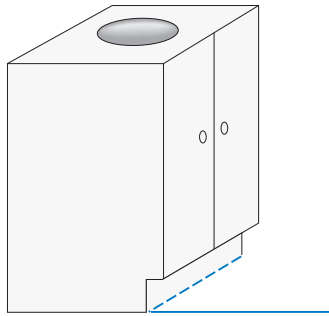
STEP 5:
Complete wall measurements to the starting point.



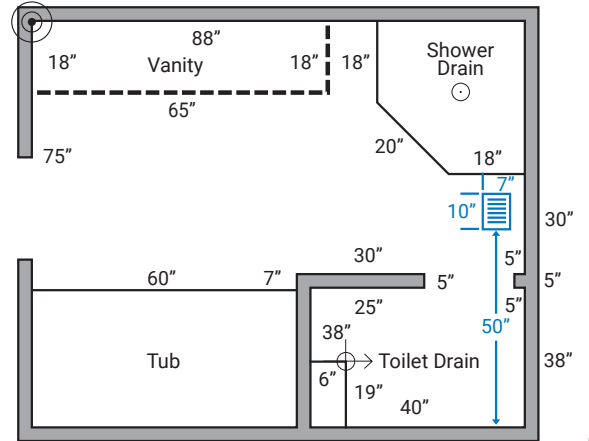
STEP 3:
Record all wall measurements.



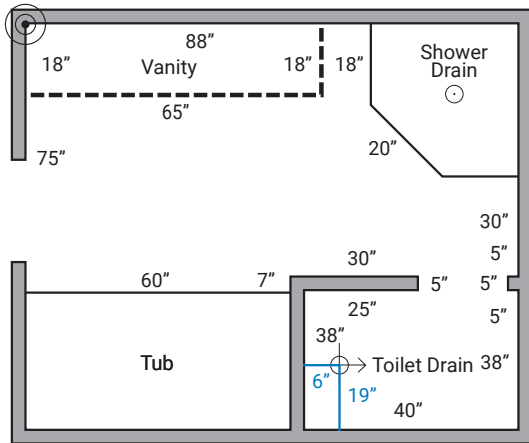
STEP 6:
Draw cabinets and vanities.



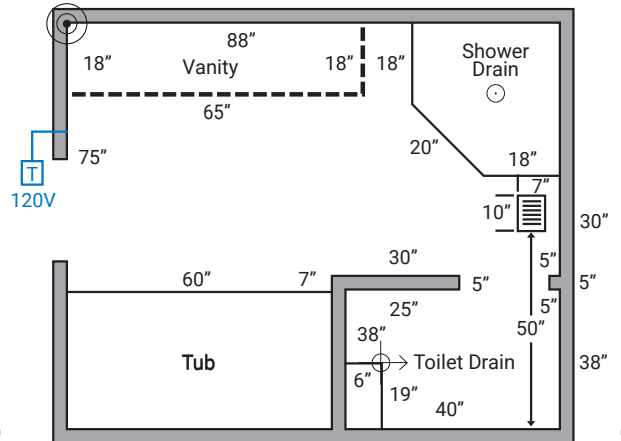
STEP 7:
Measure cabinet toe-kicks.



STEP 9:
Indicate location and dimension of vent(s)
and/or other floor obstructions.



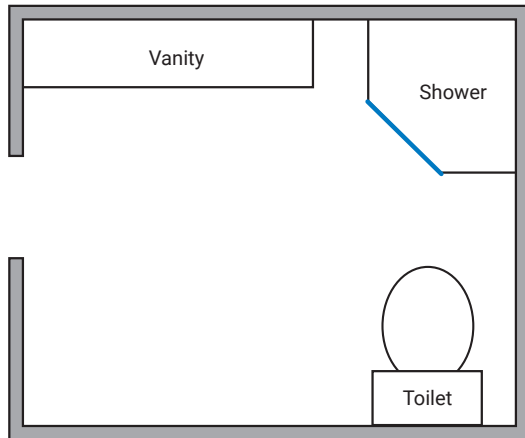
STEP 8:
Draw toilet drains.



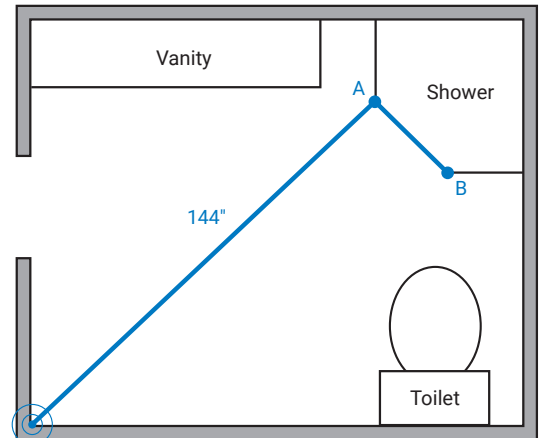
STEP 10:
Indicate thermostat locations and voltage
(120 V, 240 V or 208 V).



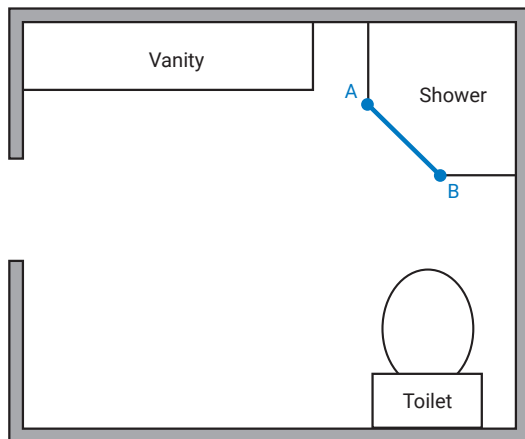
MEASURING ANGLE LOCKS



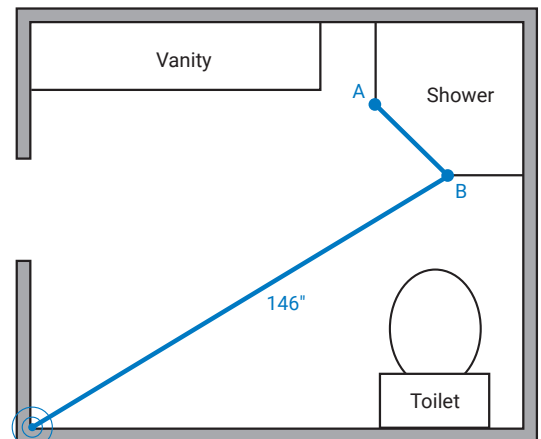
STEP 1:
Identify the angled side.



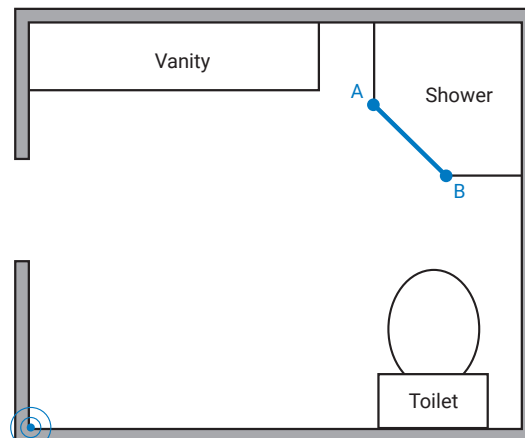
STEP 4:
Measure the distance from the start point.



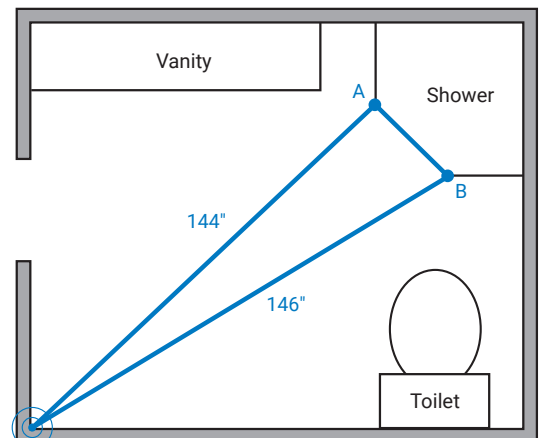
STEP 2:
Label start and end points.



STEP 5:
Measure the distance from the end point.

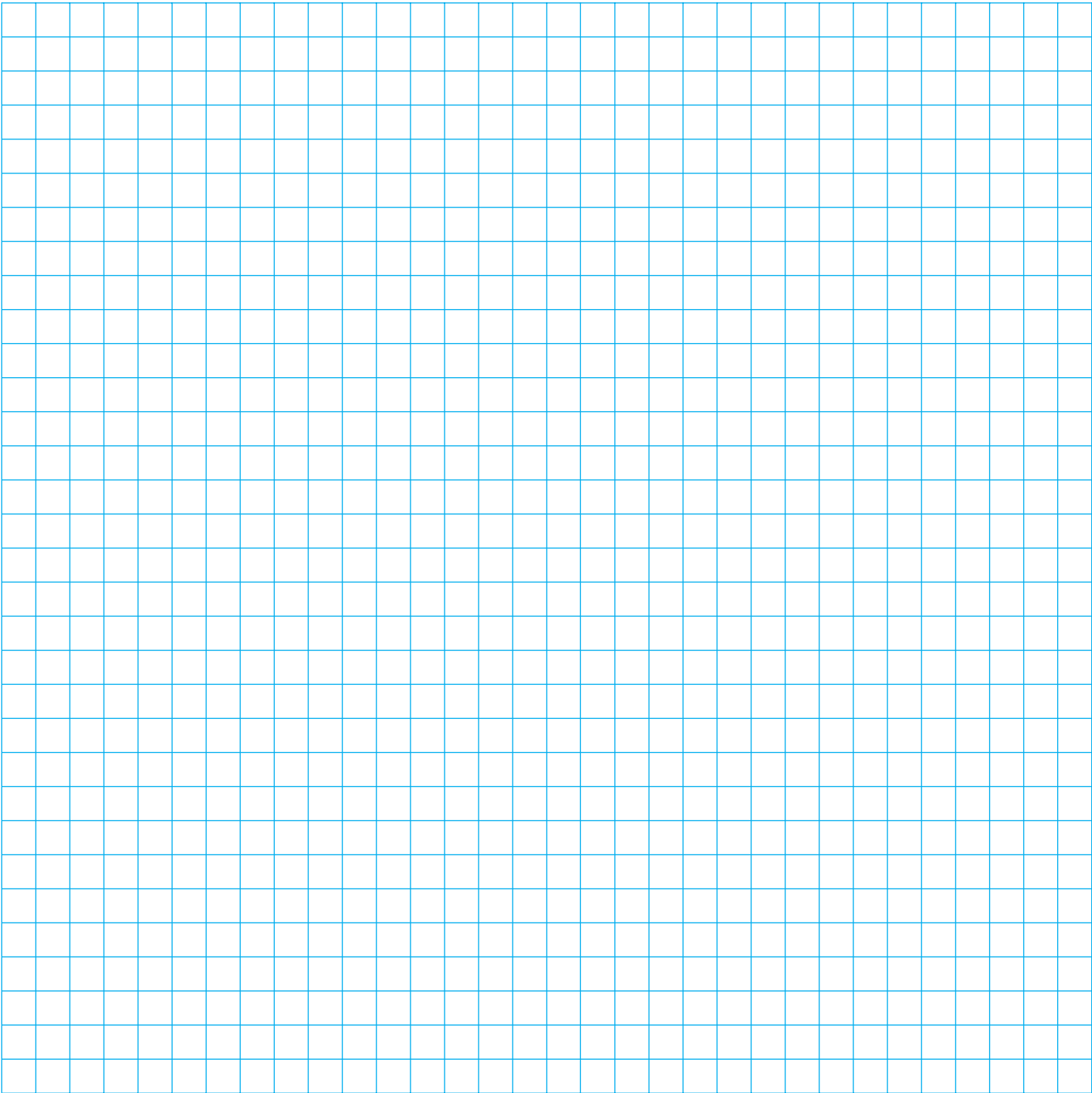


STEP 3:
Pick an opposite corner.



STEP 6:
Record both distances.

MAPEHEAT MAT MEASURING GRID



Notes

Customer Service
1-800-42-MAPEI (1-800-426-2734)
mapeheatusa@mapei.com (U.S.)
mapeheatcanada@mapei.com (Canada)



MAPEI USA

MAPEI Headquarters of North America

1144 East Newport Center Drive
Deerfield Beach, Florida 33442
1-888-US-MAPEI (1-888-876-2734) /
(954) 246-8888

Technical Services

1-800-992-6273 (U.S. and Puerto Rico)
1-800-361-9309 (Canada)

Customer Service

1-800-42-MAPEI (1-800-426-2734)

Copyright ©2020 by MAPEI Corporation (“MAPEI”) and all rights are reserved. All intellectual property rights and other information contained in this document are the exclusive property of MAPEI (or its parent or related companies), unless otherwise noted. No part of this document may be reproduced or transmitted in any form without the prior written consent of MAPEI.

Printed in the USA.

Technology from

