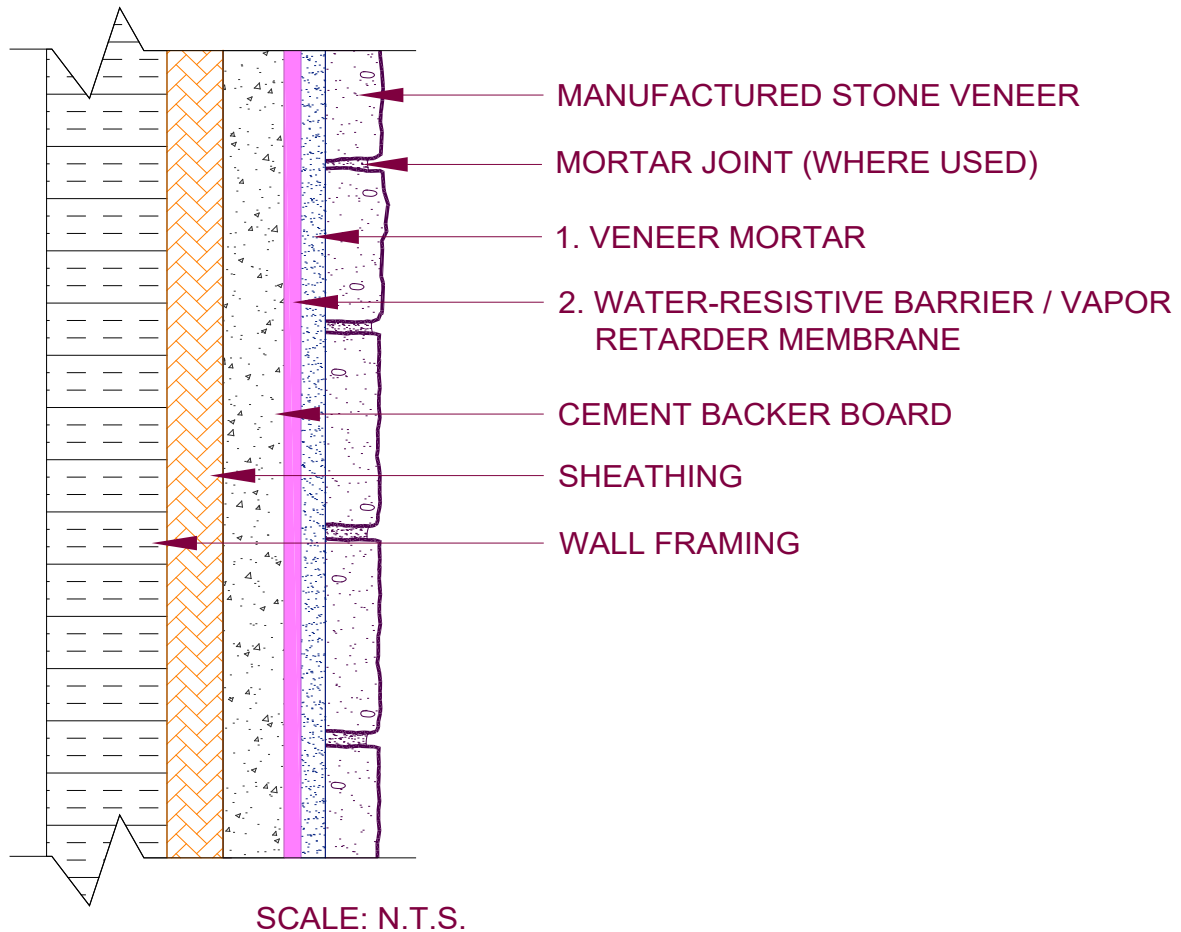


EXTERIOR WALLS

Sheathing/Cement Backer Board
Water Resistive Barrier
Manufactured Stone Veneer

02.18.25

MAPEI: MSV-Figure-4a-CBE



MAPEI Products Assembly

ANSI

1. Veneer Mortar Options:

A. <i>Granirapid</i> ® System	A118.4F, A118.15F
B. <i>Mapebond</i> ® VM Lite	A118.4ET, A118.15ET
C. <i>Mapebond</i> ® VM Rapid	A118.4FT, A118.15FT
D. <i>Mapebond</i> ® VM Super	A118.4ET, A118.15ET
E. <i>Mapebond</i> ® VM	A118.4ET

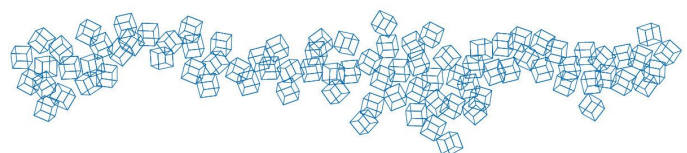
2. Water-resistive Barrier / Vapor Retarder Membrane Options:

A. <i>Mapelastic</i> ® WP	A118.10
B. <i>Mapelastic</i> ® WRB	

This CAD detail and or specification are provided as a guide, they are intended to assist in the proper detailing or specifying of a project. They are not intended for construction. The guide specification must be reviewed for code compliance and edited to make it project specific. Drawings are based on: The Masonry Society (TMS) 402 & 602, National Concrete Masonry Association (NCMA) Manufactured Stone Veneer Installation Guide, ASTM C1780 - Standard Practice for Installation Methods for Adhered Manufactured Stone Masonry Veneer, Tile Council of North America's (TCNA) 2017 TCNA Handbook for Ceramic Tile Installation and the Terrazzo, Tile and Marble Association of Canada's (TTMAC) Tile Installation Manual. Please refer to the referenced handbooks and current data sheets for complete instructions and application limitations. Some installation methods and component materials are not referenced. MAPEI encourages the user to consult all approved resources to ensure a complete assembly.



MAPEI Corporation
1144 E. Newport Center Drive
Deerfield Beach, FL 33442
Phone: 1-800-992-6273

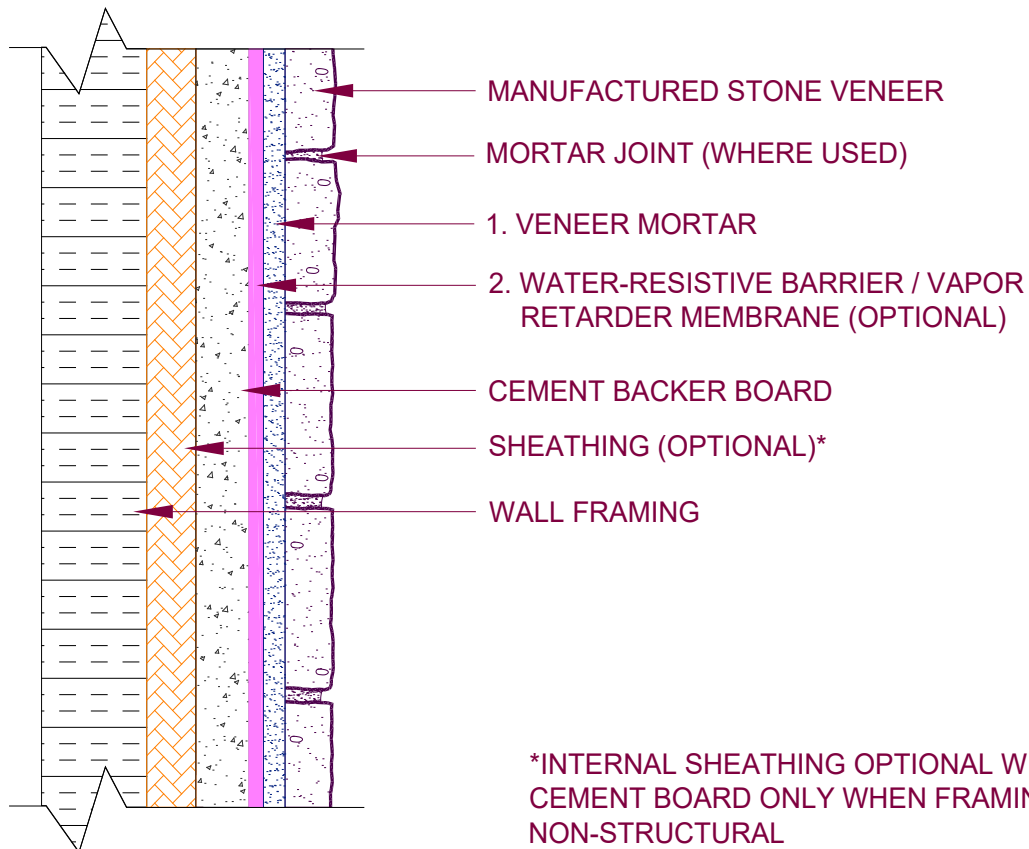


INTERIOR WALLS

Sheathing (Optional)/Cement Backer Board
Water Resistant Barrier (Optional)
Manufactured Stone Veneer

02.19.25

MAPEI: MSV-Figure-4a-CBI



SCALE: N.T.S.

MAPEI Products Assembly

ANSI

1. Veneer Mortar Options:

A. <i>Granirapid</i> ® System	A118.4F, A118.15F
B. <i>Mapebond</i> ® VM Lite	A118.4ET, A118.15ET
C. <i>Mapebond</i> ® VM Rapid	A118.4FT, A118.15FT
D. <i>Mapebond</i> ® VM Super	A118.4ET, A118.15ET
E. <i>Mapebond</i> ® VM	A118.4ET

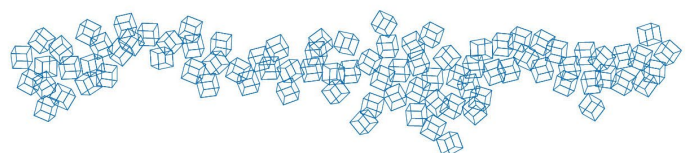
2. Water-resistive Barrier / Vapor Retarder Membrane Options:

A. <i>Mapelastic</i> ® WP	A118.10
B. <i>Mapelastic</i> ® WRB	

This CAD detail and or specification are provided as a guide, they are intended to assist in the proper detailing or specifying of a project. They are not intended for construction. The guide specification must be reviewed for code compliance and edited to make it project specific. Drawings are based on: The Masonry Society (TMS) 402 & 602, National Concrete Masonry Association (NCMA) Manufactured Stone Veneer Installation Guide, ASTM C1780 - Standard Practice for Installation Methods for Adhered Manufactured Stone Masonry Veneer, Tile Council of North America's (TCNA) 2017 TCNA Handbook for Ceramic Tile Installation and the Terrazzo, Tile and Marble Association of Canada's (TTMAC) Tile Installation Manual. Please refer to the referenced handbooks and current data sheets for complete instructions and application limitations. Some installation methods and component materials are not referenced. MAPEI encourages the user to consult all approved resources to ensure a complete assembly.



MAPEI Corporation
1144 E. Newport Center Drive
Deerfield Beach, FL 33442
Phone: 1-800-992-6273

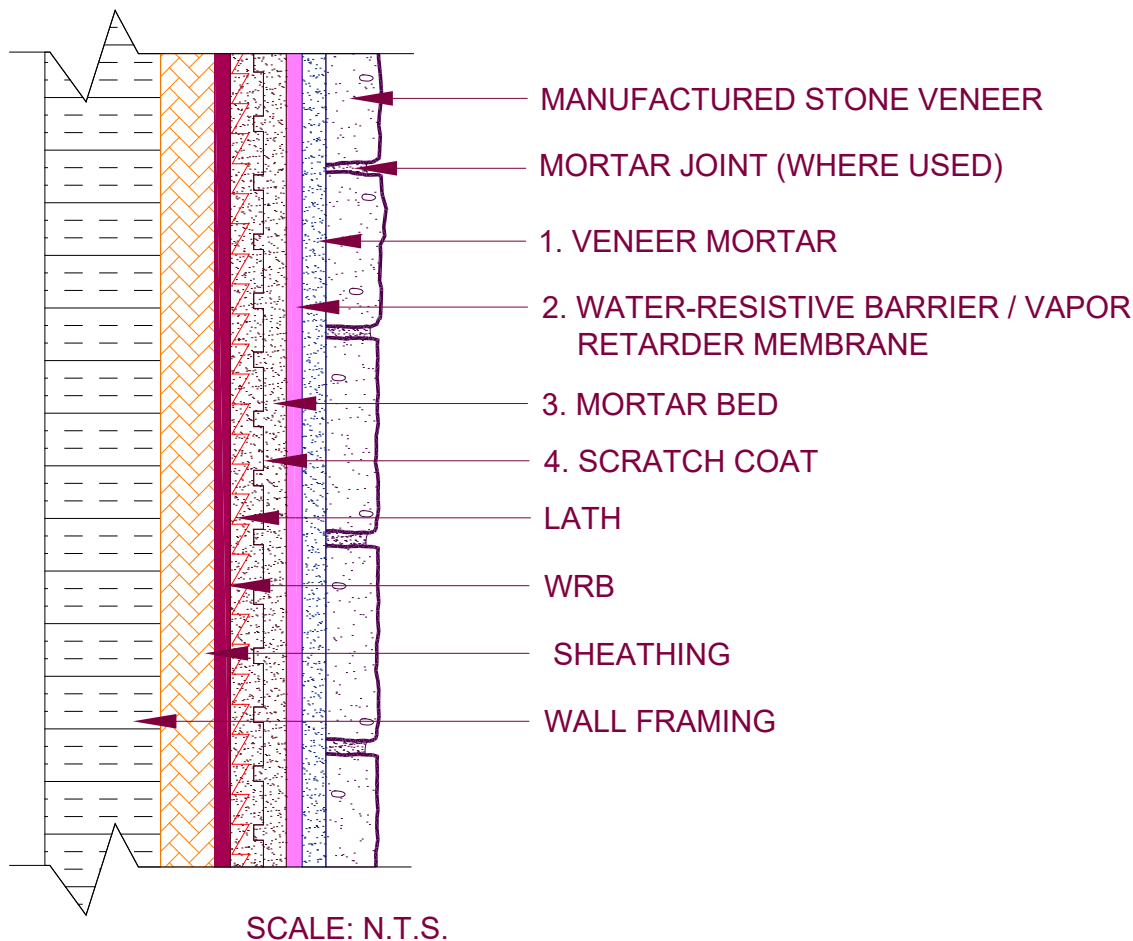


EXTERIOR WALLS

Sheathing/Mortar Bed
Water Resistive Barrier
Manufactured Stone Veneer

02.19.25

MAPEI: MSV-Figure-4a-MBE



MAPEI Products Assembly

ANSI

1. Veneer Mortar Options:

A. <i>Granirapid</i> ® System	A118.4F, A118.15F
B. <i>Mapebond</i> ® VM Lite	A118.4ET, A118.15ET
C. <i>Mapebond</i> ® VM Rapid	A118.4FT, A118.15FT
D. <i>Mapebond</i> ® VM Super	A118.4ET, A118.15ET
E. <i>Mapebond</i> ® VM	A118.4ET

2. Water-resistive Barrier / Vapor Retarder Membrane Options:

A. <i>Mapelastic</i> ® WP	A118.10
B. <i>Mapelastic</i> ® WRB	

3. Mortar Bed:

A. <i>Modified Mortar Bed</i>	A108.1B
-------------------------------	---------

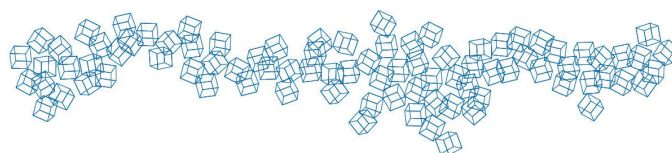
4. Scratch Coat:

A. <i>Modified Mortar Bed</i>	A108.1B
-------------------------------	---------

This CAD detail and or specification are provided as a guide, they are intended to assist in the proper detailing or specifying of a project. They are not intended for construction. The guide specification must be reviewed for code compliance and edited to make it project specific. Drawings are based on: The Masonry Society (TMS) 402 & 602, National Concrete Masonry Association (NCMA) Manufactured Stone Veneer Installation Guide, ASTM C1780 - Standard Practice for Installation Methods for Adhered Manufactured Stone Masonry Veneer, Tile Council of North America's (TCNA) 2017 TCNA Handbook for Ceramic Tile Installation and the Terrazzo, Tile and Marble Association of Canada's (TTMAC) Tile Installation Manual. Please refer to the referenced handbooks and current data sheets for complete instructions and application limitations. Some installation methods and component materials are not referenced. MAPEI encourages the user to consult all approved resources to ensure a complete assembly.



MAPEI Corporation
1144 E. Newport Center Drive
Deerfield Beach, FL 33442
Phone: 1-800-992-6273

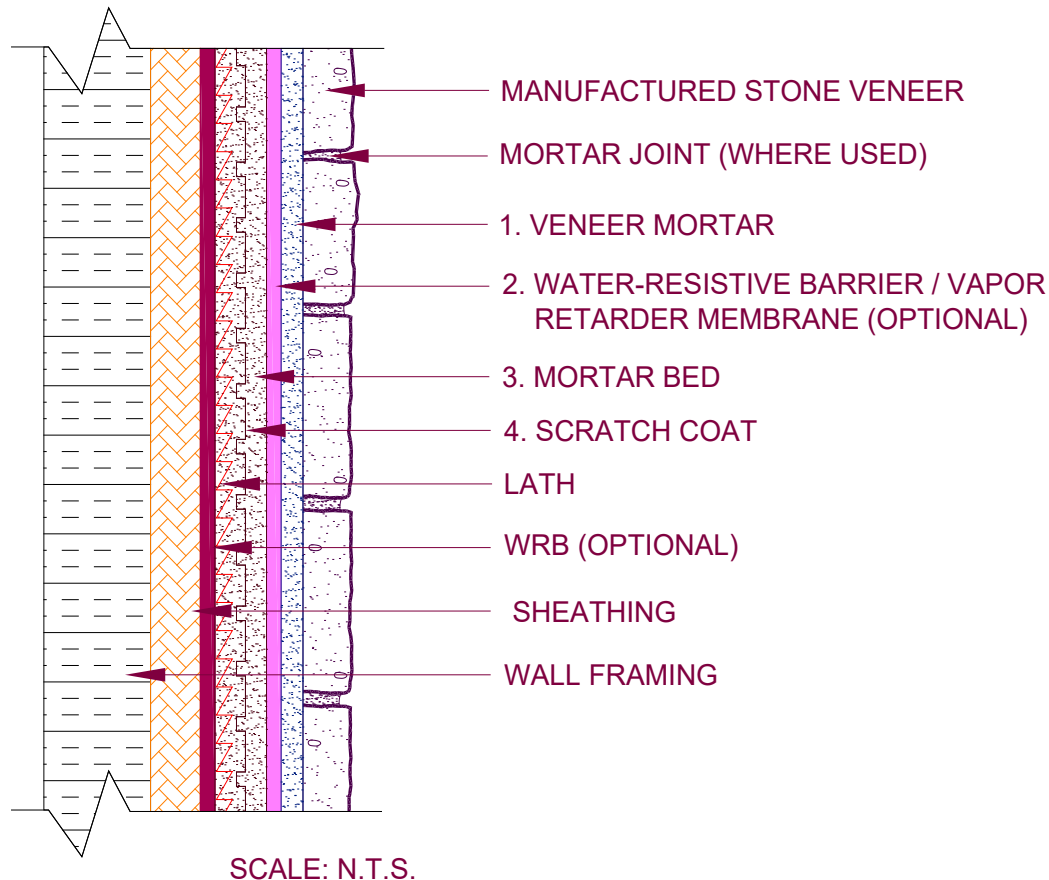


INTERIOR WALLS

Sheathing/Mortar Bed
Water Resistive Barrier (Optional)
Manufactured Stone Veneer

02.19.25

MAPEI: MSV-Figure-4a-MBI



MAPEI Products Assembly

ANSI

1. Veneer Mortar Options:

A. <i>Granirapid</i> ® System	A118.4F, A118.15F
B. <i>Mapebond</i> ® VM Lite	A118.4ET, A118.15ET
C. <i>Mapebond</i> ® VM Rapid	A118.4FT, A118.15FT
D. <i>Mapebond</i> ® VM Super	A118.4ET, A118.15ET
E. <i>Mapebond</i> ® VM	A118.4ET

2. Water-resistive Barrier / Vapor Retarder Membrane Options:

A. <i>Mapelastic</i> ® WP	A118.10
B. <i>Mapelastic</i> ® WRB	

3. Mortar Bed:

A. <i>Modified Mortar Bed</i>	A108.1B
-------------------------------	---------

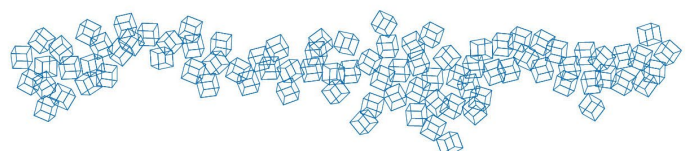
4. Scratch Coat:

A. <i>Modified Mortar Bed</i>	A108.1B
-------------------------------	---------

This CAD detail and or specification are provided as a guide, they are intended to assist in the proper detailing or specifying of a project. They are not intended for construction. The guide specification must be reviewed for code compliance and edited to make it project specific. Drawings are based on: The Masonry Society (TMS) 402 & 602, National Concrete Masonry Association (NCMA) Manufactured Stone Veneer Installation Guide, ASTM C1780 - Standard Practice for Installation Methods for Adhered Manufactured Stone Masonry Veneer, Tile Council of North America's (TCNA) 2017 TCNA Handbook for Ceramic Tile Installation and the Terrazzo, Tile and Marble Association of Canada's (TTMAC) Tile Installation Manual. Please refer to the referenced handbooks and current data sheets for complete instructions and application limitations. Some installation methods and component materials are not referenced. MAPEI encourages the user to consult all approved resources to ensure a complete assembly.



MAPEI Corporation
1144 E. Newport Center Drive
Deerfield Beach, FL 33442
Phone: 1-800-992-6273

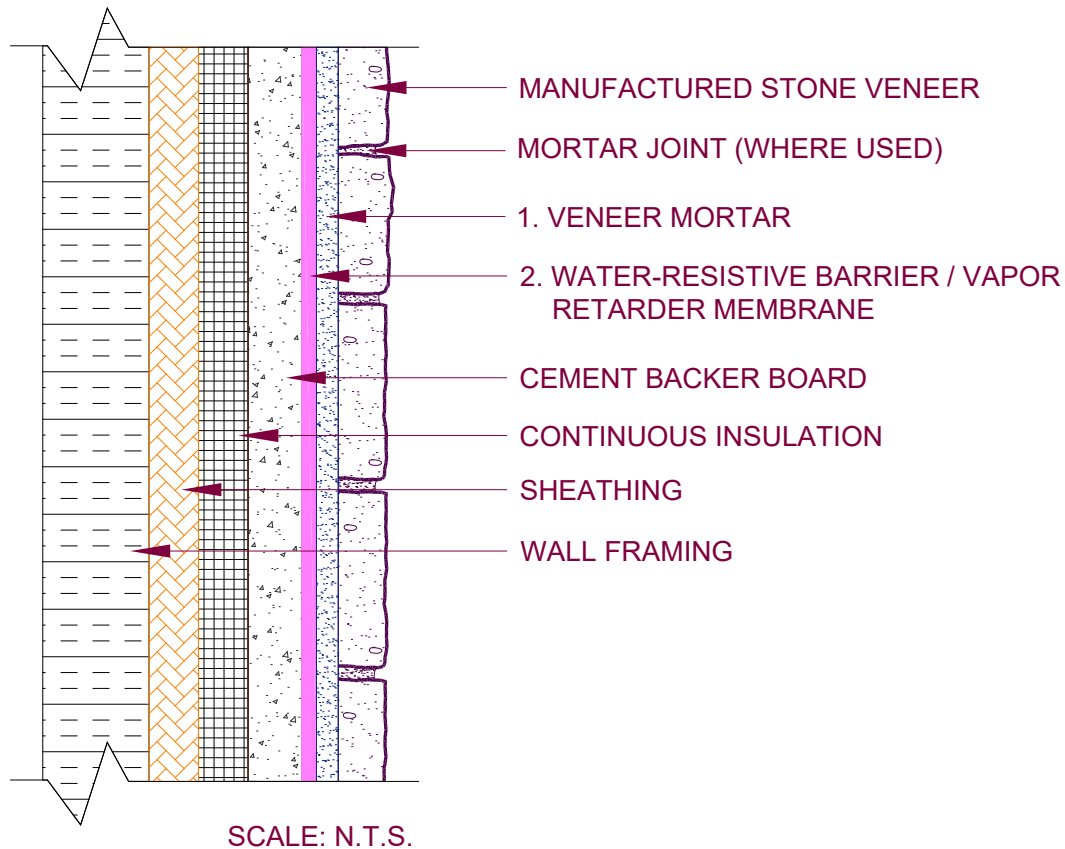


EXTERIOR WALLS

Sheathing/Cement Backer Board
Continuous Insulation
Water Resistive Barrier
Manufactured Stone Veneer

02.19.25

MAPEI: MSV-Figure-4b-CBE



MAPEI Products Assembly

ANSI

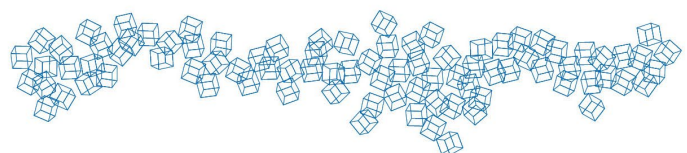
1. Veneer Mortar Options:

A. <i>Granirapid</i> ® System	A118.4F, A118.15F
B. <i>Mapebond</i> ® VM Lite	A118.4ET, A118.15ET
C. <i>Mapebond</i> ® VM Rapid	A118.4FT, A118.15FT
D. <i>Mapebond</i> ® VM Super	A118.4ET, A118.15ET
E. <i>Mapebond</i> ® VM	A118.4ET

2. Water-resistive Barrier / Vapor Retarder Membrane Options:

A. <i>Mapelastic</i> ® WP	A118.10
B. <i>Mapelastic</i> ® WRB	

This CAD detail and or specification are provided as a guide, they are intended to assist in the proper detailing or specifying of a project. They are not intended for construction. The guide specification must be reviewed for code compliance and edited to make it project specific. Drawings are based on: The Masonry Society (TMS) 402 & 602, National Concrete Masonry Association (NCMA) Manufactured Stone Veneer Installation Guide, ASTM C1780 - Standard Practice for Installation Methods for Adhered Manufactured Stone Masonry Veneer, Tile Council of North America's (TCNA) 2017 TCNA Handbook for Ceramic Tile Installation and the Terrazzo, Tile and Marble Association of Canada's (TTMAC) Tile Installation Manual. Please refer to the referenced handbooks and current data sheets for complete instructions and application limitations. Some installation methods and component materials are not referenced. MAPEI encourages the user to consult all approved resources to ensure a complete assembly.

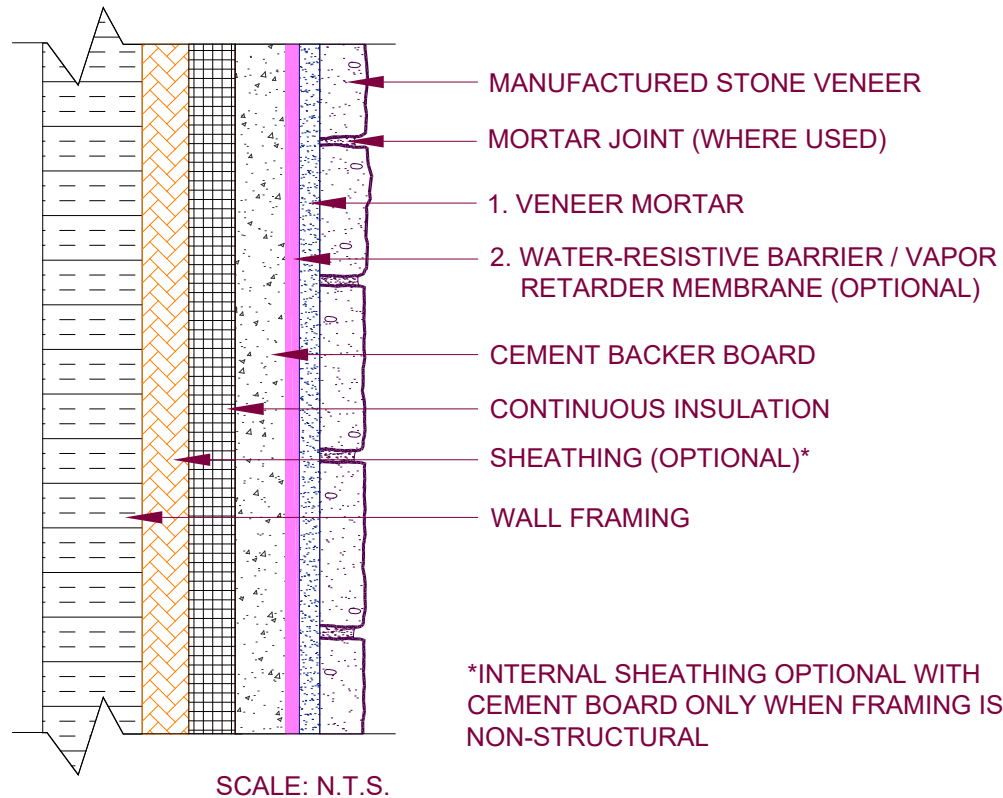


INTERIOR WALLS

Sheathing (Optional)/Cement Backer Board
Continuous Insulation
Water Resistive Barrier (Optional)
Manufactured Stone Veneer

02.19.25

MAPEI: MSV-Figure-4b-CBI



MAPEI Products Assembly

ANSI

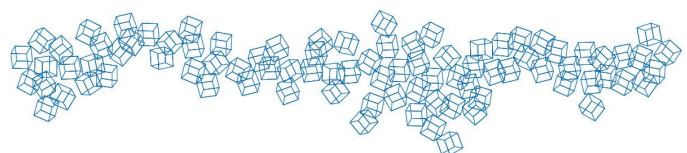
1. Veneer Mortar Options:

A. <i>Granirapid</i> ® System	A118.4F, A118.15F
B. <i>Mapebond</i> ® VM Lite	A118.4ET, A118.15ET
C. <i>Mapebond</i> ® VM Rapid	A118.4FT, A118.15FT
D. <i>Mapebond</i> ® VM Super	A118.4ET, A118.15ET
E. <i>Mapebond</i> ® VM	A118.4ET

2. Water-resistive Barrier / Vapor Retarder Membrane Options:

A. <i>Mapelastic</i> ® WP	A118.10
B. <i>Mapelastic</i> ® WRB	

This CAD detail and or specification are provided as a guide, they are intended to assist in the proper detailing or specifying of a project. They are not intended for construction. The guide specification must be reviewed for code compliance and edited to make it project specific. Drawings are based on: The Masonry Society (TMS) 402 & 602, National Concrete Masonry Association (NCMA) Manufactured Stone Veneer Installation Guide, ASTM C1780 - Standard Practice for Installation Methods for Adhered Manufactured Stone Masonry Veneer, Tile Council of North America's (TCNA) 2017 TCNA Handbook for Ceramic Tile Installation and the Terrazzo, Tile and Marble Association of Canada's (TTMAC) Tile Installation Manual. Please refer to the referenced handbooks and current data sheets for complete instructions and application limitations. Some installation methods and component materials are not referenced. MAPEI encourages the user to consult all approved resources to ensure a complete assembly.

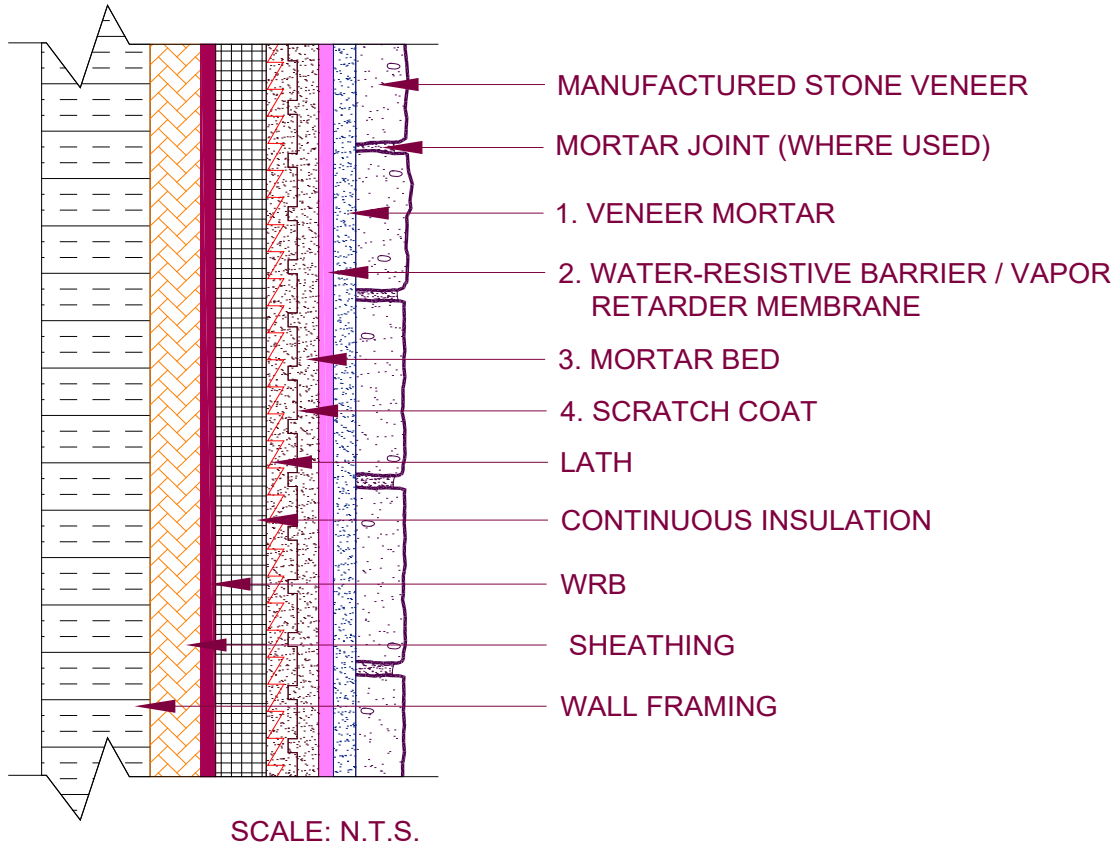


EXTERIOR WALLS

Sheathing/Mortar Bed
Continuous Insulation
Water Resistive Barrier
Manufactured Stone Veneer

02.19.25

MAPEI: MSV-Figure-4b-MBE



MAPEI Products Assembly

ANSI

1. Veneer Mortar Options:

A. <i>Granirapid</i> ® System	A118.4F, A118.15F
B. <i>Mapebond</i> ® VM Lite	A118.4ET, A118.15ET
C. <i>Mapebond</i> ® VM Rapid	A118.4FT, A118.15FT
D. <i>Mapebond</i> ® VM Super	A118.4ET, A118.15ET
E. <i>Mapebond</i> ® VM	A118.4ET

2. Water-resistive Barrier / Vapor Retarder Membrane Options:

A. <i>Mapelastic</i> ® WP	A118.10
B. <i>Mapelastic</i> ® WRB	

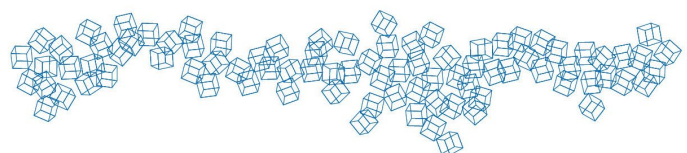
3. Mortar Bed:

A. <i>Modified Mortar Bed</i>	A108.1B
-------------------------------	---------

4. Scratch Coat:

A. <i>Modified Mortar Bed</i>	A108.1B
-------------------------------	---------

This CAD detail and or specification are provided as a guide, they are intended to assist in the proper detailing or specifying of a project. They are not intended for construction. The guide specification must be reviewed for code compliance and edited to make it project specific. Drawings are based on: The Masonry Society (TMS) 402 & 602, National Concrete Masonry Association (NCMA) Manufactured Stone Veneer Installation Guide, ASTM C1780 - Standard Practice for Installation Methods for Adhered Manufactured Stone Masonry Veneer, Tile Council of North America's (TCNA) 2017 TCNA Handbook for Ceramic Tile Installation and the Terrazzo, Tile and Marble Association of Canada's (TTMAC) Tile Installation Manual. Please refer to the referenced handbooks and current data sheets for complete instructions and application limitations. Some installation methods and component materials are not referenced. MAPEI encourages the user to consult all approved resources to ensure a complete assembly.

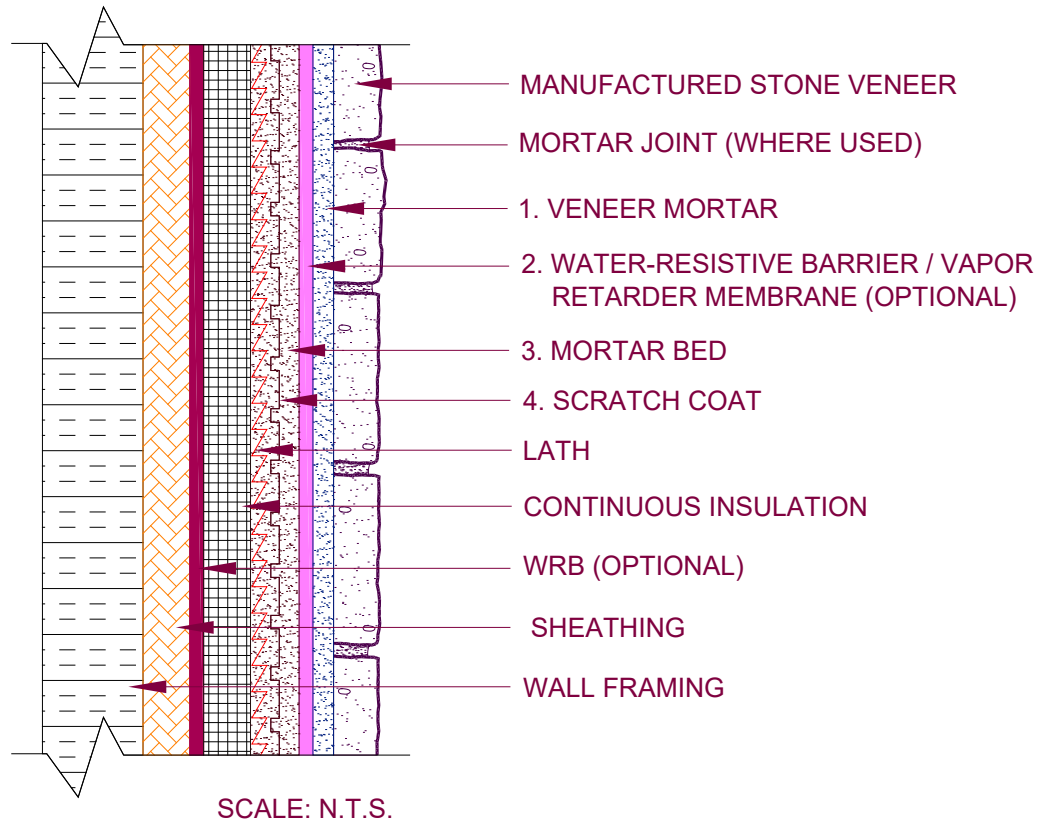


INTERIOR WALLS

Sheathing/Mortar Bed
 Continuous Insulation
 Water Resistive Barrier (Optional)
 Manufactured Stone Veneer

02.19.25

MAPEI: MSV-Figure-4b-MBI

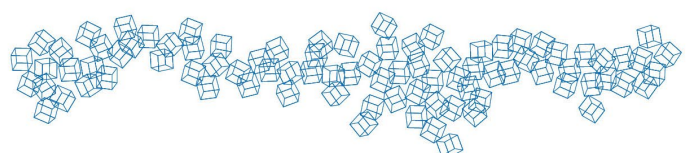


MAPEI Products Assembly	ANSI
1. Veneer Mortar Options:	
A. <i>Granirapid</i> ® System	A118.4F, A118.15F
B. <i>Mapebond</i> ® VM Lite	A118.4ET, A118.15ET
C. <i>Mapebond</i> ® VM Rapid	A118.4FT, A118.15FT
D. <i>Mapebond</i> ® VM Super	A118.4ET, A118.15ET
E. <i>Mapebond</i> ® VM	A118.4ET
2. Water-resistive Barrier / Vapor Retarder Membrane Options:	
A. <i>Mapelastic</i> ® WP	A118.10
B. <i>Mapelastic</i> ® WRB	
3. Mortar Bed:	
A. <i>Modified Mortar Bed</i>	A108.1B
4. Scratch Coat:	
A. <i>Modified Mortar Bed</i>	A108.1B

This CAD detail and or specification are provided as a guide, they are intended to assist in the proper detailing or specifying of a project. They are not intended for construction. The guide specification must be reviewed for code compliance and edited to make it project specific. Drawings are based on: The Masonry Society (TMS) 402 & 602, National Concrete Masonry Association (NCMA) Manufactured Stone Veneer Installation Guide, ASTM C1780 - Standard Practice for Installation Methods for Adhered Manufactured Stone Masonry Veneer, Tile Council of North America's (TCNA) 2017 TCNA Handbook for Ceramic Tile Installation and the Terrazzo, Tile and Marble Association of Canada's (TTMAC) Tile Installation Manual. Please refer to the referenced handbooks and current data sheets for complete instructions and application limitations. Some installation methods and component materials are not referenced. MAPEI encourages the user to consult all approved resources to ensure a complete assembly.



MAPEI Corporation
 1144 E. Newport Center Drive
 Deerfield Beach, FL 33442
 Phone: 1-800-992-6273

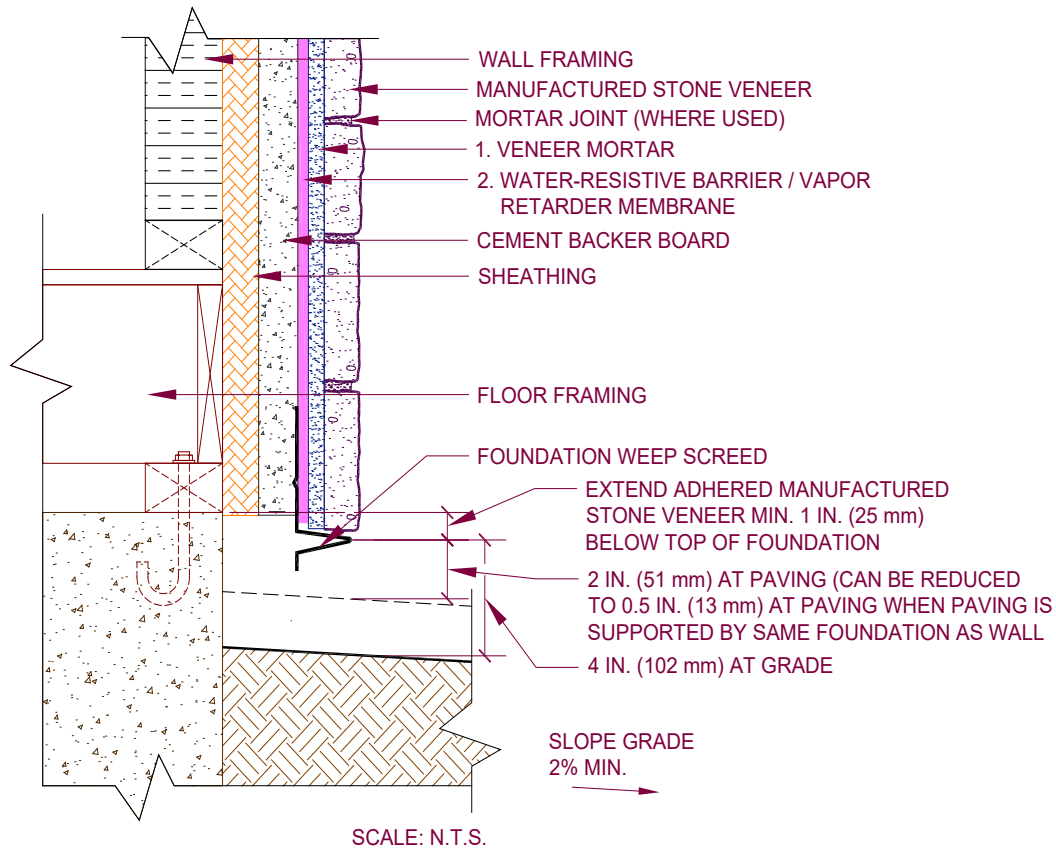


EXTERIOR WALLS

Sheathing/Cement Backer Board
 Water Resistant Barrier
 Manufactured Stone Veneer

02.20.25

MAPEI: MSV-Figure-5a-CB-
 Foundation Wall Base



MAPEI Products Assembly

ANSI

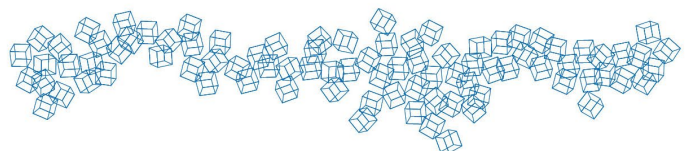
1. Veneer Mortar Options:

A. <i>Granirapid</i> ® System	A118.4F, A118.15F
B. <i>Mapebond</i> ® VM Lite	A118.4ET, A118.15ET
C. <i>Mapebond</i> ® VM Rapid	A118.4FT, A118.15FT
D. <i>Mapebond</i> ® VM Super	A118.4ET, A118.15ET
E. <i>Mapebond</i> ® VM	A118.4ET

2. Water-resistive Barrier / Vapor Retarder Membrane Options:

A. <i>Mapelastic</i> ® WP	A118.10
B. <i>Mapelastic</i> ® WRB	

This CAD detail and or specification are provided as a guide, they are intended to assist in the proper detailing or specifying of a project. They are not intended for construction. The guide specification must be reviewed for code compliance and edited to make it project specific. Drawings are based on: The Masonry Society (TMS) 402 & 602, National Concrete Masonry Association (NCMA) Manufactured Stone Veneer Installation Guide, ASTM C1780 - Standard Practice for Installation Methods for Adhered Manufactured Stone Masonry Veneer, Tile Council of North America's (TCNA) 2017 TCNA Handbook for Ceramic Tile Installation and the Terrazzo, Tile and Marble Association of Canada's (TTMAC) Tile Installation Manual. Please refer to the referenced handbooks and current data sheets for complete instructions and application limitations. Some installation methods and component materials are not referenced. MAPEI encourages the user to consult all approved resources to ensure a complete assembly.

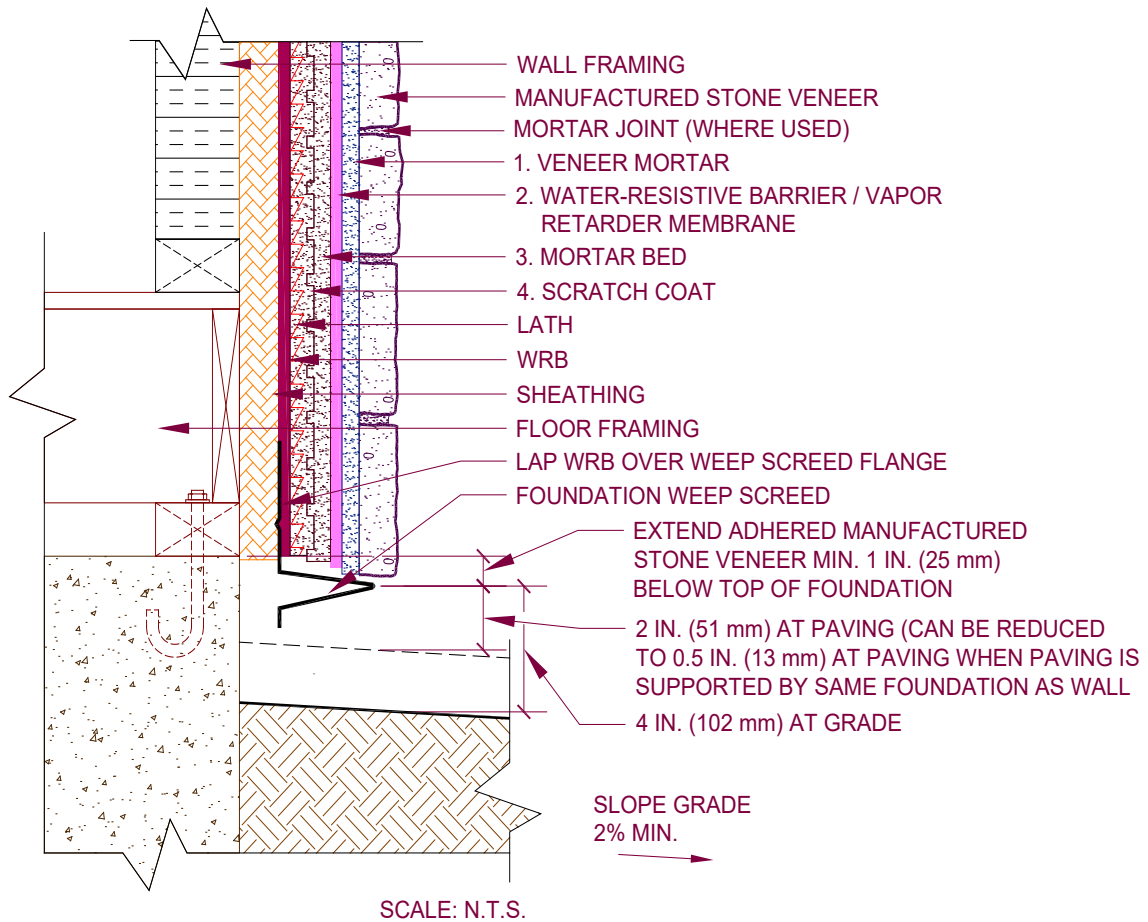


EXTERIOR WALLS

Sheathing/Mortar Bed
Water Resistive Barrier
Manufactured Stone Veneer

02.20.25

MAPEI: MSV-Figure-5a-MB-
Foundation Wall Base



MAPEI Products Assembly

ANSI

1. Veneer Mortar Options:

A. <i>Granirapid</i> ® System	A118.4F, A118.15F
B. <i>Mapebond</i> ® VM Lite	A118.4ET, A118.15ET
C. <i>Mapebond</i> ® VM Rapid	A118.4FT, A118.15FT
D. <i>Mapebond</i> ® VM Super	A118.4ET, A118.15ET
E. <i>Mapebond</i> ® VM	A118.4ET

2. Water-resistive Barrier / Vapor Retarder Membrane Options:

A. <i>Mapelastic</i> ® WP	A118.10
B. <i>Mapelastic</i> ® WRB	

3. Mortar Bed:

A. <i>Modified Mortar Bed</i>	A108.1B
-------------------------------	---------

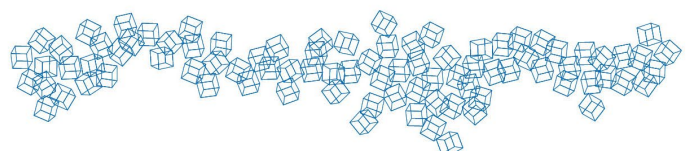
4. Scratch Coat:

A. <i>Modified Mortar Bed</i>	A108.1B
-------------------------------	---------

This CAD detail and or specification are provided as a guide, they are intended to assist in the proper detailing or specifying of a project. They are not intended for construction. The guide specification must be reviewed for code compliance and edited to make it project specific. Drawings are based on: The Masonry Society (TMS) 402 & 602, National Concrete Masonry Association (NCMA) Manufactured Stone Veneer Installation Guide, ASTM C1780 - Standard Practice for Installation Methods for Adhered Manufactured Stone Masonry Veneer, Tile Council of North America's (TCNA) 2017 TCNA Handbook for Ceramic Tile Installation and the Terrazzo, Tile and Marble Association of Canada's (TTMAC) Tile Installation Manual. Please refer to the referenced handbooks and current data sheets for complete instructions and application limitations. Some installation methods and component materials are not referenced. MAPEI encourages the user to consult all approved resources to ensure a complete assembly.



MAPEI Corporation
1144 E. Newport Center Drive
Deerfield Beach, FL 33442
Phone: 1-800-992-6273

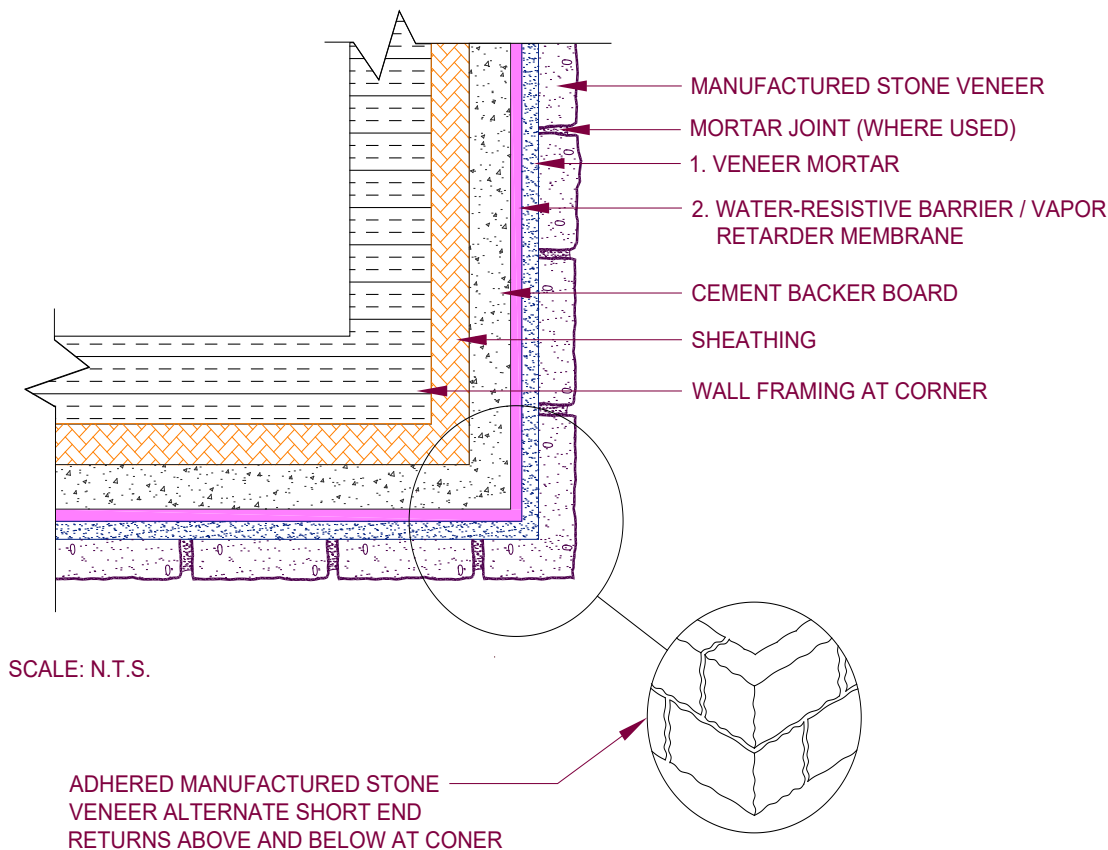


EXTERIOR WALLS

Sheathing/Cement Backer Board
Water Resistant Barrier
Manufactured Stone Veneer

02.20.25

MAPEI: MSV-Figure-9a-CB-
Outside Corner



MAPEI Products Assembly

ANSI

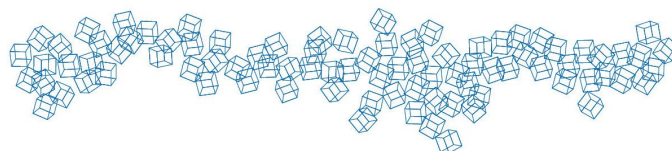
1. Veneer Mortar Options:

A. <i>Granirapid</i> ® System	A118.4F, A118.15F
B. <i>Mapebond</i> ® VM Lite	A118.4ET, A118.15ET
C. <i>Mapebond</i> ® VM Rapid	A118.4FT, A118.15FT
D. <i>Mapebond</i> ® VM Super	A118.4ET, A118.15ET
E. <i>Mapebond</i> ® VM	A118.4ET

2. Water-resistive Barrier / Vapor Retarder Membrane Options:

A. <i>Mapelastic</i> ® WP	A118.10
B. <i>Mapelastic</i> ® WRB	

This CAD detail and or specification are provided as a guide, they are intended to assist in the proper detailing or specifying of a project. They are not intended for construction. The guide specification must be reviewed for code compliance and edited to make it project specific. Drawings are based on: The Masonry Society (TMS) 402 & 602, National Concrete Masonry Association (NCMA) Manufactured Stone Veneer Installation Guide, ASTM C1780 - Standard Practice for Installation Methods for Adhered Manufactured Stone Masonry Veneer, Tile Council of North America's (TCNA) 2017 TCNA Handbook for Ceramic Tile Installation and the Terrazzo, Tile and Marble Association of Canada's (TTMAC) Tile Installation Manual. Please refer to the referenced handbooks and current data sheets for complete instructions and application limitations. Some installation methods and component materials are not referenced. MAPEI encourages the user to consult all approved resources to ensure a complete assembly.

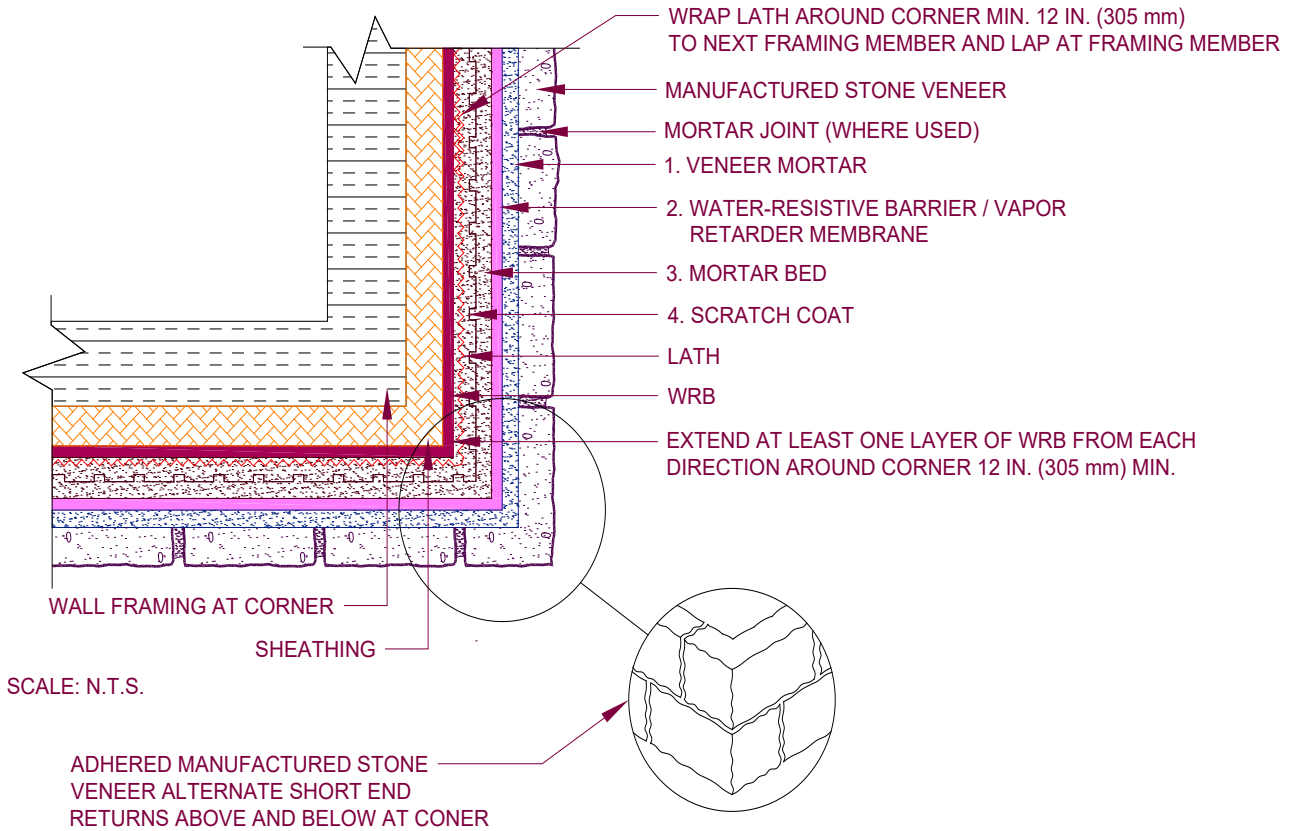


EXTERIOR WALLS

Sheathing/Mortar Bed
Water Resistant Barrier
Manufactured Stone Veneer

02.20.25

MAPEI: MSV-Figure-5a-MB-
Foundation Wall Base



MAPEI Products Assembly

ANSI

1. Veneer Mortar Options:

A. <i>Granirapid</i> ® System	A118.4F, A118.15F
B. <i>Mapebond</i> ® VM Lite	A118.4ET, A118.15ET
C. <i>Mapebond</i> ® VM Rapid	A118.4FT, A118.15FT
D. <i>Mapebond</i> ® VM Super	A118.4ET, A118.15ET
E. <i>Mapebond</i> ® VM	A118.4ET

2. Water-resistive Barrier / Vapor Retarder Membrane Options:

A. <i>Mapelastic</i> ® WP	A118.10
B. <i>Mapelastic</i> ® WRB	

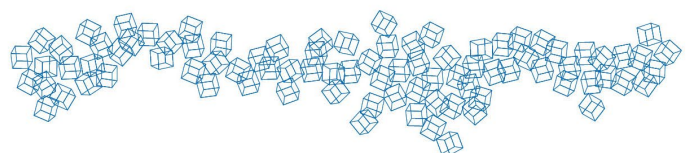
3. Mortar Bed:

A. <i>Modified Mortar Bed</i>	A108.1B
-------------------------------	---------

4. Scratch Coat:

A. <i>Modified Mortar Bed</i>	A108.1B
-------------------------------	---------

This CAD detail and or specification are provided as a guide, they are intended to assist in the proper detailing or specifying of a project. They are not intended for construction. The guide specification must be reviewed for code compliance and edited to make it project specific. Drawings are based on: The Masonry Society (TMS) 402 & 602, National Concrete Masonry Association (NCMA) Manufactured Stone Veneer Installation Guide, ASTM C1780 - Standard Practice for Installation Methods for Adhered Manufactured Stone Masonry Veneer, Tile Council of North America's (TCNA) 2017 TCNA Handbook for Ceramic Tile Installation and the Terrazzo, Tile and Marble Association of Canada's (TTMAC) Tile Installation Manual. Please refer to the referenced handbooks and current data sheets for complete instructions and application limitations. Some installation methods and component materials are not referenced. MAPEI encourages the user to consult all approved resources to ensure a complete assembly.

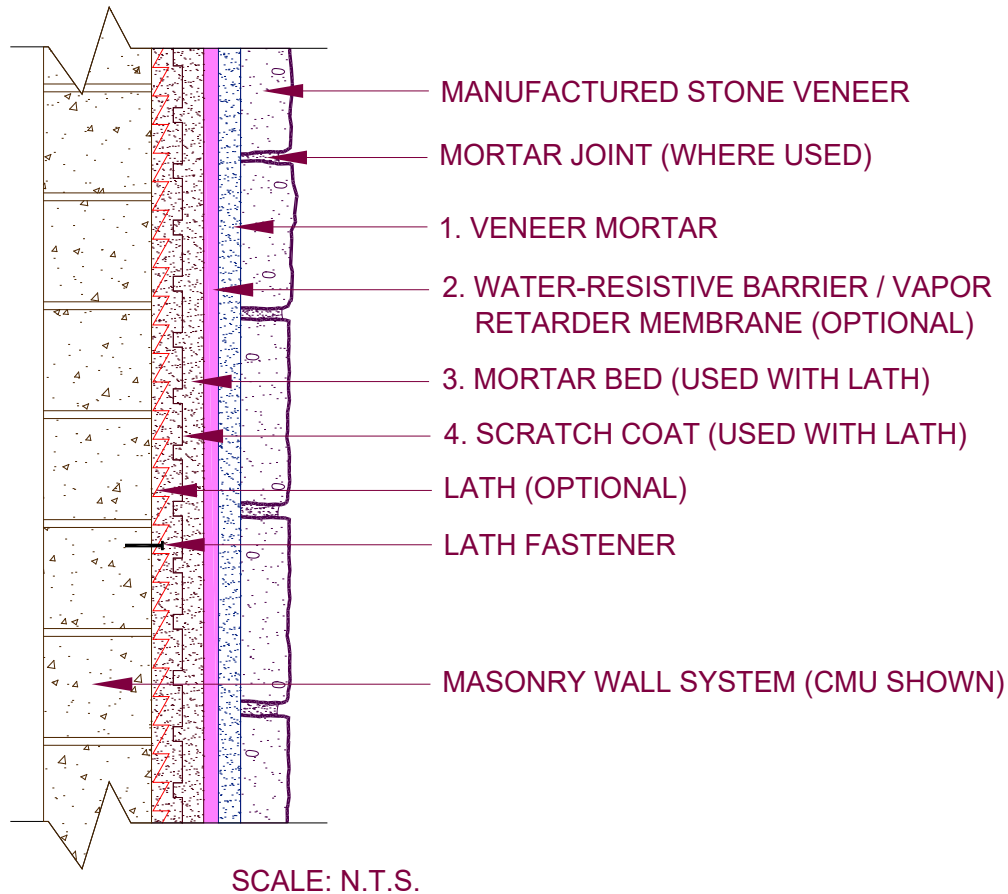


EXTERIOR WALLS

02.20.25

Sheathing/Mortar Bed
 Water Resistive Barrier (Optional)
 Masonry Wall System
 Manufactured Stone Veneer

MAPEI: MSV-Figure-46a-MBE



MAPEI Products Assembly

ANSI

1. Veneer Mortar Options:

A. <i>Granirapid</i> ® System	A118.4F, A118.15F
B. <i>Mapebond</i> ® VM Lite	A118.4ET, A118.15ET
C. <i>Mapebond</i> ® VM Rapid	A118.4FT, A118.15FT
D. <i>Mapebond</i> ® VM Super	A118.4ET, A118.15ET
E. <i>Mapebond</i> ® VM	A118.4ET

2. Water-resistive Barrier / Vapor Retarder Membrane Options:

A. <i>Mapelastic</i> ® WP	A118.10
B. <i>Mapelastic</i> ® WRB	

3. Mortar Bed:

A. <i>Modified Mortar Bed</i>	A108.1B
-------------------------------	---------

4. Scratch Coat:

A. <i>Modified Mortar Bed</i>	A108.1B
-------------------------------	---------

This CAD detail and or specification are provided as a guide, they are intended to assist in the proper detailing or specifying of a project. They are not intended for construction. The guide specification must be reviewed for code compliance and edited to make it project specific. Drawings are based on: The Masonry Society (TMS) 402 & 602, National Concrete Masonry Association (NCMA) Manufactured Stone Veneer Installation Guide, ASTM C1780 - Standard Practice for Installation Methods for Adhered Manufactured Stone Masonry Veneer, Tile Council of North America's (TCNA) 2017 TCNA Handbook for Ceramic Tile Installation and the Terrazzo, Tile and Marble Association of Canada's (TTMAC) Tile Installation Manual. Please refer to the referenced handbooks and current data sheets for complete instructions and application limitations. Some installation methods and component materials are not referenced. MAPEI encourages the user to consult all approved resources to ensure a complete assembly.

