

Residential **single-source** building **solutions**



Living rooms



Kitchens



Bathrooms



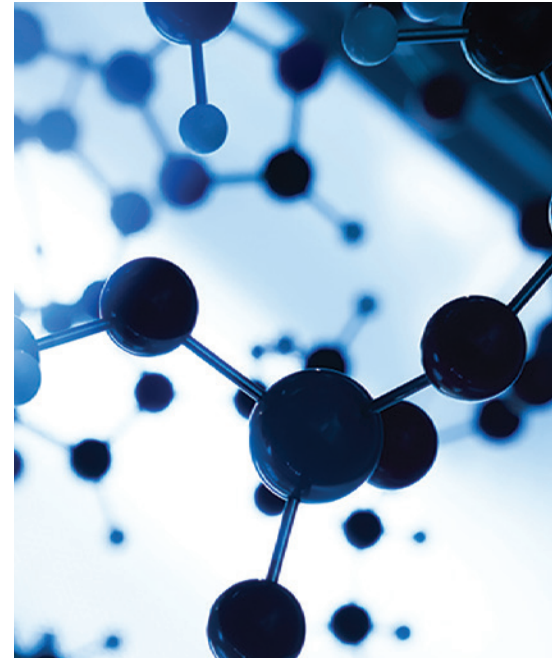
Outdoor patios

INNOVATIVE RESEARCH AND DEVELOPMENT

Worldwide, more than 12% of MAPEI employees are involved in the development of new technologies and product innovations. We've taken the additional initiative of focusing our R&D efforts on environmentally sustainable solutions.

To remain on the cutting edge of innovation, MAPEI reinvests 5% of its annual revenues into researching and developing new products and technologies. This corporate priority has produced such innovations as:

- **Easy Glide Technology™**, which offers extreme ease of application, yielding a buttery consistency that reduces fatigue during installation.
- **Ultrabond ECO®** product formulations, beginning in the 1980s, that feature extremely low emissions of volatile organic compounds (VOCs) for improved indoor air quality.
- **FastTrack Ready™** products, which reduce the required steps of an installation and/or perform more quickly than current methods.



QUALITY ASSURANCE, EFFICIENT MANUFACTURING, SAFETY AND PROTECTION OF THE ENVIRONMENT

In North America, almost all MAPEI facilities have been certified to be in conformance with requirements in the ISO 9001 Quality Management Systems and the ISO 14001 Environmental Management Systems Standards. We are in the process of certifying our sites to conform with the ISO 45001 Occupational Health and Safety Management Systems Standard. Our products are manufactured according to established requirements, in strict adherence to process and procedural guidelines, with documented evidence of conformity. This rigid production format is vigilantly followed to ensure that every product is manufactured uniformly from batch to batch.

These production efforts are reflected through optimization of logistics costs, proximity to our customers, and a guarantee of maximum efficiency of our production processes, while respecting the environment and ensuring safe working conditions for our employees.



WARRANTY PROGRAM

MAPEI complements the industry's best products with simple, easy-to-understand requirements for comprehensive warranties – allowing you to build systems within desired warranty timeframes.

MAPEI's advanced systems give you the built-in confidence provided by superior in-field technical support and the **Best-Backed™ warranties** in the industry.



PROFESSIONAL SUPPORT

Knowledgeable sales force

MAPEI offers the largest, most highly trained sales force within the industry to serve your needs for product application/installation recommendations. Its representatives are focused on supporting you with product knowledge, product demonstrations, product information, marketing support materials and other relevant tools to help you generate business.

Technical expertise

An in-house Technical Services product support team responds to customers' telephone and email inquiries with answers to installation challenges in real time. In addition, regional Technical Services representatives provide field support, including jobsite visits, product training and advice on product selection.

Call Technical Services at:

1-800-992-6273

(flooring, U.S. and Puerto Rico)

1-888-365-0614

(non-flooring, U.S. and Puerto Rico)

1-800-361-9309

(Canada)



Customer Service Plus

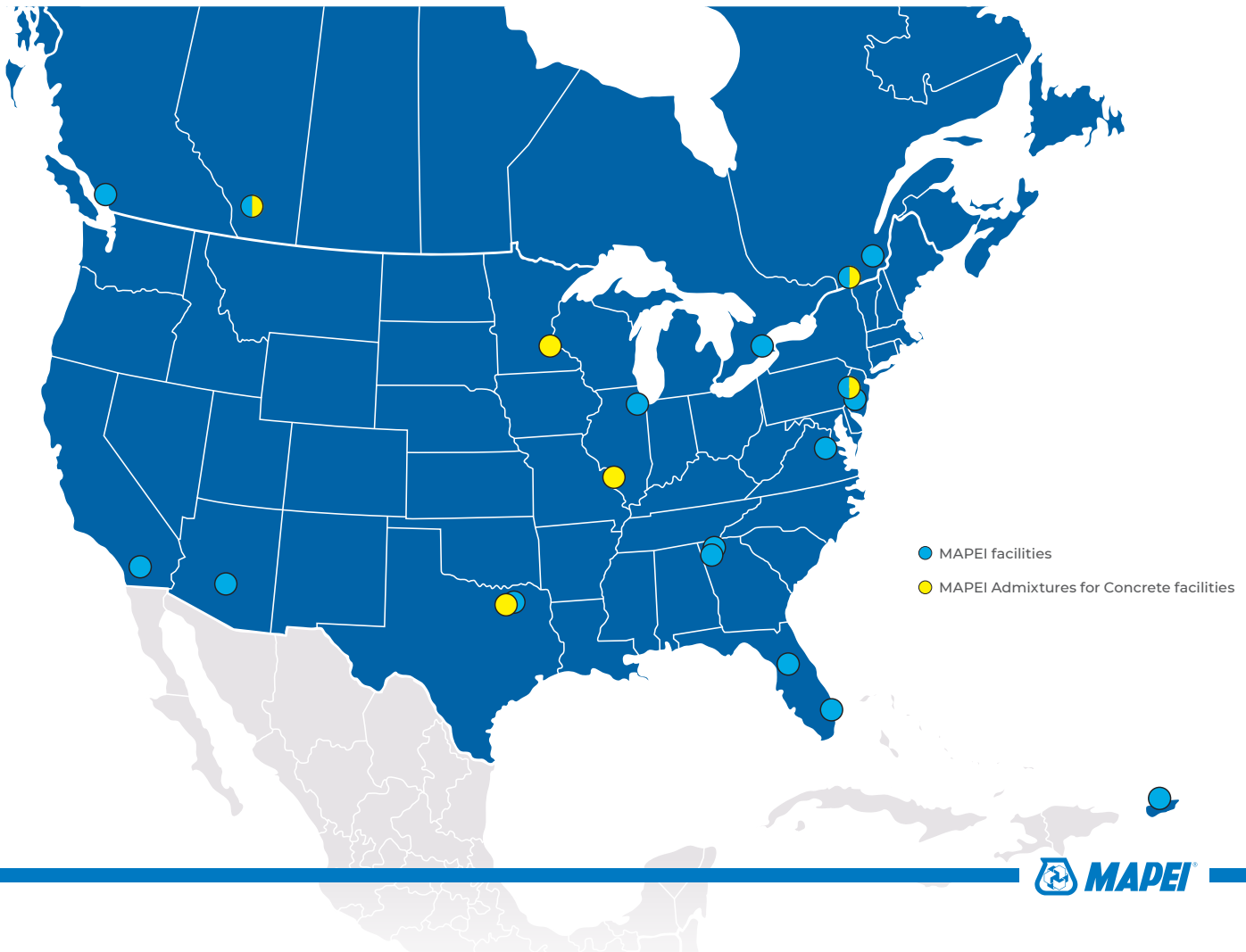
MAPEI's standards for customer service are best-in-class. Our leadership includes such service innovations as:

- Customer-friendly, efficient processes.
- One-call resolution.
- Employee commitment to effective customer dialog.

Call Customer Service at:

1-800-42-MAPEI (1-800-426-2734)

FACILITIES IN THE USA, CANADA AND CARIBBEAN



PRODUCTS



PATCHING COMPOUNDS AND SKIMCOATS

Planiprep® PSC

Moisture-resistant, fast-drying patch and skimcoating compound

Planiprep SC

High-performance, fiber-reinforced skimcoating compound

Planipatch®

Fast-setting, polymer-modified, cement-based patching compound

Mapecem® Quickpatch

High-performance concrete patch

MUD BEDS, RENDER MORTARS AND SCREEDS

4 to 1™ Mud Bed Mix

Sand and cement mortar mix

Modified Mortar Bed

Polymer-modified thick-bed and render mortar

Planitop® 330 Fast

Quick-setting, fiber-reinforced, cementitious rendering mortar

Planislope™ RS

Rapid-setting, polymer-modified sloping mortar

SELF-LEVELERS

Novoplan® 2 Plus

Professional, self-leveling underlayment

Novoplan Easy Plus

Easy-preparation, self-leveling underlayment

Novoplan HFL

High-flow, self-leveling compound

PRIMERS FOR SELF-LEVELING

Primer L™

Advanced-technology, acrylic latex primer for concrete

Primer T™

All-purpose primer for self-leveling underlayments

Primer X™

Fast-drying, textured primer for nonporous substrates

MOISTURE CONTROL

Planiseal® MSP

Moisture-control membrane, adhesive isolator, sealer, pH blocker and primer

Planiseal PMB

One-component, polyurethane moisture barrier and bonding agent

WATERPROOFING MEMBRANES

Mapelastic® AquaDefense

Premium waterproofing and crack-isolation membrane

Mapelastic Turbo

Premium, rapid-drying, waterproofing and crack-isolation membrane

Mapeguard® WP 200

Waterproofing sheet membrane for ceramic tile and stone

CRACK-ISOLATION AND UNDERLAYMENT MEMBRANES

Mapelastic CI

Professional, roller-applied crack-isolation membrane

Mapeguard CI

Peel-and-stick, crack-isolation sheet membrane for tile installations

MAPEI SM Primer™

Water-based primer for MAPEI peel-and-stick membranes

Mapeguard UM

Underlayment membrane for ceramic tile and stone

Mapeguard ST

Waterproofing sealing tape

POLYMER-MODIFIED MORTARS

MAPEI Ultralite® Mortar

Premium, lightweight mortar with polymer for large and heavy tile

MAPEI Ultralite Mortar Pro

Professional, lightweight mortar with polymer for large and heavy tile

Keraflex™ Super

Premium, extra smooth, large-and-heavy-tile mortar with polymer

Keraflex Plus

Professional, extra smooth, large-and-heavy-tile mortar with polymer

Keraflex SG

Standard, extra smooth, large-and-heavy-tile mortar with polymer

Ultraflex® LFT™

Premium, large-and-heavy-tile mortar with polymer

Ultraflex LHT®

Professional, large-and-heavy-tile mortar with polymer

Ultraflex LHT SG

Standard, large-and-heavy-tile mortar with polymer

GROUTS

Ultracolor® Plus FA

Rapid-setting, "all-in-one" grout replacement for sanded and unsanded grouts

MAPEI Flexcolor® CQ

Ready-to-use grout with color-coated quartz

MAPEI Flexcolor 3D

Ready-to-use, translucent grout with an "iridescent effect" finish

Kerapoxy CQ

Premium epoxy grout and mortar with color-coated quartz

CAULKS

Mapesil® T

100%-silicone sealant for heavy traffic and movement joints

Mapesil T Plus

100%-silicone sealant with enhanced adhesion for heavy traffic and expansion/movement joints

Mapesil 3D

100%-silicone sealant for corner and change-of-plane joints

Keracaulk® S and Keracaulk U

Premium, sanded and unsanded, siliconized acrylic caulks

FLOOR-HEATING PRODUCTS

Mapeheat™ Membrane (rolls and sheet)

Lightweight uncoupling, crack-isolation and waterproofing membrane for electrical floor heating

Mapeheat Cable (120 V and 240 V)

Radiant-heating cable for use with Mapeheat Membrane

Mapeheat Mat

Pre-wired, floor-heating fabric

Mapeheat Thermo Connect

Programmable, WiFi floor-heating thermostat

RESILIENT-FLOORING ADHESIVES

Ultrabond ECO® 373

Universal, pressure-sensitive, multi-flooring adhesive

Ultrabond ECO 399

Heavy-duty, pressure-sensitive, multi-flooring adhesive

WOOD-FLOORING ADHESIVES

Ultrabond ECO 995

Premium moisture-control, sound-reduction and wood-flooring adhesive

Ultrabond ECO 985

Hybrid-polymer-based, moisture-control and sound-reducing wood-flooring adhesive

Ultrabond ECO® 980

Premium urethane adhesive for hardwood flooring

Ultrabond ECO 907

Fast-curing, silane-modified, polymer wood adhesive

SYSTEMS FOR FINISHING WOOD FLOORING

Ultracoat® Aqua Plus

Sawdust admixture for crack filling of wood flooring

Ultracoat sealers

One- and two-component sanding sealers

Ultracoat finishes

One- and two-component polyurethane wood-flooring finishes

CARE AND FINISHING PRODUCTS

UltraCare® Penetrating Plus SB Stone & Porcelain Tile Sealer

UltraCare Penetrating Plus Stone, Tile and Grout Sealer

UltraCare Penetrating SB Stone, Tile & Grout Sealer

TILE & STONE INSTALLATION PRODUCTS



Home office floor

- 1 Concrete
- 2 Primer
- 3 Crack-isolation membrane
- 4 Polymer-modified mortar
- 5 Tile/stone
- 6 Grout
- 7 Caulk
- 8 Sealer



Dining room floor

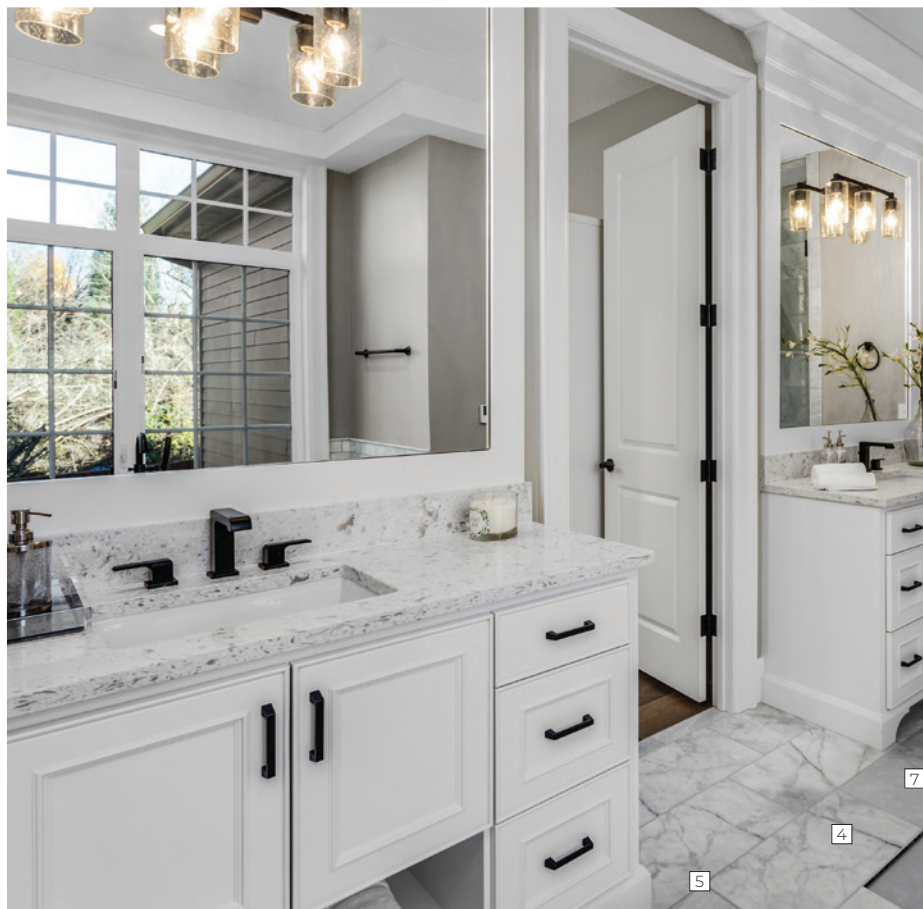
- 1 Concrete
- 2 Patch or skimcoat
- 3 Polymer-modified mortar
- 4 Tile/stone
- 5 Grout
- 6 Caulk
- 7 Sealer

TILE & STONE INSTALLATION PRODUCTS



Shower floor and wall

- 1A Concrete
- 1B Cement backer board
- 2 Mud beds
- 3 Polymer-modified mortar
- 4 Waterproofing membrane
- 5 Polymer-modified mortar
- 6 Tile/stone
- 7 Grout
- 8 Caulk
- 9 Sealer



Bathroom floor

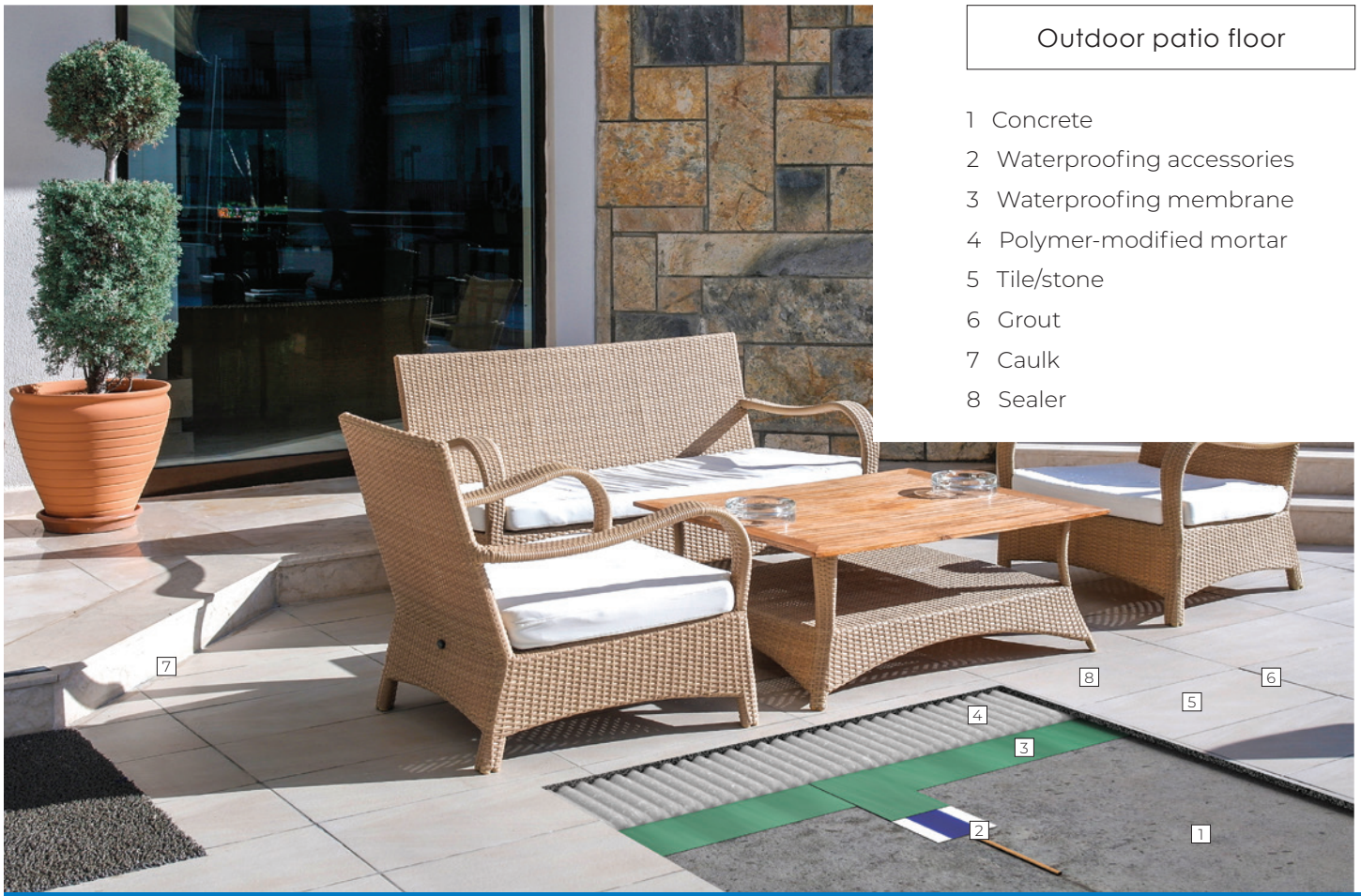
- 1 Concrete
- 2 Patch
- 3 Polymer-modified mortar
- 4 Large-format tile
- 5 Grout
- 6 Caulk
- 7 Sealer

TILE & STONE INSTALLATION PRODUCTS



Kitchen floor

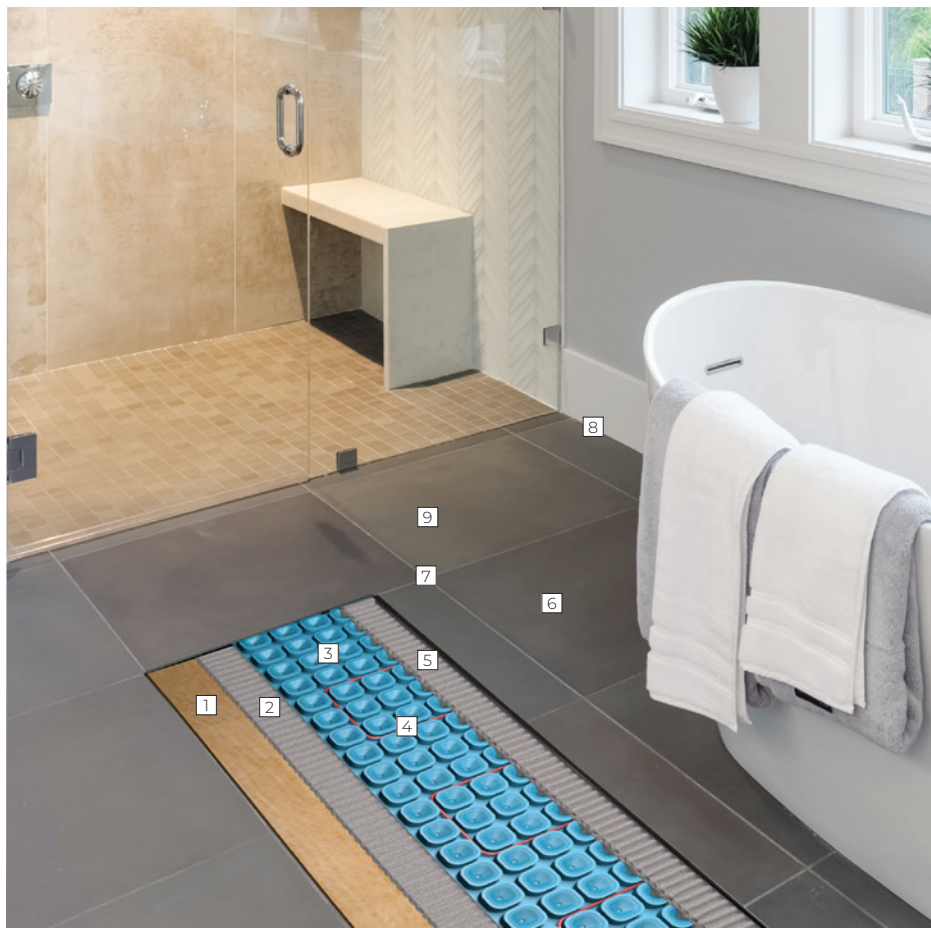
- 1 Concrete
- 2 Primer
- 3 Leveler
- 4 Polymer-modified mortar
- 5 Large-format tile
- 6 Grout
- 7 Caulk
- 8 Sealer



Outdoor patio floor

- 1 Concrete
- 2 Waterproofing accessories
- 3 Waterproofing membrane
- 4 Polymer-modified mortar
- 5 Tile/stone
- 6 Grout
- 7 Caulk
- 8 Sealer

FLOOR-HEATING SYSTEMS



Bathroom floor (membrane)

- 1 Plywood
- 2 Polymer-modified mortar
- 3 Floor-heating membrane
- 4 Cable
- 5 Polymer-modified mortar
- 6 Tile/stone
- 7 Grout
- 8 Caulk
- 9 Sealer



Bathroom floor (mat)

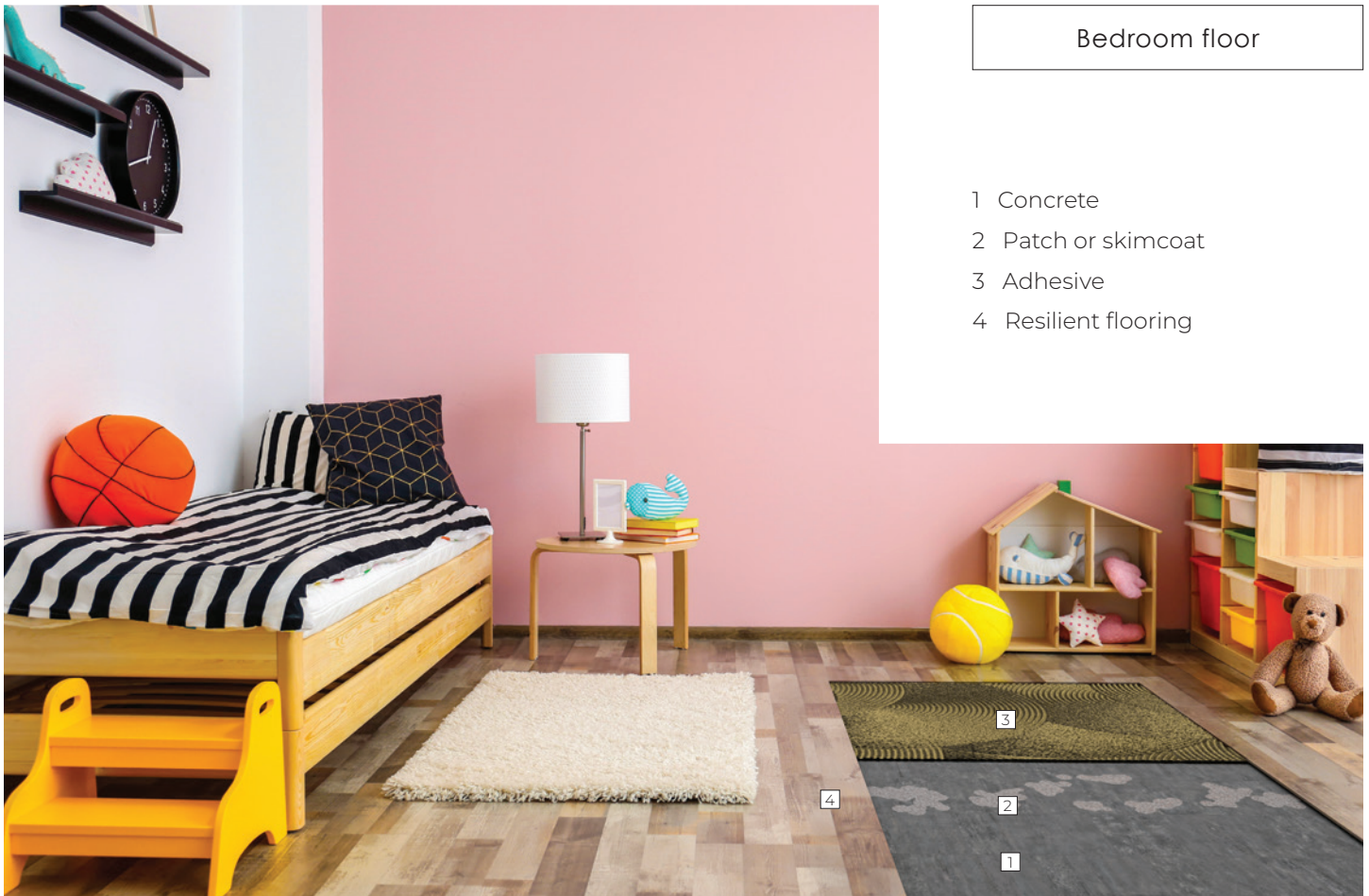
- 1 Concrete
- 2 Polymer-modified mortar
- 3 Floor-heating mat
- 4 Polymer-modified mortar
- 5 Tile/stone
- 6 Grout
- 7 Caulk
- 8 Sealer

RESILIENT FLOORING SYSTEMS



Kitchen floor

- 1 Concrete
- 2 Primer
- 3 Leveler
- 4 Adhesive
- 5 LVP
- 6 Grout
- 7 Caulk



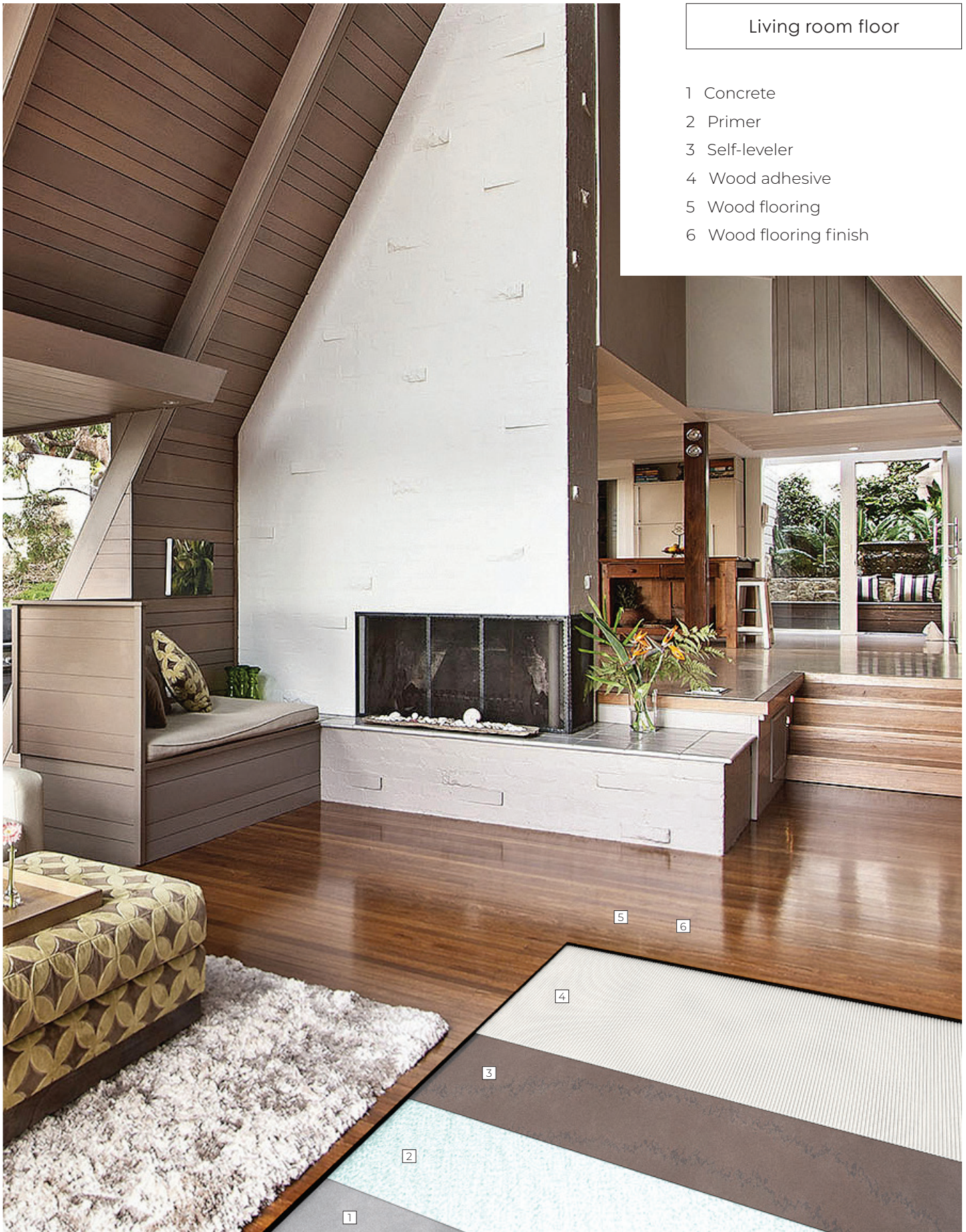
Bedroom floor

- 1 Concrete
- 2 Patch or skimcoat
- 3 Adhesive
- 4 Resilient flooring

WOOD-FLOORING INSTALLATION SYSTEMS

Living room floor

- 1 Concrete
- 2 Primer
- 3 Self-leveler
- 4 Wood adhesive
- 5 Wood flooring
- 6 Wood flooring finish





MAPEI Headquarters of North America

1144 East Newport Center Drive
Deerfield Beach, Florida 33442
1-888-US-MAPEI (1-888-876-2734) /
(954) 246-8888

Technical Services

1-800-992-6273 (U.S. and Puerto Rico)
1-800-361-9309 (Canada)

Customer Service

1-800-42-MAPEI (1-800-426-2734)

Services in Mexico

0-1-800-MX-MAPEI (0-1-800-696-2734)

Copyright ©2021 by MAPEI Corporation ("MAPEI") and all rights are reserved. All intellectual property rights and other information contained in this document are the exclusive property of MAPEI (or its parent or related companies), unless otherwise noted. No part of this document may be reproduced or transmitted in any form without the prior written consent of MAPEI.

Printed in the USA.

