

Ultratop®

NA

High-Performance, Self-Leveling Concrete Topping



DESCRIPTION

Ultratop [NA] is a self-leveling, self-curing, sealed or polished topping that is specially formulated for fast-track resurfacing of horizontal wear surfaces.

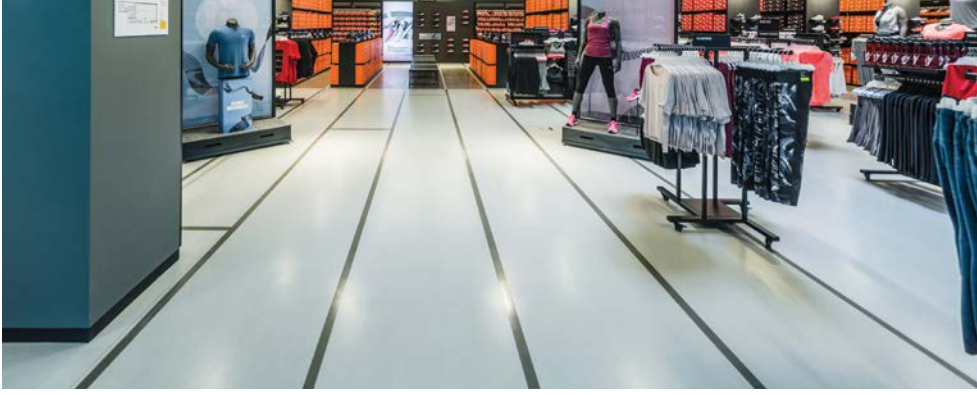
FEATURES AND BENEFITS

- Fluid self-leveler; easily installed from 1/4" to 2" neat
- Quickly hardens within 2 to 3 hours
- Polishable in as soon as 24 hours
- Ready to accept stains, sealers or coatings within 24 hours
- High compressive strength
- *Ultratop* [NA] can be extended with decorative terrazzo aggregate, resulting in unlimited finished appearances.
- Available in white and natural gray; can be also colored with liquid integral color
- For diamond-polishing guidelines, see the technical bulletin "Polishing *Ultratop*" in the Concrete Restoration Systems section of MAPEI's Website.



— MAPEI USA • MAPEI Caribe —





PRODUCT PERFORMANCE PROPERTIES

Laboratory Tests	Results
Flammability	Flame spread: 0 Fuel contribution: 0 Smoke development: 0
Compressive strength – ASTM C109 (CAN/CSA-A5) at 73°F and 50% relative humidity	
1 day	> 2,500 psi
7 days	> 4,400 psi
28 days	> 6,100 psi
Flexural strength – ASTM C348 (CAN/CSA-A23.2-8C)	
1 day	> 650 psi
7 days	> 1,280 psi
28 days	> 1,400 psi
VOCs (Rule #1168 of California's SCAQMD)	0 g per L

SHELF LIFE AND PRODUCT CHARACTERISTICS before mixing

Shelf life	9 months in an unopened, original bag in a dry, covered and well-ventilated place at 73°F
Physical state	Powder
Color	Natural gray; white

Protect containers from freezing in transit and storage. Provide for heated storage on site and deliver all materials at least 24 hours before work begins.

APPLICATION PROPERTIES

Mixing ratio	4.75 to 5 U.S. qts. of water per 50 lbs. of Ultratop [NA]
Density	128 lbs. per cu. ft.
Application temperature range	50°F to 90°F
Flowing time at 73°F	15 minutes
Final set at 73°F	2 to 3 hours
Time required before installation of stains, coatings or sealers	Typically 4 to 24 hours depending on the stain/coating/sealer, temperature and humidity

PACKAGING

Bag: Natural Gray, 50 lbs.

Bag: White, 50 lbs.

APPROXIMATE COVERAGE*

per 50-lb. bag

Yield	0.5 cu. ft.
Coverage at 1/4" thickness	24 sq. ft.
Coverage at 1/2" thickness	12 sq. ft.

* Coverage shown is for estimating purposes only. Actual jobsite coverage may vary according to substrate conditions and setting practices.

CSI DIVISION CLASSIFICATIONS

Concrete Topping	03 53 00
Cast-in-Place Concrete	03 30 00