



# **HOMEOWNERS GUIDE:** External Wall Insulation Systems

Section	Page
1. What is External Wall Insulation? .....	3
2. Why Choose External Wall Insulation? .....	4
3. Why Choose Mapei? .....	5
4. Insulation Options .....	6 - 7
5. Case Study - Berwick Upon Tweed .....	8 - 9
6. Case Study - Havering, London .....	10 - 11
7. Project Completion .....	12
8. What do I do next? .....	13
9. Funding & Grants .....	14
10. Energy Efficiency Certificate .....	15



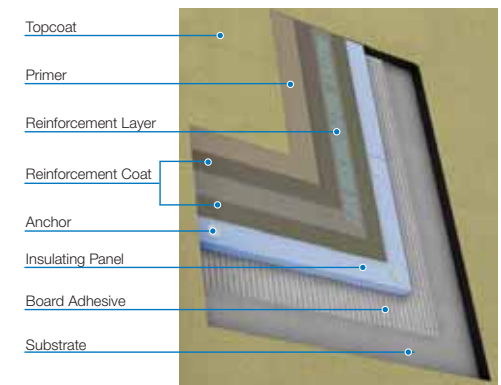
### What is External Wall Insulation (EWI)?

External Wall Insulation is a type of insulation that not only insulates, but also protects the exterior of your home.

Textured renders or brick slips are then applied to provide a decorative finish.

Essentially, it is like putting a big coat on your house!

### Typical EWI Build Up



### Six Good Reasons to Choose External Wall Insulation

1. Reduces heating costs by up to **40%**
2. Reduces maintenance costs
3. Improves the living environment:-
  - Warmer in Winter
  - Cool in Summer
4. Protects the building fabric and enhances the aesthetics
5. May increase the value of your property
6. Does not encroach on living space; you do not have to move out in order for the work to be carried out as it is all external!

Endorsed By:



4

### Why Us?

Mapei is a leading manufacturer of chemical & adhesive products for the construction industry, with over 80 years experience.

- Mapei has a UK based manufacturing plant
- We offer full technical support from project conception through to completion
- Tailored systems to meet your expectations and specific requirements
- Available in a wide range of finishes & insulation types for all kinds of properties
- Our systems are installed by a wide range of specialist contractors with nationwide coverage
- BBA certified systems for all types of construction conforming to European standards.
- Fully compliant with government legislation including **Ofgem, DECC, ECO, Green Deal & PAS2030.**



@MapeiUK

T: 0121 508 6970

E: [info@mapei.co.uk](mailto:info@mapei.co.uk)W: [www.mapei.co.uk](http://www.mapei.co.uk)

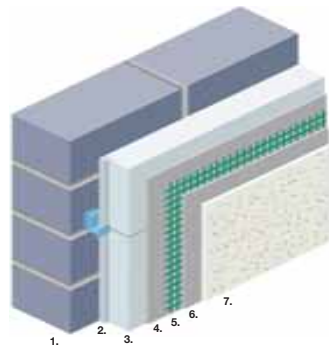
5

**System Build up Examples**

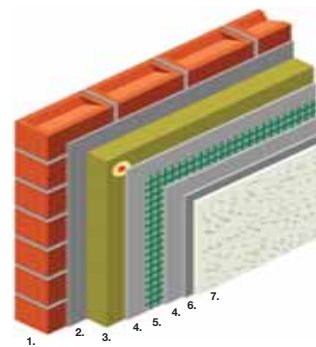
Different types of insulation are available depending on property type, but the 3 main options are:

- 1. Extruded Polystyrene Plus (EPS+)
- 2. Mineral Wall Insulation
- 3. Phenolic Insulation

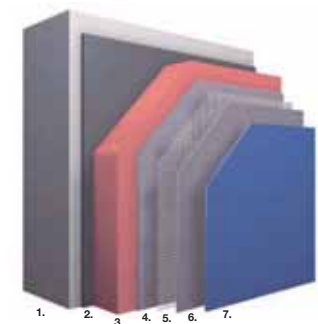
Please contact us to discuss which insulation option is best for your project.



- |   |                                  |
|---|----------------------------------|
| 1. Substrate                                | 5. Mapetherm Net                 |
| 2. Mapetherm AR1 GG Adhesive Coat           | 6. Silancolor Base-coat Primer   |
| 3. <b>EPS or EPS Plus insulation Panels</b> | 7. Silancolor Tonachino Silicone |
| 4. Mapetherm AR1 GG reinforcing coat        | Render                           |



- |   |                                      |
|---|--------------------------------------|
| 1. Substrate  | 4. Mapetherm AR1 GG Reinforcing coat |
| 2. Mapetherm AR1 GG Adhesive Coat   | 5. Mapetherm Net                     |
| 3. <b>Class O non-combustible fire classification on mineral fibre insulation panel</b> | 6. Silancolor Base-coat Primer       |
|   | 7. Silancolor Tonachino Silicone     |
|   | Render                               |



- |                               |                                  |
|-------------------------------|----------------------------------|
| 1. Substrate                  | 5. Mapetherm Net                 |
| 2. AR1 GG Adhesive Coat       | 6. Silancolor Base-coat Primer   |
| 3. <b>Phenolic Insulation</b> | 7. Silancolor Tonachino Silicone |
| 4. AR1 GG reinforcing coat    | Render                           |





Installation Process



Completed Project

### Project Overview

A Mapetherm external wall insulation and protection system was installed throughout a new eco-funded residential project in Berwick-upon-Tweed, on the Scottish Borders.

Mapetherm EPS external thermal insulation panels, were bonded to the external walls using Mapetherm AR1 GG one-component cementitious mortar.

The polystyrene panels were then reinforced with Mapetherm AR1 GG and a reinforcing layer of Mapetherm Net alkali-resistant glass fibre mesh, prior to application of water-repellant coloured basecoat primer.

All surfaces then received a protective decorative coating of Mapei Silancolor Tonachino – a transparent, water-repellant siloxane coating with a textured finish.

Endorsed By:



8



@MapeiUK

T: 0121 508 6970

E: [info@mapei.co.uk](mailto:info@mapei.co.uk)W: [www.mapei.co.uk](http://www.mapei.co.uk)

9



**Before**

The existing condition of the property, low energy efficiency.



**During**

Installation of final finishing coats monitored by Mapei.



**Completion**

An enhanced energy efficient property with an attractive rendered finish.



**Upon Completion we will:**

- Carry out final inspections of the property
- Issue a maintenance manual
- Issue a warranty



Endorsed By:



12

**Contact Us**

We will assist in your requirements and provide a detailed specification which will include any remedial works required to the existing substrate using all the appropriate materials from the Mapei range of products.

Once a specification is produced, we will put you in contact with local specialist installers who will provide detailed costings for the project and advise on time scales for the work.

Whether you are a property owner or a tenant, Mapei provides a total support package, from conception to completion



@MapeiUK

T: 0121 508 6970

E: [info@mapei.co.uk](mailto:info@mapei.co.uk)W: [www.mapei.co.uk](http://www.mapei.co.uk)

13

### What help is available to fund your project?

- Government Grants
- Energy Company Obligation funding
- Property owners fund
- Other government funding is available

For the latest details of grants and eligibility please visit [www.mapei.co.uk](http://www.mapei.co.uk)

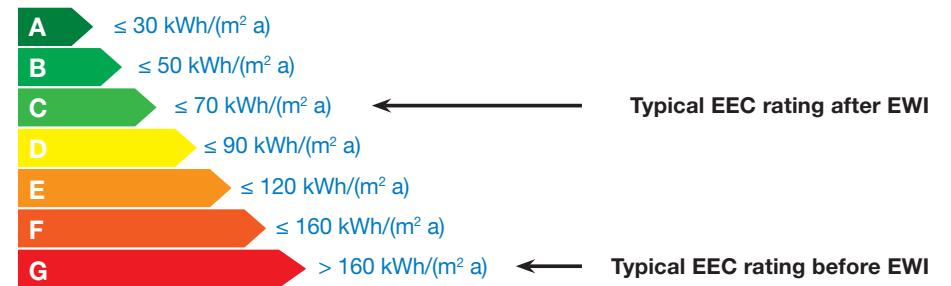
Endorsed By:



14

### Power Consumption Chart

#### Low Consumption



#### High Consumption

\*Results may vary dependant on individual property



@MapeiUK

T: 0121 508 6970

E: [info@mapei.co.uk](mailto:info@mapei.co.uk)

W: [www.mapei.co.uk](http://www.mapei.co.uk)

15



## MAPEI UK LTD

Mapei House, Steel Park Road  
Halesowen, West Midlands. B62 8HD.

Tel: 0121 508 6970

Fax: 0121 508 6960

info@mapei.co.uk

www.mapei.co.uk

### Paints



### Repair Products



### Cleaning



### Sealants



For a full range of products & systems please visit [www.mapei.co.uk](http://www.mapei.co.uk)

Endorsed by

