

Guide to help choose Waterproofing Products



Balconies and Terraces



Bathrooms, Damp environments,
Swimming-pools



Underground structures



Repair

QUICK GUIDE

1

Repairing of swimming pools and basins



Mapoproof Swell - Lamprostex - Mapelastix - Mapanof 150 -
Mapelastix Smart - Mapopax Sel - Monolastix Ultra -
Mapeband - Mapeband TPE - Drain Vertical

2

Sealing pipes



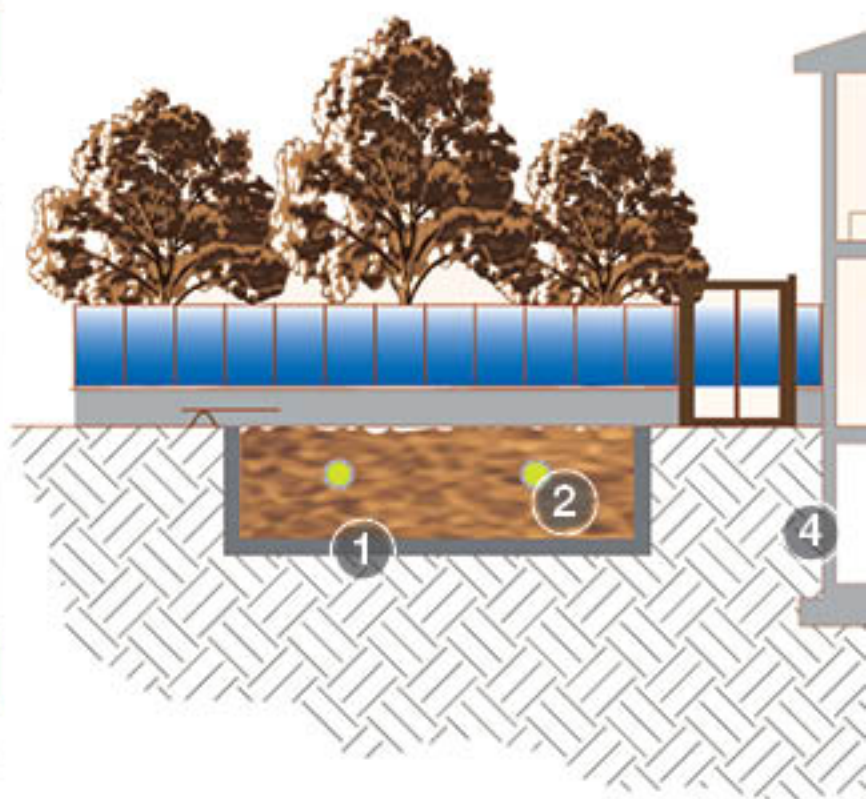
Mapoproof Swell - Lamprostex

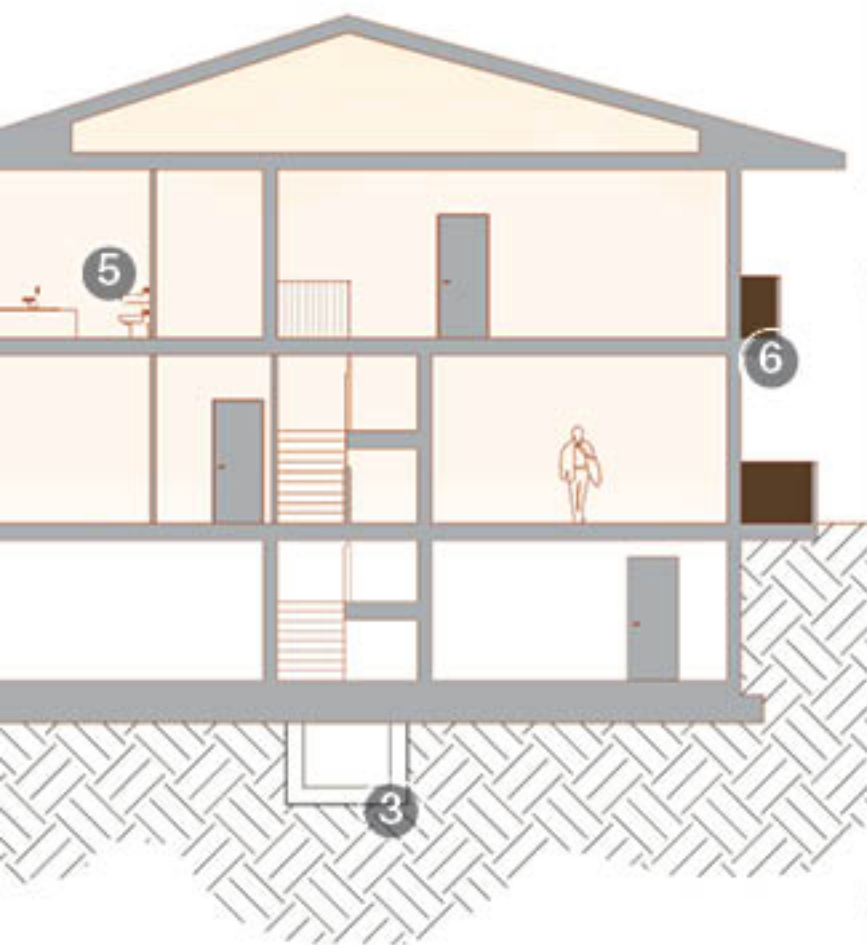
3

Repairing of lift shafts



Lamprostex - Mapoproof Swell - Idroselax -
Mapelastix Foundation





4

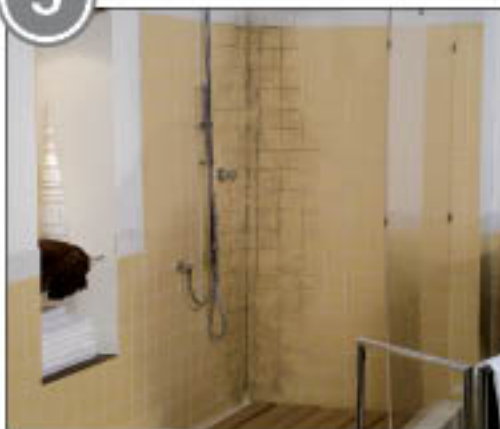
Repairing of underground environments



Lampocellex - Mapaproof Sew all - Idrocellex - Map elastik
Foundation - Mapap roof - Jatrostop 525

5

Repairing of bathrooms, showers and laundries



Mapogem WPS - Mapelastik AquaDefense -
Mapaband PE 120 - Drain Lateral or Drain Vertical

6

Repairing of terraces and balconies



Mapelastik - Maponer 150 - Mapelastik Smart - Maporex Sol -
Mapelastik AquaDefense - Monelastik - Monolastik Ultra -
Mapaband - Mapaband Tpo - Drain Line

New construction

QUICK GUIDE

Foundations

1



Mapaproof - Mapaproof LW

Sealing construction joints

2



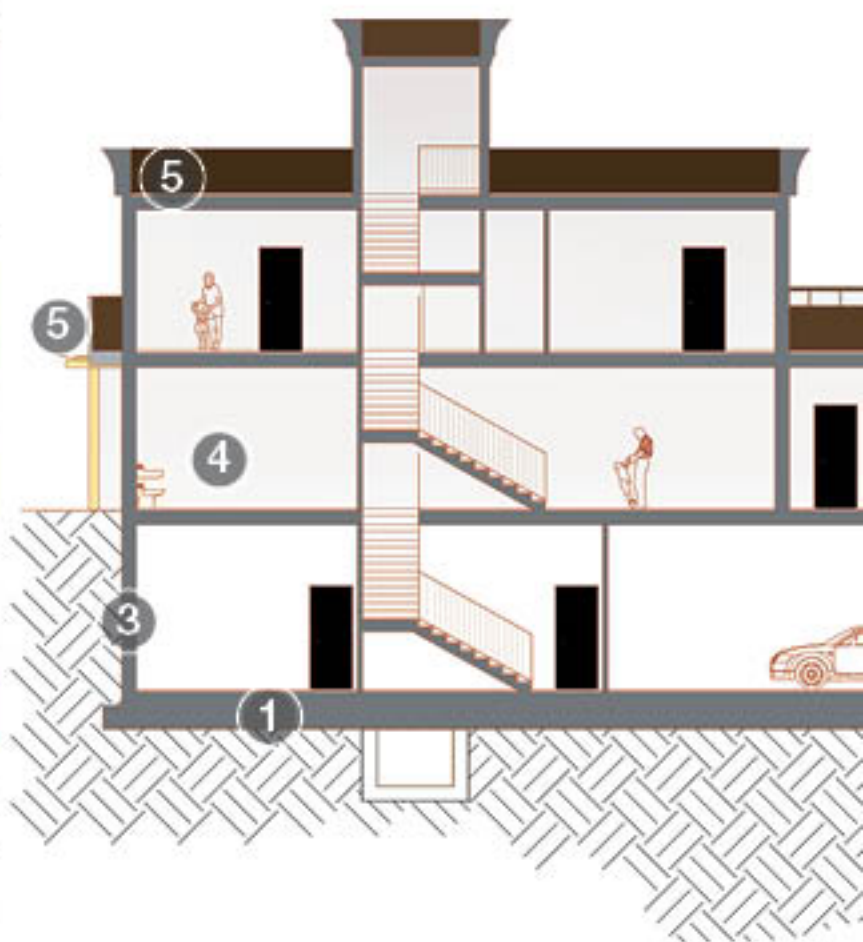
Idrostop - Idrostop B25

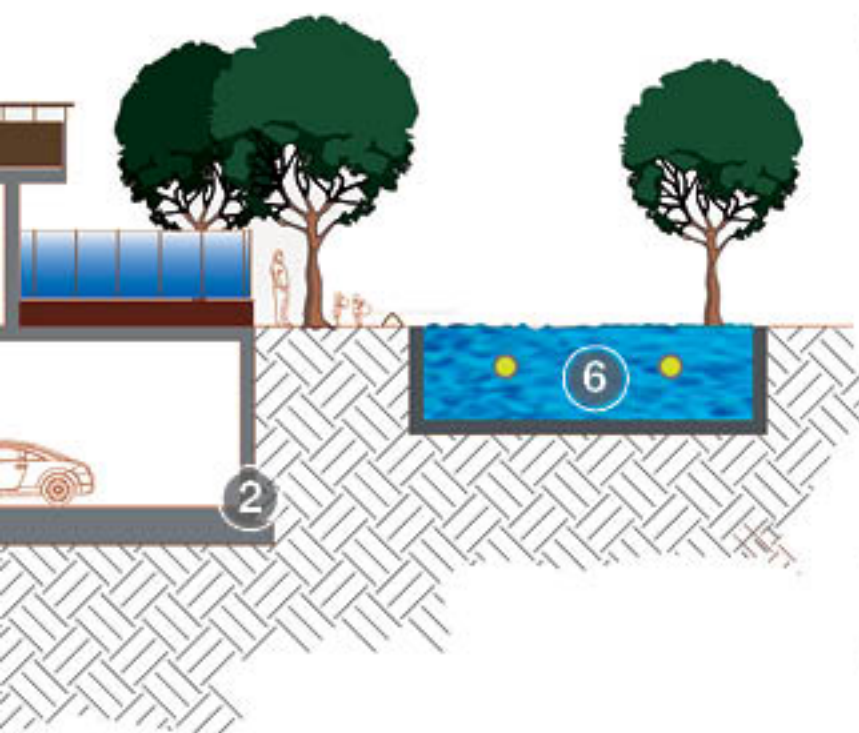
Waterproofing of ground walls

3



Mapaproof - Mapaproof LW - Mapalastic Foundation - Plastimel Line





4 **Repairing of bathrooms showers and laundries**



Mapagum WPS - Mapalastic AquaDefense - Mapaband PE 120 - Drain Latexal or Drain Vertical

5 **Waterproofing of balconies and terraces**



Mapalastic - Mapanet 150 - Mapalastic Smart - Mapatex Sol - Mapalastic AquaDefense - Monoblastic - Monoblastic Ultra - Mapaband - Mapaband TPE - Drain Line

6 **Repairing of swimming pools and basins**



Mapalastic - Mapanet 150 - Mapalastic Smart - Mapatex Sol - Monoblastic Ultra - Mapaband - Mapaband TPE - Drain Vertical

BATHROOMS, DAMP ENVIRONMENTS, SWIMMING POOL & TERRACES



Toilets, swimming pools, spas, balconies and terraces – all environments to be protected from water.

In order to waterproof these environments efficiently it is important to:

- protect structures from deterioration;
- improve rooms' comfort;
- reduce maintenance costs to the minimum.

MAPEI always offer to their customers different systems for specific problems and always have the right product with suitable accessories to solve any problem.



Bathrooms



Swimming Pools



Balconies and Terraces



Mapelastic



- ▶ Two-component flexible cementitious mortar.
- ▶ For protection and waterproofing.
- ▶ For structures particularly subject to cracking.
- ▶ Used in conjunction with Mapeponit 110, Mapelastic may also be used on surfaces particularly stressed or crazed and help improve both elongation at break and crack bridging.

Mapelastic AquaDefense



- ▶ Ready-to-use, flexible, liquid waterproofing membrane.
- ▶ Solvent-free.
- ▶ Ultra-quick drying.
- ▶ For internal and external waterproofing applications.
- ▶ Ceramic and stone material may be applied after only 4 hours.

Monolastic



- ▶ One component, flexible cementitious mortar.
- ▶ It bonds extremely well to all surfaces in concrete, masonry, ceramic and marble.

Mapeband



- ▶ Alkali-resistant rubber tape with felt for cementitious waterproofing systems and liquid membranes.
- ▶ For walls and floors.
- ▶ For any type of substrate.
- ▶ For baths, showers, terraces, balconies, etc., that are to be tiled with ceramic tiles, marble, natural stones.

Mapeband PE 120



- ▶ PVC tape for waterproofing systems formed using liquid membranes.
- ▶ Flexible waterproofing seal of edges, separation joints, pipes and drains.

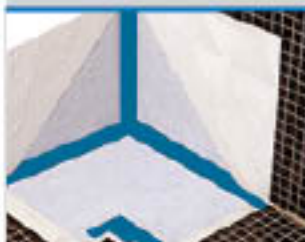


Mapelastic Smart



- ▶ Two-component, high- flexibility cementitious mortar.
- ▶ For protection and waterproofing.
- ▶ Used in conjunction with Mapeponit 100 or Mapebox Sol, Mapelastic may be also used surfaces particularly stressed or crazed and help improve both elongation at break and crack bridging.

Mapegum WPS



- ▶ Fast drying, liquid elastic membrane for interior waterproofing.
- ▶ Solvent-free.
- ▶ Ready-to-use.
- ▶ Application: smooth trowel, roller or spray in two crossing coats (1 mm each).
- ▶ For thin thicknesses ca. 1 mm max. per coat.

Monolastic Ultra



- ▶ One component, highly-flexible cementitious mortar.
- ▶ It may also be applied on vertical surfaces without trowelling and without waste.
- ▶ It bonds extremely well to all surfaces in concrete, masonry, ceramic and marble.

Mapeband TPE



- ▶ TPE tape for flexible sealing and waterproofing structural joints subject to movements up to 6 or 10 mm.
- ▶ For expansion joints in road-works, water tunnels and covering applications.

Drain Vertical Drain Lateral



- ▶ Floor-drain kit.



Mapelastic



- ▶ Two-component flexible cementitious mortar.
- ▶ For protection and waterproofing.
- ▶ For structures particularly subject to cracking.
- ▶ Used in conjunction with **Mapenet 150**, Mapelastic may also be used on surfaces particularly stressed or crazed and help improve both elongation at break and crack bridging.



Mapelastic Smart



- ▶ Two-component, high-flexibility cementitious mortar.
- ▶ For protection and waterproofing.
- ▶ Used in conjunction with **Mapenet 100** or **Mapolux Sel**, Mapelastic may be also used surfaces particularly stressed or crazed and help improve both elongation at break and crack bridging.

Monolastic Ultra



- ▶ One component, highly-flexible cementitious mortar.
- ▶ It may also be applied on vertical surfaces without running and without waste.
- ▶ It bonds extremely well to all surfaces in concrete, masonry, ceramic and marble.

Mapeproof Swell



- ▶ Hydro-expansive, rubber-based hydrophilic sealant paste in cartridges, applied using an extrusion gun.
- ▶ For waterproof, flexible seals in cracks in reinforced cement and in prefabricated elements infiltrated by water.

Mapeband



- ▶ Alkali-resistant rubber tape with felt for cementitious waterproofing systems and liquid membranes.
- ▶ For walls and floors.
- ▶ For any type of substrate.
- ▶ For baths, showers, terraces, balconies, etc., that are to be tiled with ceramic tiles, marble, natural stones.

Mapeband TPE



- ▶ TPE tape for flexible sealing and waterproofing structural joints subject to movements up to 0 or 10mm.
- ▶ For expansion joints in road-works, water tunnels and covering applications.

Drain Vertical



- ▶ Floor-drain kit.

Mapenet 150



- ▶ Alkali-resistant glass fibre mesh in compliance with ETAG 004 guides.
- ▶ For reinforcing waterproof protections, anti-fracture membranes and insulation coatings.

Mapetex Sel



- ▶ Non-woven, macro-holed polypropylene fabric.
- ▶ For reinforcing waterproofing membranes.

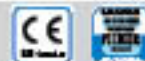




Mapelastic



- ▶ Two-component flexible cementitious mortar.
- ▶ For protection and waterproofing.
- ▶ For structures particularly subject to cracking.
- ▶ Used in conjunction with **Mapenet 150**, Mapelastic may also be used on surfaces particularly stressed or crazed and help improve both elongation at break and crack bridging.



Mapelastic Smart



- ▶ Two-component, high-flexibility cementitious mortar.
- ▶ For protection and waterproofing.
- ▶ Used in conjunction with **Mapenet 100** or **Mapetex Sel**, Mapelastic may be also used surfaces particularly stressed or crazed and help improve both elongation at break and crack bridging.

Mapelastic AquaDefense



- ▶ Ready-to-use, flexible, liquid waterproofing membrane.
- ▶ Solvent-free.
- ▶ Ultra-quick drying.
- ▶ For internal and external waterproofing applications.
- ▶ Ceramic and stone material may be applied after only 4 hours.

Monolastic



- ▶ One component, flexible cementitious mortar.
- ▶ It bonds extremely well to all surfaces in concrete, masonry, ceramic and marble.

Monolastic Ultra



- ▶ One component, highly-flexible cementitious mortar.
- ▶ It may also be applied on vertical surfaces without running and without waste.
- ▶ It bonds extremely well to all surfaces in concrete, masonry, ceramic and marble.

Mapenet 150



- ▶ Alkali-resistant glass fibre mesh in compliance with ETAG 004 guide.
- ▶ For reinforcing waterproof protections, anti-fracture membranes and insulation coatings.

Mapetex Sel



- ▶ Non-woven, macro-holed polypropylene fabric.
- ▶ For reinforcing waterproofing membranes.

Mapeband



- ▶ Alkali-resistant rubber tape with foil for cementitious waterproofing systems and liquid membranes.
- ▶ For walls and floors.
- ▶ For any type of substrate.
- ▶ For baths, showers, terraces, balconies, etc., that are to be tiled with ceramic tiles, marble, natural stones.

Mapeband TPE



- ▶ TPE tape for flexible sealing and waterproofing structural joints subject to movements up to 5° or 10 mm.
- ▶ For separation joints in road-works, water tunnels and covering applications.

Mapeproof Swell



- ▶ Hydro-expansive, rubber-based hydrophilic sealant paste in cartridges, applied using an extrusion gun.
- ▶ For waterproof, flexible seals in cracks in reinforced cement and in prefabricated elements infiltrated by water.

UNDERGROUND STRUCTURES



Underground structures: the parts of a building which are most often in contact with water and aggressive elements in the ground.

All structures below ground level come into contact with the humidity in the ground or with the water table and must be protected to guarantee the life-span of buildings. If no suitable protection is applied, there are no construction materials with the capacity of resisting the various factors which are present below ground level. MAPEI offers a wide array of repair and protection solutions which guarantee an efficient solution for any construction element.



Maapeproof



- ▶ Bentonite waterproofing sheets for structures below ground level.
- ▶ Suitable for both horizontal and vertical surfaces.
- ▶ For both post-cast and pre-cast walls.

Maapeproof CD



- ▶ Polyethylene washers.
- ▶ For fastening Maapeproof and Maapeproof UN bentonite sheets in place on horizontal and vertical surfaces.
- ▶ To be used with both hammer and nails or with a nail gun.

Maapeproof Swell



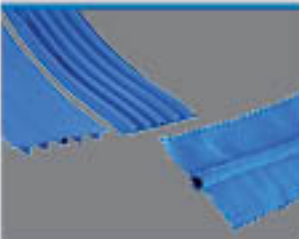
- ▶ Hydro-expansive, rubber-based hydrophilic sealant paste in cartridges, applied using an extrusion gun.
- ▶ For waterproof, flexible seals in cracks in reinforced cement and in prefabricated elements infiltrated by water.

Idrostop B25



- ▶ Waterproof profile made from natural sodium bentonite and polymers.
- ▶ Compact, flexible and stable.
- ▶ Seals the formation of small localized gravel clusters in concrete.
- ▶ It forms a perfect seal in construction joints.
- ▶ May be applied with nails, no anchoring mesh required.

Idrostop PVC BI-BE



- ▶ PVC water stop for sealing structural joints.
- ▶ For waterproofing structural joints in civil, industrial and hydraulic constructions.

Idrosilex



- ▶ Waterproofer for cementitious mortars.
- ▶ For waterproofing basements, swimming pools, reservoirs, tunnels etc.
- ▶ Available in powder and liquid form.



Maapeproof LW



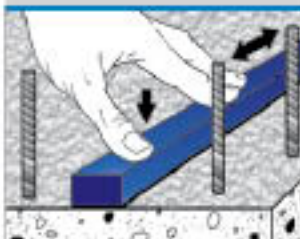
- ▶ Bentonite waterproofing sheets for underground structures.
- ▶ For use on horizontal and vertical structures below ground level with a maximum water table of 8 metres.
- ▶ For both post-cast walls and pre-cast walls.

Maapeproof Mastic



- ▶ Bentonite paste made from natural sodium bentonite and plasticising additives for sealing elements which pass through surfaces.
- ▶ Extremely easy-to-use.
- ▶ Maapeproof Mastic is used for sealing elements which pass through surfaces, for sealing formwork and small honeycomb voids, to blend in edges and corners and for localized repairs to bentonite sheets.

Idrostop



- ▶ Hydrophilic expandable rubber sealant for watertight construction joints.
- ▶ Specially designed to form watertight construction joints up to 8 hydraulic pressure of 8 atm.
- ▶ Bentonite-free.
- ▶ Creates an active barrier against pressure of water (positive and negative)
- ▶ For concrete, metal, PVC and natural stone.

Maapeband TPE



- ▶ TPE tape for flexible sealing and waterproofing structural joints subject to movements up to 5 or 10mm.
- ▶ For expansion joints in road-works, water tunnels and covering applications.



Idrosilex Pronto



- ▶ Osmotic cementitious mortar suitable for contact with drinking water.
- ▶ For waterproofing foundations, walls, cellars, basements, lift-rooms, swimming pools, canals and reservoirs. Also safe for use on containers holding drinking water.
- ▶ To be applied by brush, trowel or spray.



Mapelastic Foundation



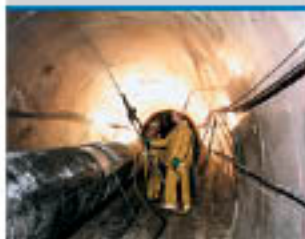
- ▶ Two-component, flexible cementitious mortar for waterproofing.
- ▶ For concrete surfaces subject to negative and positive hydrostatic pressure.
- ▶ For foundation walls, car-parks, environments below ground level, metal channels and swimming pools.
- ▶ To be applied by roller or spray.
- ▶ For horizontal and vertical surfaces at a thickness of at least 2 cm.

Resfoam 1KM



- ▶ Super fluid one-component polyurethane resin to be injected for waterproofing.
- ▶ It penetrates several hundred micron thick cracks.
- ▶ For sealing even in presence of water infiltrations.

Foamjet T



- ▶ High viscosity ultra rapid setting two-component polyurethane resin to be injected.
- ▶ For consolidating and waterproofing structural elements subject to high pressure water ingress.
- ▶ Ultra quick setting.
- ▶ For waterproofing cracked concrete and masonry structures such as tunnels, shafts, dams, canals, bulkheads, flooring or beds subject to strong water ingress.
- ▶ It penetrates several hundred micron thick cracks.
- ▶ For sealing even in presence of water infiltrations.

Plastimul 1K Super Plus



- ▶ One-component, solvent-free, quick-drying, low-shrinkage, high-yield, high flexibility bitumen waterproofing emulsion containing polystyrene spheres and rubber granules.
- ▶ Solvent-free, odorless, ecological, easy to work with and is resistant to aggressive substances contained in the ground.
- ▶ For waterproofing horizontal and vertical concrete and brickwork surfaces subject to high dynamic loads.
- ▶ For spot-bonding insulating panels used to protect the perimeter of the waterproofing layer.
- ▶ To be applied by flat or notched trowel or by spray using a peristaltic pump.

Lamposilex



- ▶ Ultra-fast setting and drying hydraulic binder for plugging water leaks.
- ▶ Use Lamposilex to plug any source of water, even under pressure, in basements, tunnels, subways etc.
- ▶ For sealing watertight rigid joints in hydraulic concrete structures, sewers, tanks and cisterns.

Foamjet F



- ▶ Fluid ultra rapid setting two-component polyurethane resin to be injected.
- ▶ For consolidating and waterproofing structural elements subject to weak water ingress.
- ▶ Ultra quick setting.
- ▶ For consolidating of rocks and grounds.
- ▶ For waterproofing cracked concrete and masonry structures such as tunnels, shafts, dams, canals, bulkheads, damp flooring or beds.
- ▶ It penetrates several hundred micron thick cracks.
- ▶ For sealing even in presence of water infiltrations.

Plastimul



- ▶ Solvent-free, bitumen waterproofing emulsion for general purpose use.
- ▶ For horizontal and vertical surfaces.
- ▶ For foundations, retaining walls, layers beneath tiles, etc.

Plastimul 2K Plus

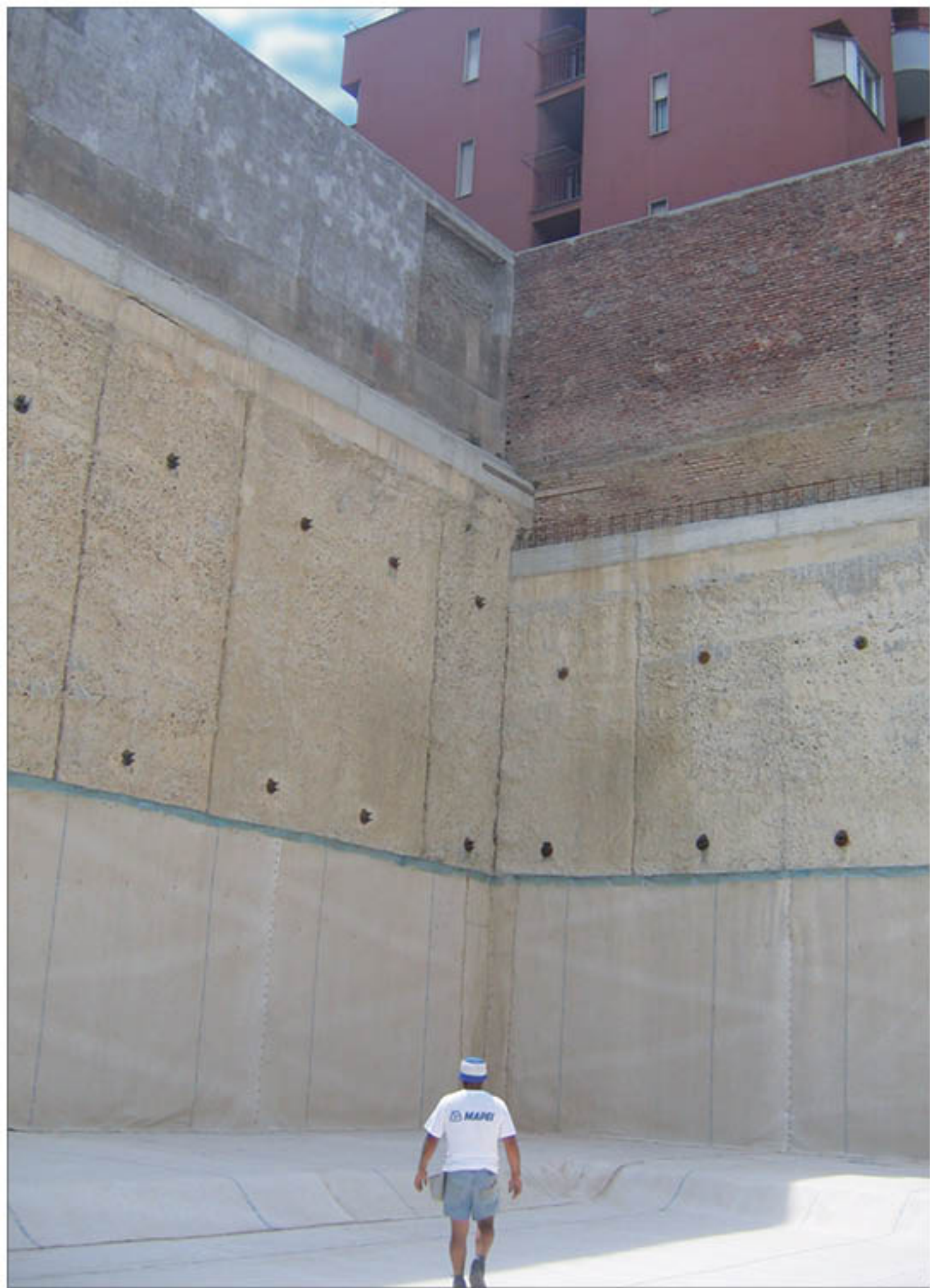


- ▶ Two-component, low-shrinkage, high-flexibility bitumen waterproofing emulsion
- ▶ Solvent-free, ecological
- ▶ For waterproofing horizontal and vertical concrete and brickwork surfaces at low temperatures or high levels of damp and on smooth surfaces.
- ▶ It may also be used for spot-bonding insulating panels used to protect the perimeter of the waterproofing layer.
- ▶ To be applied by flat or notched trowel or by spray using a peristaltic pump.

Plastimul 2K Super



- ▶ Two-component, quick-drying, low-shrinkage, high-flexibility bitumen waterproofing emulsion containing polystyrene spheres.
- ▶ Resistant to aggressive substances contained in the ground.
- ▶ For waterproofing horizontal and vertical concrete and brickwork surfaces at low temperatures or high levels of damp and on smooth surfaces.
- ▶ It may also be used for spot-bonding insulating panels used to protect the perimeter of the waterproofing layer.
- ▶ To be applied by flat or notched trowel or by spray using a peristaltic pump.



BATHROOMS, DAMP ENVIRONMENTS, SWIMMING POOL & TERRACES

SELECTION CHART

	Horizontal and vertical surfaces	Fillets	Joints	Cross-members	Drains
BATHROOMS & DAMP ENVIRONMENTS					
Mapelastic	•				
Mapelastic Smart	•				
Mapelastic AquaDefense	•				
Mapegum WPS	•				
Monolastic	•				
Monolastic Ultra	•				
Mapeband		•	•	•	
Mapeband PE 120		•	•	•	
Drain Lateral					•
Drain Vertical					•
SWIMMING POOLS					
Mapelastic	•				
Mapelastic Smart	•				
Monolastic Ultra	•				
Mapeproof Swell				•	
Mapeband		•	•		
Mapeband TPE			•		
Drain Vertical					•
BALCONIES & TERRACES					
Mapelastic	•				
Mapelastic Smart	•				
Mapelastic AquaDefense	•				
Monolastic	•				
Monolastic Ultra	•				
Mapenet 150	•				
Mapetex Sel	•				
Mapeband		•	•		
Mapeband TPE			•		
Mapeproof Swell				•	
Drain Lateral					•
Drain Vertical					•
Drain Front					•

UNDERGROUND STRUCTURES SELECTION CHART

	Plateau	Post-cast walls	Pre-cast walls	Reinforced concrete walls with negative lift	Brick walls with negative lift	Lift shaft	Pile heads	Structural joint	Construction joint	Through bodies
UNDERGROUND STRUCTURES										
Mapeproof	•	•	•			•	•			
Mapeproof LW	•	•	•			•	•			
Mapeproof Mastic							•			•
Mapeproof Swell				•		•	•			•
Idrostop						•			•	•
Idrostop B25						•	•		•	•
Mapeband		•							•	
Mapeband TPE								•		
Idrostop PVC BI-BE								•		
Idrosilex						•				
Idrosilex Pronto		•		•	•	•				
Mapelastic Foundation		•		•	•	•				
Lamposilex				•		•			•	•
Resfoam 1KM	•	•	•			•				
Foamjet F - Foamjet T	•	•	•			•				
Plastimul		•								
Plastimul 1K Super Plus		•								
Plastimul 2K Plus		•								
Plastimul 2K Super		•								

• After carrying out the render with Planitop HDM Maxi.

The **best defense**
against water



Mapelastic **AquaDefense**

Mono-component, ready-to-use flexible liquid membrane for waterproofing under ceramic, marble and mosaic laid on internal and external surfaces.

- **One-component, ready-to-use**

- Quick drying
- No reinforcement required
- Rain fast after just 3 hours

- **Tiles installation after just 4 hours with suitable adhesive**

- Rooms treated with the product back in use after just 1 day
- Leed Italy credits: up to 2 points for regional materials



HEADQUARTERS

MAPEI SpA
Via Cafiero, 22 - 20158 Milan
Tel. +39-02-37673.1
Fax +39-02-37673.214
Internet: www.mapei.com
E-mail: mapei@mapei.it

MAPEI UK Ltd

Mapei House, Steel Park Road, Halesowen B62 8HD
Tel. 0121 508 6970
Fax 0121 508 6960
Internet: www.mapei.co.uk
E-mail: info@mapei.co.uk