

Drawing Details:

Silancolor Tonachino - Transpirant, water-repellent, thick-layered siloxane coating product with high filling properties for internal and external surfaces.

Silancolor Basecoat - Silancolor Base Coat is a coloured silicone resin based paint in water dispersion, with micro granular quartz and selected charges. It is used to even out the absorption of the substrate and promote bonding of successive coats of paint and layered finishing materials from the Silancolor range.

Mapetherm Net - Alkali-resistant glass fibre mesh suitable for reinforced skimming layers when repairing façades, or for the execution of MAPETHERM thermal insulation systems.

Mapetherm AR 1 GG - One-component, large-grained cementitious mortar for bonding and levelling insulation panels and for thermal insulation systems. ETA 10/0024 & ETA 10/0025.

STATUS: APPROVED - REV 1

Project: Coping Trim

Drawing Ref: MA23B

Date: 25/10/2022 09:08:49

Drawn by: LR

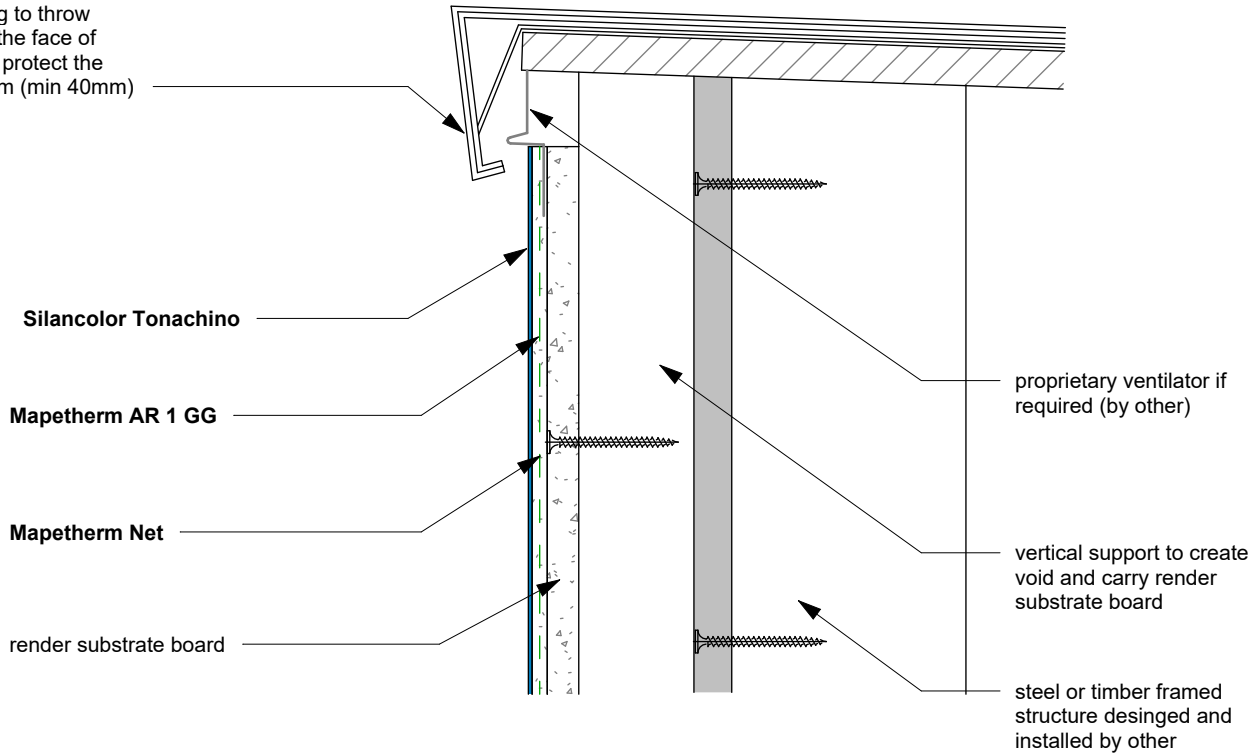
Checked by: AJ

Approved by: SP



Mapei House, Steel Park Road,
Halesowen, B62 8HD
Website: www.mapei.co.uk,
Email: technical-uk@mapei.co.uk

sufficient overhang to throw water away from the face of the render and to protect the head of the system (min 40mm)



Silancolor Tonachino

Mapetherm AR 1 GG

Mapetherm Net

render substrate board

proprietary ventilator if required (by other)

vertical support to create void and carry render substrate board

steel or timber framed structure desinged and installed by other

COPING TRIM

These standard details are provided for guidance only and should not be considered as comprehensive for design or construction purposes. It is the responsibility of the appointed principal designer to ensure that these details are appropriated adapted for specific projects.