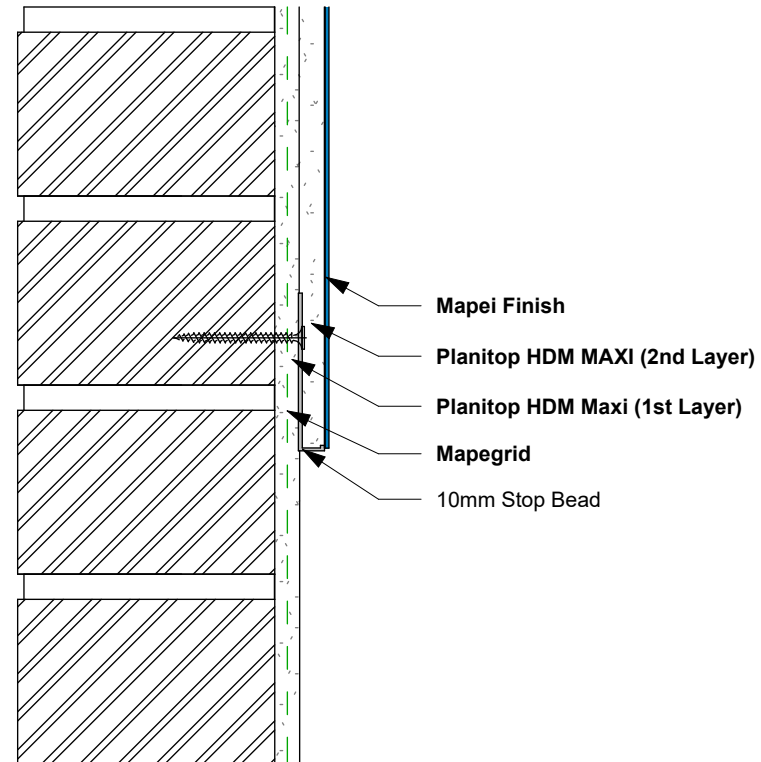


DPC



DAY JOINT

## DAYWORK JOINT & JUNCTION WITH DPC

*These standard details are provided for guidance only and should not be considered as comprehensive for design or construction purposes. It is the responsibility of the appointed principal designer to ensure that these details are appropriated adapted for specific projects.*

### Drawing Details:

**Planitop HDM MAXI** - Two-component ready-mixed, high ductility pozzolan-reaction, fibre-reinforced mortar for structural "reinforced" strengthening work, when used in combination with mesh from the **MAPEGRID** line, and for smoothing and levelling concrete and masonry.

**STATUS:** APPROVED - REV 1

**Project:** Daywork Joints & Junction with DPC

**Drawing Ref:** MA75B

**Date:** 03/07/2023 17:07:24

**Drawn by:** LR

**Checked by:** AJ

**Approved by:** SP



Mapei House, Steel Park Road,  
Halesowen, B62 8HD  
Website: [www.mapei.co.uk](http://www.mapei.co.uk),  
Email: [technical-uk@mapei.co.uk](mailto:technical-uk@mapei.co.uk)