

Top Hat Section
(Minimum 15mm)

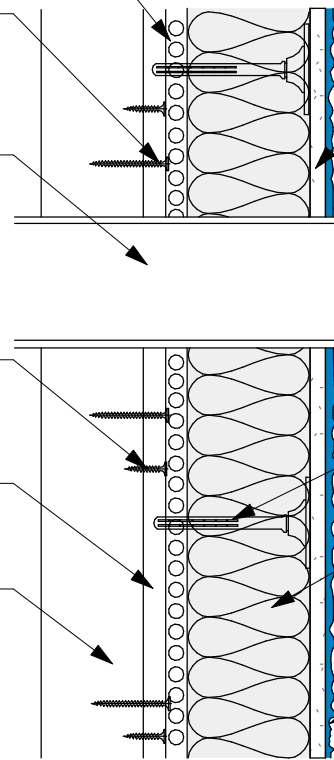
Suitable fixing for sheathing board
recommended by the manufacturer

Air Vent

Mapetherm Top Hat Fixing

Versapanel or an
approved sheathing board

Timber Framework
by other



Mapetherm AR1 GG
incorporating Mapetherm Net

Air Vent installed by other

Mapesil AC

Mapetherm Steel & Timber Fixing
into Top Hat Profile

Mapetherm EPS

Mapei Topcoat

Drawing Details:

Mapetherm AR1 GG - One component cementitious mortar for bonding, levelling and reinforcing thermal-insulating panels and thermal insulation systems.

Mapetherm EPS - Expanded sintered polystyrene insulating panels for thermal insulation systems.

Mapetherm Net - Glass fibre mesh resistant to alkalis, ideal for reinforcing skim coats for repairing façades and installing Mapetherm thermal insulation systems.

Mapesil AC - Pure, mould-resistant, acetic, silicone sealant available in over 40 colours.

STATUS: APPROVED - REV 1.2

Project: Air Vent Detail With Cavity

Drawing Ref: MAEPSAR161

Date: 26/06/2019 10:09:25

Drawn by: LPR

Checked by: GB

Approved by: SP

AIR VENT DETAIL WITH CAVITY

These standard details are provided for guidance only and should not be considered as comprehensive for design or construction purposes. It is the responsibility of the appointed principal designer to ensure that these details are appropriated adapted for specific projects.



Mapei House, Steel Park Road,
Halesowen, B62 8HD
Website: www.mapei.co.uk,
Email: technical-uk@mapei.co.uk