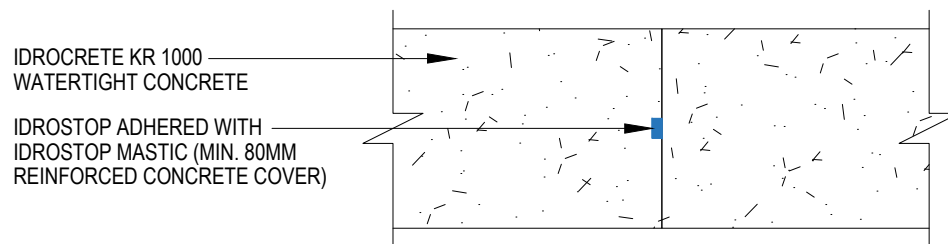
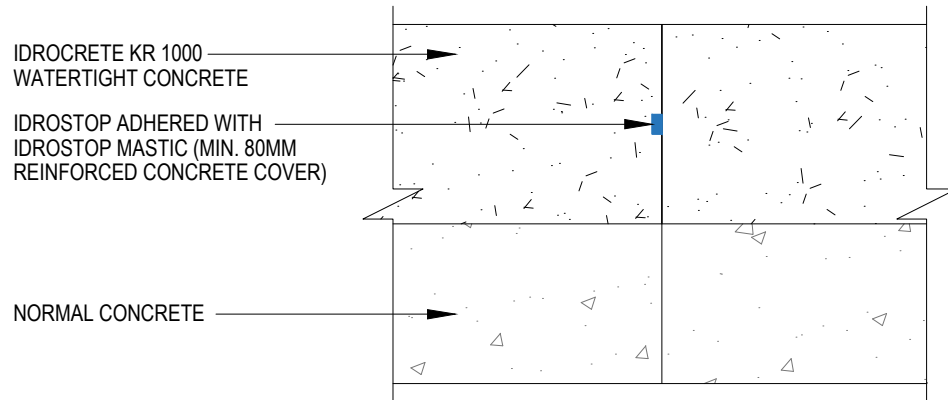
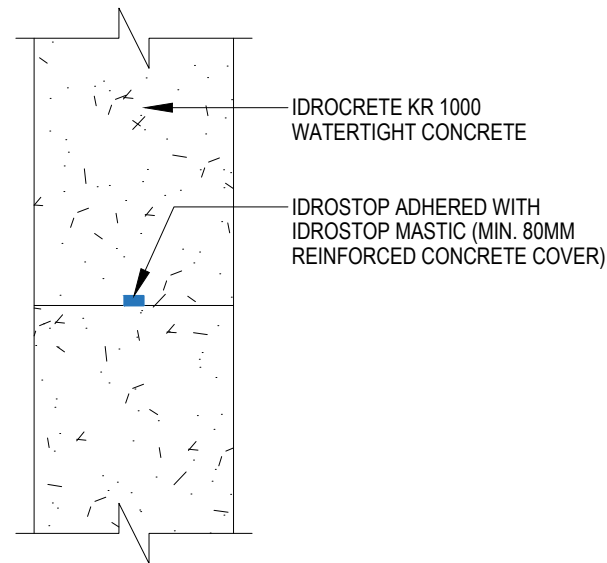


IDROCRETE KR 1000 WATERTIGHT CONCRETE CONSTRUCTION JOINT FOR RC WALL AND SLAB



SLAB



WALL

Drawing Details:

IDROSTOP - Hydrophilic, expanding rubber profiles for waterproof working joints.

IDROSTOP MASTIC - a ready to use solvent-free single component adhesive with a base of MS polymers.

IDROCRETE KR 1000 - Powdered crystallising admixture for waterproof concrete.

STATUS: APPROVED

Drawing Title:
IDROCRETE KR 1000 WATERTIGHT
CONCRETE-CONSTRUCTION
JOINT FOR RC WALL AND SLAB
Drawing Ref: MA93B

Date: 31/08/2023

Drawn by: DB

Checked by: LR

Approved by: ADL



Mapei House, Steel Park Road,
Halesowen, B62 8HD
Website: www.mapei.co.uk,
Email: technical-uk@mapei.co.uk

These standard details are provided for guidance only and should not be considered as comprehensive for design or construction purposes. It is the responsibility of the appointed principal designer to ensure that these details are appropriately adapted for specific projects.