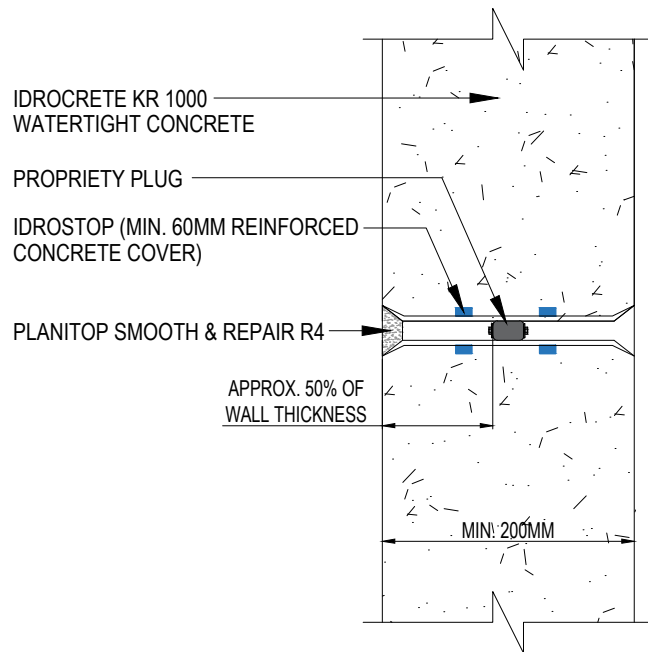
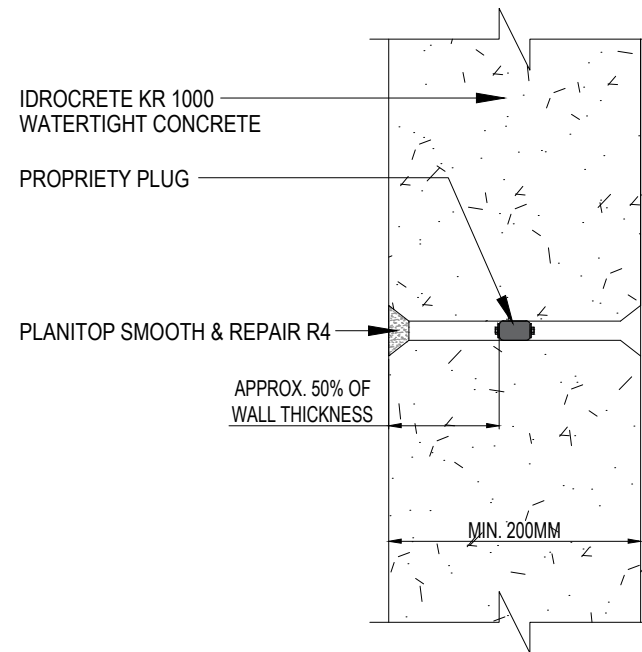


# IDROCRETE KR 1000 WATERTIGHT CONCRETE TIE BAR



**WITH SLEEVES**



**WITHOUT SLEEVES**

**Drawing Details:**

IDROSTOP - Hydrophilic, expanding rubber profiles for waterproof working joints.

PLANITOP SMOOTH & REPAIR R4 - Quick-setting, fibre-reinforced, compensated-shrinkage, thixotropic cementitious mortar for repairing and smoothing concrete, applied in various thicknesses from 3 to 40 mm in a single layer.

IDROCRETE KR 1000 - Powdered crystallising admixture for waterproof concrete.

**STATUS:** APPROVED

**Drawing Title:**  
IDROCRETE KR 1000 WATERTIGHT CONCRETE-TIE BAR

**Drawing Ref:** MA99B

**Date:** 31/08/2023

**Drawn by:** DB

**Checked by:** LR

**Approved by:** ADL



Mapei House, Steel Park Road,  
Halesowen, B62 8HD

Website: [www.mapei.co.uk](http://www.mapei.co.uk),  
Email: [technical-uk@mapei.co.uk](mailto:technical-uk@mapei.co.uk)

These standard details are provided for guidance only and should not be considered as comprehensive for design or construction purposes. It is the responsibility of the appointed principal designer to ensure that these details are appropriately adapted for specific projects.