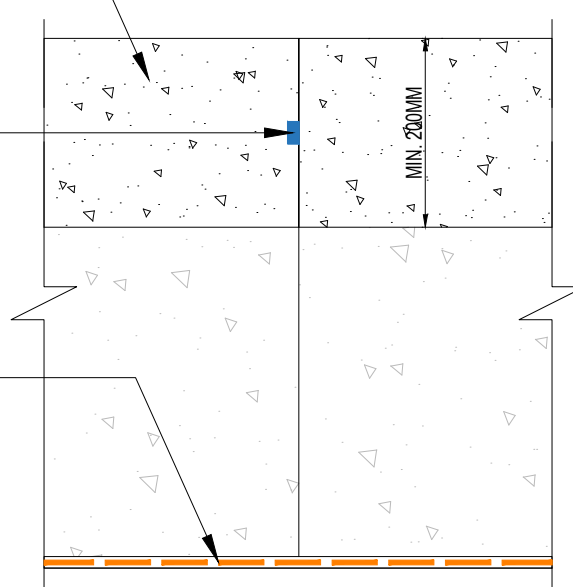


MAPEPROOF AL AP & IDROCRETE KR 1000 WATERTIGHT CONCRETE CONSTRUCTION JOINT FOR RC WALL/SLAB

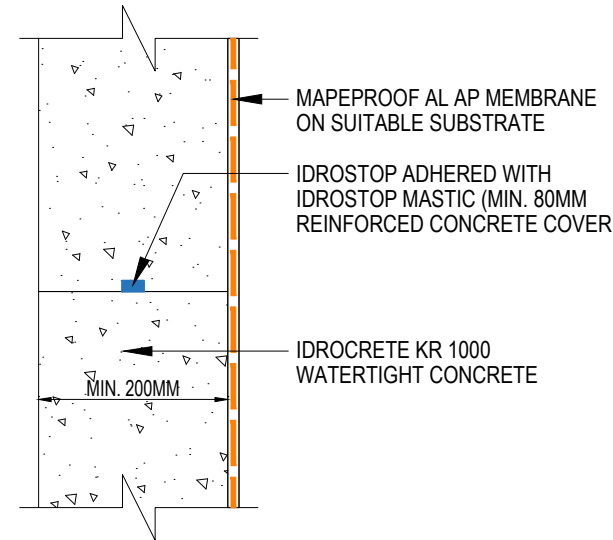
IDROCRETE KR 1000
WATERTIGHT CONCRETE

IDROSTOP ADHERED WITH
IDROSTOP MASTIC (MIN. 80MM
REINFORCED CONCRETE COVER

MAPEPROOF AL AP MEMBRANE
ON SUITABLE SUBSTRATE



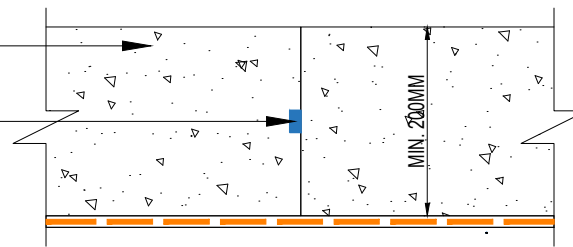
MONOLITHIC CONCRETE SLAB



CONSTRUCTION JOINT WALL

IDROCRETE KR 1000
WATERTIGHT CONCRETE

IDROSTOP ADHERED WITH
IDROSTOP MASTIC (MIN. 80MM
REINFORCED CONCRETE COVER



CONSTRUCTION JOINT FLOOR

Drawing Details:

MAPEPROOF AL AP - Pre-applied, fully bonded, self-adhering, HDPE waterproofing membrane to protect against water underground structures.

IDROSTOP - Hydrophilic, expanding rubber profiles for waterproof working joints.

IDROSTOP MASTIC - One-component adhesive for laying IDROSTOP.

IDROCRETE KR 1000 - Powdered crystallising admixture for waterproof concrete.

STATUS: APPROVED

Drawing Title:
MAPEPROOF AL AP & IDROCRETE KR 1000 WATERTIGHT CONCRETE- CONSTRUCTION JOINT FOR RC WALL/SLAB

Drawing Ref: MA107B

Date: 02/10/2023

Drawn by: DB

Checked by: LR

Approved by: ADL



Mapei House, Steel Park Road,
Halesowen, B62 8HD
Website: www.mapei.co.uk,
Email: technical-uk@mapei.co.uk

These standard details are provided for guidance only and should not be considered as comprehensive for design or construction purposes. It is the responsibility of the appointed principal designer to ensure that these details are appropriately adapted for specific projects.