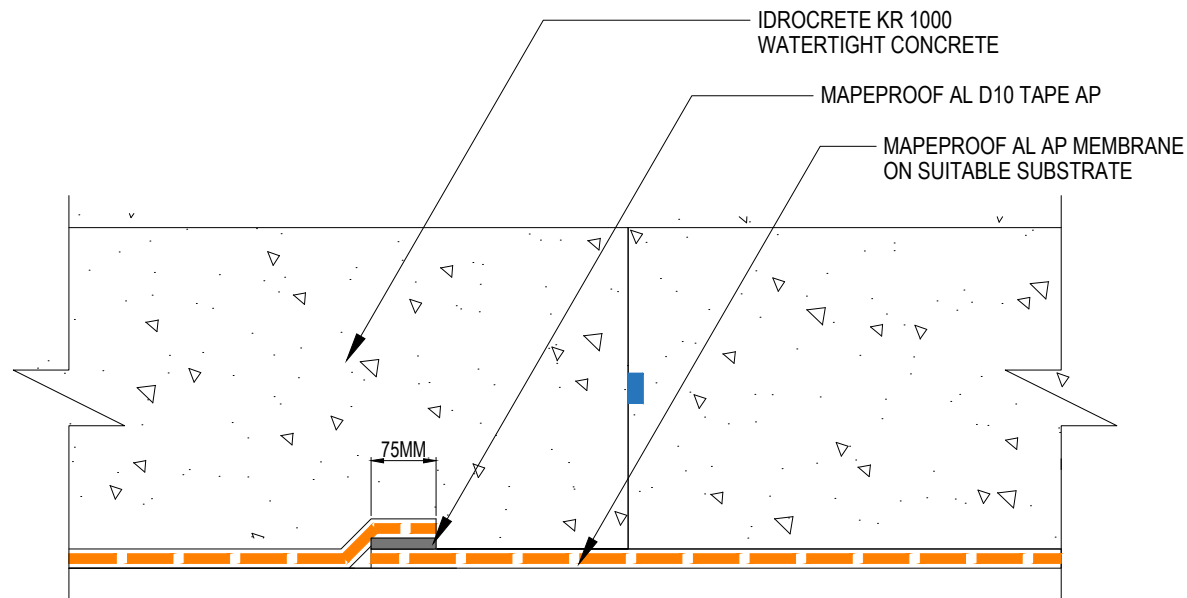


# MAPEPROOF AL AP & IDROCRETE KR 1000 WATERTIGHT CONCRETE MAPEPROOF AL AP LAP DETAIL



## Drawing Details:

MAPEPROOF AL AP - Pre-applied, fully bonded, self-adhering, HDPE waterproofing membrane to protect against water underground structures.

IDROCRETE KR 1000 - Powdered crystallising admixture for waterproof concrete.

MAPEPROOF AL TAPE D10 AP - Double-sided adhesive tape for jointing, sealing and strengthening the Mapeproof AL AP system.

**STATUS:** APPROVED

**Drawing Title:**  
MAPEPROOF AL AP & IDROCRETE KR 1000 WATERTIGHT CONCRETE-  
MAPEPROOF AL AP LAP DETAIL

**Drawing Ref:** MA110B

**Date:** 02/10/2023

**Drawn by:** DB

**Checked by:** LR

**Approved by:** ADL



Mapei House, Steel Park Road,  
Halesowen, B62 8HD

Website: [www.mapei.co.uk](http://www.mapei.co.uk),  
Email: [technical-uk@mapei.co.uk](mailto:technical-uk@mapei.co.uk)