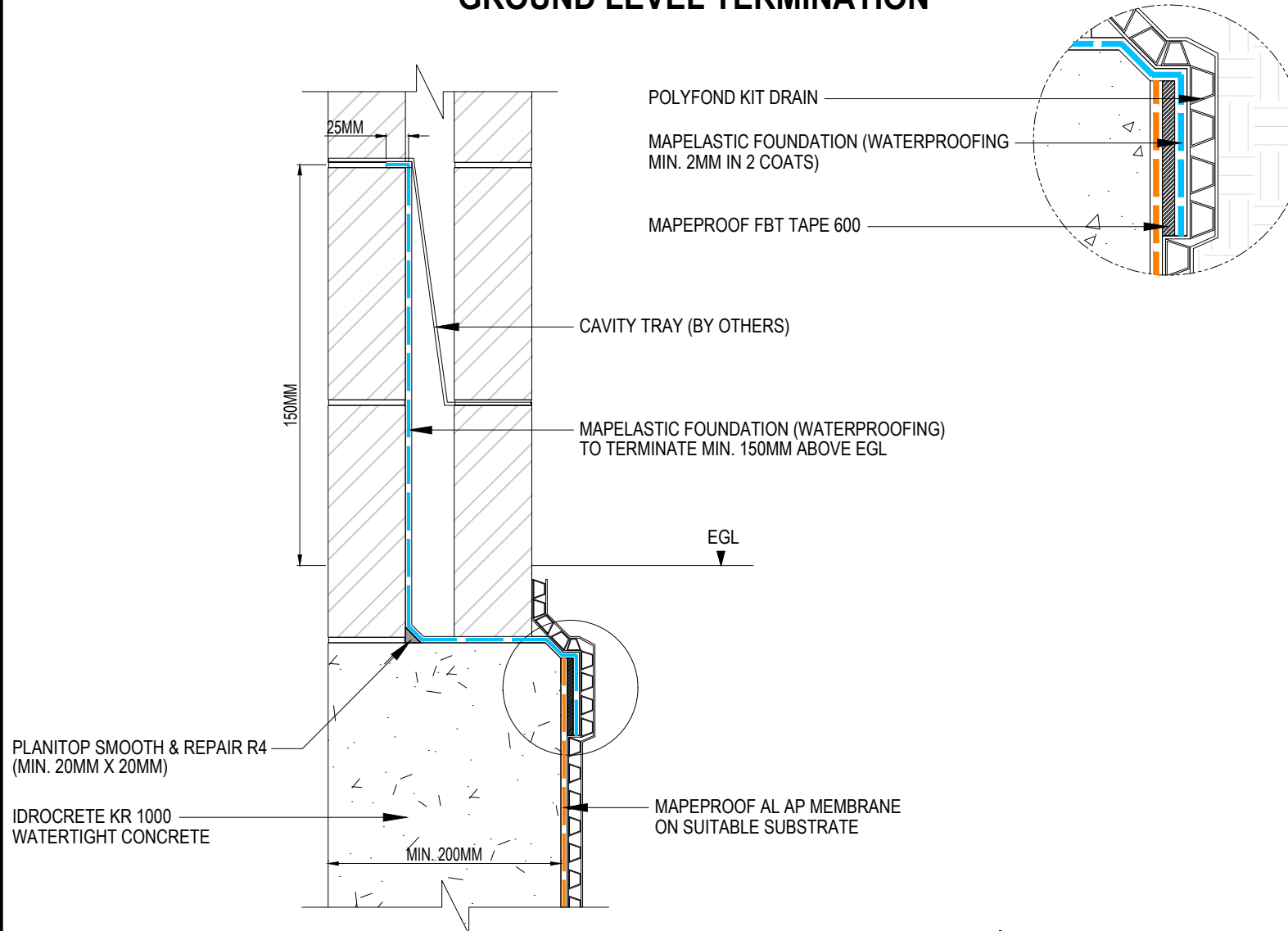


MAPEPROOF AL AP & IDROCRETE KR 1000 WATERTIGHT CONCRETE GROUND LEVEL TERMINATION



Drawing Details:

MAPEPROOF AL AP - Pre-applied, fully bonded, self-adhering, HDPE waterproofing membrane to protect against water underground structures.

MAPELASTIC FOUNDATION - Two-component, flexible cementitious mortar for waterproofing concrete surfaces subject to negative and positive hydraulic lift.

PLANITOP SMOOTH & REPAIR R4 - Quick-setting, fibre-reinforced, compensated-shrinkage, thixotropic cementitious mortar for repairing and smoothing concrete, applied in various thicknesses from 3 to 40 mm in a single layer.

POLYFOND KIT DRAIN - is a protection and drainage system made from high density extruded polyethylene (HDPE) laminated with a polypropylene needle punched nonwoven.

MAPEPROOF FBT TAPE 600 - Adhesive tape to form joints between the upper-facing sides of adjacent membranes in the Mapeproof FBT system.

IDROCRETE KR 1000 - Powdered crystallising admixture for waterproof concrete.

STATUS: APPROVED

Drawing title:
MAPEPROOF AL AP & IDROCRETE KR 1000 WATERTIGHT CONCRETE-
GROUND LEVEL TERMINATION

Drawing Ref: MA112B

Date: 02/10/2023

Drawn by: DB

Checked by: LR

Approved by: ADL



Mapei House, Steel Park Road,
Halesowen, B62 8HD

Website: www.mapei.co.uk
Email: technical-uk@mapei.co.uk