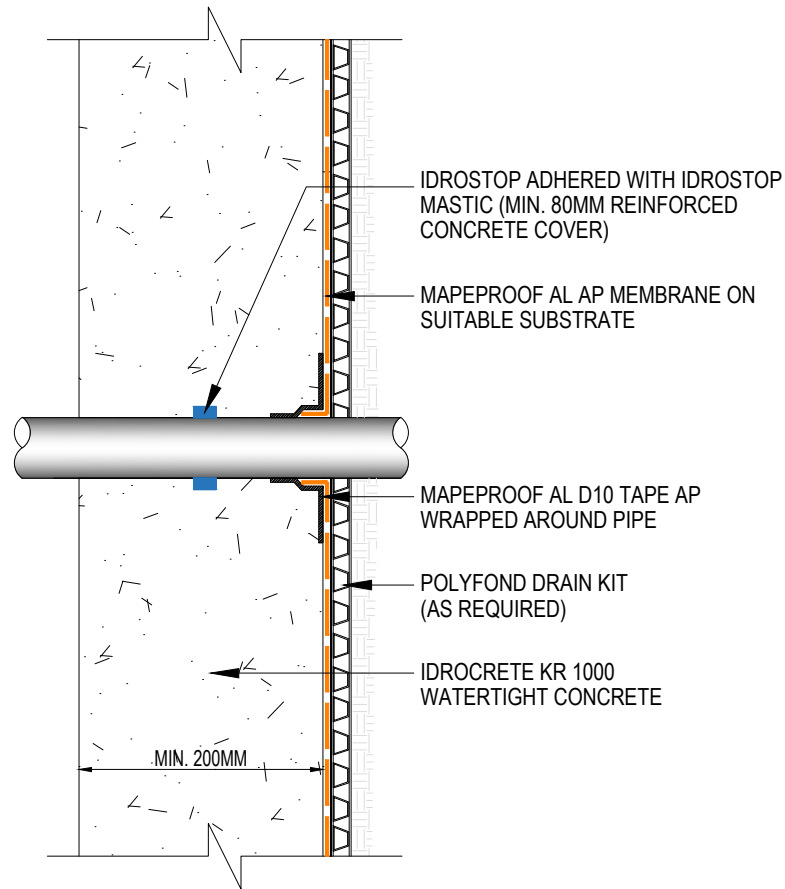
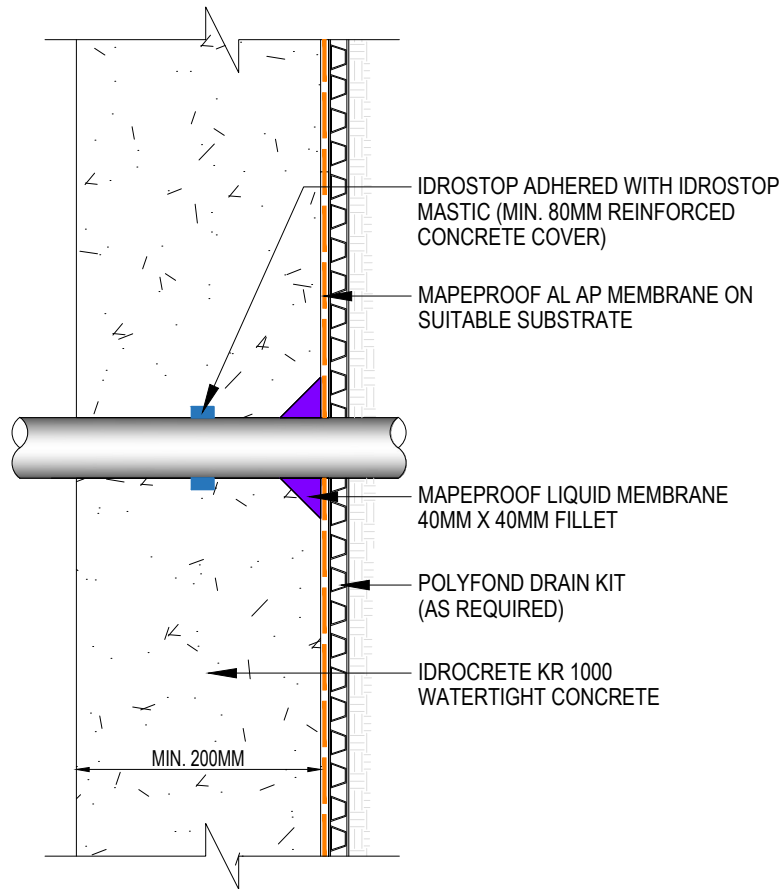


# MAPEPROOF AL AP & IDROCRETE KR 1000 WATERTIGHT CONCRETE PIPE PENETRATION THROUGH RC WALL



## Drawing Details:

MAPEPROOF AL AP - Pre-applied, fully bonded, self-adhering, HDPE waterproofing membrane to protect against water underground structures.

IDROSTOP - Hydrophilic, expanding rubber profiles for waterproof working joints.

IDROSTOP MASTIC - a ready to use solvent-free single component adhesive with a base of MS polymers.

POLYFOND DRAIN KIT - is a protection and drainage system made from high density extruded polyethylene (HDPE) laminated with a polypropylene needle punched nonwoven.

MAPEPROOF LIQUID MEMBRANE - Two component polyurethane elastomeric, thixotropic, liquid waterproofing membrane for sealing, filling, detailing Mapeproof AL AP and Mapeproof AL 1200 AP.

MAPEPROOF AL TAPE D10 AP - Double-sided adhesive tape for jointing, sealing and strengthening the Mapeproof AL AP system.

IDROCRETE KR 1000 - Powdered crystallising admixture for waterproof concrete.

**STATUS:** APPROVED

**Drawing Title:**  
MAPEPROOF AL AP & IDROCRETE KR 1000 WATERTIGHT CONCRETE- PIPE PENETRATION THROUGH RC WALL

**Drawing Ref:** MA113B

**Date:** 02/10/2023

**Drawn by:** DB

**Checked by:** LR

**Approved by:** ADL



Mapei House, Steel Park Road,  
Halesowen, B62 8HD  
Website: [www.mapei.co.uk](http://www.mapei.co.uk)  
Email: [technical-uk@mapei.co.uk](mailto:technical-uk@mapei.co.uk)