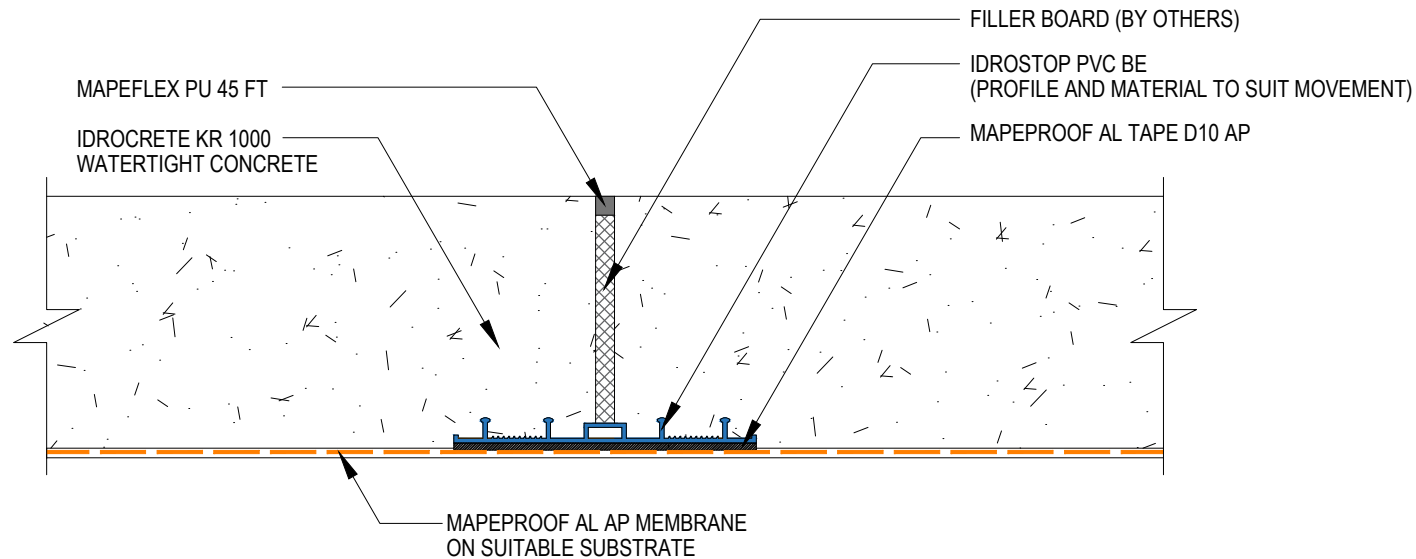


MAPEPROOF AL AP & IDROCRETE KR 1000 WATERTIGHT CONCRETE SLAB EXPANSION JOINT WITH IDROSTOP PVC WATERBAR - WALL & FLOOR JOINT



Drawing Details:

MAPEPROOF AL AP - Pre-applied, fully bonded, self-adhering, HDPE waterproofing membrane to protect against water underground structures.

IDROSTOP PVC WATERBAR - PVC waterstop for sealing expansion and cold joints

MAPEFLEX PU 45 FT - rapid-hardening paintable polyurethane sealant and adhesive with a high modulus of elasticity for movements up to 20%.

MAPEPROOF AL TAPE D10 AP - Double-sided adhesive tape for jointing, sealing and strengthening the Mapeproof AL AP system

IDROCRETE KR 1000 - Powdered crystallising admixture for waterproof concrete.

STATUS: APPROVED

Drawing Title:
MAPEPROOF AL AP & IDROCRETE KR 1000 WATERTIGHT CONCRETE-SLAB EXPANSION JOINT WITH IDROSTOP PVC WATERBAR - WALL & FLOOR JOINT

Drawing Ref: MA117B

Date: 02/10/2023

Drawn by: DB

Checked by: LR

Approved by: ADL



Mapei House, Steel Park Road,
Halesowen, B62 8HD

Website: www.mapei.co.uk
Email: technical-uk@mapei.co.uk