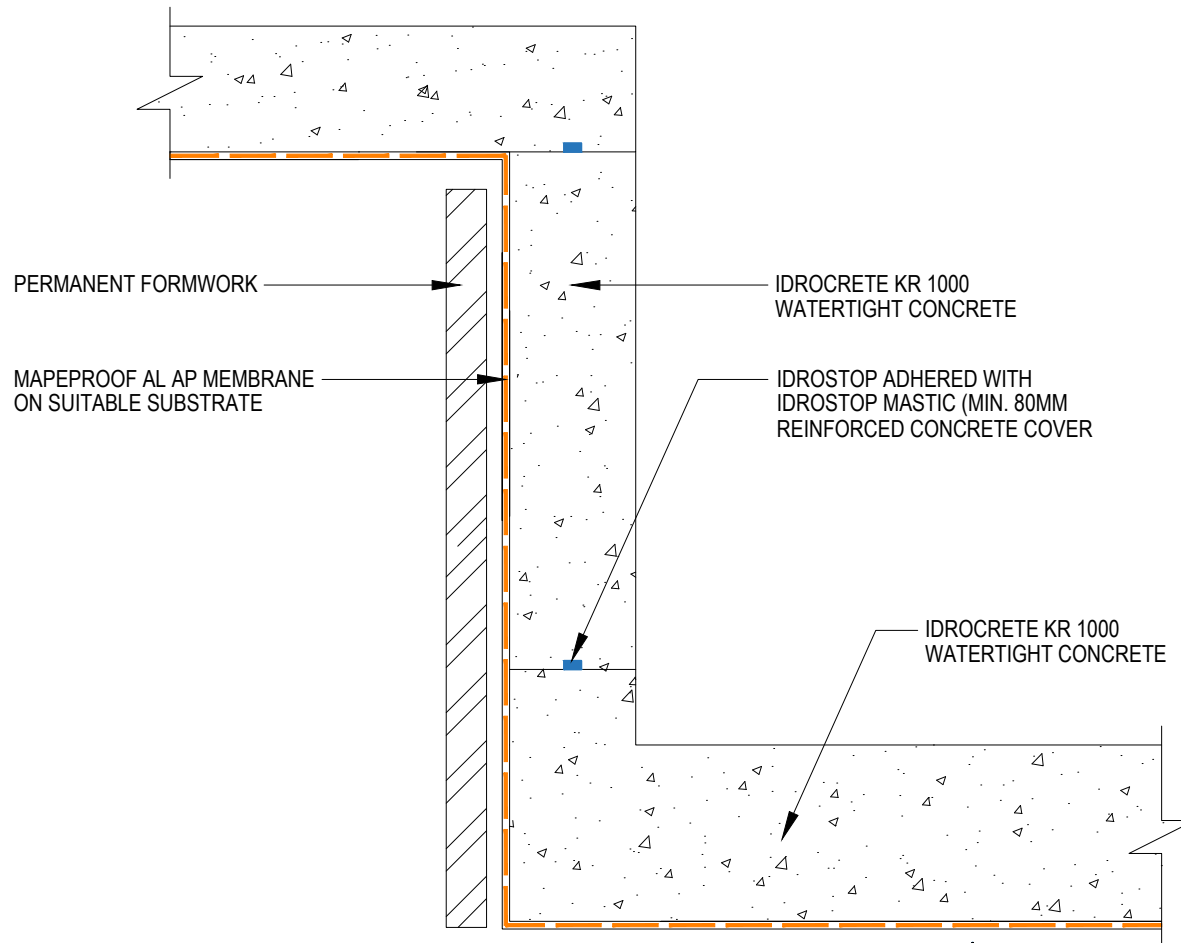


MAPEPROOF AL AP & IDROCRETE KR 1000 WATERTIGHT CONCRETE LIFT PIT



Drawing Details:

MAPEPROOF AL AP - Pre-applied, fully bonded, self-adhering, HDPE waterproofing membrane to protect against water underground structures.

IDROSTOP - Hydrophilic, expanding rubber profiles for waterproof working joints.

IDROSTOP MASTIC - One-component adhesive for laying IDROSTOP.

IDROCRETE KR 1000 - Powdered crystallising admixture for waterproof concrete.

STATUS: APPROVED

Drawing Title:

MAPEPROOF AL AP & IDROCRETE KR 1000 WATERTIGHT CONCRETE-LIFT PIT

Drawing Ref: MA118B

Date: 02/10/2023

Drawn by: DB

Checked by: LR

Approved by: ADL



Mapei House, Steel Park Road,
Halesowen, B62 8HD

Website: www.mapei.co.uk

Email: technical-uk@mapei.co.uk