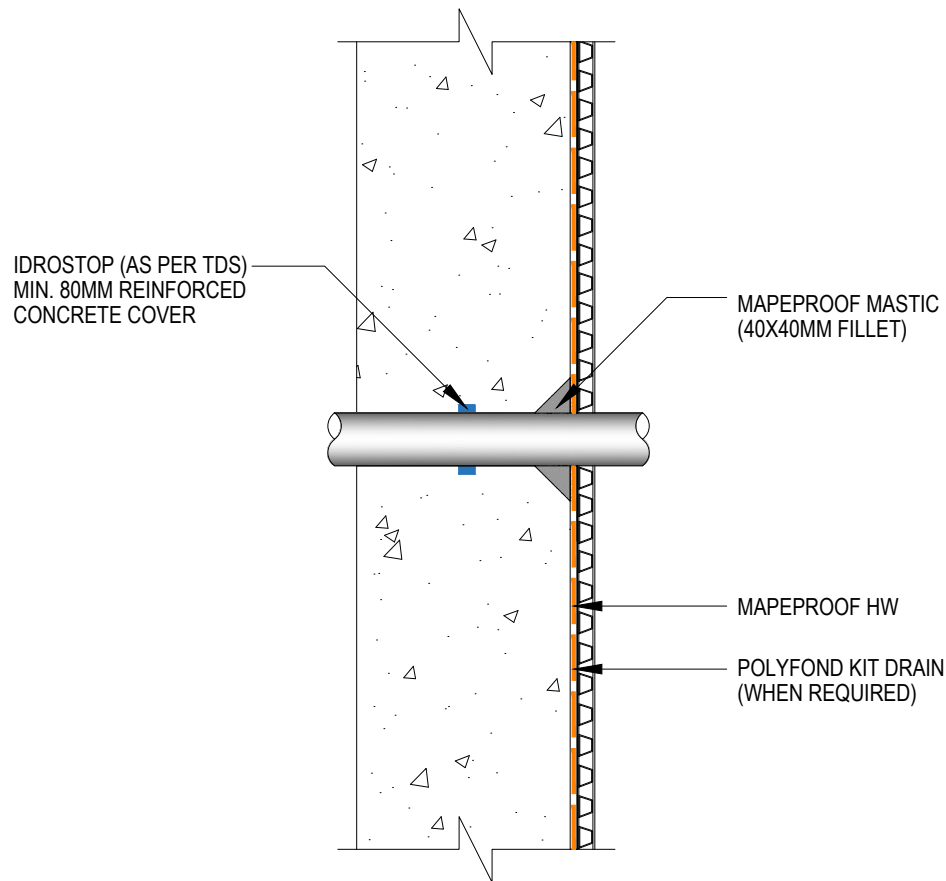


MAPEPROOF HW PIPE THROUGH RC WALL (PRE-APPLIED)



Drawing Details:

MAPEPROOF HW - Bentonite geotextile sheet waterproofing membrane.

MAPEPROOF MASTIC - Bentonite paste made from natural sodium bentonite and plasticising additives for sealing elements which pass through surfaces

POLYFOND KIT DRAIN - is a protection and drainage system made from high density extruded polyethylene (HDPE) laminated with a polypropylene needle punched nonwoven.

IDROSTOP - Hydrophilic, expanding rubber profiles for waterproof working joints.

STATUS: APPROVED

Drawing Title:
MAPEPROOF HW-PIPE THROUGH RC WALL (PRE-APPLIED)

Drawing Ref: MA122B

Date: 31/08/2023

Drawn by: DB

Checked by: LR

Approved by: ADL



Mapei House, Steel Park Road,
Halesowen, B62 8HD
Website: www.mapei.co.uk,
Email: technical-uk@mapei.co.uk