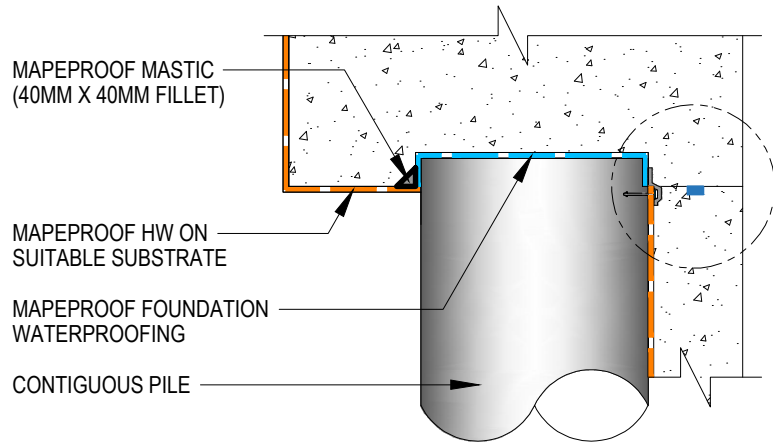
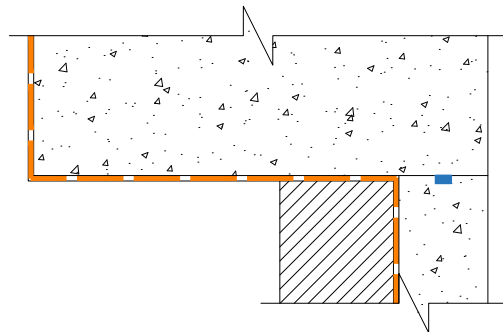


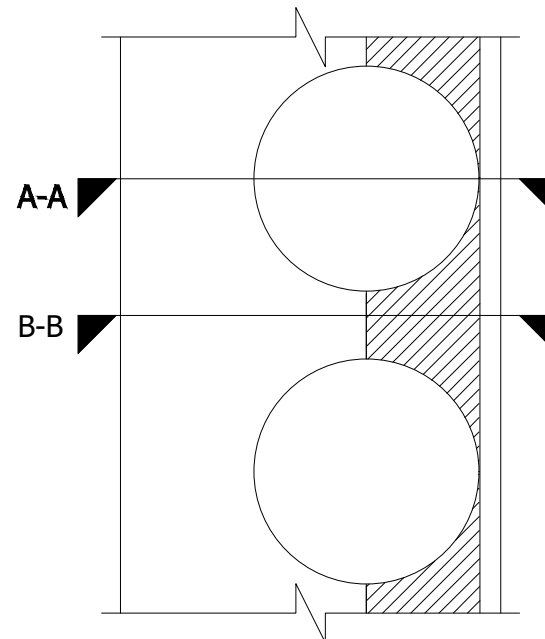
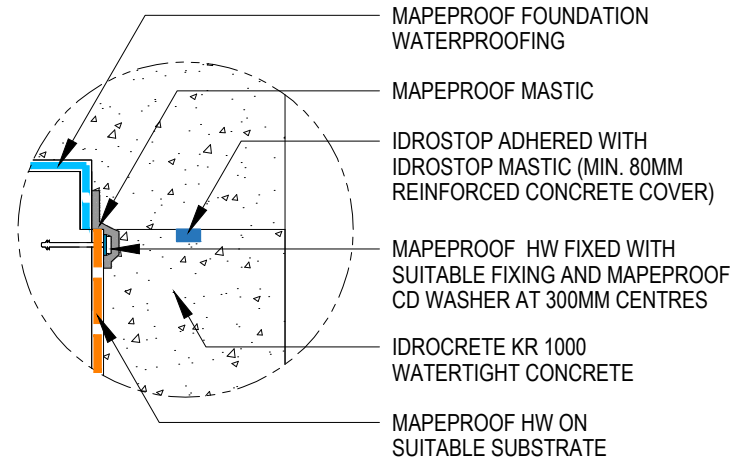
MAPEPROOF HW CONTIGUOUS PILE CAPPING BEAM DETAIL



A-A SECTION BETWEEN PILES



B-B SECTION BETWEEN PILES



Drawing Details:

MAPEPROOF HW - Bentonite geotextile sheet waterproofing membrane.

IDROSTOP - Hydrophilic, expanding rubber profiles for waterproof working joints.

IDROSTOP MASTIC - One-component adhesive for laying IDROSTOP.

MAPEPROOF MASTIC - Bentonite paste made from natural sodium bentonite and plasticising additives for sealing elements which pass through surfaces.

MAPELASTIC FOUNDATION - Two-component, flexible cementitious mortar for waterproofing concrete surfaces subject to negative and positive hydraulic lift.

IDROCRETE KR 1000 - Powdered crystallising admixture for waterproof concrete.

STATUS: APPROVED

Drawing Title: MAPEPROOF HW-ON CONTIGUOUS PILE

Drawing Ref: MA137B

Date: 31/08/2023

Drawn by: DB

Checked by: LR

Approved by: ADL



Mapei House, Steel Park Road,
Halesowen, B62 8HD

Website: www.mapei.co.uk

Email: technical-uk@mapei.co.uk