

SCREEDS AND
SMOOTHING
COMPOUNDS



PRIMERS



ADHESIVES



PRODUCTS
FOR LVT



ACCESSORIES
AND ANCILLARY
PRODUCTS



PRODUCTS FOR THE INSTALLATION OF RESILIENT, LVT AND TEXTILE FLOORINGS

SOFT COVERINGS INSTALLATION SYSTEMS



MAPEI

ADHESIVES - SEALANTS - CHEMICAL PRODUCTS FOR BUILDING

www.mapei.com.jo





SCREEDS AND SMOOTHING COMPOUNDS

Engineered screeds
Sealing cracks and joints
Levelling, smoothing and patching compounds



PRIMERS

Adhesion promoters
Consolidating and/or waterproofing products
Moisture vapour barriers



ADHESIVES

Adhesives in water dispersion
Reactive adhesives
Contact adhesives
Cementitious adhesives
Adhesive tapes



PRODUCTS FOR LVT

Adhesives
Grouts
Ready-to-use grout smoothers
Anti-slip finishes



ACCESSORIES AND ANCILLARY PRODUCTS

Anti-slip finishes
Products for soundproofing
Cleaners
Ancillary products
Accessories

SCREEDS AND SMOOTHING COMPOUNDS

ENGINEERED SCREEDS

Mapecem.....	5
Mapecem Pronto	5
Topcem Pronto	6
Topcem Pronto Slurry	6
Planicrete SP	7

SEALING CRACKS AND JOINTS

Eporip	8
--------------	---

THIXOTROPIC SMOOTHING COMPOUNDS AND PRODUCTS FOR LOCAL REPAIRS

Latex Plus	8
Mapecem Quickpatch	9
Nivorapid	9
Planiprep 4 LVT	10
Planiprep SC	10

LEVELLING COMPOUNDS

Novoplan 21	11
UC Leveller	11
UC Leveller Maxi	12
Ultraplan	12
Ultraplan Eco	13
Ultraplan Fast Track	13
Ultraplan Maxi	14
Ultraplan Renovation	14
Ultraplan Trade	15

PRIMERS

ADHESION PROMOTERS

Eco Prim Grip	19
Eco Prim T Plus	19
Mapeprim SP	20
Primer SN	20

CONSOLIDATING AND MOISTURE VAPOUR BARRIER PRODUCTS

Mapeproof 1K Turbo	21
Primer MF	21

ADHESIVES

ADHESIVES IN WATER DISPERSION

Ultrabond Eco 170.....	25
Ultrabond Eco 380	25
Ultrabond Eco Fast Track	26
Ultrabond Eco Fix.....	26
Ultrabond Eco Tack	27
Ultrabond Eco V4 Evolution.....	27
Ultrabond Eco V4 SP.....	28
Ultrabond Eco V4 SP Conductive	28
Ultrabond Eco V4 SP Fiber	29
Ultrabond Eco VS90 Plus.....	29

REACTIVE ADHESIVES

Adesilex G19.....	30
Ultrabond Eco MS 4 LVT Wall	30

CONTACT ADHESIVES

Ultrabond Eco Contact.....	31
----------------------------	----

ADHESIVE TAPES

Mapecontact	31
-------------------	----

PRODUCTS FOR LVT

ADHESIVES

Ultrabond Eco MS 4 LVT Wall	35
-----------------------------------	----

GROUTS

Flexcolor 4 LVT	35
Kerapoxy 4 LVT.....	36
Kerapoxy Cleaner	36
Spacers 4 LVT.....	37

READY-TO-USE GROUT SMOOTHERS

Planiprep 4 LVT	37
-----------------------	----

ANTI-SLIP FINISHES

Mapecoat 4 LVT	38
----------------------	----

ACCESSORIES AND ANCILLARY PRODUCTS

ANTI-SLIP FINISHES

Mapecoat 4 LVT	41
Mapecoat Wet & Dry R11	41

CLEANERS

Cleaner H	42
Kerapoxy Cleaner	42

ACCESSORIES

Mapei Spray Mop	43
Notched trowels	43
Ultracoat Pad	44
Wale Tale Dust Remover	44
Ultracoat Roller MT8	45
Ultracoat Roller T3	45



SCREEDS AND SMOOTHING COMPOUNDS

Mapecem

DESCRIPTION Special binder for quick-setting and drying (24 hours), controlled-shrinkage screeds.

TECHNICAL DATA

Recommended mixing ratio:

Mix one 20 kg bag with 80 - 100 kg of 0-8 mm graded aggregate. Add 4-8 kg of water according to moisture in the aggregate

Set to light foot traffic: after 2-3 hours.

Waiting time before laying:

- 3 hours for ceramic tiles and stone material;
- 24 hours for resilient and timber flooring.

Residual moisture after 24 hours: less

than 2%.

EMICODE: EC1 R Plus - very low emission.

Storage: 12 months.

Application: tapping and flattening with a straight edge.

Consumption: 3.5-4.5 kg/m² per cm of thickness.

PACKAGING

20 kg bags

PRODUCT CODE: 118120



Fast Track System
Ready

Mapecem Pronto

DESCRIPTION Pre-blended, mortar for ready-to-use, quick-setting and drying (24 hours), controlled-shrinkage screeds.

TECHNICAL DATA

Mixing ratio: 1 x 20 kg bag of MAPECEM PRONTO with approximately 1.5 - 1.7 litres of water.

Workability time: 20-30 minutes.

Set to light foot traffic: after 2-3 hours.

Waiting time before laying:

- 3 hours for ceramic tiles and stone material;
- 24 hours for resilient and timber flooring.

Residual moisture after 24 h.: less than 2%.

EMICODE: EC1 R Plus - very low emission.

Storage: 12 months.

Application: tapping and flattening with a straight edge.

Consumption: 20 kg/m² per cm of thickness.

PACKAGING

20 kg bags

PRODUCT CODE: 118920



Fast Track System
Ready

Topcem Pronto

DESCRIPTION Ready-to-use, normal-setting, controlled-shrinkage mortar with high thermal efficiency for quick-drying (4 days) screeds.

TECHNICAL DATA

Mixing ratio: 1 x 20 kg bag of TOPCEM PRONTO with 1.4 litres of water.

Workability time: 40-60 minutes.

Set to light foot traffic: after 12 hours.

Waiting time before laying: 24 hours for ceramic tiles, 2 days for natural stone and 4 days for resilient and timber flooring.

Residual moisture after 4 days: less than 2%.

EMICODE: EC1 R Plus - very low emission.

Storage: 12 months.

Application: tapping and flattening with a straight edge.

Consumption: 18-20 kg/m² per cm of thickness according to the grade of compacting.

Thermal efficiency: $\lambda = 2,008$ W/mK.

PACKAGING

20 kg bags

PRODUCT CODE: 024320



Topcem Pronto Slurry

DESCRIPTION Bonding slurry prior to the installation of a TOPCEM PRONTO engineered screed

TECHNICAL DATA

Recommended mixing ratio:

Planicrete SP: 2 parts in weight

Topcem Pronto Slurry: 3 parts in weight.

Waiting time before laying:

immediately install the Topcem Pronto screed using the "fresh on fresh" technique.

Residual moisture after 4 days: less than 2%.

EMICODE: EC1 R Plus - very low emission.

Storage: 12 months.

Application: apply by brush or trowel.

Consumption: 2-2.5 kg/m² depending on thickness.

PACKAGING

20 kg bags

PRODUCT CODE: 0243220



Planicrete SP

DESCRIPTION Synthetic rubber latex to improve adhesion and performances of cement mixes and prepare bonding slurries for screeds.

TECHNICAL DATA

Consistency: fluid liquid.

Dry solids content: 36%.

Storage: 24 months.

Consumption:

- for adhesive slurry: 100-150 g/m²;
- to prepare screeds and render: 50-80 kg/m³.

PACKAGING

25 kg drums

PRODUCT CODE: 037725



Eporip

DESCRIPTION Two-component, solvent-free epoxy adhesive for monolithic sealing cracked screeds.

TECHNICAL DATA

Consistency: comp. A: fluid paste; comp. B: fluid paste.
Colours: comp. A: black; comp. B: white.
Mixing ratio: comp. A : comp. B = 3 : 1.
Setting time: 24 hours.
Workability time: 60 minutes.
Open time: 5 hours.
Storage: 24 months.
Application: brush, trowel or by pouring.
Consumption: 1.35 kg/m³.

PACKAGING

2 kg and 10 kg kits
PRODUCT CODE:
152102 Part A 2kg kit
153102 Part B 2kg kit
152110 Part A 10kg kit
153110 Part B 10kg kit



Latex Plus

DESCRIPTION Elasticising latex to be mixed with NIVORAPID.

TECHNICAL DATA

(Nivorapid + Latex Plus)
Pot life of mix: 30 minutes.
Working time of mix: 20 minutes.
Waiting time before grouting: 2-3 hours.
Set to light foot traffic: approx. 2 hours.
Waiting time before bonding: 12-24 hours.
Storage: 24 months.
Consumption:
- Nivorapid + Latex Plus:
NIVORAPID: 1.3-1.5 kg/m² per mm of

thickness;
LATEX PLUS: 0.3-0.5 kg/m² per mm of thickness.

PACKAGING

10 kg drums

PRODUCT CODE: 215110



Mapecem Quickpatch

DESCRIPTION Fast setting smoothing and patching compound for both interior and exterior applications. Ideal for use in elevation changes including ramping. Natural grey colour to blend with existing concrete. Can be primed and covered with a levelling compound after minimum 2 hours.

TECHNICAL DATA

Where to use: internal and external concrete surfaces

Pot life: 20 minutes

Initial setting time: <40 minutes

Final setting time: <1 hour

Curing time: 16 - 24 hours

Waiting time to install

floorcovering: 16 hours

Waiting time to install levelling

compound: 2 hours

Colour: grey

Storage: 12 months

Application: trowel

Consumption: 1.6 kg/m² per mm of thickness

PACKAGING

11.3 kg and 22.7 kg bags

PRODUCT CODE:

1190212 11.3 kg bag

1190223 22.7 kg bag



Nivorapid

DESCRIPTION Quick-drying, thixotropic, cementitious smoothing compound for thicknesses from 1 to 20 mm, including on vertical surfaces. Suitable for local repairs.

TECHNICAL DATA

Where to use: internal floors and walls for ceramic, natural stone, resilient and timber floorings.

Workability time: 15 minutes.

Thickness applied: from 1 to 20 mm.

Set to light foot traffic: approx. 2 hours.

Waiting time before laying: 4-6 hours

for ceramic tiles and natural stone, 6-12 hours for timber and resilient floorings.

Colour: grey.

EMICODE: EC1 R Plus - very low emission.

Storage: 12 months.

Application: metal trowel.

Consumption: 1.6 kg/m² per mm of thickness.

PACKAGING

20 kg bags

PRODUCT CODE:

120120



Planiprep 4 LVT

DESCRIPTION

Ready-to-use grout smoother for LVT.

This product is used to level off and smooth over (down to a feather edge in layers up to 2 mm thick) existing internal ceramic and stone surfaces. It fills joints and gaps between tiles and forms a fine, smooth finish suitable for loose-lay LVT tiles and planks or to be bonded with reactive adhesives, such as ULTRABOND ECO MS 4 LVT WALL very quickly (after 2 hours).

TECHNICAL DATA

Where to use: internal floors and walls for loose-lay LVT.

Consistency: thick paste.

Colour: white.

Thickness applied: 0-2 mm (up to 3-4 mm in gaps and joints).

Set to light foot traffic: approx. 1 hour.

Waiting time before sanding and

applying LVT: approx. 2 hours.

EMICODE: EC1 Plus - very low emission.

Storage: 12 months.

Application: trowel.

Consumption: 80-100 g/m².

PACKAGING

10 kg drums

PRODUCT CODE: 7347210



Planiprep SC

DESCRIPTION

High performance polymer-modified, fibre-reinforced cement-based skimcoating and patching compound. Ideal to skimcoat and smooth minor surface variations and defects on common surfaces. Natural grey colour to blend with existing concrete.

TECHNICAL DATA

Where to use: internal common surfaces

Pot life: 16 - 22 minutes

Initial setting time: 20 - 30 minutes

Final setting time: 30 - 90 minutes

Waiting time to install

floorcovering: 30 - 60 minutes

Suitable substrates: concrete and approved timber subfloors/underlayments

Colour: grey

Storage: 12 months

Application: trowel

Consumption: 1.6 kg/m² per mm of thickness

PACKAGING

4.5 kg Alupak bag inside a bucket

PRODUCT CODE: 7346401



Novoplan 21

DESCRIPTION Fast hardening levelling and smoothing compound used in interiors on new and existing substrates prior to the installation of carpet, vinyl or ceramics where resistance to heavy loads and traffic is required. For use on concrete slabs and cement-based screeds, existing ceramic tiles, terrazzo and natural stone floors. Strong enough to withstand wheel traffic and can be applied in thicknesses up to 10mm per single coat.

TECHNICAL DATA

Where to use: internal floors for ceramic, natural stone, resilient and engineered timber flooring.

Workability time: 20-30 minutes.

Thickness applied: from 1 to 10 mm.

Set to light foot traffic: approx.

3-4 hours.

Waiting time before laying: 24 hours

Application: trowel, squeegee or pump.

EMICODE: EC1 R Plus - very low emission.

Colour: grey.

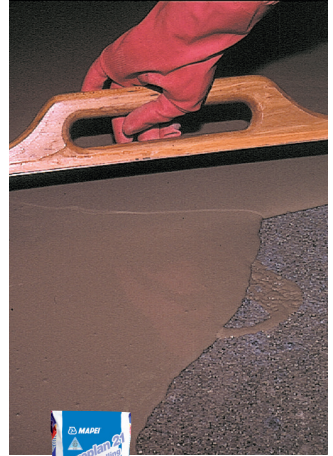
Storage: 12 months.

Consumption: 1.6 kg/m² per mm of thickness.

PACKAGING

20 kg bags

PRODUCT CODE: 273120



UC Leveller

DESCRIPTION Fast hardening levelling smoothing compound for thicknesses from 3 mm to 70 mm. Especially recommended for pumping. Can be used in interiors as a bulk-filling underlayment compound. Smoothing for underfloor heating systems. When mixed with water, UC Leveller becomes a very fluid, easy to apply mix that has excellent self-levelling properties and cures rapidly. Flooring can be installed after approximately 24-48 hours.

TECHNICAL DATA

Where to use: internal floors for ceramic, natural stone.

Workability time: 20-30 minutes.

Thickness applied: from 3 to 70 mm.

Set to light foot traffic: approx.

12 hours.

Waiting time before laying: 24 hours

Application: trowel, squeegee or pump.

EMICODE: EC1 R Plus - very low emission.

Colour: pinky grey.

Storage: 12 months.

Consumption: 1.6 kg/m² per mm of thickness..

PACKAGING

20 kg bags

PRODUCT CODE: 034620



UC Leveller Maxi COMING SOON

DESCRIPTION Fast hardening levelling smoothing compound for thicknesses from 10 mm to 100 mm. Especially recommended for pumping. Used in interiors as a bulk-filling underlayment compound. Smoothing for underfloor heating systems. When mixed with water, **UC Leveller Maxi** becomes a very fluid, easy to apply mix that has excellent self-levelling properties and cures rapidly. Flooring can be installed after approximately 24-72 hours.

TECHNICAL DATA

Where to use: internal floors for ceramic, natural stone, resilient and timber flooring.

Workability time: 20-30 minutes.

Thickness applied: from 10 to 100 mm.

Set to light foot traffic: approx. 12 hours.

Waiting time before laying: 72 hours

Application: trowel, squeegee or pump.

EMICODE: EC1 R Plus - very low emission.

Colour: grey.

Storage: 12 months.

Consumption: 1.8 kg/m² per mm of thickness..

PACKAGING

20 kg bags

PRODUCT CODE: 0346120



Ultraplan

DESCRIPTION Self-levelling, ultra quick-hardening smoothing compound for thicknesses from 1 to 15 mm.

TECHNICAL DATA:

Where to use: internal floors for ceramic, natural stone, resilient and timber flooring.

Workability time: 20-30 minutes.

Thickness applied: from 1 to 15 mm.

Set to light foot traffic: approx. 3 hours.

Waiting time before laying: 3-4 hours for stable and not sensitive to moisture ceramic tiles and natural stone, 12 hours for resilient and timber flooring.

Application: trowel, squeegee or pump.

EMICODE: EC1 R Plus - very low emission.

Colour: grey.

Storage: 12 months.

Consumption: 1.6 kg/m² per mm of thickness.

PACKAGING

20 kg bags

PRODUCT CODE: 034820



www.blauer-engel.de/uz113



Ultraplan Eco

DESCRIPTION Self-levelling, ultra quick-hardening smoothing compound for thicknesses from 1 to 10 mm.

TECHNICAL DATA

Where to use: internal floors for ceramic, natural stone, resilient and wooden coatings.

Workability time: 20-30 minutes.

Thickness applied: from 1 to 10 mm.

Set to light foot traffic: approx. 3 hours.

Waiting time before laying: 3-4 hours for stable and not sensitive to moisture ceramic tiles and natural stone, 12 hours for resilient and wood coverings.

Application: trowel, squeegee or pump.

EMICODE: EC1 R Plus - very low emission.

Colour: grey.

Storage: 12 months.

Consumption: 1.6 kg/m² per mm of thickness.

PACKAGING

20 kg bags

PRODUCT CODE: 149520



www.blauer-engel.de/uz113



Ultraplan Fast Track

DESCRIPTION Ultra-fast drying self-levelling compound for thicknesses from 1 to 10 mm. It is suitable for restoring resilient floor which have to be ready for use in quick times.

TECHNICAL DATA

Consistency: fine powder.

Where to use: internal floors, for resilient and timber flooring.

Pot life: 10-15 minutes.

Thickness applied: 1-10 mm.

Set to light foot traffic: approx. 1 hour.

Waiting time before bonding flooring: 2 hours for ceramic tiles, natural stone, resilient and timber flooring.

Application: trowel or squeegee.

EMICODE: EC1 R Plus - very low emission.

Colour: grey.

Storage: 12 months.

Consumption: 1.6 kg/m² per mm of thickness.

PACKAGING

20 kg bags

PRODUCT CODE: 0124220



www.blauer-engel.de/uz113



Ultraplan Maxi

DESCRIPTION Self-levelling, ultra quick-hardening smoothing compound for thicknesses from 3 to 40 mm.

TECHNICAL DATA

Where to use: internal floors for ceramic, natural stone, resilient and timber flooring.

Workability time: 30-40 minutes.

Thickness applied: from 3 to 40 mm.

Set to light foot traffic: approx. 3-12 hours (depending on thickness).

Waiting time before laying: from 3-4 to 12 hours for stable and not sensitive to moisture ceramic tiles and natural stone, from 12 to 72 hours for resilient and timber flooring (depending on

thickness).

Application: trowel or pump.

EMICODE: EC1 R Plus - very low emission.

Colour: grey.

Storage: 12 months.

Consumption: 1.7 kg/m² per mm of thickness.

PACKAGING

20 kg bags

PRODUCT CODE: 149120



Ultraplan Renovation

DESCRIPTION Self-levelling fibre-reinforced rapid-hardening smoothing compound applied in layers 3 to 40 mm thick. Particularly suitable for levelling off existing substrates, even wooden substrates.

TECHNICAL DATA

Areas of use: internal floors for installing ceramic, stone, resilient and timber flooring.

Workability time: 30-40 minutes.

Thickness applied: 3 to 40 mm.

Set to light foot traffic: approx. 3-12 hours (depending on thickness).

Waiting time before installation: from 3-4 to 12 hours for ceramic and stable and not sensitive to moisture stone; from 12 to 72 hours for resilient and timber flooring (depending on

thickness).

Application: spreader or pump.

EMICODE: EC1 R Plus - very low emission.

Colour: grey.

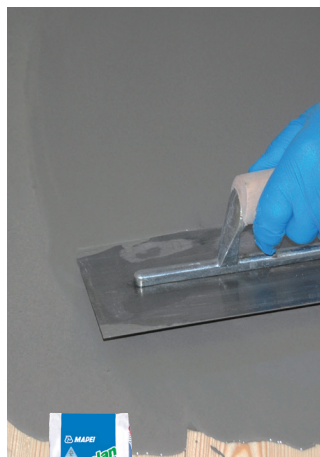
Storage: 12 months.

Consumption: 1.8 kg/m² per mm of thickness.

PACKAGING

20 kg bags

PRODUCT CODE: 0124320



Ultraplan Trade

DESCRIPTION

Fast drying interior levelling and smoothing compound from 3 to 40 mm per pour. Specifically formulated for interior use by trade professionals. For thicknesses greater than 40 mm, it is recommended to add up to 50% of graded aggregate from 2 - 5 mm.

TECHNICAL DATA

Where to use: internal floors for ceramic, natural stone, resilient and timber flooring.

Workability time: 20-30 minutes.

Thickness applied: from 3 to 40 mm.

Set to light foot traffic: approx. 3-12 hours (depending on thickness).

Waiting time before laying: from 3 to 12 hours for stable and not sensitive to moisture ceramic tiles and natural stone, from 12 to 72 hours for resilient and timber flooring (depending on

thickness).

Application: trowel or pump.
EMICODE: EC1 R Plus - very low emission.

Colour: grey.

Storage: 12 months.

Consumption: 1.7 kg/m² per mm of thickness.

PACKAGING

20 kg bags

PRODUCT CODE: 149420



SELECTION CHART

Products	Thickness	Application					
		Internal areas	External areas/damp areas	Engineered screeds	Underfloor heating	Concrete	Cement fibre-boards

SELF-LEVELLING COMPOUNDS

UC LEVELLER	3 - 70 mm	•		•	•	•	
UC LEVELLER MAXI	10 - 100 mm	•		•	•	•	
ULTRAPLAN	1 - 15 mm	•		•	•	•	
ULTRAPLAN ECO	1 - 10 mm	•		•	•	•	
ULTRAPLAN FAST TRACK	1 - 10 mm (2)	•		•	•	•	
ULTRAPLAN MAXI	3 - 40 mm	•		•	•	•	
ULTRAPLAN RENOVATION	3 - 40 mm	•		•	•	•	•
ULTRAPLAN TRADE	3 - 40 mm	•		•	•	•	

THIXOTROPIC SMOOTHING COMPOUNDS

MAPECEM QUICKPATCH	1.5 - 38 mm (1)	•	•	•	•	•	
NIVORAPID	1 - 20 mm	•		•	•	•	
NIVORAPID + LATEX PLUS	1 - 20 mm	•		•	•	•	•
PLANIPREP 4 LVT	0 - 2 mm	•				•	
PLANIPREP SC	0 - 25 mm	•		•	•	•	•

(1) In case of higher thicknesses (up to 75 mm), add 30% by weight of 10 mm quartz

(2) In case of higher thicknesses (up to 20 mm), add 30% by weight of 0.4 mm-0.8 mm quartz

NOTE: For the priming and preparation of the substrates, please refer to the technical data sheet of the respective product and also refer to the MAPEI Surface Preparation Requirements for Floor Covering Installation Systems available for download from the website at www.mapei.com.au

Substrates						Classification according to EN 13813	Waiting time		
Gypsum fibre-boards	Ceramic, natural stone and terrazzo	Parquet, chipboard, marine plywood, OSB panels, wood based boards	Metal and resin surfaces	Cement-based plasters	Plasterboard		Set to light foot traffic	Installation of resilient, timber and other floor and wall coverings sensitive to humidity	Installation of ceramic tiles
	•					CT C25 F7	12 h	24 - 48 h	24 - 48 h
	•					CT C35 F7 A _{2-FL} - sI	12 h	24 - 72 h	24 - 72 h
	•					CT C30 F7 A _{2-FL} - sI	3 h	12 h	3 - 4 h
	•					CT C25 F7 A _{2-FL} - sI	3 h	12 h	3 - 4 h
	•					CT C40 F7 A _{2-FL} - sI	1 h	2 h	1 h
	•					CT C35 F7 A _{2-FL} - sI	3 - 12 h	12 - 72 h	3 - 12 h
•	•	•				CT C25 F6 A _{1-FL} - sI	3 - 12 h	12 - 72 h	3 - 12 h
	•					CT C25 F5 E	3 h	24 - 72 h	3 - 12 h
							1 h	16 h	1.5 h
	•			•	•	CT C40 F10 A _{2-FL} - sI	2 h	12 h	4 - 6 h
•	•	•	•	•	•	CT C40 F10 A _{2-FL}	2 h	12 h	4 - 6 h
•	•		•				1 h	2 h	/
•	•				•		1 h	2 h	/



PRIMERS

Eco Prim Grip

DESCRIPTION Ready-to-use primer made from synthetic acrylic resin and silica sand with a very low emission level of volatile organic compounds (VOC) for not absorbent substrates. Ideal for use as a bonding agent for cement renders, levelling compounds and

TECHNICAL DATA

Consistency: creamy liquid.

Colour: grey.

Waiting time before applying render: 15-20 minutes.

Waiting time before applying smoothing compounds: 30 minutes.

EMICODE: EC1 Plus - very low emission.

Storage: 12 months.

Application: roller or brush.

Consumption: 0.20-0.30 kg/m².

PACKAGING

5 kg and 10 kg drums

PRODUCT CODE:

1560005 5 kg drum

1560010 10 kg drum



Fast Track System
Ready

Eco Prim T Plus

DESCRIPTION Solvent free, acrylic primer in water dispersion with very low emission of volatile organic compounds (VOC) for absorbent and non-absorbent substrates also with residual of old adhesives. Suitable also as adhesion promoter for levelling compounds onto substrates threated with epoxy or polyurethane primers.

TECHNICAL DATA

Consistency: liquid.

Colour: light blue.

Dilution rate: undiluted on non-absorbent substrates, 1:1 or 1:2 on absorbent substrates.

Waiting time before applying the adhesive or the smoothing compound over: from 2 to 5 hours depending on the surrounding conditions and the absorbency of the substrate.

EMICODE: EC1 Plus - very low emission.

Storage: 24 months.

Application: with a brush or a roller.

Consumption: 0.10-0.20 kg/m².

PACKAGING

5 kg and 20 kg buckets

PRODUCT CODE:

1558205 5 kg drum

1558205 20 kg drum



Fast Track System
Ready



www.blauer-engel.de/uz113



Mapeprim SP

DESCRIPTION Synthetic resin-based primer to improve the adhesion of levelling compounds and cementitious adhesives on non-absorbent and difficult substrates.

TECHNICAL DATA

Pot life: approx 3 hours

Drying time: 1-3 hours*

Application temperature: from +5°C - +40°C

Colour: light blue

Shelf life: 12 months

Packaging: 2 x 2kg buckets = 4kg kit

Consumption: 0.10 - 0.20 kg/m²

VOC content: 12.6 g/l

PACKAGING

4 kg kits

PRODUCT CODE:

154102 2kg drum Part A

155102 2kg drum Part B



Primer SN

DESCRIPTION Two-component fillerised epoxy resin-based primer specifically formulated to treat concrete surfaces prior to the installation of resin and cementitious systems.

TECHNICAL DATA

Colour: neutral.

Consistency: viscous fluid.

Mixing ratio: component A :

component B = 80 : 20.

Pot life: 30 min.

Set to light foot traffic at +23°C and

50% R.H.: 24 hours.

Storage: 24 months.

Application: roller, metal trowel or smooth rake.

Consumption: 0.3-0.7 kg/m² per coat, depending on the absorbency and characteristics of the substrate.

PACKAGING

20 kg kits (A+B)

PRODUCT CODE:

021520 Part A

021620 Part B



Maapeproof 1K Turbo

DESCRIPTION Moisture vapour barrier for cement-based substrates that are not subject to rising damp, but have a relative humidity content higher than the Australian Standard up to 95% RH (ASTM F2170 as per AS 1884-2012).

TECHNICAL DATA

Consistency: liquid.
Colour: brown.
Set to light foot traffic: 60 minutes
Final hardening time: after 2 hours
Waiting time between each coat:
 min 40 mins - max 2 hrs
Application temperature: from +5°C
 to +35°C
Application: roller, brush or flat trowel
Consumption: 0.2 - 0.4 kg/m² per coat

PACKAGING

10 kg drums

PRODUCT CODE: 233210M



Primer MF

DESCRIPTION Two-component, solvent-free 100% solid epoxy primer for consolidating and waterproofing cementitious substrates. Application prior to the installation of flooring sensitive to moisture and to alleviate moisture related problems of concrete or cementitious screeds. Can be applied to substrates up to 100% RH.

TECHNICAL DATA

Consistency: liquid.
Colour: transparent.
Mixing ratio: comp. A : comp. B = 3 : 1.
Application for consolidating: min 2 coats - 3 hours between each coat.
Application as a moisture vapour barrier: apply continuous layer in constant thickness - 2 coats may be required
Workability time: 60 minutes at 23°C.
Storage: 24 months.
Application: roller, brush or flat trowel.
Consumption: 0.20-0.40 kg/m².

PACKAGING

4 kg Kit (Parts A 3kg + B 1kg)
 6 kg Kit (Parts A 4.5kg + B 1.5kg)

PRODUCT CODES:

241106 Part A 4.5kg
 241506 Part B 1.5kg
 241106B 6kg Kit

241104 Part A 3kg
 241504 Part B 1kg
 241104B 4kg Kit



SELECTION CHART

Products	Chemical nature	Components	Substrates			Bonding promoter
			Absorbent surfaces	Non-absorbent surfaces	Timber/ particle Board	
ECO PRIM GRIP #	acrylic primer in water dispersion with silica sand	1	•	•	•	•
ECO PRIM T PLUS	acrylic primer in water dispersion	1	•	•		•
MAPEPRIM SP	resin based primer in water dispersion	2	•	•		•
MAPEPROOF 1K TURBO	moisture curing polyurethane moisture vapour barrier	1	•			
PRIMER MF	epoxy moisture vapour barrier	2	•	•		
PRIMER SN	fillerised epoxy primer	2	•	•		•

ECO PRIM GRIP is not recommended for use on concrete surfaces - instead use ECO PRIM T PLUS (refer Technical Data Sheet)

- (1) Must be covered/primed with ECO PRIM T PLUS undiluted
- (2) Must be fully broadcast with QUARTZ 0.9 while PRIMER SN is still wet

Function		Dilution	Coats	Waiting time before applying smoothing compounds or before other applications (+23°C, 50% R.H.)
Consolidating	Max moisture control			
		NO	1	30 - 60 min
		up to 1:2 with water undiluted over ceramic and stone	1	2 - 5 hours
		up to 5-10% with water	1	1 - 3 hours
•	95% RH	NO	1 - 2	2 hours (1)
•	100% RH	NO	1 - 2	6-10 hours (1)
		NO	1	24 hours (2)



ADHESIVES

Ultrabond Eco 170

DESCRIPTION Adhesive with high initial tack and long open time, for textile floorings. Especially suitable for the installation of dual bond carpet.

TECHNICAL DATA

Consistency: creamy paste.

Colour: light beige.

Waiting time: 10-20 minutes.

Open time: 20-30 minutes.

Set to light foot traffic: approximately 3-5 hours.

Ready for use: after 24-48 hours.

EMICODE: EC1 Plus - very low emission.

Storage: 12 months. Protect from frost.

Application: V3 trowel

Consumption: 300-450 g/m².

PACKAGING

16 kg drums

PRODUCT CODE: 1946516



www.blauer-engel.de/uz113



Ultrabond Eco 380

DESCRIPTION Adhesive with strong and fast initial tack, very long open time for vinyl sheet flooring.

TECHNICAL DATA

Consistency: creamy paste.

Colour: light beige.

Waiting time: 10-20 minutes.

Open time: 60-70 minutes.

Set to light foot traffic: 3-4 hours.

Ready for use: 24-48 hours.

Storage: 12 months. Protect from frost.

Application: V1 trowel

Consumption: 200-300 g/m².

PACKAGING

16 kg drums

PRODUCT CODE: 1943416



Ultrabond Eco Fast Track

DESCRIPTION Fast set, universal adhesive quick renovation of resilient floor coverings and for installing, coves and stairs.

TECHNICAL DATA

Consistency: creamy paste.

Colour: beige.

Waiting time: 5-10 minutes.

Open time: 15 minutes.

Set to light foot traffic: 1 hour.

Ready to use: 12 hours.

EMICODE: EC1 - very low emission.

Storage: 12 months. Protect from frost.

Application: U1, V1, V2 or V3 depending on covering type.

Consumption: 200-400 g/m².

PACKAGING

5 kg drums

PRODUCT CODE: 0666407



Fast Track System
Ready



PVC, NON-PVC, LVT
RUBBER, TEXTILES, LINOLEUM



MAPEI N. 1, 2, 3
TKB A1, A2, B1, B2



Ultrabond Eco Fix

DESCRIPTION Pressure sensitive adhesive in water dispersion which remains permanently tacky for loose lay flooring tiles.

TECHNICAL DATA

Consistency: creamy paste.

Colour: light beige.

Waiting time: 30 minutes - 12 hours.

Set to light foot traffic: immediately after laying.

Ready for use: immediately after laying.

EMICODE: EC1 Plus - very low emission.

Storage: 12 months. Protect from frost.

Application: U1, V1 or roller.

Consumption: 80-150 g/m².

PACKAGING

10 kg drums

PRODUCT CODE: 358010U



Fast Track System
Ready



LOOSE-LAY RESILIENT AND
TEXTILE FLOORINGS



MAPEI N. 1
TKB A1, A4 - ROLLER



Ultrabond Eco Tack

DESCRIPTION Anti-slide tackifier with high residual tack for textile loose-lay tiles.

TECHNICAL DATA

Consistency: liquid.

Colour: light beige.

Waiting time: 30 minutes (max. 12 hours).

Set to light foot traffic: immediately after laying.

Ready for use: immediately after laying.

EMICODE: EC1 Plus - very low emission.

Storage: 12 months.

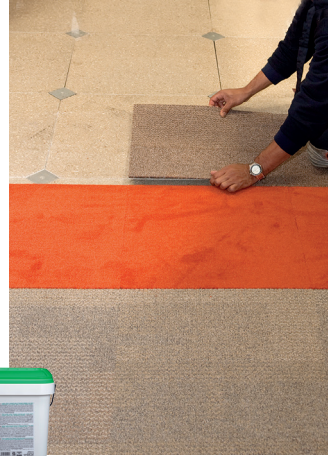
Application: by roller.

Consumption: 100-200 g/m².

PACKAGING

15 kg drums

PRODUCT CODE: 358215



Ultrabond Eco V4 Evolution

DESCRIPTION "All in one" universal adhesive with strong, rapid initial tack and long open time for resilient and textile floor and wall-coverings.

TECHNICAL DATA

Consistency: creamy paste.

Colour: light beige.

Waiting time: 10-20 minutes (30-40 minutes on low/non-absorbent substrates).

Open time: 60-70 minutes (up to 120 minutes on non-absorbent substrates).

Set to light foot traffic: 3-5 hours.

Ready for service: 24-48 hours.

EMICODE: EC1 Plus - very low emission.

Storage: 12 months. Protect from frost.

Application: U1, V1, V2, V3 or roller depending on covering type.
Consumption: 200-450 g/m².

PACKAGING

16 kg bucket

PRODUCT CODE: 0672116



www.blauer-enge.de/uz113



Ultrabond Eco V4 SP

DESCRIPTION Universal, high-performance adhesive for laying resilient and carpet flooring and covering.

TECHNICAL DATA

Consistency: creamy paste.

Colour: light beige.

Waiting time: 10-20 minutes

(30-40 minutes on low/non-absorbent substrates).

Open time: 30-40 minutes.

Set to light foot traffic: 3-5 hours.

Ready for use: 24-48 hours.

EMICODE: EC1 Plus - very low emission.

Storage: 12 months. Protect from frost.

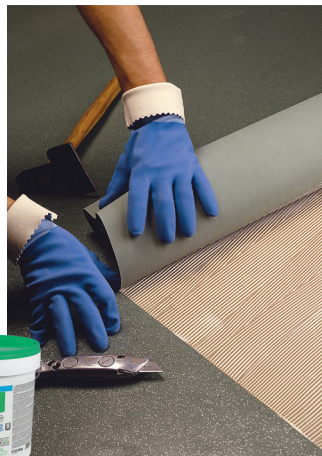
Application: U1, V1, V2, V3 or roller depending on covering type.

Consumption: 200-450 g/m².

PACKAGING

16 kg bucket

PRODUCT CODE: 067216



www.blauer-engel.de/uz113



PVC, NON-PVC, LVT, PO, PU
RUBBER, TEXTILES, LINOLEUM



MAPEI N. 1, 2, 3
TKB A1, A2, B1, B2



Ultrabond Eco V4 SP Conductive

DESCRIPTION Light-coloured adhesive for installing conductive floorings.

TECHNICAL DATA

Consistency: creamy paste.

Colour: light grey.

Waiting time: 0-10 minutes.

Open time: 15 minutes.

Set to light foot traffic: 3-5 hours.

Ready for use: 48-72 hours.

Electrical resistance: 100,000 ohm.

EMICODE: EC1 Plus - very low emission.

Storage: 12 months. Protect from frost.

Application: V1, V2 or V3 trowel depending on covering type.

Consumption: 300-400 g/m².

PACKAGING

16 kg drums

PRODUCT CODE: 066116



www.blauer-engel.de/uz113

Ultrabond Eco V4 SP Fiber

DESCRIPTION High-performance, universal, fibre-reinforced adhesive for resilient and textile floorings.

TECHNICAL DATA

Consistency: creamy paste.

Colour: light beige.

Waiting time: 0-10 minutes.

Open time: 20-30 minutes.

Set to light foot traffic: 3-5 hours.

Ready for use: 24-48 hours.

EMICODE: EC1 Plus - very low emission.

Storage: 12 months. Protect from frost.

Application: V1, V2 or V3 depending on covering type.

Consumption: 200-450 g/m².

PACKAGING

16 kg drums

PRODUCT CODE: 067316



www.blauer-engeLde/uz113



PVC, NON-PVC, LVT, PO, PU
RUBBER, TEXTILES, LINOLEUM



MAPEI N. 1, 2, 3
TKB A1, A2, B1, B2



Ultrabond Eco VS90 Plus

DESCRIPTION High temperature universal hard-set adhesive for resilient and textile floorings.

TECHNICAL DATA

Consistency: creamy paste.

Colour: beige.

Waiting time: 0-10 minutes.

Open time: 20-30 minutes.

Set to light foot traffic: 3-5 hours.

Ready to use: 24-48 hours.

EMICODE: EC1 Plus - very low emission.

Storage: 12 months. Protect from frost.

Application: V1, V2 or V3 depending on covering type.

Consumption: 200-450 g/m².

PACKAGING

16 kg drums

PRODUCT CODE: 0657116



www.blauer-engeLde/uz113



PVC, NON-PVC, LVT, PO, PU
RUBBER, TEXTILES, LINOLEUM



MAPEI N. 1, 2, 3
TKB A1, A2, B1, B2



Adesilex G19

DESCRIPTION Two-component, epoxy-polyurethane adhesive for resilient and textile flooring on internal and external absorbent and non-absorbent substrates. Specifically developed for the installation of rubber athletic tracks.

TECHNICAL DATA

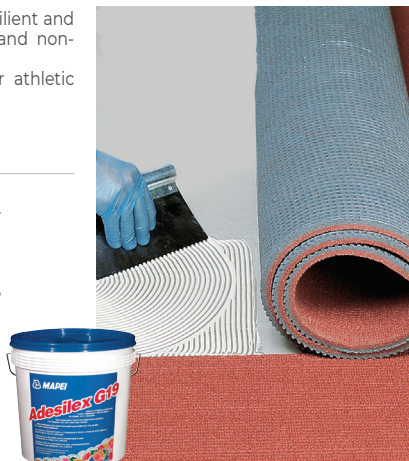
Consistency: comp. A: thick paste; comp. B: fluid liquid.
Colour: comp. A: beige, red, green and black; comp. B: transparent.
Mixing ratio: comp. A: comp. B = 94 : 6.
Pot life of mix: 50-60 minutes.
Setting time: 9 hours.
Set to light foot traffic: 12-24 hours.
Ready for use: 3 days.
Storage: 24 months.
Application: U1, V1, V2 or V3 depending on covering type.

Consumption: 350-1000 g/m².

PACKAGING

5 kg drums

PRODUCT CODE: 410306



PVC, NON-PVC, LVT
RUBBER, TEXTILES, LINOLEUM



MAPEI N. 1, 2, 3, 4
TKB A1, A2, B1, B2, C1



Ultrabond Eco MS 4 LVT Wall

DESCRIPTION One-component, silylated polymer-based adhesive for the installation of LVT, SPC and rigid LVT on walls. Also suitable for the installation on floors. Particularly suitable for laying LVT in wet area even on non-absorbent substrates.

TECHNICAL DATA

Consistency: creamy paste.
Colour: ivory.
Open time: 20-30 minutes.
Ready for use: 24 hours.
EMICODE: EC1 R Plus - very low emission.
Storage: 12 months.
Application: U1, V1 or V2 depending on covering type.
Consumption: 250-350 g/m².

PACKAGING

7 kg drums

PRODUCT CODE: 3586207



NEW FORMULA
EVEN BETTER



FastTrack System
Ready



www.blauer-engel.de/uz113



PVC, RUBBER, PO, PU
LINOLEUM, TEXTILES



MAPEI N. 1
TKB A1, A2



Ultrabond Eco Contact

DESCRIPTION Solvent-free contact adhesive for resilient and textile floor and wall coverings. Suitable for bonding covings, fillets, steps and corner pieces.

TECHNICAL DATA

Consistency: creamy paste.
Colour: white.

Waiting time: from 30 minutes to 2 hours depending on the type of application, temperature, environmental moisture and substrate absorption. Installation is possible even 18 hours after the spreading of the adhesive.

Set to light foot traffic: immediate.

EMICODE: EC1 Plus – very low emission.

Storage: 12 months in its original sealed packaging. Avoid prolonged exposure to frost.

Consumption: 150-200 g/m² per coat on every kind of surface.

PACKAGING

5 kg drums.

PRODUCT CODE:

0666305



PVC - RUBBER - LVT, NON-PVC
LINOLEUM - TEXTILES



MAPEI N. 1 - TKB A1
ROLLER, BRUSH



ADHESIVE TAPES

Mapecontact

DESCRIPTION Reinforced adhesive tape for laying profiles, base-boards, covings and resilient and textile coverings on steps.

TECHNICAL DATA

Colour: adhesive: transparent;
reinforcement: orange.

Weight per m²: 0.38 kg/m².

Application temperature range: from +15°C to +35°C.

Waiting time: none, bonds immediately.

Set to light foot traffic: immediate.

Ready for use: immediate.

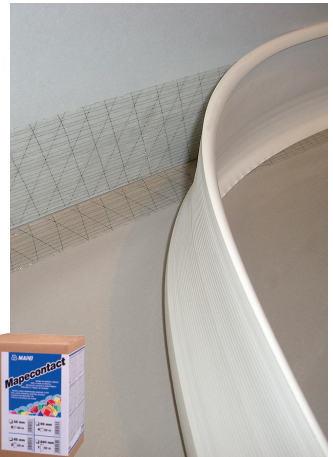
Storage: 12 months.

Height of roll: 35, 65, 85 and 240 mm.

Length of roll: 50 m.

PACKAGING

- 35 mm: boxes containing 8x50 m long rolls 0633050
- 65 mm: boxes containing 4x50 m long rolls 0633150
- 85 mm: boxes containing 3x50 m long rolls 0633250
- 240 mm: boxes containing 1x50 m long roll 0632050



		ULTRABOND ECO V4 EVOLUTION	ULTRABOND ECO FAST TRACK	ULTRABOND ECO 380	ULTRABOND ECO V4 SP	ULTRABOND ECO I70	ULTRABOND ECO CONTACT
VINYL	HOMOGENEOUS VINYL	●	●	●	●		●
	HETEROGENEOUS VINYL	●	●	●	●		●
	MULTI-LAYERED VINYL	●	●	●	●		●
	VINYL CUSHION FLOOR	●	●	●	●		●
	VINYL CUSHION FLOOR WITH TEXTILE BACKING	●	●	●	●		●
	CONDUCTIVE AND STATIC DISSIPATIVE VINYL						●
	SEMI FLEXIBLE/VCT	●	●	●	●		●
	LOOSE LAY VINYL TILES	●	●				●
	WALL VINYL	●	●		●		●
	LVT WALLS	●	●				
	LVT OVER ACOUSTIC MATTING						
	WET AREA VINYL/LVT						●
	LUXURY VINYL TILE (LVT)	●	●		●		●
	COVES, PROFILES AND STEPS		●				●
INDOOR CARPET	VINYL-BACKED CARPET TILE		●				●
	PVC BACKED CARPET TILE		●				●
	DUAL BOND UNDERLAY	●					
	ALL CARPET TYPES OVER DUAL BOND UNDERLAY		●		●	●	
	BACKED CARPET TILE	●	●				●
	AXMINSTER	●	●		●	●	
	ACTION BAC	●	●		●	●	
	TRETFORD		●			●	●
	JUTE, NEEDLE PUNCH & POLYPROPYLENE	●	●		●	●	●
	FOAM BACK	●	●	●	●	●	●
	SECONDARY BACKED	●	●		●	●	●
	RECYCLED BACK/PET BACKED CARPET TILE		●				
	WOVEN & KNITTED BACKING	●	●		●	●	●
	CUSHION BACKED CARPET TILE		●				●
RUBBER	RUBBER TILE	●	●		●		●
	RUBBER (EXTERIOR)						
	RUBBER SHEET	●	●		●		●
LINOLEUM	LINOLEUM	●	●		●		
	LINOLEUM ON SYNTHETIC JUTE	●	●		●		
	LINOLEUM ON VINYL CUSHION FLOOR	●	●		●		

MAPECONTACT	ULTRABOND ECO VS90 PLUS	ULTRABOND ECO TACK	ULTRABOND ECO FIX	ULTRABOND ECO V4 SP FIBER	ULTRABOND ECO V4 SP CONDUCTIVE	ULTRABOND ECO MS 4 LVT WALL	ADESILEX C19
							•
							•
	•						•
	•						•
							•
					•		
			•			•	•
			•			•	
						•	
						•	
	•			•		•	•
•						•	•
		•	•				
		•	•				
		•	•				
		•	•				
	•						
			•				
			•				
	•			•		•	•
	•			•			•
	•					•	•
	•					•	•
	•						•
	•						•



PRODUCTS FOR LVT

Ultrabond Eco MS 4 LVT Wall

**NEW
FORMULA
EVEN BETTER**

DESCRIPTION One-component, silylated polymer based adhesive for the installation of LVT, SPC and rigid LVT on walls. Also suitable for the installation on floors. Particularly suitable for laying in wet area even on non-absorbent substrates.

TECHNICAL DATA

Consistency: creamy paste.
Colour: Ivory.
Open time: 20-30 minutes.
Ready for use: 24 hours.
EMICODE: EC1 R Plus - very low emission.
Storage: 12 months.
Application: N°1 MAPEI trowel, TKB A1, A2.
Consumption: 250-350 g/m².

PACKAGING

7 kg drums

PRODUCT CODE: 3586207



FastTrack System
Ready



www.blauer-engel.de/uz113



LVT, SPC, RIGID LVT



MAPEI N. 1
TKB A1, A2



GROUTS

Flexcolor 4 LVT

DESCRIPTION Ready to use grout for Luxury Vinyl Tiles.

TECHNICAL DATA

Consistency: thick paste.
Colors: 112 medium grey, 114 anthracite, 120 black, 130 jasmine, 134 silk, 146 rich brown.
Waiting time before finishing operation: 10-15 minutes.
Set to light foot traffic: 24 hours.
Ready for use: 72 hours.
EMICODE: EC1 - very low emission.
Application: rubber float.
Cleaning and finishing: Scotch-Brite® pad and MAPEI sponge.

Storage: 12 months.

Consumption: according to the size of the joints.

PACKAGING

1 and 5 kg drums



Kerapoxy 4 LVT

DESCRIPTION Two-component epoxy grout for LVT floorings.

TECHNICAL DATA

Mixing ratio: 9/1.

Consistency: comp. A: thick paste;
comp. B: gel.

Colours: 112 medium grey, 114 anthracite,
120 black, 130 jasmine, 134 silk,
146 rich brown.

Pot life: approx. 45 minutes.

Set to light foot traffic: 12 h.

Ready to use: 3 giorni.

Application: rubber float.

Cleaning and finishing: Scotch-Brite®
pad and MAPEI sponge.

Storage: 24 months.

Consumption: according to the size of
the joints and of the LVT.

PACKAGING

2 kg units



Kerapoxy Cleaner

DESCRIPTION Special cleaning solution for epoxy grout, suitable for cleaning operations after completing laying work and for removing traces and stains of FLEXCOLOR 4 LVT or KERAPOXY 4 LVT from the surface of LVT floor and wall coverings.

TECHNICAL DATA

pH of liquid: 12

Waiting time before rinsing: several
minutes. In the case of larger residues,
leave the solution to react for longer or
repeat the cleaning operation.

Storage: 24 months.

Application: by spray.

Consumption: according to
requirements.

PACKAGING

0.75 kg spray bottles

PRODUCT CODE: 4571542



Spacers 4 LVT

DESCRIPTION PVC spacers for calibrating grout lines in LVT, SPC and rigid LVT. For 2 mm, 3 mm and 4 mm grouts.

PACKAGING
200 pcs sachets



READY-TO-USE GROUT SMOOTHERS

Planiprep 4 LVT

DESCRIPTION Ready-to-use grout smoother for LVT. This product is used to level off and smooth over (down to a feather edge in layers up to 2 mm thick) existing internal ceramic and stone surfaces. It fills joints and gaps between tiles and forms a fine, smooth finish suitable for loose-lay LVT tiles and planks or to be bonded with reactive adhesives, such as ULTRABOND ECO MS 4 LVT WALL very quickly (after 2 hours).

TECHNICAL DATA

Where to use: internal floors and walls for loose-lay LVT.

Consistency: thick paste.

Colour: white.

Thickness applied: 0-2 mm (up to 3-4 mm in gaps and joints).

Set to light foot traffic: approx. 1 hour.

Waiting time before sanding and applying LVT: approx. 2 hours.

EMICODE: EC1 Plus - very low emission.

Storage: 12 months.

Application: trowel.

Consumption: 80-100 g/m².

PACKAGING
10 kg drums

PRODUCT CODE: 7347210



Fast Track System
Ready

Mapecoat 4 LVT

DESCRIPTION Two component aliphatic, anti-slip polyurethane finish in water dispersion for LVT.

TECHNICAL DATA

Mixing ratio: 5/1.

Dust dry: 30 minutes.

Touch dry: 50 minutes.

Re-varnishing (if required): min. 2 hours - max. 48 hours (after more than 48 hours, the surface will need to be adequately prepared with a red or green ULTRACOAT PAD).

Set to light foot traffic: 16 hours.

Ready for use (also in contact with shower water): 24 hours.

EMICODE: EC1 R - very low emission.

Gloss level (approximate value): 10-30 gloss.

Slip resistance according to DIN 51130 and AS 4586: R11.

Barefoot slip resistance according to DIN 51097 and AS 4586: A+B.

Slip resistance according to EN 13036-4 and AS 4586 (pendulum method): dry: 90; wet: 55.

Slip resistance (Method B.C.R.): leather, dry surface (μ): 0.56; rubber, dry surface (μ): 0.74; rubber, wet surface (μ): 0.81.

Consumption: 80-100 g/m².

PACKAGING

1.2 kg kits (A + B)

PRODUCT CODE: 3586302





ACCESSORIES AND ANCILLARY PRODUCTS

Mapecoat 4 LVT

DESCRIPTION Two component aliphatic, anti-slip polyurethane finish in water dispersion for LVT.

TECHNICAL DATA

Mixing ratio: 5/1.

Dust dry: 30 minutes.

Touch dry: 50 minutes.

Re-varnishing (if required): min. 2 hours - max. 48 hours (after more than 48 hours, the surface will need to be adequately prepared with a red or green ULTRACOAT PAD).

Set to light foot traffic: 16 hours.

Ready for use (also in contact with shower water): 24 hours.

EMICODE: EC1 R - very low emission.

Gloss level (approximate value): 10-30 gloss.

Slip resistance according to DIN 51130 and AS 4586: R11.

Barefoot slip resistance according to DIN 51097 and AS 4586: A+B.

Slip resistance according to EN 13036-4 and AS 4586 (pendulum method): dry: 90; wet: 55.

Slip resistance (Method B.C.R.): leather, dry surface (μ): 0.56; rubber, dry surface (μ): 0.74; rubber, wet surface (μ): 0.81.

Consumption: 80-100 g/m².

PACKAGING

1.2 kg kits (A + B)

PRODUCT CODE:

3586302



Mapecoat Wet & Dry R11

DESCRIPTION Two component aliphatic, anti-slip polyurethane finish in water dispersion for resilient floor-coverings.

TECHNICAL DATA

Mixing ratio: 5/1.

Dust dry: 30 minutes.

Touch dry: 50 minutes.

Re-varnishing (if required): min. 2 hours - max. 48 hours (after more than 48 hours, the surface will need to be adequately prepared with a red or green ULTRACOAT PAD).

Set to light foot traffic: 16 hours.

Ready for use (also in contact with shower water): 16 hours.

EMICODE: EC1 R - very low emission.

Gloss level (approximate value): 10-30 gloss.

Slip resistance according to DIN 51130: R11.

Slip resistance according to EN 13036-4 (pendulum method): dry: 90; wet: 55.

Slip resistance (Method B.C.R.): leather, dry surface (μ): 0.56; rubber, dry surface (μ): 0.74; rubber, wet surface (μ): 0.81.

Consumption: 80-100 g/m².

PACKAGING

6 kg kits (A + B)



Cleaner H

DESCRIPTION To clean traces of fresh adhesives and sealants from hands and surfaces.

TECHNICAL DATA

Size of wipes: 20 x 30cm
No. wipes per canister: 80
Colour: white
Storage: 24 months

PACKAGING

Plastic bottles with 80 damp wipes (20x30 cm)

PRODUCT CODE:
108680



Kerapoxy Cleaner

DESCRIPTION Special cleaning solution for epoxy grout, suitable for cleaning operations after completing laying work and for removing traces and stains of KERAPOXY 4 LVT or FLEXCOLOR 4 LVT from the surface of LVT floor and wall coverings.

TECHNICAL DATA

pH of liquid: 12
Waiting time before rinsing: several minutes. In the case of larger residues, leave the solution to react for longer or repeat the cleaning operation.
Storage: 24 months.
Application: by spray.
Consumption: according to requirements.

PACKAGING

0.75 kg spray bottles and 5 kg tanks

PRODUCT CODE:
4571542



Mapei Spray Mop

DESCRIPTION Slim and light with an innovative design, specifically developed for cleaning domestic areas quickly and efficiently. The cleaning solution is fed directly from the support to guarantee an accurate spread over the whole floor.

PACKAGING

Box containing one mop

PRODUCT CODE:

7897006



Notched Trowels

DESCRIPTION Notched metal trowels for the even distribution and coverage of resilient flooring adhesives

MAPEI metal parquetry trowel specifically designed for the installation of timber flooring adhesives

PACKAGING

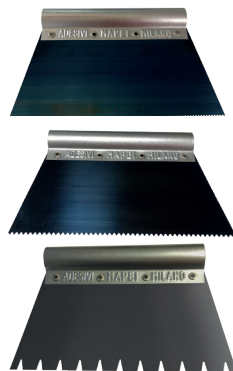
12 trowels per box

PRODUCT CODE:

Metal Trowel No. 1 780101

Metal Trowel No. 2 780201

Parquetry Trowel 790001



Ultracoat Pad

DESCRIPTION Pads used for preparing the surface of LVT to the application of MAPECOAT 4 LVT and MAPECOAT WET & DRY R11.

PACKAGING
Boxes of 6 pads



ACCESSORIES

DESCRIPTION **Wale Tale Dust Remover**
Vacuum attachment for dust reduction when mixing powdered products.

TECHNICAL DATA
Attach to vacuum cleaner hose and place on rim of mixing bucket to capture dust created when mixing powdered products

PACKAGING
Blister pack
PRODUCT CODE:
MKAUS033



Ultracoat Roller MT8

DESCRIPTION Handle for ULTRACOAT ROLLER T3, ULTRACOAT ROLLER T5 and ULTRACOAT ROLLER T10 rollers.

PACKAGING

Box contains 10 handles

PRODUCT CODE:
7251201



Ultracoat Roller T3

DESCRIPTION Roller for applying MAPECOAT 4 LVT and MAPECOAT WET & DRY RT1.

TECHNICAL DATA

Special roller for applying finishing products. The 3mm fabric releases the correct amount of product required for the anti-slip finishes

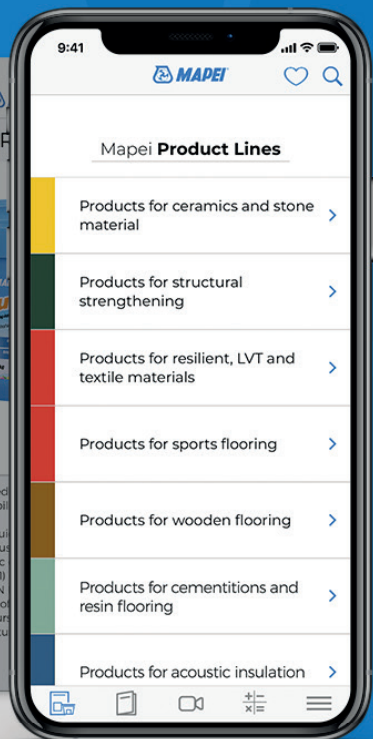
PACKAGING

Box contains 12 rollers

PRODUCT CODE:
7251001



New **MAPEI** APP



The world of Mapei in your hands

Find out more on Mapei from our products catalogue, and from the relevant technical documentation and videos. The grouts and sealants calculator allows you to estimate the correct quantity of product needed for your project. Stay up-to date with Realtà Mapei magazine, our communication tool with the building world and with anyone appreciating and using our products.



AVAILABLE ON
App Store



AVAILABLE ON
Google Play

MAPEI AUSTRALIA

180 Viking Drive
Wacol Qld 4076
Phone: 07 3276 5000
Fax: 07 3276 5076
Email: sales@mapei.com.au
Web: www.mapei.com.au

MAPEI NEW ZEALAND

30 Fisher Crescent
Mt Wellington Auckland New Zealand
Phone: +64 9 921 1994
Fax: +64 9 921 1993
Email: enquiries@mapei.co.nz
Web: www.mapei.co.nz