

PURTOP EASY

EASY WATERPROOFING
THE READY-TO-USE POLYURETHANE



**PURTOP EASY.
READY-TO-USE POLYURETHANE
PRODUCT FOR EASY AND FAST
WATERPROOFING OF BALCONIES,
TERRACES AND TANKS.**

PURTOP EASY

Protection and waterproofing

Mapei Group has always been attuned to the latest market trends and to the needs expressed by its clients and every day dedicates extensive resources to develop **new technologies** for protecting and waterproofing structures.

In each and every formulation, **Mapei** combines the quality, technology, safety and durability of its products with simplicity, versatility and speed during application. This all goes together to guarantee the satisfaction of both clients and users of the products.

Mapei added **Purtop Easy** – a ready-to-use polyurethane product for **waterproofing in just one single coat** – to its solution for waterproofing balconies, terraces and tanks.

The **high elasticity** and **excellent bond-strength** to substrates of this particular product makes it ideal for both new and old builds, rapidly guaranteeing a perfect waterproofing solution.



Drinking water tanks



Balconies with old tiles



Deteriorated terraces



Old flat roofs



Easy waterproofing

The product **Purtop Easy** is versatile and easy to apply.

It is used for **waterproofing balconies, terraces, roofs** and **surfaces open to foot traffic** in general. It also provides excellent results when waterproofing **storage tanks** and **basins** for drinking water.

Ideal for both **new and old structures**, the **Purtop Easy** membrane may be used for an extensive range of applications.

Perfect for substrates made from various materials such as **cementitious screeds** and **substrates, old tiles, bituminous membranes** and **metal**, it is suitable for the various **application methods** employed: with a **trowel** or by **spray**.



Purtop Easy



PURTOP EASY

One-component elastic polyurethane membrane with **coloured finish** or coating for waterproofing new or existing balconies, terraces, flat roofs and surfaces open to foot traffic.



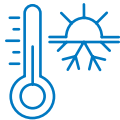


Advantages of Purtop Easy

Highly elastic and durable, the membrane from **Purtop Easy** is **just as easy to apply** with a brush, trowel or by spray on both horizontal and vertical surfaces. **Purtop Easy** may be applied **in just one single coat** by adding **Purtop ADY**, which helps it **dry more quickly**.

The membrane is characterised by **excellent mechanical properties**, which remain unaltered even at **low temperatures** (down to -40°C). Once applied it guarantees **total impermeability** to structures, even in the presence of **ponding water**.

The **membrane is certified** against **root penetration** and as being suitable for use by **foot traffic**.



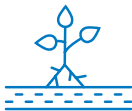
RESISTANT TO LOW
AND HIGH TEMPERATURES
(from -40°C to $+80^{\circ}\text{C}$)



RESISTANT
TO UV RAYS



FULLY
IMPERMEABLE



RESISTANT
TO ROOT PENETRATION



CE-MARKED
MEMBRANES



ETA CERTIFIED
SYSTEM



EXCELLENT
AND FULL ADHESION
TO SUBSTRATES



RESISTANT
TO PONDING
WATER



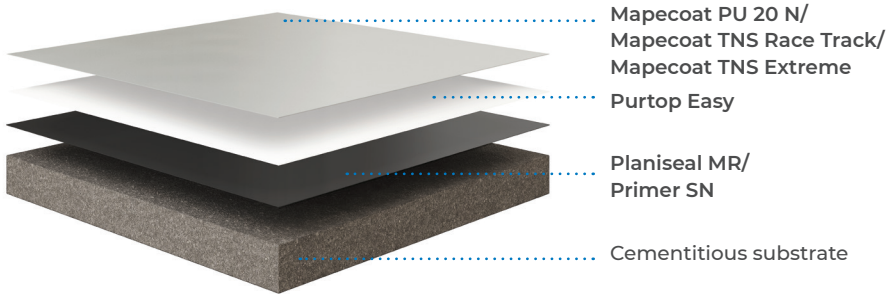
RESISTANT
TO FOOT
TRAFFIC



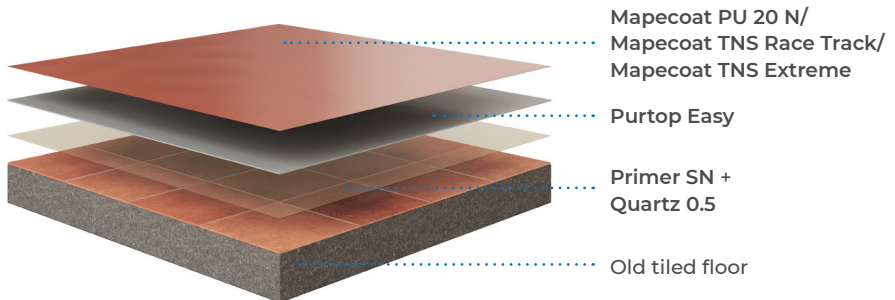
Application and layers for Purtop Easy

Purtop Easy may be used for waterproofing new structures and for refurbishing old structures, **even without removing flooring**. **Purtop Easy** may have an exposed finish or a new coating for exterior may be applied on it.

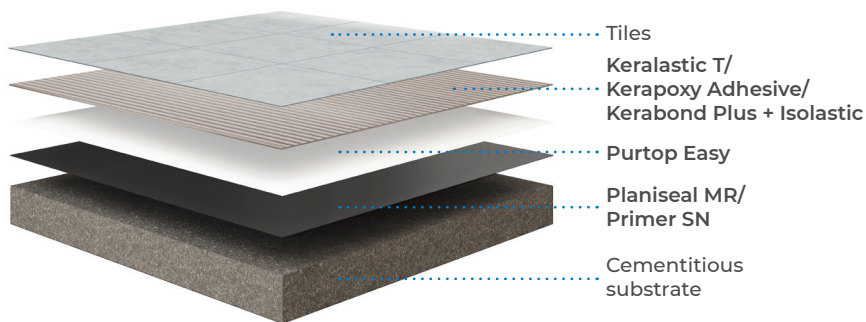
New builds



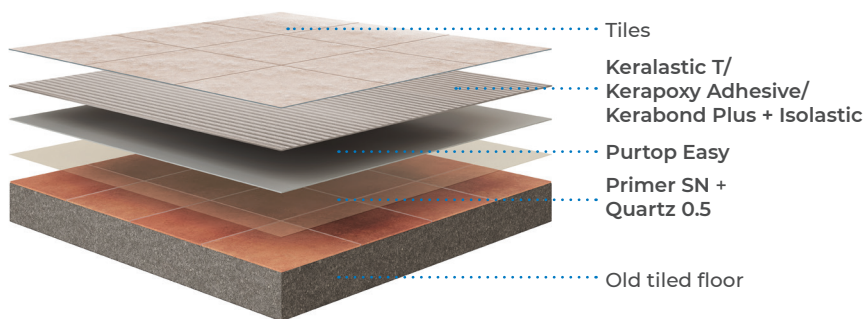
Renovations



New builds



Renovations



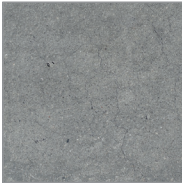


Application and layers for Purtop Easy

1. Preparation of the substrate

After checking and cleaning the substrate the membrane is to be applied on, the surface needs to be treated with a suitable primer. Which primer to use depends on the nature of the substrate.

Cementitious
substrates



Primer SN
Planiseal MR

Old bituminous
membranes



Mapecoat
I 600 W
diluted 1:1 with water

Existing
tiles



Primer SN

2. Application of the membrane

Once the primer has cured, apply two coats of **Purtop Easy** with a trowel or by spray and lay on **Mapetex FG** glass fibre mesh so it becomes embedded in the membrane.

Alternatively, by adding **Purtop ADY** to the membrane, only one coat will be needed. The final thickness should never be less than 1.2 mm.

3. Finish of the membrane

When a durable **attractive coloured finish** or a non-slip finish is required, coat **Purtop Easy**, within 24-48 hours of application, with **Mapecoat PU 20 N**, two-component polyurethane aliphatic finish, to be applied in at least two coats.

Or to obtain a non-slip finish, add primer **Purtop Easy** with **Primer EPW** and apply two coats of **Mapecoat TNS Race Track** or **Mapecoat TNS Extreme**.

If a **ceramic tiling** is to be installed on **Purtop Easy**, it is possible to use the epoxy-polyurethane adhesive **Keralastic T** or the epoxy adhesive **Kerapoxy Adhesive**.

Alternatively, use the cementitious adhesive **Kerabond Plus** mixed with **Isolastic** as is. When using **Kerabond Plus** cementitious adhesive, it is necessary to apply on dry **Purtop Easy** membrane a thin layer of **Purtop Easy** broadcast, while still fresh, with **Quartz 0.5**.



Projects using Purtop Easy

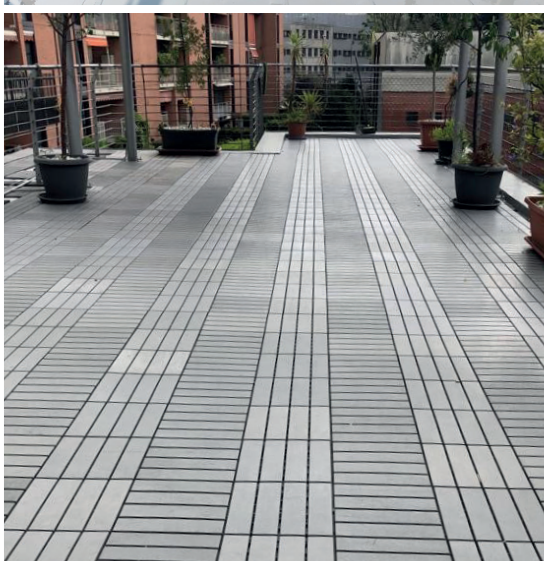
Waterproofing of existing balcony and terrace
with Purtop Easy - Magenta (Milan)





Projects using Purtop Easy

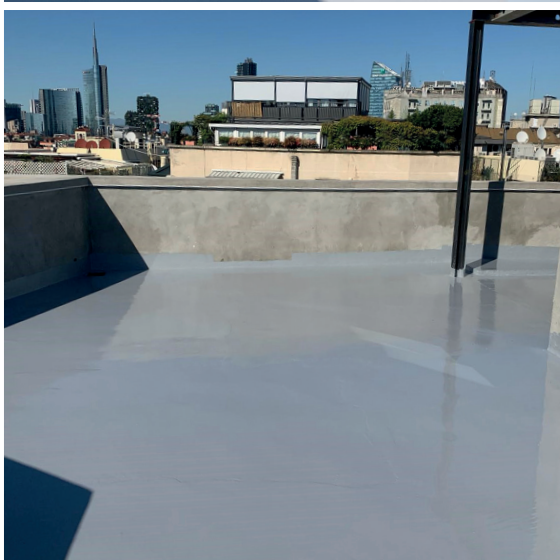
Restoration of a waterproofing membrane on a terrace
using Purtop Easy - Milan





Projects using Purtop Easy

Waterproofing of a terrace with Purtop Easy Milan





Projects using Purtop Easy

Waterproofing of a flat roof with Purtop Easy Catania





Projects using Purtop Easy

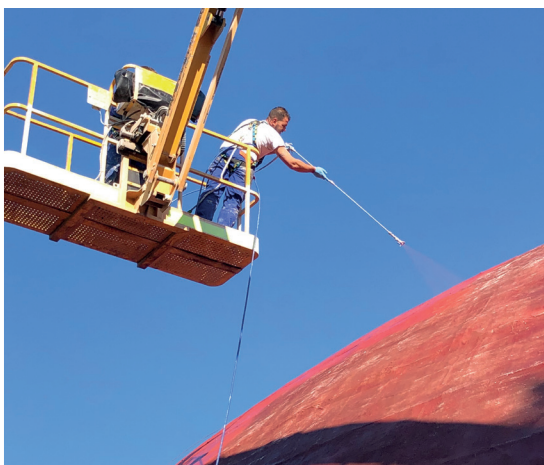
Waterproofing of a private terrace with Purtop Easy - Messina





Projects using Purtop Easy

Restoration of a waterproofing membrane using
Purtop Easy - Novi Ligure (Alessandria)



EVERYTHING'S OK WITH MAPEI

Mapei Australia Pty Ltd
180 Viking Drive, Wacol,
Brisbane 4076, Australia
+61 7 3276 5000
sales@mapei.com.au
mapei.com.au

