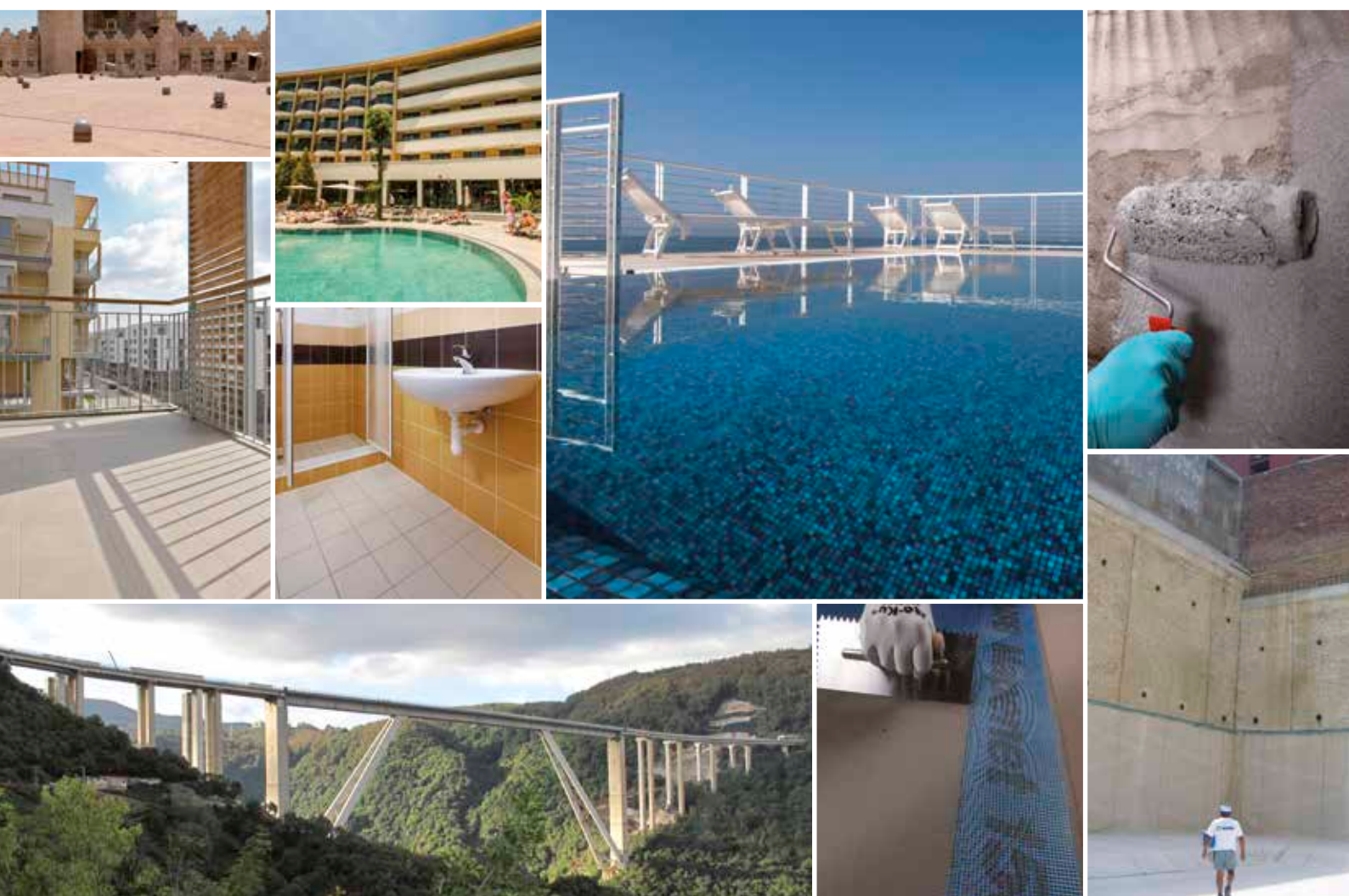


# SELECTION CHART OF WATERPROOFING PRODUCTS





# BATHROOMS, DAMP AREAS, SWIMMING POOLS, INDUSTRIAL KITCHENS, BALCONIES, TERRACES and FLAT ROOFS



**Toilets, swimming pools, spas, industrial kitchens, balconies and terraces: all environments to be protected from water.**

In order to waterproof these environments efficiently it is important to:

- protect structures from deterioration;
- improve rooms' comfort;
- reduce maintenance costs to the minimum.

That's why MAPEI always offer their customers different systems for specific problems and always has the right product with suitable accessories to solve these problems.



Bathrooms



Swimming Pools



Kitchen



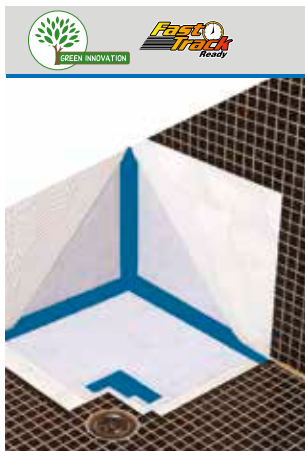
### Mapelastic AquaDefense

- ▶ **Ready-to-use, flexible, liquid waterproofing** membrane
- ▶ **Solvent-free**
- ▶ **Ultra-quick** drying
- ▶ For **internal** and **external** waterproofing applications
- ▶ Ceramic and stone material may be applied after only **4 hours**
- ▶ Class III membrane according to AS4858:2004 Wet Area Membranes



### Mapelastic Smart

- ▶ **Two-component, high-flexibility cementitious mortar**
- ▶ For **protection** and **waterproofing**
- ▶ Used in conjunction with **Mapenet 150, Mapeband SA or Mapetex Sel**
- ▶ **Mapelastic Smart** may be also used on surfaces particularly stressed or crazed and helps to **improve** both **elongation at break** and crack bridging
- ▶ Certified for use with Potable Water according to AS/NZS 4020:2005
- ▶ Meets AS/NZS 4858:2004 Class II Wet Area Membrane - CSIRO Test Report No 7816
- ▶ Meets the requirements of AS 4654.1:2012, non-exposed waterproofing membrane - Test Report No. 7816.1



### Mapegum WPS

- ▶ **Fast drying, liquid elastic membrane** for interior waterproofing
- ▶ **Solvent-free**
- ▶ **Ready-to-use**
- ▶ Application: **smooth trowel, roller** or **spray** in two crossing coats (1 mm each)
- ▶ For **thin thicknesses** (ca. 1 mm max. per coat)



### Mapeband

- ▶ **Alkali-resistant rubber tape with felt** for cementitious waterproofing systems and liquid membranes
- ▶ For **walls** and **floors**
- ▶ For **any type of substrate**
- ▶ For baths, showers, terraces, balconies, etc., that are to be tiled with ceramic tiles, marble, natural stones
- ▶ **Adesilex LP** is particularly recommended for joining **Mapeband**



### Mapeband TPE

- ▶ **TPE tape** for **flexible sealing and waterproofing** structural joints subject to movements **up to 5 or 10 mm**
- ▶ For expansion joints in road-works, water tunnels and covering applications
- ▶ **Adesilex LP** is particularly recommended for joining **Mapeband TPE**



### Mapeband PE 120

- ▶ **PVC tape** for waterproofing systems formed using liquid membrane, not cementitious.
- ▶ **Flexible waterproofing** seal of edges, expansion joints, pipes and drains.



### Mapeband SA

- ▶ **Self-adhesive butyl tape** with alkali-resistant, non-woven fabric for elastic waterproofing systems
- ▶ Seals between different types of material and waterproofing narrow fillets in tight spaces
- ▶ May be applied on various substrates after suitable preparation and application of a suitable primer





### Mapelastic Smart



- ▶ **Two-component, high-flexibility cementitious mortar**
- ▶ For **protection and waterproofing**
- ▶ Used in conjunction with **Mapenet 150, Mapeband SA or Mapetex Sel**
- ▶ **Mapelastic Smart** may be also used on surfaces particularly stressed or crazed and helps to **improve both elongation at break** and crack bridging
- ▶ Certified for use with Potable Water according to AS/NZS 4020:2005
- ▶ Meets AS/NZS 4858:2004 Class II Wet Area Membrane - CSIRO Test Report No 7816
- ▶ Meets the requirements of AS 4654.1:2012, non-exposed waterproofing membrane - Test Report No. 7816.1



### Mapelastic Foundation



- ▶ Two-component, flexible **cementitious mortar** for waterproofing
- ▶ For **concrete surfaces subject to negative or positive hydrostatic pressure**
- ▶ For **foundation walls, car-parks, environments below ground level, water channels and swimming pools**
- ▶ To be applied by **roller or spray**
- ▶ For **horizontal and vertical surfaces** at a **thickness of at least 2 mm**

### Mapeband



- ▶ **Alkali-resistant rubber tape with felt** for cementitious waterproofing systems and liquid membranes
- ▶ For **walls and floors**
- ▶ For **any type of substrate**
- ▶ For baths, showers, terraces, balconies, etc., that are to be tiled with ceramic tiles, marble, natural stones
- ▶ **Adesilex LP** is particularly recommended for joining **Mapeband**

### Mapeband TPE



- ▶ **TPE tape for flexible sealing and waterproofing** structural joints subject to movements **up to 5 or 10 mm**
- ▶ For expansion joints in road-works, water tunnels and covering applications
- ▶ **Adesilex LP** is particularly recommended for joining **Mapeband TPE**

### Mapetex Sel



- ▶ **Non-woven, macro-holed polypropylene fabric**
- ▶ **Waterproofing, with synthetic polypropylene fibres**
- ▶ For **reinforcing** waterproofing membranes

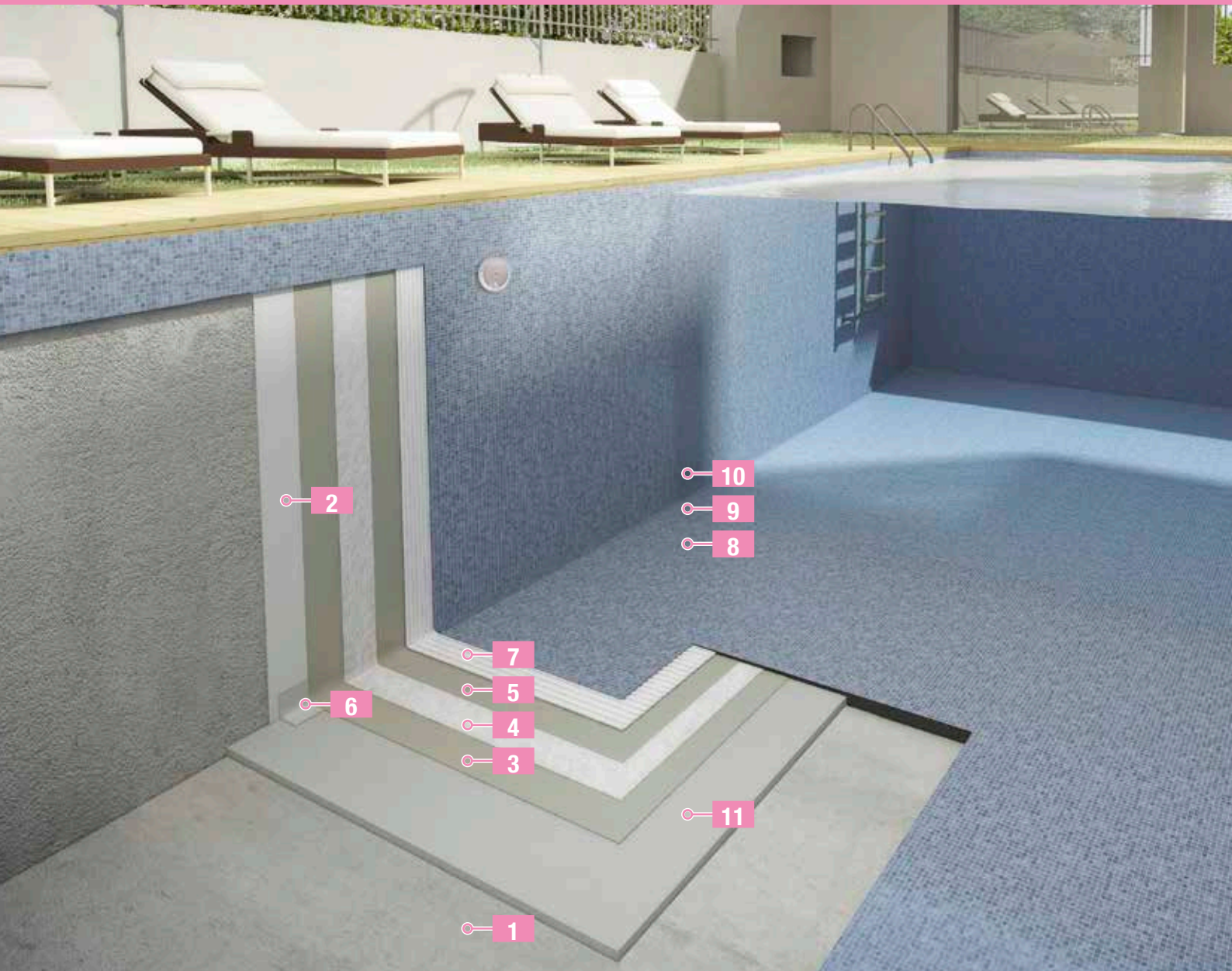
### Mapenet 150



- ▶ **Alkali-resistant glass fibre mesh**
- ▶ For reinforcing protective waterproofing layers
- ▶ **Anti-fracture membranes** and thermal insulation systems

# WATERPROOFING SYSTEM FOR THE INSTALLATION OF GLASS MOSAICS IN SWIMMING POOLS

this system makes it possible  
to obtain **GREEN STAR™** credits



- |   |  |  |   |
|---|--|--|---|
| <b>1</b> Reinforced cement structure                                    | <b>4</b> Polypropylene Fabric<br><b>Mapetex Sel</b>  | <b>7</b> Adhesive<br><b>Kerabond Plus<br/>+ Isolastic 50</b> | <b>10</b> Sealant<br><b>Mapesil AC</b>  |
| <b>2</b> Smoothing compound<br><b>Planitop Smooth and<br/>Repair R4</b> | <b>5</b> Cementitious waterproofer<br><b>Mapelastich Smart</b>                                 | <b>8</b> Glass mosaics                                       | <b>11</b> Floor<br><b>Planitop Smooth and<br/>Repair R4</b> or<br><b>Topcem Pronto</b> bonded |
| <b>3</b> Cementitious waterproofer<br><b>Mapelastich Smart</b>          | <b>6</b> Monolithic sealing of the<br>coving to the substrate<br><b>Eporip + Mapegrout T40</b> | <b>9</b> Grout<br><b>Kerapoxy Design</b>                     |   |



2 - 11

3 - 5

4

6

7

9

10

11



# WATERPROOFING SYSTEM FOR THE RAPID INSTALLATION OF CERAMIC TILES ON BALCONIES

this system makes it possible  
to obtain **GREEN STAR™** credits



*Planicrete SP*

*bonding slurry*

1



*Mapecem*

*screed*

2



*Mapeband*

*rubber tape*

3



*Mapeflex PU45*

*sealant & adhesive*

4



*Mapelast AquaDefense*

*waterproofer (2 coats)*

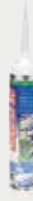
5



*Granirapid or  
Keraquick S1*

*adhesive*

6



*Mapesil AC*

*sealant*

7



*Ultracolor Plus*

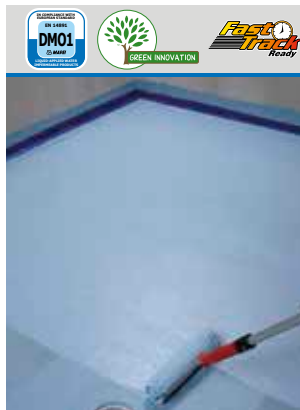
*grout*

8



## Mapelastic Smart

- ▶ **Two-component, high-flexibility cementitious mortar**
- ▶ For **protection and waterproofing**
- ▶ Used in conjunction with **Mapenet 150, Mapeband SA or Mapetex Sel**
- ▶ **Mapelastic Smart** may be also used on surfaces particularly stressed or crazed and helps to **improve both elongation at break** and crack bridging
- ▶ Certified for use with Potable Water according to AS/NZS 4020:2005
- ▶ Meets AS/NZS 4858:2004 Class II Wet Area Membrane - CSIRO Test Report No 7816
- ▶ Meets the requirements of AS 4654.1:2012, non-exposed waterproofing membrane - Test Report No. 7816.1



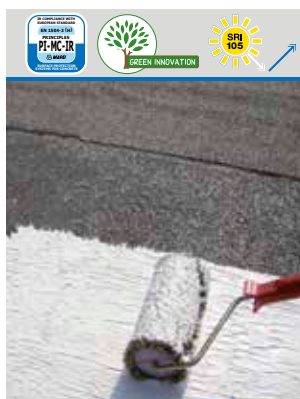
## Mapelastic AquaDefense

- ▶ **Ready-to-use, flexible, liquid waterproofing** membrane
- ▶ **Solvent-free**
- ▶ **Ultra-quick** drying
- ▶ For **internal and external** waterproofing applications
- ▶ Ceramic and stone material may be applied after only **4 hours**
- ▶ Class III membrane according to AS4858:2004 Wet Area Membranes



## Aquaflex Roof Grey

- ▶ **Ready-to-use, flexible liquid membrane**, with fibres for continuous waterproofing layers on exposed external surfaces
- ▶ **Ready-to-use**
- ▶ **Set to light foot traffic**
- ▶ **Stored for 24 months** in original packaging
- ▶ For **continuous** waterproofing



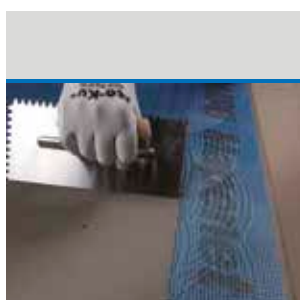
## Aquaflex Roof HR

- ▶ **Fibre-filled liquid membrane in water emulsion with high solar reflectance** and thermal emittance with a high SRI solar reflectance index (105)
- ▶ **Ready-for-use**
- ▶ **Lowers the surface temperature** of the roof **by more than 50%** compared with dark coloured roofs
- ▶ For **continuous exposed** waterproofing layers
- ▶ **High reflectance white colour**



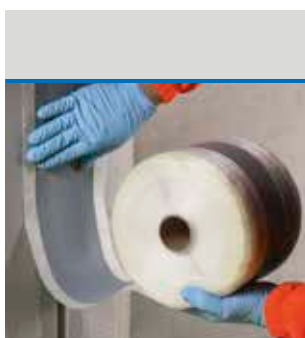
## Mapetex Sel

- ▶ **Non-woven, macro-holed polypropylene fabric**
- ▶ **Waterproofing, with synthetic polypropylene fibres**
- ▶ For **reinforcing** waterproofing membranes



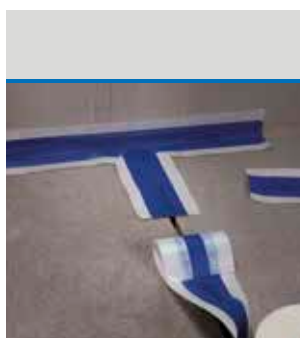
## Mapenet 150

- ▶ **Alkali-resistant** glass fibre mesh
- ▶ For reinforcing protective waterproofing systems and liquid membranes
- ▶ **Anti-fracture membranes** and thermal insulation systems



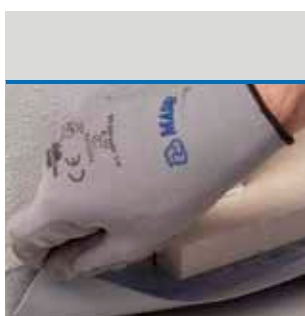
## Mapeband TPE

- ▶ **TPE tape** for **flexible sealing and waterproofing** structural joints subject to movements **up to 5 or 10 mm**
- ▶ For expansion joints in road-works, water tunnels and covering applications
- ▶ **Adesilex LP** is particularly recommended for joining **Mapeband TPE**



## Mapeband

- ▶ **Alkali-resistant rubber tape with felt** for cementitious waterproofing systems and liquid membranes
- ▶ For **walls and floors**
- ▶ For **any type of substrate**
- ▶ For baths, showers, terraces, balconies, etc., that are to be tiled with ceramic tiles, marble, natural stones
- ▶ **Adesilex LP** is particularly recommended for joining **Mapeband**

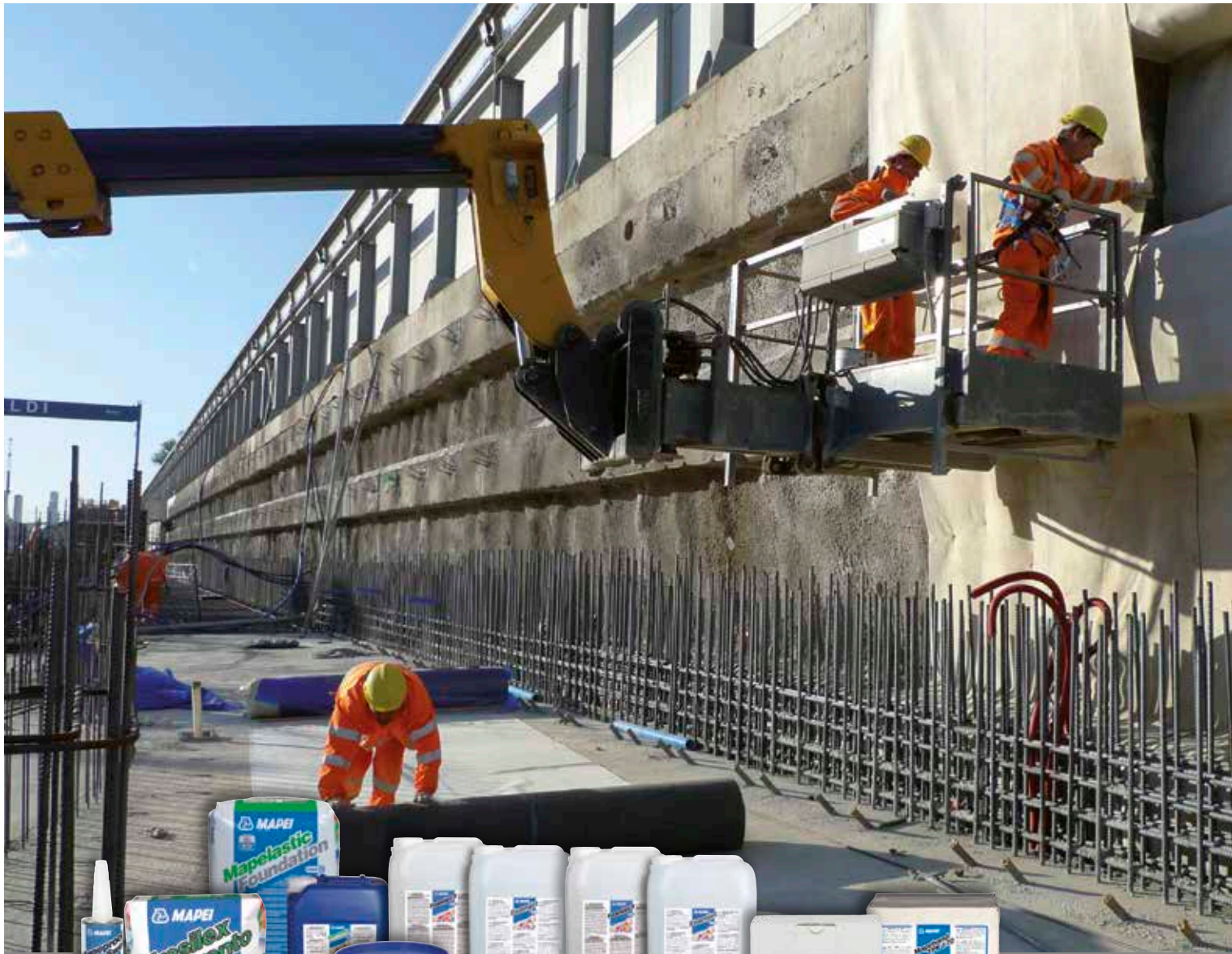


## Mapeband SA

- ▶ **Self-adhesive butyl tape** with alkali-resistant, non-woven fabric for elastic waterproofing systems
- ▶ Seals between different types of material and waterproofing narrow fillets in tight spaces
- ▶ May be applied on various substrates after suitable preparation and application of a suitable primer



# UNDERGROUND STRUCTURES



**Underground structures level: the parts of a building which are most often in contact with water and aggressive elements in the ground.**

All structures below ground level come into contact with the humidity in the ground or with the water table and must be protected to guarantee the life-span of buildings. If no suitable protection is applied, there are no construction materials with the capacity of resisting the various factors which are present below ground level. MAPEI offers a wide array of repair and protection solutions which guarantee an efficient solution for any construction element.



New constructions

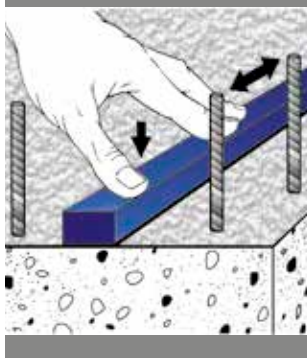


Repairs



## UNDERGROUND STRUCTURES

### Idrostop



- ▶ **Hydrophilic expandable rubber section** for watertight construction joints
- ▶ Specially designed to form watertight **construction joints up to a hydraulic pressure of 5 atm**
- ▶ **Bentonite-free**
- ▶ Creates an **active barrier against pressurized water** (positive and negative)
- ▶ For **concrete, metal, PVC and natural stone**
- ▶ Bond **Idrostop** to the substrate with **Idrostop Mastic**

### Mapeband TPE



- ▶ **TPE tape for flexible sealing and waterproofing** structural joints subject to movements **up to 5 or 10 mm**
- ▶ For expansion joints in road-works, water tunnels and covering applications
- ▶ **Adesilex LP** is particularly recommended for joining **Mapeband TPE**

### Idrosilex Pronto



- ▶ **Osmotic cementitious mortar** suitable for contact with drinking water
- ▶ For **waterproofing** foundations, walls, cellars, **basements**, lift-rooms, swimming pools, canals and reservoirs. Also safe for use on containers holding drinking water
- ▶ To be applied by **brush, trowel or spray**

### Mapelastix Foundation



- ▶ Two-component, flexible **cementitious mortar** for waterproofing
- ▶ For **concrete surfaces** subject to **negative or positive hydrostatic pressure**
- ▶ For **foundation walls, car-parks, environments below ground level, water channels and swimming pools**
- ▶ To be applied by **roller or spray**
- ▶ For **horizontal and vertical surfaces** at a **thickness of at least 2 mm**

### Lamposilex



- ▶ Ultra-fast setting and drying **hydraulic binder** for plugging water leaks
- ▶ Use **Lamposilex** to **plug any source of water**, even under pressure, in basements, tunnels, subways, etc
- ▶ For **sealing watertight rigid joints** in hydraulic concrete structures, sewers, tanks and canals

### Plastimul



- ▶ Solvent-free, **bitumen waterproofing emulsion** for general purpose use
- ▶ For **horizontal and vertical surfaces**
- ▶ For **foundations, retaining walls, layers beneath tiles**, etc

### Mapeproof Swell



- ▶ Hydro-expansive, rubber-based hydrophilic sealant paste in tubes, applied using an extrusion pistol.

# BATHROOMS, DAMP ENVIRONMENTS, SWIMMING POOLS, BALCONIES and TERRACES SELECTION CHART

	Horizontal and vertical surfaces	Fillets	Joints	Cross-members
<b>BATHROOMS &amp; DAMP ENVIRONMENTS</b>				
Mapelastic Smart	•			
Mapelastic AquaDefense	•			
Mapegum WPS	•			
Mapeband		•	•	•
Mapeband SA		•		•
Mapeband PE120		•	•	•
<b>SWIMMING POOLS</b>				
Mapelastic Foundation	•			
Mapelastic Smart	•			
Mapeband		•	•	
Mapeband TPE			•	
Mapeproof Swell				•
<b>BALCONIES &amp; TERRACES</b>				
Aquaflex Roof Grey*	•			
Aquaflex Roof HR*	•			
Mapelastic Smart	•			
Mapelastic AquaDefense	•			
Mapetex Sel	•			
Mapeband		•	•	
Mapeband TPE			•	
Mapenet 150	•			
Mapeband SA		•		

\* Waterproofing layers on exposed external surfaces



# UNDERGROUND STRUCTURES

## SELECTION CHART

	Post-cast walls	Reinforced concrete walls with negative lift	Brick walls with negative lift	Lift shaft	Structural joint	Construction joint	Through bodies	Pile heads
UNDERGROUND STRUCTURES								
Idrostop				•		•	•	
Mapeproof Swell		•		•			•	•
Mapeband	•					•		
Mapeband TPE					•			
Idrosilex Pronto	•	•	•	•				
Mapelastic Foundation	•	•		•				
Lamposilex		•		•		•	•	
Plastimul	•							



#### ● Technical documentation

From the technical area menu you can view the technical documentation divided per product lines and type of document.

#### MAPEI AUSTRALIA

180 Viking Drive

Wacol Qld 4076

Phone: 07 3276 5000

Fax: 07 3276 5076

Email: [sales@mapei.com.au](mailto:sales@mapei.com.au)

Web: [www.mapei.com.au](http://www.mapei.com.au)

#### MAPEI NEW ZEALAND

30 Fisher Crescent

Mt Wellington Auckland New Zealand

Phone: +64 9 921 1994

Fax: +64 9 921 1993

Email: [enquiries@mapei.co.nz](mailto:enquiries@mapei.co.nz)

Web: [www.mapei.co.nz](http://www.mapei.co.nz)