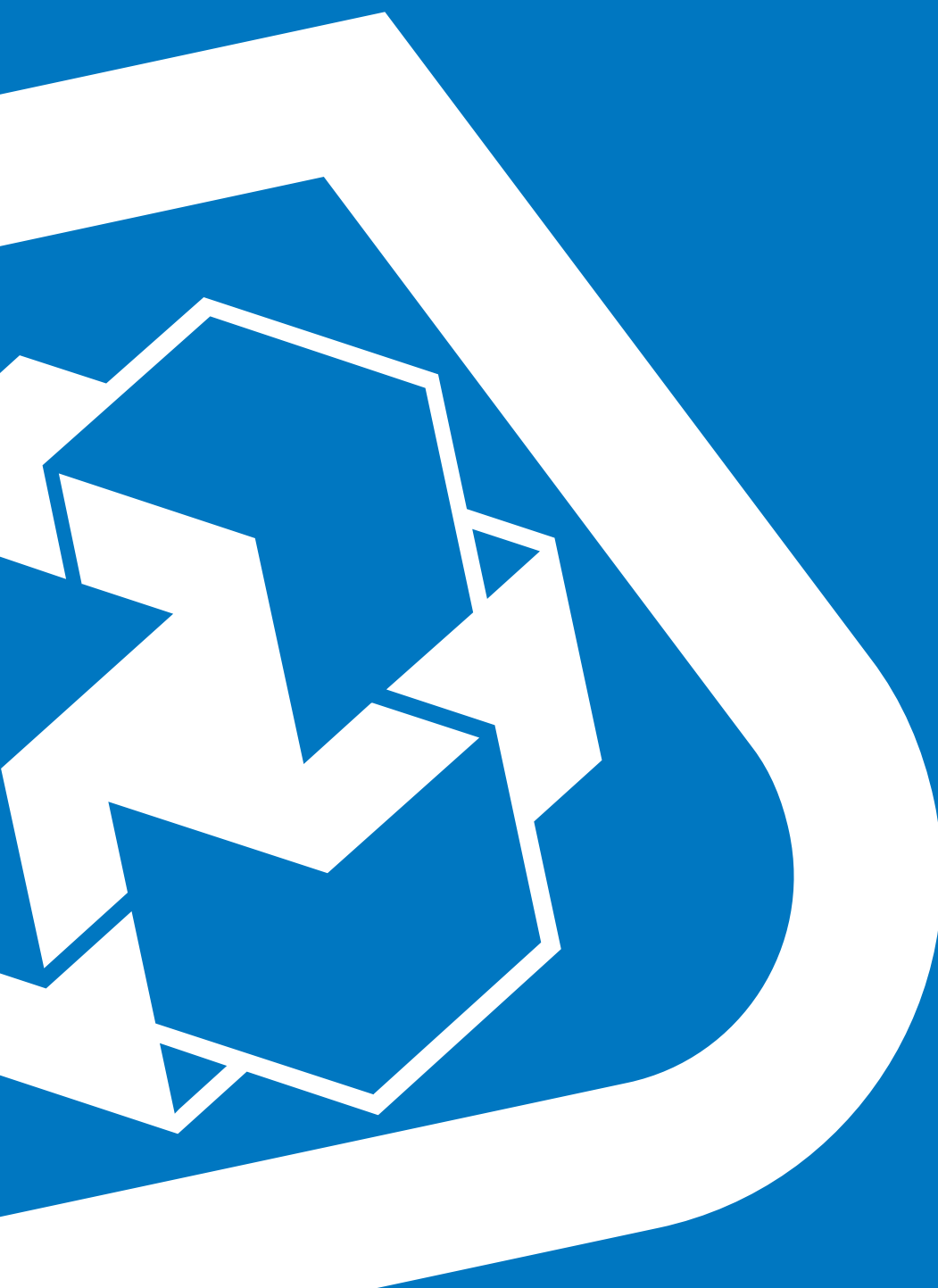




WATERPROOFING SYSTEMS PRODUCT CATALOGUE

August 2023



WATERPROOFING SYSTEMS PRODUCT CATALOGUE

August 2023

INDEX



WATERPROOFING STRUCTURES BELOW GROUND LEVEL

5



WATERPROOFING STRUCTURES ABOVE GROUND LEVEL

17



SEALING AND WATERPROOFING JOINTS AND FILLETS

29



POLYGLASS

37



ADMIXTURES FOR WATERPROOFING CONCRETE

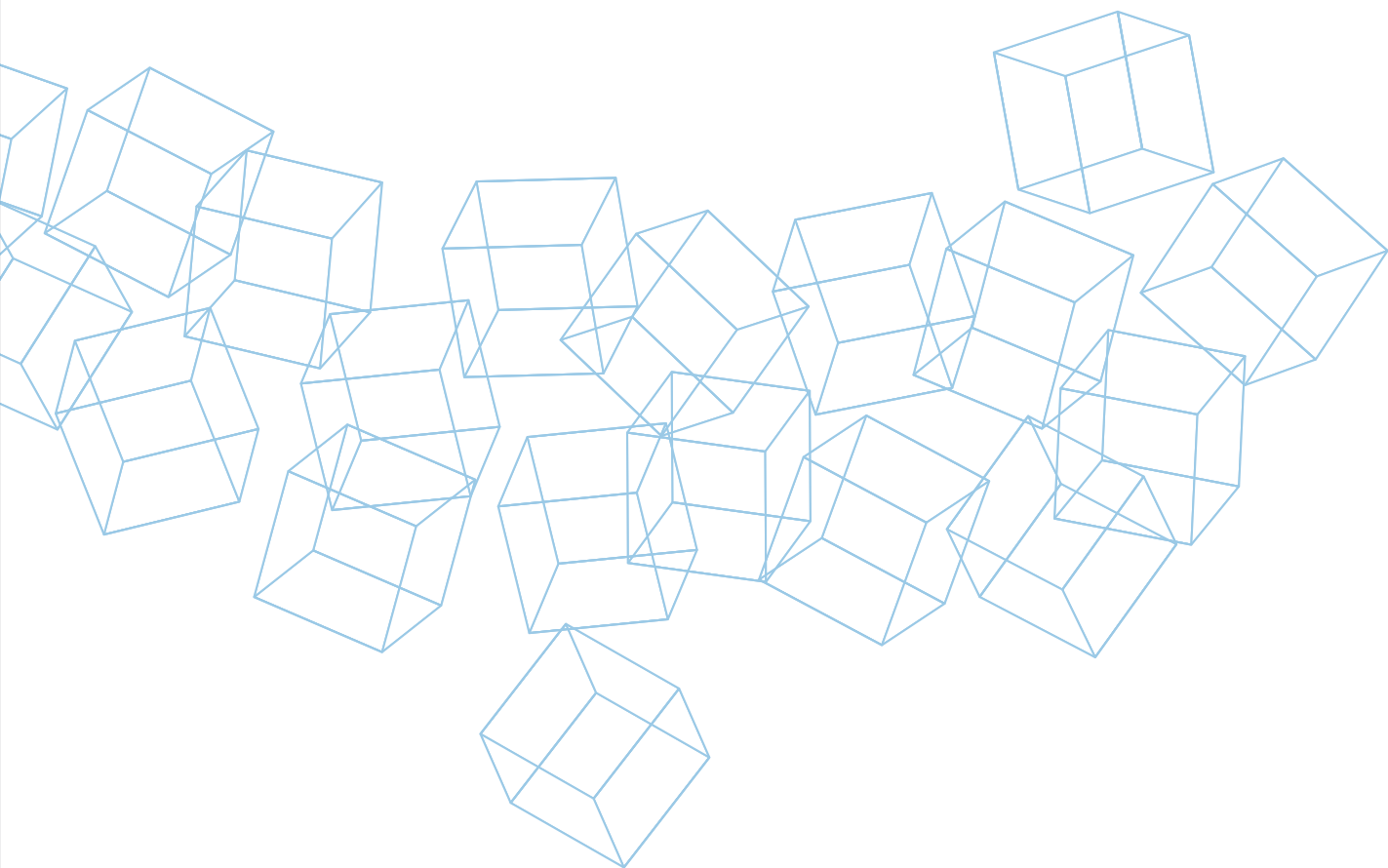
45



WATER-REPELLENT PRODUCTS FOR THE PROTECTION OF CONCRETE

49





WATERPROOFING STRUCTURES BELOW GROUND LEVEL

Injection Tube 5.7 – 8 mm

Injection tube for **Mapeplan TU** membrane systems.



CHECK THE
TECHNICAL
DATASHEET
on mapei.com.au

APPLICATION installed into **Mapeplan** system

PACKAGING 50 m roll

Lamposilex

Ultra-fast setting and curing hydraulic binder for stopping water leaks.



CONSUMPTION 1.8 kg/dm³ of cavity to be filled

PACKAGING 5 kg drums and 5 kg bags

**CERTIFICATIONS
AND MARKINGS**



CHECK THE
TECHNICAL
DATASHEET
on mapei.com.au

Mapelastastic Foundation

Two-component, flexible cementitious mortar for waterproofing concrete surfaces subject to negative and positive hydraulic lift.



APPLICATION roller or spray

CONSUMPTION

- roller: 1.65 kg/m² per mm of thickness;
- spray: 2.2 kg/m² per mm of thickness

PACKAGING 32 kg kit (component A = 22 kg bag;
component B = 10 kg tanks)

**CERTIFICATIONS
AND MARKINGS**



CHECK THE
TECHNICAL
DATASHEET
on mapei.com.au



Mapelastic TU

One-component ready to use polymeric sprayable membrane for tunnels and underground structure waterproofing.



CHECK THE
TECHNICAL
DATASHEET
on mapei.com.au

APPLICATION	spray
PACKAGING	260 kg drums

Mapeplan Anchoring

Anchoring with M16 bar in heavy-duty plastic case to be used in **Mapeplan** waterproofing system in combination with **Mapefix** resins for fixings in tunnels.



CHECK THE
TECHNICAL
DATASHEET
on mapei.com.au

APPLICATION	insert and weld
PACKAGING	250 mm—boxes of 10

Mapeplan Anchoring Connector

Connector for anchoring **Mapeplan** tunnel membrane.



CHECK THE
TECHNICAL
DATASHEET
on mapei.com.au

APPLICATION	install in conjunction with Mapeplan Anchors
PACKAGING	sold in boxes of 25

Mapeplan Collarino Plus

Prefabricated PVC-P Collars.



[CHECK THE
TECHNICAL
DATASHEET](#)
on mapei.com.au

APPLICATION welding

PACKAGING 10 collars per box

Mapeplan Disks Fis. PVC F .3 mm

PVC Mapeplan fixing disks.



[CHECK THE
TECHNICAL
DATASHEET](#)
on mapei.com.au

APPLICATION mechanically fastened and welded

PACKAGING box of 300

Mapeplan Injection Valve

Testing and injection valve for Mapeplan TU membrane systems.



[CHECK THE
TECHNICAL
DATASHEET](#)
on mapei.com.au

APPLICATION welded installation

PACKAGING box of 10



Mapeplan Tape PVC H 350 mm

A flexible glass-reinforced PVC tape with non-woven polyester fabric strips on one side. The fabric edge allow and secure bonding on different kind of substrate by using the proper adhesive.



CHECK THE
TECHNICAL
DATASHEET
on mapei.com.au

APPLICATION welded to **Mapeplan** membrane

PACKAGING 20 m rolls

Mapeplan TU 20

Mapeplan TU 20 is a PVC-P synthetic waterproofing membrane with an orange signal layer; it can be applied as a fluid barrier in tunnel and underground waterproofing works.



CHECK THE
TECHNICAL
DATASHEET
on mapei.com.au

APPLICATION fixed and welded

PACKAGING 2.1 x 24 m rolls

Mapeplan Waterstop 320 mm with Bulb

320mm PVC waterstop for sealing structural joints, expansion joints and for realization of compartments in waterproofing system, equipped with injection tube.



CHECK THE
TECHNICAL
DATASHEET
on mapei.com.au

APPLICATION weld to Mapeplan

PACKAGING 20 m rolls

Mapeproof AL 1200 AP

HDPE self-adhesive membrane to waterproof underground structures after pouring concrete.



CHECK THE
TECHNICAL
DATASHEET
on mapei.com.au

PACKAGING 1 m x 20 m rolls

Mapeproof AL AP

Fully bonded HDPE membrane for waterproofing underground structures.



PACKAGING 1 m x 20 m rolls

CERTIFICATIONS
AND MARKINGS



CHECK THE
TECHNICAL
DATASHEET
on mapei.com.au

Mapeproof AL Tape D10 AP

Double-sided adhesive tape for jointing, sealing and strengthening the **Mapeproof AL AP** system.



CHECK THE
TECHNICAL
DATASHEET
on mapei.com.au

PACKAGING 4 carton box containing 0.1 m x 20 m rolls



Mapeproof BA Tape

Watertight, double-sided adhesive sheet membrane which are placed along fillet joints between horizontal and vertical surfaces and between adjacent vertical surfaces in **Mapeproof FBT** waterproofing systems.



CHECK THE
TECHNICAL
DATASHEET
on mapei.com.au

PACKAGING 0.33 m x 20 m rolls

Mapeproof FBT

Synthetic fully bonded waterproof sheet membrane, laminated with non-woven fabric for waterproofing underground structures.



CHECK THE
TECHNICAL
DATASHEET
on mapei.com.au

PACKAGING 1 m x 20 m rolls

CERTIFICATIONS
AND MARKINGS



Mapeproof FBT Tape 600

Adhesive tape to form sealed joints over the top of adjacent sheets of **Mapeproof FBT** System.



CHECK THE
TECHNICAL
DATASHEET
on mapei.com.au

PACKAGING 0.15 m x 20 m rolls

Mapeproof Fix Tape

Double-sided adhesive tape to hold sheets of **Mapeproof FTB** in place during installation.

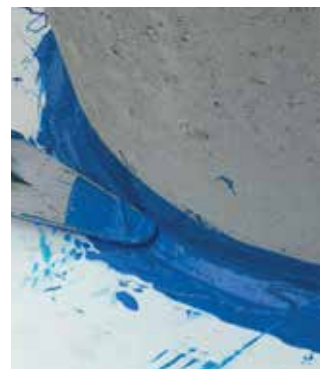


[CHECK THE
TECHNICAL
DATASHEET](#)
on mapei.com.au

PACKAGING 0.2 m x 25 m rolls

Mapeproof Liquid Membrane

Two-component polyurethane liquid waterproofing membrane for sealing, detailing and repairing **Mapeproof AL AP** membranes (before pouring concrete), and **Mapethene HT/LT**, **Mapeproof SA** and **Mapeproof AL 1200 AP** membranes (after pouring concrete)



APPLICATION metal trowel or gauging trowel.

CONSUMPTION 1.2 kg/m²/mm (consumption on smooth concrete surfaces).
Minimum thickness 2.5 mm

PACKAGING 3.5 kg units (A+B)

[CHECK THE
TECHNICAL
DATASHEET](#)
on mapei.com.au

Mapeproof SA

Self-adhesive fully bonded HDPE membrane for waterproofing underground structures.



PACKAGING 1 m x 20 m rolls

**CERTIFICATIONS
AND MARKINGS**



[CHECK THE
TECHNICAL
DATASHEET](#)
on mapei.com.au



Mapeproof SA Primer

One-component rapid-drying primer for treating surfaces prior to applying **Mapeproof SA**.



APPLICATION roller

CONSUMPTION 0.3 – 0.5 kg/m²

PACKAGING 10 kg drums

CHECK THE
TECHNICAL
DATASHEET
on mapei.com.au

Mapeproof SA Tape

Adhesive tape to form sealed joints under adjacent sheets of **Mapeproof FBT** System.



PACKAGING 0.2 m x 20 m rolls

CHECK THE
TECHNICAL
DATASHEET
on mapei.com.au

Mapeproof Swell

Expansive, rubber-based hydrophilic sealant paste in tubes, applied using an extrusion gun.



CONSUMPTION approx. 320 ml for 3 m.

PACKAGING boxes containing 6 x 320 ml cartridges

CHECK THE
TECHNICAL
DATASHEET
on mapei.com.au

Planiseal 88

Osmotic cementitious mortar suitable for contact with drinking water, for waterproofing masonry and concrete structures.

APPLICATION	roller, brush or spray
CONSUMPTION	1.5 kg/m ² per mm of thickness
COLOURS	white and grey
PACKAGING	20 kg bags

CERTIFICATIONS AND MARKINGS



CHECK THE
TECHNICAL
DATASHEET
on mapei.com.au

Plastimul

Bitumen waterproofing emulsion for general purpose use.

APPLICATION	trowel, brush or spray
CONSUMPTION	approx. 1.7 kg/m ² per mm of dry product depending on the substrate
PACKAGING	12kg and 20kg drums

CERTIFICATIONS AND MARKINGS



CHECK THE
TECHNICAL
DATASHEET
on mapei.com.au

Resfoam 1KM IT

One-component, flexible, ultra-fluid polyurethane resin applied by injection for waterproofing, structures, soils and rocks subject to intense water seepage, with adjustable reaction times.

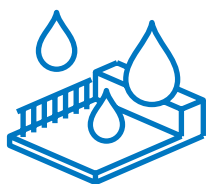
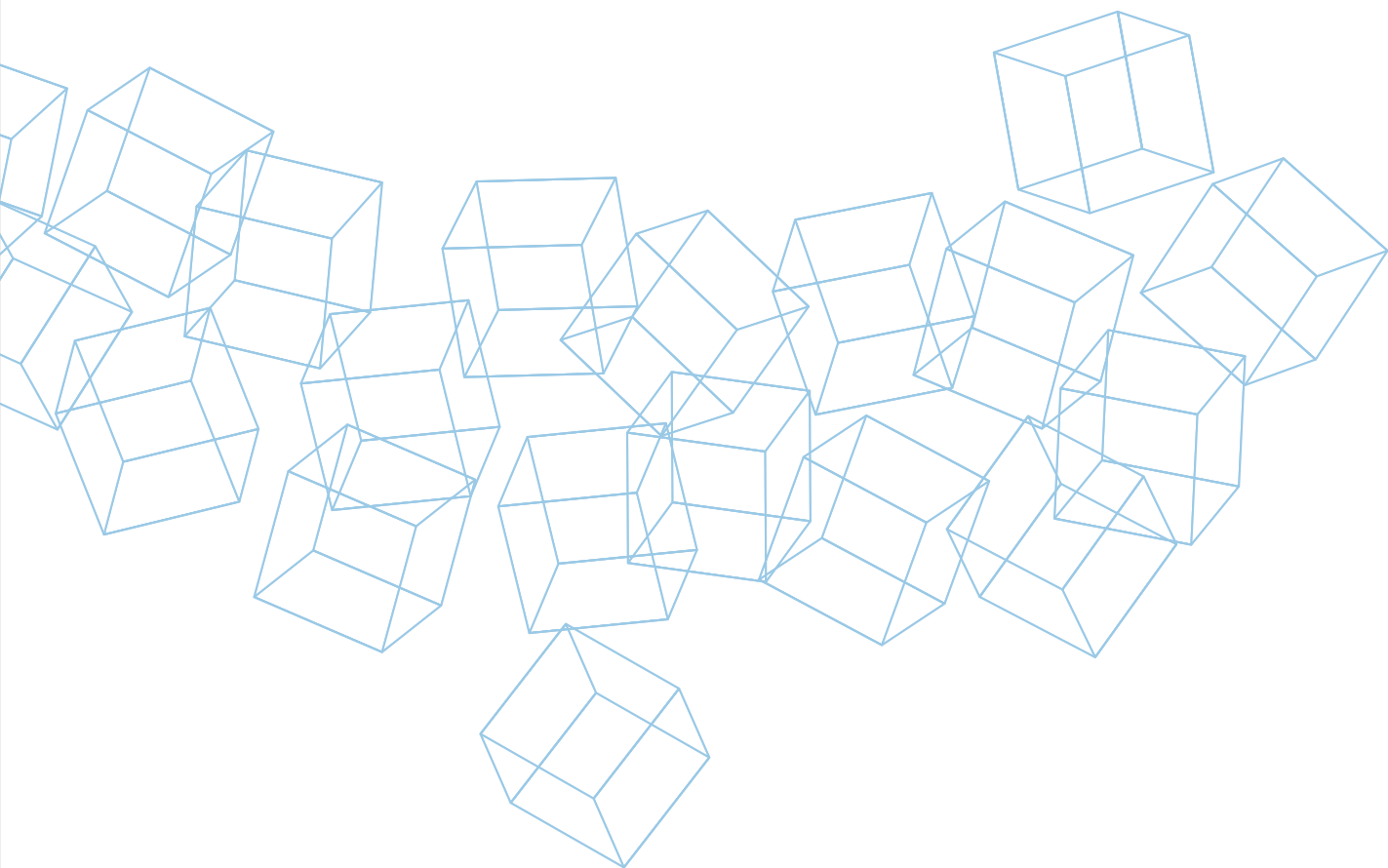
APPLICATION	injection
CONSUMPTION	in open air, 1 kg of Resfoam 1KM IT + 0.1 kg of Resfoam 1KM IT AKS produces 50 litres of expanded foam on contact with 0.1 litre of water.
PACKAGING	<ul style="list-style-type: none"> • Resfoam 1KM IT (resin): 20 kg plastic drums • Resfoam 1KM IT AKS (accelerator): 1 kg plastic bottle



CHECK THE
TECHNICAL
DATASHEET
on mapei.com.au







WATERPROOFING STRUCTURES ABOVE GROUND LEVEL

Aquaflex Primer

Synthetic resin-based primer in solvent solution for bituminous, cement-asbestos or loose substrates.



APPLICATION	roller, brush or spray
CONSUMPTION	approx. 0.20 kg/m ² per coat
PACKAGING	6 kg drums

**CHECK THE
TECHNICAL
DATASHEET**
on mapei.com.au

Aquaflex Roof

Ready-to-use flexible liquid membrane with fibres for continuous waterproofing layers on exposed external surfaces.

APPLICATION	long pile roller, brush or spray
CONSUMPTION	<ul style="list-style-type: none"> • as waterproofing membrane: at least 2 kg/m²; • protective finish on bituminous substrates: <ul style="list-style-type: none"> – approx. 0.5 kg/m² on smooth membranes – approx. 0.9 kg/m² on membranes with a slate-chip face
COLOUR	according to RAL colour available
PACKAGING	20 kg drums

CERTIFICATIONS
AND MARKINGS



**CHECK THE
TECHNICAL
DATASHEET**
on mapei.com.au

Aquaflex Roof HR

Fibre-filled liquid membrane in water emulsion with high solar reflectance and thermal emittance with a solar reflectance index (SRI) of 105.

APPLICATION	long pile roller, brush or spray
CONSUMPTION	<ul style="list-style-type: none"> • as waterproofing membrane: at least 2 kg/m² • protective finish on bituminous substrates: <ul style="list-style-type: none"> – approx. 0.5 kg/m² on smooth membranes – approx. 0.9 kg/m² on membranes with a slate-chip face
COLOUR	highly reflective white
PACKAGING	20 kg drums

CERTIFICATIONS
AND MARKINGS



**CHECK THE
TECHNICAL
DATASHEET**
on mapei.com.au



Aquaflex WPU

Ready-to-use quick drying and flexible Class III water-based hybrid polyurethane membrane for internal and external waterproofing applications.



APPLICATION	roller, brush or trowel
CONSUMPTION	approx. 750ml/m ² /coat or 1.5 litres per mm of thickness
PACKAGING	15 litre drums

CHECK THE
TECHNICAL
DATASHEET
on mapei.com.au

Mapecoat PU 20 N

Two-component coloured aliphatic polyurethane topcoat for membranes from the **Purtop** range.

APPLICATION	roller or spray
CONSUMPTION	approx. 0.15 – 0.2 kg/m ²
COLOUR	RAL 7042 TRAFFIC GREY
PACKAGING	15 kg kit (component A = 12.9 kg; component B = 2.1 kg)

CERTIFICATIONS
AND MARKINGS



CHECK THE
TECHNICAL
DATASHEET
on mapei.com.au

Mapecoat TC

Wear-resistant coloured aliphatic polyurethane finish for membranes from the **Purtop** range.

APPLICATION	roller or spray
CONSUMPTION	0.5 – 0.6 kg/m ² per two coats
COLOUR	according to RAL colour available
PACKAGING	18 kg kit (component A = 15 kg; component B = 3 kg)



CHECK THE
TECHNICAL
DATASHEET
on mapei.com.au

Mapecoat TNS Primer EPW Kit

Two-component epoxy primer in water dispersion. Primer for products from the **Mapecoat TNS** line and priming **Purtop** waterproofing membranes for pedestrian traffic applications using **Mapecoat TNS** as the top coat wear layer.



APPLICATION spray, roller or airless spray

PACKAGING 10 kg kit

[CHECK THE
TECHNICAL
DATASHEET
on \[mapei.com.au\]\(http://mapei.com.au\)](#)

Mapecoat TNS Extreme

A two-component, rapid-drying epoxy-acrylic resin to create durable coatings on surfaces, including those with vehicle access.



APPLICATION spray, roller or airless spray

PACKAGING 16.67 kg kit
(component A = 0.67 kg; component B = 16 kg (coloured))

[CHECK THE
TECHNICAL
DATASHEET
on \[mapei.com.au\]\(http://mapei.com.au\)](#)

Mapecoat TNS Racetrack

Acrylic waterborne, rapid film-forming, coloured coating to protect concrete and asphalt surfaces subject to a high level of footfall, including driveways.



APPLICATION spray, roller or airless spray

PACKAGING 20 kg plastic drums

[CHECK THE
TECHNICAL
DATASHEET
on \[mapei.com.au\]\(http://mapei.com.au\)](#)



Mapegum WPS AU

Quick-drying, flexible liquid membrane for waterproofing internal surfaces.

APPLICATION roller, brush or trowel

CONSUMPTION 1.2 kg/m² per two coats

PACKAGING 5 and 20 kg drums

**CERTIFICATIONS
AND MARKINGS**



**CHECK THE
TECHNICAL
DATASHEET**
on mapei.com.au

Mapelastic AquaDefense

Ready-to-use, ultra quick-drying, flexible liquid membrane for waterproofing internal and external surfaces.

APPLICATION roller, brush or trowel

CONSUMPTION 1.3 kg/m² per mm of thickness

PACKAGING 15 kg drum

**CERTIFICATIONS
AND MARKINGS**



**CHECK THE
TECHNICAL
DATASHEET**
on mapei.com.au

Mapelastic Guard

Two-component, elastomer coating for protecting large concrete structures subjected to high stress.

APPLICATION trowel, or spray with a rendering machine

CONSUMPTION

- approx. 1.7 kg/m² per mm of thickness (by trowel);
- approx. 2.2 kg/m² per mm of thickness (by spray)

PACKAGING 32 kg kit:

- 24 kg bags (comp. A);
- 8 kg tanks (comp. B)

**CERTIFICATIONS
AND MARKINGS**



**CHECK THE
TECHNICAL
DATASHEET**
on mapei.com.au

Mapelastic Smart

Two-component, high-flexibility cementitious mortar (with crack-bridging > 2 mm), applied by trowel or with a roller, for waterproofing balconies, terraces, bathrooms and swimming pools.

APPLICATION roller, brush or spray

CONSUMPTION

- by roller or trowel approx. 1.6 kg/m² per mm of thickness
- by spray approx. 2.2 kg/m² per mm of thickness

PACKAGING 30 kg kit (component A = 20 kg; component B = 10 kg)

CERTIFICATIONS AND MARKINGS



CHECK THE TECHNICAL DATASHEET
on mapei.com.au

Mapenet 150

Alkali-resistant (according to ETAG 004 guideline) fibre glass mesh used to reinforce waterproof protection layers, antifracture membranes and external thermal insulation systems.

PACKAGING 1 m x 50 m rolls



CHECK THE TECHNICAL DATASHEET
on mapei.com.au

Mapetex 50

Non-woven polypropylene fabric (weight 50 g/m²) for reinforcing waterproof membranes.

PACKAGING

- 200 mm x 25 m rolls
- 1 m x 25 m rolls



CHECK THE TECHNICAL DATASHEET
on mapei.com.au



Mapetex Sel N

Non-woven polypropylene fabric for reinforcing waterproofing membranes.



PACKAGING

- 100 mm x 25 m rolls
- 200 mm x 25 m rolls
- 1 m x 25 m rolls

CHECK THE
TECHNICAL
DATASHEET
on mapei.com.au

Planiseal MR

Two-component water-based epoxy primer and moisture barrier suitable for green concrete and damp substrates.



APPLICATION

roller or brush

PACKAGING

- 10 litre kit (component A = 5 L; component B = 5 L)
- 20 litre kit (component A = 10 L; component B = 10 L)

CHECK THE
TECHNICAL
DATASHEET
on mapei.com.au

Primer EP Rustop

Two-component epoxy primer for metal surfaces.



APPLICATION

roller, brush or airless spray

CONSUMPTION

0.2 kg/m²

COLOUR

white

PACKAGING

5 kg kit (component A = 3.85 kg; component B = 1.15 kg)

CHECK THE
TECHNICAL
DATASHEET
on mapei.com.au

Primer FT

Two-component ultra-rapid primer for **Purtop** waterproofing systems

APPLICATION	roller, trowel or rake
CONSUMPTION	approx. 0.3 kg/m ² per coat
PACKAGING	5.4 kg kit (component A = 4.7 kg; B = 0.7 kg)

CERTIFICATIONS
AND MARKINGS



CHECK THE
TECHNICAL
DATASHEET
on mapei.com.au

Primer PU 60

Moisture curing solvent polyurethane resin for consolidating and waterproofing screeds.

APPLICATION	roller or brush
CONSUMPTION	0.4 – 1.2 kg/m ²
PACKAGING	10 kg drums



CHECK THE
TECHNICAL
DATASHEET
on mapei.com.au

Primer PU Fast

Two-component polyurethane primer for absorbent substrates.

APPLICATION	roller or trowel
CONSUMPTION	approx. 0.15 – 0.3 kg/m ²
PACKAGING	10 kg kit (component A = 4.5 kg; component B = 5.5 kg)



CHECK THE
TECHNICAL
DATASHEET
on mapei.com.au



Primer SN

Two-component epoxy primer with fillers.

APPLICATION	straight metal trowel or straight rake
CONSUMPTION	0.3 – 0.7 kg/m ² per coat, depending on the absorbency and the characteristics of the substrate
COLOUR	neutral
PACKAGING	20 kg kits (component A = 16 kg; component B = 4 kg)

CERTIFICATIONS
AND MARKINGS



CHECK THE
TECHNICAL
DATASHEET
on mapei.com.au

Purtop 1000 N

Two-component, solvent-free pure polyurea membrane applied by spray with a high-pressure, bi-mixer type pump, to form waterproof coatings for hydraulic works, roofs and bridge decks directly on site.

APPLICATION	spray using a high-pressure, bi-mixer type pump
CONSUMPTION	2.2 kg/m ² per 2 mm of thickness
PACKAGING	450 kg kit (component A = 225 kg bag; component B = 225 kg)

CERTIFICATIONS
AND MARKINGS



CHECK THE
TECHNICAL
DATASHEET
on mapei.com.au

Purtop 500 N

Two-component, solvent-free, hybrid polyurea membrane applied by spray using a high-pressure, bi-mixer type pump to form waterproof coatings on roofs directly on site.

APPLICATION	spray using a high-pressure, bi-mixer type pump
CONSUMPTION	2.2 kg/m ² per 2 mm of thickness
PACKAGING	450 kg kit (component A = 225 kg bag; component B = 225 kg)

CERTIFICATIONS
AND MARKINGS



CHECK THE
TECHNICAL
DATASHEET
on mapei.com.au

Purtop ADY

Admixture for applying **Purtop Easy** waterproofing membranes in just one single coat.



CHECK THE
TECHNICAL
DATASHEET
on mapei.com.au

PACKAGING boxes containing: 6 x 1.2 l

Purtop Primer Black

One-component solvent primer, specific for improving adhesion of asphalt flooring on surfaces waterproofed with products from the **Purtop** range.



CHECK THE
TECHNICAL
DATASHEET
on mapei.com.au

APPLICATION roller or spray

PACKAGING 20 kg drums

Purtop Easy

One-component, elastic polyurethane waterproofing membrane.



CHECK THE
TECHNICAL
DATASHEET
on mapei.com.au

APPLICATION spray or notched trowel

Consumption 2 kg/ m² corresponds to a dry coat approx. 1.5 mm

COLOURS grey

PACKAGING 15 kg drum

CERTIFICATIONS
AND MARKINGS



Additix P

Thixotropising agent for **Purtop Easy**.

APPLICATION Add **Additix P** to **Purtop Easy** at the recommended dosage

CONSUMPTION 2 kg/ m² corresponds to a dry coat approx. 1.5 mm:
0.9 kg of **Additix P** every 25 kg of **Purtop Easy**

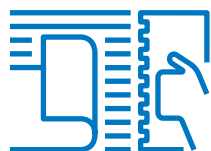
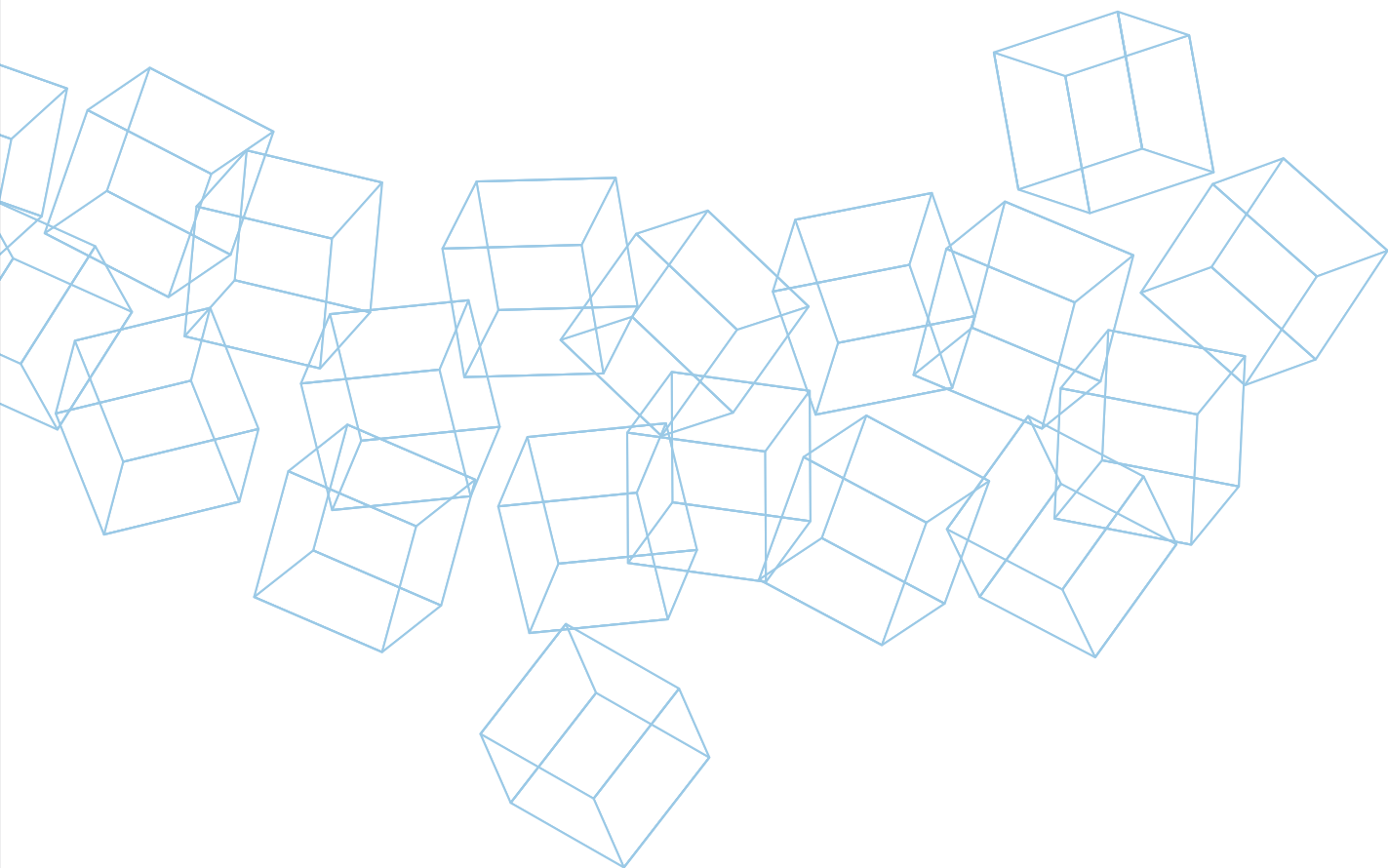
PACKAGING **Additix P** is supplied in 0.9 kg metal cans.



CHECK THE
TECHNICAL
DATASHEET
on mapei.com.au







SEALING AND WATERPROOFING JOINTS AND FILLETS

Adesilex PG1 Rapido

Two-component, rapid-setting, thixotropic epoxy adhesive for structural bonds.

APPLICATION	trowel
CONSUMPTION	1.65 – 1.75 kg/m ² per mm of thickness
PACKAGING	6 kg kit (component A = 4.5 kg; component B = 1.5 kg)

CERTIFICATIONS AND MARKINGS



CHECK THE
TECHNICAL
DATASHEET
on mapei.com.au

Adesilex PG4

Two-component, thixotropic epoxy adhesive with modified rheology for bonding **Mapeband**, **Mapeband TPE**, PVC strips and Hypalon and for structural bonds.

APPLICATION	gauging trowel or straight trowel
CONSUMPTION	1.60 – 1.65 kg/m ² per mm of thickness
PACKAGING	6 kg kit (component A = 4.5 kg; component B = 1.5 kg)

CERTIFICATIONS AND MARKINGS



CHECK THE
TECHNICAL
DATASHEET
on mapei.com.au

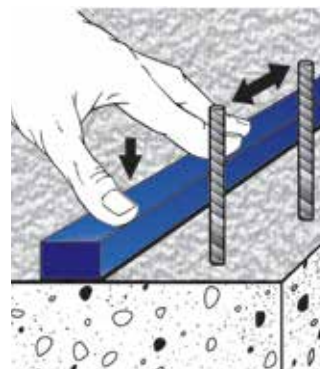
Idrostop

Hydrophilic, expanding rubber profiles for waterproof working joints.

APPLICATION	bonding with Idrostop Mastic
-------------	-------------------------------------

SIZE	<ul style="list-style-type: none"> • Idrostop 10: 20 x 10 mm • Idrostop 15: 20 x 15 mm
------	--

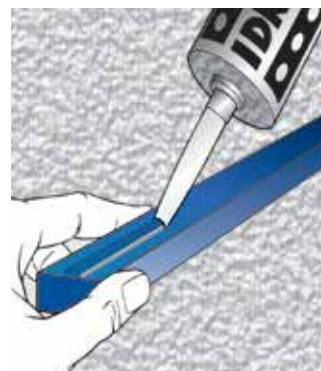
PACKAGING	<ul style="list-style-type: none"> • Idrostop 10: 6 x 10 m rolls • Idrostop 15: 6 x 7 m rolls
-----------	---



CHECK THE
TECHNICAL
DATASHEET
on mapei.com.au

Idrostop Mastic

One-component adhesive for laying **Idrostop**.



CONSUMPTION approx. 300 ml every 5 m of **Idrostop**

PACKAGING boxes containing 12 x 300 ml cartridges

**CERTIFICATIONS
AND MARKINGS**



**CHECK THE
TECHNICAL
DATASHEET**
on mapei.com.au

Mapeband

Rubber tape with alkali-resistant fabric for cementitious waterproofing systems and liquid membranes.

PACKAGING

- 50 m rolls, with 120 mm of total width
- 10 m rolls, with 120 mm of total width
- 90° and 270° corners
- collars for passing-through pipes 120 x 120 mm and 400 x 400 mm
- special cross and T profiles

**CERTIFICATIONS
AND MARKINGS**



**CHECK THE
TECHNICAL
DATASHEET**
on mapei.com.au

Mapeband Easy

Rubber tape sandwiched between two layers of non-woven fabric to form elastic joints in waterproofing systems.

PACKAGING

- 30 m rolls
- 10 m rolls
- 90° and 270° corners
- collars for passing-through pipes 200 x 200 mm and 400 x 400 mm

**CERTIFICATIONS
AND MARKINGS**



**CHECK THE
TECHNICAL
DATASHEET**
on mapei.com.au

Mapeband Flex Roll

Tape for flexible sealing and waterproofing of expansion joints and cracks.



SIZE 200 mm and 300 mm (thickness: 2 mm thickness)

PACKAGING 20 m rolls

**CERTIFICATIONS
AND MARKINGS**



**CHECK THE
TECHNICAL
DATASHEET**
on mapei.com.au

Mapeband PE 120

PVC tape for waterproofing systems created using liquid membranes.



PACKAGING

- 50 m rolls, with 120 mm of total width
- 10 m rolls, with 120 mm of total width
- 90° and 270° corners
- collars for passing-through pipes 120 x 120 mm and 425 x 425 mm

**CERTIFICATIONS
AND MARKINGS**



**CHECK THE
TECHNICAL
DATASHEET**
on mapei.com.au

Mapeband SA

Self-adhesive butyl tape with alkali-resistant, non-woven fabric backing for elastic waterproofing systems.



WIDTH 100 mm

PACKAGING

- 25 m rolls
- collars for passing-through pipes 370 x 370 mm

**CERTIFICATIONS
AND MARKINGS**



**CHECK THE
TECHNICAL
DATASHEET**
on mapei.com.au

Mapeband TPE

TPE tape for flexible sealing and waterproofing of expansion joints and cracks subject to movement.



CHECK THE
TECHNICAL
DATASHEET
on mapei.com.au

SIZE	• 17 cm (Mapeband TPE 170)
	• 32.5 cm (Mapeband TPE 325)

PACKAGING	30 m rolls (for both 170 and 325)
-----------	-----------------------------------

Mapeflex MS 45

Paintable hybrid sealant and adhesive with high modulus of elasticity also for wet substrates, for movements up to 20%.



CHECK THE
TECHNICAL
DATASHEET
on mapei.com.au

APPLICATION	extrusion gun
CONSUMPTION	3.0 meters per 300 ml cartridge (10 x 10 mm section)
COLOURS	white, 113 grey, black
PACKAGING	300 ml cartridge, 600 ml sausage

CERTIFICATIONS
AND MARKINGS



Mapeflex MS Crystal

Crystal clear, flexible, hybrid sealant and adhesive with high modulus of elasticity, also for wet substrates.



CHECK THE
TECHNICAL
DATASHEET
on mapei.com.au

APPLICATION	extrusion gun
CONSUMPTION	3.0 meters per 300 ml cartridge (10 x 10 mm section)
COLOUR	crystal clear
PACKAGING	300 ml cartridges.

CERTIFICATIONS
AND MARKINGS



Mapeflex PU 40

Polyurethane sealant with low modulus of elasticity, for movements up to 25%.

APPLICATION extrusion gun

CONSUMPTION

- 3.0 meters per 300 ml cartridge;
- 6 meters per 600 ml sausage (10 x 10 mm section)

COLOURS white, grey 111

PACKAGING 300 ml cartridge, 600 ml sausage

CERTIFICATIONS AND MARKINGS



**CHECK THE
TECHNICAL
DATASHEET**
on mapei.com.au

Mapeflex PU 45 FT

Rapid-hardening paintable polyurethane sealant and adhesive with a high modulus of elasticity for movements up to 20%.

APPLICATION extrusion gun

CONSUMPTION

- 3.0 meters per 300 ml cartridge;
- 6 meters per 600 ml sausage (10 x 10 mm section)

COLOURS white, grey 111, black

PACKAGING 300 ml cartridge, 600 ml sausage

CERTIFICATIONS AND MARKINGS



**CHECK THE
TECHNICAL
DATASHEET**
on mapei.com.au

Mapesil AC

Mould-resistant pure acetic silicone sealant for movements up to 25%.

APPLICATION extrusion gun

CONSUMPTION 3.1 meters per 310 ml cartridge (10 x 10 mm section)

COLOURS 34 colours and transparent

PACKAGING 310 ml cartridges

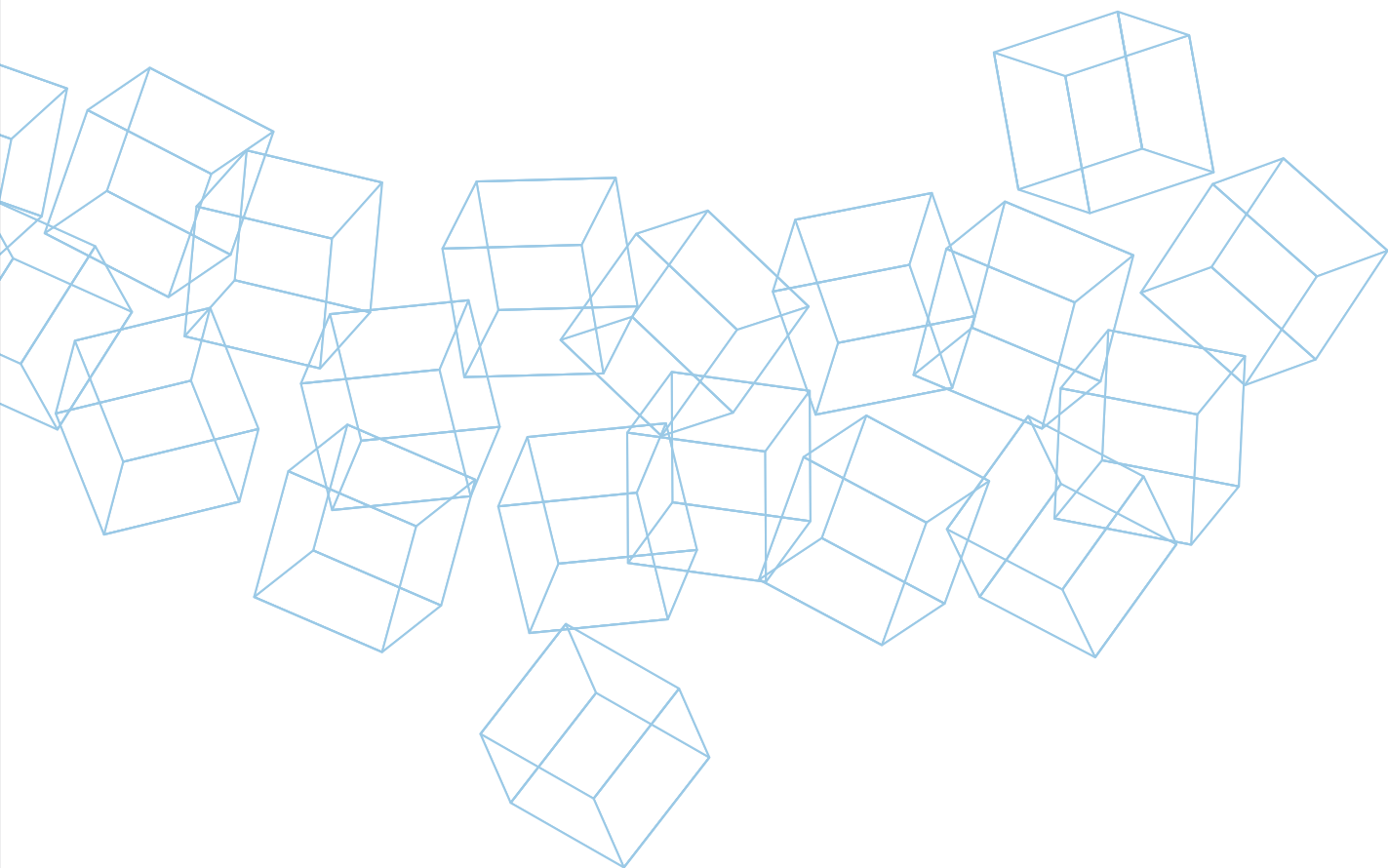
CERTIFICATIONS AND MARKINGS



**CHECK THE
TECHNICAL
DATASHEET**
on mapei.com.au







POLYGLASS

Antiradice Light P

Light weight plastomeric waterproofing membrane with excellent performance indicated for use as a barrier against puncture by plant roots.



APPLICATION torch applied

PACKAGING 1 x 10 m rolls

CHECK THE
TECHNICAL
DATASHEET
on mapei.com.au

Evolight S P

EVOLIGHT S P and **EVOLIGHT S P MINERAL** are plastomeric waterproofing membranes with outstanding performance. They are made using a latest generation distilled bitumen-based compound, ultra-light REOXTHENE technology, Evalith™ XTR polyester spunbond from Johns Manville, stabilized and reinforced with longitudinal glass fiber threads.



APPLICATION torch applied

PACKAGING

- 3 mm x 10 m roll base sheet
- 4.5 mm x 10 m roll mineral top sheet

CHECK THE
TECHNICAL
DATASHEET
on mapei.com.au

Granules Grey H18

Polyglass Granules are high quality mineral granules as used on mineral-surfaced bitumen membrane products. They are tough, dense, weather and UV resistant..



APPLICATION protecting bitumen membrane detailing and overlaps

PACKAGING 30 kg bags

CHECK THE
TECHNICAL
DATASHEET
on mapei.com.au

Idroplast

A liquid bituminous elastomeric water-based membrane for details bitumen sheet membranes.



**CHECK THE
TECHNICAL
DATASHEET**
on mapei.com.au

APPLICATION roller, brush or spray

PACKAGING 20 kg buckets

Idroprimer

A quick-drying bituminous water-based primer containing selected bitumen.



**CHECK THE
TECHNICAL
DATASHEET**
on mapei.com.au

APPLICATION roller, brush or spray

PACKAGING 20 litre buckets

Mineral Fix

A clear water-based protective fixing varnish for coated granules and slates surfaces.



**CHECK THE
TECHNICAL
DATASHEET**
on mapei.com.au

APPEARANCE milky liquid

DENSITY AT 20 °C 1.00 – 1.05 kg/l

PACKAGING 18 kg drums

Plana P

PLANA P and **PLANA P MINERAL** are elastomeric-plastomeric polymer distilled bitumen waterproofing membranes. Made from compounds that allow the membrane to have excellent elastic, plastic and rubber-like properties.



[CHECK THE
TECHNICAL
DATASHEET](#)
on mapei.com.au

PACKAGING

- 3 mm x 10 m roll base sheet
- 4 kg x 10 m roll mineral top sheet

Polydetail MS

A one-pack MS Polymer sealant designed for sealing, repairing and achieving technical details such as flashing, skylights, guttering, chimneys, drains, etc.



[CHECK THE
TECHNICAL
DATASHEET](#)
on mapei.com.au

PACKAGING

boxes of 20 x 600 ml sausages

Polydren PP 500

Non-woven geotextile to be used as compensation, levelling, protection and filter layer in conjunction with Mapeplan PVC membranes.



[CHECK THE
TECHNICAL
DATASHEET](#)
on mapei.com.au

PACKAGING

2 x 50 m rolls

Polyethylene Air Vents

Air vents to be used in conjunction with Polyglass roof membrane systems.



CHECK THE
TECHNICAL
DATASHEET
on mapei.com.au

PACKAGING 25 vents /box

Polyfond Kit Drain

A protection and drainage system made from high-density extruded polyethylene (HDPE) laminated with a polypropylene needle-punched nonwoven fabric drainage cell.



CHECK THE
TECHNICAL
DATASHEET
on mapei.com.au

PACKAGING 2 x 20 m roll

Polyprimer HP 45 Professional

A bituminous primer containing oxidised bitumen and select fast drying solvents.



CHECK THE
TECHNICAL
DATASHEET
on mapei.com.au

APPLICATION spray, roller or brush

PACKAGING 20 litre bucket

Polyvent

A first layer bitumen membrane for the application on roofs with strong thermal expansion or on flat roof as a vapour diffusion layer.



[CHECK THE
TECHNICAL
DATASHEET](#)
on mapei.com.au

PACKAGING 1 x 20 m roll

Spider P SA

Self adhesive reinforced bitumen waterproofing membrane system.
The reinforcement provides excellent dimensional stability, mechanical performance and good working capabilities



SIZE

- 15 m x 1 m base sheet
- 10 m x 1 m mineral top sheet

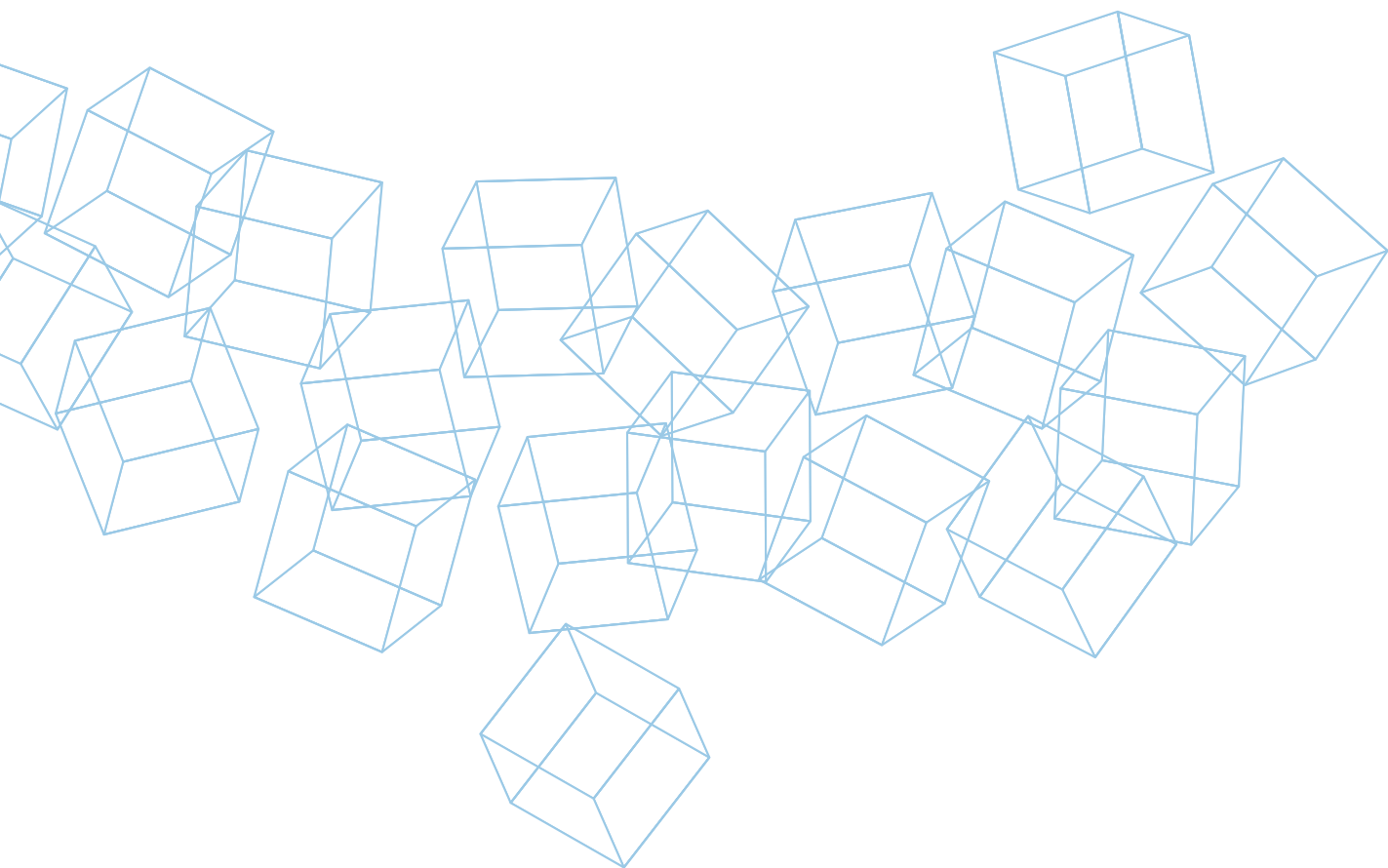
THICKNESS

- 2 mm thick base sheet
- 3.5 mm mineral top sheet

[CHECK THE
TECHNICAL
DATASHEET](#)
on mapei.com.au







ADMIXTURES FOR WATERPROOFING CONCRETE

Idrocrete KR 1000

Powder crystallising admixture for waterproofing concrete.



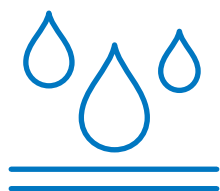
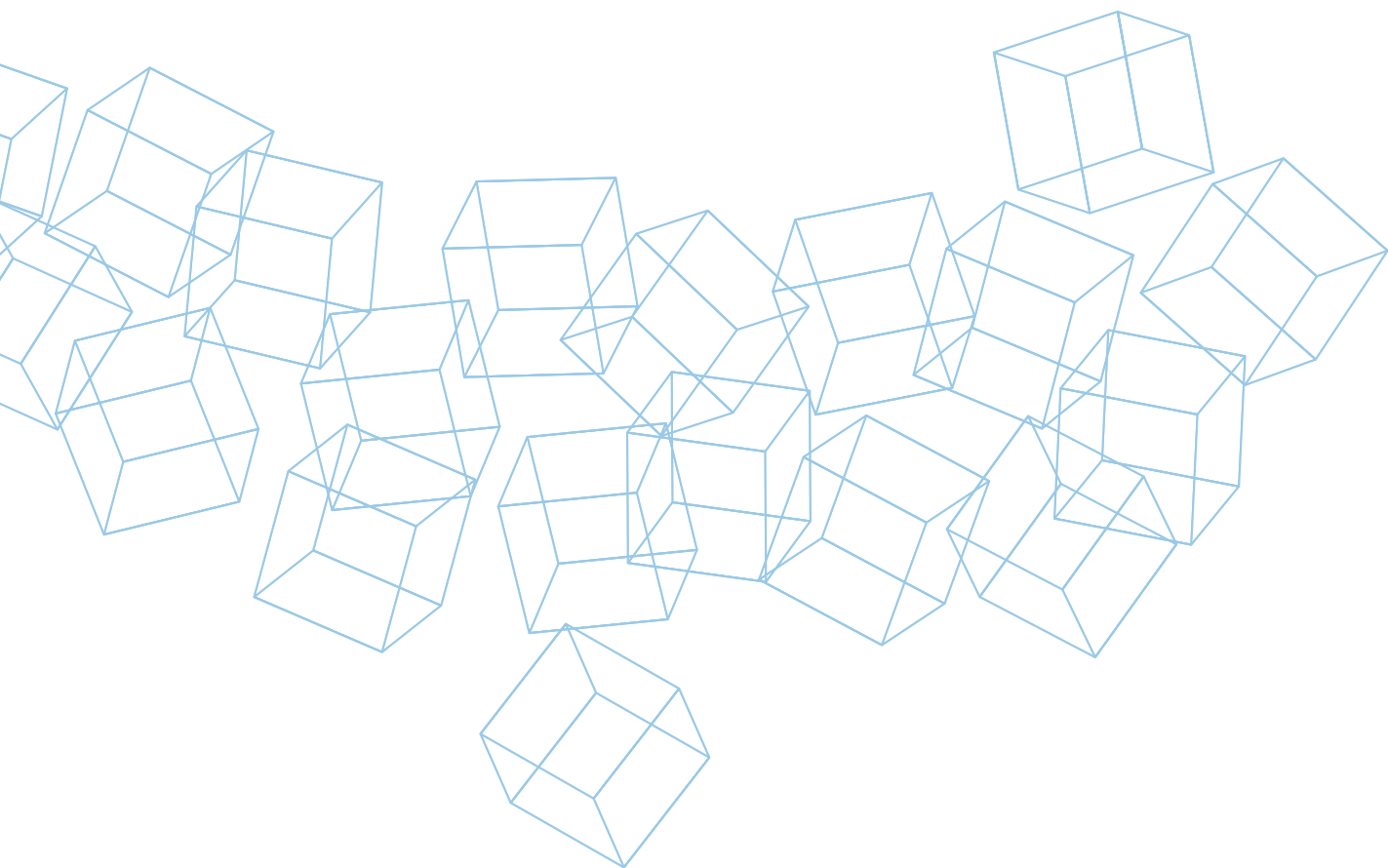
DOSAGE from 1 – 3 kg for every 100 kg of cement

PACKAGING 20 kg bag and 4 kg box containing
4 water-soluble sachets

**CHECK THE
TECHNICAL
DATASHEET**
on mapei.com







WATER-REPELLENT PRODUCTS FOR THE PROTECTION OF CONCRETE

Planiseal WR 100

Ready-mixed pure silane-based, hydrophobising, protective, migrating liquid applied on the surface of reinforced concrete structures in two coats.

APPLICAZIONE low-pressure *airless* pump or roller

CONSUMPTION 0.1 – 0.2 kg/m² per coat, depending on the porosity of the substrate

PACKAGING 5 kg tanks

CERTIFICATIONS AND MARKINGS



**CHECK THE
TECHNICAL
DATA SHEET**
on mapei.com.au

Planiseal WR 85 Gel

Ready-mixed, hydrophobising, protective, migrating, silane-based, thixotropic gel applied on the surface of reinforced concrete structures.

APPLICAZIONE high pressure *airless* pump or roller

CONSUMPTION 0.35 kg/m² (may vary depending on roughness, and porosity of the substrate)

PACKAGING 15 kg drums

CERTIFICATIONS AND MARKINGS



**CHECK THE
TECHNICAL
DATA SHEET**
on mapei.com.au

Antipluvial W

Colourless water-repellent impregnator treatment based on silane and siloxane compounds in water emulsion.

APPLICATION roller, brush or spray

CONSUMPTION 0.2 – 1 kg/m² (depending on the porosity of the substrate)

COLOUR milky white

PACKAGING 10 kg

CERTIFICATIONS AND MARKINGS



**CHECK THE
TECHNICAL
DATASHEET**
on mapei.com

EVERYTHING'S OK, WITH MAPEI

Mapei Australia Pty Ltd

180 Viking Drive, Wacol,
Brisbane 4076, Australia
+61 7 3276 5000
sales@mapei.com.au
mapei.com.au

