



NO. 26 AUGUST 2017

MAPEI SPONSORED CYSTIC FIBROSIS 6500 SANTA SPEEDO SHUFFLE THAT RAISED OVER \$157 000 FOR THIS CANBERRA CHARITY



MAPEI sponsored the team from the Canberra TAFE as well as supplying all runners/walkers with singlets for the event which was held on the last Sunday of July.

Over \$157 000 was raised for this important charity event.

Next year's event is scheduled for Sunday 29th July 2018 for anyone that would like to become involved!

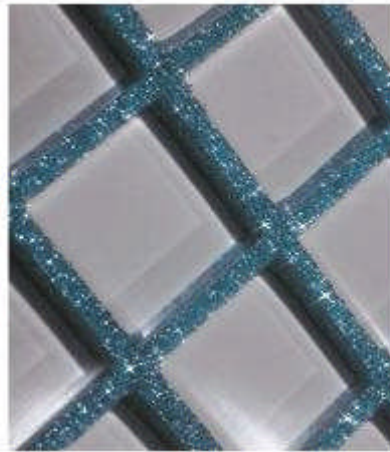
PRODUCT SPOTLIGHT

KERAPOXY DESIGN

Kerapoxy Design is a two-component, decorative, acid resistant epoxy grout ideal for the installation of glass mosaics.

- Internal and external applications
- Wall and floor
- Acid resistant bond to most substrates

- Recommended for pools containing spa or sea water
- Repairing existing degraded grout by removing all loose areas and to a minimum depth of 3mm
- Create floors, walls and benchtops in compliance with hygiene and food standards
- Mix with **MapeGlitter** to create special grout effects
- **Available in 15 exciting colours from the Mapei Coloured Grout Range**



[Click here or on Product Image to read the Technical Data Sheet](#)

REALTA INTERNATIONAL MAGAZINE

REALTA INTERNATIONAL MAGAZINE NO. 63

The latest edition is now available to read online.

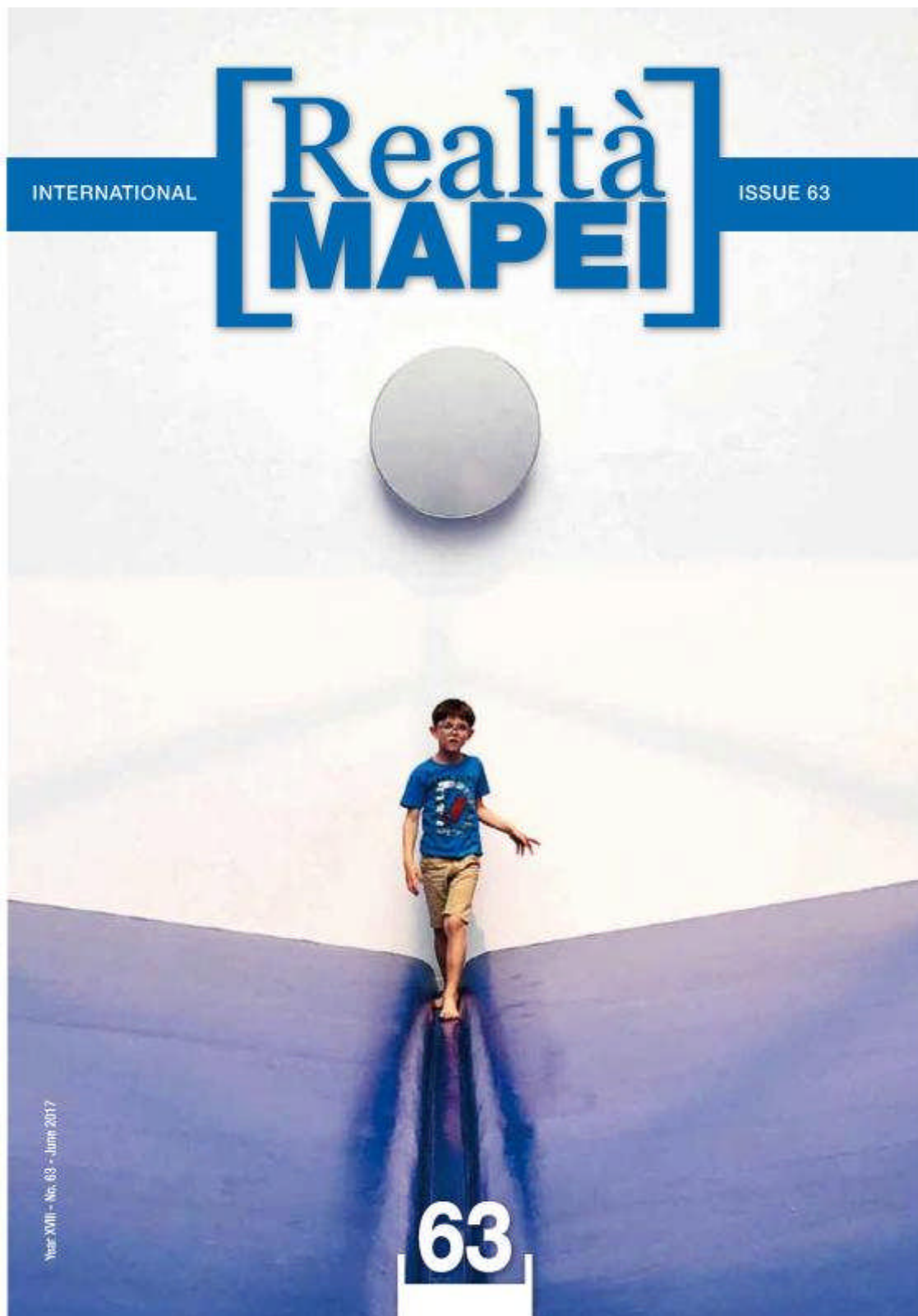
Read all about the International Trade Fairs and Exhibitions where Mapei has exhibited.

This edition is full of project references, technical articles, interviews, product information, sport as

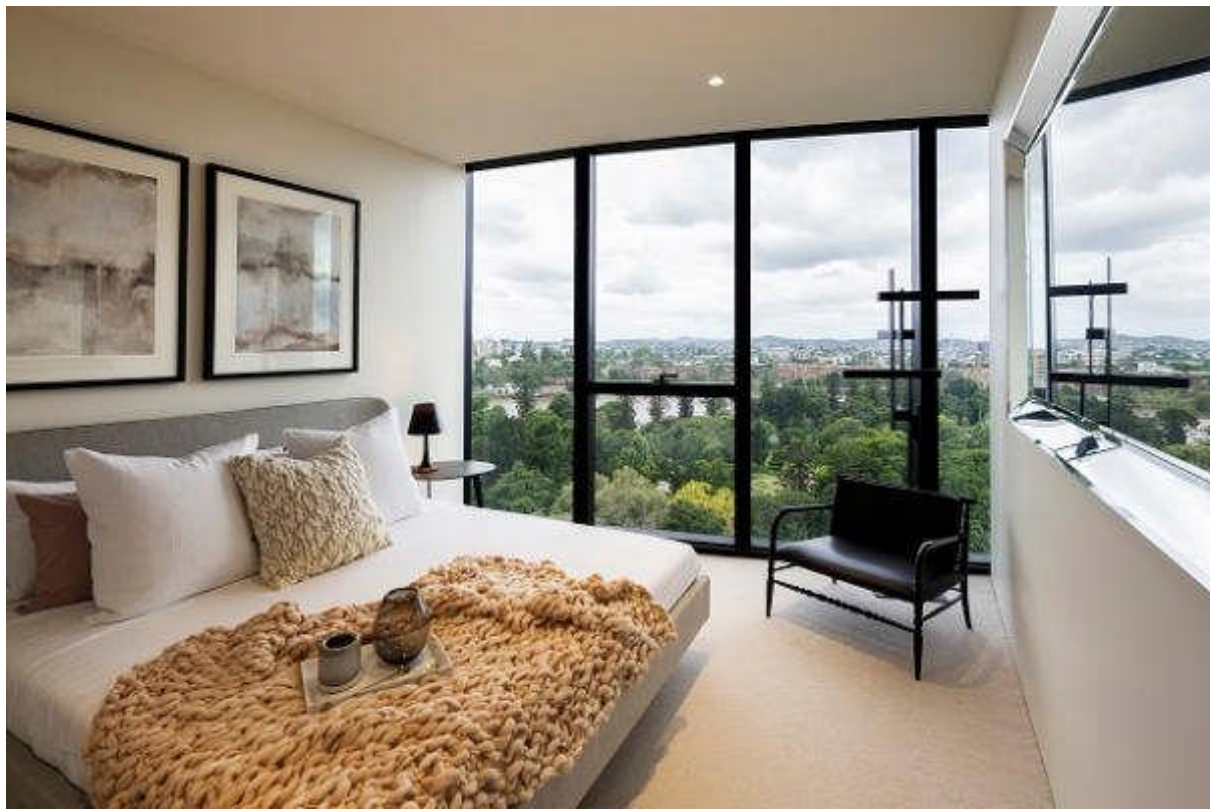
well as a section on Mapei's Sassuolo teams - Ladies team is now in Serie A
Read online or if you would like a copy posted to you each quarter then complete the registration form on our website.

Happy reading!

[Click to read online](#)



PROJECT REFERENCE

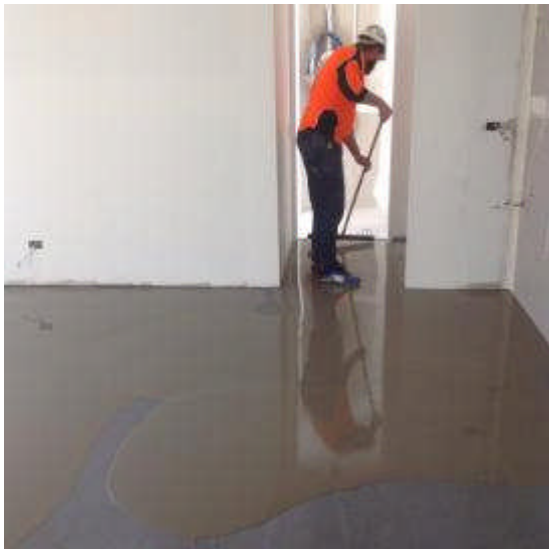


ABIAN APARTMENTS BOTANIC GARDENS BRISBANE

Sunland Group's **Abian Botanic Gardens** is a 40-storey residential skyscraper recently completed in Brisbane, located adjacent to the City Botanic Gardens. Containing 150 units, the project is one of Brisbane's few luxury high-rise developments in recent years. With an average apartment price of AUD\$1.6 million (USD\$1.2 million), the building is a towering reminder of the demand for urban living that is fuelling downtown growth not only in Australian cities, but around the globe.

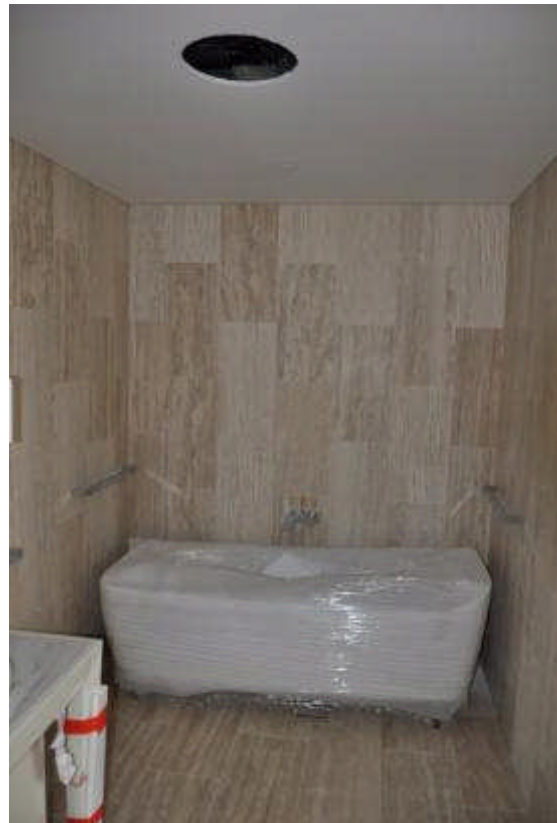
Construction on the tower began in 2014 and was only recently completed in early 2017.





Substrate Preparation

To prepare the concrete flooring for the Travertine tiles, the tiling contractor firstly applied a bonding primer using **Eco Prim T Plus** (solvent-free acylic primer in water dispersion with a very low emission level of VOC) and once dry applied pours of **UC Leveller** (fast hardening levelling smoothing compound for thicknesses from 3mm to 70mm)

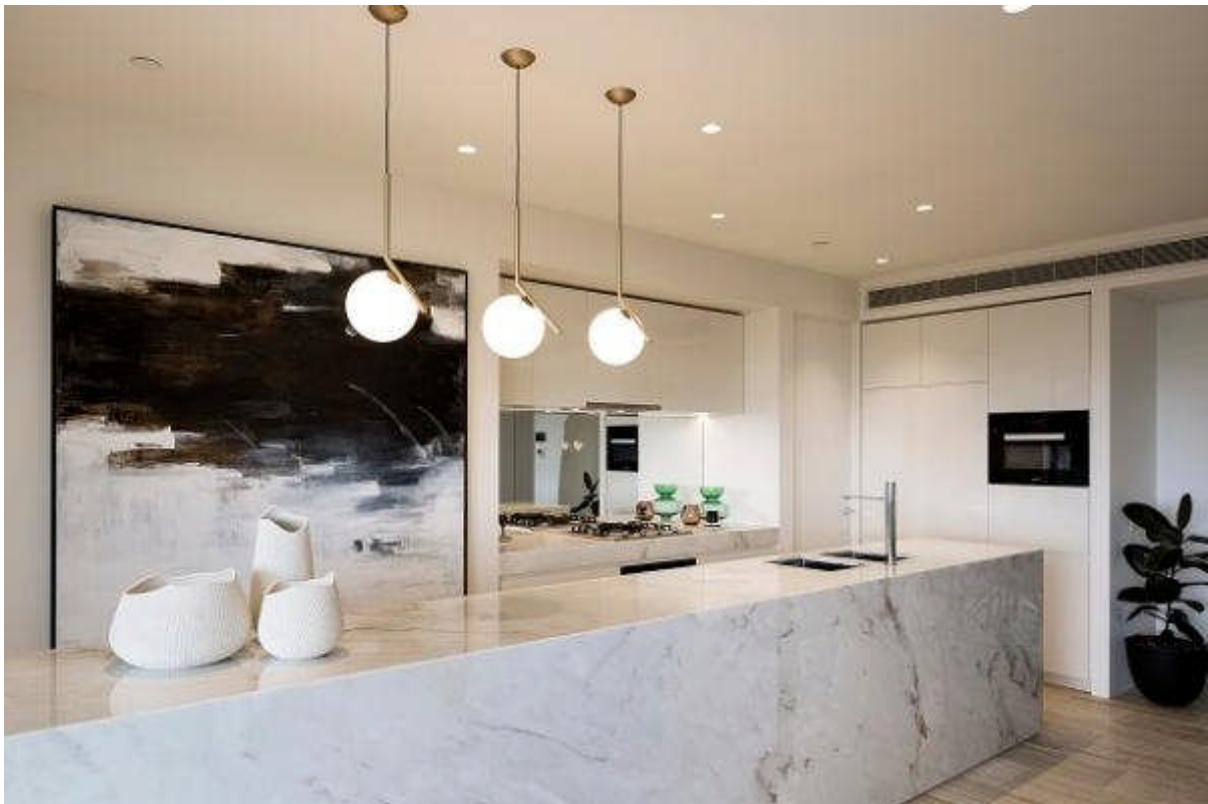


Travertine Installation

to over 8300m2.

Once the levelling compound was completely dry any small areas requiring levelling were rectified using **Mapecem Quickpatch** (high performance, fast setting cementitious compound used for patching concrete surfaces). The tiling contractor used **Ultrabond Eco V4 SP** (universal adhesive in water dispersion for installing most resilient floorcoverings including acoustic matting in dry areas) to install the acoustic matting to ensure complete soundproofing of the apartments.

Over 18 000m2 of 600x300 Travertine tiles were installed on floors and walls in all of the high-end apartments. **Keraflex Maxi S1** tile adhesive was selected to ensure a perfect installation. Grouting was extremely important to the final finished appearance so the selection of **Ultracolor Plus** premium grout was essential. **Ultracolor Plus** is a high performing, anti-efflorescence, quick setting and drying grout for grouting joints from 2 to 20mm. All joints were sealed with Mapei's **Mapesil AC** silicone sealant resulting in a perfect installation system.



TRAINING COURSES

MAPEI TRAINING AT YOUR PREMISES

Interested in inviting customers to your premises for a Product Training Session with MAPEI?

Contact your local Mapei representative or email sales@mapei.com.au and request a Mapei staff member contact you to discuss.

MAPEI can assist with flyers and posters to display in your showroom and warehouse to encourage your customers to attend as per this

PRODUCT SPOTLIGHT



Ultraplan Fast Track

Ultra-Fast Drying Levelling Compound



- Interior levelling 1 to 10mm per pour
- High resistance to loads and traffic
- Ideal for use in areas where a fast installation is required
- Easily workable
- Self smoothing
- High bond strength
- Ultra-fast drying
- Install flooring after 2 hours
- Eliminates surface imperfections
- Can be used under ceramics, carpet, vinyl, LVT, rubber and timber flooring

ULTRAPLAN FAST TRACK

Thickness per coat	from 1 to 10mm
Waiting time between coats	approx. 1 hour
Pot life	10 to 15 minutes
Setting time	30 minutes
Set to light foot traffic	1 hour
Waiting time to install floorcovering	2 hours
Suitable substrates	concrete, tiles, natural stone
Application temperature	from +5°C - +35°C
Application types	trowel, float or pump
Primer over concrete surfaces	Eco Prim T Plus**
Primer over ceramic/stone	Eco Prim Grip**
Colour	grey
Shelf Life	12 months
Packaging	20kg bag
Consumption	1.6 kg/m ² per mm of thickness
VOC content	<0.1 g/l

** refer data sheet for important information



Scan to download technical data sheet



Click on the image to read the Technical Data Sheet

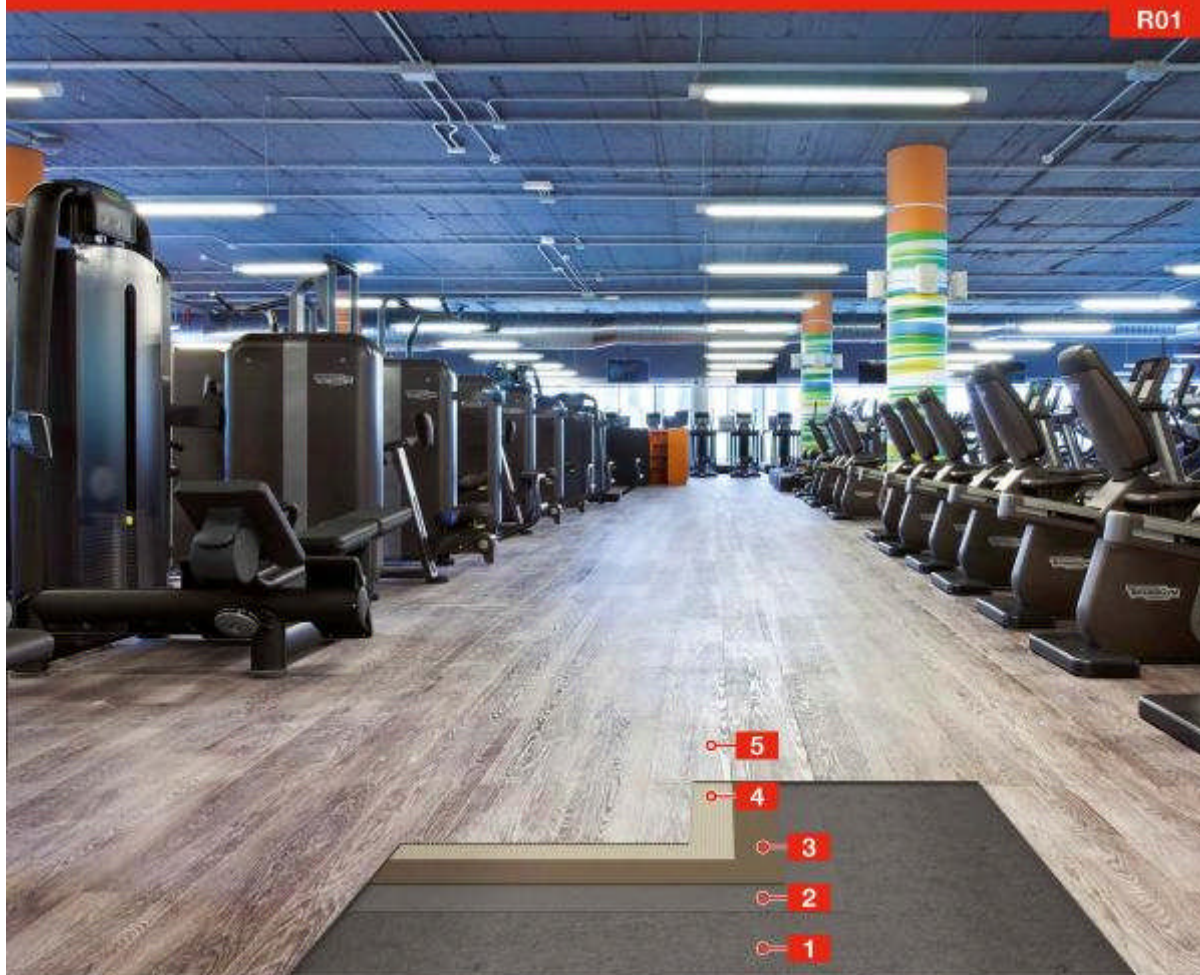
FULLY WARRANTED PRODUCT SYSTEMS

GREEN STAR™ CERTIFIED SYSTEM FOR THE FAST TRACK INSTALLATION OF LVT PLANKS

this system makes it possible
to obtain GREEN STAR™ credits



R01



properly prepared
concrete substrate

1



primer
Eos Prim T Plus

2



levelling compound
Ultraplus Fast Track

3



adhesive
Ultrabond
Eco VS90 Plus

4

LVT floor covering

5

Please refer to the corresponding Work Method Statement for complete list of suitable products and installation information

06/17 REV 1

[Click here to access more Product Systems available on our website](#)



This email was sent to : debbynorgrove@mapei.com.au

This email was sent by: Mapei Australia Pty Ltd
180 Viking Drive, Wacol, QLD 4076

[Update Profile](#) | [One-Click Unsubscribe](#)

Share: [Email](#) [Facebook](#) [Twitter](#) [Google+](#) [LinkedIn](#)