



NO. 25 JULY 2017

CELEBRATING 80 YEARS WITH MAPEI

COMPANY PROFILE

COMPANY PROFILE

80  
years  
1937-2017



## PRODUCT SPOTLIGHT

### ULTRALITE S1 GREY and WHITE - **LIGHTWEIGHT** - 60% MORE YIELD\* - **EASY GLIDE TECHNOLOGY**

One component, high-performance, flexible, lightweight cementitious adhesive with no vertical slip, long open time and extremely high yield.

Easy to apply by trowel with excellent wetting properties, very low emission of volatile organic compounds for ceramic tiles, stone and thin porcelain tiles.

- Bonding all types and sizes of ceramic tiles on uneven internal and external substrates without having to event out the surface before fixing
- Bonding all types of mosaics on internal and external surfaces even in swimming pools
- Bonding natural stone on internal and external surfaces (for stone that is not moisture-sensitive)
- Ideal for bonding thin porcelain tiles on floors and walls including external facades

### EASY GLIDE TECHNOLOGY

**\* 60% MORE YIELD THAN MOST TRADITIONAL CEMENTITIOUS ADHESIVES**

ULTRALITE S1 Grey and White are now available for despatch. Contact your Mapei representative for further information or click on the image above to read the Technical Data Sheet.



[Click on Product Image to read the Technical Data Sheet](#)

## REALTA INTERNATIONAL MAGAZINE

### REALTA INTERNATIONAL MAGAZINE NO. 63

The latest edition is now available to read online.

**Read all about the International Trade Fairs and Exhibitions where Mapei has exhibited.**

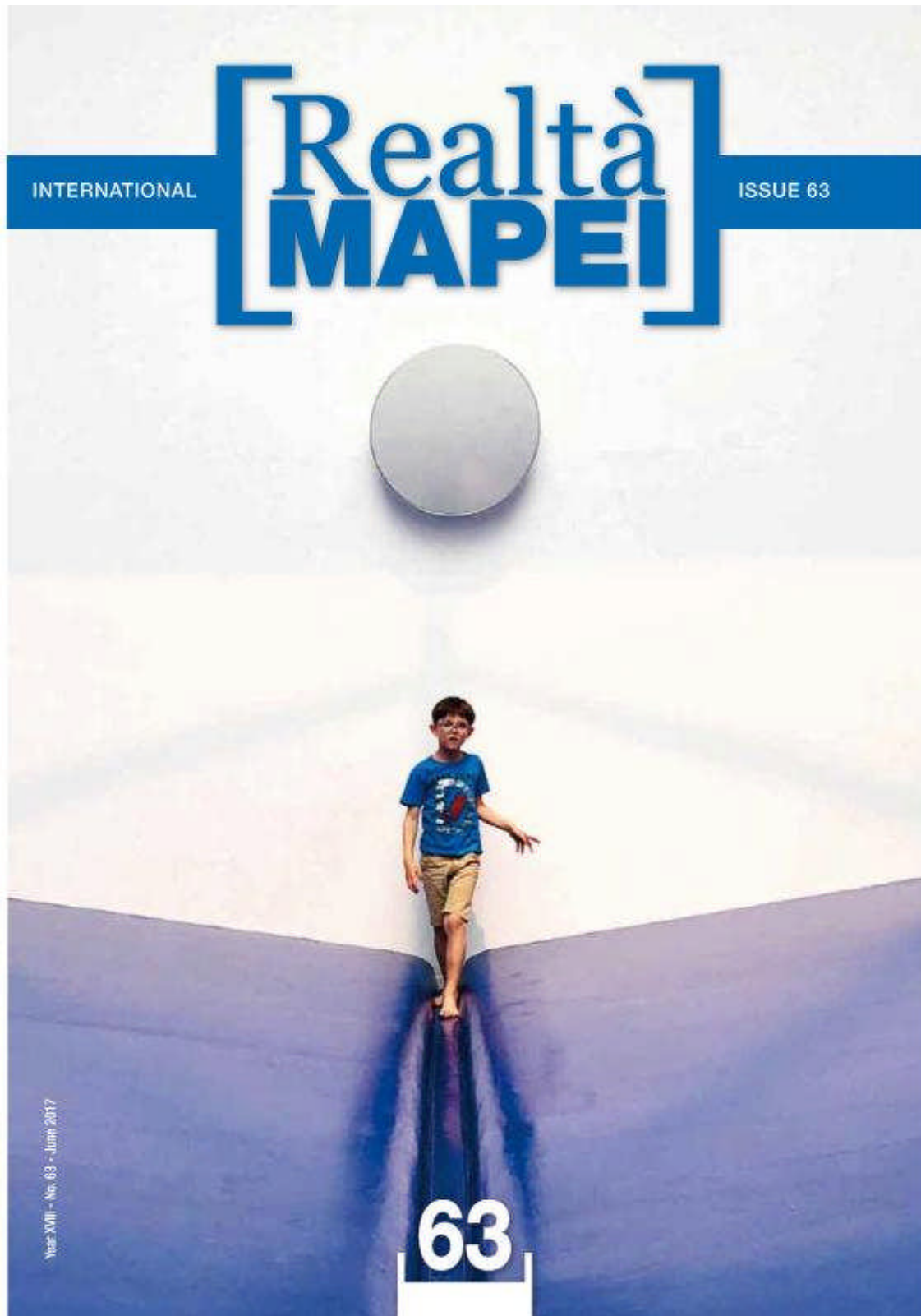
This edition is full of project references, technical articles, interviews, product information, sport as well as a section on Mapei's Sassuolo teams - Ladies team is now in Serie A

Read online or if you would like a copy posted to you each quarter then complete the registration

form on our website.

Happy reading!

[Click to read online](#)



PROJECT REFERENCE

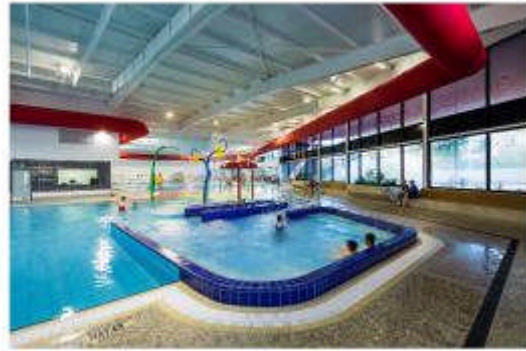
**ARC CAMPBELLTOWN SWIM  
CENTRE - ADELAIDE**



The **ARC Swim Centre** is a complex of an eight lane 25 metre indoor heated lap and swimming pool, children's pool and splash pad, sauna and relaxation area that is operated by the Campbelltown City Council.

Local tiling contractors commenced work on the 25m indoor heated pool, children's pool and splash pad. Existing tiles were removed and contractors repaired the existing concrete walls and floors as well as repairing and reinstalling the control joints using **Kerapoxy** (acid-resistant epoxy grout), **Mapeband TPE** (TPE tape for flexible sealing and waterproofing expansion joints and cracks subject to movement) and **Eporip** (solvent-free epoxy adhesive for sealing cracks in screeds).

**Mapegrout Rapido** (a fast-setting and drying shrinkage-compensated, fibre-reinforced mortar for concrete repair) was applied to seal around the penetrations on the pool floors.



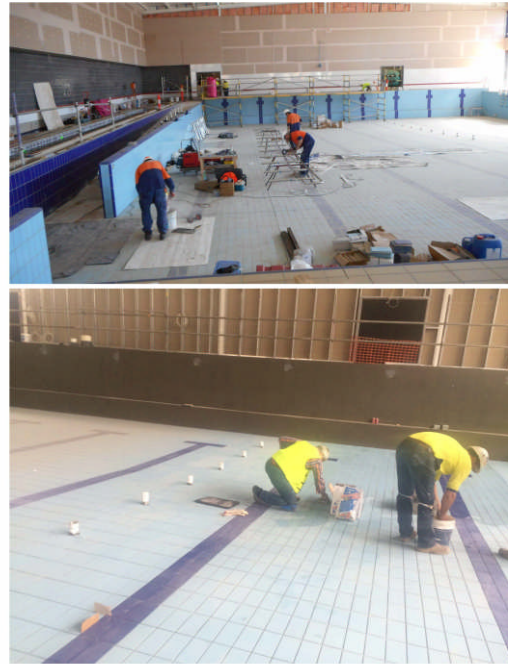
**Planicrete SP** (latex additive used in the preparation of high performance screeds and renders), sand and cement were used to obtain a steadfast render which was applied to all areas, followed by two coats of **Mapelastix Smart** (highly flexible cementitious waterproofing membrane used to protect concrete structure and renders with hairline cracks). Any areas requiring a finer finish were treated with an application of **Planitop Fast 330** (quick-setting, fibre-reinforced cementitious mortar for internal and external floors and walls applied at a thickness from 3-30mm to smooth out irregularities). **Mapetex Sel** (non-woven, macro-holed, polypropylene fabric used to reinforce waterproofing membranes) was embedded into the **Mapelastix Smart** membrane to ensure that the integrity of the pool walls and floor were fully protected prior to the tiling installation.



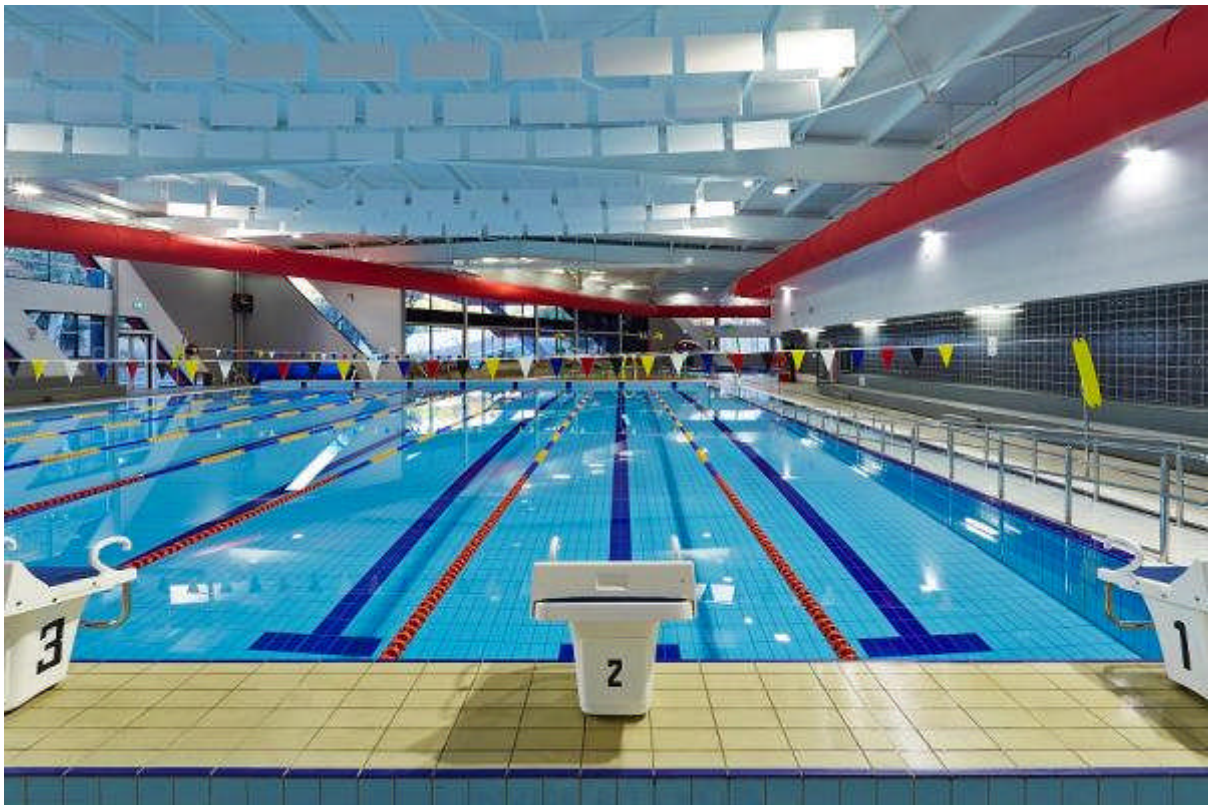
Contractors installed the Metz 119mm x 244mm x 9mm slip-resistant pool tiles to the flooring areas using Mapei's **Kerabond Plus** cementitious adhesive mixed with **Isolastic 50** latex additive. Mixing a latex additive to the cementitious adhesive powder (instead of water) improves the flexibility, deformability and impermeability to the substrate once hydration has occurred,

resulting in a well-bonded tiling project.

Additional tiles were also installed from the Metz pool tile range including rebated finger grip tiles and grate support tiles to the wet decks, satin finish tiles to the wall areas and step tread tiles to all steps and ladders. The pool tiling was grouted with **Ultracolor Plus** – specifically chosen for this project due to the grout's durability in immersed conditions as well as the product's specific anti-efflorescent properties. **Mapesil AC** silicone sealant was selected to form a perfectly elastic gasket in the wall/floor expansion joints. **Mapesil AC** is an ideal sealant for pool environments as it contains properties to resist mould and mildew as well as protection from chemical agents found in pool water.



**To view more Mapei Project References click on the button below the pool image and you will be directed to the Mapei website at [www.mapei.com.au](http://www.mapei.com.au)**



[Click to view more Project References](#)

## TRAINING COURSES

Please email [mapeitrainingVIC@mapei.com.au](mailto:mapeitrainingVIC@mapei.com.au) to register!

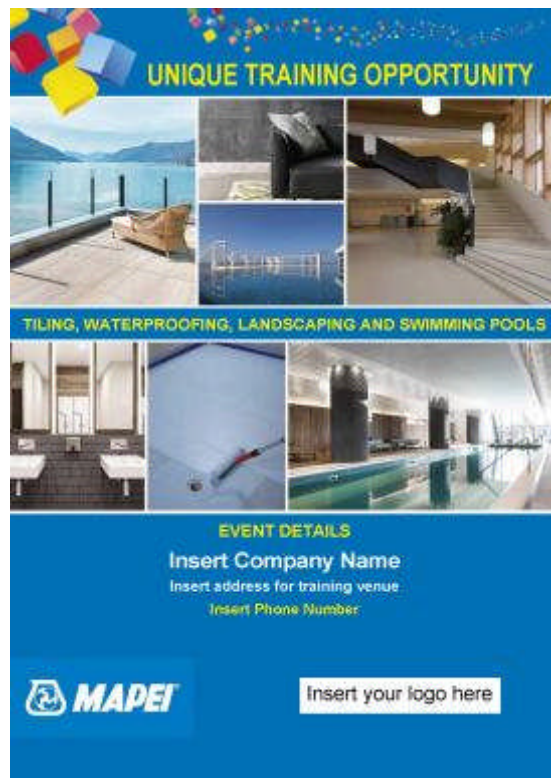
## MAPEI TRAINING AT YOUR PREMISES



***Interested in inviting customers to  
your premises for a Product  
Training Session with MAPEI?***

Contact your local Mapei representative or email [sales@mapei.com.au](mailto:sales@mapei.com.au) and request a Mapei staff member contact you to discuss.

MAPEI can assist with flyers and posters to display in your showroom and warehouse to encourage your customers to attend as per this sample. Add your logo and contact details to complete the flyer.



## PRODUCT SPOTLIGHT

# Ultraplan Fast Track

## Ultra-Fast Drying Levelling Compound



- Interior levelling 1 to 10mm per pour
- High resistance to loads and traffic
- Ideal for use in areas where a fast installation is required
- Easily workable
- Self smoothing
- High bond strength
- Ultra-fast drying
- Install flooring after 2 hours
- Eliminates surface imperfections
- Can be used under ceramics, carpet, vinyl, LVT, rubber and timber flooring

### ULTRAPLAN FAST TRACK

Thickness per coat	from 1 to 10mm
Waiting time between coats	approx. 1 hour
Pot life	10 to 15 minutes
Setting time	30 minutes
Set to light foot traffic	1 hour
Waiting time to install floorcovering	2 hours
Suitable substrates	concrete, tiles, natural stone
Application temperature	from +5°C - +35°C
Application types	trowel, float or pump
Primer over concrete surfaces	Eco Prim T Plus**
Primer over ceramic/stone	Eco Prim Grip**
Colour	grey
Shelf Life	12 months
Packaging	20kg bag
Consumption	1.6 kg/m <sup>2</sup> per mm of thickness
VOC content	<0.1 g/l

\*\* refer data sheet for important information



Scan to download technical data sheet



This email was sent to : [debbynorgrove@mapei.com.au](mailto:debbynorgrove@mapei.com.au)

This email was sent by: Mapei Australia Pty Ltd  
180 Viking Drive, Wacol, QLD 4076

[Update Profile](#) | [One-Click Unsubscribe](#)

Share: