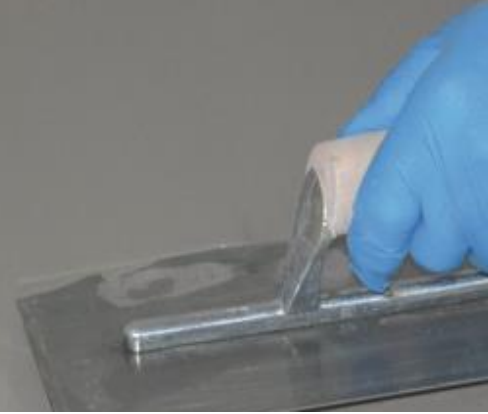


# ULTRAPLAN RENOVATION

Fibre-reinforced levelling compound for interiors - applied from 3 to 40 mm in a single application



## DESCRIPTION

**Ultraplan Renovation** is a fibre-reinforced self levelling compound, designed for use in the refurbishment of existing floors in both commercial and domestic applications that can be hand or pump applied.

## WHERE TO USE

Used for interior levelling, smoothing and filling in differences in thicknesses from 3 to 40 mm on new or existing concrete, screeds, stone, terrazzo and ceramic tiles, old and new timber floors, floor boards, chipboard panels, plywood and parquetry.

**Ultraplan Renovation** is suitable where good resistance to loads is required, also for wheelchair traffic and underfloor and undertile heating systems.

## Preparation of the Substrate

The substrate should be solid, free of dust, loose particles, paint, oil, gypsum residues or other contamination that could compromise the bond. Timber substrates should be clean and solidly fixed, open joints should be sealed with either **Nivorapid** mixed with **Latex Plus** or **Planiprep SC** mixed with **Latex Plus**. Cementitious surfaces that are not sufficiently compacted must be removed or where possible consolidated with **Prosfas** or **Mapeproof 1K Turbo**. Cracks in the substrate should be repaired with **Eporip**.

The substrate should be primed with **Mapeprim SP** or **Eco Prim T Plus** prior to the application of **Ultraplan Renovation**. Timber or particle board substrates are to be primed with **Eco Prim Grip**. Please note that some brands of chipboard contain wax coatings or sealers that must be removed by mechanical means prior to applying a primer. Check the humidity content with a carbide hygrometer or an electric moisture meter to ensure compliance with the Australian Standards before commencing work. Concrete or cementitious surfaces must comply with a minimum surface rating of CSP #3.

For all other forms of substrates and for further Surface Preparation information, please refer to MAPEI's Surface Preparation Requirements brochure – Floor Covering Installation System available on our website [www.mapei.com.au](http://www.mapei.com.au)

### Preparing the mix

Pour a 20 kg bag of **Ultraplan Renovation** into a bucket containing 3.4 - 3.6 litres of clean water and mix with a low speed electric mixer to obtain a homogeneous, lump free mix.

Larger quantities of **Ultraplan Renovation** can be prepared in suitable mixers.

After 2-3 minutes of slacking, the mix should then be restirred and then it is ready for use. Do not add more water to the mix once it has begun to set.

The amount of **Ultraplan Renovation** mixed at any time must be used within 30-40 minutes (at a temperature of +23°C).

## APPLICATION

Apply in a single coat from 3 to 40 mm in thickness. To minimise aeration a spiked roller may be used.

The self levelling properties of **Ultraplan Renovation** will provide a surface ready to accept all kinds of floorcoverings.

Follow all movement joints present in the substrate and form control joints on large areas for alleviating stress. Contact

MAPEI Technical Assistance on Freecall 1800 652666 for more information if required

## CLEANING

While **Ultraplan Renovation** is still wet, hands and tools can be cleaned with water.

## COVERAGE

1.8 kg/m<sup>2</sup> per mm of thickness.

## PACKAGING

20 kg bags.

## STORAGE

12 months in a dry, elevated area and in the original unopened packaging.

## SAFETY INSTRUCTIONS FOR PREPARATION AND APPLICATION

**Ultraplan Renovation** contains cement that when in contact with sweat or other bodily fluids causes irritant alkaline reactions and allergic reactions to those predisposed. During use wear protective gloves and goggles and take the usual precautions for handling chemicals. If the product comes in contact with the eyes or skin, wash immediately with plenty of water and seek medical attention.

For further and complete information about the safe use of our product please refer to the latest version of our Safety Data Sheet that is available from our website [www.mapei.com.au](http://www.mapei.com.au).

PRODUCT FOR PROFESSIONAL USE.

TECHNICAL DATA (typical values)	
<b>TECHNICAL DATA</b>	
Consistency:	fine powder
Colour:	grey
Specific gravity (kg/m <sup>3</sup> ):	1,300
Dry solid content (%):	100
<b>APPLICATION DATA (at +23°C and 50% R.H.)</b>	
Mixing ratio:	3.4 - 3.6 litres of water per 20 kg bag
Thickness per coat:	3 to 40 mm
Self-levelling:	yes
Specific gravity of mix (kg/m <sup>3</sup> ):	2,100
pH of the mix:	approx. 12
Application temperature range:	from +5°C to +30°C
Open time:	30-40 minutes
Setting time:	50-90 minutes
Walkable:	4-6 hours
Waiting time before bonding:	1-3 days depending on the thickness
<b>FINAL PERFORMANCES (at +23°C and 50% R.H.)</b>	
Compressive strength (N/mm <sup>2</sup> ):	
– after 1 day:	15
– after 3 days:	20
– after 7 days:	25
– after 28 days:	28
Flexural strength (N/mm <sup>2</sup> ):	
– after 1 day:	3
– after 3 days:	4
– after 7 days:	4.5
– after 28 days:	6
Resistance to abrasion :	
– after 28 days:	2.5

## WARNING

*Although the technical details and recommendations contained in this product data sheet correspond to the best of our knowledge and experience, all the above information must, in every case, be taken as merely indicative and subject to confirmation after long-term practical application; for this reason, anyone who intends to use the product must ensure beforehand that it is suitable for the envisaged application. In every case, the user alone is fully responsible for any consequences deriving from the use of the product.*

Please refer to the current version of the Technical Data Sheet, available from our website [www.mapei.com.au](http://www.mapei.com.au).

## LEGAL NOTICE

The contents of this Technical Data Sheet ("TDS") may be copied into another project-related document, but the resulting document shall not supplement or replace requirements per the TDS in force at the time of the MAPEI product installation. The most up-to-date TDS can be downloaded from our website [www.mapei.com.au](http://www.mapei.com.au).



ANY ALTERATION TO THE WORDING OR REQUIREMENTS CONTAINED OR DERIVED FROM THIS TDS EXCLUDES THE RESPONSIBILITY OF MAPEI.

4013-05-2019-AUS

Any reproduction of texts, photos and illustrations published here is prohibited and subject to prosecution

