

MaPeWrap EQ System

The certified anti-seismic protection system

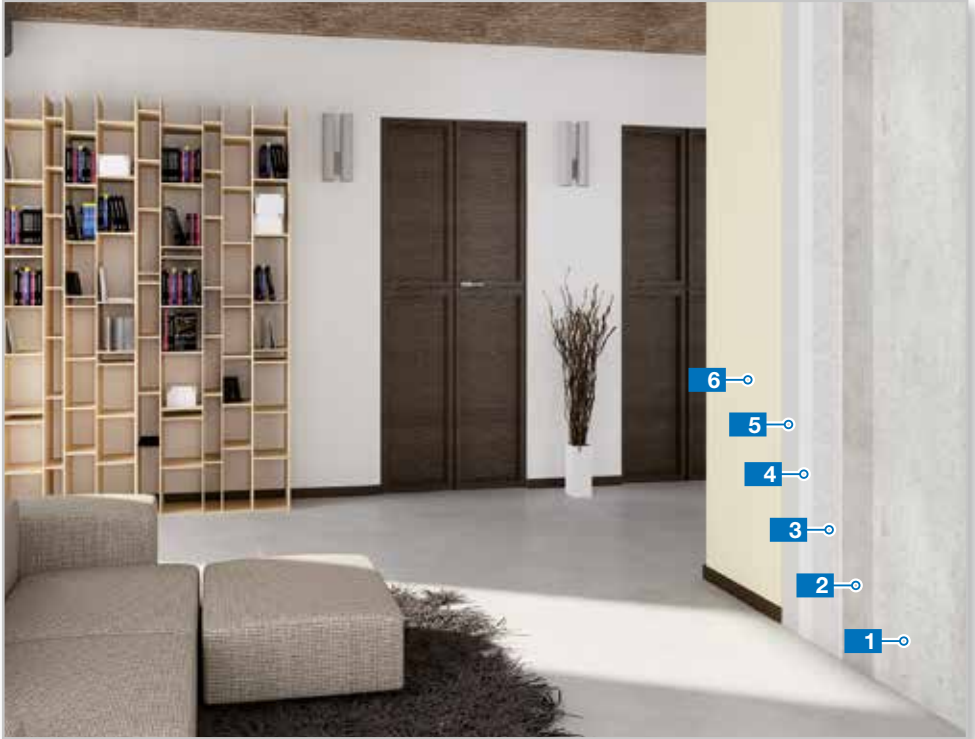


MaPeWrap EQ System...
... the sure and safe
answer in the event
of earthquakes



WHY CHOOSE THE MAPEWRAP EQ SYSTEM

“Anti-tipping” protection for non structural walls



1 Render after removing the existing paint

2 Adhesive
MapeWrap EQ Adhesive

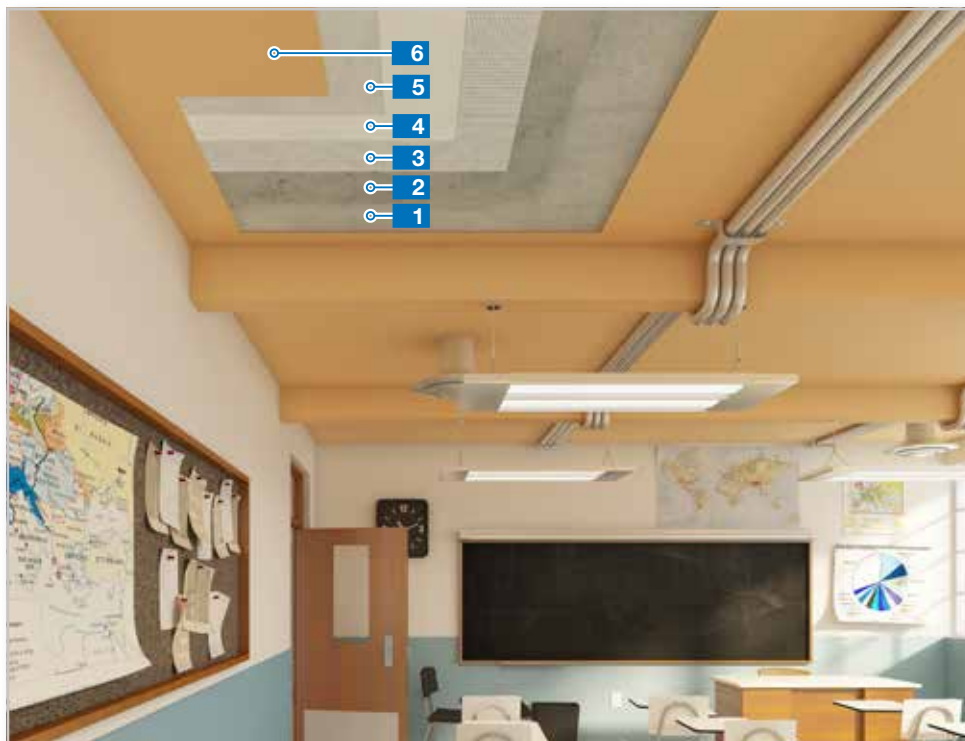
3 Reinforcing fabric
MapeWrap EQ Net
embedded in
MapeWrap EQ Adhesive

4 Smoothing compound
Planitop 200

5 Primer
Malech

6 Finish
Dursilite Matt

“Anti-collapse” protection for ceilings



1 Existing render

2 Adhesive
MapeWrap EQ Adhesive

3 Reinforcing mesh
MapeWrap EQ Net
embedded in
MapeWrap EQ Adhesive

4 Smoothing compound
Planitop 200

5 Coloured acrylic base coat
Dursilite Base Coat

6 Water-based paint
Dursilite

“ANTI-TIPPING” APPLICATION STEPS



1

Remove all paint from the substrate



2

Apply the 1° layer
of **MapeWrap EQ Adhesive**



3

Apply **MapeWrap EQ Net**

(hems along horizontal edges and overlaps along the sides at least 10 cm wide)



4

Apply the 2° layer
of **MapeWrap EQ Adhesive**



5

Apply a skim coat of **Planitop 200**

WHAT IS THE MAPEWRAP EQ SYSTEM?



IT IS A PROTECTION SYSTEM FOR SECONDARY PARTITIONS

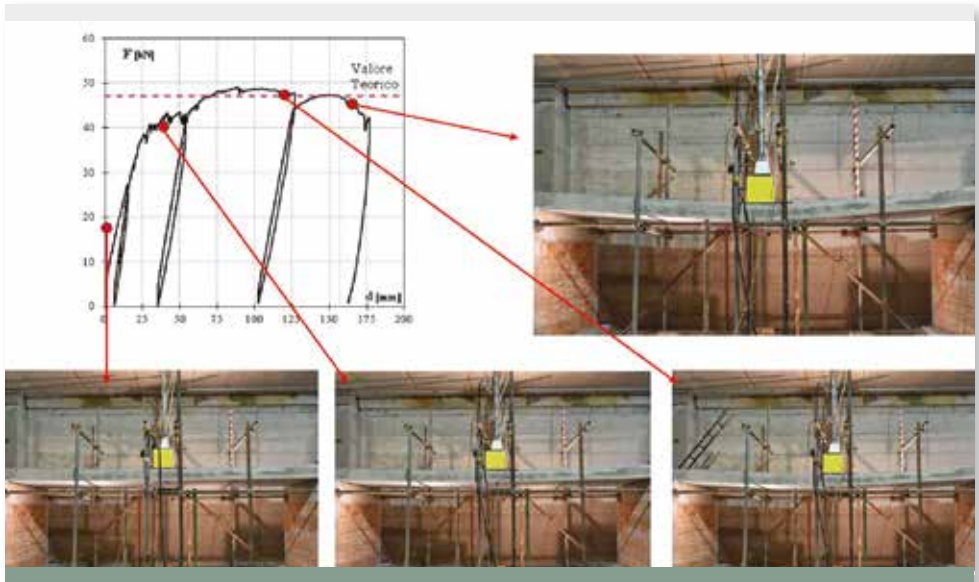
(non structural walls and ceilings) made up of:

- **MapeWrap EQ Net**
Primed bi-directional glass fibre fabric.
- **MapeWrap EQ Adhesive**
One-component ready-mixed water-based adhesive in polyurethane dispersion.

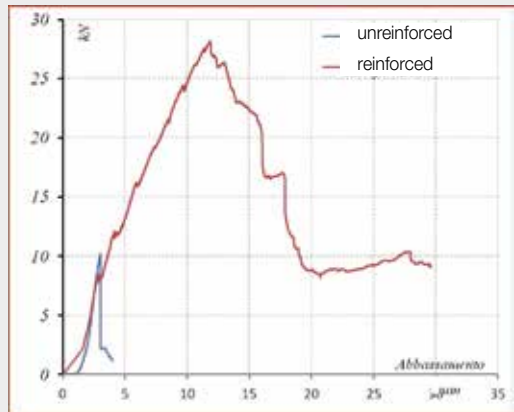
WHY USING IT:

- COMPACT AND QUICK;
- applied over EXISTING PLASTER;
- EASY to apply;
- TESTED and CERTIFIED system;
- unobtrusive;
- doesn't take up any space;
- very low emission of volatile organic compounds (VOC-FREE);
- fire rating B S1 d0 (UNI EN 1351-1).

SYSTEM CERTIFIED BY THE DEPARTMENT OF STRUCTURAL ENGINEERING - "FEDERICO II" UNIVERSITY OF NAPLES



Test on a full-scale brick-cement floor with ANTI-COLLAPSE strengthening



Anti-tipping protection for buffer and dividing walls subjected to orthogonal flexure. Increase in deformation capacity of up to 500% without losing any load-bearing capacity.

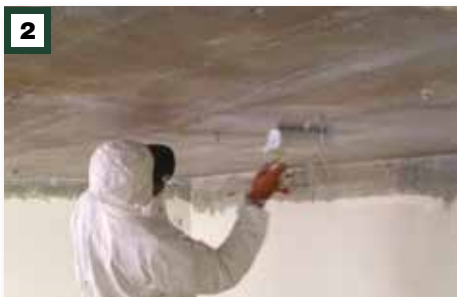
“ANTI-COLLAPSE” APPLICATION STEPS

1



Remove all paint from the substrate

2



Apply the 1° layer
of **MapeWrap EQ Adhesive**

3



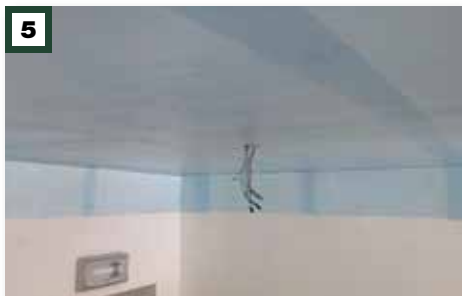
Apply **MapeWrap EQ Net**
(overlap vertical edges by at least 10 cm)

4



Apply the 2° layer
of **MapeWrap EQ Adhesive**

5



Overlap the edges of the fabric
by at least 10 cm

6



Apply a skim coat of **Planitop 200**



● **Technical documentation**

From the technical area menu you can view the technical documentation divided per product lines and type of document.

HEAD OFFICE
MAPEI SpA
Via Cafiero, 22 - 20158 Milan
Tel. +39-02-37673.1
Fax +39-02-37673.214
Internet: www.mapei.com
E-mail: mapei@mapei.it