

MAPESIL AC ECO

Great results
with small emissions



MAPESIL AC ECO

Same quality, less impact on the environment

Mapei's best-selling acetic sealant, used by millions of clients all around the world, is now available in an **ECO version** thanks to a new manufacturing process and new packaging.

To manufacture the sealant, none of the raw materials in the formulate **require the use of fossil resources**. The whole chain is certified by external bodies to guarantee maximum transparency of **Mapei's** commitment to sustainability at all times. **All the advantages of Mapesil AC technology** remain the same: high elasticity, resistance to mould, durability, perfect adhesion and a comprehensive range of colours.

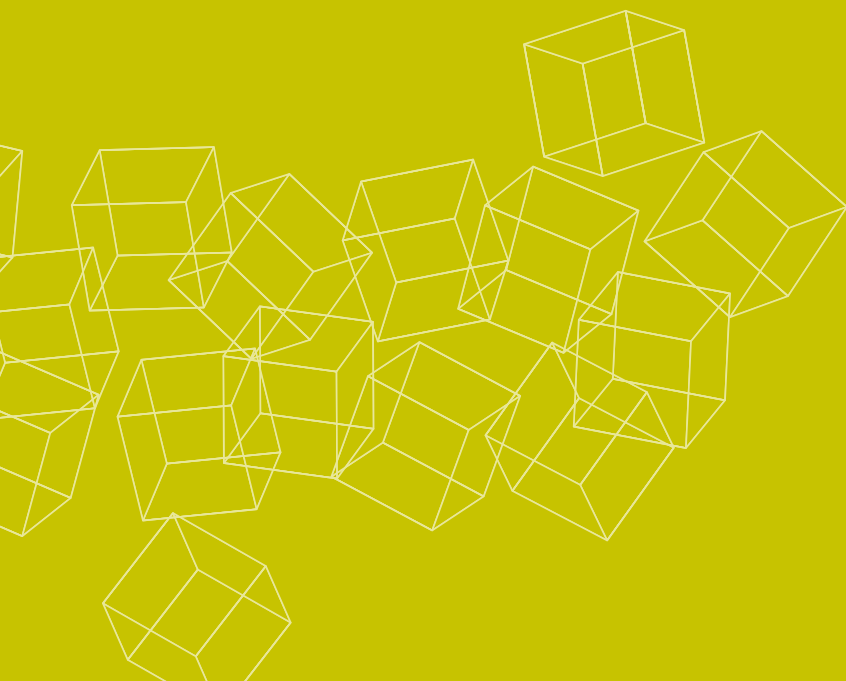
Recycled cartridge

Mapesil AC ECO comes in cartridges made from at least **50%** post-consumption **recycled plastic**. With millions of cartridges produced around the world every year, halving the use of virgin plastic for packaging means the benefit to the environment is truly outstanding.

Up to 25% lower emissions

The manufacturing process, which requires no fossil resources and uses cartridges made from recycled materials, leads to a reduction of **up to 25% of CO₂ emissions** compared with traditional acetic silicone sealant.

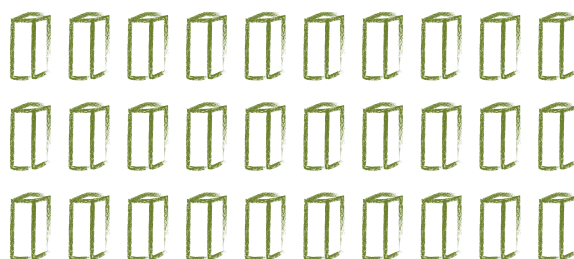
A concrete change that adds to the numerous innovations introduced by **Mapei** into its products to make them even more environment-friendly. Yet another opportunity for those striving for an **increasingly sustainable building industry**.



Growing in sustainability



1 tree for
every 30
shower
enclosures



It is easy to calculate the amount of CO₂ saved by using **MapeSil AC ECO** instead of traditional silicone sealant: 1 tree for every 30 shower enclosures installed*.

Calculating its impact

The calculation is based on the installation of a built-in 120 cm shower with 3 walls 220 cm high.

| | |
|--------------------------------------|---------------|
| Sealing | 580 linear cm |
| Sealant consumption | 150 ml |
| Savings in CO ₂ emissions | 256 g* |

* The environmental benefit of MapeSil AC ECO, applied in 30 shower enclosures, corresponds to the annual amount of CO₂ absorbed by a tree.



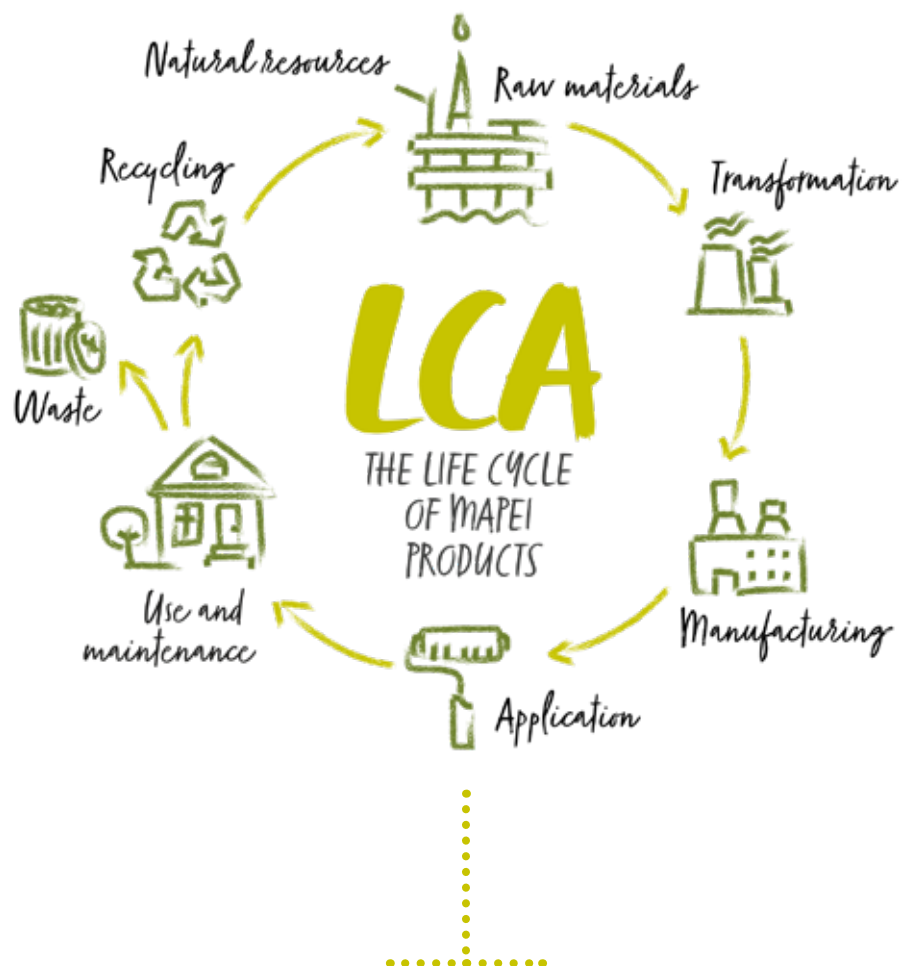
50% ^{minimum} of recycled plastic



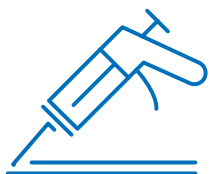
0 fossil resources



-25% CO₂ emissions



The analysis of a product's life cycle is an evaluation of its impact on the environment during every stage of its life.



Mapesil AC ECO

DESCRIPTION

Pure acetic silicone sealant, solvent-free, resistant to mould, manufactured without using fossil raw materials.



CHARACTERISTICS



Strong and durable



Resistant to mould



Solvent-free



High elasticity



No fossil resources used

TYPICAL AREAS OF USE

- Sealing glass, ceramic and anodised aluminium; in combination with **Primer FD** adhesion promoter can also be used on concrete, wood, metal, painted surfaces, plastic and rubber.
- Sealing expansion, contraction and fillet joints subject to movements of up to 25%.
- Forming perfectly elastic seals between construction elements in bathrooms, kitchens, swimming pools and damp environments in general.

ADVANTAGES

- **Manufactured without using fossil raw materials.**
- **Packed in recycled plastic cartridges.**
- Very low emission of volatile organic compounds.
- Certified for all uses in the building industry.
- Highly durable, remains resistant over time.
- Impermeable to water and gases.
- Resistant to high temperatures.
- Compatible with slightly acidic and basic substances.
- Range of colours coordinated with the **"Mapei Coloured Grouts"** collection.

CERTIFICATION AND MARKING



PACKAGING

310 ml cartridges.

CONSUMPTION

3.1 linear meters per 310 ml cartridge (10x10 mm section).

COLOURS



100 White



103 Moon White



110 Manhattan 2000



111 Silver Grey



112 Mid Grey



113 Cement Grey



114 Anthracite



130 Jasmine



132 Beige 2000



142 Brown



120 Black



999 Transparent

The colors shown are indicative and may vary due to printing reasons.

EVERYTHING'S OK WITH MAPEI

HEAD OFFICE
MAPEI SpA
Via Cafiero, 22 - 20158 Milan
+39-02-37673.1
mapei.com
mapei@mapei.it

