

the complete range
of Mapei sealants

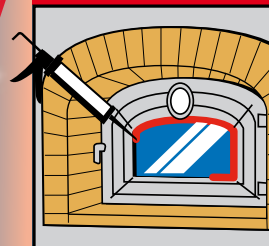
Mapesil 300°C

ELASTIC SEALANT FOR HIGH TEMPERATURES

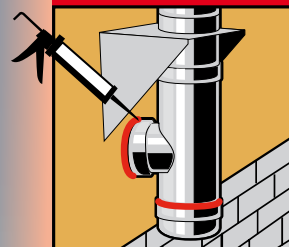
new



ovens
and boilers



flues



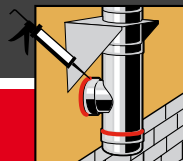
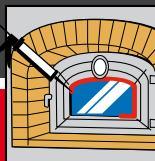
HEADQUARTERS
MAPEI SpA
Via Cafiero, 22 - 20158 Milan
Tel. +39 02 37673.1
Fax +39 02 37673.214
Internet: www.mapei.com
E-mail: mapei@mapei.it

C.P. MK 68730 (CB) 1011



www.mapei.com

Mapesil 300°C

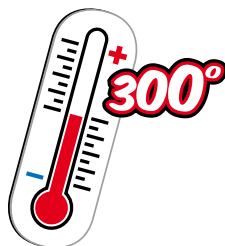


Where to use

Elastic seals on substrates with continuous working temperatures up to 300°C and temporary peak temperatures up to 350°C, such as fillet joints on chimney flues, hot pipe-work, air conditioning conduits, civil and industrial ovens, boilers and seals on motors.

Advantages

- ❑ Resistant to high working temperatures
- ❑ Resistant to thermal shock and fumes
- ❑ Resistant to acid and alkaline environments
- ❑ Improves the draw of chimney flues
- ❑ Remains elastic
- ❑ Practical, quick, safe
- ❑ For building, industrial and motor uses
- ❑ Resistant to oils, lubricant and fuels



It is very important to remember that.....

Elastic sealants are ideal products for filling and sealing gaps and interruptions in surfaces.

Generally, elastic sealants are thermally stable in a temperature range of between -30 and +120°C. Only a few elastic sealants are able to operate at higher temperatures, thanks to them containing special red-coloured, mineral fillers which extend their thermal resistance and the properties of the polymer in the sealant. This is why sealants which resist high temperatures are also called "red silicone".

Mapei, however, offers a black-coloured sealant for use at high temperatures, much easier to integrate with the colours normally used for building materials.

There are also products which resist at much higher temperatures of more than 1000°C, but these are rigid, non-deformable products, such as **Mapeflex Firestop 1200°C**.

Mapesil 300°C, is a sealant which remains permanently plastic in the permitted working temperature range, and absorbs the movements and expansion of the elements which have been sealed.



Colour				
Black				