



MAPETOP & MAPECRETE

Hardening and protecting
concrete floor surfaces





Improving performance and resistance

Hardening and protecting concrete floor surfaces

Floors, by their very nature, are subject to all kinds of stress: weather, vehicular traffic, impacts, abrasions, thermal shocks, chemical aggressions, permanent loads, pedestrian traffic. They are also exposed to the typical aggressions of the industrial or tertiary sector in which they are located.

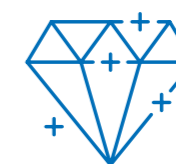
Mapei offers a wide and complete range of **products and systems that can always be integrated with each other**. Aimed at improving the performance and resistance of concrete floor surfaces, they offer simple and reliable solutions. Treated floors become more performing, durable and easy to maintain.



1

RESISTANCE TO DAILY TRAFFIC

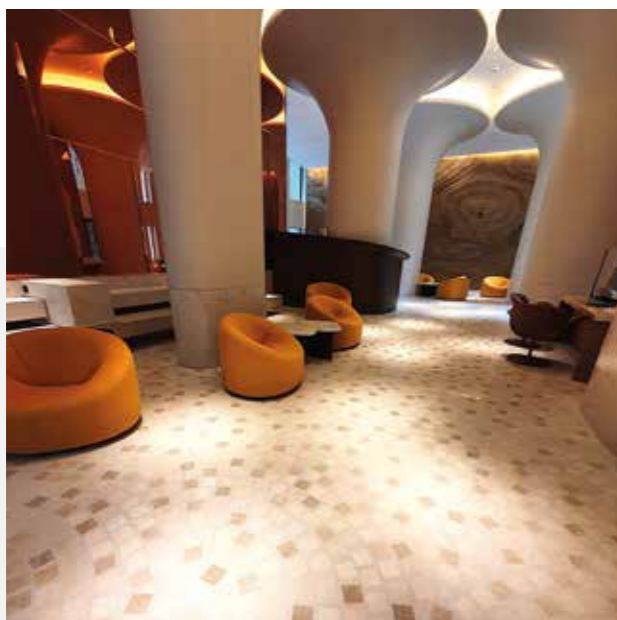
Dry-shake surface hardeners.



2

INCREASING HARDNESS

Liquid surface densifiers.



3

AESTHETIC AND PROTECTION

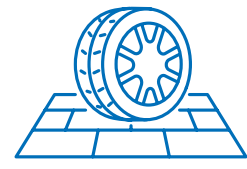
Film-forming hardeners and protectors.



4

AGAINST THE LIQUID PENETRATION

Water and/or oil repellent treatments.



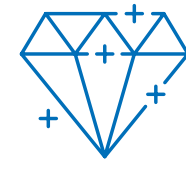
Resistance to daily traffic

Wearing layers for new floors

Dry-shake surface hardeners

Mapetop range: mineral surface hardeners consisting of a ready to use dry mix of hydraulic binders, special additives and specific very hard aggregates, to be applied by sprinkling them on the floor surface. They create hard and compact surfaces that are resistant to wear even in severe conditions. They are available in various colours to give the floor a pleasant aesthetic appearance. Depending on the type of aggregate contained, which characterises its resistance to wear, the range includes three types of products:

- **Mapetop N:** with natural aggregates, for industrial and commercial floors in general;
- **Mapetop S:** with extremely hard synthetic aggregates, for industrial floors subject to severe conditions of use;
- **Mapetop M:** with metallic aggregates, for floor surfaces subjected to extreme conditions of use and frequent impacts.



Increasing hardness

Increasing surface resistance to abrasion

Liquid surface densifiers

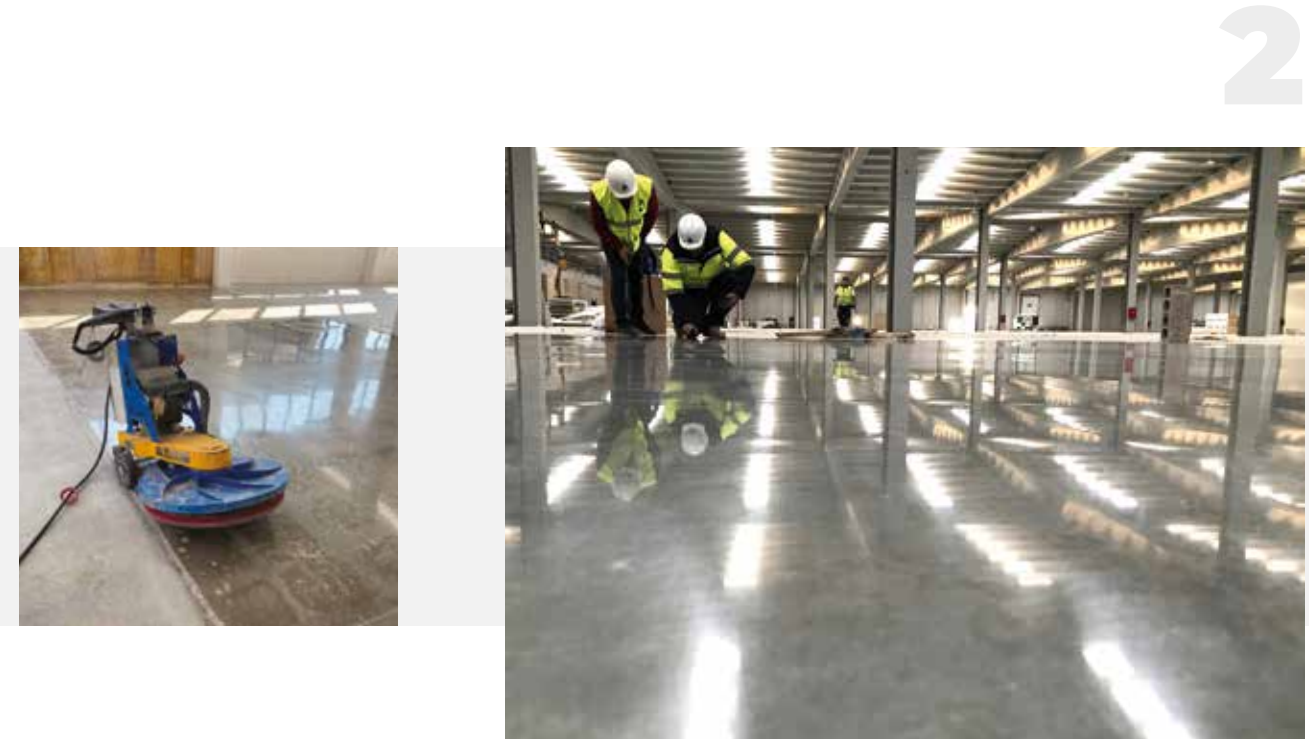
Mapecrete range: liquid products based on silicates and/or additives and polymers, to be applied on hardened flooring, whether recently casted or already existing. The silicate contained in the product reacts with the free lime present in the concrete, forming insoluble calcium silicates that saturate the pores and increase the compactness and surface hardness.

Characteristics of surfaces treated with products from the **Mapecrete** range:

- excellent increase in wear resistance;
- drastic reduction in liquid absorption (water repellency);
- dust proof;
- reduction of the pop-out phenomenon;
- durability;
- ease of cleaning and maintenance;
- pleasant aesthetic appearance, possibility of having a glossy finish.

The **Mapecrete** family mainly includes **lithium silicate** based products:

- **Mapecrete Lithium Cure**, to protect and assist in the curing of newly cast concrete;
- **Mapecrete LI Hardener**, for industrial and commercial floors;
- **Mapecrete Lithium+**, characterised by excellent water-repellent properties;
- **Mapecrete Lithium Protector**, also creates a protective surface film that can be burnished by means of a subsequent optional treatment with a high-speed burnishing machine.



Aesthetic and protection

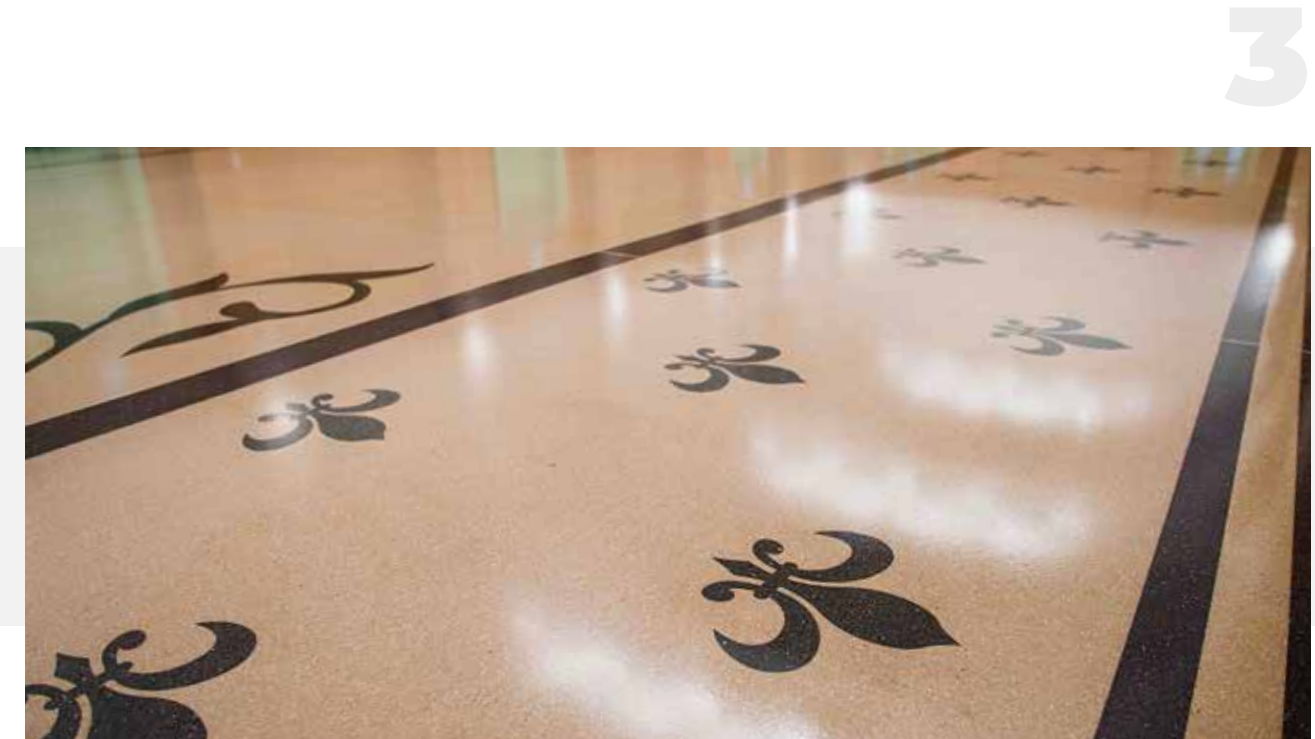
Enhancing the appearance of treated surfaces

Film-forming hardeners and protectors

The **Mapecrete** range includes liquid products that form a protective film on the surface of the concrete floor, protecting it from the penetration of liquids and avoiding the formation of dust.

- **Mapecrete U-Protector**, an emulsion of synthetic polymers, creates a protective film ideal for polished concrete floor or "Terrazzo alla Veneziana" surfaces in both concrete and **Ultratop** self-levelling cementitious mortar.
- **Mapecrete Lithium Protector**, based on lithium silicates and polymers, creates excellent surface densification providing excellent performances.

With both products, the protective film can be burnished using special equipment with high-speed rotation discs. The shine of the protective layer enhances the colours of the treated surface and gives it a pleasant and particular aesthetic appearance.



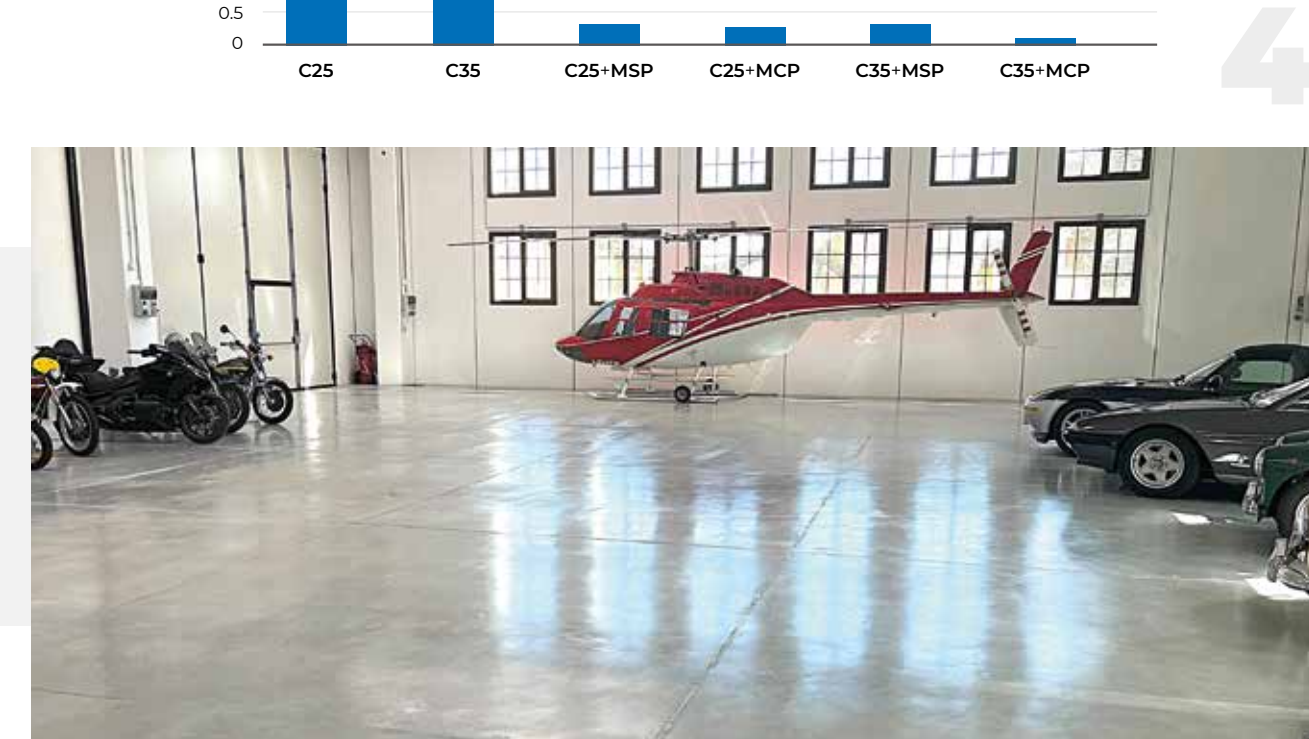
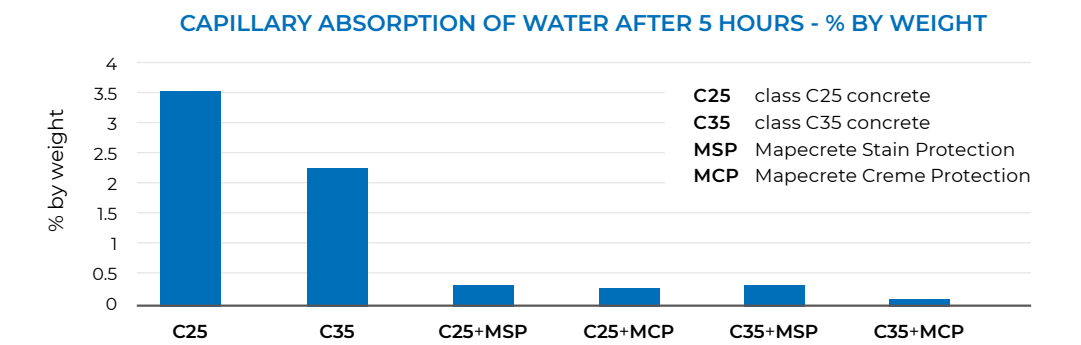
Against the liquid penetration

Invisible protection against the penetration of liquids

Water and/or oil repellent treatments

The range of **Mapecrete** products is completed with surface protectors based on special synthetic water-dispersed resins that characterise the treated floors with a marked water and/or oil repellent effect. These products are simple and easy to apply, for new or existing floors. They prevent the penetration of water or oils, which have come into contact with the surface due to accidental spills and brief contacts, maintaining their aesthetic appearance unchanged. These solutions are perfect for treating polished cementitious substrates or "Terrazzo alla Veneziana" floors. They can be used with the self-levelling cementitious products of the **Ultratop** range.

- **Mapecrete Creme Protection:** thixotropic watery emulsion of silane based impregnating product, for the water-repellent protection of floor surfaces;
- **Mapecrete Stain Protection:** watery emulsion of synthetic resin based impregnating product, for the water-oil repellent protection of the treated surfaces.



EVERYTHING'S OK,
WITH MAPEI



HEAD OFFICE
MAPEI SpA
Via Cafiero, 22
20158 Milan
Tel. +39-02-37673.1
mapei.com
mapei@mapei.it