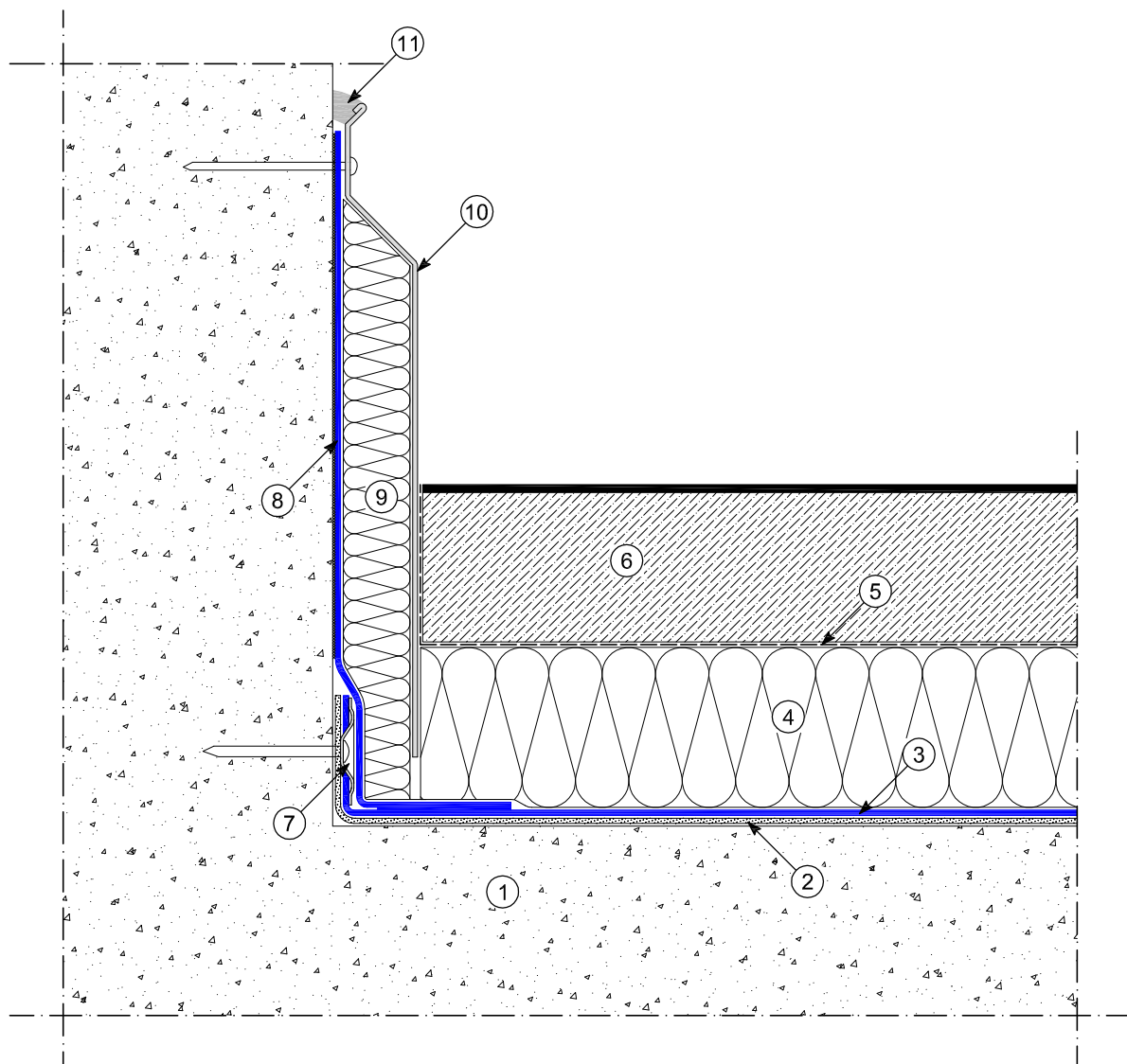


Drawing S-0218

Wall connection



- | | |
|---|---|
| ① Structure | ⑦ Perimeter mechanical fixing with plates |
| ② Levelling layer POLYDREN | ⑧ Roofing membrane fully adhered
MAPEPLAN / MAPEPLAN T |
| ③ Roofing membrane
MAPEPLAN B / MAPEPLAN T B | ⑨ Shock absorber |
| ④ Insulation panel *1 | ⑩ Metal profile |
| ⑤ Anti-soaking layer | ⑪ Sealing with MAPEPLAN SEALANT KIT |
| ⑥ Concrete screed with carriagable floor | |

*1 In some cases you must insert a separation layer between the roofing membrane and the insulation panel

29.03.2012

reproduction prohibited
without cite the source