

SELECTION CHART OF WATERPROOFING PRODUCTS



BATHROOMS, DAMP AREAS, SWIMMING POOLS, INDUSTRIAL KITCHENS, BALCONIES, TERRACES and FLAT ROOFS



Bathrooms



Swimming Pools



Kitchens

Toilets, swimming pools, spas, industrial kitchens, balconies and terraces: all environments to be protected from water.

In order to waterproof these environments efficiently it is important to:

- protect structures from deterioration;
- improve rooms' comfort;
- reduce maintenance costs to the minimum.

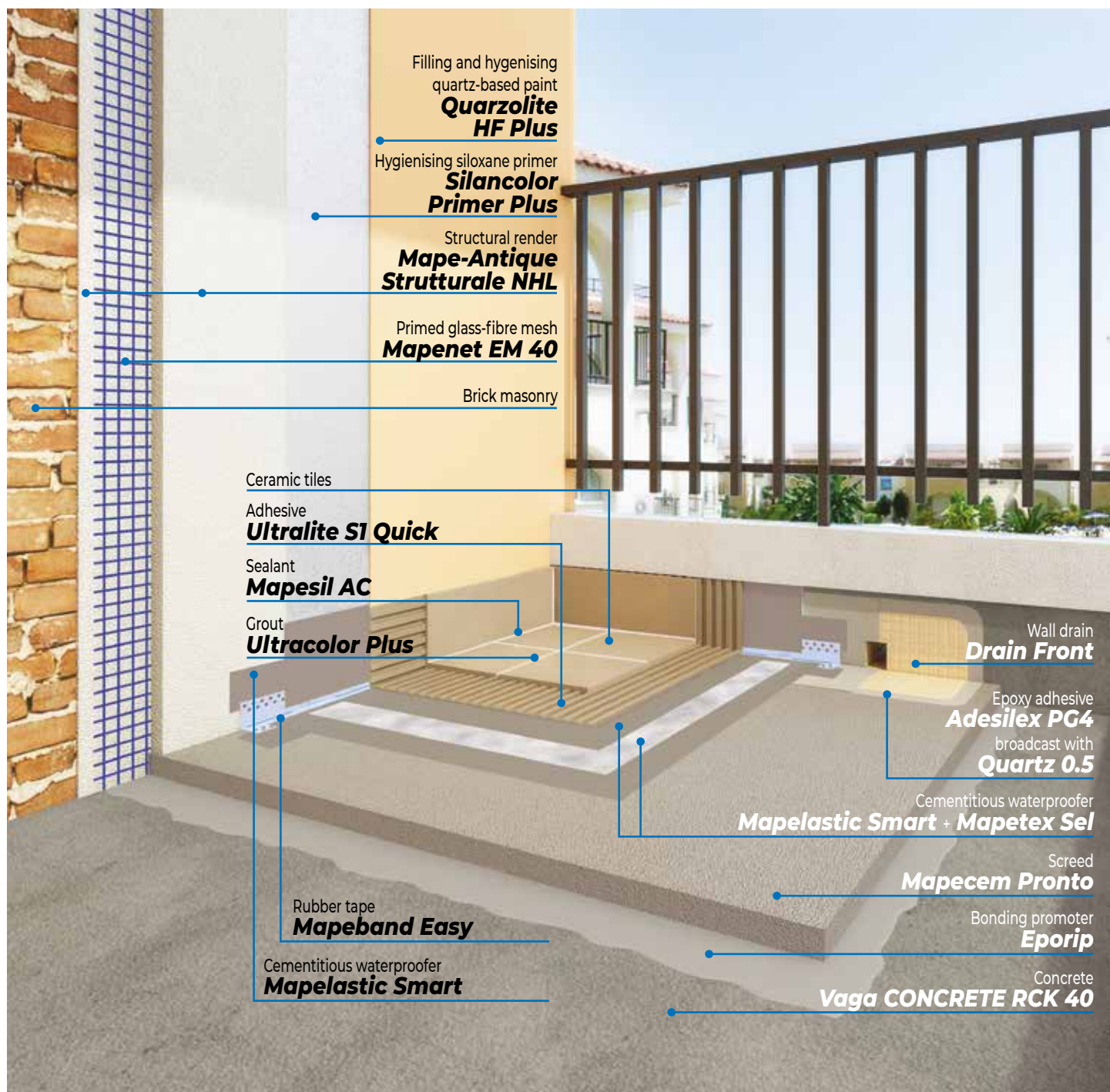
That's why MAPEI always offers its customers different systems for specific problems and always has the right product with suitable accessories to solve these problems.

WATERPROOFING STRUCTURES ABOVE GROUND LEVEL

It is very important that newly built structures which, during their normal service life, will come into contact with water, such as balconies, terraces and roofs, or which have areas or rooms that will be exposed to damp or moisture, such as swimming pools, bathrooms and industrial kitchens, are correctly waterproofed in order to increase their durability.

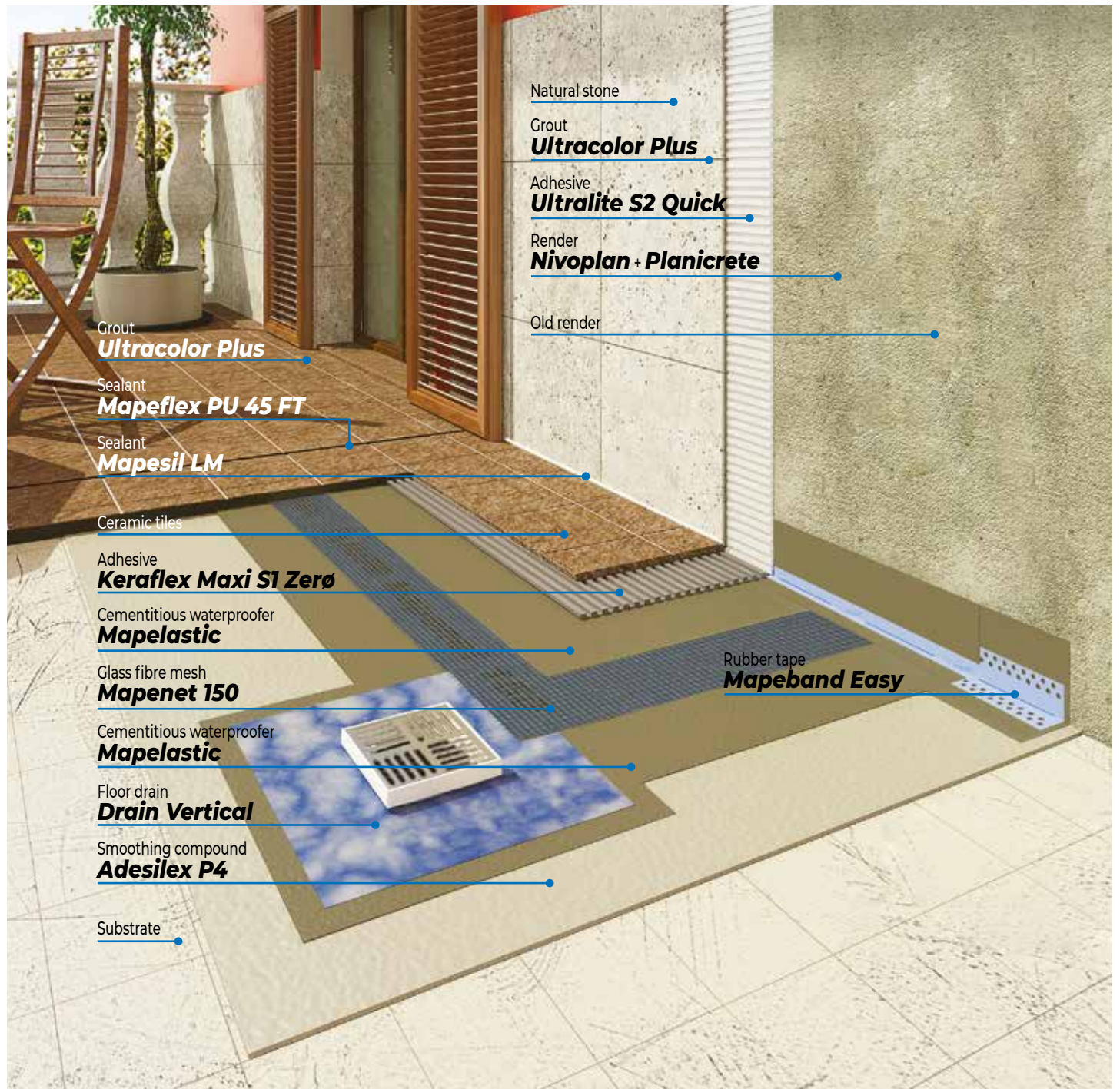
MAPEI has developed a system of products and accessory items for this type of application that may be used to carry out waterproofing work that is both secure and guaranteed, and which also takes into account the special care required around particular areas and features of structures.

... NEW STRUCTURES



WATERPROOFING STRUCTURES ABOVE GROUND LEVEL

... REPAIRS TO EXISTING STRUCTURES



Damage to the waterproofing system of existing roofs may be due to numerous factors. In order to guarantee the durability of a structure, it is very important the products used can ensure that the structure is waterproof and will provide adequate protection.

To ensure these conditions are met, MAPEI has developed a series of systems that may be used to repair the waterproofing system of existing structures by applying waterproofing products and their relative accessory items, either directly over the existing system or after breaking out limited areas of the structure, to guarantee the structure is made waterproof again.

... EXISTING EXPOSED ROOF WITH BITUMINOUS MEMBRANE USING A READY-TO-USE WATERPROOFER WITH HIGH SOLAR REFLECTANCE





Mapelastic



- ▶ Two-component flexible **cementitious mortar**.
- ▶ For **protection** and **waterproofing**.
- ▶ For structures particularly subject to cracking.
- ▶ Used in conjunction with **Mapenet 150**, **Mapelastic** may also be used on surfaces particularly stressed or crazed and helps to **improve** both **elongation at break** and **crack bridging**.



Mapelastic Turbo



- ▶ **Two-component**, quick-drying, elastic **cementitious mortar**.
- ▶ May also be applied at low temperatures and on substrates not perfectly dry, as long as they are well-cured.
- ▶ Application of two coats incorporating **Mapenet 150** or **Mapetex Sel**.



Mapegum WPS



- ▶ **Fast drying**, liquid elastic membrane for interior waterproofing.
- ▶ **Solvent-free**.
- ▶ **Ready-to-use**.
- ▶ Application: **smooth trowel**, **roller** or **spray** in two crossing coats (1 mm each).
- ▶ For **thin thicknesses** (ca. 1 mm max. per coat).



Mapeband TPE



- ▶ **TPE tape** for **flexible sealing and waterproofing** of structural joints subject to movements **up to 5 or 10 mm**.
- ▶ For expansion joints in road-works, water tunnels and covering applications.



Drain Vertical / Drain Lateral



- ▶ **Floor-drain kit**.



Mapeband SA



- ▶ **Self-adhesive butyl tape** with alkali-resistant, non-woven fabric for elastic waterproofing systems.
- ▶ Seals between different types of material and waterproofing narrow fillets in tight spaces.
- ▶ May be applied on various substrates after suitable preparation and application of a suitable primer.



Mapelastic Smart



- ▶ **Two-component**, high-flexibility **cementitious mortar**.
- ▶ For **protection** and **waterproofing**.
- ▶ Used in conjunction with **Mapenet 150** and **Mapetex Sel**, **Mapelastic Smart** may be also used on surfaces particularly stressed or crazed and helps to **improve** both **elongation at break** and **crack bridging**.



Mapelastic AquaDefense



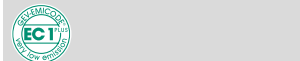
- ▶ **Ready-to-use**, **flexible**, liquid **waterproofing membrane**.
- ▶ **Solvent-free**.
- ▶ **Ultra-quick** drying.
- ▶ For **internal** and **external** waterproofing applications.
- ▶ Ceramic and stone material may be applied after only **4 hours**.



Monolastic



- ▶ **One-component**, flexible **cementitious mortar**.
- ▶ It **bonds** extremely well to **all surfaces** in **concrete**, **masonry**, **ceramic** and **marble**.



Mapeband



- ▶ **Alkali-resistant rubber tape** with felt for cementitious waterproofing systems and liquid membranes.
- ▶ For **walls** and **floors**.
- ▶ For **any type of substrate**.
- ▶ For baths, showers, terraces, balconies, etc., that are to be tiled with ceramic tiles, marble, natural stones.



Mapeband PE 120



- ▶ **PVC tape** for waterproofing systems formed using liquid membrane, not cementitious.
- ▶ **Flexible waterproofing** seal of edges, expansion joints, pipes and drains.



Mapeband Easy



- ▶ **Rubber tape** of non-woven fabric to form elastic joints in waterproofing systems.
- ▶ Highly elastic.
- ▶ Easy to apply thanks also to the holes along the edges.

SWIMMING POOLS



Mapelastico



- ▶ Two-component flexible **cementitious mortar**.
- ▶ For **protection** and **waterproofing**.
- ▶ For structures particularly subject to cracking.
- ▶ Used in conjunction with **Mapenet 150**, **Mapelastico** may also be used on surfaces particularly stressed or crazed and helps to **improve** both **elongation at break** and **crack bridging**.



Mapelastico Smart



- ▶ **Two-component**, high-flexibility **cementitious mortar**.
- ▶ For **protection** and **waterproofing**.
- ▶ Used in conjunction with **Mapenet 150** and **Mapetex Sel**, **Mapelastico Smart** may be also used on surfaces particularly stressed or crazed and helps to **improve** both **elongation at break** and **crack bridging**.

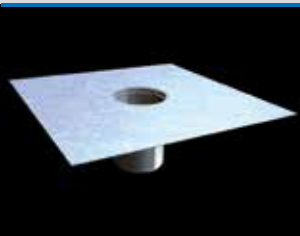


Mapeband



- ▶ **Alkali-resistant rubber tape with felt** for cementitious waterproofing systems and liquid membranes.
- ▶ For **walls** and **floors**.
- ▶ For **any type of substrate**.
- ▶ For baths, showers, terraces, balconies, etc., that are to be tiled with ceramic tiles, marble, natural stones.

Drain Vertical



- ▶ **Floor-drain kit**

Mapetex Sel



- ▶ **Non-woven, macro-holed polypropylene fabric**.
- ▶ **Totally permeable to water**, with synthetic polypropylene fibres.
- ▶ For **reinforcing** waterproofing membranes.



Mapelastico Foundation



- ▶ Two-component, flexible **cementitious mortar** for waterproofing.
- ▶ For **concrete surfaces subject to negative or positive hydrostatic pressure**.
- ▶ For **foundation walls, car-parks, environments below ground level, water channels** and **swimming pools**.
- ▶ To be applied by **roller** or **spray**.
- ▶ For **horizontal** and **vertical surfaces** at a **thickness of at least 2 mm**.

Mapeproof Swell



- ▶ **Hydro-expansive**, rubber-based hydrophilic **sealant paste** in cartridges, applied using an extrusion gun.
- ▶ For **waterproof, flexible seals** in cracks in reinforced cement and in prefabricated elements infiltrated by water.

Mapeband TPE



- ▶ **TPE tape** for **flexible sealing and waterproofing** of structural joints subject to movements **up to 5 or 10 mm**.
- ▶ For expansion joints in road-works, water tunnels and covering applications.

Mapenet 150



- ▶ **Alkali-resistant glass fibre mesh** (in compliance with ETAG 004 guide).
- ▶ For **reinforcing** waterproof protections, anti-fracture membranes and insulation coatings.



Mapeband Easy



- ▶ **Rubber tape** of non-woven fabric to form elastic joints in waterproofing systems.
- ▶ Highly elastic.
- ▶ Easy to apply thanks also to the holes along the edges.

KITCHEN



Mapegum EPX / Mapegum EPX-T



- ▶ Chemical resistant, **epoxy-polyurethane resin** for waterproofing and protecting screeds and concrete slabs prior to the laying of ceramic tiles.
- ▶ **Mapegum EPX-T**, thixotropic version for walls.
- ▶ No reinforcement required.



Mapelastic



- ▶ Two-component flexible **cementitious mortar**.
- ▶ For **protection and waterproofing**.
- ▶ For structures particularly subject to cracking.
- ▶ Used in conjunction with **Mapenet 150**, Mapelastic may also be used on surfaces particularly stressed or crazed and helps to **improve both elongation at break and crack bridging**.



Mapelastic Smart



- ▶ **Two-component, high-flexibility cementitious mortar**.
- ▶ For **protection and waterproofing**.
- ▶ Used in conjunction with **Mapenet 150** or **Mapetex Sel**, Mapelastic Smart may be also used on surfaces particularly stressed or crazed and helps to **improve both elongation at break and crack bridging**.



Mapelastic Turbo



- ▶ **Two-component, quick-drying, elastic cementitious mortar**.
- ▶ May also be applied at low temperatures and on substrates not perfectly dry, as long as they are well-cured.
- ▶ Application of two coats incorporating **Mapenet 150** or **Mapetex Sel**.



Mapelastic AquaDefense



- ▶ **Ready-to-use, flexible, liquid waterproofing membrane**.
- ▶ **Solvent-free**.
- ▶ **Ultra-quick drying**.
- ▶ For **internal and external** waterproofing applications.
- ▶ Ceramic and stone material may be applied after only **4 hours**.



Mapeband SA



- ▶ **Self-adhesive butyl tape** with alkali-resistant, non-woven fabric for elastic waterproofing systems.
- ▶ Seals between different types of material and waterproofing narrow fillets in tight spaces.
- ▶ May be applied on various substrates after suitable preparation and application of a suitable primer.



Monolastic



- ▶ **One-component, flexible cementitious mortar**.
- ▶ It **bonds extremely well to all surfaces in concrete, masonry, ceramic and marble**.



Aquaflex Roof



- ▶ **Ready-to-use, flexible, liquid membrane**, with fibres for continuous waterproofing layers on exposed external surfaces.
- ▶ **Ready-to-use**.
- ▶ **Set to light foot traffic**.
- ▶ **Stored for 24 months** in its original packaging.
- ▶ For **continuous waterproofing** of exposed surfaces.



Aquaflex Roof HR



- ▶ **Fibre-filled liquid membrane in water emulsion with high solar reflectance** and thermal emittance with a high SRI solar reflectance index (105).
- ▶ **Ready-to-use**.
- ▶ **Lowers the surface temperature** of the roof by **more than 50%** compared with dark coloured roofs.
- ▶ For **continuous exposed** waterproofing layers.
- ▶ **High reflectance white colour**.



Aquaflex Roof Plus



- ▶ **Ready-mixed, highly elastic, rapid drying, liquid waterproofing membrane** resistant to UV rays.
- ▶ **Rapid drying**.
- ▶ Durability classes 5, 10 and 15 years.
- ▶ **SRI (Solar Reflectance Index) = 107**.



Aquaflex Roof Premium



- ▶ **UV-resistant, water-based polyurethane** waterproofing membrane
- ▶ **Supplied ready for use**.
- ▶ **Resistant to foot traffic and standing water**.
- ▶ Contains no VOC.
- ▶ Application: by roller or spray on cementitious substrates in general and substrates with old bitumen membranes or floor and wall coverings.



Mapetex Sel

- ▶ **Non-woven, macro-holed polypropylene fabric**.
- ▶ **Waterproofing, with synthetic polypropylene fibres**.
- ▶ For **reinforcing** waterproofing membranes.



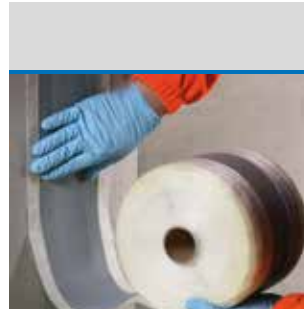
Mapetex 50

- ▶ **Non-woven polypropylene fabric**.
- ▶ Black coloured non-woven fabric of 50 g/m² made from **single heat-welded polypropylene threads**.
- ▶ For **reinforcing** waterproofing membrane as **Aquaflex Roof, Aquaflex Roof HR and Aquaflex Roof Plus**.



Mapenet 150

- ▶ **Alkali-resistant glass fibre mesh** (in compliance with ETAG 004 guide).
- ▶ For **reinforcing** waterproof protections, anti-fracture membranes and insulation coatings.



Mapeband TPE

- ▶ **TPE tape for flexible sealing and waterproofing** of structural joints subject to movements **up to 5 or 10 mm**.
- ▶ For expansion joints in road-works, water tunnels and covering applications.



Mapeband

- ▶ **Alkali-resistant rubber tape with felt** for cementitious waterproofing systems and liquid membranes.
- ▶ For **walls and floors**.
- ▶ For **any type of substrate**.
- ▶ For baths, showers, terraces, balconies, etc., that are to be tiled with ceramic tiles, marble, natural stones.



Drain Vertical / Drain Lateral

- ▶ **Floor-drain kit.**



Drain Front

- ▶ **TPE angular outlet** for terraces and balconies.
- ▶ Available in **ivory and copper colour**.



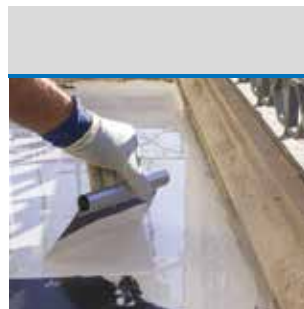
Mapeslope

- ▶ **One-component cementitious levelling mortar** for building up slopes on roofs over new and old waterproof membranes.
- ▶ Application: smooth spreader over bitumen sheaths, existing floor coverings and cementitious substrates in general.
- ▶ To build up areas **up to 5 cm thick** in a single layer.



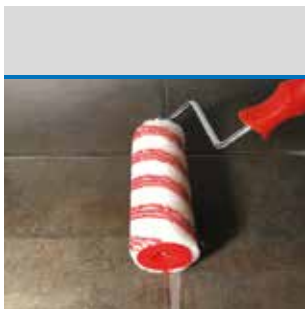
Mapeband Easy

- ▶ **Rubber tape** of non-woven fabric to form elastic joints in waterproofing systems.
- ▶ Highly elastic.
- ▶ Easy to apply thanks also to the holes along the edges.



Purtop Easy

- ▶ **One-component elastic polyurethane** waterproofing membrane.
- ▶ For **new and existing** structures; may be applied on a wide range of substrates.
- ▶ Applied in two coats, but by adding **Purtop ADY** it may be applied in **one single coat**.
- ▶ **Coloured finish** remains stable over the years thanks to **Mapecoat PU 20 N**.



Purtop Easy T

- ▶ **One-component transparent aliphatic polyurethane** waterproofing membrane for terraces and balconies.
- ▶ For **renovation work**.
- ▶ **Ready-to-use**; applied in two coats.

UNDERGROUND STRUCTURES



New constructions



Repairs

Underground structures: the elements of a building which are most often in contact with water and aggressive elements in the ground.

All structures below ground level come into contact with the humidity in the ground or with the water table and must be protected to guarantee the life-span of buildings. If no suitable protection is applied, there are no construction materials with the capacity of resisting the various factors which are present below ground level. MAPEI offers a wide portfolio of repair and protection solutions which guarantee an efficient solution for any construction element.

RENOVATING STRUCTURES BELOW GROUND LEVEL WITH WATER UNDER PRESSURE

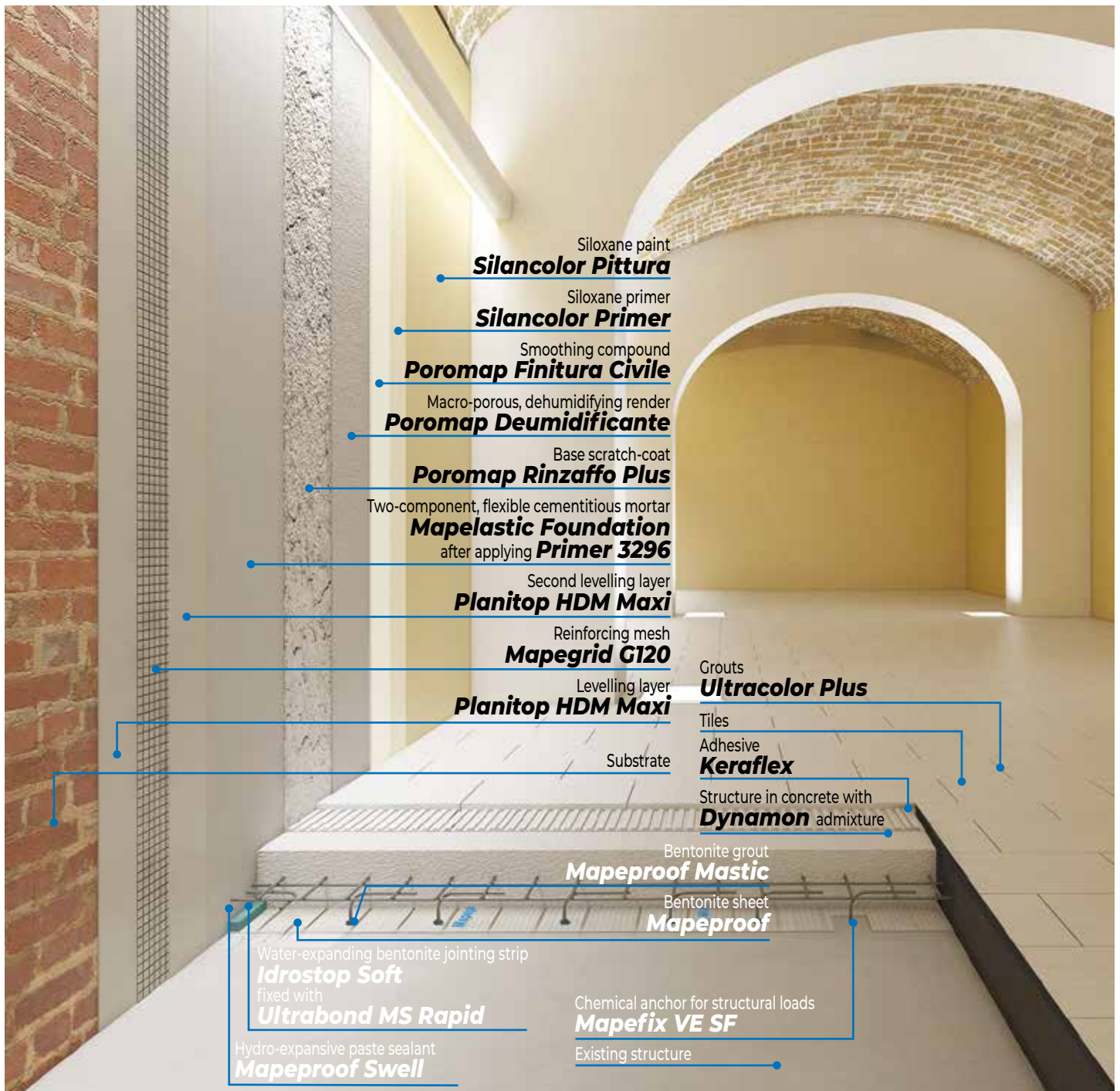
How many times have we been in an unpleasant room below ground level, such as a basement or cellar where damp and humidity have caused stains to form on the walls and there is an unpleasant smell?

For all existing structures with problems caused by infiltrations into rooms below ground level, whether they have only been recently built or are existing, MAPEI has

developed various restoration systems that guarantee wellbeing and comfort in such environments.

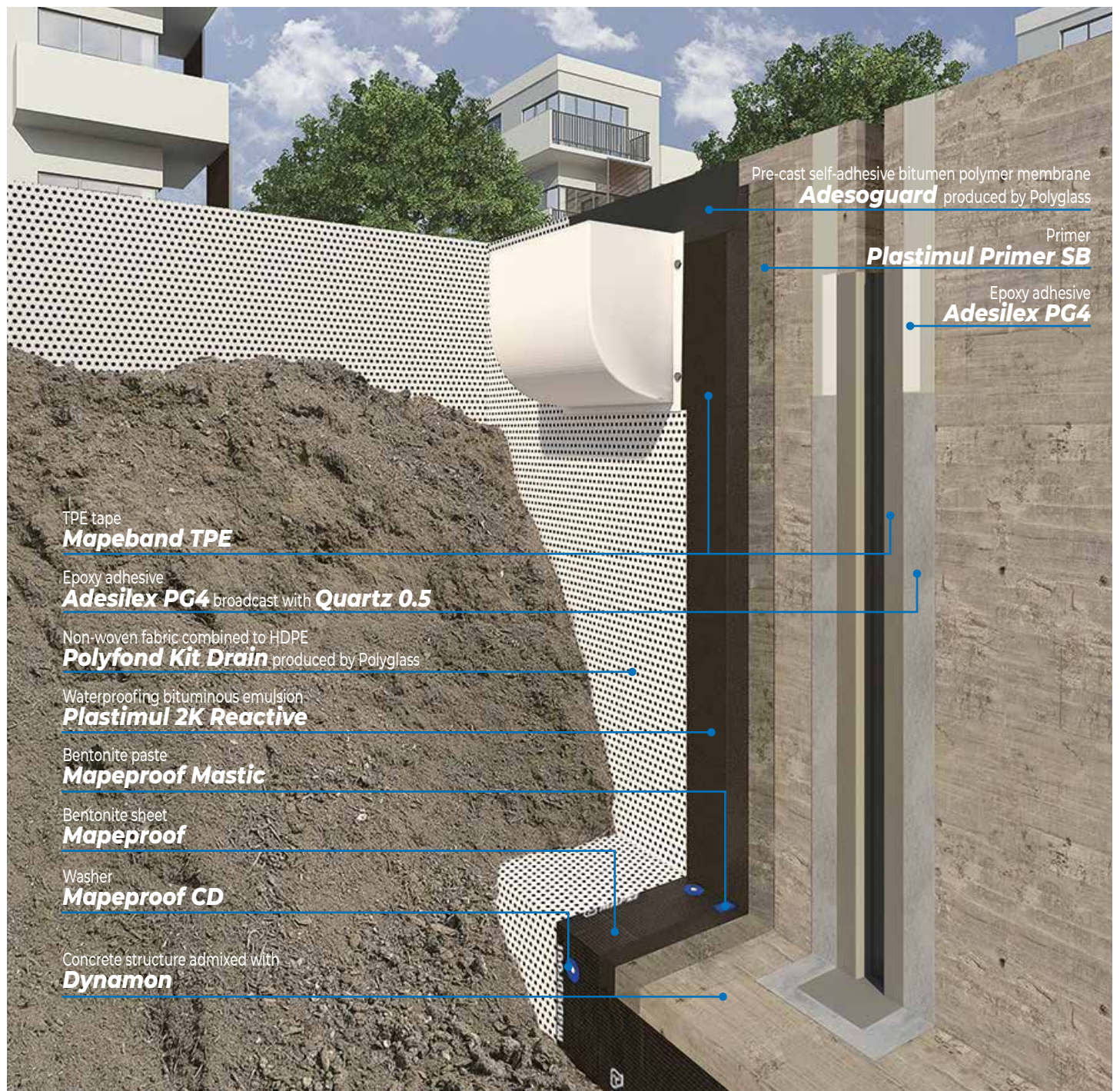
These methods have various degrees of invasiveness and include special attention to the minor details right up to complete linings for existing structures, so that they are isolated from any surrounding water and areas below ground level are given a new lease of life.

... EXISTING MASONRY STRUCTURES WITH WATER IN COUNTER PRESSURE AND ANTI CONDENSATION CYCLE



WATERPROOFING BELOW-GRADE FOUNDATIONS OF NEW CONSTRUCTIONS

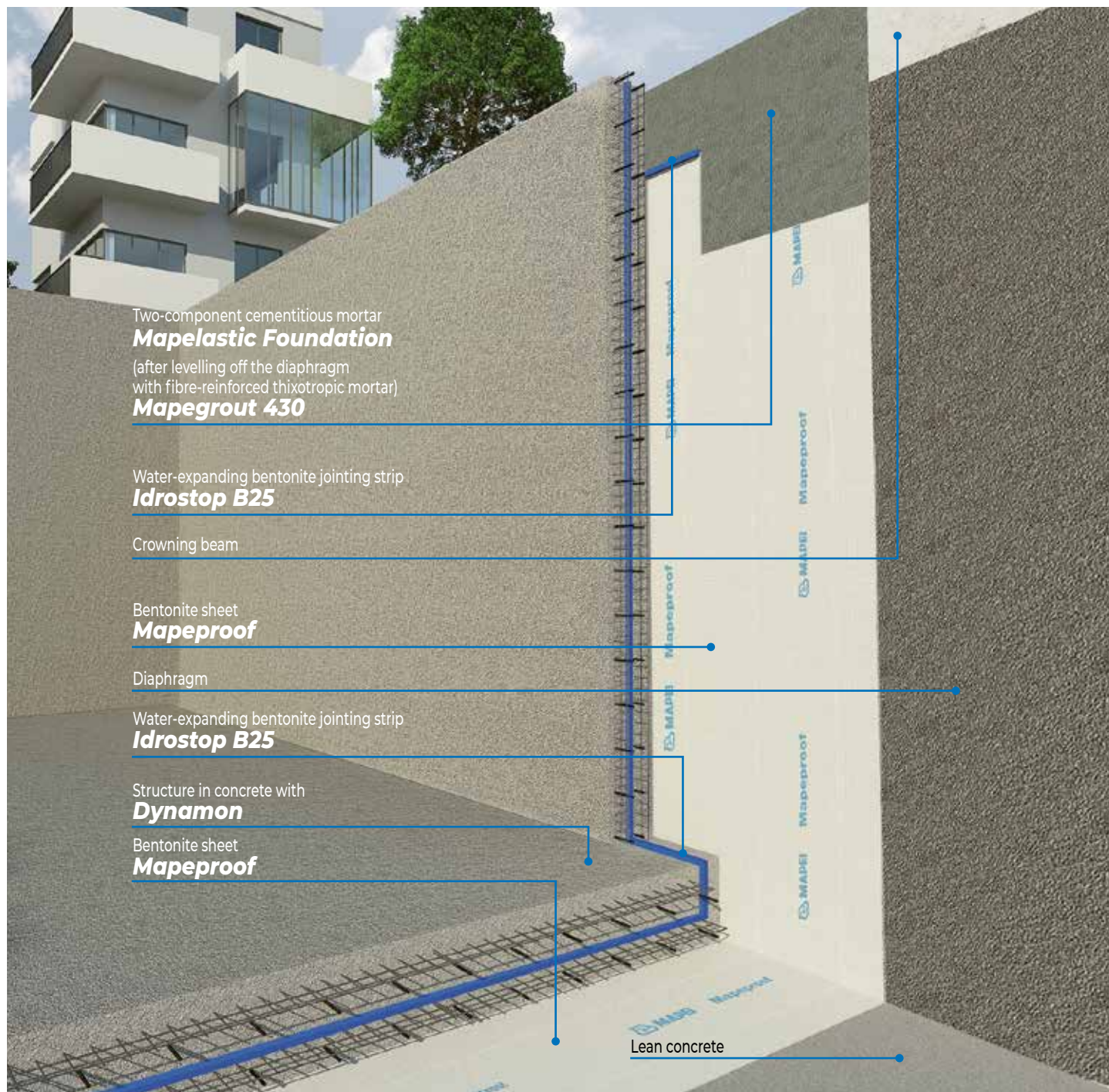
... REINFORCED CONCRETE FOUNDATIONS IN OPEN EXCAVATIONS



When a new building site is opened, one of the first problems is to install and waterproof the foundations so that, once completed, any rooms in the building below ground level will remain dry and usable by the occupants. The subject of waterproofing is particularly significant in order to isolate the structures from any surrounding water, and a continuous, waterproof “tanking” must be created around the structure under construction.

MAPEI offers a complete range of solutions for waterproofing new structures constructed below ground level, from bentonite sheets to cementitious products and bitumen emulsions. The range also includes all the ancillary materials required (such as jointing materials for construction joints and structural joints), to form a perfectly watertight system, even around construction details, protrusions and penetrations.

... REINFORCED CONCRETE FOUNDATIONS IN EXCAVATIONS WITH TEMPORARY SHORING





Mapeproof



- ▶ **Bentonite waterproofing sheets** for underground structures.
- ▶ Suitable for both **horizontal** and **vertical surfaces**.
- ▶ For both **pre-cast** and **post-cast**.



Mapeproof LW



- ▶ **Bentonite waterproofing sheets** for underground structures.
- ▶ For use on **horizontal** and **vertical structures** below ground level with a **maximum water table of 5 metres**.
- ▶ For both **pre-cast** and **post-cast**.

Mapeproof CD



- ▶ **Polyethylene washers**.
- ▶ For **fastening Mapeproof** and **Mapeproof LW** bentonite sheets in place on horizontal and vertical surfaces.
- ▶ To be used with both hammer and nails or with a nail gun.



Mapeproof Mastic



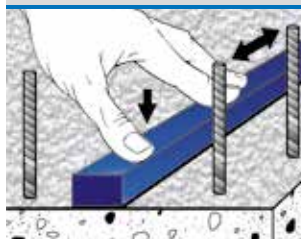
- ▶ **Bentonite paste** made from natural sodium bentonite and plasticising admixtures for sealing penetrations which pass through surfaces.
- ▶ **Extremely easy-to-use**.
- ▶ It is used for **sealing elements which pass through surfaces** (for sealing formwork and small honeycomb voids, to blend in edges and corners and for localised repairs to bentonite sheets).
- ▶ **Repairs** localised damages in bentonite sheets.

Mapeproof Swell



- ▶ **Hydro-expansive**, rubber-based hydrophilic sealant paste in cartridges, applied using an extrusion gun.
- ▶ For **waterproof, flexible seals** in cracks in reinforced cement and in prefabricated elements infiltrated by water.

Idrostop



- ▶ **Hydrophilic expandable rubber section** for watertight construction joints.
- ▶ Specially designed **to form** watertight construction joints **up to a hydraulic pressure of 5 atm**.
- ▶ **Bentonite-free**.
- ▶ Creates an **active barrier** against pressurized water (positive and negative).
- ▶ For **concrete, metal, PVC** and **natural stone**.
- ▶ Bond **Idrostop** to the substrate with **Idrostop Mastic**.

Idrostop B25



- ▶ **Waterstop profile** made from natural sodium bentonite and polymers.
- ▶ **Compact, flexible** and **stable**.
- ▶ **Seals** the formation of small localised gravel clusters in concrete.
- ▶ It forms a perfect **seal** in construction joints.
- ▶ **May be applied with nails**, no anchoring mesh required.

Idrostop Soft



- ▶ **Water-expanding, highly-flexible, bentonite jointing strip** for waterproofing construction joints and second pours.
- ▶ **Excellent elasticity**.
- ▶ **High swelling capacity**, capable of filling small honeycomb voids and shrinkage in the concrete.
- ▶ **Idrostop Soft** must be bonded to the substrate with **Mapeflex MS 45** or **Ultrabond MS Rapid**.

Idrostop PVC BI-BE



- ▶ **PVC waterstop** for sealing structural joints.
- ▶ For **waterproofing structural joints** in civil, industrial and hydraulic constructions.

Mapeband TPE



- ▶ **TPE tape** for **flexible sealing and waterproofing** of structural joints subject to movements **up to 5 or 10 mm**.
- ▶ For expansion joints in road-works, water tunnels and covering applications.

Idrosilex



- ▶ **Waterproofer** for cementitious mortars.
- ▶ For **waterproofing** basements, swimming pools, reservoirs, tunnels, etc.
- ▶ Available in **powder** and **liquid** form.



Planiseal 88 (former Idrosilex Pronto)



- ▶ **Osmotic cementitious mortar** suitable for contact with drinking water.
- ▶ For **waterproofing** foundations, walls, cellars, basements, lift-rooms, swimming pools, canals and reservoirs. Also safe for use on containers holding drinking water.
- ▶ To be applied by **brush, trowel** or **spray**.



Mapelastick Foundation



- ▶ Two-component, flexible **cementitious mortar** for waterproofing.
- ▶ For **concrete surfaces subject to negative or positive hydrostatic pressure**.
- ▶ For **foundation walls, car-parks, environments below ground level, water channels and swimming pools**.
- ▶ To be applied by **roller or spray**.
- ▶ For **horizontal and vertical surfaces at a thickness of at least 2 mm**.



Plastimul



- ▶ Solvent-free, **bitumen waterproofing emulsion** for general purpose use.
- ▶ For **horizontal and vertical surfaces**.
- ▶ For **foundations, retaining walls, layers beneath tiles, etc.**



Plastimul 2K Plus



- ▶ **Two-component, fibre-reinforced, high-flexibility bitumen waterproofing emulsion**.
- ▶ **Quick-drying**.
- ▶ **Solvent-free, odourless, ecological**.
- ▶ **Resistant to aggressive substances contained in the ground**.
- ▶ For **waterproofing horizontal and vertical concrete and brickwork surfaces at low temperatures or high levels of damp and on smooth surfaces**.
- ▶ To be applied by **flat or notched trowel** or by **spray** using a peristaltic pump.
- ▶ It may also be used for **spot-bonding insulating panels** used to protect the perimeter of the waterproofing layer.



Plastimul 2K Super



- ▶ **Two-component high-flexibility bitumen waterproofing emulsion** containing polystyrene spheres.
- ▶ **Low shrinkage and high yield**.
- ▶ **Solvent-free, odourless, ecological, easy to work**.
- ▶ **Resistant to aggressive substances contained in the ground**.
- ▶ For **waterproofing horizontal and vertical surfaces at low temperatures or high levels of damp and on smooth surfaces**.
- ▶ To be applied by **flat or notched trowel** or by **spray** using a peristaltic pump.



Mapei Waterproofer

- ▶ **Waterproofing agent** for render and normal-setting waterproofing mixes.
- ▶ Waterproofing structures in general installed below ground level.
- ▶ **Resistant to negative hydrostatic pressure**.
- ▶ Easy to use.
- ▶ **Remains stable over the years**.



Mapethene LT



- ▶ Self-adhesive bituminous membrane for waterproofing structures below ground level.
- ▶ Suitable for application at temperatures down to -5°C.
- ▶ Before applying the product apply a coat of **Mapethene Primer** or **Mapethene Primer W**.



Lamposilex



- ▶ Ultra-fast setting and drying **hydraulic binder** for plugging water leaks.
- ▶ Use **Lamposilex to plug any source of water**, even under pressure, in basements, tunnels, subways, etc.
- ▶ For **sealing watertight rigid joints** in hydraulic concrete structures, sewers, tanks and canals.



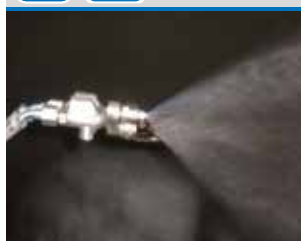
Plastimul 1K Super Plus



- ▶ **One-component, high flexibility bitumen waterproofing emulsion** containing polystyrene spheres and rubber granules.
- ▶ **Low shrinkage, quick-drying and high-yield and ready-to-use**.
- ▶ **Solvent-free, odourless, ecological, easy to work**, resistant to aggressive substances contained in the ground.
- ▶ For **waterproofing horizontal and vertical concrete and brickwork surfaces** subject to high dynamic loads.
- ▶ To be applied by **flat or notched trowel** or by **spray** using a peristaltic pump.



Plastimul 2K Reactive



- ▶ **Two-component, high elasticity bitumen emulsion** for immediate waterproofing.
- ▶ Applied by **spray**.
- ▶ Solvent-free and eco-compatible.
- ▶ For **waterproofing foundations and retaining walls** from the outside and for waterproofing unexposed **horizontal and vertical surfaces** in general.



Planiseal 288



- ▶ **Two component cementitious mortar** for waterproofing internal structures, basins and tanks.
- ▶ Waterproofing of internal structures even with water in counterpressure.
- ▶ To be applied by **brush, roller or trowel**.



Mapethene HT



- ▶ Self-adhesive bituminous membrane for waterproofing structures below ground level.
- ▶ Suitable for application at temperatures up to +45°C.
- ▶ Before applying the product apply a coat of **Mapethene Primer** or **Mapethene Primer W**.



Mapeproof FBT



- ▶ **Synthetic fully-bonded waterproof sheet** membrane, laminated with non-woven fabric for waterproofing underground structures before pouring concrete.
- ▶ For **vertical and horizontal surfaces**.
- ▶ **Cold-applied system**; no heat and/or naked flames.

BATHROOMS, DAMP ENVIRONMENTS, SWIMMING POOLS, BALCONIES and TERRACES SELECTION CHART

	Horizontal and vertical surfaces	Fillets	Joints	Cross- members	Drains
BATHROOMS & DAMP ENVIRONMENTS					
Mapelastic	•				
Mapelastic Smart	•				
Mapelastic Turbo	•				
Mapelastic AquaDefense	•				
Mapegum WPS	•				
Monolastic	•				
Mapeband		•	•	•	
Mapeband Easy		•	•	•	
Mapeband SA		•		•	
Mapeband PE 120		•	•	•	
Drain Lateral					•
Drain Vertical					•
KITCHEN					
Mapegum EPX	•				
Mapegum EPX-T	•				
SWIMMING POOLS					
Mapelastic	•				
Mapelastic Foundation	•				
Mapelastic Smart	•				
Mapeproof Swell				•	
Mapeband		•	•		
Mapeband Easy		•	•		
Mapeband TPE			•		
Drain Vertical					•
BALCONIES, TERRACES and FLAT ROOFS					
Aquaflex Roof*	•				
Aquaflex Roof HR*	•				
Aquaflex Roof Plus*	•				
Aquaflex Roof Premium	•				
Mapelastic	•				
Mapelastic Smart	•				
Mapelastic Turbo	•				
Mapelastic AquaDefense	•				
Monolastic	•				
Mapenet 150	•				
Mapetex Sel	•				
Mapetex 50	•				
Mapeband		•	•		
Mapeband Easy		•	•		
Mapeband SA		•			
Mapeband TPE			•		
Drain Lateral					•
Drain Vertical					•
Drain Front					•
Mapeslope	•				
Purtop Easy*	•				
Purtop Easy T*	•				

* Waterproofing layers on exposed external surfaces

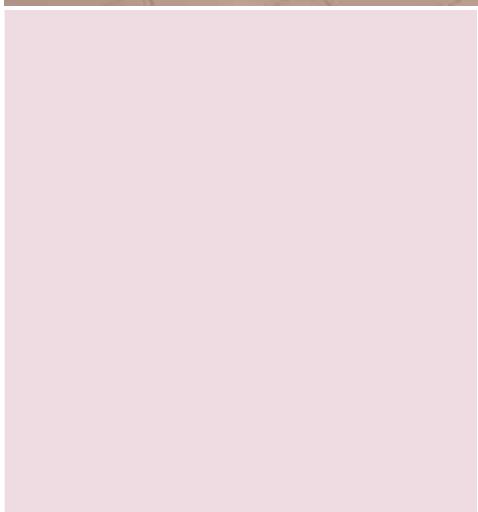
UNDERGROUND STRUCTURES SELECTION CHART

	Plateau	Post-cast walls	Pre-cast walls	Reinforced concrete walls with negative pressure	Brick walls with negative pressure	Lift shaft	Pile heads	Structural joint	Construction joint	Through bodies
UNDERGROUND STRUCTURES										
Mapeproof	•	•	•			•	•			
Mapeproof LW	•	•	•			•	•			
Mapeproof Mastic							•			•
Mapeproof Swell				•		•	•			•
Mapeproof FBT	•		•			•				
Idrostop						•			•	•
Idrostop B25						•	•		•	•
Idrostop Soft						•	•		•	•
Mapeband		•							•	
Mapeband TPE								•		
Idrostop PVC BI-BE								•		
Idrosilex						•				
Planiseal 88 (former Idrosilex Pronto)		•		•	•	•				
Mapelastic Foundation		•		•	•	•				
Lamposilex				•		•			•	•
Plastimul		•								
Plastimul 1K Super Plus		•								
Plastimul 2K Plus		•								
Plastimul 2K Super		•								
Plastimul 2K Reactive		•								
Planiseal 288		•		•	•	•				
Mapei Waterproofer				•	•	•				
Mapethene HT		•								
Mapethene LT		•								

• After preparing the substrate by carrying out the render with **Planitop HDM Maxi**.

MAPEI products are also:

- based on the innovative R&D labs of MAPEI Group;
- formulated with recycled, ultra-light material;
- developed to reduce energy consumption;
- manufactured locally in eco-sustainable plants.



Fast Track Ready, MAPEI technology identifying products for rapid installation of floor and wall coverings, reducing costs and disturbance.

EVERYTHING'S OK, WITH MAPEI

HEAD OFFICE
MAPEI S.p.A.
Via Cafiero, 22
20158 Milan
+39-02-37673.1
mapei.com
mapei@mapei.it

