

PRIMER G

Synthetic resin-based water-dispersion primer with very low volatile organic compound (VOC)



WHERE TO USE

- For treating gypsum surfaces prior to installing ceramic tiles.
- As an anchoring coat for gypsum-based sprayable plasters.
- To improve the adhesion of smoothing compounds on cementitious or anhydrite and gypsum-based surfaces.
- To provide uniform absorption in cementitious or gypsum surfaces.

Some application examples

- Preparing cement-based surfaces prior to smoothing with self-levelling or thixotropic smoothing compounds.
- Between layers of smoothing compounds once the first coat is perfectly dry.
- On gypsum plasters prior to smoothing with cementitious products.
- On anhydrite surfaces prior to applying cement-based products.
- On cementitious renders prior to smoothing with gypsum-based products.
- On gypsum walls as a fixative for wallpaper adhesives.
- Before installing ceramic tiles with cementitious adhesives on:
 - gypsum plasters and sprayed gypsum;
 - pre-cast gypsum panels;
 - fibrous-gypsum panels;
 - anhydrite screeds.
- Treating gypsum walls, chipboard, cement fibre boards, foamed concrete, renders etc. prior to papering or painting.

TECHNICAL CHARACTERISTICS

Primer G is a synthetic resin-based primer which, once applied to any surface, dries to form a flexible, compact, shiny coating which consolidates the surface, where needed. **Primer G** also improves the adhesion of smoothing compounds, paint, adhesive for wall paper, adhesive for tiles and mortar for renders.

The film of **Primer G** on the surface of gypsum or cement, prevents any chemical reaction between sulphates and the cement alluminates of gypsum which, in the presence of moisture, leads to the formation of the salt "ettringite" which is the cause of the separation of the two elements.

The use of **Primer G** when papering allows to reduce the substrate's absorption and, as a result, the amount of glue used, thus making the wallpaper removal much easier.

When used before applying sprayable plasters, **Primer G** prevents over-rapid absorption of water by the substrate, prolongs workability time and helps prevent shrinkage cracks.

When used before the application of self-levelling compounds, **Primer G** reduces the formation of air bubbles and helps prevent over-rapid drying making self-levelling easier.

Primer G is not flammable and can therefore also be used in closed, unventilated environments without any precautions having to be taken.

RECOMMENDATIONS

- **Primer G** does not waterproof gypsum substrates even though it considerably reduces their porosity and absorption.
- Do not apply onto magnesium substrates.
- **Primer G** is not recommended for external applications or where rising damp is present.

· Do not apply **Primer G** in such a quantity that it forms a surface film; dilute with water as appropriate for the absorption of the substrate.

APPLICATION PROCEDURE

Preparing the substrate

The substrate must be clean, dry and free from oils, grease, residual paint and other loose material.

In each case, the manufacturer's recommendations for gypsum-plaster must be followed, particularly as far as moisture content and level of surface finishing are concerned. Cracks in concrete surfaces must be repaired with **Eporip** or **Epojet**. Anhydrite surfaces must be sandpapered.

Application

a) As a treatment for ceramic tiles installed on gypsum. Stir **Primer G** just before use, spread it uniformly on the surface with a flat brush or roller without diluting it. If the gypsum plaster surface is particularly smooth and glossy, it is recommended to abrade it beforehand. Once it has dried, install the tiles.

b) As an anchoring coat for gypsum plasters. Dilute **Primer G** 1:2 with water and stir well; spread uniformly the mix on the surface with a flat brush or roller or spray pump. Apply the sprayable gypsum plaster as soon as **Primer G** is dry.

c) As a primer before applying self-levelling compounds and thixotropic smoothing compounds from the MAPEI range on:

· cementitious substrates: dilute **Primer G** 1:1 with water;

· gypsum-based substrate: use **Primer G** neat.

d) As a primer for wallpaper adhesives. Dilute **Primer G** 1:3 with water.

e) As a primer between smoothing layers. Dilute **Primer G** 1:1 with water.

Cleaning

Tools and containers should be washed at once with clean water. Any remaining residues once dry have to be removed mechanically or with **Pulicol 2000**.

CONSUMPTION

The consumption of **Primer G** depends on the porosity and absorption of the surface. Normal consumption is between 0.08 and 0.15 kg/m².

PACKAGING

Primer G is available in 25, 10 and 5 kg plastic drums and in 1 kg bottles.

STORAGE

Primer G, in its original unopened packaging, can be stored for 12 months. Protect from frost.

SAFETY INSTRUCTIONS FOR PREPARATION AND APPLICATION

Instructions for the safe use of our products can be found on the latest version of the Safety Data Sheet, available from our website www.mapei.com.

PRODUCT FOR PROFESSIONAL USE.

TECHNICAL DATA (typical values)	
PRODUCT IDENTITY	
Consistency:	liquid
Colour:	light blue
Density (g/cm ³):	1.01
pH:	8
Dry solids content (%):	18

GEV EMICODE (according to EN ISO 16000 - 3, 6, 9, 11 and CEN/TS 16516):	EC1 Plus - very low emission
Maximum VOC according to 2004/42/EC:	0 g/l
APPLICATION DATA (at +23°C - 50% R.H.)	
Application temperature range:	from +5°C to +35°C
Drying time before the application of the levelling compounds or adhesive: - concrete: - gypsum:	30 min 30-60 min



Use as a primer for gypsum plasters



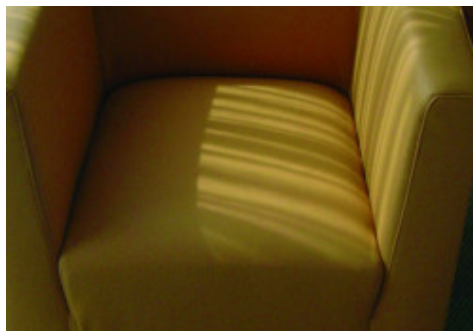
Checking gypsum plaster humidity



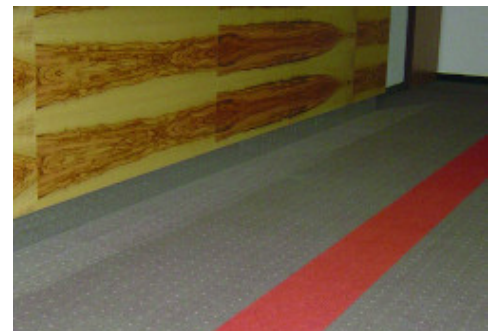
Applying Primer G with a roller



Example of Primer G applied before laying PVC and linoleum in a public gymnasium - Gdansk Orunia Indoor Gymnasium - Poland



Example of Primer G applied before spreading on Ultraplan Eco and Rollcoll adhesive, used to bond carpet in a hotel room - Villa Hotel Castellani - Austria



Example of Primer G applied before spreading on Ultraplan Eco and Rollcoll adhesive, used to bond carpet in a hotel room - Villa Hotel Castellani - Austria

WARNING

Although the technical details and recommendations contained in this product data sheet correspond to the best of our knowledge and experience, all the above information must, in every case, be taken as merely indicative and subject to confirmation after long-term practical application; for this reason, anyone who intends to use the product must ensure beforehand that it is suitable for the envisaged application. In every case, the user alone is fully responsible for any consequences deriving from the use of the product.

Please refer to the current version of the Technical Data Sheet, available from our website www.mapei.com

LEGAL NOTICE

The contents of this Technical Data Sheet ("TDS") may be copied into another project-related document, but the resulting document shall not supplement or replace requirements per the TDS in force at the time of the MAPEI product installation.

The most up-to-date TDS can be downloaded from our website www.mapei.com.

ANY ALTERATION TO THE WORDING OR REQUIREMENTS CONTAINED OR DERIVED FROM THIS TDS EXCLUDES THE RESPONSIBILITY OF MAPEI.

532-6-2020-gb

Any reproduction of texts, photos and illustrations published here is prohibited and subject to prosecution

