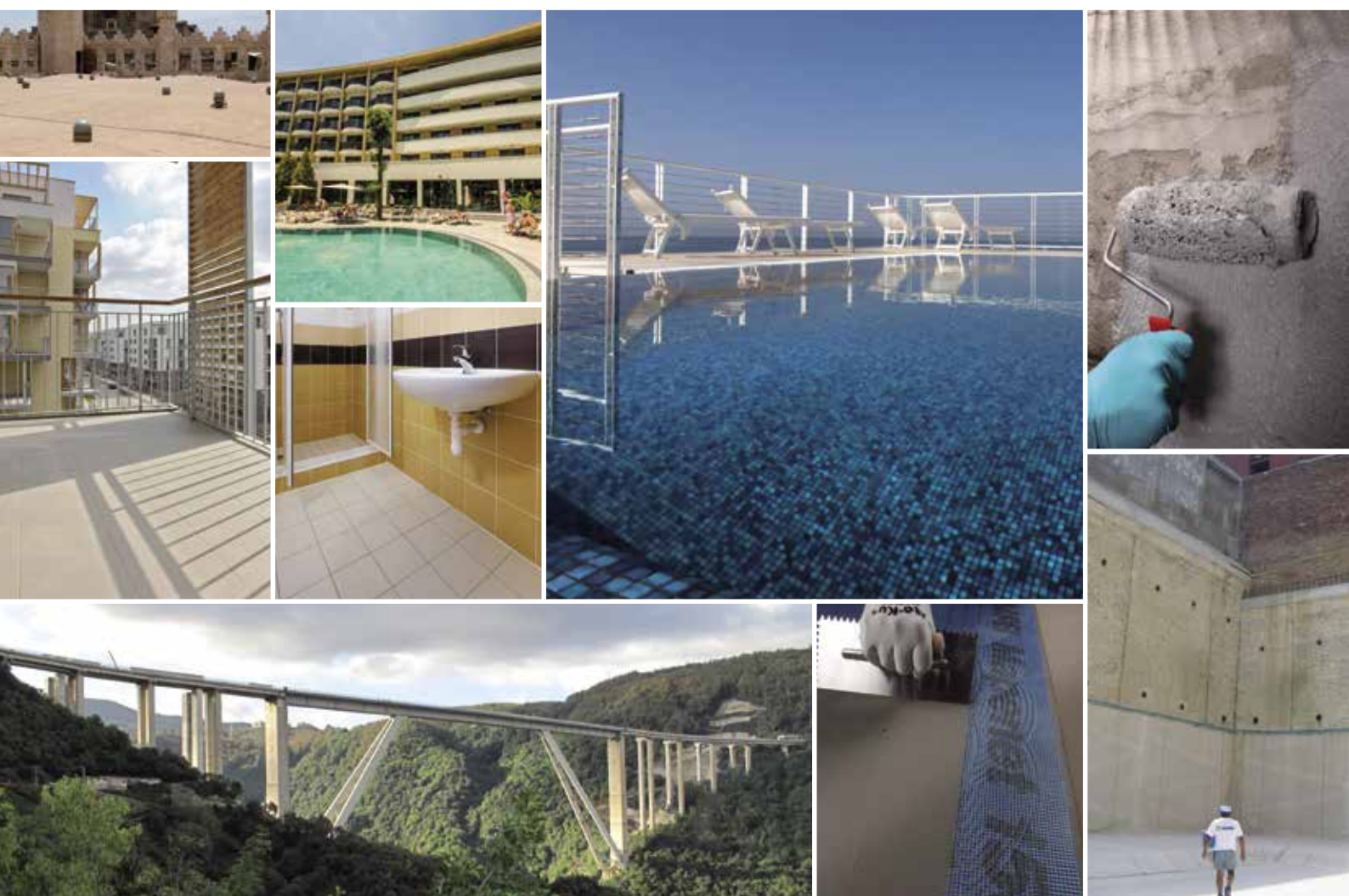


SELECTION CHART OF WATERPROOFING PRODUCTS



BATHROOMS, DAMP AREAS, SWIMMING POOLS, INDUSTRIAL KITCHENS, BALCONIES, TERRACES and FLAT ROOFS



Toilets, swimming pools, spas, industrial kitchens, balconies and terraces: all environments to be protected from water.

In order to waterproof these environments efficiently it is important to:

- protect structures from deterioration;
- improve rooms' comfort;
- reduce maintenance costs to the minimum.

That's why MAPEI always offer their customers different systems for specific problems and always has the right product with suitable accessories to solve these problems.



Bathrooms



Swimming Pools



Kitchen

Aquaflex WPU



- ▶ **Ready-to-use quick drying** and **flexible** Class III water-based hybrid **polyurethane** membrane for internal and external **waterproofing** applications
- ▶ Highly flexible and elastic
- ▶ Excellent adhesion
- ▶ Solvent free, non-hazardous
- ▶ Excellent UV / weather resistant properties
- ▶ Non re-emulsifying
- ▶ Resistant to algal growth



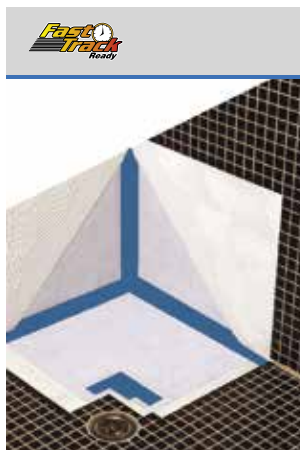
Mapelastiq AquaDefense

- ▶ **Ready-to-use, flexible, liquid waterproofing** membrane
- ▶ **Solvent-free**
- ▶ **Ultra-quick drying**
- ▶ For **internal** and **external** waterproofing applications
- ▶ Ceramic and stone material may be applied after only **4 hours**
- ▶ Class III membrane according to AS4858:2004 Wet Area Membranes and AS4654.1:2012 non-exposed waterproofing membrane - CSIRO Test Report 8056



Mapelastiq Smart

- ▶ **Two-component, high-flexibility cementitious mortar**
- ▶ For **protection** and **waterproofing**
- ▶ Used in conjunction with **Mapenet 150**, **Mapeband SA** or **Mapetex Sel**
- ▶ **Mapelastiq Smart** may be also used on surfaces particularly stressed or crazed and helps to **improve** both **elongation at break** and crack bridging
- ▶ Certified for use with Potable Water according to AS/NZS 4020:2005
- ▶ Meets AS/NZS 4858:2004 Class II Wet Area Membrane - CSIRO Test Report No 7816
- ▶ Meets the requirements of AS 4654.1:2012, non-exposed waterproofing membrane - Test Report No. 7816.1



Mapegum WPS

- ▶ **Fast drying, liquid elastic membrane** for interior waterproofing
- ▶ **Solvent-free**
- ▶ **Ready-to-use**
- ▶ Application: **smooth trowel, roller** or **spray** in two crossing coats (1 mm each)
- ▶ For **thin thicknesses** (ca. 1 mm max. per coat)



Mapeband

- ▶ **Alkali-resistant rubber tape with felt** for cementitious waterproofing systems and liquid membranes
- ▶ For **walls** and **floors**
- ▶ For **any type of substrate**
- ▶ For baths, showers, terraces, balconies, etc., that are to be tiled with ceramic tiles, marble, natural stones
- ▶ **Adesilex LP** is particularly recommended for joining **Mapeband**
- ▶ Used in combination with the **Mapelastiq** range, **Mapegum WPS** and **Aquaflex** range



Mapeband Easy

- ▶ Rubber tape sandwiched between two layers of non-woven fabric to form elastic joints in waterproofing systems
- ▶ Waterproofing corners between adjacent walls and between walls and floors.
- ▶ Waterproof elastic check joints on terraces, balconies, etc
- ▶ Used in combination with the **Mapelastiq** range, **Mapegum WPS** and the **Aquaflex** range.
- ▶ 130mm wide x 10m and 30m roll lengths
- ▶ Pre-formed 90° and 270° pieces also available



Mapeband TPE

- ▶ **TPE tape** for **flexible sealing and waterproofing** structural joints subject to movements **up to 5 or 10 mm**
- ▶ For expansion joints in road-works, water tunnels and covering applications
- ▶ **Adesilex LP** is particularly recommended for joining **Mapeband TPE**
- ▶ Embed using **Adesilex PG4**



Mapeband PE 120

- ▶ **PVC tape** for waterproofing systems formed using liquid membrane, not cementitious.
- ▶ **Flexible waterproofing** seal of edges, expansion joints, pipes and drains.
- ▶ Used in combination with the **Mapelastiq** range, **Mapegum WPS** and **Aquaflex** range

Mapeband SA



- ▶ **Self-adhesive butyl tape** with alkali-resistant, non-woven fabric for elastic waterproofing systems
- ▶ Seals between different types of material and waterproofing narrow fillets in tight spaces
- ▶ May be applied on various substrates after suitable preparation and application of a suitable primer
- ▶ Used in combination with the **Mapelastic** range, **Mapegum WPS** and **Aquaflex** range

Mapetex Sel



- ▶ **Non-woven, macro-holed polypropylene fabric**
- ▶ **Waterproofing, with synthetic polypropylene fibres**
- ▶ For **reinforcing** waterproofing membranes
- ▶ Used in conjunction with **Mapelastic Smart** or **Mapelastic Foundation**

Mapenet 150



- ▶ **Alkali-resistant** glass fibre mesh
- ▶ For reinforcing protective waterproofing layers
- ▶ **Anti-fracture membranes** and thermal insulation systems
- ▶ Used in combination with the **Mapelastic** range, **Mapegum WPS** and **Aquaflex** range

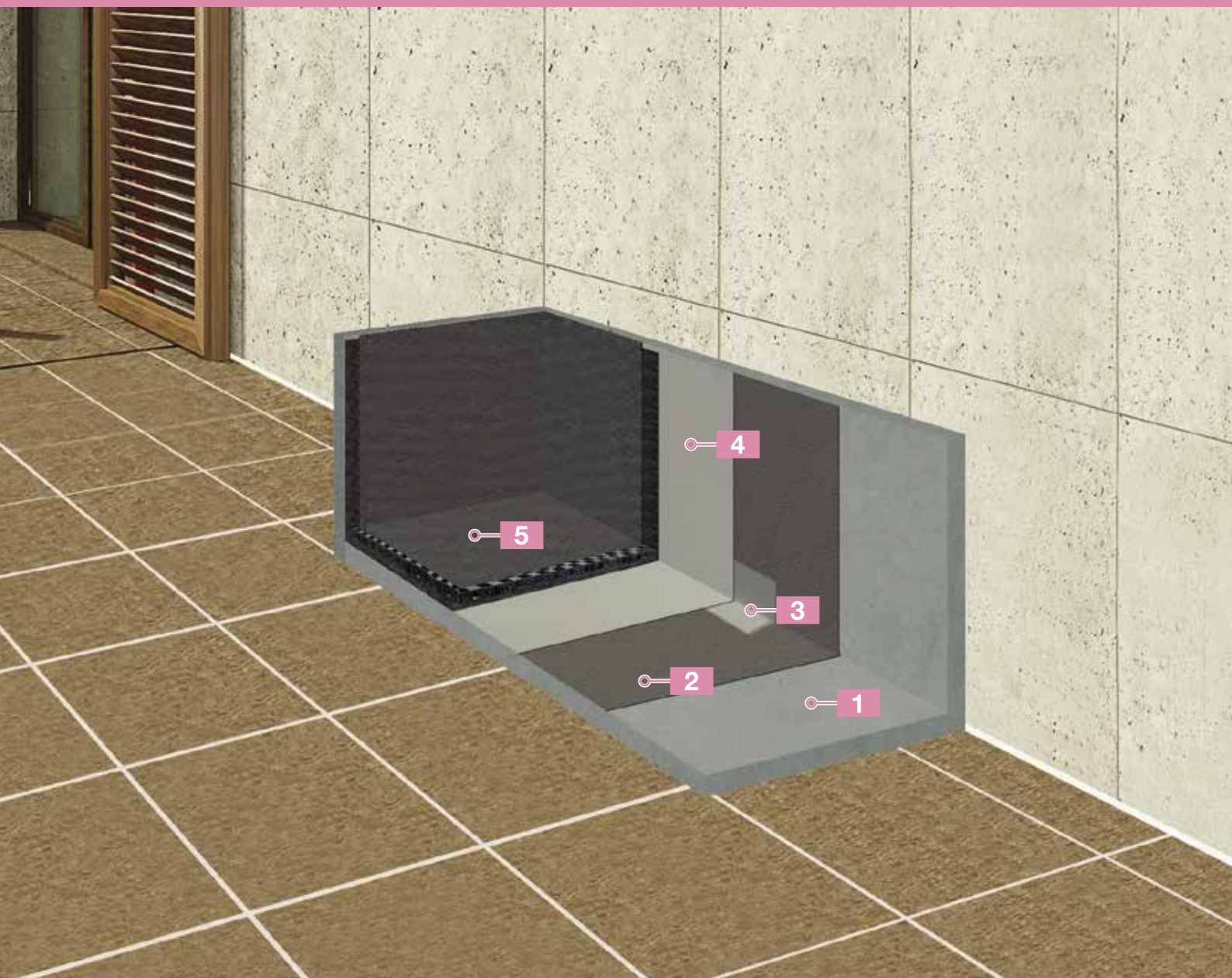
Mapetex 50



- ▶ Non-woven polypropylene fabric (weight 50 g/m²) for reinforcing waterproof membranes
- ▶ Applied in combination with **Mapelastic AquaDefense**, **Mapegum WPS** and **Aquaflex** products
- ▶ Available in 200mm and 1m wide rolls x 25m

SYSTEM FOR WATERPROOFING **PLANTER BOXES**

this system makes it possible
to obtain **GREEN STAR™** credits



concrete

1



smoothing mortar
Planitop Fast 330

2



cementitious coving
Mapegrout Fast Set

3



waterproofing membrane
Mapelastic Smart

4

membrane protection
Geotextile drainage
cell or similar

5



Mapelastic Smart



- ▶ **Two-component, high-flexibility cementitious mortar**
- ▶ For **protection and waterproofing**
- ▶ Used in conjunction with **Mapenet 150, Mapeband SA or Mapetex Sel**
- ▶ **Mapelastic Smart** may be also used on surfaces particularly stressed or crazed and helps to **improve both elongation at break** and crack bridging
- ▶ Certified for use with Potable Water according to AS/NZS 4020:2005
- ▶ Meets AS/NZS 4858:2004 Class II Wet Area Membrane - CSIRO Test Report No 7816
- ▶ Meets the requirements of AS 4654.1:2012, non-exposed waterproofing membrane - Test Report No. 7816.1



Mapelastic Foundation



- ▶ Two-component, flexible **cementitious mortar** for waterproofing
- ▶ For **concrete surfaces subject to negative or positive hydrostatic pressure**
- ▶ For **foundation walls, car-parks, environments below ground level, water channels and swimming pools**
- ▶ To be applied by **roller or spray**
- ▶ For **horizontal and vertical surfaces** at a **thickness of at least 2 mm**

Mapeband



- ▶ **Alkali-resistant rubber tape with felt** for cementitious waterproofing systems and liquid membranes
- ▶ For **walls and floors**
- ▶ For **any type of substrate**
- ▶ For baths, showers, terraces, balconies, etc., that are to be tiled with ceramic tiles, marble, natural stones
- ▶ **Adesilex LP** is particularly recommended for joining **Mapeband**



Mapeband TPE

- ▶ **TPE tape for flexible sealing and waterproofing** structural joints subject to movements **up to 5 or 10 mm**
- ▶ For expansion joints in road-works, water tunnels and covering applications
- ▶ **Adesilex LP** is particularly recommended for joining **Mapeband TPE**

Mapetex Sel



- ▶ **Non-woven, macro-holed polypropylene fabric**
- ▶ **Waterproofing, with synthetic polypropylene fibres**
- ▶ For **reinforcing** waterproofing membranes
- ▶ Used in conjunction with **Mapelastic Smart or Mapelastic Foundation**

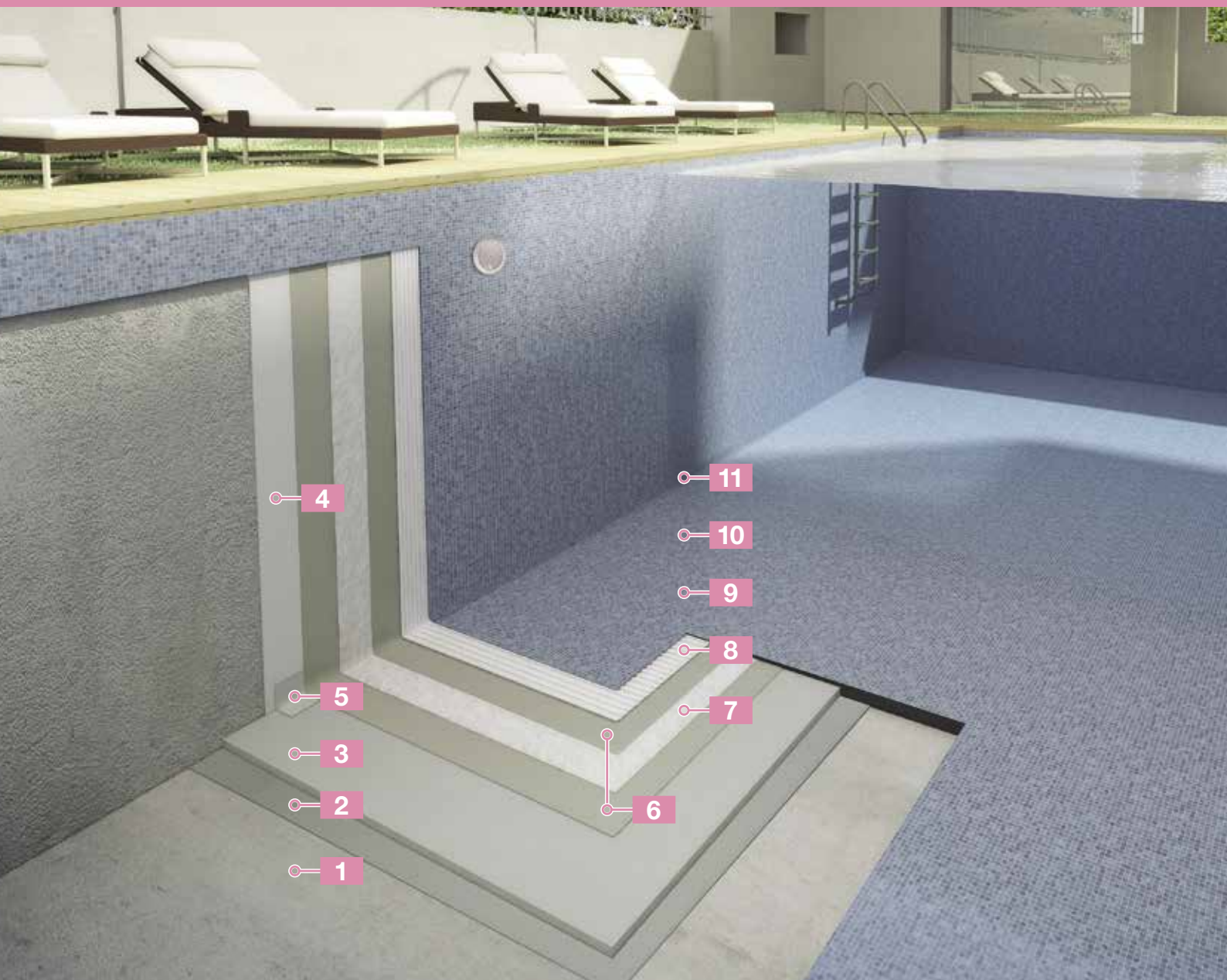


Mapenet 150

- ▶ **Alkali-resistant glass fibre mesh**
- ▶ For reinforcing protective waterproofing layers
- ▶ **Anti-fracture membranes** and thermal insulation systems
- ▶ Used in combination with the **Mapelastic** range, **Mapegum WPS** and **Aquaflex** range

WATERPROOFING SYSTEM FOR THE INSTALLATION OF GLASS MOSAICS IN SWIMMING POOLS

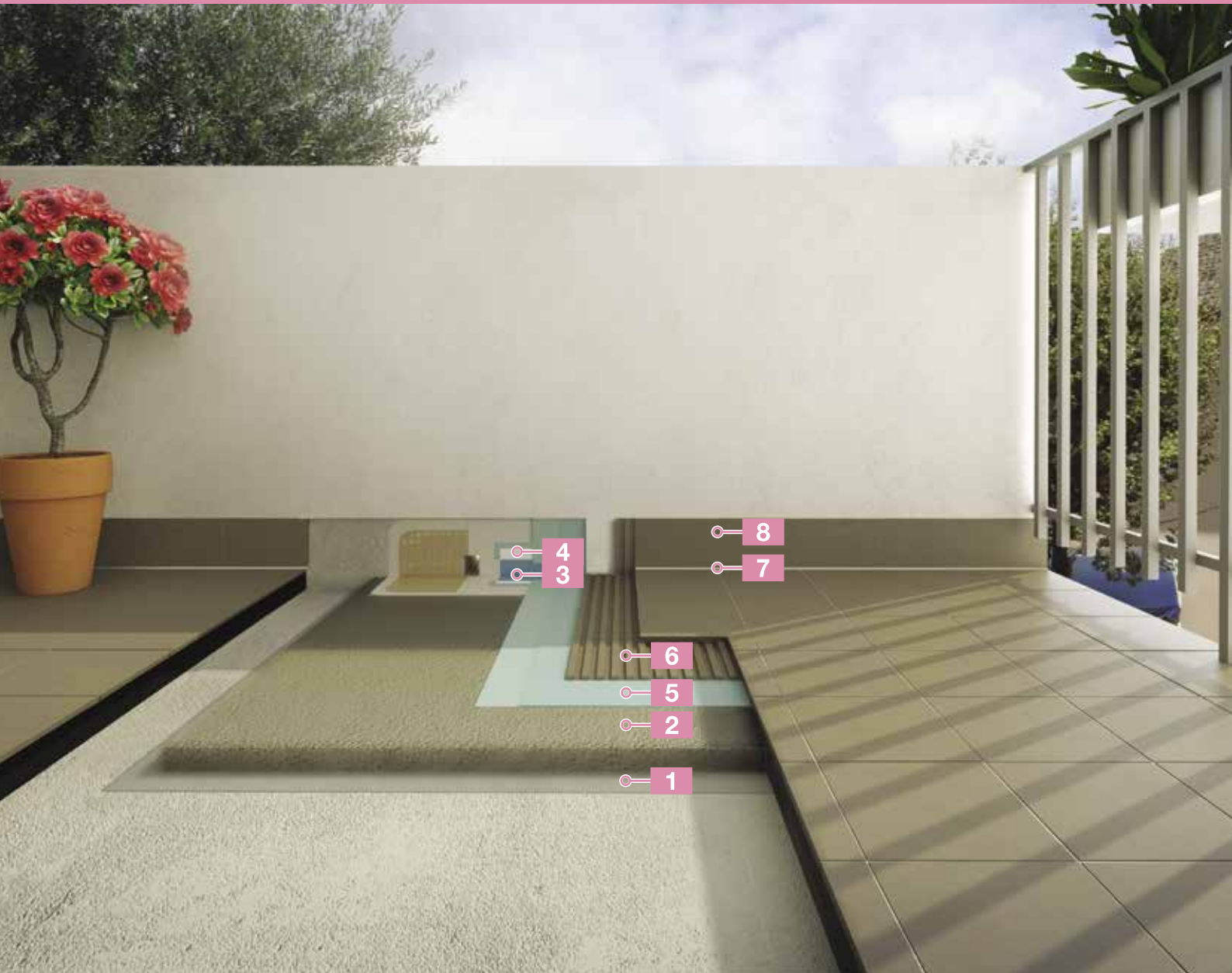
this system makes it possible
to obtain **GREEN STAR™** credits



- | | | | | | | | | | | |
|---|---|---|---|---|--|---|---|---|---|---|
|  |  |  |  |  |  |  |  |  |  |  |
| 1 | 2 | 3 | 4 | 5 | 6 | 7 | 8 | 9 | 10 | 11 |

WATERPROOFING SYSTEM FOR THE RAPID INSTALLATION OF CERAMIC TILES ON BALCONIES

this system makes it possible
to obtain **GREEN STAR™** credits



Planicrete SP

bonding slurry

1



Mapecem

screed

2



Mapeband

rubber tape

3



Mapeflex PU45

sealant &
adhesive

4



Mapelastic AquaDefense

waterproofers (2 coats)

5



Granirapid or
Keraquick S1

adhesive

6



Mapesil AC

sealant

7



Ultracolor Plus

grout

8



Mapelastic Smart



- ▶ **Two-component, high-flexibility cementitious mortar**
- ▶ For **protection and waterproofing**
- ▶ Used in conjunction with **Mapenet 150, Mapeband SA or Mapetex Sel**
- ▶ **Mapelastic Smart** may be also used on surfaces particularly stressed or crazed and helps to **improve both elongation at break** and crack bridging
- ▶ Certified for use with Potable Water according to AS/NZS 4020:2005
- ▶ Meets AS/NZS 4858:2004 Class II Wet Area Membrane - CSIRO Test Report No 7816
- ▶ Meets the requirements of AS 4654.1:2012, non-exposed waterproofing membrane - Test Report No. 7816.1



Mapelastic AquaDefense



- ▶ **Ready-to-use, flexible, liquid waterproofing membrane**
- ▶ **Solvent-free**
- ▶ **Ultra-quick drying**
- ▶ For **internal and external** waterproofing applications
- ▶ Ceramic and stone material may be applied after only **4 hours**
- ▶ Class III membrane according to AS4858:2004 Wet Area Membranes and AS4654.1:2012 non-exposed waterproofing membrane - CSIRO Test Report 8056



Aquaflex Roof Grey



- ▶ **Ready-to-use, flexible liquid membrane**, with fibres for continuous waterproofing layers on exposed external surfaces
- ▶ **Ready-to-use**
- ▶ **Set to light foot traffic**
- ▶ **Stored for 24 months** in original packaging
- ▶ **For continuous** waterproofing



Aquaflex Roof HR

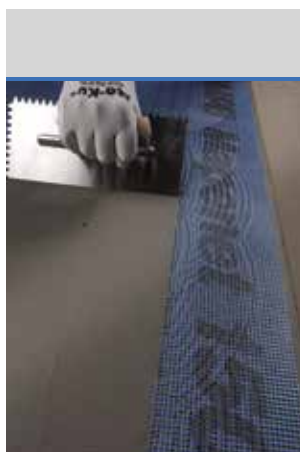


- ▶ **Fibre-filled liquid membrane in water emulsion with high solar reflectance** and thermal emittance with a high SRI solar reflectance index (105)
- ▶ **Ready-for-use**
- ▶ **Lowers the surface temperature** of the roof **by more than 50%** compared with dark coloured roofs
- ▶ **For continuous exposed** waterproofing layers
- ▶ **High reflectance white colour**



Mapetex Sel

- ▶ **Non-woven, macro-holed polypropylene fabric**
- ▶ **Waterproofing, with synthetic polypropylene fibres**
- ▶ For **reinforcing** waterproofing membranes
- ▶ Used in conjunction with **Mapelastic Smart** or **Mapelastic Foundation**



Mapenet 150

- ▶ **Alkali-resistant glass fibre mesh**
- ▶ For reinforcing protective waterproofing layers
- ▶ **Anti-fracture membranes** and thermal insulation systems
- ▶ Used in combination with the **Mapelastic** range, **Mapegum WPS** and **Aquaflex** range



Mapeband TPE

- ▶ **TPE tape for flexible sealing and waterproofing** structural joints subject to movements **up to 5 or 10 mm**
- ▶ For expansion joints in road-works, water tunnels and covering applications
- ▶ **Adesilex LP** is particularly recommended for joining **Mapeband TPE**



Mapeband

- ▶ **Alkali-resistant rubber tape with felt** for cementitious waterproofing systems and liquid membranes
- ▶ For **walls and floors**
- ▶ For **any type of substrate**
- ▶ For baths, showers, terraces, balconies, etc., that are to be tiled with ceramic tiles, marble, natural stones
- ▶ **Adesilex LP** is particularly recommended for joining **Mapeband**

Mapecband SA



- ▶ **Self-adhesive butyl tape** with alkali-resistant, non-woven fabric for elastic waterproofing systems
- ▶ Seals between different types of material and waterproofing narrow fillets in tight spaces
- ▶ May be applied on various substrates after suitable preparation and application of a suitable primer
- ▶ Used in combination with the **Mapelast** range, **Mapegum WPS** and **Aquaflex** range

Aquaflex WPU



- ▶ **Ready-to-use quick drying and flexible** Class III water-based hybrid **polyurethane** membrane for internal and external **waterproofing** applications
- ▶ Highly flexible and elastic
- ▶ Excellent adhesion
- ▶ Solvent free, non-hazardous
- ▶ Excellent UV / weather resistant properties
- ▶ Non re-emulsifying
- ▶ Resistant to algal growth

Mapecband Easy



- ▶ Rubber tape sandwiched between two layers of non-woven fabric to form elastic joints in waterproofing systems
- ▶ Waterproofing corners between adjacent walls and between walls and floors.
- ▶ Waterproof elastic check joints on terraces, balconies, etc
- ▶ Used in combination with the **Mapelast** range, **Mapegum WPS** and the **Aquaflex Roof** range.
- ▶ 130mm wide x 10m and 30m roll lengths
- ▶ pre-formed 90° and 270° pieces also available

Planiseal MR



- ▶ **Two component water based epoxy primer and moisture barrier** suitable for **green concrete** and **damp substrates**
- ▶ Can be applied to **damp substrates**
- ▶ Excellent adhesion properties even on damp concrete
- ▶ Solvent free and odourless
- ▶ Suitable for internal and external applications

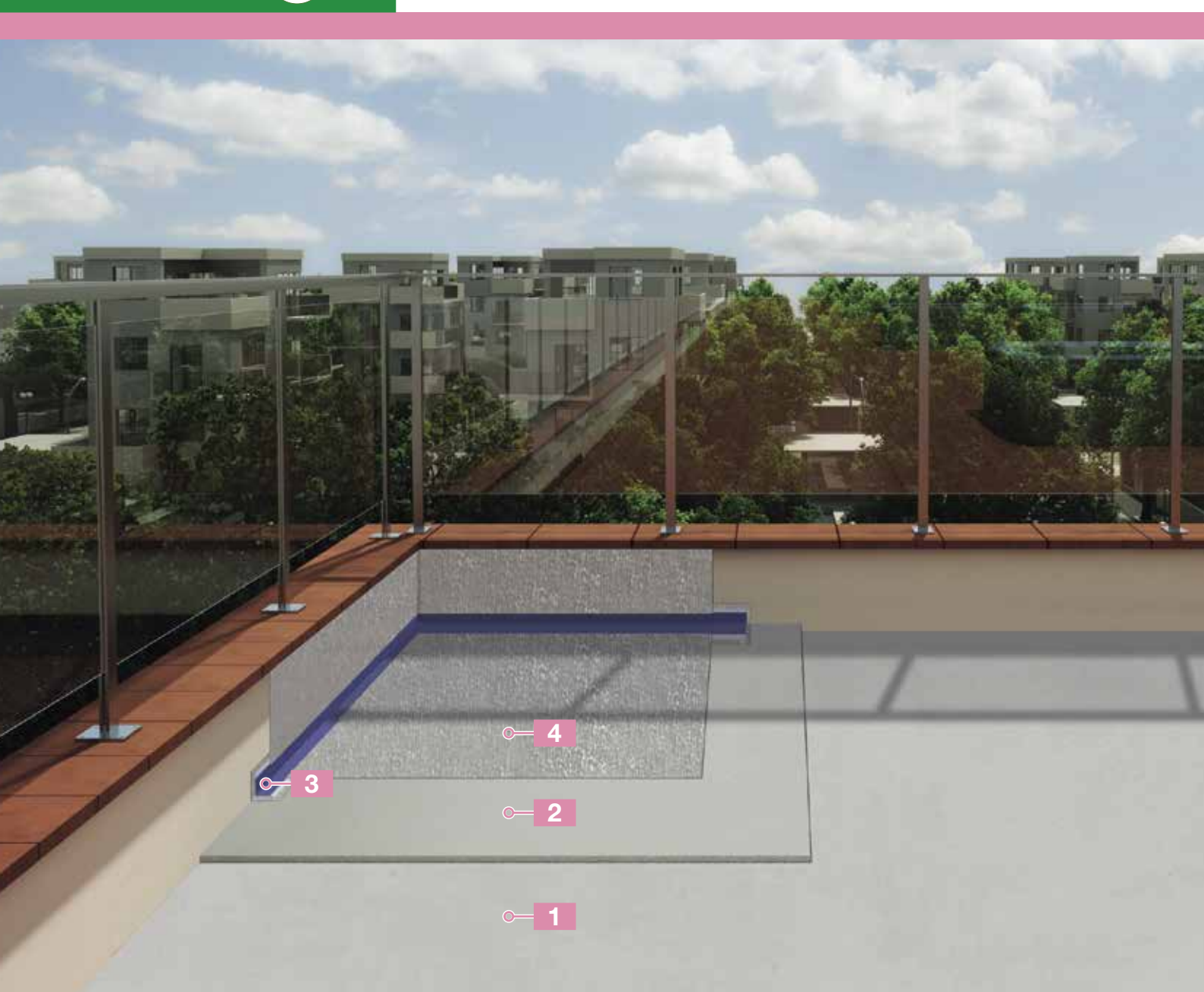
Mapetex 50



- ▶ Non-woven polypropylene fabric (weight 50 g/m²) for reinforcing waterproof membranes
- ▶ Applied in combination with **Mapelast AquaDefense**, **Mapegum WPS** and **Aquaflex** products
- ▶ Available in 200mm and 1m wide rolls x 25m

SYSTEM FOR WATERPROOFING AN EXPOSED NON-TRAFFICABLE ROOFTOP

this system makes it possible
to obtain **GREEN STAR™** credits



concrete

1



concrete patching
compound
Mapecem Quickpatch

or

2



engineered screed
Topcem Pronto



rubber tape
Mapeband

3



waterproofing membrane
**Aquaflex Roof/
Aquaflex WPU**

4

UNDERGROUND STRUCTURES



New constructions



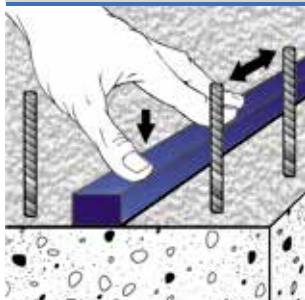
Repairs

Underground structures level: the parts of a building which are most often in contact with water and aggressive elements in the ground.

All structures below ground level come into contact with the humidity in the ground or with the water table and must be protected to guarantee the life-span of buildings. If no suitable protection is applied, there are no construction materials with the capacity of resisting the various factors which are present below ground level. MAPEI offers a wide array of repair and protection solutions which guarantee an efficient solution for any construction element.

UNDERGROUND STRUCTURES

Idrostop



- ▶ **Hydrophilic expandable rubber section** for watertight construction joints
- ▶ Specially designed to form watertight **construction joints up to a hydraulic pressure of 5 atm**
- ▶ **Bentonite-free**
- ▶ Creates an **active barrier against pressurized water** (positive and negative)
- ▶ For **concrete, metal, PVC and natural stone**
- ▶ Bond **Idrostop** to the substrate with **Idrostop Mastic**

Mapeband TPE



- ▶ **TPE tape for flexible sealing and waterproofing** structural joints subject to movements **up to 5 or 10 mm**
- ▶ For expansion joints in road-works, water tunnels and covering applications
- ▶ **Adesilex LP** is particularly recommended for joining **Mapeband TPE**

Idrosilex Pronto



- ▶ **Osmotic cementitious mortar** suitable for contact with drinking water
- ▶ For **waterproofing** foundations, walls, cellars, **basements**, lift-rooms, swimming pools, canals and reservoirs. Also safe for use on containers holding drinking water
- ▶ To be applied by **brush, trowel or spray**

Mapelastlic Foundation



- ▶ Two-component, flexible **cementitious mortar** for waterproofing
- ▶ For **concrete surfaces subject to negative or positive hydrostatic pressure**
- ▶ For **foundation walls, car-parks, environments below ground level, water channels and swimming pools**
- ▶ To be applied by **roller or spray**
- ▶ For **horizontal and vertical surfaces** at a **thickness of at least 2 mm**

Lamposilex



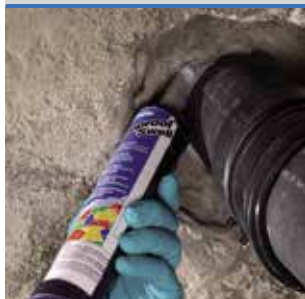
- ▶ Ultra-fast setting and drying **hydraulic binder** for plugging water leaks
- ▶ Use **Lamposilex** to **plug any source of water**, even under pressure, in basements, tunnels, subways, etc
- ▶ For **sealing watertight rigid joints** in hydraulic concrete structures, sewers, tanks and canals

Plastimul



- ▶ Solvent-free, **bitumen waterproofing emulsion** for general purpose use
- ▶ For **horizontal and vertical surfaces**
- ▶ For **foundations, retaining walls, layers beneath tiles**, etc

Mapeproof Swell



- ▶ Hydro-expansive, rubber-based hydrophilic sealant paste in tubes, applied using an extrusion pistol
- ▶ Single component used to waterproof and seal cracks in concrete
- ▶ Bonds various types of joints
- ▶ Sealing lights and drainage outlets in swimming pools and tanks.

Adesilex PG4



- ▶ Two-component, thixotropic, epoxy adhesive with modified-rheology for bonding **Mapeband** and **Mapeband TPE**, PVC braces, **Hypalon** and for structural bonding
- ▶ Can be applied on damp surfaces with no standing water
- ▶ Easy to apply with a spatula on horizontal, vertical and ceiling surfaces
- ▶ Bonds steel to concrete

Planiseal MR



- ▶ **Two component water based epoxy primer and moisture barrier** suitable for **green concrete** and **damp substrates**
- ▶ Can be applied to **damp substrates**
- ▶ Excellent adhesion properties even on damp concrete
- ▶ Solvent free and odourless
- ▶ Suitable for internal and external applications

BATHROOMS, DAMP ENVIRONMENTS, SWIMMING POOLS, BALCONIES and TERRACES

SELECTION CHART

	Horizontal and vertical surfaces	Fillets	Joints	Cross- members
BATHROOMS & DAMP ENVIRONMENTS				
Aquaflex WPU	•			
Mapelastic Smart	•			
Mapelastic AquaDefense	•			
Mapegum WPS	•			
Mapeband		•	•	•
Mapeband Easy		•	•	•
Mapeband SA		•	•	•
Mapeband PE120		•	•	•
Planiseal MR	•			
SWIMMING POOLS				
Mapelastic Foundation	•			
Mapelastic Smart	•			
Mapeband		•	•	
Mapeband Easy		•	•	•
Mapeband TPE			•	
Mapeproof Swell				•
Planiseal MR	•			
BALCONIES & TERRACES				
Aquaflex Roof Grey*	•			
Aquaflex Roof HR*	•			
Aquaflex WPU	•			
Mapelastic Smart	•			
Mapelastic AquaDefense	•			
Mapetex 50	•			
Mapetex Sel	•			
Mapeband		•	•	
Mapeband Easy		•	•	
Mapeband TPE			•	
Mapenet 150	•			
Mapeband SA		•	•	
Planiseal MR	•			

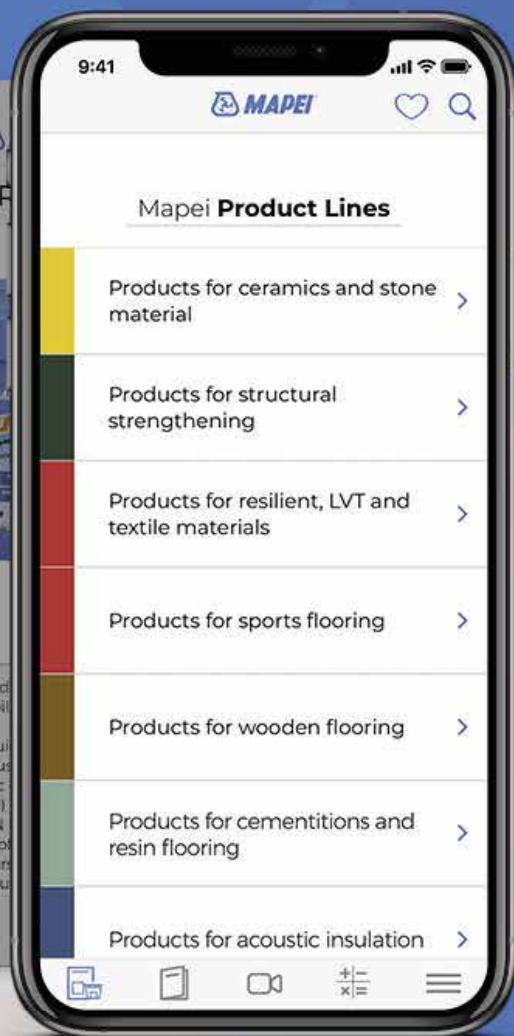
* Waterproofing layers on exposed external surfaces

UNDERGROUND STRUCTURES

SELECTION CHART

	Post-cast walls	Reinforced concrete walls with negative lift	Brick walls with negative lift	Lift shaft	Structural joint	Construction joint	Through bodies	Pile heads
UNDERGROUND STRUCTURES								
Idrostop				•		•	•	
Mapeproof Swell		•		•			•	•
Mapeband	•					•		
Mapeband TPE					•			
Idrosilex Pronto	•	•	•	•				
Mapelastic Foundation	•	•		•				
Lamposilex		•		•		•	•	
Plastimul	•							
Planiseal MR	•	•	•	•				

New **MAPEI** APP



The world of Mapei in your hands

Find out more on Mapei from our products catalogue, and from the relevant technical documentation and videos. The grouts and sealants calculator allows you to estimate the correct quantity of product needed for your project. Stay up-to date with Realtà Mapei magazine, our communication tool with the building world and with anyone appreciating and using our products.



AVAILABLE ON
App Store



AVAILABLE ON
Google Play

MAPEI AUSTRALIA
180 Viking Drive
Wacol Qld 4076
Phone: 07 3276 5000
Fax: 07 3276 5076
Email: sales@mapei.com.au
Web: www.mapei.com.au

MAPEI NEW ZEALAND
30 Fisher Crescent
Mt Wellington Auckland New Zealand
Phone: +64 9 921 1994
Fax: +64 9 921 1993
Email: enquiries@mapei.co.nz
Web: www.mapei.co.nz

