

INTERIOR LIVING 室内装饰

马贝装饰型
水泥地坪系统

ULTRATOP[®]
LOFT

 **MAPEI[®]** 马贝[®]

生活、接待和工作。如此受尊重的环境，所营造的**合适氛围**，应是凸显其**个性化的主要元素**，以审美角度和构图选材所合成，完美地让两种元素协调而构成。让水泥外观**原始的一面**呈现出来，将更优胜于常规表现。为了成就这个效果，埋藏着马贝对色调，线条性和最终效果的专注、创新想法，令其成为当代室内设计至关重要之一。此外，更多的优势在于：能够提供连贯性的地面，富有**高性能**的耐磨性和高机械强度，能承受民用环境下的最大的人流荷载量，给予**最大的稳定性**。

*LIVING, WELCOMING AND WORKING. IN PRESTIGIOUS ENVIRONMENTS. CREATING THE **RIGHT ATMOSPHERE** IS THE RESULT OF AESTHETIC AND COMPOSITIONAL CHOICES THAT HIGHLIGHT **ESSENTIALITY AND PERSONALITY**. TWO CHARACTERISTICS THAT CAN LIVE TOGETHER IN PERFECT HARMONY. CEMENTITIOUS SURFACES REPRESENT AN **ORIGINAL OPPORTUNITY** TO GO BEYOND ROUTINE CONVENTIONS. THIS IS WHAT LIES BEHIND MAPEI'S IDEA FOR A DEDICATED, INNOVATIVE PROPOSAL, IN WHICH SHADES, LINEARITY AND END RESULTS BECOME THE VITAL LYMPH OF CONTEMPORARY INTERIOR DESIGN. WITH AN ADDED ADVANTAGE: **MAXIMUM RELIABILITY**, WHATEVER THE LEVEL OF FOOT TRAFFIC, IN CIVIL SURROUNDINGS. THANKS TO ITS **HIGH PERFORMANCE** CHARACTERISTICS OF MECHANICAL AND ABRASION RESISTANCE IN CREATING CONTINUOUS, WITHOUT INTERRUPTION FLOORINGS.*

WORK SPACES

工作 空间

自由的概念旨在带有独特纹理的地面和墙身的效果，能参与到整个室内设计中。从工作区域到休闲区，不但视觉更宽广，更和谐，维护了整体构图的协调，更能同时打造属于自己的个性。通过其连续性形成室内外之间的连接。

THE CONCEPT OF LIBERTY AIMS FOR ABSOLUTE INVOLVEMENT BETWEEN FLOORS AND WALLS WHICH COME TO LIFE WITH A MARKED MATERIC IMPACT. FROM WORK SPACES TO RELAXATION AREAS, OUR VIEW CONQUERS WIDER, MORE HARMONIOUS HORIZONS WHICH, WHILE CREATING THEIR OWN PERSONALITY, SAFEGUARD THEIR OVERALL COMPOSITIONAL HARMONY. CONTINUITY WHICH IS THEN RENEWED THROUGH A DIALOGUE BETWEEN INTERIORS AND EXTERIORS.

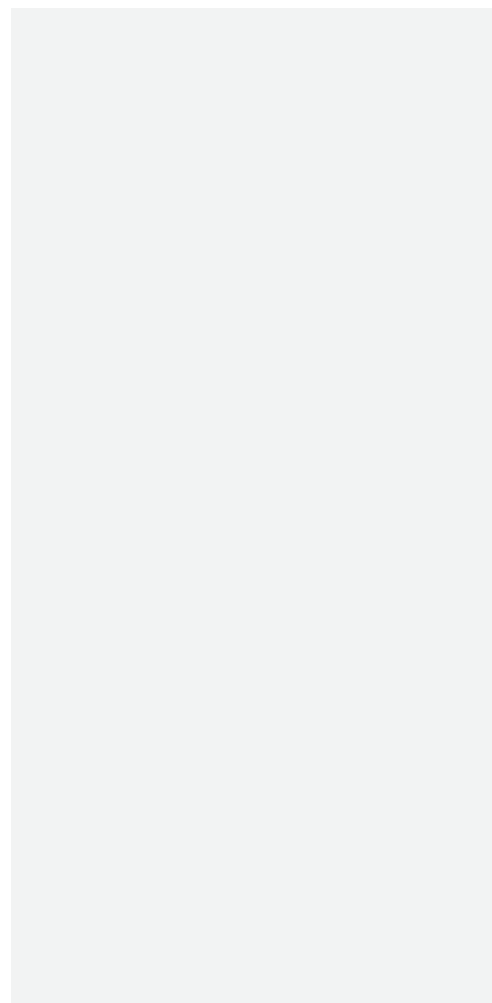




SHOWROOMS 展厅

不论是展示高级时装，
体育用品，跑车，珍贵名酒，
这类型的建筑能形成一种独特的氛围，
地板和墙身的审美对应销售摆设和灯光展示，
形成一个协调的对话。

*Whether they be they for
displaying haute couture, sports
cars or rare, precious wines,
their unifying feature is the
atmosphere that architecture is
capable of creating. The aesthetic
counterpoint between floors and
walls also involves merchandising
features and lighting displays, in a
harmonious dialogue.*





酒 店 和 餐 厅

日趋追求精致生活为建筑创作，会议和聚会的地方提供进步的空间，将视觉加入味蕾的享受，增加愉悦感。基面的色调，纹理和颜色与魅力，定义和区别融为一体，为周围的每个人提供有表现力的餐桌和休息区。



HOTELS & RESTAURANTS

The finer things in life increasingly provide privileged spaces for architectural creativity and meeting and gathering places can now add visual pleasure to those of the palate. Each individual surrounding offers an expressive force to the dining table, resting on surfaces where tones, textures and colours combine to charm, define and distinguish.





SPA CENTRES 水疗中心

带来的情感和视觉感受，
水疗中心不可或缺的一部分。
增加的创意运用，
恰如允许与水的对话。
水疗中心的远古文化与
原始路径表面的纹理高度结合。
和谐的地板表面源自于其魅力、
触觉和视觉的根源。

*NEW TEMPLES OF WELLBEING WHICH
MAKE THE VIEW AND EMOTIONAL
INVOLVEMENT AN ESSENTIAL PART OF
WHAT IS ON OFFER. WITH AN ADDED
CREATIVE EXERCISE: ITS DIALOGUE WITH
THE WATER. THE ANTIQUE CULTURE OF
SPA CENTRES COMBINES WITH HIGHLY
ORIGINAL PATHS. THE HARMONY OF THE
SURFACES IS AT THE ROOT OF THEIR
CHARM, TACTILE AS WELL AS VISUAL.*





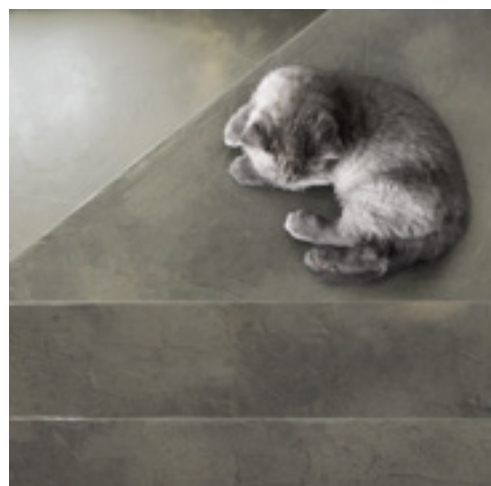


同一个框架下，不同层次的楼梯和电梯结构需要协调的设计。
对于水平面的审美选择，也可以与家具垂直整合，
创造出令人惊喜的连贯性表现力。



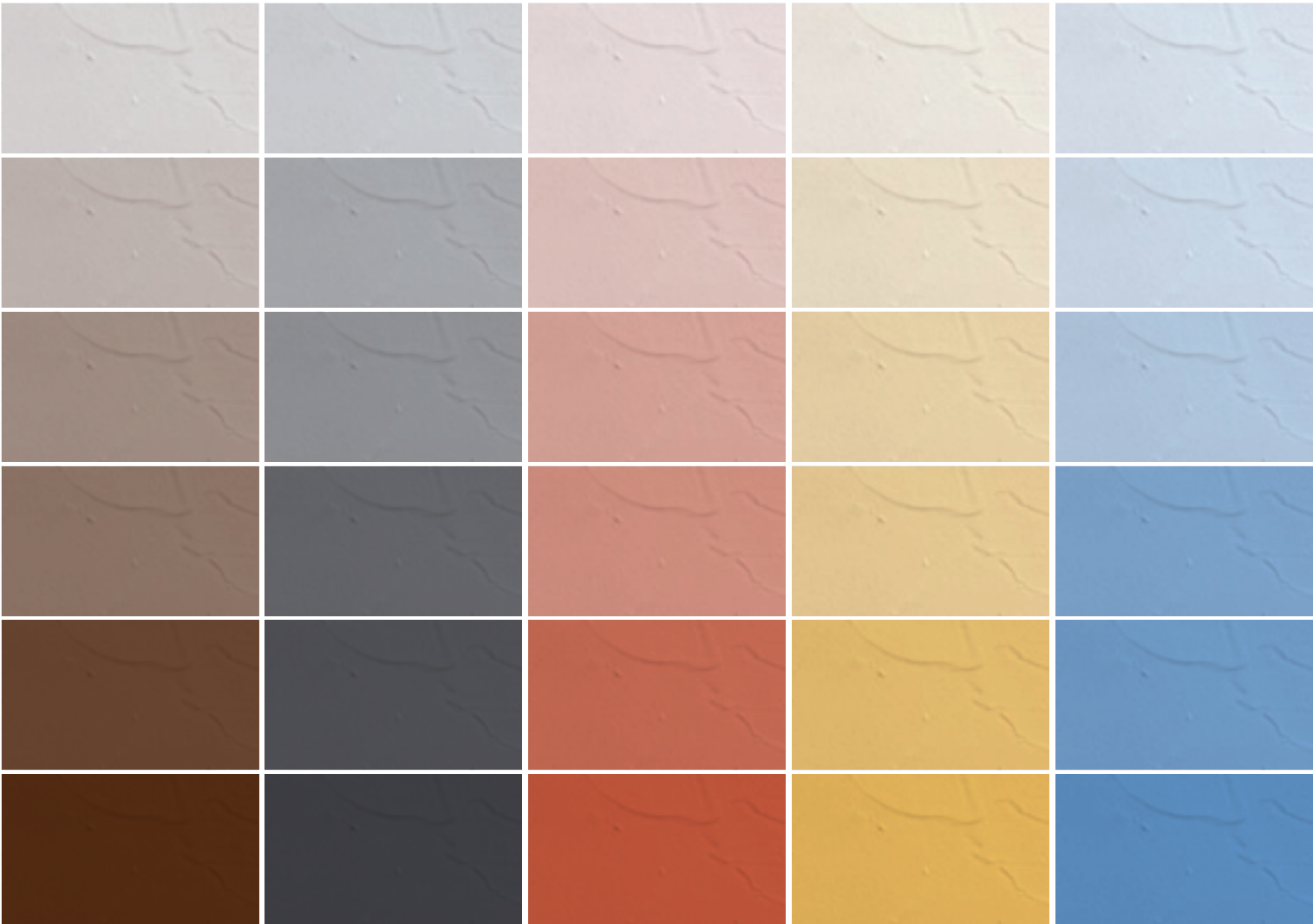
家具与 生活空间

LIVING SPACES WITH FURNISHINGS



Different levels within the same compositional framework, with stairs and lift structures that require a new harmony within their design. The aesthetic choices for horizontal surfaces may also be incorporated vertically and in furnishings, to create surprisingly expressive continuity.

白色的基底 *white base*



马贝水泥基地坪色浆
棕色

马贝水泥基地坪色浆
黑色

马贝水泥基地坪色浆
红色

马贝水泥基地坪色浆
黄色

马贝水泥基地坪色浆
蓝色

每种颜色的色调取决于投进
马贝水泥基地坪色浆至
白色或者自然色的量。
鉴于印刷工艺问题造成的色差，
请以产品的实际色彩作为指引标准。

颜色 的选择

自然色的基底
natural base



马贝水泥基地坪色浆
棕色

马贝水泥基地坪色浆
黑色

马贝水泥基地坪色浆
红色

马贝水泥基地坪色浆
黄色

马贝水泥基地坪色浆
蓝色

the **COLOUR**
CHOICE

The tone of each colour will change, depending on the amount of **Ultratop Color Paste** added to the white or natural base colours. Due to the printing processes involved, the colours should be taken as merely indicative of the shades of the actual product.

优势

advantages

- 能用于各种表面：
水平面，垂直面和天花
 - 云石效果，
单色或同系配色
 - 可混合成无数系组的色彩
 - 制备及使用简易
 - 高强度和
耐磨损
 - 适用于住宅和高密度
人流荷载的商业环境
 - 用于修复原有的基面和
创建新的涂层
 - 抗紫外线
 - 触感舒适
 - 纹理具有创意的感触效果
 - 易清洁
 - 完美，时尚，简朴
 - 维护方便
- For all types of surface:
horizontal, vertical and ceilings
 - Nuvolato effect, monochromatic
or tone on tone
 - Mixable into an infinite array of colours
 - Simple preparation and application
 - High strength and resistance
to abrasion
 - Suitable for residential surroundings and
commercial areas with intense foot traffic
 - For repairing existing surfaces and
creating new coatings
 - Resistant to UV rays
 - Pleasant to the touch
 - Textured/creative tactile effect
 - Easy to clean
 - Essential, modern, sober
 - Easy maintenance

主要用途

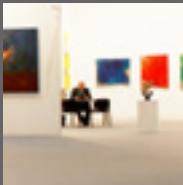
main areas of use



住宅
Residential settings



餐厅及酒店大堂
Restaurants and
Hotel lobbies



艺术画廊
Museums and
art galleries



商业环境
Commercial
areas



健身和水疗中心
Wellness and spa
centres



楼梯
Stairways

国家科学 科技博物馆 LEONARDO DA VINCI

LEONARDO DA VINCI *NATIONAL* MUSEUM OF SCIENCE AND TECHNOLOGY



1
制备马贝装饰型水泥基地坪
LOFT F

*Preparing **Ultratop Loft F***

2
使用平口金属镘刀施涂
马贝装饰型水泥基地坪
LOFT F

*Applying **Ultratop Loft F**
with a flat metallic trowel*

3
用砂纸打磨表面后，
施涂马贝装饰型水泥基地坪
LOFT W

*Applying **Ultratop Loft W**
after sandpapering of the
surface*

4
使用马贝地坪58 W作面层
*Finishing with **Mapefloor**
Finish 58 W*

技术数据

马贝装饰型水泥基地坪 LOFT F

产品特征

稠度：精细粉末

颜色：白色或自然色

体积密度(kg/m³)：1,100

固含量（%）：100

应用数据（试验环境：室温+23℃相对湿度
50%）

混合比例：约32-35份水兑100份马贝装饰型
水泥基地坪 LOFT F

稠每涂层厚度（mm）：1

混合物密度（kg/m³）：1,600

混合物ph值：11

施工温度：+ 5 至+ 35

施工时间：20分钟

凝固时间：80分钟

可供轻步荷载时间：3小时

施涂第二涂层前的等待时间：24小时

施涂面层前的等待时间：24小时

最终产品性能

23℃环境下，抗压强度（N/mm²）：

- 24小时后：8

- 7天后：18

- 28天后：25

23℃环境下，抗折强度（N/mm²）：

- 24小时后：4

- 7天后：8

- 28天后：10

耐磨性泰伯尔耐磨测试-米（H22盘，500g，
200转速）损失重量（平均值）（g）：

- 7天后：0.7

- 28天后：0.5

耐磨类别（Böhme 测试）

- 28天后：A9

马贝装饰型水泥基地坪 LOFT W

产品特征

稠度：精细粉末

颜色：白色或自然色

体积密度(kg/m³)：900

固含量（%）：100

应用数据（试验环境：室温+23℃相对湿度
50%）

混合比例：约32-35份水兑100份马贝装饰型
水泥基地坪 LOFT W

稠每涂层厚度（mm）：1

混合物密度（kg/m³）：1,600

混合物ph值：11

施工温度：+ 5 至+ 35

施工时间：20分钟

凝固时间：80分钟

可供轻步荷载时间：3小时

施涂第二涂层前的等待时间：24小时

施涂面层前的等待时间：24小时

最终产品性能

23℃环境下，抗压强度（N/mm²）：

- 24小时后：8

- 7天后：18

- 28天后：25

23℃环境下，抗折强度（N/mm²）：

- 24小时后：5

- 7天后：9

- 28天后：12

耐磨性泰伯尔耐磨测试-米（H22盘，500g，
200转速）损失重量（平均值）（g）：

- 7天后：0.7

- 28天后：0.5

耐磨类别（Böhme 测试）

- 28天后：A9

马贝水泥基地坪色浆

产品特征

稠度：膏状流体

颜色：黄色，黑色，红色，蓝色，棕色

体积密度(kg/m³)：

根据颜色，1.16至1.75不等

储存：在干燥环境下原包装，12个月

应用数据（试验环境：室温+23℃相对湿度
50%）

施工温度：+ 5 至+ 35



使用马贝装饰型水泥基地坪系统的表面，必须使用合适的面层产品养护：

- 带有光亮面的面层使用马贝地坪53W/L
- 带有缎面的面层使用马贝地坪54 W/S
- 带有不透明的面层使用马贝地坪 58W
- 带有半光泽的面层使用马贝地坪630

TECHNICAL DATA

ULTRATOP COLOR PASTE

PRODUCT IDENTITY

Consistency: fluid paste

Colour: yellow, black, red, blue, brown

Bulk density (kg/m³):

from 1.16 to 1.75 depending on the colour

Storage:

12 months in original packaging and dry place

APPLICATION DATA at +23°C - 50% R.H.

Application temperature: from +5°C to +35°C

ULTRATOP LOFT W

PRODUCT IDENTITY

Consistency: fine powder

Colour: white or natural

Bulk density (kg/m³): 900

Dry solids content (%): 100

APPLICATION DATA at +23°C - 50% R.H.

Mixing ratio:

approx. 32-35 parts water for 100 parts by weight by Ultratop Loft W

Thickness of each coat (mm): 1

Density of mix (kg/m³): 1,600

pH of mix: 11

Application temperature: from +5°C to +35°C

Workability time: 20 min.

Setting time: 80 min.

Set to foot traffic: 3 h

Waiting time before applying second coat: 24 h

Waiting time before applying finishing coat: 24 h

FINAL PERFORMANCE

Compressive strength at +23°C (N/mm²):

– after 24 hours: 8

– after 7 days: 18

– after 28 days: 25

Flexural strength at +23°C (N/mm²):

– after 24 hours: 5

– after 7 days: 9

– after 28 days: 12

Resistance to abrasion

Taber abrasion-meter (H22 disk, 500 g, 200 revs)

expressed as loss in weight (average value) (g):

– after 7 days: 0.7

– after 28 days: 0.5

Abrasion resistance class (Böhme test)

– after 28 days: A9

ULTRATOP LOFT F

PRODUCT IDENTITY

Consistency: fine powder

Colour: white or natural

Bulk density (kg/m³): 1,100

Dry solids content (%): 100

APPLICATION DATA at +23°C - 50% R.H.

Mixing ratio:

approx. 32-35 parts water for 100 parts by weight by Ultratop Loft F

Thickness of each coat (mm): 1

Density of mix (kg/m³): 1,600

pH of mix: 11

Application temperature: from +5°C to +35°C

Workability time: 20 min.

Setting time: 80 min.

Set to foot traffic: 3 h

Waiting time before applying second coat: 24 h

Waiting time before applying finishing coat: 24 h

FINAL PERFORMANCE

Compressive strength at +23°C (N/mm²):

– after 24 hours: 8

– after 7 days: 18

– after 28 days: 25

Flexural strength at +23°C (N/mm²):

– after 24 hours: 4

– after 7 days: 8

– after 28 days: 10

Resistance to abrasion

Taber abrasion-meter (H22 disk, 500 g, 200 revs)

expressed as loss in weight (average value) (g):

– after 7 days: 0.7

– after 28 days: 0.5

Abrasion resistance class (Böhme test)

– after 28 days: A9



SURFACES CREATED USING ULTRATOP LOFT MUST BE TREATED WITH THE SUITABLE FINISHING PRODUCT:

- Mapefloor Finish 53 W/L for surfaces with a shiny finish
- Mapefloor Finish 54 W/S for surfaces with a satin finish
- Mapefloor Finish 58 W for surfaces with an opaque finish
- Mapefloor Finish 630 for surfaces with a semi-gloss finish

马贝建筑材料（广州）有限公司
工厂：广东从化经济开发区丰盈路6号
电话：+86-20 8781 0701
传真：+86-20 8781 0020
邮箱：mapei-gz@mapei.com.cn

广州联络处：
广州市沿江中路313号康富来国际大厦2003-2004室
电话：+86-20 8365 3489
传真：+86-20 8365 3481

上海联络处：
上海市徐汇区中山西路1800号兆丰环球大厦16楼D座
电话：+86-21 62078088
传真：+86-21 62077088



<http://www.mapei.com.cn>

