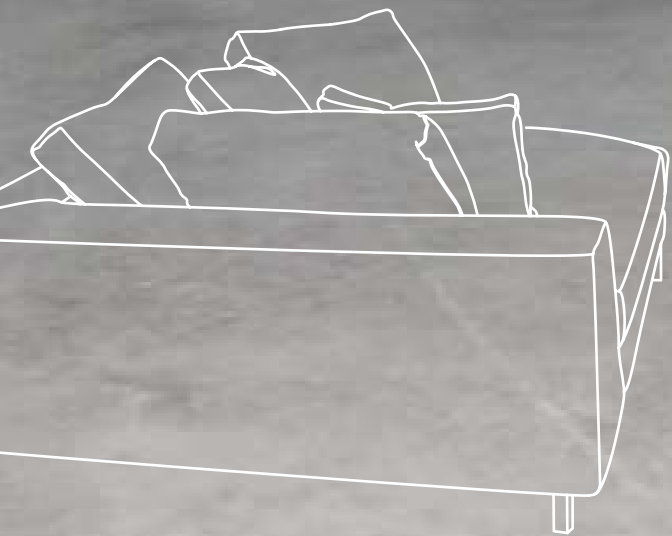


# INTERIOR LIVING



by  
**ULTRATOP<sup>®</sup>**  
**LOFT**





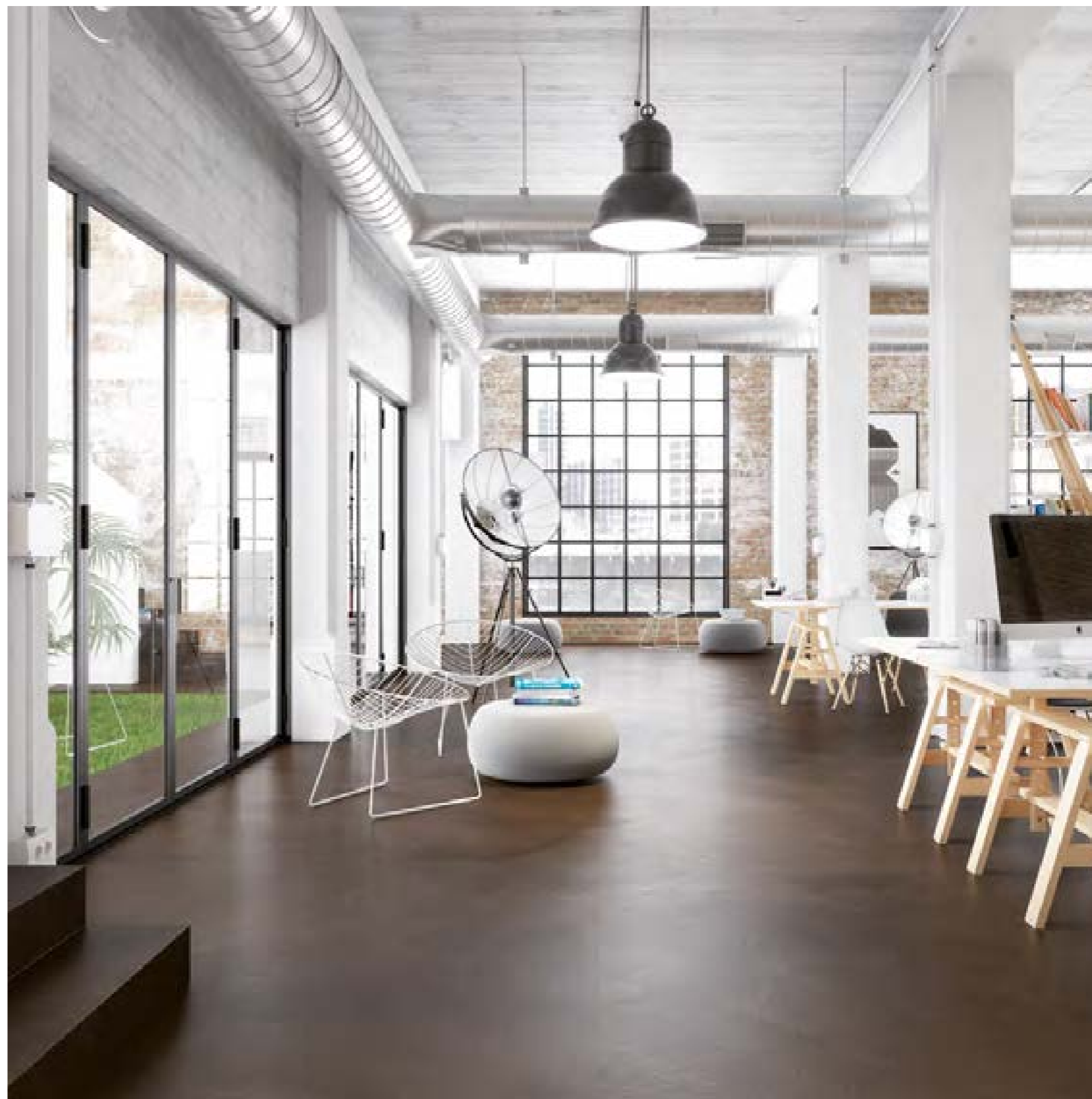
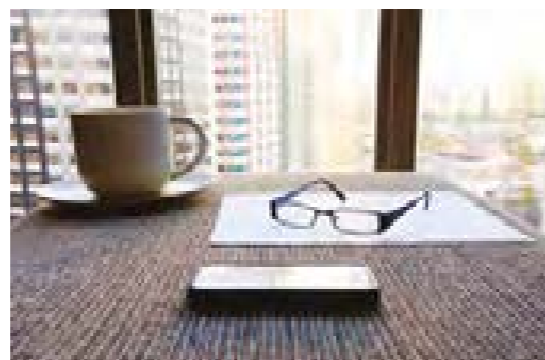
LEV, ARBEJD OG TAG IMOD GÆSTER I FORNEMME OMGIVELSER. AT SKABE **DEN IDELLE ATMOSFÆRE** ER ET RESULTAT AF ÆSTETISKE OG SMAGFULDE VALG, SOM FREMHÆVER **KVALITET OG PERSONLIGHED**. TO KARAKTERTRÆK, SOM ER I PERFEKT HARMONI MED HINANDEN. **CEMENTBASEREDE** OVERFLADER REPRÆSENTERER EN **ORIGINAL MULIGHED** FOR AT VÆLGE NOGET, UD OVER DET SÆDVANLIGE. OG DENNE TANKE LIGGER BAG MAPEIS IDE OM ET DEDIKERET OG INNOVATIVT VALG, HVORI NUANCER, LINEARITET OG SLUTRESULTATER BLIVER DEN VITALE KERNE I MODERNE INDRETNING. EN EKSTRA FORDEL: **MAKSIMAL PÅLIDELIGHED**, UANSET NIVEAUET AF GANGTRAFIK, I CIVILE OMGIVELSER. SLIDSTYRKEN OG DEN MEKANISKE STYRKE SKABER EN **HØJ YDEEVNE** OG MULIGGØR SKABELSE AF KONTINUERLIGE GULVE UDEN AFBRYDELSER.

*LIVING, WELCOMING AND WORKING. IN PRESTIGIOUS ENVIRONMENTS. CREATING THE **RIGHT ATMOSPHERE** IS THE RESULT OF AESTHETIC AND COMPOSITIONAL CHOICES THAT HIGHLIGHT **ESSENTIALITY AND PERSONALITY**. TWO CHARACTERISTICS THAT CAN LIVE TOGETHER IN PERFECT HARMONY. **CEMENTITIOUS** SURFACES REPRESENT AN **ORIGINAL OPPORTUNITY** TO GO BEYOND ROUTINE CONVENTIONS. THIS IS WHAT LIES BEHIND MAPEI'S IDEA FOR A DEDICATED, INNOVATIVE PROPOSAL, IN WHICH SHADES, LINEARITY AND END RESULTS BECOME THE VITAL LYMPH OF CONTEMPORARY INTERIOR DESIGN. WITH AN ADDED ADVANTAGE: **MAXIMUM RELIABILITY**, WHATEVER THE LEVEL OF FOOT TRAFFIC, IN CIVIL SURROUNDINGS. THANKS TO ITS **HIGH PERFORMANCE** CHARACTERISTICS OF MECHANICAL AND ABRASION RESISTANCE IN CREATING CONTINUOUS, WITHOUT INTERRUPTION FLOORINGS.*

# ARB EJD SO MRÅ DER

FRIHEDSKONCEPTETS FORMÅL ER AT SKABE EN ABSOLUT FORENELIGHED MELLEML GULVE OG VÆGGE, SOM VÆKKES TIL LIVE VIA EN MARKANT MATERIALEEFFEKT. PÅ ALT FRA ARBEJDSPLADSER TIL REKREATIVE OMRÅDER INSPIRERES VI AF UDSYN TIL BREDEREDE OG MERE HARMONISKE HORIZONTER, SOM SKABER DERES EGEN PERSONLIGHED, SAMTIDIG MED AT DE VÆRNER OM DERES TOTALE, KOMPOSITORISKE HARMONI. KONTINUITET, SOM ER FORNYET GENNEM DIALOG MELLEML INTERIØRET OG EKSTERIØRET.

*THE CONCEPT OF LIBERTY AIMS FOR ABSOLUTE INVOLVEMENT BETWEEN FLOORS AND WALLS WHICH COME TO LIFE WITH A MARKED MATERIAL IMPACT. FROM WORK SPACES TO RELAXATION AREAS, OUR VIEW CONQUERS WIDER, MORE HARMONIOUS HORIZONS WHICH, WHILE CREATING THEIR OWN PERSONALITY, SAFEGUARD THEIR OVERALL COMPOSITIONAL HARMONY. CONTINUITY WHICH IS THEN RENEWED THROUGH A DIALOGUE BETWEEN INTERIORS AND EXTERIORS.*

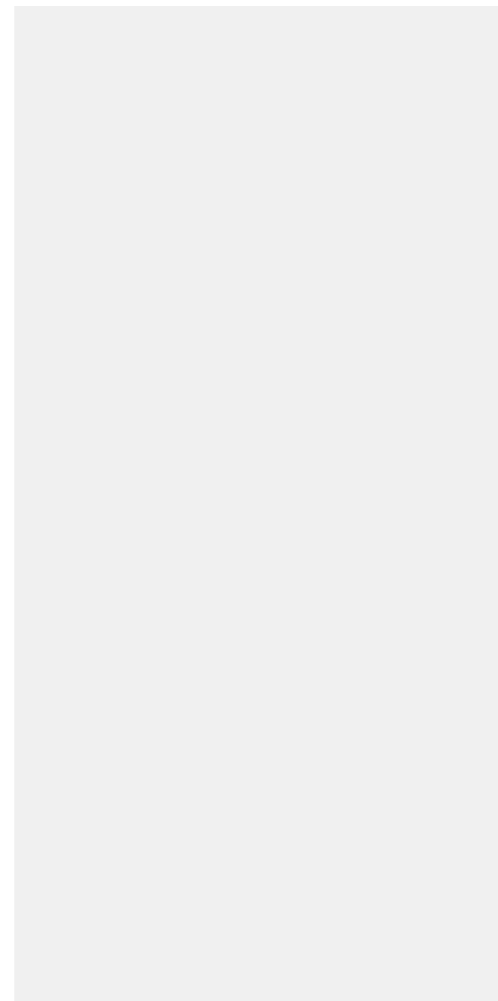


# UDSTILLINGSLOKALER

## SHOWROOMS

Uanset om de skal fremvise haute couture, sportsvogne eller sjældne, kostbare vine, giver deres forenede særpræg den atmosfære, som arkitektur er i stand til at skabe. Det æstetiske modpunkt mellem gulve og vægge involverer også en harmonisk dialog mellem belysningen og de udstillede varer.

*Whether they be they for displaying haute couture, sports cars or rare, precious wines, their unifying feature is the atmosphere that architecture is capable of creating. The aesthetic counterpoint between floors and walls also involves merchandising features and lighting displays, in a harmonious dialogue.*





## HOTELL OG RESTAURANT

Det gode liv skaber i stigende grad et privilegeret spillerum for arkitektonisk kreativitet, og møde- samt opholdrum kan nu også tilføje brugeren en visuel fornøjelse. Hver enkelt detalje i omgivelserne tilføjer spisebordet en udtryksfuld kraft, som beror på overflader, hvor kombinationen af toner, teksturer og farver tilsammen skaber charme, definition og karakteristisk.



## HOTELS & RESTAURANTS

*The finer things in life increasingly provide privileged spaces for architectural creativity and meeting and gathering places can now add visual pleasure to those of the palate. Each individual surrounding offers an expressive force to the dining table, resting on surfaces where tones, textures and colours combine to charm, define and distinguish.*





## SPA CENTER SPA CENTRES

NYE WELLNESS-TEMPLER, SOM GØR UDSIGTEN OG DET FØLELSERMÆSSIGE ENGAGEMENT TIL EN ESSENTIEL DEL AF OPLEVELSEN. OG MED EN EKSTRA, KREATIV ANVENDELSE: DIALOGEN MED VAND. DEN ANTikke SPA-KULTUR KOMBINERES MED YDERST ORIGINALE FREMGANGSMÅDER. CHARMEN, TAKTILITETEN OG DET VISUELLE UDTRYK ER RODFÆSTET I OVERFLADERNES HARMONI.

*NEW TEMPLES OF WELLBEING MAKE THE VIEW AND EMOTIONAL INVOLVEMENT AN ESSENTIAL PART OF WHAT IS ON OFFER. WITH AN ADDED CREATIVE EXERCISE: ITS DIALOGUE WITH THE WATER. THE ANTIQUE CULTURE OF SPA CENTRES COMBINES WITH HIGHLY ORIGINAL PATHS. THE HARMONY OF THE SURFACES IS AT THE ROOT OF THEIR CHARM, TACTILE AS WELL AS VISUAL.*





## **OPHOLDSRUM** **LIVING SPACES** *WITH FURNISHINGS*

Forskellige niveauer i samme kompositoriske rammer, med trapper og elevatorkonstruktioner, der kræver en ny harmoni i deres design. De æstetiske valg af horisontale flader kan også inkorporeres vertikalt samt i møbleringen, for at skabe en overraskende og udtryksfuld kontinuitet.

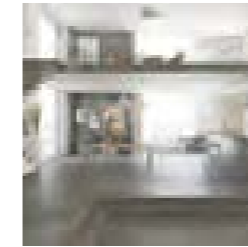


*Different levels within the same compositional framework, with stairs and lift structures that require a new harmony within their design. The aesthetic choices for horizontal surfaces may also be incorporated vertically and in furnishings, to create surprisingly expressive continuity.*

## fordele advantages

- Til alle typer overflader: Horisontale, vertikale og lofter
  - Nuvolato-effekt, monokromatisk, eller tone-i-tone
  - Blandbar i en uendelig række farver
  - Enkel klargøring og påføring
  - Høj styrke og slidstyrke
  - Velegnet til boliger og i kommercielle områder med intens gangtrafik
  - Til reparation af eksisterende overflader og dannelse af nye
  - Modstandsdygtig mod UV-stråler
  - Behagelige at røre ved
  - Struktureret/ kreativ taktil effekt
  - Rengøringsvenlig
  - Essetiel, moderne og sober
  - Nem at vedligeholde
- *For all types of surface: horizontal, vertical and ceilings*
  - *Nuvolato effect, monochromatic or tone on tone*
  - *Mixable into an infinite array of colours*
  - *Simple preparation and application*
  - *High strength and resistance to abrasion*
  - *Suitable for residential surroundings and commercial areas with intense foot traffic*
  - *For repairing existing surfaces and creating new coatings*
  - *Resistant to UV rays*
  - *Pleasant to the touch*
  - *Textured/creative tactile effect*
  - *Easy to clean*
  - *Essential, modern, sober*
  - *Easy maintenance*

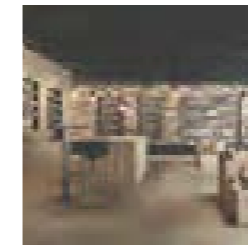
## primære anvendelsesområder main areas of use



**Beboelses-områder**  
*Residential settings*



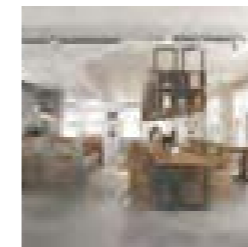
**Wellnesscentre og spabade**  
*Wellness and spa centres*



**Kommercielle områder**  
*Commercial areas*



**Museer og kunstgallerie**  
*Museums and art galleries*



**Restauranter og hotellobbyer**  
*Restaurants and Hotel lobbies*



**Trapper**  
*Stairways*





**FARVEKORT**

**COLOUR  
CHART**

# ORANGE

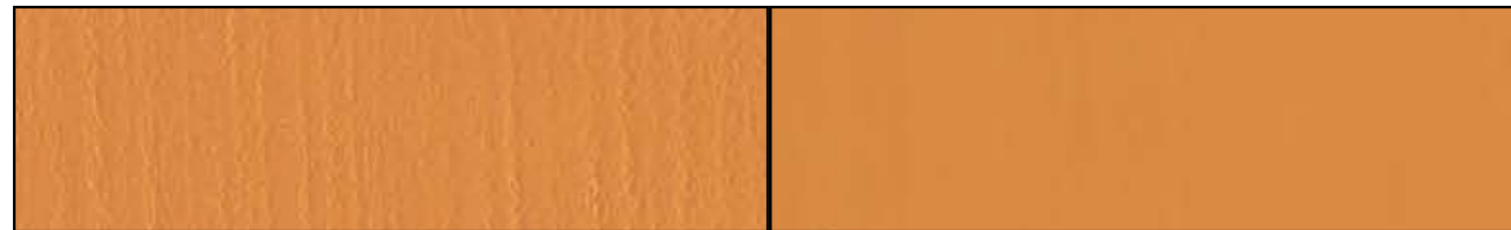
**hvid base**  
*white base*



**F**

SAHARA OR

**W**



**F**

GOBI OR

**W**



**F**

MOAB OR

**W**



**F**

KAVIR OR

**W**



**F**

SONORA OR

**W**

# ORANGE

**naturlig base**  
*natural base*



**F**

SAHARA OR

**W**



**F**

GOBI OR

**W**



**F**

MOAB OR

**W**



**F**

KAVIR OR

**W**



**F**

SONORA OR

**W**

# BLÅ

**hvid base**  
*white base*



F

CUBA BL

W



F

HAWAII BL

W



F

ZANTE BL

W



F

THAITI BL

W



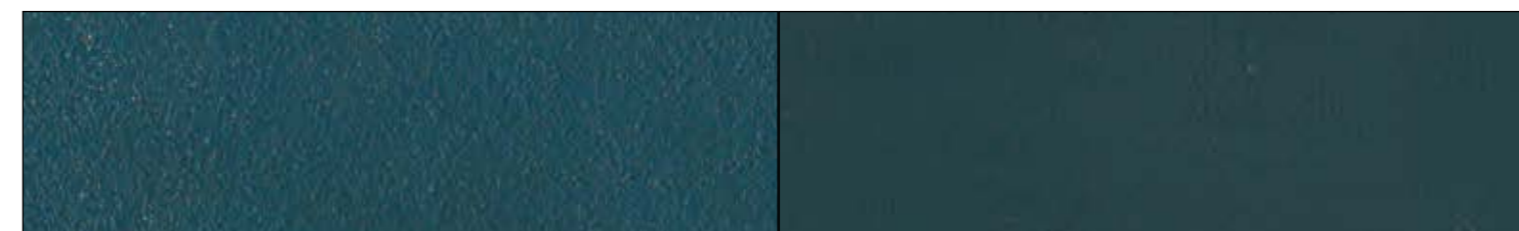
F

FIJI BL

W

# BLUE

**naturlig base**  
*natural base*



F

CUBA BL

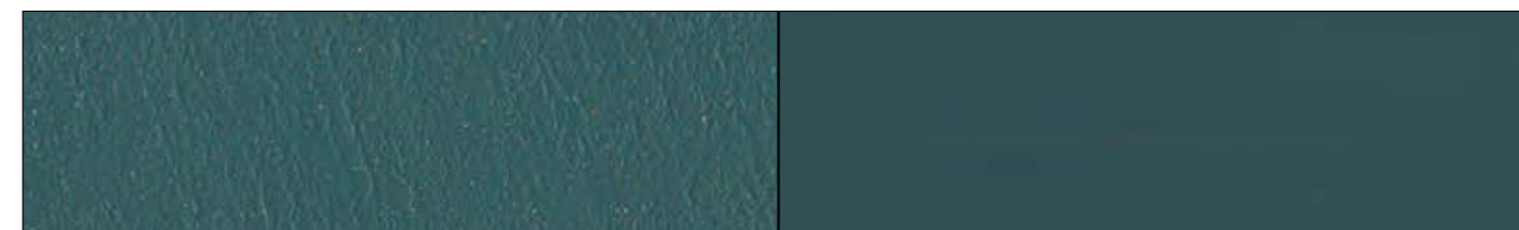
W



F

HAWAII BL

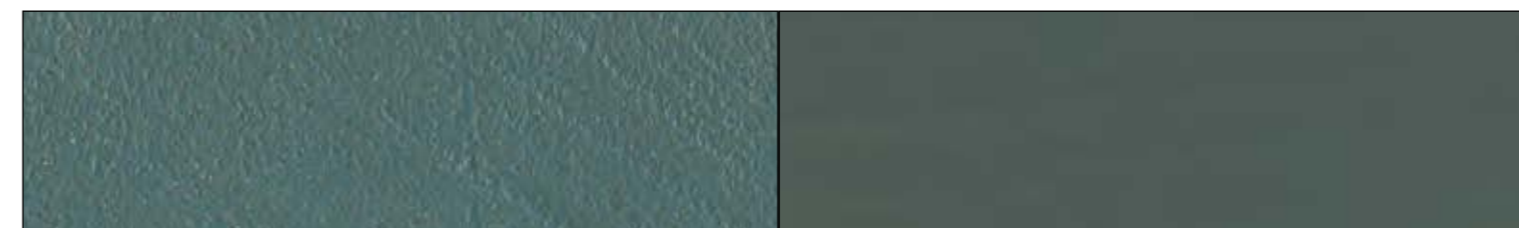
W



F

ZANTE BL

W



F

THAITI BL

W



F

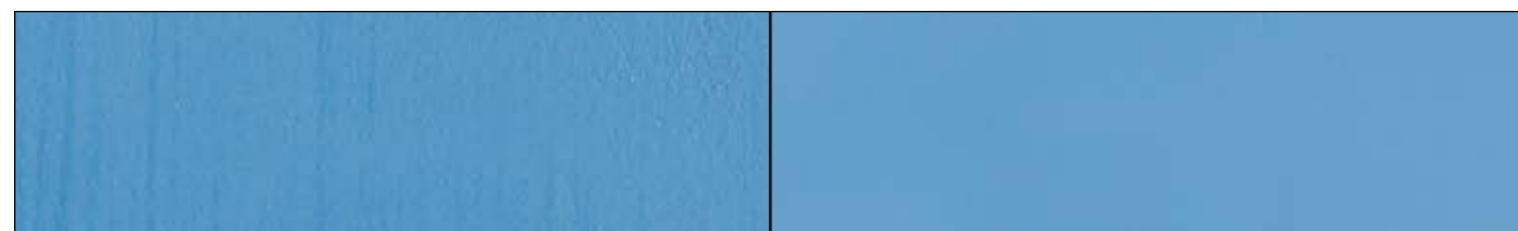
FIJI BL

W



# KOBOLTBLÅ

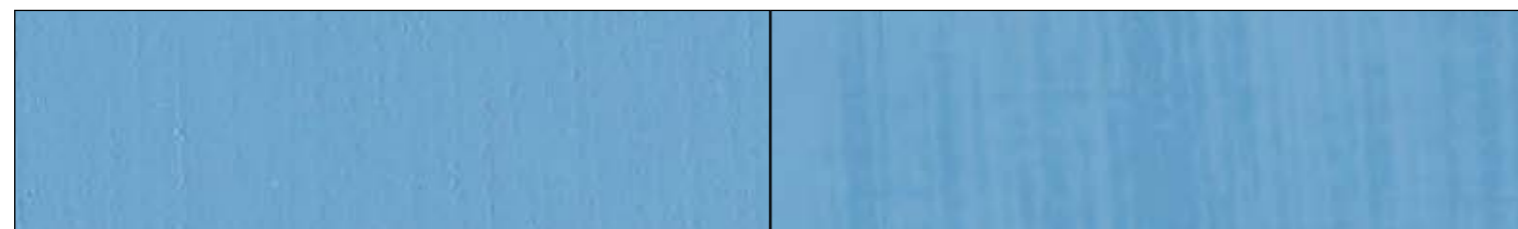
**hvid base**  
*white base*



**F**

VOLGA CO

**W**



**F**

DANUBIO CO

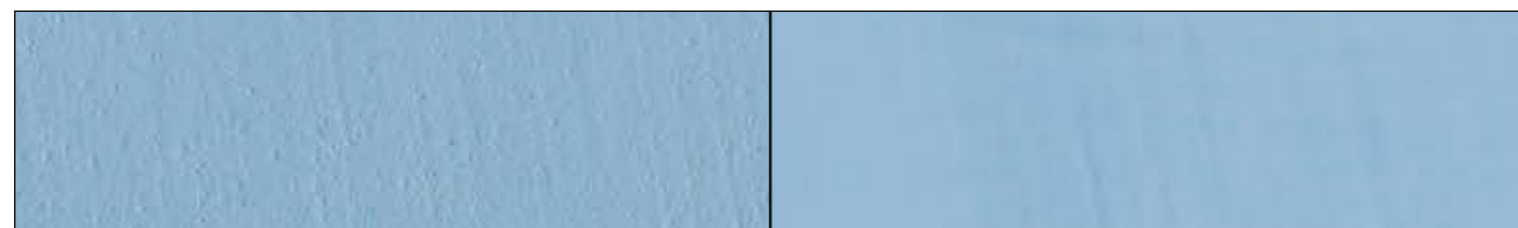
**W**



**F**

SENNA CO

**W**



**F**

RENO CO

**W**



**F**

MANHATTAN CO

**W**

# COBALT BLUE

**naturlig base**  
*natural base*



**F**

VOLGA CO

**W**



**F**

DANUBIO CO

**W**



**F**

SENNA CO

**W**



**F**

RENO CO

**W**



**F**

MANHATTAN CO

**W**

# GRÅ

**hvid base**  
*white base*



**F**

LONDON GR

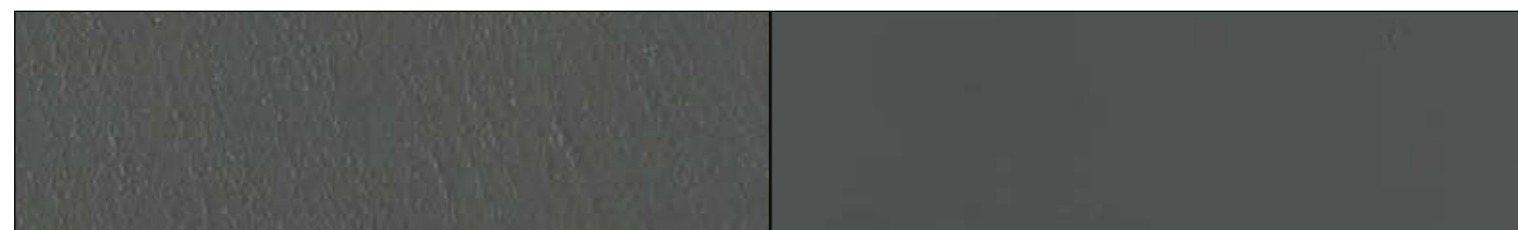
**W**



**F**

MOSCOW GR

**W**



**F**

ZURICH GR

**W**



**F**

NEW YORK GR

**W**



**F**

BERLIN GR

**W**

# GREY

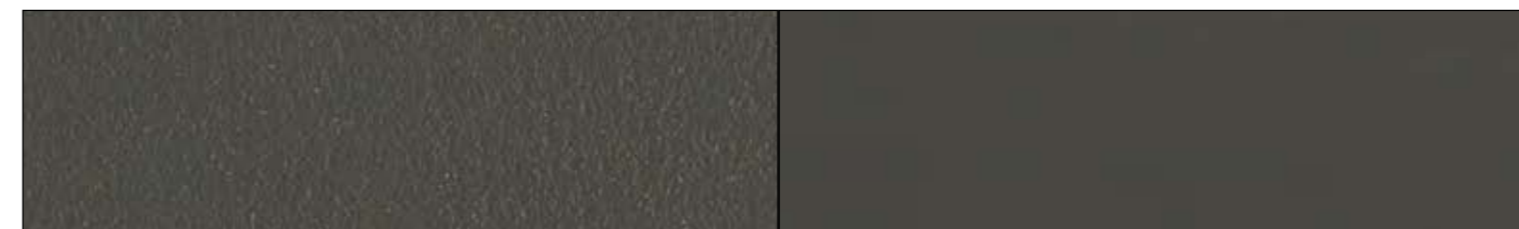
**naturlig base**  
*natural base*



**F**

LONDON GR

**W**



**F**

MOSCOW GR

**W**



**F**

ZURICH GR

**W**



**F**

NEW YORK GR

**W**



**F**

BERLIN GR

**W**



# GRÅ

**hvid base**  
*white base*



**F**

BOSTON GR

**W**



**F**

PARIS GR

**W**



**F**

VENEZIA GR

**W**



**F**

SEOUL GR

**W**



**F**

MILANO GR

**W**

# GREY

**naturlig base**  
*natural base*



**F**

BOSTON GR

**W**



**F**

PARIS GR

**W**



**F**

VENEZIA GR

**W**



**F**

SEOUL GR

**W**



**F**

MILANO GR

**W**

**BRUN**

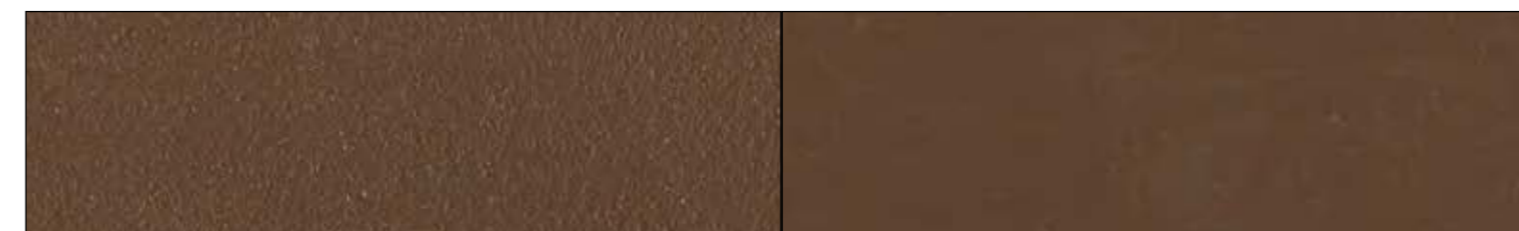
**BROWN**

**hvid base**  
*white base*

**naturlig base**  
*natural base*



**F** CHOCOLATE BR **W**



**F** CHOCOLATE BR **W**



**F** WESTERN BR **W**



**F** WESTERN BR **W**



**F** CANYON BR **W**



**F** CANYON BR **W**



**F** COCOA BR **W**



**F** COCOA BR **W**



**F** SAND BR **W**



**F** SAND BR **W**

# MØRKEBRUN

**hvid base**  
*white base*



**F**

MOKA DB

**W**



**F**

TOBACCO DB

**W**



**F**

COFFEE DB

**W**



**F**

PEPPER DB

**W**



**F**

KOLA DB

**W**

# DARK BROWN

**naturlig base**  
*natural base*



**F**

MOKA DB

**W**



**F**

TOBACCO DB

**W**



**F**

COFFEE DB

**W**



**F**

PEPPER DB

**W**



**F**

KOLA DB

**W**



# RØD

**hvid base**  
*white base*



**F**

FUEGO RE

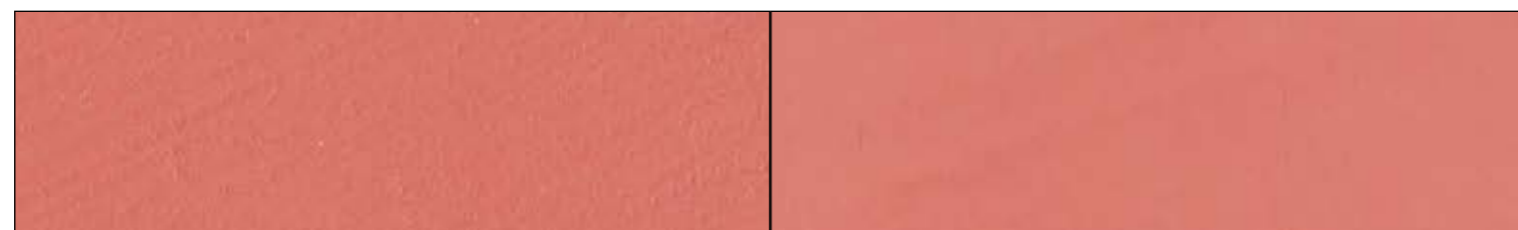
**W**



**F**

ETNA RE

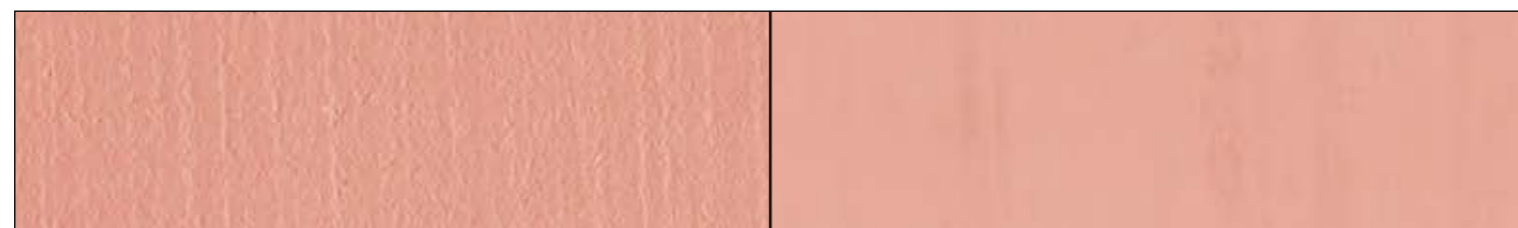
**W**



**F**

JAVA RE

**W**



**F**

VESUVIO RE

**W**



**F**

TENERIFE RE

**W**

# RED

**naturlig base**  
*natural base*



**F**

FUEGO RE

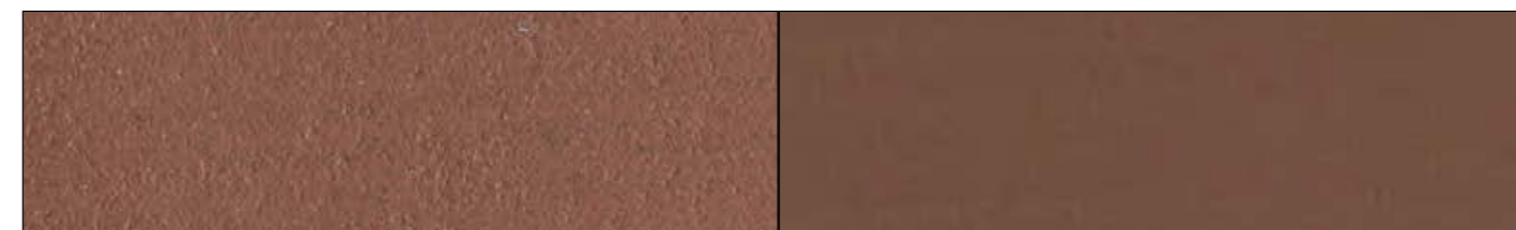
**W**



**F**

ETNA RE

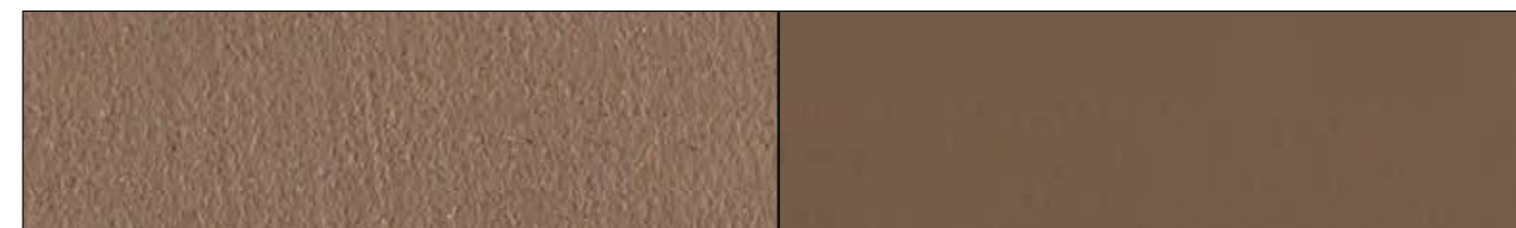
**W**



**F**

JAVA RE

**W**



**F**

VESUVIO RE

**W**



**F**

TENERIFE RE

**W**

# GRØN

# GREEN

**hvid base**  
*white base*

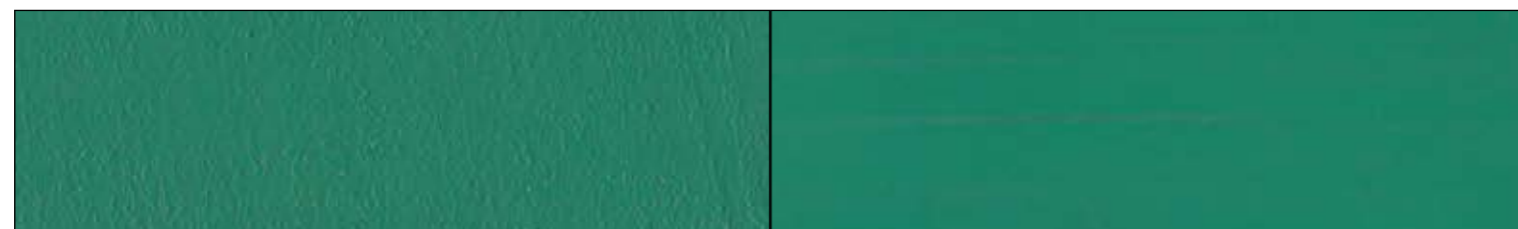
**naturlig base**  
*natural base*



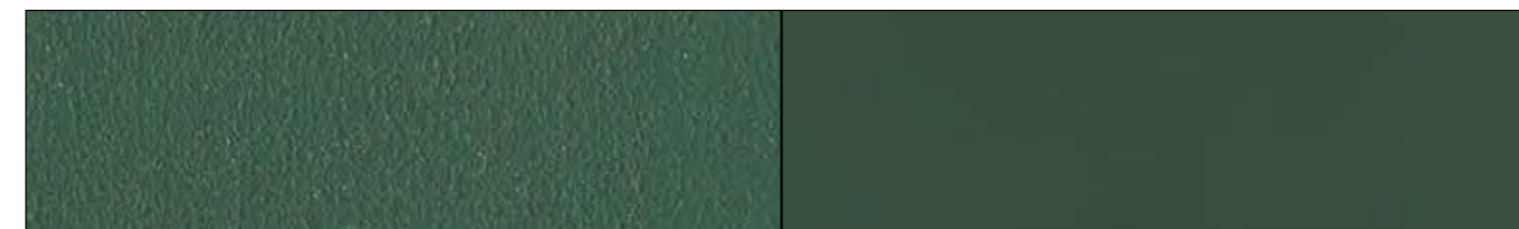
**F** BLACK FOREST GN **W**



**F** BLACK FOREST GN **W**



**F** GREEN MOUNTAIN GN **W**



**F** GREEN MOUNTAIN GN **W**



**F** BORNEO GN **W**



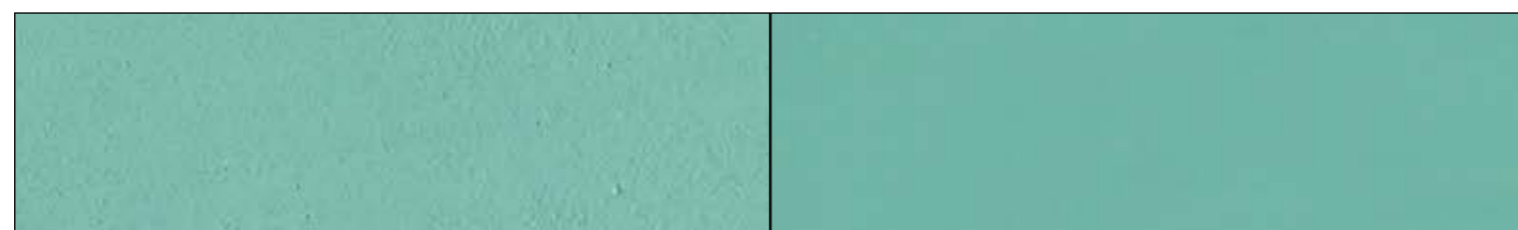
**F** BORNEO GN **W**



**F** SEQUOIA GN **W**



**F** SEQUOIA GN **W**



**F** BAMBOO GN **W**



**F** BAMBOO GN **W**



# KLAR GUL

**hvid base**  
*white base*



**F**

MIMOSA YL

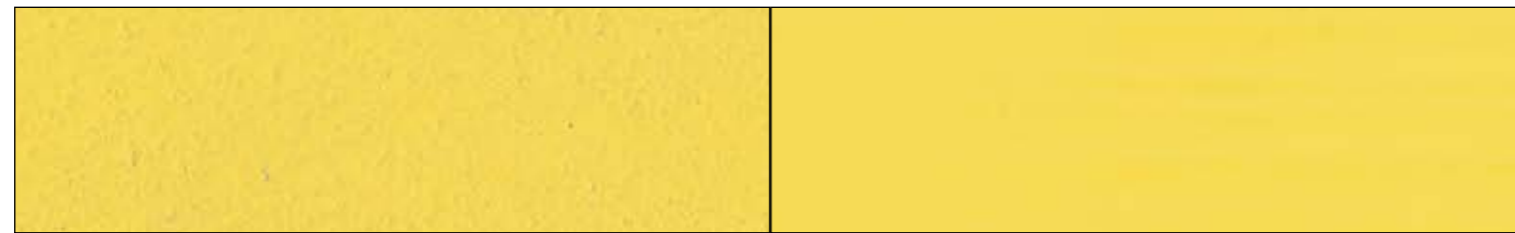
**W**



**F**

SUNSHINE YL

**W**



**F**

SUMMER YL

**W**



**F**

VANILLA YL

**W**



**F**

MAIZE YL

**W**

# BRIGHT YELLOW

**naturlig base**  
*natural base*



**F**

MIMOSA YL

**W**



**F**

SUNSHINE YL

**W**



**F**

SUMMER YL

**W**



**F**

VANILLA YL

**W**



**F**

MAIZE YL

**W**

# OKKERGUL

**hvid base**  
*white base*



**F**

SAFRAN YO

**W**



**F**

SUNFLOWER YO

**W**



**F**

AMBER YO

**W**



**F**

MANGO YO

**W**



**F**

PYRAMID YO

**W**

# OCHRE YELLOW

**naturlig base**  
*natural base*



**F**

SAFRAN YO

**W**



**F**

SUNFLOWER YO

**W**



**F**

AMBER YO

**W**



**F**

MANGO YO

**W**



**F**

PYRAMID YO

**W**



**REFERENCER**

***REFERENCES***





A



B



C



A



B

**A B**  
**Showroom IDW ITALIA**  
**(Chiavazza - Biella - Italien)**  
IDW ITALIA Showroom  
(Chiavazza - Biella - Italy)





**A**  
**Rivendita Simonetti (Civitanova Marche – Macerata – Italien)**  
Simonetti dealer (Civitanova Marche - Macerata - Italy)

**B**  
**Rivendita Vallati (Castel Del Piano – Grosseto – Italien)**  
Vallati dealer (Castel Del Piano - Grosseto - Italy)





**A B**  
**Specification Centre "Mapei World"**  
**(London – Storbritannien)**  
"Mapei World" Specification Centre  
(London - UK)



**A B C**  
**Petrof Gallery**  
**(Hradec Kralove - Tjekkiet)**  
Petrof Gallery  
(Hradec Kralove - Czech Republic)





A



B



C

**A B C**

**Showroom Saccaro  
(Porto Alegre - Brasilien)**  
Saccaro Showroom  
(Porto Alegre - Brasil)

**D E**

**Uffici Wisma Lafarge  
(Petaling Jaya - Malaysia)**  
Wisma Lafarge offices  
(Petaling Jaya - Malaysia)



D



E



A



B



C

**A B C**  
**Zhongnan Group Office @ Shanghai**  
**(Shanghai - Kina)**  
Zhongnan Group Office @ Shanghai  
(Shanghai - China)



A



B

**A B**

**Thrudesign Wood DIY Workshop (Beijing - Kina)**  
Thrudesign Wood DIY Workshop (Beijing - China)





A



B



C

**A B C**  
Museo della Scienza e della Tecnologia  
"Leonardo Da Vinci" (Milano - Italien)  
"Leonardo Da Vinci" Museum of Science  
and Technology (Milan - Italy)



**A**  
**Galleria d'Arte Moderna e  
Contemporanea  
(Republikken San Marino)**  
Modern and Contemporary Art Gallery  
(Republic of San Marino)



**B**  
**C**



**B C**  
**Museo del Carnevale di Sciacca  
(Sciacca – Agrigento – Italien)**  
Sciacca Carnival Museum  
(Sciacca - Agrigento - Italy)



**A B**  
Ristorante "A Mano" (Athen - Grækenland)  
"A Mano" restaurant (Athens - Greece)





A



B

**A B**  
**Ristorante Oyster Fish**  
**(Termoli – Campobasso – Italien)**  
Oyster Fish Restaurant  
(Termoli - Campobasso - Italy)



**A B C**  
**Park Zaryadye (Moskva – Rusland)**  
Park Zaryadye (Moscow - Russia)





**A B C**

**Santa Barbara Eco Beach Resort**  
**(Ponta Delgada - Portugal)**  
Santa Barbara Eco Beach Resort  
(Ponta Delgada - Portugal)





A



B



C



D

**A B C D**  
**Santa Barbara Eco Beach Resort**  
**(Ponta Delgada - Portugal)**  
Santa Barbara Eco Beach Resort  
(Ponta Delgada - Portugal)

**A B C D**

**Hotel Ristorante "Villa Natia"**  
**(Mottola – Taranto – Italien)**  
"Villa Natia" Restaurant Hotel  
(Mottola - Taranto - Italy)





A



B



C

**A B C**  
**Hotel Ristorante "Villa Natia"**  
**(Mottola - Taranto - Italien)**  
"Villa Natia" Restaurant Hotel  
(Mottola - Taranto - Italy)





A



B



C

**A B C**  
**Residenze Karma Line (Moskva - Rusland)**  
Karma Line Residences (Moscow - Russia)



A

**A**  
**White Exclusive Suites & Villas (Lagoa – Portugal)**  
White Exclusive Suites & Villas (Lagoa - Portugal)



[www.mapei.com](http://www.mapei.com)

**MAPEI®**

ADHESIVES · SEALANTS · CHEMICAL PRODUCTS FOR BUILDING