

Color Chart

for industrial coatings



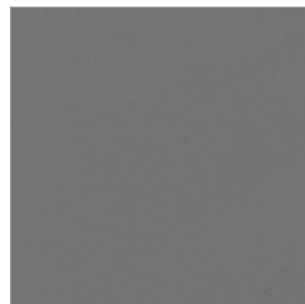
COLOR CHART EPOXY FLOORING



Grey nr. 31



Grey nr. 32



Grey nr. 33



Green nr. 73



Green nr. 75



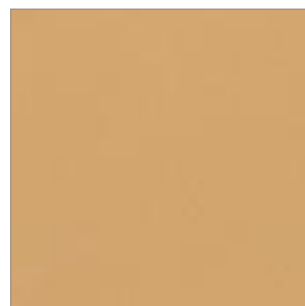
Green nr. 71



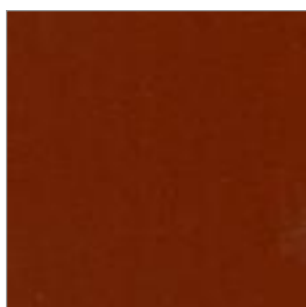
Creamy white nr. 12



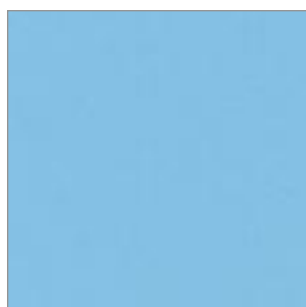
Yellow nr. 65



Yellow nr. 62



Red nr. 41



Blue nr. 51



Blue nr. 53

These colors apply to the following systems:

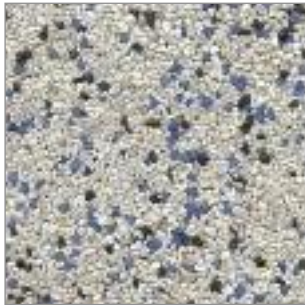
SYSTEM	INTERMEDIATE LAYER	TOPCOAT	
Mapefloor EP SL		Mapefloor SL	Self-levelling floor coating
Mapefloor EP SL S	Mapefloor SL	Mapefloor SL	Multicoat - skidresistant
Mapefloor EP C	Mapecoat I	Mapecoat I	Epoxy coating

Due to technical reasons, the colour samples shown may differ from the original colour.

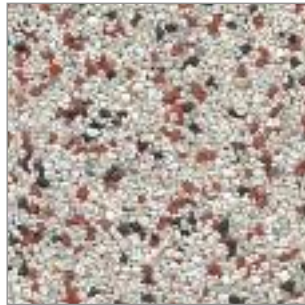
For further information, see separate technical data sheets at:

www.mapei.com

COLOR CHART FOR DECORATIVE COATINGS



R-101



R-102



R-103



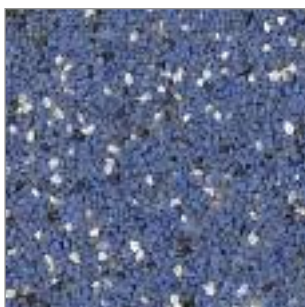
R-104



R-105



R-107



R-108



R-109



These colors apply to the following systems:

SYSTEM	BINDER	TOPCOAT	
Mapecoat EP Compact	Mapecoat Universal	Mapecoat Universal or Mapecoat PU TC - TRP	Epoxy "compact" floor
Mapecoat EP Decor S	Mapecoat Universal	Mapecoat Universal or Mapecoat PU TC - TRP	Epoxy multicoat skidresistant
Mapecoat PU/PD	Mapecoat PU Flexibinder	Mapecoat PU TC - TRP	Polyurethane parking system
Map Pro PD	Map Pro Flexibinder	Map Pro Topcoat	MMA parking system
Rescryn BC	Rescryn M 205 or Rescryn M 203	Rescryn TC 301, Rescryn TC 305 or Rescryn TC 319	MMA multicoat skidresistant
Rescryn TR	Rescryn M 205 or Rescryn M 203	Rescryn TC 301, Rescryn TC 304 or Rescryn TC 305	MMA trowel applied

-  **PRODUCTS FOR CERAMICS AND STONE MATERIALS**
-  **PRODUCTS FOR RESILIENT AND TEXTILE MATERIALS**
-  **PRODUCTS FOR WOODEN FLOORING**
-  **PRODUCTS FOR CEMENTITIOUS AND RESIN FLOORING**
-  **PRODUCTS FOR ACOUSTIC INSULATION**
-  **PRODUCTS FOR BUILDING**
-  **ADMIXTURES FOR CONCRETE**
-  **PRODUCTS FOR STRUCTURAL STRENGTHENING**
-  **PRODUCTS FOR THE REPAIR OF MASONRY**
-  **PRODUCTS FOR THERMAL INSULATION**
-  **WALL PROTECTIVE AND DECORATIVE COATINGS**
-  **PRODUCTS FOR WATERPROOFING**
-  **PRODUCTS FOR UNDERGROUND CONSTRUCTIONS**
-  **ELASTIC SEALANTS AND ADHESIVES**
-  **GRINDING AIDS FOR CEMENT**

Visit www.mapei.com for systems for cementitious and resin flooring.



Rescon Mapei AS' management system is certified in compliance with NS EN ISO 9001, NS ISO 10002, NS EN ISO 14001, OHSAS 18001 and approved according to EMAS.