

A high-angle photograph of a modern interior space. The floor is covered in a white terrazzo with dark green and black speckles. In the upper left, there is a wooden table and three orange leather chairs. In the lower right, there is a round grey table and two more orange leather chairs. A large blue rectangular overlay is positioned in the upper right quadrant, containing the text 'ULTRATOP SYSTEMS' and 'Decorative cementitious flooring'.

ULTRATOP SYSTEMS

Decorative
cementitious flooring

ULTRATOP SYSTEMS



06

ULTRATOP SYSTEM
NATURAL



10

ULTRATOP SYSTEM
POLISHED



14

ULTRATOP SYSTEM
TERRAZZO



ULTRATOP SYSTEMS

With the **ULTRATOP** systems, you can lay decorative cementitious flooring for various purposes. The nuanced mineral appearance gives these floors a unique visual signature. **ULTRATOP** systems are aesthetic, hard-wearing flooring solutions that will elevate any project – from the most ambitious to the most intimate, giving free rein to architectural creativity.

These flooring systems are ideal for new builds, but also add elegance to renovation projects.

With the **ULTRATOP** systems, you can also lay floors with a natural, mineral, patterned or heterogeneous “waxed concrete” or “terrazzo” appearance.

The systems consist of:

- an epoxy primer broadcast with natural sand
- **ULTRATOP**, a self-levelling coating in various colours, with a thickness of 5–30 mm
- various subsequent treatment systems, depending on the desired appearance: matt, semi-gloss or gloss

Thanks to their mechanical characteristics, the **ULTRATOP** systems are safe and reliable solutions for a range of applications, including:

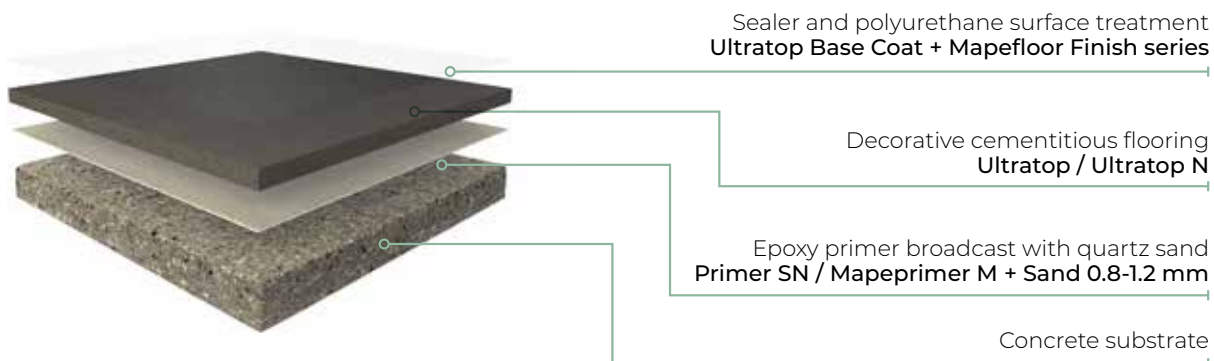
- commercial premises and warehouses
- hotels and restaurants
- showrooms and exhibition halls
- educational buildings
- civil and administrative buildings, in the public or private sectors

An **ULTRATOP** floor requires little maintenance and has a long lifespan.

ULTRATOP SYSTEM NATURAL



Decorative cast flooring based on hydraulic binders, giving a “waxed concrete” effect.



The big luxury brands are always on the lookout for a strong, exclusive identity. With the **ULTRATOP** systems, you can create unique environments with an “industrial” feel that are also elegant, classic and ideal for accentuating haute couture.

CHRISTIAN DIOR (Singapore) →



WHERE TO USE

- Residential buildings
- Offices
- Commercial premises
- Food premises
- Hotels, cafés and restaurants
- Leisure and cultural facilities
- Educational buildings

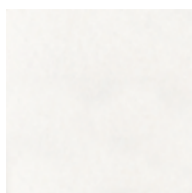


SYSTEM CHARACTERISTICS

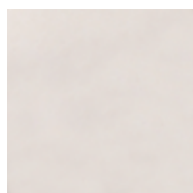
- Indoor premises: new builds and renovations.
- Thickness: 5–30 mm.
- 8 standard colours.
- High abrasion resistance.
- Consistent and homogeneous mineral appearance.
- Few joints.
- Easy to maintain.
- Matt, semi-gloss or gloss.



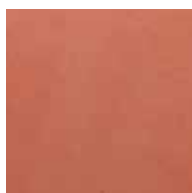
COLOURS AVAILABLE



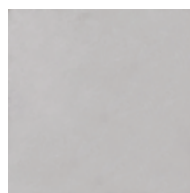
WHITE (N)



BEIGE



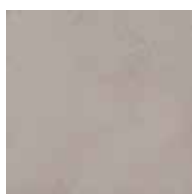
RED



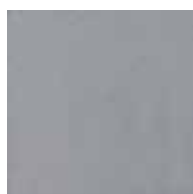
LIGHT GREY (N)



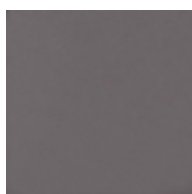
MID GREY



STANDARD



NORDIC GREY (N)



ANTHRACITE (N)



For large, joint-free natural-looking areas, it has to be **ULTRATOP SYSTEM NATURAL** and **ULTRATOP SYSTEM POLISHED**.

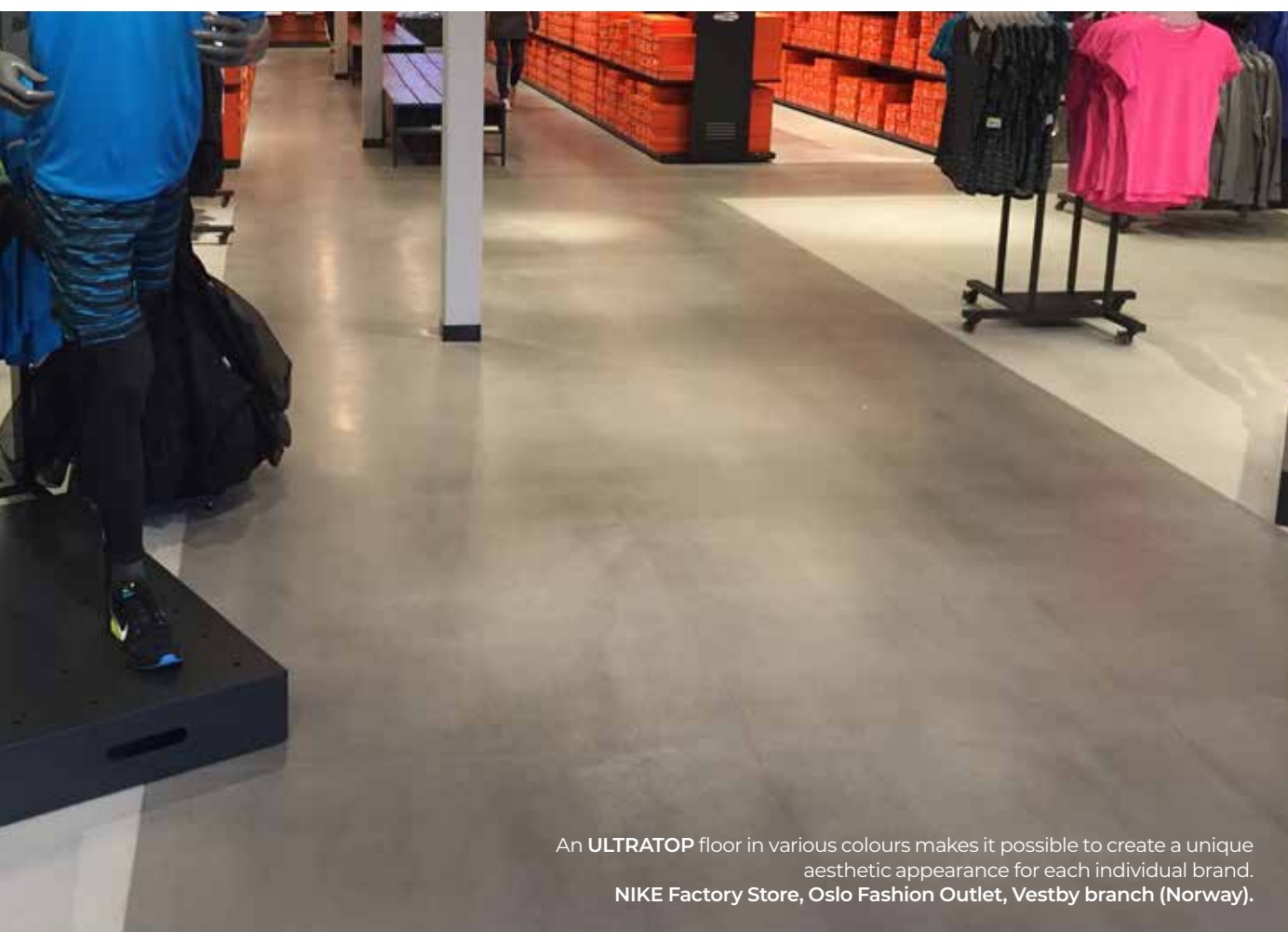
HYUNDAI MOTORSTUDIO,
Seoul (South Korea)

In urban settings, such as in sportswear stores, the **ULTRATOP** systems provide an industrial yet calm environment that makes it possible to create contrasts by accentuating fashion colours and articles.

NIKE FACTORY STORE, Vestby
(Norway)



The “studio” atmosphere of the top floor of the Ateljee Bar was accentuated by a neutral, warm-grey flooring with **ULTRATOP SYSTEM NATURAL**.
SOLO SOKOS
HOTEL TORNİ,
Helsinki (Finland)

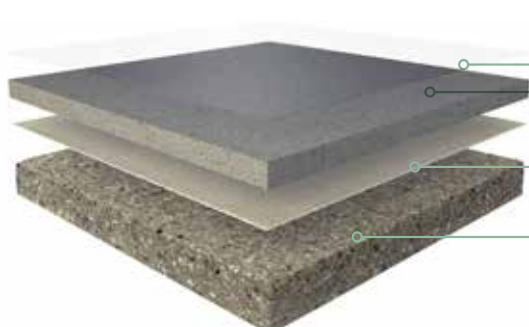


An **ULTRATOP** floor in various colours makes it possible to create a unique aesthetic appearance for each individual brand.
NIKE Factory Store, Oslo Fashion Outlet, Vestby branch (Norway).

ULTRATOP SYSTEM POLISHED



Decorative, polished cast flooring based on hydraulic binding agents, giving a “finely polished concrete” effect.



Impregnation
Mapecrete Stain Protection

Decorative cementitious flooring
Ultratop / Ultratop N

Epoxy primer broadcast with quartz sand
Primer SN / Mapeprimer M + Sand 0.8-1.2 mm

Concrete substrate

ULTRATOP SYSTEM NATURAL and **ULTRATOP SYSTEM POLISHED** can, with the use of specific application methods, provide a more or less pronounced appearance. **GALERIES LAFAYETTE, Villefontaine (France)** →



WHERE TO USE

- Residential buildings
- Offices
- Food premises
- Shopping centres
- Commercial premises
- Food halls
- Hotels, cafés and restaurants
- Transport terminals
- Leisure and cultural facilities
- Educational buildings

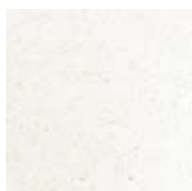


SYSTEM CHARACTERISTICS

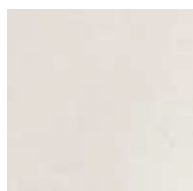
- Indoor areas: new builds and renovations.
- Thickness: 10–30 mm.
- 8 standard colours.
- High abrasion resistance.
- Consistent and homogeneous mineral appearance.
- Inlays possible (logos, motifs, different colours).
- Few joints.
- Easy to maintain.



COLOURS AVAILABLE



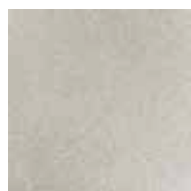
WHITE (N)



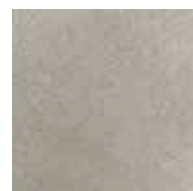
BEIGE



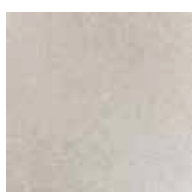
RED



LIGHT GREY (N)



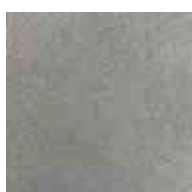
MID GREY



STANDARD



NORDIC GREY (N)



ANTHRACITE (N)



With **ULTRATOP SYSTEM POLISHED**, you can grind and polish, integrate metal elements (of brass or aluminium) or create areas with different colours, edge-to-edge. It is the ideal solution for creating highlighted areas, logos or motifs on the floor.

NIKE STORE, Prague (Czechia)





ULTRATOP SYSTEM POLISHED integrates a grinding and polishing process that makes the surface durable and highly resistant to abrasion. It is the ideal solution for commercial buildings where forklift trucks are in heavy use.

← IKEA, Milan (Italy)

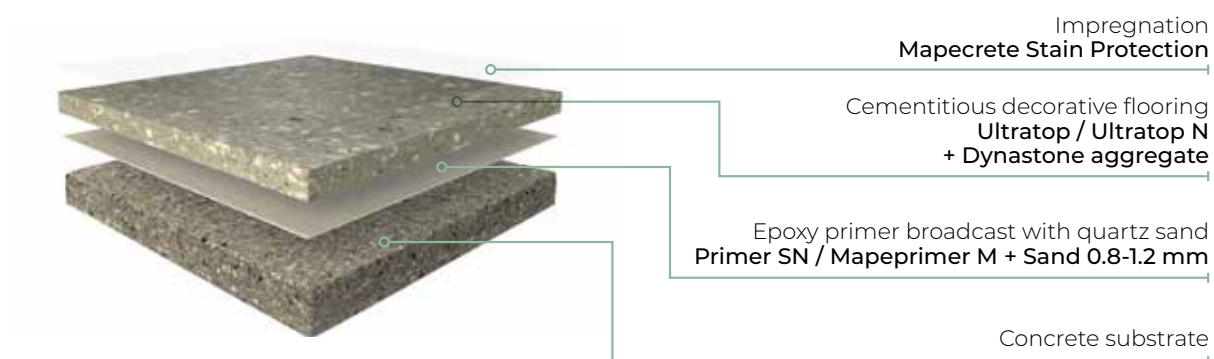
GLOUCESTER SERVICES, Gloucester (UK)



ULTRATOP SYSTEM TERRAZZO



Decorative, polished cast flooring based on hydraulic binding agents and natural aggregate, giving a “terrazzo” effect.



Terrazzo (or Terrazzo alla Veneziana, also known as granito) is a type of flooring that has been used since antiquity. The “Seminato alla Venezia” type first became popular in the 12th century in Venice and the surrounding area. It was originally used as an alternative to marble mosaics, but soon became an architectural feature of the most beautiful Venetian buildings.

In more recent times, terrazzo (or granito) has been given a new lease of life thanks to various technological advances and much improved construction techniques. The first step was to replace lime with cement, and then specific materials for grinding and polishing were introduced.

In France, granito played an important part in the Art Deco movement in the early 20th century. It then became widespread in the form of prefabricated tiles in the 1950s and 60s, a period that greatly contributed to a decline in reputation of the material.

In recent years, however, terrazzo has gradually regained the respect it deserves, as part of the trend for cast jointless mineral surfaces.

ULTRATOP SYSTEM TERRAZZO is an ideal solution for both new builds and renovations – even the most ambitious projects.



© Norbert Tukaj / Aketuri Architektai



WHERE TO USE

- Residential buildings
- Offices
- Food outlets
- Shopping centres
- Commercial premises
- Food halls
- Hotels, cafés and restaurants
- Transport terminals
- Leisure and cultural facilities
- Educational buildings

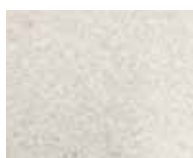
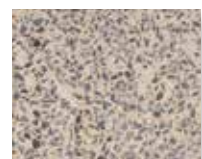


SYSTEM CHARACTERISTICS

- Indoor areas: new builds and renovations.
- Thickness: 8–30 mm.
- Countless possibilities for personalised design based on 8 standard colours.
- High abrasion resistance.
- Consistent and homogeneous mineral appearance.
- Inlays possible (logos, motifs, different colours).
- Few joints.
- Easy to maintain.



EXAMPLE DESIGNS





© NORBERT TUKAJ / AKETURI ARCHITEKTAI



ULTRATOP SYSTEM TERRAZZO

allows you to create Terrazzo alla Veneziana with a traditional appearance, similar to the floors that were laid in Venice many centuries ago.

© STÉPHANE CALLEJON / GALERIES LAFAYETTE PRADO, FRANCE



© GALERIES LAFAYETTE CARRÉ SÉNART, France

MAPEI AS
Vallsetvegen 6
2120 Sagstua
Norway
+47 62 97 20 00
post@mapei.no
mapei.no