

## AREAS OF APPLICATION

- + Pedestrian traffic areas
- + Vehicle wash halls
- + Kitchens
- + Food & beverage production and processing industry
- + Workshops / Mechanical industry
- + Fish processing

This system is especially well suited for locations with requirements for non-slip surfaces commonly used in the food and beverage industry.

## SYSTEM DESCRIPTION

This system consists of products that give a seamless dust-free floor suitable for industrial flooring and commercial buildings where moderate to high mechanical loads can occur.

The system is normally applied in a thickness of approx. 3-5 mm creating a durable and resistant finish. This system is delivered in different sand colours based on **Mapequartz Color**.

Special colours and sand mixtures may be ordered. Alternatively the flooring may be delivered as smooth finish (**Mapefloor EP Compact**).

The products do not contain organic solvents and is practically odour free during application. The system ensures quick installation and use, and the final product poses no health or environmental hazard to the user.

## PROPERTIES

The system is well suited for substrates with exacting requirements for flooring with:

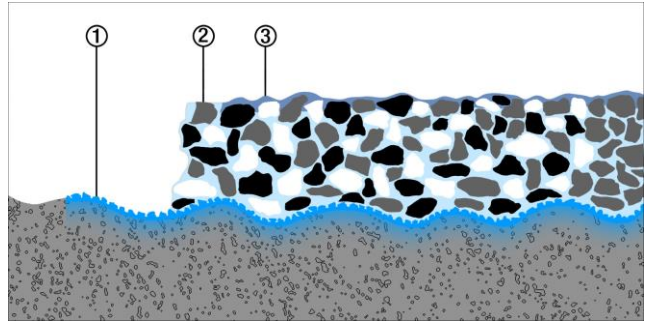
- + Waterproof, dust-free and seamless surfaces
- + Good wear resistance
- + Good chemical resistance against alkalis, oils and grease
- + Hygienic, easy-to-clean and easy to maintain
- + Anti slip properties
- + Pressure distribution from 4 mm
- + In service temperature up to 60°C

## SYSTEM STRUCTURE

### Substrate / Pretreatment

The substrate should be pretreated by sanding, grinding or blast cleaning and should be dry, clean and free of dust, oil, grease etc.

The system is well suited for use on concrete substrates and other cement based substrates.



### 1 Primer

**Mapeprimer M** - for damp surfaces and difficult substrates or **Mapecoat Universal**

Two-component solvent free epoxy to be applied with roller, and broadcasted with **Mapequartz Color** 0.3-0.8 mm or 0.7-1.2 mm.

### 2 Epoxy binder

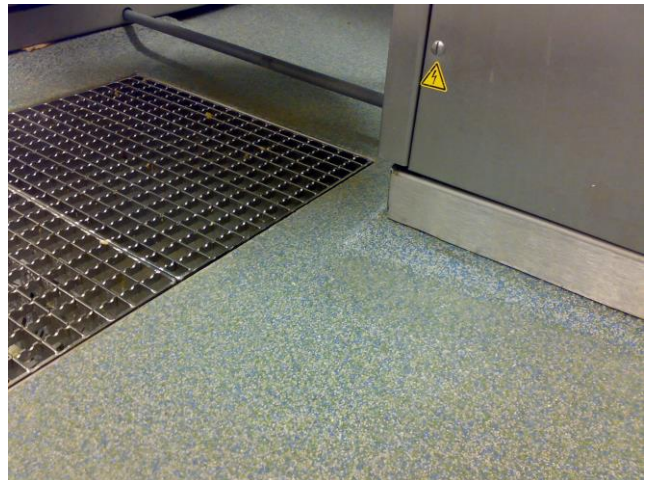
**Mapecoat Universal**

Two-component solvent free transparent epoxy. Can be mixed with **Compaktmjøl** (1:1) and applied in an even thickness. Broadcast with **Mapequartz Color** 0.3-0.8 mm or 0.7-1.2 mm to a surplus.

### 3 Epoxy topcoat

**Mapecoat Universal**

Two-component solvent free transparent epoxy. Applied in one or more layers using a rubber scraper.



## OTHER INFORMATION

- + Technical Data Sheet (TDS) and Material Safety Data Sheets (MSDS) are available at [www.mapei.com](http://www.mapei.com)
- + Work Descriptions
- + Operation and maintenance manual
- + Labor Inspection Brochure # 377 on thermosetting