

## AREAS OF APPLICATION

- + Showrooms
- + Museums and galleries
- + Hotels and restaurants
- + Spas and wellness centres
- + Office locations and public areas
- + Residential areas

## SYSTEM DESCRIPTION

This system consists of products that give a seamless coating suitable for all floors with pedestrian traffic and commercial/industrial floors.

The floor coating is normally applied in a total thickness of approx. 1-2 mm, consisting of a structure with a primer, an cement based basecoat and a UV-resistant polyurethane or acrylic top coat. The system gives a durable surface and is available in a wide variety of colors and finishes.

The final product holds no risk to the health of the user.

## PROPERTIES

The system is well suited for substrates with exacting requirements for floors with:

- + Dust-free and seamless surfaces
- + Very good wear resistance
- + Highly attractive patterns and finishes
- + Hygienic, easy to clean and easy to maintain
- + Very good UV-resistance
- + Possible with the same design on walls and ceilings
- + Tested, documented and CE market according EN 13813

## SYSTEM STRUCTURE

### Substrate / Pre-treatment

The substrate should be pre-treated by grinding, cleaning and should be dry, clean and free of dust, oil, grease etc.

The system is well suited for use on concrete and other cement based substrates. For other substrates, an evaluation of suitability should be done.

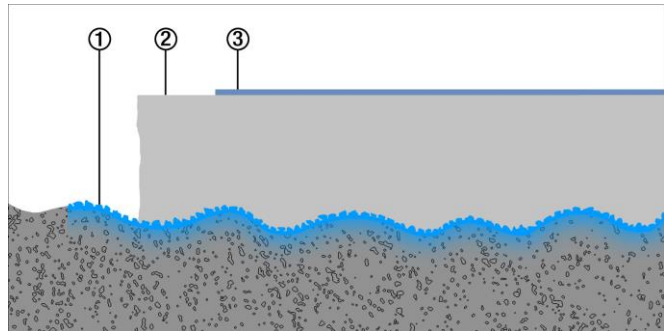
### 1 Primer

**Primer SN** – standard primer or

**Mapeprimer M** – for damp surfaces, difficult substrate

Two-component solvent free epoxy primer. Broadcasted with dry sand 0-1-0.4 mm until it's fully saturated.

The substrate can be strengthened by installing **Mapenet 150** in the uncured primer.



### 2 Basecoat

**Ultratop Loft F** – rough structure in white or natural base color

**Ultratop Loft W** – fine structure in white or natural base color

Cement based mortar mixed with water or pigmented **Ultratop Easycolor**. Apply with a flat trowel in a minimum of 2 layers. Before applying the second layer, grind and prime the surface using **Primer LT** (1:1 with water). The surface should be grinded as well before applying top coat.

### 3 Top coats

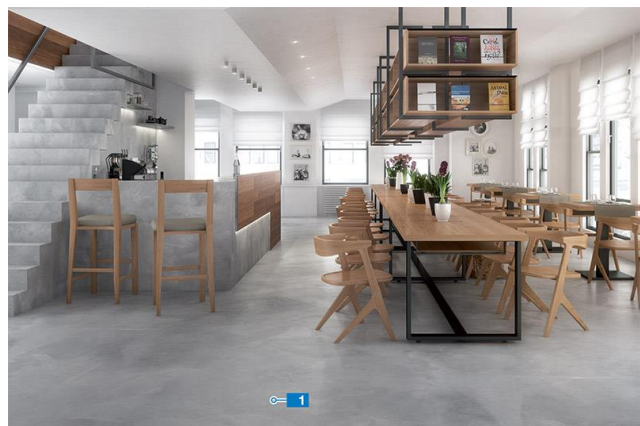
**Mapefloor Finish 58 W** – matt transparent or

**Mapefloor Finish 53 W/L** – glossy transparent or

**Mapefloor Finish 54 W/S** – satin transparent

Two-component UV-resistant and durable polyurethane top coats. Apply 2 layers using a felted wiper or short hair roller(mohair) in a crisscross pattern.

Always prime the surface with 1 layer of **Ultratop Base Coat**, one-component acrylic primer, before the selected top coat.



## OTHER INFORMATION

- + Technical Data Sheet (TDS) and Material Safety Data Sheets (MSDS) are available at [www.mapei.com](http://www.mapei.com)
- + Work Descriptions
- + Operation and maintenance manual
- + Labor Inspection Brochure # 377 on thermosetting