

AREAS OF APPLICATION

- + Showrooms
- + Hotels and restaurants
- + Museums and galleries
- + Spas and wellness centres
- + Office locations and public areas
- + Apartments and living spaces

SYSTEM DESCRIPTION

This system consists of products that give a seamless coating suitable for wall areas.

The coating is applied in a total thickness of approx. 1-2 mm, consisting of a structure with a primer, an UV-resistant cement based basecoat and a polyurethane or acrylic finish. The system gives a durable surface and is available in a wide variety of colors.

The products used contain no solvents and are practically odourless during application. The system ensures a quick installation, and the final product holds no risk to the health of the user.

PROPERTIES

The system is well suited for substrates with exacting requirements for surfaces with:

- + Highly attractive patterns and finishes
- + Hygienic, easy to clean and easy to maintain
- + Very good wear resistance
- + Very good UV-resistance
- + Possible with the same design on floors

SYSTEM STRUCTURE

Substrate / Pre-treatment

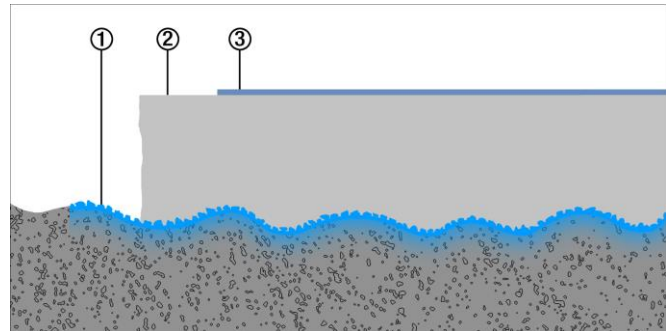
The substrate should be pre-treated by grinding and should be dry, clean and free of dust, oil, grease etc.

The system is well suited for use on concrete and other cement based substrates. For other substrates, an evaluation of suitability should be done.

1 Priming

PRIMER GRIP WHITE – filled standard primer for non-absorbent substrates

PRIMER LT – primer for absorbent substrates (1:2 with water)



2 Basecoat

Ultratop Loft F – rough structure

Ultratop Loft W – fine structure

Cement based mortar mixed with water or selected color pigment **Ultratop Easycolor**. Apply with a flat trowel in a minimum of 2 layers. Before applying the second layer, grind and prime the surface using **Primer LT** (1:1 with water). The surface should be grinded as well before applying topcoat.

3 Top coats – high loads

Mapefloor Finish 58 W – matt transparent or

Mapefloor Finish 53 W/L – glossy transparent or

Mapefloor Finish 54 W/S – semi matt transparent

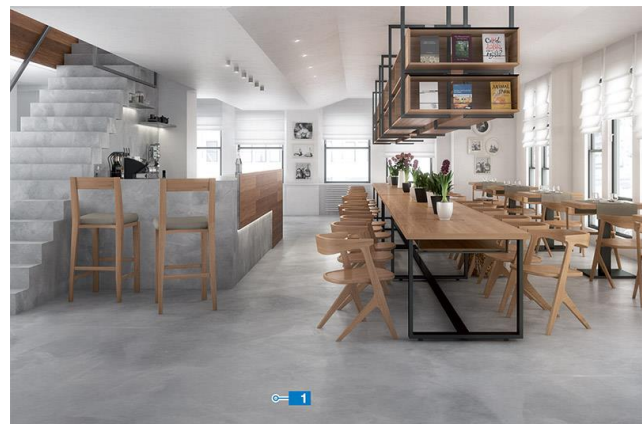
Two-component UV-resistant and durable polyurethane top coats. Apply 2 layers using a felted wiper or short hair roller in a crisscross pattern. Always prime the surface with 1 layer of **Ultratop Base Coat**, one-component acrylic primer, before applying the top coat .

Or

3 Top coat – low loads

Mapefloor Finish 630 – semi-glossy transparent.

Two-component acrylic based finish. Apply 1-2 layers using a roller or a rag.



OTHER USEFUL INFORMATION

+ The Technical Data Sheet (TDS) and Safety Data Sheet (SDS) can be found at www.mapei.no

+ Working descriptions