

The Mapelastic Turbo system

WATERPROOFING PRODUCTS

January

10
FEBRUARY
8:00 AM
5 °C

March

April

May

June

July

August

September

October

November

December

The **RAPID** waterproofer
for **ALL CLIMATES**



Mapelastic Turbo



Reference
standard
Product
type and
classification

[18kg KIT=7,5m²]

[136kg KIT=15m²]

Mapei technology to identify
those products that allow
interventions to be carried out
rapidly

The Mapei Research and Development laboratories have developed a special formula that allows **Mapelastic Turbo** to be applied at low temperatures on substrates that are not perfectly dry, as long as they are well cured.

Mapelastic Turbo is a two-component cementitious waterproofing product for the following areas of use:

- balconies, terraces, flat roofs, swimming-pools etc. before bonding coating;
- balconies and terraces by overlaying existing floor coverings prior to bonding new floor coverings.

When the two components (A+B) are mixed they form a paste with good workability that makes application easier.

Mapelastic Turbo overcomes the problems normally caused by seasonal conditions and bad weather.



January

10
FEBRUARY
8:00 AM
5 °C

March

April

May

June

July

August

September

October

November

December

The **RAPID** waterproofer for **ALL CLIMATES**

ADVANTAGES of Mapelastic Turbo

+ **FLUIDITY**

- excellent workability in all seasons
- high daily productivity
- easy to apply

+ **SPEED**

- short rain-dry time
- eliminates the risk of accidental leaching
- the second coat may be applied just a few hours after the first coat
- tiles may be bonded after 4 or 24 hours depending on surrounding conditions

+ **APPLICATION**

- also suitable for substrates not completely dry as long as they are well cured
- **Mapenet 150** or **Mapetex Sel** applied between the two coats

A**Mapeband T**

"T" profile for waterproofing fillets
and check joints

B**Mapeband TPE**

TPE tape bonded with **Adesilex PG4**
for sealing structural joints

C**Mapeband**

Rubber-backed tape for waterproofing
check joints

D**Mapeband Cross**

"X" profile for waterproofing check joints

E**Drain Vertical / Drain Lateral**

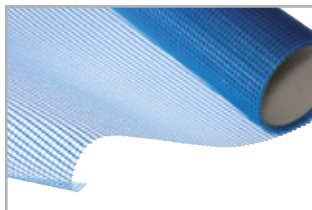
Kit for waterproofing floor drains

F**Mapenet 150 / Mapetex Sel**

Reinforcement for **Mapelastic**
waterproofing systems

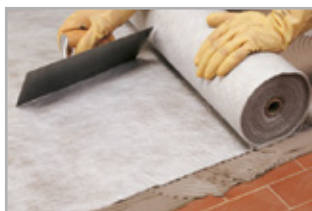
SYSTEM ACCESSORIES

REINFORCEMENT



Mapenet 150

Alkali-resistant glass fibre mesh (in compliance with ETAG 004 guidelines) for reinforcing protective waterproofing systems



Mapetex Sel

Macro-perforated, non-woven polypropylene fabric for reinforcing waterproof membranes



DRAINS



Drain Vertical Drain Lateral

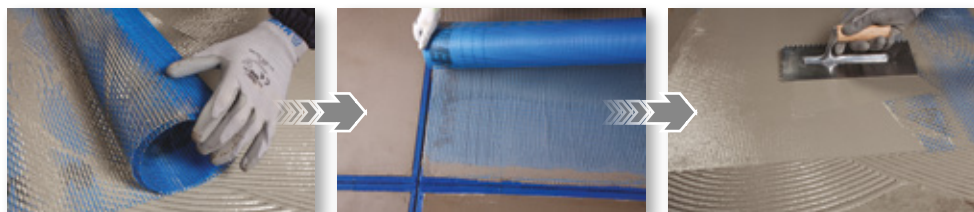
Complete kit to install floor drains. Ideal for draining off water from terraces, balconies, bathrooms, boiler rooms, wash-rooms, etc.



Drain Front

TPE angular pipe union for terraces and balconies





SYSTEM ACCESSORIES

TAPE



Mapeband

Alkali-resistant rubber-backed tape with felt for cementitious waterproofing systems and liquid membranes



Mapeband Easy

Rubber tape sandwiched between two layers of non-woven fabric to form elastic joints in waterproofing systems



Mapeband TPE

TPE tape for flexible sealing and waterproofing of expansion joints and cracks subject to movement



Mapeband SA

Self-adhesive butyl tape with alkali-resistant, non-woven fabric backing for elastic waterproofing systems





WATERPROOFING NEW STRUCTURES



Carry out a thorough check of the condition of the substrates

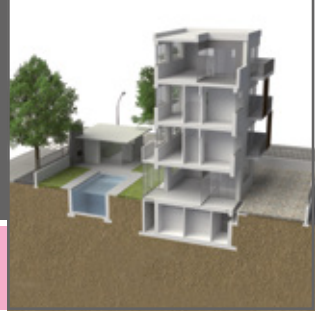


Bond **Mapeband TPE** with **Adesilex PG4** adhesive on structural joints and broadcast the surface with quartz sand. The ends must be bonded together with **Adesilex LP** or hot-welded



When the first coat is dry apply the second coat of **Mapelastic Turbo**





3.

Any cracks present in the structure must be filled and sealed with **Eporip** and broadcast with quartz sand

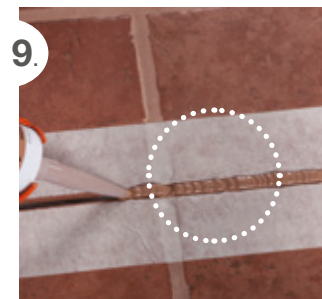
Apply **Mapeband** tape along the check joints and the fillets between floors and walls. The ends must be bonded together with **Adesilex LP**



6.

Use a suitable kit from the **Drain** line to make any floor or wall drains required

Waterproof the area by applying the first coat of **Mapelastic Turbo** and apply **Mapenet 150** or **Mapetex Sel** over the waterproofing product



9.

Apply the adhesive required to bond the floor covering

Grout the gaps and seal all the joints and fillets

For more information on the characteristics of the products mentioned above and how to use them correctly refer to the relative Technical Data Sheet for each product, available on the company website www.mapei.com.

WATERPROOFING EXISTING STRUCTURES

1.

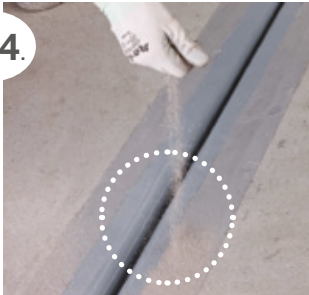


Check that the existing coating material is well bonded. Prepare all surfaces by sanding or cleaning them thoroughly with caustic soda; rinse the surfaces

2.

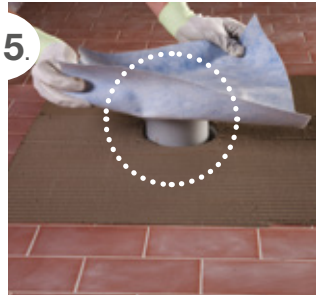


4.



Bond **Mapeband TPE** with **Adesilex PG4** adhesive on structural joints and broadcast the surface with quartz sand. The ends must be bonded together with **Adesilex LP** or hot-welded

5.

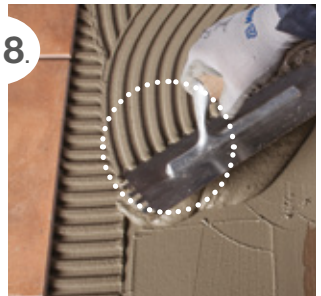


7.



When the first coat is dry, apply the second coat of **Mapelastix Turbo**

8.





Level off the surfaces and form any slope required with **Adesilex P4** or **Planitop Fast 330**

Apply **Mapeband** tape along the control joints and the fillets between floors and walls. The ends must be bonded together with **Adesilex LP**



Use a suitable kit from the **Drain** range to make any floor or wall drains required

Waterproof the area by applying a first coat of **Mapelastico Turbo** and apply **Mapenet 150** or **Mapetex Sel** over the waterproofing product



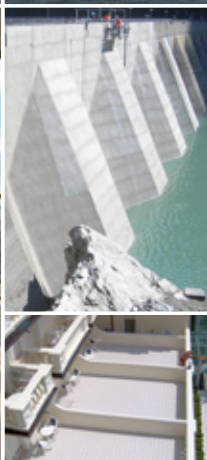
Apply the adhesive required to bond the floor covering

Grout the gaps and seal all the joints and fillets

For more information on the characteristics of the products mentioned above and how to use them correctly refer to the relative Technical Data Sheet for each product, available on the company website www.mapei.com.

MAPELASTIC RANGE PRODUCTS





HEAD OFFICE

MAPEI SpA

Via Cafiero, 22 - 20158 Milan

Tel. +39-02-37673.1

Fax +39-02-37673.214

Internet: www.mapei.com

E-mail: mapei@mapei.it

