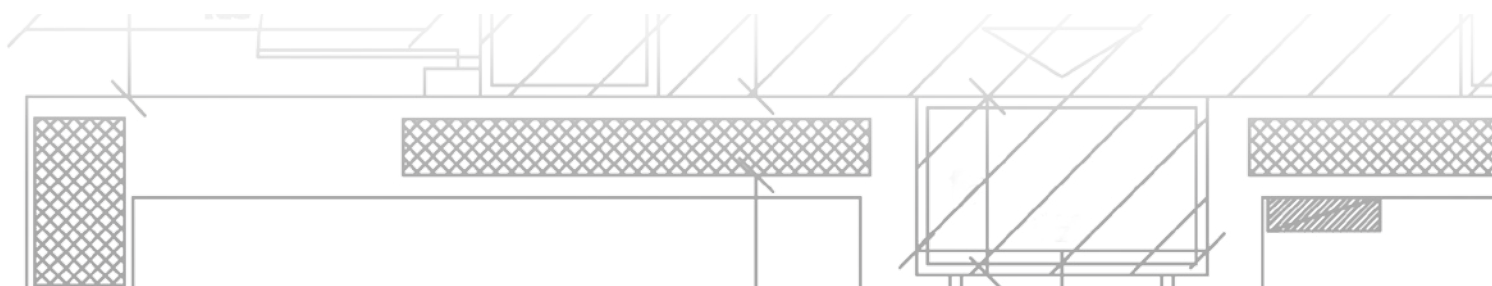




Technical Notebook

LAYING STONE MATERIALS

**Materials and systems to lay natural
and engineered stone correctly**



Technical Notebook

LAYING STONE MATERIALS

**Materials and systems to lay natural
and engineered stone correctly**

Front cover image:

THE VICEROY PALM JUMEIRAH, DUBAI - UAE

page	04	1.	INTRODUCTION
page	04	2.	TYPICAL PROBLEMS WHEN LAYING STONE MATERIALS
page	05	2.1	DIMENSIONAL INSTABILITY AND WARPING
page	05	2.1.1	DIMENSIONAL STABILITY TEST: CLASSIFICATION OF STONE MATERIALS
page	08	2.2	STAINING AND EFFLORESCENCE
page	09	3.	PREPARATION OF THE SUBSTRATE
page	12	4.	THE BEST LAYING SOLUTIONS ACCORDING TO MATERIAL CLASSIFICATION
page	12	4.1	CHOOSING THE ADHESIVE SYSTEM
page	12	4.1.1	CLASS A NATURAL AND ENGINEERED CEMENT-BASED MATERIAL NOT SENSITIVE TO THE FORMATION OF STAINS AND EFFLORESCENCE
page	13	4.1.2	CLASS A ENGINEERED RESIN-BASED MATERIAL, NOT SENSITIVE TO THE FORMATION OF STAINS (FOR INTERNAL APPLICATIONS)
page	15	4.1.3	CLASS A NATURAL, ENGINEERED CEMENT-BASED AND ENGINEERED RESIN-BASED MATERIAL (FOR INTERNAL APPLICATIONS) SENSITIVE TO THE FORMATION OF STAINS AND EFFLORESCENCE
page	16	4.1.4	CLASS B* STONE MATERIALS
page	17	4.1.5	CLASS C** STONE MATERIALS
page	18	4.2	CHOOSING THE RIGHT GROUT AND SEALANT FOR THE JOINTS
page	18	4.2.1	PRODUCTS FOR GROUTING JOINTS
page	18	4.2.2	PRODUCTS FOR SEALING EXPANSION JOINTS

LAYING STONE MATERIALS

Materials and systems to lay natural
and engineered stone correctly

page 19 5. SPECIAL LAYING CASES

page 19 5.1 LAYING DECORATIVE ELEMENTS IN CEMENT-BASED ENGINEERED MATERIAL

page 25 6. SPECIFICATIONS

page 25 6.1 INSTALLATION OF STONE AND ENGINEERED STONE ON INTERNAL SUBSTRATES

page 26 6.1.1 INSTALLATION OF DIMENSIONALLY-STABLE STONE OR ENGINEERED STONE (MAPEI CLASS A) NOT SENSITIVE TO STAINING

page 26 6.1.1.1 INSTALLATION OF NATURAL STONE ON NON-HEATING CEMENTITIOUS SCREEDS, CEMENTITIOUS RENDER OR WELL ANCHORED PLASTERBOARD WITHOUT A GYPSUM SKIMMING LAYER

page 28 6.1.1.2 RAPID INSTALLATION OF NATURAL STONE ON NON-HEATING CEMENTITIOUS SCREEDS, CEMENTITIOUS RENDER OR WELL ANCHORED PLASTERBOARD WITHOUT A GYPSUM SKIMMING LAYER

page 30 6.1.1.3 INSTALLATION OF NATURAL STONE OR ENGINEERED STONE MATERIAL ON HEATING CEMENTITIOUS SCREEDS, WATERPROOF MEMBRANES OR OLD CERAMIC OR STONE FLOORING OR COATING

page 31 6.1.1.4 RAPID INSTALLATION OF NATURAL STONE OR ENGINEERED STONE MATERIAL ON HEATING OR NON-HEATING CEMENTITIOUS SCREEDS, WATERPROOFING MEMBRANES OR OLD CERAMIC, EXISTING FLOORING OR COATING

page 33 6.1.1.5 INSTALLATION OF NATURAL STONE ON ANHYDRITE SCREEDS, GYPSUM-BASED RENDER, WELL ANCHORED PLASTERBOARD WITH A GYPSUM SKIMMING LAYER OR CELLULAR CONCRETE

page 35 6.1.1.6 RAPID INSTALLATION OF NATURAL STONE ON ANHYDRITE SCREEDS, GYPSUM-BASED RENDER, WELL ANCHORED PLASTERBOARD WITH A GYPSUM SKIMMING LAYER

page 37 6.1.1.7 INSTALLATION OF NATURAL STONE OR ENGINEERED STONE MATERIAL ON WOODEN SUBSTRATES, EXISTING BONDED WOODEN COVERINGS OR RESILIENTS

page	38	6.1.1.8	INSTALLATION OF NATURAL STONE OR ENGINEERED STONE MATERIAL ON METAL SUBSTRATES (KERALASTIC/ULTRABOND ECO PU 2K)
page	40	6.2	INSTALLATION OF STONE AND CEMENT-BASED ENGINEERED STONE ON EXTERNAL SUBSTRATES
page	40	6.2.1	INSTALLATION OF DIMENSIONALLY-STABLE STONE OR CEMENT-BASED ENGINEERED STONE (MAPEI CLASS A) NOT SENSITIVE TO STAINING
page	41	6.2.1.1	INSTALLATION ON CEMENTITIOUS SUBSTRATES
page	43	6.2.1.2	RAPID INSTALLATION ON CEMENTITIOUS SUBSTRATES OR WATERPROOFING SYSTEMS
page	44	6.2.1.3	INSTALLATION ON METAL SUBSTRATES
page	46	6.3	LAYING STONE MATERIALS WITH RAPID SYSTEMS
page	46	6.3.1	INSTALLATION OF STONE OR CEMENT-BASED ENGINEERED STONE MODERATELY STABLE TO WATER (MAPEI CLASS B) OR STABLE TO WATER (MAPEI CLASS A) AND SENSITIVE TO STAINING
page	47	6.3.1.1	INSTALLATION ON CEMENTITIOUS SUBSTRATES OR WATERPROOFING SYSTEMS
page	49	6.4	LAYING STONE MATERIALS WITH REACTIVE SYSTEMS
page	49	6.4.1	INSTALLATION ON METAL SUBSTRATES
page	50	6.4.2	INSTALLATION OF STONE OR ENGINEERED STONE UNSTABLE TO WATER (MAPEI CLASS C)
page	51	6.4.2.1	INSTALLATION ON ALL TYPES OF SUBSTRATE (EXCEPT WATERPROOFING MEMBRANES)

page	53	7.	REFERENCES
-------------	-----------	-----------	-------------------

LAYING STONE MATERIALS

Materials and systems to lay natural and engineered stone correctly

1. INTRODUCTION

The aim of this Technical Notebook is to offer useful guidelines to help lay natural and engineered stone materials correctly with long-lasting results using technologically advanced products and systems developed by MAPEI, thanks to the company's experience gained over the years, as well as constant technical support from the company's Research and Development laboratories.

To solve typical problems encountered when laying stone materials, MAPEI offers a complete range of products including screeds, smoothing and levelling compounds, adhesives, grouting mortars and special-purpose sealants.

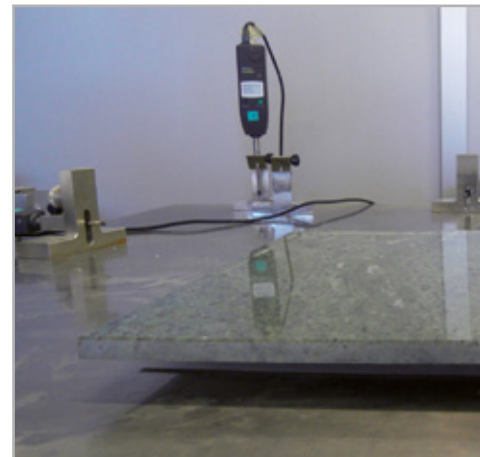
This Technical Notebook also illustrates examples of high-quality, long-lasting laying methods for marble, granite, porphyry and agglomerates for various scopes and intended uses.

2. TYPICAL PROBLEMS WHEN LAYING STONE MATERIALS

Over the years, the market has introduced thinner natural stone slabs compared with conventional thicker slabs, and artificial slabs produced using natural stone mixed with different types of binders. This has resulted in new problems being encountered when laying such products.

If thin tiles are used, it may happen that materials warp or expand due to the presence of damp in the substrate and installation materials, or due to the effect of temperature variations. Also, when water is present, stains or unsightly efflorescence may form on certain types of stone.

These two problems are not necessarily connected and, therefore, must be approached separately.



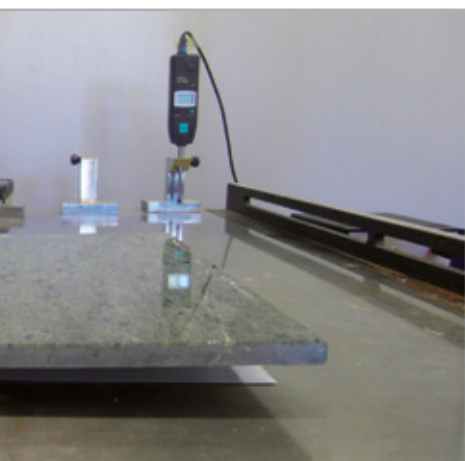


Fig. 2.1 - Warping of a stone slab which is sensible to humidity

2.1 DIMENSIONAL INSTABILITY AND WARPING

How sensitive certain types of stone are to warping in the presence of water or temperature variations is a determining factor when choosing which type of adhesive to use for laying. If the wrong adhesive is used, the functionality of the covered surface may be compromised (Fig. 2.1). A material's tendency to warp is common for certain types of green marble (such as Alpine Green), certain types of slate and Pietra Serena and certain engineered materials produced using polyester resin (more sensible to thermic variations), and depends highly on the shape, dimensions and thickness of the slabs. This instability, therefore, is influenced by both the nature of the stone and its geometric characteristics, which makes it practically impossible to predict the material's behaviour when laying and when in service without carrying out in-depth testing on the material before use.

2.1.1 DIMENSIONAL STABILITY TEST: CLASSIFICATION OF STONE MATERIALS

MAPEI IS THE ONLY COMPANY IN THE WORLD to have designed and developed an analytical classification system for stone materials according to their sensitivity to water (Table 1). The test method used to develop the classification system is a test rig with a metal support bed and high-precision digital measuring devices, connected to a terminal which carries out a continuous registration of any measurement. **In practice, the test is a real simulation of the laying of a slab where any movements at the edges of the slab are continuously measured by means of electronic sensors. The slab is positioned upside-down and is supported on three of its four sides, and is then wetted with a piece of saturated felt on the back face of the slab.**

The test is carried out as follows:

1. The slab is overturned and supported on three of its four edges on a metal board. A piece of felt saturated with water is placed on the back face (Fig. 2.2) to simulate the damp of the laying bed (sand and cement mortar or conventional adhesive).

LAYING STONE MATERIALS

Materials and systems to lay natural and engineered stone correctly

2. The digital sensors, positioned in various points on the slab to record deformations in all directions at the edges of the slab, continuously transmit all the movements in the slab due to the damp felt to the terminal.

3. According to the entity of the deformations (δ), measured 6 hours after applying the damp felt, the stone is divided into three classes:

- a) **Class A:** $\delta < 0.3$ mm
- b) **Class B:** $0.3 < \delta < 0.6$ mm
- c) **Class C:** $\delta > 0.6$ mm

4. Materials in the class A group are considered stable and the choice of which adhesive used does not depend on its tendency to warp. Other factors will have to be considered, such as its sensitivity to staining or the formation of efflorescence, the size of the slabs, the type of substrate and the service conditions of the coating.

5. For those materials which are not in class A after simulating their bonding with a damp felt, the test described previously must be repeated by replacing the damp felt with a layer of quick-hardening cementitious adhesive (class F in compliance with EN 12004) (Fig. 2.3).

6. According to the entity of the deformation (δ) measured 6 hours after applying the adhesive, the material is classified as follows:

- a) **Class B*:** $\delta < 0.3$ mm – materials become class A after simulating bonding with rapid adhesive.
- b) **Class C**:** $\delta > 0.3$ mm – materials are still classified as class B or C, even after simulating bonding with rapid adhesive.

According to the results of the dimensional stability test, combined with other particular characteristics or foreseen service conditions, it is possible to define the most suitable laying system to guarantee a durable coating.

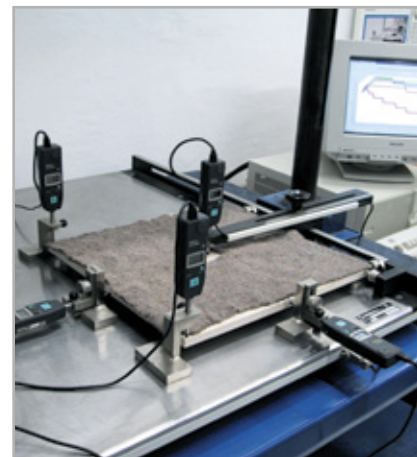


Fig. 2.2 - Dimensional stability test by simulation with damp felt



Fig. 2.3 - Dimensional stability test by bonding with quick-hardening adhesive

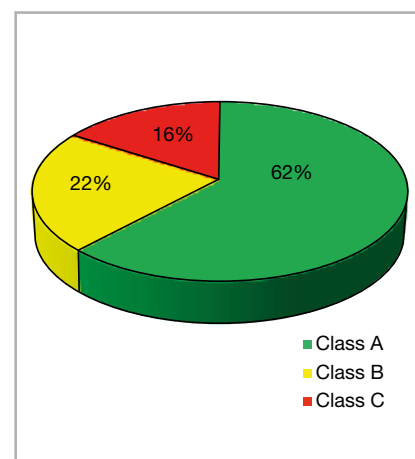
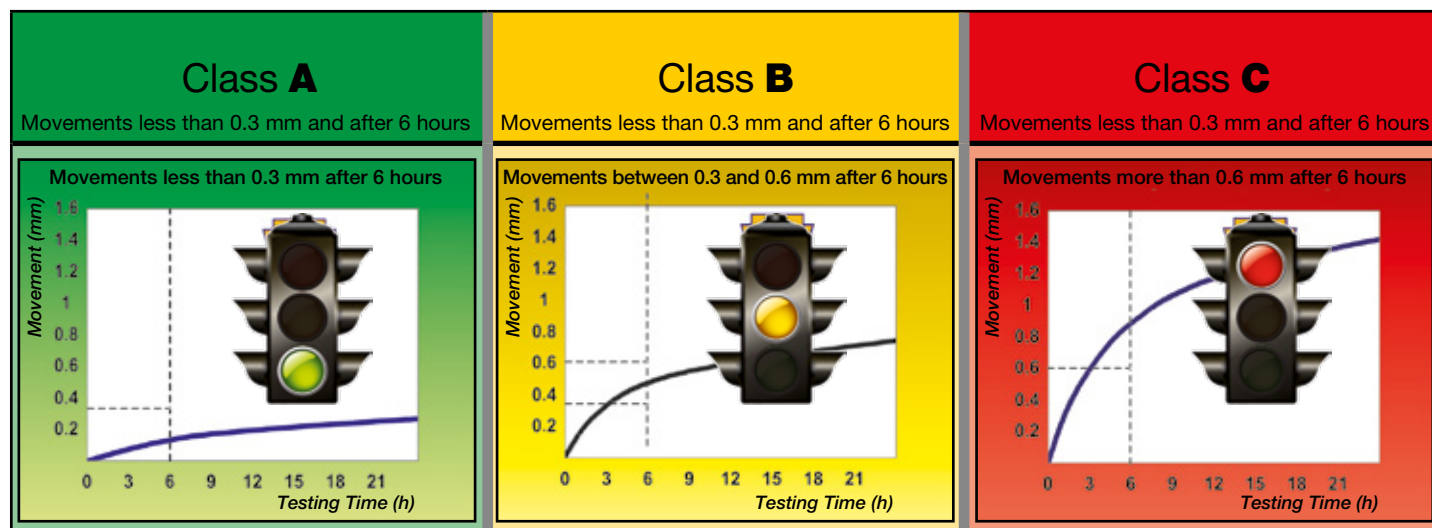


Fig. 2.4 - Spread of materials tested for dimensional stability in MAPEI's research laboratories

GENERAL OUTLINE OF THE MOVEMENTS OF MATERIALS DURING DIMENSIONAL STABILITY TESTING



EXAMPLES OF MATERIALS TESTED IN MAPEI'S RESEARCH LABORATORIES (MAPEI CLASSIFICATION):

Class A		Class B*		Class C**	
Granite:	Impala Blue Black Red Green Aosta Green	Granite:	Byzantine Green	Granite:	Grey-Green Peruvian Porphyry Predazzo Red Speranza Green Purple
Various:	Pietra Lara Piedra del sol Volvic Stone (France) Mexican Stone (pink) Brazilian Pink Quarzite Crystalline Alabaster Onyx	Various:	Sardinian Red Ignimbrite Brazilian Ardesia Carniglia Stone	Various:	Cantera Stone Matraia Stone Pietra Serena Slate Green Jade
Marble:	Carrara White Rose African Red Botticino Orobis Arabesque White Brazilian Classic White Venetian Yellow Motrico Grey Jacaranda Jura blaugelb gemischt Marquina Black Shiny Paradise Portuguese Rose Laguna Red Verona Red Valmalenco Serpentine Veined Statuario S. Pietro Travertin	Marble:	Amethyst Italian Green Aver Green Saint Denise Green Rio Branco	Marble:	Pearl White Alpine Green Veined Alpine Green Issoire Green Mergozzo Green Guatemala Green
Engineered:	White Bianco Carrara (cement) Botticino (cement) Breccia Aurora (resin) Levanto Red (resin)	Engineered:	Diorite (cement) Zandobbio White (cement) Amarelo (resin) Onyxed Breccia (resin)	Engineered:	Carnico Grey (cement) Ruby Red (cement) Copper Red (resin) Portoro (resin)

Tab. 1 - The classifications in the table above correspond to MAPEI's test results carried out on samples of materials and must be considered, therefore, as merely an indication and must not be considered as representative of all types of stone material from the same mineral group.

* Materials which are in class B and C after simulation of bonding with damp felt and come back to class A ($\delta < 0.3$ mm) after repetition of dimensional stability testing with rapid adhesives.

** Materials which are in class B and C after simulation of bonding with damp felt and remain in class B ($0.3 < \delta < 0.6$ mm) or C ($\delta > 0.6$ mm) after repetition of dimensional stability testing with rapid adhesives.

LAYING STONE MATERIALS

Materials and systems to lay natural and engineered stone correctly

2.2 STAINING AND EFFLORESCENCE

Staining and /or the formation of efflorescence on the surface of stone may occur when there is water present and may be due to various factors:

- stone laid conventionally on a bed of mortar or with a normal-setting adhesive;
- material laid on a substrate which is not sufficiently isolated from rising damp from the ground;
- material laid on a substrate which is not completely dry with a high level of humidity while laying.

The formation of efflorescence may occur on all types of stone, although only certain types of stone are prone to staining, such as marble, quartz, granite and light-coloured engineered stone (such as Carrara marble, Thassos, pink Quarzite, etc.).

The problem may be traced to the presence of substances in the stone itself which dissolve in alkali water rising from the substrate or laying bed (in the case of soluble salts) or which react with the water (mainly in the case of ferrous minerals).

In the first case, the soluble substances are transported towards the surface of the material by the water on the back face of the slabs and form widespread staining or efflorescence. In the case of reactive substances, the combined action of the water, oxygen and light cause them to oxidise and cause unsightly stains on the coating. The use of quick-hardening cementitious adhesives, which reduce the period of time in which the stone is in contact with the water and stops it rising to the surface of the stone, or of reactive adhesives, may avoid such defects showing up. Staining and efflorescence may show up, however, if the substrate has not been correctly prepared.

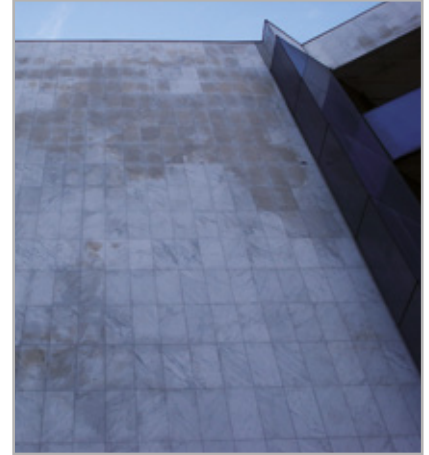


Fig. 2.5 - Example of stains caused by pyrite on white Carrara marble



Fig. 2.6 - Example of stains on a granite floor



Fig. 2.7 - Example of efflorescence caused by rising damp from the substrate



Fig. 3.1 - Mixing MAPECEM PRONTO screed



Fig. 3.2



Fig. 3.3 - Carrying out a MAPECEM PRONTO screed

3. PREPARATION OF THE SUBSTRATE

Substrates must be prepared according to specific requirements to make them suitable for laying stone coatings, which vary according to the final use of the floor. The most significant characteristics of the substrate which must be assessed before laying are as follows:

- **thickness:** the most suitable thickness depends on the type of substrate. For materials sensitive to water and, therefore, prone to staining and warping, the substrate must always be checked to make sure there is no rising damp. Make sure that screeds have a suitable vapour barrier or, with new screeds, form a layer at least 4 cm thick which is isolated from the substrate with polyethylene sheets to block rising damp.
- **mechanical strength and compactness:** mechanical strength requirements must be assessed according to service conditions and final use. A value of 20 MPa is generally considered sufficient for substrates for residential applications, which should be increased to around 30 MPa in commercial and industrial environments. For render on façades, check strength by tear tests. The value must be at least 1 MPa.
- **curing:** before laying the material, make sure the substrate is well cured. The curing time for cementitious substrates is around 7-10 days per centimetre of thickness. During this period, screeds and render are subject to hygrometric shrinkage which may form cracks. If coatings are laid without respecting curing times, the cracks may be transferred to the coating with the risk of detachment.

LAYING STONE MATERIALS

Materials and systems to lay natural and engineered stone correctly

Curing times may be reduced if required by using quick or rapid-drying, pre-blended mortar or binders such as:

- **TOPCEM**, special hydraulic binder for normal setting, fast drying (4 days) and controlled shrinkage screeds. Topcem is certified by GEV Institut as a product with very low emission levels of volatile organic compounds (EMICODE EC1 R PLUS).

- **TOPCEM PRONTO**, ready-to-use, normal setting, quick-drying mortar with high thermal conductivity, classified CT-C30-F6-A1_{fl} according to EN 13813 standard, and certified by GEV Institut as a product with very low emission levels of volatile organic compounds (EMICODE EC1 R PLUS).

- **MAPECEM**, special fast setting and drying (24 hours) hydraulic binder for shrinkage-compensated screeds.

- **MAPECEM PRONTO**, pre-blended, ready-to-use, quick-setting and drying (24 hours), controlled-shrinkage mortar for screeds, class CT-C60-F10-A1_{fl} according to EN 13813.

- **drying**: especially when laying materials sensitive to water, or to avoid the risk of efflorescence forming on the surface, it is extremely important to check that the substrate is dry; the level of residual humidity can be measured using a carbide hygrometer;

- **cleaning**: surfaces on which materials are to be laid must be sufficiently clean and free of dust, grease, oil, paint, loose portions and any other substance which could compromise the bond;

- **no cracks**: all cracks must be sealed before laying coatings with a suitable product, such as **EPORIP**, **EPOJET** or **EPORIP TURBO**. As an alternative, an anti-fracture layer may be applied on cracked substrates, such as **MAPETEX** (Progress 1 page 18);



Fig. 3.4 - Using a straight-edge on the screed



Fig. 3.5 - Floating the screed's surface



Fig. 3.6 - Applying a primer as bonding promoter



Fig. 3.7 - Levelling a cementitious screed with ULTRAPLAN



Fig. 3.8 - Evening out a concrete wall with NIVOPLAN+PLANICRETE



Fig. 3.9 - Evening out a wall with PLANITOP FAST 330

- **flatness**: if the laying surface is particularly uneven, it may be levelled off using a suitable product such as:

FOR INTERNAL SURFACES

- **NIVORAPID**, ultra-fast setting, thixotropic, cementitious levelling compound for horizontal and vertical surfaces, from 1 to 20 mm thick layer. Class CT-C40-F10-A2_{fl} according to EN 13813 standard, certified by GEV Institut as a product with a very low emission level of volatile organic compounds (EMICODE EC1 R PLUS). When mixed with **LATEX PLUS** instead of water, it forms a highly flexible smoothing and levelling compound with excellent bond strength even on metal surfaces and existing floors in rubber, PVC, chipboard, parquet, linoleum, etc.;

- **ULTRAPLAN/ULTRAPLAN MAXI**, ultra-fast drying self-levelling compound for thicknesses from 3 to 40 mm, classes CT-C30-F7-A2_{fl}-s1 and CT-C35-F7-A2_{fl}-s1 according to EN 13813 standard, certified by GEV Institut as products with a very low emission level of volatile organic compounds (EMICODE EC1 R PLUS).

FOR EXTERNAL APPLICATIONS

- **ADESILEX P4**, high performance, rapid-setting, full contact, cementitious adhesive for ceramic tile and stone material installations; smoothing compound for interiors and exteriors; mortar for brick and concrete block walls, class C2F according to EN 12004, certified by GEV Institut as a product with a very low emission level of volatile organic compounds (EMICODE EC1 R PLUS);

- **PLANITOP FAST 330**, quick-setting, fibrereinforced cementitious mortar for internal and external floors and walls, applied at a thickness from 3 to 30 mm to smooth out irregularities, certified by GEV Institut as products with a very low emission level of volatile organic compounds (EMICODE EC1 R);

- **NIVOPLAN**, indoor and outdoor levelling mortar for walls and ceilings for

LAYING STONE MATERIALS

Materials and systems to lay natural and engineered stone correctly

thicknesses from 2 to 20 mm. When mixed with 1 or 2 kg of **PLANICRETE** per bag, it improves its consistency when it is applied in thin layers.

For more detailed information on the preparation of a new screed, please consult the Technical Notebook "Installation of heated screeds and substrates for laying floors".

4. THE BEST LAYING SOLUTIONS ACCORDING TO MATERIAL CLASSIFICATION

4.1 CHOOSING THE ADHESIVE SYSTEM

4.1.1 **CLASS A** NATURAL AND ENGINEERED CEMENT-BASED MATERIAL NOT SENSITIVE TO THE FORMATION OF STAINS AND EFFLORESCENCE

When laying this class of materials, the adhesive must be chosen according to the size of the slabs, the type of substrate and the service conditions of the coating. We recommend the following products:

- **KERAFLEX**, high-performance cementitious adhesive with no vertical slip and extended open time for ceramic tiles and stone material, class C2TE according to EN 12004. Especially suitable for laying on internal floors and walls and on external surfaces not subject to deformation or high stresses.

The adhesive is certified by GEV Institut as a product with very low emission level of volatile organic compounds (EMICODE EC1 R PLUS).

- **KERAFLEX MAXI S1/KERAFLEX MAXI S1 ZERO** special high performance, deformable cementitious adhesives, available in white (**KERAFLEX MAXI S1**) or grey (**KERAFLEX MAXI S1 ZERO**) with extended open time and no vertical slip, for ceramic tiles and stone material, with Low Dust technology, class C2TE S1 according to EN 12004. The adhesives



Fig. 4.1 - Example of installation of stone material on floor with KERAFLEX MAXI S1 - Spa Rác & Hotel, Budapest - Hungary



Fig. 4.2 - Example of installation of stone material with KERAFLEX MAXI S1 - "Loop 5" Shopping Centre - Weiterstadt - Germany



Fig. 4.3 - Example of installation of natural stone on façade - "La Llotja" Congress Centre, Lleida - Spain

are certified by GEV Institut as products with very low emission level of volatile organic compounds (EMICODE EC1 R PLUS). The increased thickness of adhesive which may be applied makes it particularly suitable for laying on uneven surfaces or for laying tiles with an uneven back face (Progress 2 page 18).

- **ULTRALITE S1** one-component, high-performance, flexible, lightweight, cementitious adhesive with no vertical slip and long open time, Low Dust technology and extremely high yield. Easy to apply by trowel with excellent wetting properties, stone and thin porcelain tiles, class C2TE S1 according to EN 12004. The adhesive is certified by GEV Institut as a product with very low emission level of volatile organic compounds (EMICODE EC1 R PLUS). This product guarantees better buttering of tiles than conventional adhesives, which makes it particularly suitable for use in environments subject to intense traffic or, in general, when a continuous bed of adhesive is required.

- **KERABOND + ISOLASTIC**, highly deformable adhesive system, particularly suitable for laying on external surfaces and façades, class C2E S2 according to EN 12004 (Progress 3 page 19).



4.1.2 CLASS A ENGINEERED RESIN-BASED MATERIAL, NOT SENSITIVE TO THE FORMATION OF STAINS (FOR INTERNAL APPLICATIONS)

For this type of stone material, which is only suitable for laying on internal surfaces, we recommend the use of the following adhesives:

- **KERAFLEX**, high-performance cementitious adhesive with no vertical slip and extended open time for ceramic tiles and stone material, class C2TE according to EN 12004. Especially suitable for laying on internal floors and walls and on external surfaces not subject to deformation or high stresses.

The adhesive is certified by GEV Institut as a product with very low emission level of volatile organic compounds (EMICODE EC1 R PLUS).

LAYING STONE MATERIALS

Materials and systems to lay natural and engineered stone correctly

- **KERAFLEX MAXI S1/KERAFLEX MAXI S1 ZERO** special high-performance, deformable cementitious adhesives, available in white (**KERAFLEX MAXI S1**) or grey (**KERAFLEX MAXI S1 ZERO**) with extended open time and no vertical slip, for ceramic tiles and stone material, with Low Dust technology, class C2TE S1 according to EN 12004. The adhesive is certified by GEV Institut as a product with very low emission level of volatile organic compounds (EMICODE EC1 R PLUS). The increased thickness of adhesive which may be applied makes it particularly suitable for laying on uneven surfaces or for laying tiles with an uneven back face (Progress 2 page 18).

- **ULTRALITE S1** one-component, high-performance, flexible, lightweight, cementitious adhesive with no vertical slip and long open time, Low Dust technology and extremely high yield. Easy to apply by trowel with excellent wetting properties, stone and thin porcelain tiles, class C2TE S1 according to EN 12004. The adhesive is certified by GEV Institut as a product with very low emission level of volatile organic compounds (EMICODE EC1 R PLUS). This product guarantees better buttering of tiles than conventional adhesives, which makes it particularly suitable for use in environments subject to intense traffic or, in general, when a continuous bed of adhesive is required.

When choosing which laying system to use for these materials, the final use of the coating must always be taken into consideration. Some of these products are characterised by a high coefficient of thermal expansion which, under certain laying conditions such as surfaces exposed to direct sunlight, may generate high strains due to the coating's tendency to expand being impeded. In such cases, to avoid the sides of the tiles and slabs pressing against each other and lifting due to the effect of expansion, they must be laid with wide joints between them and low-pitch flexible expansion joints must be formed using a highly flexible adhesive, such as:

- **ULTRABOND ECO PU 2K**, two-component, solvent-free, high-

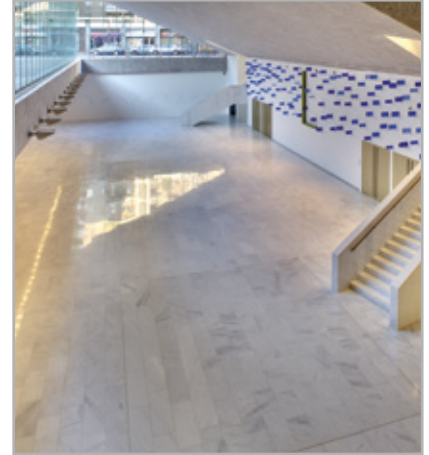


Fig. 4.4 - Example of installation of white Carrara marble with GRANIRAPID white – University Bocconi, Milan – Italy



Fig. 4.5 - Example of installation of granite with GRANIRAPID – Bloor Street, Toronto – Canada



Fig. 4.6 - Example of installation of natural stone with GRANIRAPID – Train station of Marseille – France

performance polyurethane adhesive for ceramic and stone tiles, class R2T in compliance with EN 12004 standard. The adhesive is certified by GEV Institut as a product with very low emission level of volatile organic compounds (EMICODE EC1 R PLUS).

- **KERALASTIC**, two-component, high-performance polyurethane adhesive for ceramic tiles and stone materials, class R2 according to EN 12004.



4.1.3 CLASS A NATURAL, ENGINEERED CEMENT-BASED AND ENGINEERED RESIN-BASED MATERIAL (FOR INTERNAL APPLICATIONS) SENSITIVE TO THE FORMATION OF STAINS AND EFFLORESCENCE

For these types of stone, we suggest the use of the following adhesives to avoid the formation of stains:

- **GRANIRAPID**, two-component, high-performance, fast-setting and hydrating cementitious adhesive for ceramic tiles and stone materials, class C2F S1 according to EN 12004 (Progress 4 page 19). The adhesive is certified by GEV Institut as a product with very low emission level of volatile organic compounds (EMICODE EC1 PLUS).
- **KERAQUICKS1**, high-performance, deformable, fast setting, cementitious adhesive with no vertical slip, very low emission level of organic volatile compounds, for ceramic tiles and stone material, class C2FT S1 according to EN 12004 (Progress 5 page 20). The adhesive is certified by GEV Institut as a product with very low emission level of volatile organic compounds (EMICODE EC1 R PLUS).
- **ULTRALITE S1 QUICK**, One-component, high-performance, deformable, lightweight, rapid-setting and hydrating cementitious adhesive with no vertical slip, good trowelability, high wetting capacity and extremely high yield, for ceramic tiles, stone and thin porcelain tiles, class C2FT S1 in compliance with EN 12004.
- **ELASTORAPID**, two-component, high-performance, highly deformable,

LAYING STONE MATERIALS

Materials and systems to lay natural and engineered stone correctly

quick-setting and drying cementitious adhesive with no vertical slip and extended open time for ceramic tiles and stone material, class C2FTE S2 in compliance with EN 12004.

- **KERAQUICK S1 + LATEX PLUS**, quick-setting, highly deformable adhesive system, class C2FT S2 according to EN 12004. The high flexibility of this adhesive system makes it particularly suitable for laying on external surfaces, on façades or on surfaces more subject to deformation.

The aforementioned adhesives are efficient in solving the problems mentioned above thanks to the quick hydration of the binder with which they are formed. This property limits the humidity content in the adhesive in just a few hours to a level which does not provoke the formation of unsightly stains on the slabs of stone laid. Also, the use of quick products reduces the risk of the formation of efflorescence.

4.1.4 CLASS B* STONE MATERIALS

This class includes all the types of stone with deformation less than 0.3 mm following the bonding test with a quick-type adhesive (class C2F or C2FT). Use one of the following adhesives to lay this category of materials:

- **GRANIRAPID**, two-component, high-performance, fast-setting and hydrating cementitious adhesive for ceramic tiles and stone materials, class C2F S1 according to EN 12004 (Progress 4 page 19). The adhesive is certified by GEV Institut as a product with very low emission level of volatile organic compounds (EMICODE EC1 PLUS).

- **KERAQUICK S1**, high-performance, deformable, fast-setting cementitious adhesive with no vertical slip, for ceramic tiles and stone material, class C2FT S1 according to EN 12004 (Progress 5 page 20). The adhesive is certified by GEV Institut as a product with very low emission level of volatile organic compounds (EMICODE EC1 R PLUS).



Fig. 4.7 - Example of installation of marble with ELASTORAPID – Marina Bay Sands Resort – Singapore



Fig. 4.8 - Example of installation marble flooring with KERAQUICK – Casino Hall, Feuchtwangen – Germany



Fig. 4.9 - Example of installation of Verde Alpi marble flooring with KERALASTIC – Rolex Hall – Bienne – Switzerland

• **ULTRALITE S1 QUICK**, one-component, high-performance, deformable, lightweight, rapid-setting and hydrating cementitious adhesive with no vertical slip, good trowelability, high wetting capacity and extremely high yield, for ceramic tiles, stone and thin porcelain tiles, class C2FT S1 in compliance with EN 12004.

• **ELASTORAPID**, two-component, high-performance, highly deformable, quick-setting and drying cementitious adhesive with no vertical slip and extended open time for ceramic tiles and stone material, class C2FTE S2 according to EN 12004.

• **KERAQUICK S1 + LATEX PLUS**, quick-setting, highly deformable adhesive system, class C2FT S2 according to EN 12004. The high flexibility of this adhesive system makes it particularly suitable for laying on external surfaces, on façades or on surfaces more subject to deformation.



4.1.5 CLASS C STONE MATERIALS**

This class includes all the types of stone with deformation higher than 0.3 mm even after the bonding test with a quick-type adhesive.

The extreme sensitivity of these products means they may only be laid with adhesives which contain absolutely no water:

• **KERALASTIC**, two-component, high-performance, polyurethane adhesive for ceramic tiles and stone materials, class R2 according to EN 12004 (Progress 6 page 20).

• **KERAPOXY ADHESIVE**, two-component, epoxy adhesive with no vertical slip for ceramic tiles and stone material, class R2T according to EN 12004.

• **ULTRABOND ECO PU 2K**, two-component, solvent-free, high-performance, polyurethane adhesive for ceramic and stone tiles. The adhesive is certified by GEV Institut as a product with very low emission

LAYING STONE MATERIALS

Materials and systems to lay natural and engineered stone correctly

level of volatile organic compounds (EMICODE EC1 R PLUS), class R2T in compliance with EN 12004 standard.

4.2 CHOOSING THE RIGHT GROUT AND SEALANT FOR THE JOINTS

MAPEI has a wide array of grouting mortars and sealants for expansion joints which are suitable for application on natural stone coatings.

4.2.1 PRODUCTS FOR GROUTING JOINTS

- **KERACOLOR**, high-performance, polymer-modified, cement-based grout, available in a choice of versions: **SF** in white, for joints up to 4 mm wide; **FF** water-repellent with DropEffect® for joints up to 6 mm wide, or **GG** for joints from 4 to 15 mm. **Keracolor FF** and **Keracolor GG** are available in 14 different colours. In the case of stone floors to be polished after laying, **KERACOLOR** may be mixed with **FUGOLASTIC** (polymer latex for **KERACOLOR SF**, **FF** and **GG** to reduce the absorption of water and to improve the bond of the grout). **KERACOLOR** and **KERACOLOR + FUGOLASTIC** are class CG2WA according to EN 13888 and are certified by GEV as products with a very low emission level of volatile organic compounds (EMICODE EC1 R PLUS).

- **ULTRACOLOR PLUS**, high-performance, anti-efflorescence, quick-setting and drying, polymer-modified mortar with water-repellent DropEffect® and mould-resistant BioBlock® technology for grouting joints from 2 to 20 mm wide, and is available in 34 colours. **ULTRACOLOR PLUS** is class CG2WA according to EN 13888 and is certified by GEV as a product with a very low emission level of volatile organic compounds (EMICODE EC1 PLUS).

4.2.2 PRODUCTS FOR SEALING EXPANSION JOINTS

Special care must be taken when choosing the product to seal joints in stone material, because certain sealants, and in particular the acetic-



Fig. 4.10 - Example of staining on natural stone installed with acetic cross-linking silicone sealant



Fig. 4.11 - Example of staining on natural stone installed with acetic cross-linking silicone sealant



Fig. 4.12 - Sealing joint on façade with MAPESIL LM

crosslinking type, may stain the stone (Fig. 4.10 and 4.11). In the MAPEI product range, the most suitable sealants for this application are:

- **MAPESIL LM** neutral, mould-resistant, silicone sealant for stone and marble, certified by GEV as products with a very low emission level of volatile organic compounds (EMICODE EC1 PLUS).
- **MAPEFLEX PU20** and **MAPEFLEX PU21**, self-levelling, two-component polyurethane sealant for floor joints with movements up to 10% and 5% respectively when in service. Available in grey.



Fig. 5.1 - Laying engineered decorative elements with FIX & GROUT BRICK



Fig. 5.2 - An example of an application using FIX & GROUT BRICK for both bonding and grouting

5. SPECIAL LAYING CASES

5.1 LAYING DECORATIVE ELEMENTS IN CEMENT-BASED ENGINEERED MATERIAL

MAPEI also has a solution for laying this type of material:

- **FIX & GROUT BRICK** (Fig. 5.1 and 5.2) ready-to-use, high-performance mould-resistant adhesive paste with no vertical slip and BioBlock® technology class D2T. The special characteristics of this adhesive makes it suitable for bonding decorative elements in lightweight cementitious conglomerate and synthetic resin. Excess adhesive which seeps out from joints may also be smoothed over with a damp brush to act as a grout for the joints.

LAYING STONE MATERIALS

Materials and systems to lay natural and engineered stone correctly

Travertine

Laying on an anti-fracture membrane



ULTRACOLOR PLUS

- High-performance, anti-efflorescence, quick-setting and drying, polymer-modified mortar with water-repellent **DropEffect®** and mould-resistant **BioBlock®** technology for grouting joints from 2 to 20 mm wide, class **CG2WA** (EN 13888) and **EC1 Plus**



KERAQUICK S1 white + LATEX PLUS

- Quick-setting, highly deformable adhesive system, class **C2FT S2** according to EN 12004



MAPETEX SYSTEM

- Non-woven fabric used to form an anti-fracture and isolating layer when laying on old, damaged floors without having to observe the existing distribution joints



KERAQUICK S1 grey + LATEX PLUS

- Quick-setting, highly deformable adhesive system, class **C2FT S2** according to EN 12004



Old screed

Old flooring in ceramic material with microcracks

Progress 1

Laying interlocking stone on concrete

Concrete

Interlocking stone



KERAFLEX MAXI S1 ZERO

- Special, high-performance, deformable, white, cementitious adhesives, with extended open time and no vertical slip, with Low Dust technology, class **C2TE S1** according to EN 12004 and **EC1 R Plus**



KERACOLOR GG

- High-performance, polymer-modified, cement-based grout for joints from 4 to 15 mm, class **CG2WA** (EN 13888) and **EC1 R Plus**



Progress 2

Laying on façades

Verona Rosso



MAPESIL LM

- Neutral, mould-resistant, silicone sealant for stone and marble, **ECT1 Plus**



KERACOLOR GG

- High-performance, polymer-modified, cement-based grout for joints from 4 to 15 mm, class **CG2WA** (EN 13888) and **ECT1 R Plus**



KERABOND + ISOLASTIC

- Highly deformable adhesive system, class **C2E S2**



NIVOPLAN + PLANICRETE

- Levelling mortar for walls and ceilings

Carrara marble



KERACOLOR FF

- High-performance, polymer-modified, water-repellent, cement-based grout with **DropEffect**® technology for grouting joints of up to 6 mm, class **CG2WA** (EN 13888) and **ECT1 R Plus**



GRANIRAPID

- Two-component, high-performance, fast-setting and hydrating cementitious adhesive, for ceramic tiles and stone materials, class **C2F S1** (EN 12004), and **ECT1 R Plus**



TOPCEM PRONTO

- Ready-to-use, normal-setting, quick-drying with high thermal conductivity, class **CT-C30-F6-A1n-s1** (EN 13813) and **ECT1 R Plus**

Laying on heated screeds

System with heated elements

Progress 3

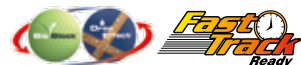
Progress 4

LAYING STONE MATERIALS

Materials and systems to lay natural and engineered stone correctly

Granite

"Eco" System



ULTRACOLOR PLUS

- High-performance, anti-efflorescence, quick-setting and drying, polymer-modified mortar with water-repellent **DropEffect®** and mould-resistant **BioBlock®** technology for grouting joints from 2 to 20 mm wide, class **CG2WA** (EN 13888) and **EC1 Plus**



KERAQUICK S1

- High-performance, deformable, fast setting cementitious adhesive with no vertical slip, class **C2FT S1** (EN 12004) and **EC1 R Plus**



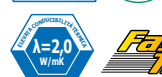
ULTRAPLAN

- Ultra-fast drying self-levelling compound, class **C30-F7-A2-s1** and **EC1 R Plus**



PRIMER G

- Synthetic, resin-based water-dispersion primer with very low volatile organic compounds (**EC1**)



TOPCEM PRONTO

- Ready-to-use, normal-setting, quick-drying with high thermal conductivity, class **CT-C30-F6-A1** (EN 13813) and **EC1 R Plus**



Alpine green

Laying dimensionally-unstable stone material



KERACOLOR FF

- High-performance, polymer-modified, water-repellent cement-based mortar with **DropEffect®** technology for grouting joints of up to 6 mm, class **CG2WA** (EN 13888) and **EC1 R Plus**



KERALASTIC

- Two-component, apolyurethane adhesive, class **R2** (EN 12004)



MAPECEM PRONTO

- Pre-blended, ready-to-use, quick-setting and drying (24 hours), controlled-shrinkage mortar for screeds, class **CT-C60-F10-A1** (EN 13813) and **EC1 R Plus**



Marble mosaic



KERACOLOR GG

- High-performance, polymer-modified cement-base grout for joints from 4 to 15 mm, class **CG2WA** (EN 13888) and **EC1 R Plus**

Waterproofing and laying in bathrooms and shower cubicles



ELASTORAPID white

- Two-component, high-performance, highly-deformable, quick-setting and quick-drying cementitious adhesive with no vertical slip and extended open time, class **C2FTE S2** (EN 12004)



MAPEGUM WPS

- Quick-drying, flexible, liquid membrane for waterproofing internal surfaces



NIVOPLAN + PLANICRETE

- Levelling mortar for walls and ceilings



Progress 7

Granite



ULTRACOLOR PLUS

- High-performance, anti-efflorescence, quick-setting and drying, polymer-modified mortar with water-repellent **DropEffect®** and mould-resistant **BioBlock®** technology for grouting joints from 2 to 20 mm wide, class **CG2WA** (EN 13888) and **EC1 Plus**

Waterproofing and laying on balconies and terraces



MAPEFLEX PU50 SL

- Fluid polyurethane sealant with a low modulus of elasticity for flooring joints



MAPEFOAM

- Closed cell polyethylene foam cord as a support to elastomeric sealants, for correct sizing of joints



ELASTORAPID grey

- Two-component, high-performance, highly deformable, quick-setting and drying cementitious adhesive with no vertical slip and extended open time, class **C2FTE S2** (EN 12004)



MAPEBAND

- Rubber tape with alkali-resistant fabric for cementitious waterproofing systems and liquid membrane



MAPELASTIC

- Two-component cementitious mortar, flexible down to -20°C, for waterproofing balconies, terraces, bathrooms and swimming pools, certified **EC1 R PLUS**



MAPENET 150

- Alkali-resistant (according to ETAG 004 directive) fibre glass mesh used to reinforce waterproof protection layers, anti-fracture membranes and cementitious smoothing and levelling layers

Existing flooring in ceramic material with microcracks

Progress 8

LAYING STONE MATERIALS

Materials and systems to lay natural and engineered stone correctly

Marble mosaic

Laying over existing cementitious ceramic flooring

MAPEFLEX PU20

- Self-levelling, two-component polyurethane sealant for flooring joints subject to movements of up to 10% certified **F-7.5- P ISO11600**

ULTRACOLOR PLUS

- High-performance, anti-efflorescence, quick-setting and drying, polymer-modified mortar with water-repellent **DropEffect®** and mould-resistant **BioBlock®** technology for grouting joints from 2 to 20 mm wide, class **CG2WA** (EN 13888) and **EC1 Plus**

KERAQUICK S1 grey + LATEX PLUS

- Two-component, high-performance, highly-deformable, quick-setting adhesive system with no vertical slip, class **C2FT S2** (EN 12004)

Existing ceramic flooring

Progress 9

Granite

ULTRACOLOR PLUS

- High-performance, anti-efflorescence, quick-setting and drying, polymer-modified mortar with water-repellent **DropEffect®** and mould-resistant **BioBlock®** technology for grouting joints from 2 to 20 mm wide, class **CG2WA** (EN 13888) and **EC1 Plus**

ULTRALITE S1

- One-component, high-performance, flexible, lightweight, cementitious adhesive with no vertical slip and long open time, **Low Dust** technology and extremely high yield. Easy to apply by trowel with excellent wetting properties, class **C2TE S1** (EN 12004) and **EC1 Plus**

Water-repellent gypsum board

Progress 10



6. SPECIFICATIONS

6.1 INSTALLATION OF STONE AND ENGINEERED STONE ON INTERNAL SUBSTRATES

6.1.1 INSTALLATION OF DIMENSIONALLY-STABLE STONE OR ENGINEERED STONE (MAPEI **CLASS A**) NOT SENSITIVE TO STAINING

PROCEDURE

Checking and preparing the substrate

The substrate on which the coating is to be installed must be well cured, strong, sufficiently dry and free of crumbly areas and any substance which could compromise adhesion of the coating. Traditional cementitious screeds and render require 7-10 days curing per centimetre of thickness.

Installation of flooring

Mix the adhesive and spread it on the substrate with a notched trowel; select the most suitable trowel according to the size of the coating to be installed. Choose a type of trowel which guarantees good buttering of the back of the tile. The tiles must be applied on the fresh adhesive within its specified open time, making sure that a skin has not formed on the surface of the adhesive. If a skin forms, a new layer of fresh adhesive must be applied. Press the tiles down firmly to make sure the adhesive is transferred onto the back of the tiles, and adjust the position of the tiles before the adhesive starts to set. Install the tiles with a properly sized joint and form distribution joints approximately every 20-25 m². When the adhesive has hardened, grout the tiles with a specific mortar and seal the joints using a suitable elastic sealant.

Choose the most suitable adhesive to install stable stone (Class A according to the MAPEI S.p.A classification system) not sensitive to staining, according to the type of substrate, with one of the following products:

LAYING STONE MATERIALS

Materials and systems to lay natural and engineered stone correctly

- **KERAFLEX** (see section 6.1.1.1) or **KERAQUICK S1** (rapid installation, see section 6.1.1.2) for natural stone on cementitious and anhydrite screeds, after applying **PRIMER G** (see section 6.1.1.5 and 6.1.1.6), non-heating cementitious screeds and well anchored plasterboard without a gypsum skimming layer;
- **KERAFLEX MAXI S1** (see section 6.1.1.3) or **GRANIRAPID** (rapid installation, see section 6.1.1.4) for natural stone and agglomerates on cementitious and anhydrite screeds, after applying **PRIMER G** (see section 6.1.1.5 and 6.1.1.6) heating and non-heating, waterproofing membranes (such as **MAPELASTIC** or **MAPEGUM WPS**) and existing ceramic or stone coatings;
- **KERAQUICK S1** mixed with **LATEX PLUS** (see section 6.1.1.7) for wooden substrates, bonded wood and resilients;
- **KERALASTIC** (see section 6.1.1.8) for metal substrates.

6.1.1.1 INSTALLATION OF NATURAL STONE ON NON-HEATING CEMENTITIOUS SCREEDS, CEMENTITIOUS RENDER OR WELL ANCHORED PLASTERBOARD WITHOUT A GYPSUM SKIMMING LAYER

Supply and installation of dimensionally stable natural or engineered stone coating (Class A according to the MAPEI S.p.A. classification system) in any size of tile, with open joints between the tiles, on a non-heating cementitious screed, cementitious render or well anchored plasterboard without a gypsum skimming layer using high-performance cementitious adhesive with no vertical slip and extended open time, class C2TE according to EN 12004 standard (such as **KERAFLEX** produced by MAPEI S.p.A.). The joints must be grouted with improved cementitious grout, class CG2WA according to EN 13888 standard (such as **ULTRACOLOR PLUS** produced by MAPEI S.p.A.). Distribution joints must be sealed with neutral-crosslinking silicone sealant, class F-25LM

according to ISO 11600 standard (such as **MAPESIL LM** produced by MAPEI S.p.A.).

The adhesive used for installation must have the following characteristics:

density (kg/m³): 1,500
pH: 13
pot life of mix: > 8 hours
open time: > 30 minutes (EN 1346)
adjustment time: 45 minutes
set to foot traffic: 24 hours
ready for service: 14 days
EMICODE: EC1 R Plus

The grouting product must have the following characteristics:

density (kg/m³): 1,980
pot life of mix: 20-25 minutes
ready for service: 24 hours (48 hours for basins and swimming pools)
EMICODE: EC1 Plus

The sealing product for the joints must have the following characteristics:

elongation at failure: 250%
movement when in service: ± 25%
Shore A hardness: 21

The following are included and calculated in the price:

all costs to prepare the substrate;
supply and application of adhesive;
formation and sealing of elastic distribution joints every 20-25 m²;
perforated brass profiled strips, where required, to separate different types of floor;

LAYING STONE MATERIALS

Materials and systems to lay natural and engineered stone correctly

grouting of joints in the colour specified by the Works Director;

cleaning of the surface with suitable detergent and rinsing of the surface;

trimming, wastage, cleaning and removal of waste material upon completion of work, separate collection of waste material, transport and delivery of waste material to an authorised waste disposal tip and waste disposal charges;

all other activities required to consign work completed according to specifications.

6.1.1.2 RAPID INSTALLATION OF NATURAL STONE ON NON-HEATING CEMENTITIOUS SCREEDS, CEMENTITIOUS RENDER OR WELL ANCHORED PLASTERBOARD WITHOUT A GYPSUM SKIMMING LAYER

Supply and rapid installation of dimensionally stable natural or engineered stone flooring (Class A according to the MAPEI S.p.A. classification system) in any size of tile, with open joints between the tiles, on a non-heating cementitious screed, cementitious render or well anchored plasterboard without a gypsum skimming layer using high-performance, rapid, deformable, non-slip cementitious adhesive, class C2FT S1 according to EN 12004 standard, (such as **KERAQUICK S1** produced by MAPEI S.p.A.). The joints must be grouted with high-performance, anti-efflorescence, rapid-setting and drying, water-repellent, mould-resistant grout, class CG2WA according to EN 13888 standard, (such as **ULTRACOLOR PLUS** produced by MAPEI S.p.A.). Distribution joints must be sealed with neutral-crosslinking silicone sealant, class F-25LM according to ISO 11600 standard, (such as **MAPESIL LM** produced by MAPEI S.p.A.).

The product used for installation must have the following characteristics:

density (kg/m³): 1,500

pH: approx. 11

pot life of mix: 30 minutes

open time: 15-20 minutes

set to foot traffic: 2-3 hours

ready for service: 24 hours (3 days for storage tanks and swimming pools)

EMICODE: EC1 R Plus

The grouting product must have the following characteristics:

density (kg/m³): 1,980

pot life of mix: 20-25 minutes

ready for service: 24 hours (48 hours for basins and swimming pools)

EMICODE: EC1 Plus

The sealing product for the joints must have the following characteristics:

elongation at failure: 250%

movement when in service: $\pm 25\%$

Shore A hardness: 21

The following are included and calculated in the price:

all costs to prepare the substrate;

supply and application of adhesive;

formation and sealing of elastic distribution joints every 20-25 m²;

perforated brass profiled strips, where required, to separate different types of floor;

grouting of joints in the colour specified by the Works Director;

cleaning of the surface with suitable detergent and rinsing of the surface;

trimming, wastage, cleaning and removal of waste material upon completion of work, separate collection of waste material, transport and delivery of waste material to an authorised waste disposal tip and waste disposal charges;

all other activities required to consign work completed according to specifications.

LAYING STONE MATERIALS

Materials and systems to lay natural
and engineered stone correctly



6.1.1.3. INSTALLATION OF NATURAL STONE OR ENGINEERED STONE MATERIAL ON HEATING CEMENTITIOUS SCREEDS, WATERPROOF MEMBRANES OR OLD CERAMIC OR STONE FLOORING OR COATING

Supply and installation of dimensionally stable natural or engineered stone flooring (Class A according to the MAPEI S.p.A. classification system) in any size of tile, with open joints between the tiles, on a heating cementitious screed, waterproofing membrane (such as **MAPELASTIC** or **MAPEGUM WPS** produced by MAPEI S.p.A) or existing ceramic or stone flooring or coating using high-performance, deformable cementitious adhesive with no vertical slip and extended open time, class C2TE S1 according to EN 12004 standard, (such as **KERAFLEX MAXI S1** produced by MAPEI S.p.A.). The joints must be grouted with improved cementitious grout, class CG2WA according to EN 13888 standard, (such as **ULTRACOLOR PLUS** produced by MAPEI S.p.A.). Distribution joints must be sealed with neutral-crosslinking silicone sealant, class F-25LM according to ISO 11600 standard, (such as **MAPESIL LM** produced by MAPEI S.p.A.).

The product used for installation must have the following characteristics:

density (kg/m³): 1,500
pH: > 12
pot life of mix: > 8 hours
open time: > 30 minutes (EN 1346)
set to foot traffic: 24 hours
ready for service: 14 days

The grouting product must have the following characteristics:

density (kg/m³): 1,980
pot life of mix: 20-25 minutes
ready for service: 24 hours (48 hours for basins and swimming pools)
EMICODE: EC1 Plus

The sealing product for the joints must have the following characteristics:

elongation at failure: 250%

movement when in service: $\pm 25\%$

Shore A hardness: 21

The following are included and calculated in the price:

all costs to prepare the substrate;

supply and application of adhesive;

formation and sealing of elastic distribution joints every 20-25 m²;

perforated brass profiled strips, where required, to separate different types of floor;

grouting of joints in the colour specified by the Works Director;

cleaning of the surface with suitable detergent and rinsing of the surface;

trimming, wastage, cleaning and removal of waste material upon completion of work, separate collection of waste material, transport and delivery of waste material to an authorised waste disposal tip and waste disposal charges;

all other activities required to consign work completed according to specifications.



6.1.1.4 RAPID INSTALLATION OF NATURAL STONE OR ENGINEERED STONE MATERIAL ON HEATING OR NON-HEATING CEMENTITIOUS SCREEDS, WATERPROOFING MEMBRANES OR OLD CERAMIC, EXISTING FLOORING OR COATING

Supply and rapid installation of dimensionally stable natural or engineered stone flooring (Class A according to the MAPEI S.p.A. classification system) in any size of tile, with open joints between the tiles, on a heating cementitious screed, waterproofing membrane (such as **MAPELASTIC** or **MAPEGUM WPS** produced by MAPEI S.p.A) or existing ceramic or stone flooring or coating using high-performance, rapid, deformable cementitious adhesive, class C2F S1 according to EN 12004 standard (such as **GRANIRAPID** produced by MAPEI S.p.A.). The joints must be sealed with high-performance, anti-efflorescence, rapid-setting and

LAYING STONE MATERIALS

Materials and systems to lay natural
and engineered stone correctly

drying, water-repellent, mould-resistant grout, class CG2WA according to EN 13888 standard, (such as **ULTRACOLOR PLUS** produced by MAPEI S.p.A.). Distribution joints must be sealed with neutral-crosslinking silicone sealant, class F-25LM according to ISO 11600 standard, (such as **MAPESIL LM** produced by MAPEI S.p.A.).

The product used for installation must have the following characteristics:

density (kg/m³): 1,600

pH: approx. 11

pot life of mix: 45 minutes

open time: approx. 20 minutes (EN 1346)

set to foot traffic: 3-4 hours

ready for service: 24 hours (3 days for storage tanks and swimming pools)

EMICODE: EC1 R Plus

The grouting product must have the following characteristics:

density (kg/m³): 1,980

pot life of mix: 20-25 minutes

ready for service: 24 hours (48 hours for basins and swimming pools)

EMICODE: EC1 Plus

The sealing product for the joints must have the following characteristics:

elongation at failure: 250%

movement when in service: $\pm 25\%$

Shore A hardness: 21

The following are included and calculated in the price:

all costs to prepare the substrate;

supply and application of adhesive;

formation and sealing of elastic distribution joints every 20-25 m²;
perforated brass profiled strips, where required, to separate different types of floor;
grouting of joints in the colour specified by the Works Director;
cleaning of the surface with suitable detergent and rinsing of the surface;
trimming, wastage, cleaning and removal of waste material upon completion of work, separate collection of waste material, transport and delivery of waste material to an authorised waste disposal tip and waste disposal charges;
all other activities required to consign work completed according to specifications.



6.1.1.5. INSTALLATION OF NATURAL STONE ON ANHYDRITE SCREEDS, GYPSUM-BASED RENDER, WELL ANCHORED PLASTERBOARD WITH A GYPSUM SKIMMING LAYER OR CELLULAR CONCRETE

Supply and installation of dimensionally stable natural or engineered stone flooring (Class A according to the MAPEI S.p.A. classification system) in any size of tile, with open joints between the tiles, on an anhydrite screed, gypsum-based render, well anchored plasterboard with a gypsum skimming layer or cellular concrete using high-performance cementitious adhesive with no vertical slip and extended open time, class C2TE according to EN 12004 standard, (such as **KERAFLEX** produced by MAPEI S.p.A.), after applying a suitable synthetic, resin-based adhesion promoting primer in water dispersion with very low content of volatile organic compounds (VOC) (such as **PRIMER G** produced by MAPEI S.p.A.). The joints must be grouted with improved cementitious grout, class CG2WA according to EN 13888 standard, (such as **ULTRACOLOR PLUS** produced by MAPEI S.p.A.). Distribution joints must be sealed with neutral-crosslinking silicone sealant, class F-25LM according to ISO 11600 standard, (such as **MAPESIL LM** produced by MAPEI S.p.A.).

LAYING STONE MATERIALS

Materials and systems to lay natural
and engineered stone correctly

The product used for installation must have the following characteristics:

density (kg/m³): 1,500

pH: > 13

pot life of mix: > 8 hours

open time: > 30 minutes (EN 1346)

set to foot traffic: 24 hours

ready for service: 14 days

EMICODE: EC1 R Plus

The grouting product must have the following characteristics:

density (kg/m³): 1,980

pot life of mix: 20-25 minutes

ready for service: 24 hours (48 hours for basins and swimming pools)

EMICODE: EC1 Plus

The sealing product for the joints must have the following characteristics:

elongation at failure: 250%

movement when in service: ± 25%

Shore A hardness: 21

The following are included and calculated in the price:

all costs to prepare the substrate;

supply and application of adhesive;

formation and sealing of elastic distribution joints every 20-25 m²;

perforated brass profiled strips, where required, to separate different types of floor;

grouting of joints in the colour specified by the Works Director;

cleaning of the surface with suitable detergent and rinsing of the surface;

trimming, wastage, cleaning and removal of waste material upon completion of work, separate collection of waste material, transport

and delivery of waste material to an authorised waste disposal tip and waste disposal charges;

all other activities required to consign work completed according to specifications.



6.1.1.6 RAPID INSTALLATION OF NATURAL STONE ON ANHYDRITE SCREEDS, GYPSUM-BASED RENDER, WELL ANCHORED PLASTERBOARD WITH A GYPSUM SKIMMING LAYER

Supply and rapid installation of dimensionally stable natural or engineered stone flooring (Class A according to the MAPEI S.p.A. classification system) in any size of tile, with open joints between the tiles, on an anhydrite screed, gypsum-based render, well anchored plasterboard with a gypsum skimming layer using high-performance, rapid, deformable cementitious adhesive with no vertical slip, class C2FT S1 according to EN 12004 standard, (such as **KERAQUICK S1** produced by MAPEI S.p.A.), after applying a suitable synthetic, resin-based adhesion promoting primer in water dispersion with very low content of volatile organic compounds (VOC) (such as **PRIMER G** produced by MAPEI S.p.A.). The joints must be sealed with high-performance, anti-efflorescence, rapid-setting and drying, water-repellent, mould-resistant grout, class CG2WA according to EN 13888 standard, (such as **ULTRACOLOR PLUS** produced by MAPEI S.p.A.). Distribution joints must be sealed with neutral-crosslinking silicone sealant, class F-25LM according to ISO 11600 standard, (such as **MAPESIL LM** produced by MAPEI S.p.A.).

The product used for installation must have the following characteristics:

density (kg/m³): 1,500

pH: approx. 11

pot life of mix: 30 minutes

open time: 15-20 minutes

set to foot traffic: 2-3 hours

LAYING STONE MATERIALS

Materials and systems to lay natural
and engineered stone correctly

ready for service: 24 hours (3 days for storage tanks and swimming pools)

EMICODE: EC1 R Plus

The grouting product must have the following characteristics:

density (kg/m³): 1,980

pot life of mix: 20-25 minutes

ready for service: 24 hours (48 hours for basins and swimming pools)

EMICODE: EC1 Plus

The sealing product for the joints must have the following characteristics:

elongation at failure: 250%

movement when in service: $\pm 25\%$

Shore A hardness: 21

The following are included and calculated in the price:

all costs to prepare the substrate;

supply and application of adhesive;

formation and sealing of elastic distribution joints;

perforated brass profiled strips, where required, to separate different types of floor;

grouting of joints in the colour specified by the Works Director;

cleaning of the surface with suitable detergent and rinsing of the surface;

trimming, wastage, cleaning and removal of waste material upon completion of work, separate collection of waste material, transport and delivery of waste material to an authorised waste disposal tip and waste disposal charges;

all other activities required to consign work completed according to specifications.



6.1.1.7 INSTALLATION OF NATURAL STONE OR ENGINEERED STONE MATERIAL ON WOODEN SUBSTRATES, EXISTING BONDED WOODEN COVERINGS OR RESILIENTS

Supply and rapid installation of dimensionally stable natural or engineered stone flooring (Class A according to the MAPEI S.p.A. classification system) in any size of tile, with open joints between the tiles, on a wooden substrate, existing bonded wooden coating or resilient coating using high-performance, rapid-setting, non-slip, highly deformable cementitious adhesive, class C2FT S2 according to EN 12004 standard, (such as **KERAQUICK + LATEX PLUS** produced by MAPEI S.p.A.). The joints must be sealed with high-performance, anti-efflorescence, rapid-setting and drying, water-repellent, mould-resistant grout, class CG2WA according to EN 13888 standard, (such as **ULTRACOLOR PLUS** produced by MAPEI S.p.A.). Distribution joints must be sealed with neutral-crosslinking silicone sealant, class F-25LM according to ISO 11600 standard, (such as **MAPESIL LM** produced by MAPEI S.p.A.).

The adhesive used for installation must have the following characteristics:

density (kg/m³): 1,550

pot life of mix: 30 minutes

open time: 10-15 minutes

ready for service: 24 hours

The grouting mortar must have the following characteristics:

density (kg/m³): 1,980

pot life of mix: 20-25 minutes

ready for service: 24 hours (48 hours for basins and swimming pools)

EMICODE: EC1 Plus

LAYING STONE MATERIALS

Materials and systems to lay natural
and engineered stone correctly

The sealing product for the joints must have the following characteristics:

elongation at failure: 250%

movement when in service: $\pm 25\%$

Shore A hardness: 21

The following are included and calculated in the price:

all costs to prepare the substrate;

supply and application of adhesive;

formation and sealing of expansion joints;

grouting of joints in the colour specified by the Works Director;

cleaning of the surface with suitable detergent and rinsing of the surface;

trimming, wastage, cleaning and removal of waste material upon completion of work, separate collection of waste material, transport and delivery of waste material to an authorised waste disposal tip and waste disposal charges;

all other activities required to consign work completed according to specifications.

6.1.1.8 INSTALLATION OF NATURAL STONE OR ENGINEERED STONE MATERIAL ON METAL SUBSTRATES (KERALASTIC/ ULTRABOND ECO PU 2K)

Supply and installation of dimensionally stable natural or engineered stone coating (Class A according to the MAPEI S.p.A. classification system) in any size of tile, with open joints between the tiles, on a metal substrate using two-component, improved adhesion reactive adhesive, class R2 according to EN 12004 standard, (such as **KERALASTIC** produced by MAPEI S.p.A.). For installation on vertical substrates, the adhesive must also have non-slip properties, class R2T according to EN 12004 standard, (such as **ULTRABOND ECO PU 2K** produced by MAPEI S.p.A.). The joints must be sealed with high-performance, anti-efflorescence, rapid-setting and drying, water-repellent, mould-resistant grout, class CG2WA according to EN 13888 standard, (such as **ULTRACOLOR PLUS**

produced by MAPEI S.p.A.). Distribution joints must be sealed with neutral-crosslinking silicone sealant, class F-25LM according to ISO 11600 standard (such as **MAPESIL LM** produced by MAPEI S.p.A.).

The adhesive used for installation must have the following characteristics:

density (kg/m³): 1,450-1,500
mixing ratio: 94-6/88-12
pot life of mix: 30-40 minutes/20-30 minutes
open time: 50 minutes/20 minutes
ready for service: 7 days

The grouting mortar must have the following characteristics:

density (kg/m³): 1,980
pot life of mix: 20-25 minutes
ready for service: 24 hours (48 hours for basins and swimming pools)
EMICODE: EC1 Plus

The sealing product for the joints must have the following characteristics:

elongation at failure: 250%
movement when in service: ± 25%
Shore A hardness: 21

The following are included and calculated in the price:

all costs to prepare the substrate;
supply and application of adhesive;
formation and sealing of expansion joints with specific elastic sealant;
grouting of joints in the colour specified by the Works Director;
cleaning of the surface with suitable detergent and rinsing of the surface;
trimming, wastage, cleaning and removal of waste material upon

LAYING STONE MATERIALS

Materials and systems to lay natural
and engineered stone correctly

completion of work, separate collection of waste material, transport and delivery of waste material to an authorised waste disposal tip and waste disposal charges;

all other activities required to consign work completed according to specifications.

6.2 INSTALLATION OF STONE AND CEMENT-BASED ENGINEERED STONE ON EXTERNAL SUBSTRATES

6.2.1 INSTALLATION OF DIMENSIONALLY-STABLE STONE OR CEMENT-BASED ENGINEERED STONE (MAPEI **CLASS A**) NOT SENSITIVE TO STAINING

PROCEDURE

Checking and preparing the substrate

The substrate on which the coating is to be installed must be well cured, strong, sufficiently dry and free of crumbly areas paint, oil, loose or detached parts and any substance which could compromise adhesion of the coating. Traditional cementitious screeds require 7-10 days curing per centimetre of thickness. Wait at least 3 months for application on concrete. The time required for each case must be assessed according to the composition of the concrete.

When installing on waterproofing membranes, make sure the membrane is dry, clean and well adhered to the underlying screed. The strength of the screed must generally be more than 25-30 MPa, while the strength of cementitious render must be more than 1 MPa.

Installation of coating

Mix the adhesive and spread it on the substrate with a notched trowel; select the most suitable trowel according to the size of the coating to be installed. Choose a type of trowel which guarantees good buttering of the back of the tile. The adhesive must also be applied on the back of the tiles using the double-buttering technique to guarantee that there are absolutely no gaps in the installation bed. The tiles must be applied on the fresh adhesive within its specified open time, making sure that a skin

has not formed on the surface of the adhesive. If a skin forms, a new layer of fresh adhesive must be applied. Press the tiles down firmly to make sure the adhesive is transferred onto the back of the tiles, and adjust the position of the tiles before the adhesive starts to set.

Install the tiles with a joint at least 5 mm wide on each side, and form distribution joints approximately every 9 m².

When the adhesive has hardened, grout the flooring with a specific mortar and seal the joints using a suitable elastic sealant. Install dimensionally stable stone or engineered cement-based stone coating (Class A) not sensitive to staining on cementitious substrates or waterproofing systems from the **MAPELASTIC** range with **KERABOND + ISOLASTIC** (see section 6.2.1.1) or, for rapid installation, with **KERAQUICK S1 + LATEX PLUS** (see section 6.2.1.2). For installation on metallic substrates, carefully check that it is possible to install stone and, if so, use **KERALASTIC/ ULTRABOND ECO PU 2K** (see section 6.2.1.3).



6.2.1.1 INSTALLATION ON CEMENTITIOUS SUBSTRATES

Supply and installation of dimensionally stable natural or cement-based engineered stone coating (Class A according to the MAPEI S.p.A. classification system) not sensitive to staining in any size of tile, with open joints between the tiles, on a cementitious substrate using high-performance, highly deformable cementitious adhesive applied using the double-buttering technique, class C2E S2 according to EN 12004 standard, (such as **KERABOND + ISOLASTIC** produced by MAPEI S.p.A.). The joints must be grouted with improved cementitious grout, class CG2WA according to EN 13888 standard, (such as **ULTRACOLOR PLUS** produced by MAPEI S.p.A.). Distribution joints must be sealed with neutral-crosslinking silicone sealant, class F-25LM according to ISO 11600 standard, (such as **MAPESIL LM** produced by MAPEI S.p.A.).

LAYING STONE MATERIALS

Materials and systems to lay natural
and engineered stone correctly

The adhesive used for installation, mixed with latex, must have the following characteristics:

density (kg/m³): 1,500

open time: 20-30 minutes

pot life of mix: 8 hours

adjustment time: 45 minutes

The grouting product must have the following characteristics:

density (kg/m³): 1,980

pot life of mix: 20-25 minutes

ready for service: 24 hours (48 hours for basins and swimming pools)

EMICODE: EC1 Plus

The sealing product for the joints must have the following characteristics:

elongation at failure: 250%

movement when in service: $\pm 25\%$

Shore A hardness: 21

The following are included and calculated in the price:

all costs to prepare the substrate;

supply and application of adhesive;

formation and sealing of elastic distribution joints every 20-25 m²;

perforated brass profiled strips, where required, to separate different types of floor;

grouting of joints in the colour specified by the Works Director;

cleaning of the surface with suitable detergent and rinsing of the surface;

trimming, wastage, cleaning and removal of waste material upon completion of work, separate collection of waste material, transport and delivery of waste material to an authorised waste disposal tip and waste disposal charges;

all other activities required to consign work completed according to specifications.

6.2.1.2 RAPID INSTALLATION ON CEMENTITIOUS SUBSTRATES OR WATERPROOFING SYSTEMS

Supply and rapid installation of dimensionally stable natural or cement-based engineered stone coating (Class A according to the MAPEI S.p.A. classification system) in any size of tile, with open joints between the tiles, on a cementitious substrate or waterproofing system (such as **MAPELASTIC** produced by MAPEI S.p.A.) using high-performance, rapid, non-slip, highly deformable cementitious adhesive applied using the double-buttering technique, class C2FT S2 according to EN 12004 standard, (such as **ELASTORAPID** produced by MAPEI S.p.A.). The joints must be grouted with improved cementitious grout, class CG2WA according to EN 13888 standard, (such as **ULTRACOLOR PLUS** produced by MAPEI S.p.A.). Distribution joints must be sealed with neutral-crosslinking silicone sealant, class F-25LM according to ISO 11600 standard, (such as **MAPESIL LM** produced by MAPEI S.p.A.).

The product used for installation must have the following characteristics:

density (kg/m³): 1,650

open time: ≥ 30 minutes

setting time: 120-150 minutes

ready for service: 24 hours (3 days for basins and swimming pools)

The grouting product must have the following characteristics:

density (kg/m³): 1,980

pot life of mix: 20-25 minutes

ready for service: 24 hours

EMICODE: EC1 Plus

The sealing product for the joints must have the following characteristics:

elongation at failure: 250%

LAYING STONE MATERIALS

Materials and systems to lay natural
and engineered stone correctly

movement when in service: $\pm 25\%$

Shore A hardness: 21

The following are included and calculated in the price:

all costs to prepare the substrate;

supply and application of adhesive;

formation and sealing of elastic distribution joints every 20-25 m²;

perforated brass profiled strips, where required, to separate different types of floor;

grouting of joints in the colour specified by the Works Director;

cleaning of the surface with suitable detergent and rinsing of the surface;

trimming, wastage, cleaning and removal of waste material upon completion of work, separate collection of waste material, transport and delivery of waste material to an authorised waste disposal tip and waste disposal charges;

all other activities required to consign work completed according to specifications.

6.2.1.3 INSTALLATION ON METAL SUBSTRATES

Supply and installation of dimensionally stable natural or cement-based engineered stone coating (Class A according to the MAPEI S.p.A. classification system) in any size of tile, with open joints between the tiles, on a metal substrate using two-component, improved adhesion, reactive adhesive, class R2 according to EN 12004 (such as **KERALASTIC** made by MAPEI S.p.A.). For installation on vertical substrates, the adhesive must also have non-slip properties, class R2T according to EN 12004 standard (such as **ULTRABOND ECO PU 2K** produced by MAPEI S.p.A.). The joints must be sealed with high-performance, anti-efflorescence, rapid-setting and drying, water-repellent, mould-resistant grout, class CG2WA according to EN 13888 standard, (such as **ULTRACOLOR PLUS** produced by MAPEI S.p.A.). Distribution joints must be sealed with neutral-crosslinking silicone sealant, class F-25LM according to ISO 11600 standard (such as **MAPESIL LM** produced by MAPEI S.p.A.).

The adhesive used for installation must have the following characteristics:

density (kg/m³): 1,450-1,500

mixing ratio: 94-6/88-12

pot life of mix: 30-40 minutes/20-30 minutes

open time: 50 minutes/20 minutes

ready for service: 7 days

The grouting mortar must have the following characteristics:

density (kg/m³): 1,980

pot life of mix: 20-25 minutes

ready for service: 24 hours (48 hours for basins and swimming pools)

EMICODE: EC1 Plus

The sealing product for the joints must have the following characteristics:

elongation at failure: 250%

movement when in service: $\pm 25\%$

Shore A hardness: 21

The following are included and calculated in the price:

all costs to prepare the substrate;

supply and application of adhesive;

formation and sealing of expansion joints with specific elastic sealant;

grouting of joints in the colour specified by the Works Director;

cleaning of the surface with suitable detergent and rinsing of the surface;

trimming, wastage, cleaning and removal of waste material upon completion of work, separate collection of waste material, transport and delivery of waste material to an authorised waste disposal tip and waste disposal charges;

all other activities required to consign work completed according to specifications.

LAYING STONE MATERIALS

Materials and systems to lay natural
and engineered stone correctly

6.3 LAYING STONE MATERIALS WITH RAPID SYSTEMS

6.3.1 INSTALLATION OF STONE OR CEMENT-BASED ENGINEERED STONE MODERATELY STABLE TO WATER (MAPEI **CLASS B**) OR STABLE TO WATER (MAPEI **CLASS A**) AND SENSITIVE TO STAINING

PROCEDURE

Checking and preparing the substrate

The substrate on which the coating is to be installed must be well cured, strong, sufficiently dry and free of paint, oil, loose or detached parts crumbly areas and any substance which could compromise adhesion of the coating. Traditional cementitious screeds require 7-10 days curing per centimetre of thickness. Wait at least 3 months for application on concrete. The time required for each case must be assessed according to the composition of the concrete.

When installing on waterproofing membranes, make sure the membrane is dry, clean and well adhered to the underlying screed. The strength of the screed must generally be more than 25-30 MPa, while the strength of cementitious render must be more than 1 MPa. It is important to check that substrates are sufficiently dry before carrying out installation.

Installation of coating

Mix the adhesive and spread it on the substrate with a notched trowel; select the most suitable trowel according to the size of the coating to be installed. Choose a type of trowel which guarantees good buttering of the back of the tile. The adhesive must also be applied on the back of the tiles using the double-buttering technique to guarantee that there are absolutely no voids in the installation bed. The tiles must be applied on the fresh adhesive within its specified open time, making sure that a skin has not formed on the surface of the adhesive. If a skin forms, a new layer of fresh adhesive must be applied. Press the tiles down firmly to make sure the adhesive is transferred onto the back of the tiles, and adjust the position of the tiles before the adhesive starts to set.

Install the tiles with a joint at least 5 mm wide on each side, and form distribution joints approximately every 9 m². When the adhesive has hardened, grout the flooring with a specific mortar and seal the joints using a suitable elastic sealant. Install stone or engineered cement-based stone coating with moderate dimensional stability (Class B) or stable stone (Class A) sensitive to staining on cementitious substrates or waterproofing systems from the **MAPELASTIC** range with **ELASTORAPID** (see section 6.3.1.1). For installation on metallic substrates, carefully check that it is possible to install stone and, if so, use **KERALASTIC** or **ULTRABOND ECO PU 2K** (see section 6.3.1.2).



6.3.1.1 INSTALLATION ON CEMENTITIOUS SUBSTRATES OR WATERPROOFING SYSTEMS

Supply and installation of natural or cement-based engineered stone coating with moderate dimensional stability (Class B according to the MAPEI S.p.A. classification system) or stable stone coating (Class A according to the MAPEI S.p.A. classification system) sensitive to staining in any size of tile, with open joints between the tiles, on a cementitious substrate or waterproofing system (such as **MAPELASTIC** produced by MAPEI S.p.A.) using high-performance, rapid, non-slip, highly deformable cementitious adhesive applied using the double-buttering technique, class C2FT S2 according to EN 12004 standard, (such as **ELASTORAPID** produced by MAPEI S.p.A.). The joints must be grouted with improved cementitious grout, class CG2WA according to EN 13888 standard, (such as **ULTRACOLOR PLUS** produced by MAPEI S.p.A.). Distribution joints must be sealed with neutral-crosslinking silicone sealant, class F-25LM according to ISO 11600 standard (such as **MAPESIL LM** produced by MAPEI S.p.A.).

The product used for installation must have the following characteristics:

density (kg/m³): 1,650

LAYING STONE MATERIALS

Materials and systems to lay natural
and engineered stone correctly

open time: ≥ 30 minutes

setting time: 120-150 minutes

ready for service: 24 hours (3 days for storage tanks and swimming pools)

The grouting product must have the following characteristics:

density (kg/m^3): 1,980

pot life of mix: 20-25 minutes

ready for service: 24 hours (48 hours for basins and swimming pools)

EMICODE: EC1 Plus

The sealing product for the joints must have the following characteristics:

elongation at failure: 250%

movement when in service: $\pm 25\%$

Shore A hardness: 21

The following are included and calculated in the price:

all costs to prepare the substrate;

supply and application of adhesive;

formation and sealing of elastic distribution joints every 20-25 m^2 ;

perforated brass profiled strips, where required, to separate different types of floor;

grouting of joints in the colour specified by the Works Director;

cleaning of the surface with suitable detergent and rinsing of the surface;

trimming, wastage, cleaning and removal of waste material upon completion of work, separate collection of waste material, transport and delivery of waste material to an authorised waste disposal tip and waste disposal charges;

all other activities required to consign work completed according to specifications.



6.4 LAYING STONE MATERIALS WITH RAPID SYSTEM

6.4.1 INSTALLATION ON METAL SUBSTRATES

Supply and installation of natural or cement-based engineered stone coating with moderate dimensional stability (Class B according to the MAPEI S.p.A. classification system) or stable stone coating (Class A according to the MAPEI S.p.A classification system) sensitive to staining in any size of tile, with open joints between the tiles, on a metal substrate using two-component, improved adhesion, reactive adhesive, class R2 according to EN 12004 standard, (such as **KERALASTIC** produced by MAPEI S.p.A.). For installation on vertical substrates, the adhesive must also have non-slip properties, class R2T according to EN 12004 standard, (such as **ULTRABOND ECO PU 2K** produced by MAPEI S.p.A.). The joints must be sealed with high-performance, anti-efflorescence, rapid-setting and drying, water-repellent, mould-resistant grout, class CG2WA according to EN 13888 standards, (such as **ULTRACOLOR PLUS** produced by MAPEI S.p.A.). Distribution joints must be sealed with neutral-crosslinking silicone sealant, class F-25LM according to ISO 11600 standard, (such as **MAPESIL LM** produced by MAPEI S.p.A.).

The adhesive used for installation must have the following characteristics:

density (kg/m³): 1,450-1,500

mixing ratio: 94-6/88-12

pot life of mix: 30-40 minutes/20-30 minutes

open time: 50 minutes/20 minutes

ready for service: 7 days

The grouting mortar must have the following characteristics:

density (kg/m³): 1,980

pot life of mix: 20-25 minutes

ready for service: 24 hours

EMICODE: EC1 Plus

LAYING STONE MATERIALS

Materials and systems to lay natural
and engineered stone correctly

The sealing product for the joints must have the following characteristics:

elongation at failure: 250%

movement when in service: $\pm 25\%$

Shore A hardness: 21

The following are included and calculated in the price:

all costs to prepare the substrate;

supply and application of adhesive;

formation and sealing of expansion joints with specific elastic sealant;

grouting of joints in the colour selected by the Works Director;

cleaning of the surface with suitable detergent and rinsing of the surface;

trimming, wastage, cleaning and removal of waste material upon completion of work, separate collection of waste material, transport and delivery of waste material to an authorised waste disposal tip and waste disposal charges;

all other activities required to consign work completed according to specifications.

6.4.2 INSTALLATION OF STONE OR ENGINEERED STONE UNSTABLE TO WATER (MAPEI **CLASS C**)

PROCEDURE

Checking and preparing the substrate

The substrate on which the coating is to be installed must be well cured, strong, sufficiently dry and free of paint, oil, loose or detached parts, crumbly areas and any substance which could compromise adhesion of the coating. Traditional cementitious screeds require 7-10 days curing per centimetre of thickness. Wait at least 3 months for application on concrete. The time required for each case must be assessed according to the composition of the concrete.

When installing on waterproofing membranes, make sure the membrane is dry, clean and well adhered to the underlying screed. The strength of the screed must generally be more than 25-30 MPa, while the strength of cementitious render must be more than 1 MPa. It is important to check that substrates are sufficiently dry before carrying out installation.

Installation of coating

Mix the adhesive and spread it on the substrate with a notched trowel; select the most suitable trowel according to the size of the coating to be installed. Choose a type of trowel which guarantees good buttering of the back of the tile. Apply the tiles on the adhesive while it is still fresh before the crosslinking process takes place. Press the tiles down firmly to make sure the adhesive is transferred onto the back of the tiles, and adjust the position of the tiles before the adhesive starts to set. Install the tiles with a joint at least 5 mm wide on each side, and form distribution joints approximately every 9 m². When the adhesive has hardened, grout the flooring with a specific mortar and seal the joints using a suitable elastic sealant. Installation of stone or engineered stone unstable to water (Class C according to the MAPEI S.p.A classification system) may only be carried out using resin-based reactive adhesive, such as **KERALASTIC** or **ULTRABOND ECO PU 2K** (see section 6.4.1.1).

6.4.2.1 INSTALLATION ON ALL TYPES OF SUBSTRATE (EXCEPT WATERPROOFING MEMBRANES)

Supply and installation of natural or cement-based engineered stone coating unstable to water (Class C according to the MAPEI S.p.A. classification system) in any size of tile, with open joints between the tiles, on all types of substrate (except waterproofing membranes) using two-component, improved adhesion, reactive adhesive, class R2 according to EN 12004 standard (such as **KERALASTIC** produced by MAPEI S.p.A.). For installation on vertical substrates, the adhesive must also have non-slip properties, class R2T according to EN 12004 standard (such as **ULTRABOND ECO PU 2K** produced by MAPEI S.p.A.). The joints must be sealed with high-performance, anti-efflorescence, rapid-setting and drying, water-repellent, mould-resistant grout, class CG2WA according to EN 13888 standard, (such as **ULTRACOLOR PLUS** produced by MAPEI S.p.A.). Distribution joints must be sealed with neutral-crosslinking silicone sealant, class F-25LM according to ISO 11600 standard, (such as **MAPESIL LM** produced by MAPEI S.p.A.).

LAYING STONE MATERIALS

Materials and systems to lay natural
and engineered stone correctly

The adhesive used for installation must have the following characteristics:

density (kg/m³): 1,450-1,500

mixing ratio: 94-6/88-12

pot life of mix: 30-40 minutes/20-30 minutes

open time: 50 minutes/20 minutes

ready for service: 7 days

The grouting mortar must have the following characteristics:

density (kg/m³): 1,980

pot life of mix: 20-25 minutes

ready for service: 24 hours

EMICODE: EC1 Plus

The sealing product for the joints must have the following characteristics:

elongation at failure: 250%

movement when in service: $\pm 25\%$

Shore A hardness: 21

The following are included and calculated in the price:

all costs to prepare the substrate;

supply and application of adhesive;

formation and sealing of expansion joints with specific elastic sealant;

grouting of joints in the colour specified by the Works Director;

cleaning of the surface with suitable detergent and rinsing of the surface;

trimming, wastage, cleaning and removal of waste material upon completion of work, separate collection of waste material, transport and delivery of waste material to an authorised waste disposal tip and waste disposal charges;

all other activities required to consign work completed according to specifications.

7. REFERENCES



BOCCONI UNIVERSITY, MILAN – ITALY

Installation of white Carrara marble with TOPCEM PRONTO, MAPELASTIC, ELASTORAPID and GRANIRAPID



SHEIKH ZAYED BIN SULTAN AL NAHYAN GRAND MOSQUE, ABU DHABI - UAE

Installation of marble slabs in interiors and marble mosaics on the main dome with ADESILEX P10, KERABOND T, ISOLASTIC, KERACOLOR FF, FUGOLASTIC, KERAPOXY, MAPESIL LM

LAYING STONE MATERIALS

Materials and systems to lay natural
and engineered stone correctly



CENTRAL TRAIN STATION, FRANKFURT AM MAIN – GERMANY

Installation of natural stone
on platform with EPORIP,
MAPECEM, MAPESTONE 1,
KERALASTIC, ULTRACOLOR
PLUS



HOTEL KEMPINSKI, ŠTRBSKÉ PLESO - SLOVACCHIA

Waterproofing and installation
of marble slabs with TOPCEM
PRONTO, PRIMER G,
MAPELASTIC, MAPELASTIC
SMART, KERAFLEX MAXI S1,
GRANIRAPID, KERAPOXY,
MAPESIL AC



**1 WILLIAM STREET HOTEL,
BRISBANE - AUSTRALIA**

Installing slabs of granite
with KERAFLEX MAXI S1,
ULTRACOLOR PLUS



**SAGRADA FAMILIA,
BARCELONA - SPAIN**

Installing natural stone with
KERAQUICK S1,
ULTRACOLOR PLUS

LAYING STONE MATERIALS

Materials and systems to lay natural and engineered stone correctly



FASHION DRIVE SHOPPING CENTER, SAN PEDRO GARZA GARCIA - MEXICO

Installing marble and granite with ULTRAFLEX LFT, FLEXCOLOR CQ, MAPESIL



FAVILLA APARTMENT COMPLEX - PIETRASANTA (LUCCA) - ITALY

Installing natural stone on a façade with MAPELASTIC, KERAFLEX MAXI S1, KERALASTIC and MAPEFLEX PU45

Technical Notebook

LAYING STONE MATERIALS

Materials and systems to lay natural and engineered stone correctly

HEAD QUARTERS

MAPEI SpA

Via Cafiero, 22 - 20158 Milan

Tel. +39-02-37673.1

Fax +39-02-37673.214

Internet: www.mapei.com

E-mail: mapei@mapei.it