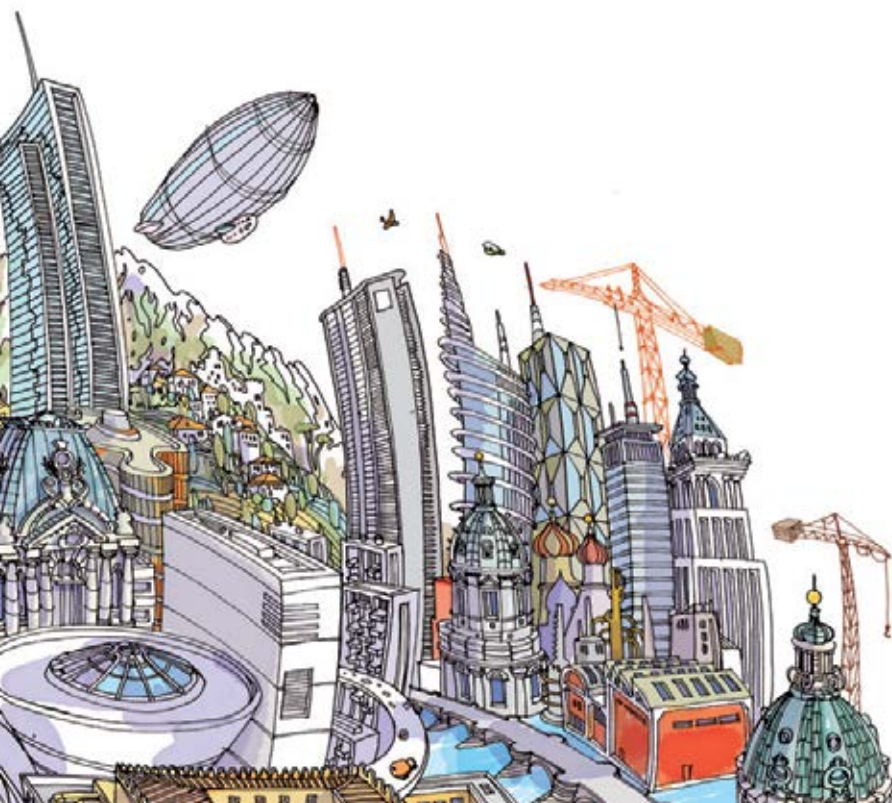


# MAPEI

## IN SOUTHERN AFRICA



[www.mapei.co.za](http://www.mapei.co.za)

**MAPEI**

ADHESIVES • SEALANTS • CHEMICAL PRODUCTS FOR BUILDING





## TECHNOLOGY YOU CAN BUILD ON

### THE WORLD OF MAPEI

Founded in Milan in 1937, Mapei is today's world leader in the production of adhesives, sealants and chemical products for building. Currently, the Mapei Group has 68 subsidiaries with 63 production facilities operating in over 31 countries on 5 continents.

Mapei has always placed great emphasis on research and invests 12% of its total workforce and 5% of its turnover in R&D. Sustainable development is a core focus of the Group, and 70% of its R&D efforts are devoted to developing eco-sustainable and environmentally-friendly products which meet LEED\* requirements.

The Group has developed a global sales and technical service network, which offers an efficient technical assistance service that is valued by architects, engineers, contractors and developers.

*\*Leadership in Energy and Environmental Design.*

### MAPEI IN SOUTH AFRICA

Mapei products have been distributed in South Africa since 2007 and, in July 2009, a combination of growth potential in Africa and the growing demand in South Africa led to the opening of a fully-owned subsidiary, Mapei South Africa (Pty) LTD.

The company distributes Mapei products throughout the SADEC region. It offers customers the wide-ranging benefits that come from having the backing of the Group's unparalleled knowledge, technical experts, research capabilities and product specialists.

#### **Mapei South Africa has launched the following product lines in the local market:**

##### **Building Line**

- Waterproofing
- Sealants
- Flooring
- Concrete Repair
- Structural Strengthening

##### **Admixtures for Concrete**

##### **Products for underground construction**

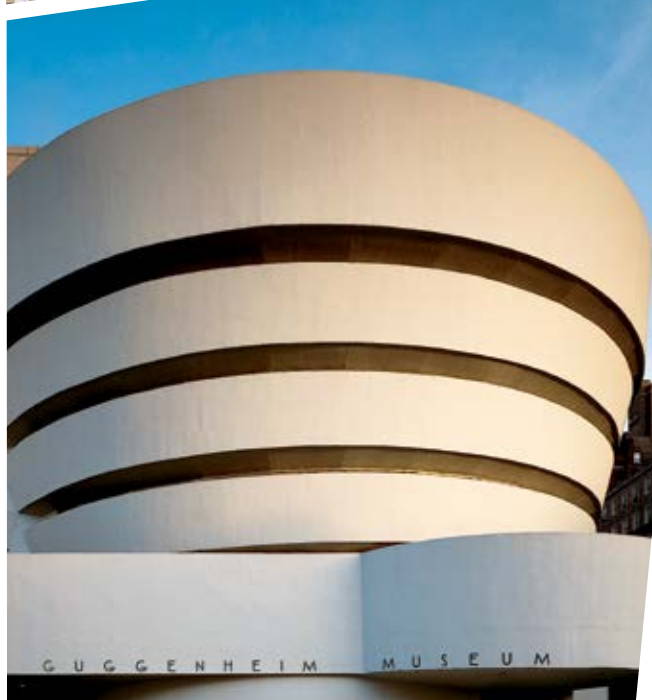
##### **Cement Grinding Additives**



## WORLD-CLASS PRODUCTS FOR WORLD-CLASS PROJECTS

### PORTSIDE - Cape Town, South Africa

**Products used:** Dynamon Easy 31, Mapetard SD 2000, Mapecure SRA 27, Prosfas, Triblock P, Mapefloor I 300SL.



### GUGGENHEIM MUSEUM - New York, USA

**Products used:** Mapefer 1K - corrosion protection, Elastocolor Paint - protective paint, Mapegrout T60 - repair mortar, Mapelastix waterproofing membrane reinforced with Mapenet 150.



### SUBWAY (C LINE) - Rome, Italy

**Products used:** Mapequick CBS System, Mapeblox T, Polyfoamer FP, Silicajet ST, Mapefill, Mapegrout Compact, Mapegrout Tissotropico, Lamposilex.





**DRAGON BRIDGE** - Danang, Vietnam  
**Products used:** Antipluviol, Dynamon SR1, Mapefluid R104.

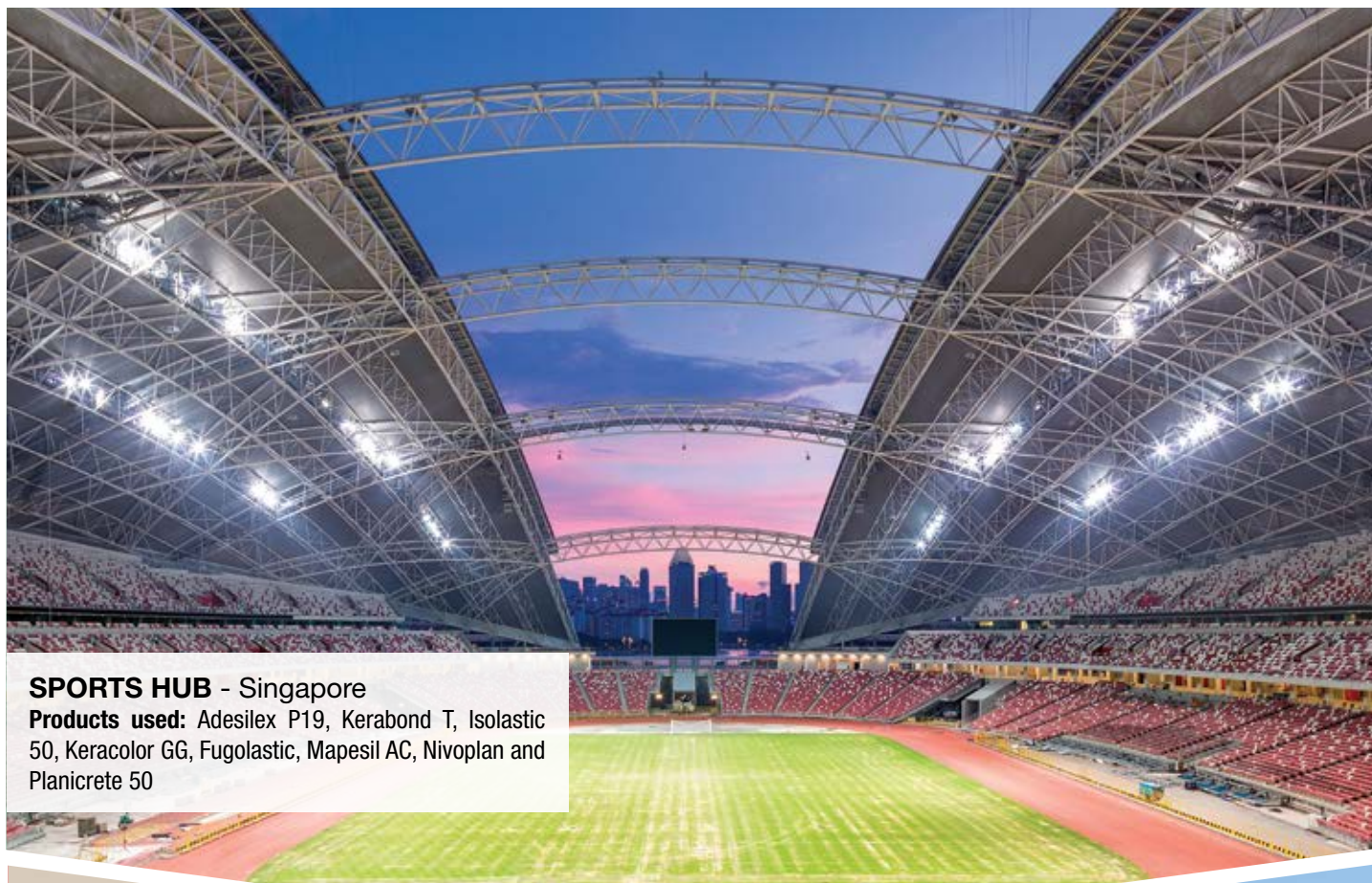


**NORDLYSKATEDRALEN** - Alta, Norway  
**Products used:** Dynamon SX-N\*, Montocryl\*, Nonset 50\*, Ultrabond Eco S955 1K



**LIGHTED FOUNTAIN** - Lisbon, Portugal  
**Products used:** Eporip, Mapeband, Mapelastec, Nivoplan, Planicrete.





## **SPORTS HUB** - Singapore

**Products used:** Adesilex P19, Kerabond T, Isolastic 50, Keracolor GG, Fugolastic, Mapesil AC, Nivoplan and Planicrete 50



## **FERRARI ENZO MUSEUM** – Modena Italy

**Products used:** Evolight, Mapefloor Finish 56, Mapefloor I 500 W, Mapecolor Paste, Mapeflex PU 45, Mapenet 150, Primer AS, Quarzo 0.5, Topcem Pronto, Primer SN, Triblock P



## **102 RIVONIA** - Johannesburg, South Africa

**Products used:** Dynamon Easy 31, Mapecure WF75, Mapeform Eco 31, Planitop Smooth & Repair, Planitop 100, Mapefix, Eporip

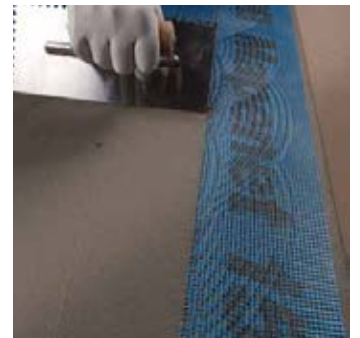
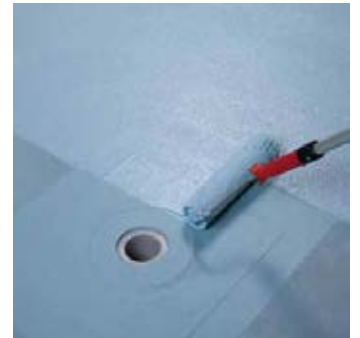




## Waterproofing, from top to bottom

Mapei has decades of experience of waterproofing in the international market and offers a wide range of specific, safe and durable solutions from foundations to roof tops. The solution for waterproofing above ground is MAPELASTIC, our two-component, elastic, cementitious waterproofing mortar. MAPELASTIC is also available in a SMART version, which is easier to apply especially in particularly difficult environments.

The newly-developed MAPELASTIC AQUADEFENSE is a ready-to-use, elastic liquid membrane, ideal for rapidly creating waterproofing layers.



## PRODUCT HIGHLIGHT: MAPELASTIC

Mapei's renowned Mapelastic two-component cementitious mortar is the proven solution internationally for waterproofing and protecting major concrete structures and renders, and cementitious screeds as used on balconies, terraces, bathrooms and swimming pools. The cured layer of Mapelastic remains flexible under all environmental conditions and is resistant to chemical attack from sulphates, chlorides and carbon dioxide.

**Please refer to our Product CD available from your local Mapei representative or visit our website:**

[www.mapei.co.za](http://www.mapei.co.za)

**for a complete list of waterproofing products.**



## High Performance Sealants

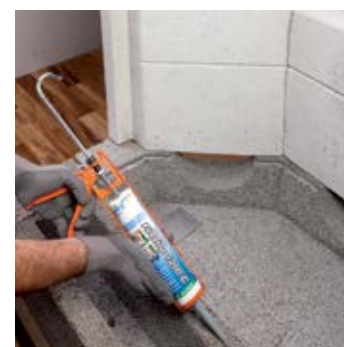
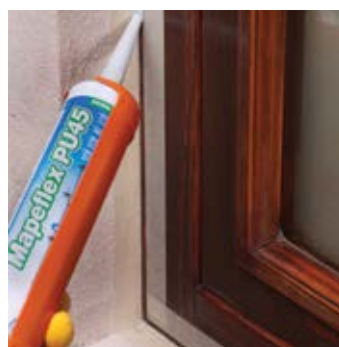
We offer a series of sealants to satisfy any technical and application requirement of craftsmen and professional users, with one- and two-component acrylic, silicone, polyurethane, epoxy-polyurethane and hybrid products. This includes:

- The MAPESIL range (acetic and neutral silicone sealants)
- The MAPEFLEX range (acrylic, polyurethane and epoxy-polyurethane sealants and adhesives)
- The ULTRABOND range (acrylic and hybrid adhesives)

The Mapei sealant range also offers professional sealers high-tech products with well-defined performance and long-lasting results.

These include advanced technology products such as:

- MAPESIL 300° C, an elastic sealant for high temperatures with high thermal resistance
- MAPEFLEX BLACKFILL, a bituminous sealant for the maintenance of bituminous membranes
- MAPEFLEX FIRESTOP 1200°C, a refractory grout which guarantees heat and smokeproof seals



## PRODUCT HIGHLIGHT: MAPEFLEX PU45

### Polyurethane sealant

Mapeflex PU45 has been specially developed for sealing expansion and distribution joints in horizontal and vertical surfaces, including those which are subject to occasional hydrocarbon chemical attack. It is also recommended for flexible bonds between similar and different materials most commonly used in the building industry for both internal and external applications, as well as a replacement for mechanical fasteners.

#### Use Mapeflex PU45 as a sealant for:

- Sealing expansion and distribution joints subject to movements up to 20% of the average width of the joint
- Sealing cracks
- Sealing pipework systems for air conditioning and electric cables
- Sealing sheet-steel sections, such as flashing and guttering
- Sealing general fillet joints

#### Use as an adhesive:

The high-bonding and rapid curing characteristics of Mapeflex PU45 make it suitable as an adhesive at thicknesses up to 3 mm, for joining various materials and for bonding on a wide range of substrate materials

**Please refer to our Product CD available from your local Mapei representative or visit our website:**

**[www.mapei.co.za](http://www.mapei.co.za)**

**for a complete list of sealant products.**







## Products for Ceramics

Mapei offers a complete range of products to help select the most suitable laying system. The range includes cementitious and paste adhesives, hydraulic binders and pre-blended mortars for screeds, primers, skimming compounds, grouts, sealants and complementary products. Since its introduction in the year 2000, Mapei decided to implement the new European standards (now applied worldwide) regarding the classification of adhesives and grouts for ceramic tiles and stone.

Mapei also has a complete range of innovative grouts for all types of internal and external ceramic, terracotta, stone and glass mosaic floors and coatings. The range includes cementitious grouts, epoxy grouts and paste products used in all types of environment, especially residential and commercial. A special mention goes to KERAPOXY DESIGN, two-component, decorative epoxy mortar, available in a limitless range of colours, ideal for glass mosaics.

## PRODUCT HIGHLIGHT: ADESILEX P9

High-performance, cementitious adhesive with no vertical slip and extended open time for ceramic tiles and stone materials.

### Where to use Adesilex P9:

Interior and exterior bonding of ceramic tiles and stone materials (that are suitable to humidity) and mosaics on floors, walls, and ceilings. Also suitable for spot bonding of insulating materials such as expanded polystyrene, rock and glass wool, Eraclit, sound-deadening panels, etc.



**Please refer to our Product CD available from your local Mapei representative or visit our website:**  
**[www.mapei.co.za](http://www.mapei.co.za)**  
**for a complete list of products for ceramics.**





## Concrete Repair Products

This is Mapei's most famous product line, first introduced in 1937 and continually developed to meet the diverse and evolving needs of the building industry.

The products have been created specifically for repairing concrete structures (that until recently were considered beyond repair), renovating buildings of historical interest, and strengthening and consolidating masonry work and reinforced concrete.

We offer technologically innovative solutions tailored to the specific requirements for repairing any concrete structure from dams to viaducts, from canals to water treatment plants, and from buildings of historical interest to construction work of the future. We have products that meet the most sophisticated design requirements in compliance with EN 1504 European standards. Also, pre-blended mortars and special cementitious binders with practically no shrinkage ('volumetrically stable') are available.

## PRODUCT HIGHLIGHT: PLANITOP SMOOTH & REPAIR R4

Planitop Smooth & Repair R4 is a quick-setting, fibre-reinforced, controlled-shrinkage thixotropic mortar for repairing and smoothing concrete. It may be applied in thicknesses ranging from 3 mm to 40 mm in a single layer.

**Planitop is used for non-structural repairs and smoothing layers on internal and external, horizontal and vertical concrete surfaces, such as:**

- Quick repairs to deteriorated parts in concrete, the corners of beams, pillars, buffer walls, comices and the front edges of balconies
- Quickly smoothing over surface defects in cast concrete, such as gravel clusters, spacer holes, construction joints, etc. before painting the surface
- Repairing and smoothing over concrete mouldings on civil buildings, such as skirt roofs and protruding decorative elements
- Repairing prefabricated concrete structures

Planitop is also suitable for repairing exposed structures in permanent contact with water.



**Please refer to our Product CD available from your local Mapei representative or visit our website:**  
[www.mapei.co.za](http://www.mapei.co.za)  
**for a complete list of plastering products.**

## The science of structural strengthening

The Mapei FRP System is a sophisticated strengthening system, which uses a combination of polymer-matrix carbon fibre and glass fibre fabrics and plates to solve any strengthening problem. The efficiency of the strengthening system has been tested by simulating seismic activity on

model buildings, and in European and university research centres. The FRP system includes everything required to prepare and strengthen structural elements correctly and to apply protective, decorative coatings.

### PRODUCT HIGHLIGHT: CARBOPLATE

Carboplate is a pultruded carbon fibre plate pre-impregnated in epoxy based resin, protected by a double plastic film. It is used for repairing and strengthening reinforced concrete structures damaged by time and natural causes, as well as anti-seismic strengthening of structures built on earthquake zones.

#### Some applications of Carboplate are:

- Repair and upgrade of beams for flexural strengthening
- Repair of structures damaged by fire or earthquakes
- Reinforce industrial and/or commercial structures to cope with an increase of static loads from extra equipment, machinery, etc
- Reinforce structures subject to vibration
- Anti-seismic strengthening of vaulted structures without having to increase the seismic masses
- Reinforcement of load bearing elements in restructured buildings



Please refer to our Product CD available from your local Mapei representative or visit our website:

[www.mapei.co.za](http://www.mapei.co.za)

for a complete list of structural strengthening products.

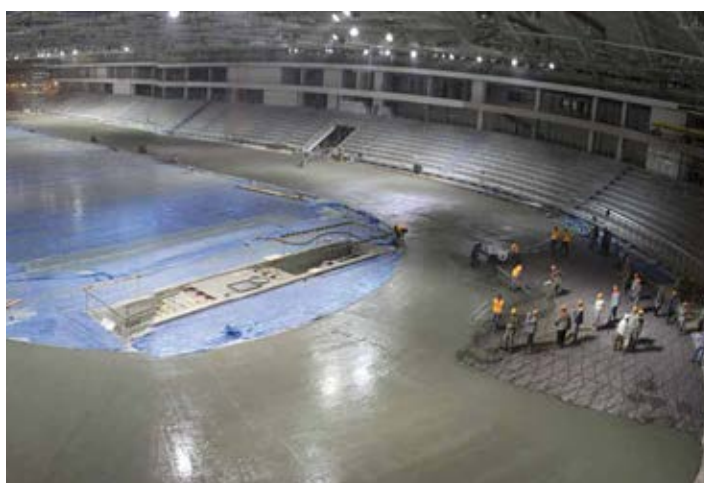
## Admixtures For Concrete

Mapei's **high-technology admixtures** comprise a comprehensive series of products including hyper-plasticisers, super-plasticisers, air-entraining agents, accelerators, retarders, curing compounds and form release agents.

An example is the DYNAMON product line, formulated with acrylic superplasticisers to eliminate steam treatment in the production processes of the precast industry or to extend the workability time of ready-mix concrete.

We also offer products for making self-compacting concrete, which allows concrete to be laid and cast much quicker, and eliminates the need for vibro-compacting.

Admixtures for the ready-mix and precast concrete industry are evolving rapidly. Please contact Mapei South Africa to discuss your specific requirements.



Please refer to our Product CD available from your local Mapei representative or visit our website:

[www.mapei.co.za](http://www.mapei.co.za)

for a complete list of concrete admixture products.

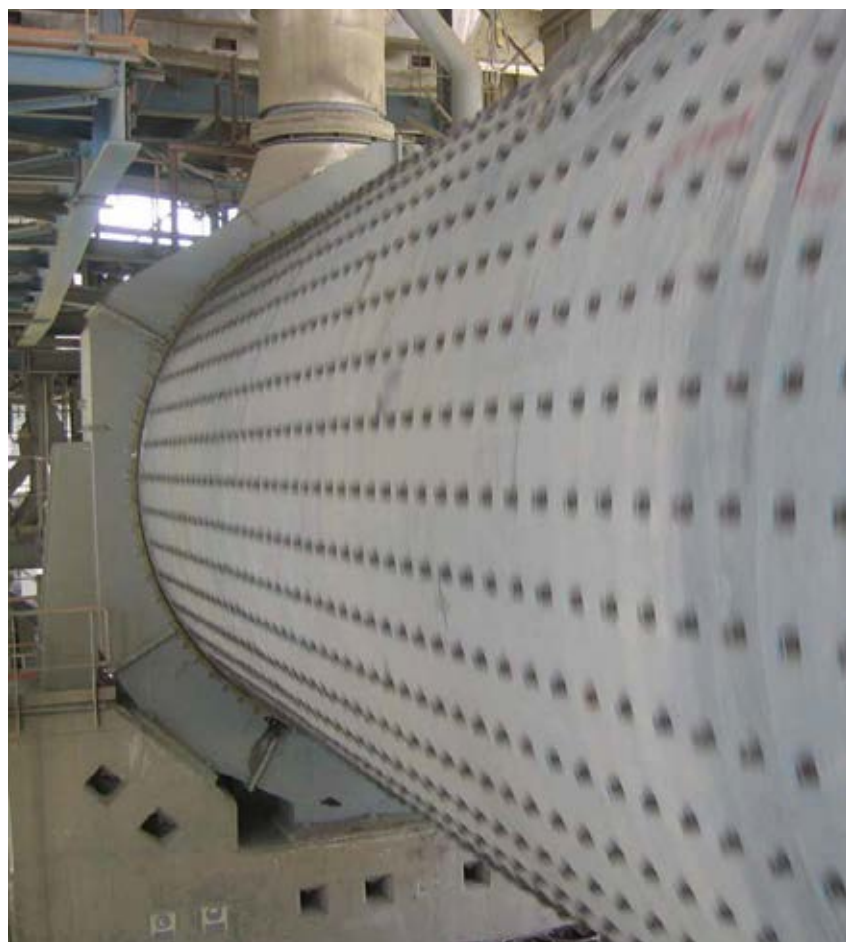


## Products for underground construction

Underground projects have unique characteristics due to their complexity during the design phase, and especially because of the severe work environment which requires experienced technicians and special technology.

Mapei formed its 'Underground Technology Team' in 1999 in response to the growing demand from the construction market for a range of products and technical assistance dedicated to underground areas.

Through this specialist team, Mapei offers internationally tested solutions to its clients' technical requirements in the field of underground constructions.



## Cement Grinding Additives

Mapei offers a range of dedicated products to enhance process efficiency in the production of cement.

**Examples are two families of grinding aids:** MA.G.A. (Mapei Grinding Aids) and MA.P.E. (Mapei Performance Enhancers), for ball mills and vertical mills. These are formulated to solve the problem of agglomeration inside grinding mills and improve the quality of cement. Their use allows the operating conditions of plants to be optimised, offering important economical advantages.

**Please refer to our Product CD available from your local Mapei representative or visit our website:**

**[www.mapei.co.za](http://www.mapei.co.za)**

**for a complete list of underground construction and grinding additive products.**

### **Mapei South Africa**

Unit 2C, Anchor Industrial Park c/o Springbok  
& Taaljard Road - Bartlett, Johannesburg

Tel. +27 11 552 8476

Fax +27 11 552 8449

Website: [www.mapei.co.za](http://www.mapei.co.za)

E-mail: [info@mapei.co.za](mailto:info@mapei.co.za)