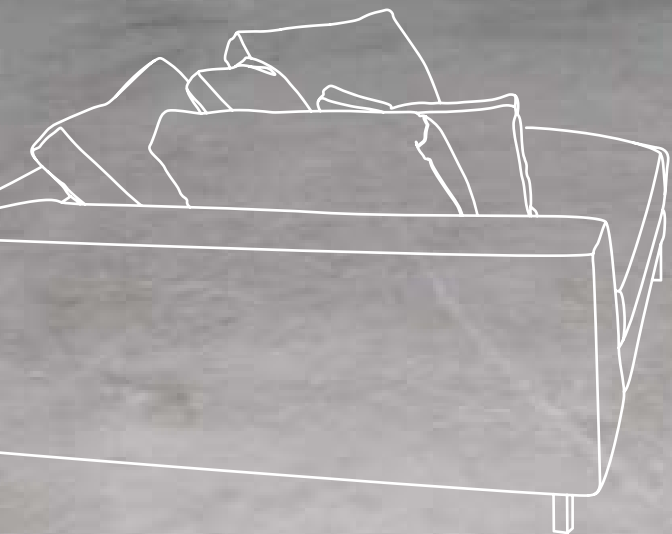


# INTERIOR LIVING



by  
**ULTRATOP<sup>®</sup>**  
**LOFT**





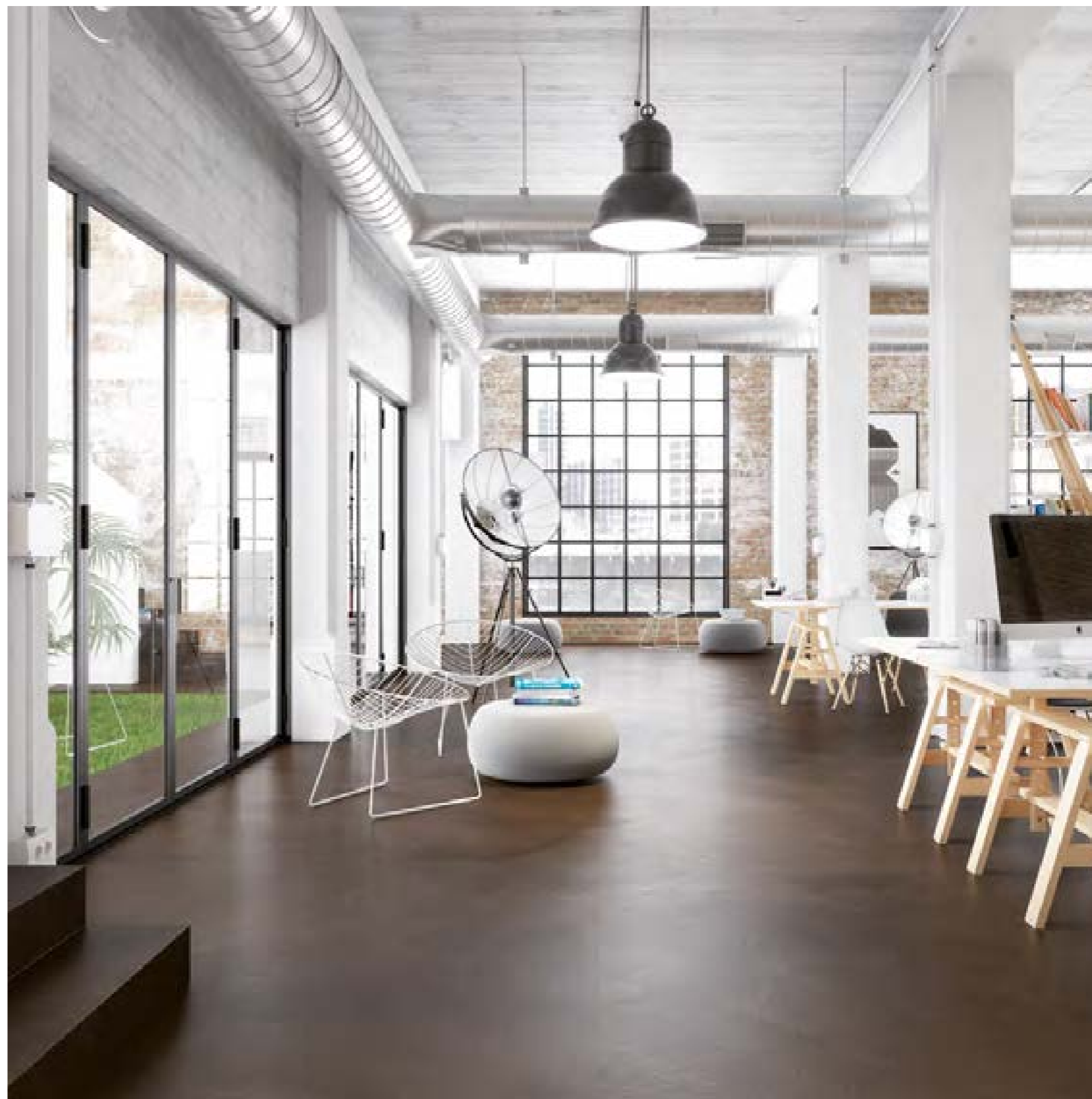
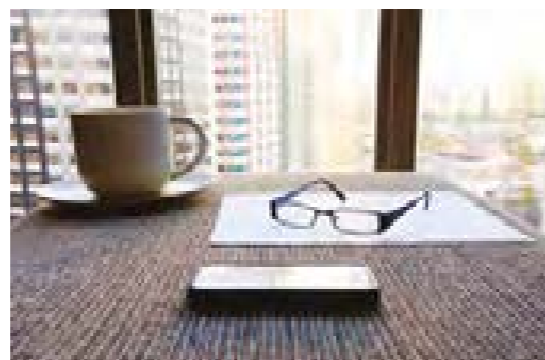
LEVANDE, VÄLKOMNANDE OCH FUNKTIONELL. I PRESTIGEFULLA MILJÖER. **RÄTT ATMOSFÄR** SKAPAS SOM ETT RESULTAT AV ESTETISKA VAL OCH KOMBINATIONER SOM BETONAR DET **VÄSENTLIGA OCH PERSONLIGA**. – TVÅ OLIKA PERSONLIGHETER KAN LEVA I PERFEKT HARMONI MED VARANDRA. **CEMENT**BASERADE YTOR GER **STORA MÖJLIGHETER** ATT SKAPA NÅGOT UTÖVER DET VANLIGA. DETTA ÄR TANKEN BAKOM MAPEIS MÅLINRIKTADE OCH INNOVATIVA LÖSNING DÄR NYANSER, LINJER OCH SLUTRESULTAT BLIR GRUNDSTENARNA I EN MODERN INTERIÖRDESIGN. OCH HÄR UPPSTÅR EN EXTRA FÖRDEL: **MAXIMAL TILLFÖRLITLIGHET**, OAVSETT HUR INTENSIV GÅNGTRAFIK GOLVET UTSÄTTS FÖR. DEN **HÖGA PRESTANDAN** I TERMER AV MEKANISK HÅLLFASTHET OCH BESTÄNDIGHET MOT NÖTNING MÖJLIGGÖR STORA, ÖPPNA GOLVYTOR UTAN AVBROTT.

*LIVING, WELCOMING AND WORKING. IN PRESTIGIOUS ENVIRONMENTS. CREATING THE **RIGHT ATMOSPHERE** IS THE RESULT OF AESTHETIC AND COMPOSITIONAL CHOICES THAT HIGHLIGHT **ESSENTIALITY AND PERSONALITY**. TWO CHARACTERISTICS THAT CAN LIVE TOGETHER IN PERFECT HARMONY. **CEMENTITIOUS** SURFACES REPRESENT AN **ORIGINAL OPPORTUNITY** TO GO BEYOND ROUTINE CONVENTIONS. THIS IS WHAT LIES BEHIND MAPEI'S IDEA FOR A DEDICATED, INNOVATIVE PROPOSAL, IN WHICH SHADES, LINEARITY AND END RESULTS BECOME THE VITAL LYMPH OF CONTEMPORARY INTERIOR DESIGN. WITH AN ADDED ADVANTAGE: **MAXIMUM RELIABILITY**, WHATEVER THE LEVEL OF FOOT TRAFFIC, IN CIVIL SURROUNDINGS. THANKS TO ITS **HIGH PERFORMANCE** CHARACTERISTICS OF MECHANICAL AND ABRASION RESISTANCE IN CREATING CONTINUOUS, WITHOUT INTERRUPTION FLOORINGS.*

# ARBETSSYTTOR

VÅRT FRIHETSBEGREPP INNEBÄR ATT VÄGGAR OCH GOLV SAMSPELAR OCH BILDAR EN UTTRYCKSFULL HELHET. VÅRA PRODUKTER SKAPAR EN VID OCH HARMONISK ÖPPENHET PÅ PLATSER DÄR VI ARBETAR ELLER KOPPLAR AV. DE SÄTTER EN PERSONLIG PRÄGEL UTAN ATT STÖRA BALANSEN I HELHETEN. DENNA KONTINUITET FÖRSTÄRKS YTTRELLIGARE I DIALOGEN MELLAN INTERIÖREN OCH EXTERIÖREN.

*THE CONCEPT OF LIBERTY AIMS FOR ABSOLUTE INVOLVEMENT BETWEEN FLOORS AND WALLS WHICH COME TO LIFE WITH A MARKED MATERIAL IMPACT. FROM WORK SPACES TO RELAXATION AREAS, OUR VIEW CONQUERS WIDER, MORE HARMONIOUS HORIZONS WHICH, WHILE CREATING THEIR OWN PERSONALITY, SAFEGUARD THEIR OVERALL COMPOSITIONAL HARMONY. CONTINUITY WHICH IS THEN RENEWED THROUGH A DIALOGUE BETWEEN INTERIORS AND EXTERIORS.*



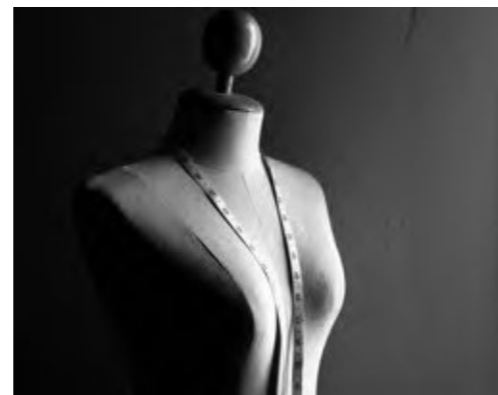
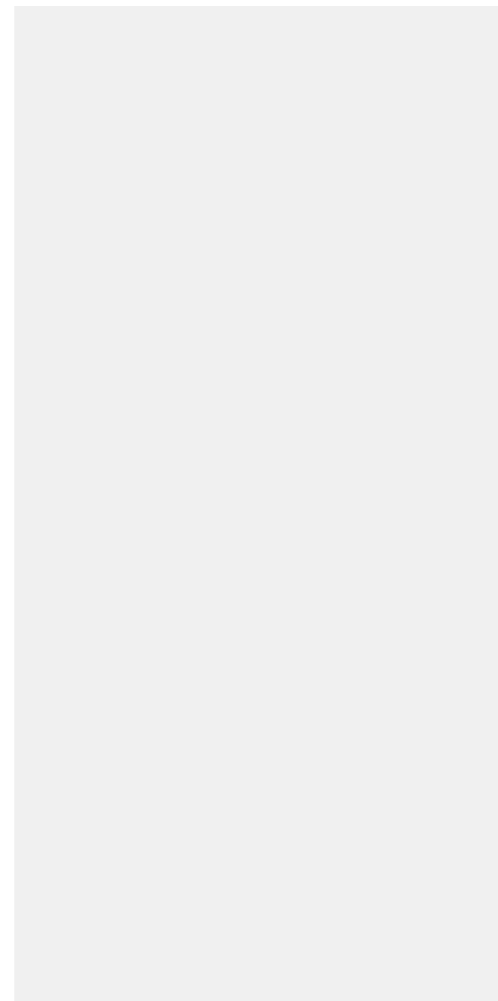
# UTSTÄLLNINGSLOKALER

## SHOWROOMS

Det som förenar dessa lokaler, oavsett om de används för att visa mode, sportbilar eller sällsynta viner, är den atmosfär som arkitekturen skapar.

Det estetiska samspelet mellan golv och väggar införlivar även säljpunkter och belysning i en harmonisk dialog.

*Whether they be they for displaying haute couture, sports cars or rare, precious wines, their unifying feature is the atmosphere that architecture is capable of creating. The aesthetic counterpoint between floors and walls also involves merchandising features and lighting displays, in a harmonious dialogue.*





## HOTELL OCH RESTAURANGER

Livets njutningar erbjuds allt oftare i påkostade lokaler som präglas av arkitektonisk kreativitet. Dessa mötesplatser kan erbjuda visuella upplevelser utöver de kulinariska. Den individuellt utformade miljön runt borden ger upphov till en uttrycksfull stämning. Golvet bidrar med toner, strukturer och kulörer som hänför, definierar och skapar särprägel.



## HOTELS & RESTAURANTS

*The finer things in life increasingly provide privileged spaces for architectural creativity and meeting and gathering places can now add visual pleasure to those of the palate. Each individual surrounding offers an expressive force to the dining table, resting on surfaces where tones, textures and colours combine to charm, define and distinguish.*





## SPA CENTER *SPA CENTRES*

I VÅRA NYA TEMPEL FÖR VÄLBEFINNANDE ÄR DET VISUELLA INTRYCKET OCH DEN EMOTIONELLA UPPLEVELSEN EN VIKTIG DEL AV ERBJUDANDET. DIALOGEN MED VATTNET GER DESSUTOM EXTRA KREATIV KRYDDA. HÄR FÖRENAS ANTIKENS KULTUR MED MODERNA OCH ORIGINELLA UTTRYCKSSÄTT. YTORNAS CHARM LIGGER I DERAS HARMONI, BÅDE I TAKTILA OCH VISUELLA TERMER.

*NEW TEMPLES OF WELLBEING MAKE THE VIEW AND EMOTIONAL INVOLVEMENT AN ESSENTIAL PART OF WHAT IS ON OFFER. WITH AN ADDED CREATIVE EXERCISE: ITS DIALOGUE WITH THE WATER. THE ANTIQUE CULTURE OF SPA CENTRES COMBINES WITH HIGHLY ORIGINAL PATHS. THE HARMONY OF THE SURFACES IS AT THE ROOT OF THEIR CHARM, TACTILE AS WELL AS VISUAL.*





## **BOYTOR** OCH INREDNING

### ***LIVING SPACES*** *WITH FURNISHINGS*



Olika nivåer inom en och samma komposition där trappor och hissar utformas för en harmonisk helhet. De estetiska valen för horisontella ytor kan även omfatta vertikala ytor och inredningen för att skapa en överraskande uttrycksfull kontinuitet.

*Different levels within the same compositional framework, with stairs and lift structures that require a new harmony within their design. The aesthetic choices for horizontal surfaces may also be incorporated vertically and in furnishings, to create surprisingly expressive continuity.*

## fördelar advantages

- För alla typer av ytor: vågräta, lodräta och innertak
  - Marmoreffekt, enfärgad eller ton i ton
  - Kan blandas till oändligt antal kulörer
  - Enkel att förbereda och applicera
  - Hög hållfasthet och motståndskraft mot nötning
  - Lämplig för bostäder och kommersiella miljöer med intensiv gångtrafik
  - För reparation av befintliga ytor eller för applicering av nya beläggningar
  - Beständig mot UV-strålning
  - Behaglig att vidröra
  - Strukturerad/kreativ, taktil effekt
  - Enkel att rengöra
  - Fulländad, modern, harmonisk
  - Enkel att underhålla
- *For all types of surface: horizontal, vertical and ceilings*
  - *Nuvolato effect, monochromatic or tone on tone*
  - *Mixable into an infinite array of colours*
  - *Simple preparation and application*
  - *High strength and resistance to abrasion*
  - *Suitable for residential surroundings and commercial areas with intense foot traffic*
  - *For repairing existing surfaces and creating new coatings*
  - *Resistant to UV rays*
  - *Pleasant to the touch*
  - *Textured/creative tactile effect*
  - *Easy to clean*
  - *Essential, modern, sober*
  - *Easy maintenance*

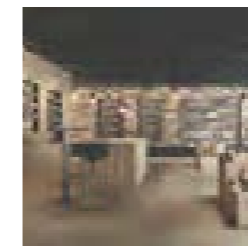
## huvudsakliga användningsområden main areas of use



**Bostäder**  
*Residential settings*



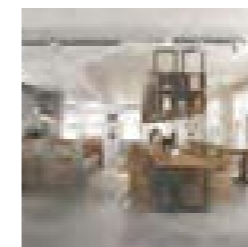
**Friskvård och spa**  
*Wellness and spa centres*



**Kommersiella miljöer**  
*Commercial areas*



**Museer och konstgallerier**  
*Museums and art galleries*



**Restauranger och hotellobbyer**  
*Restaurants and Hotel lobbies*



**Trappor**  
*Stairways*





**FÄRGKARTA**

**COLOUR  
CHART**

# ORANGE

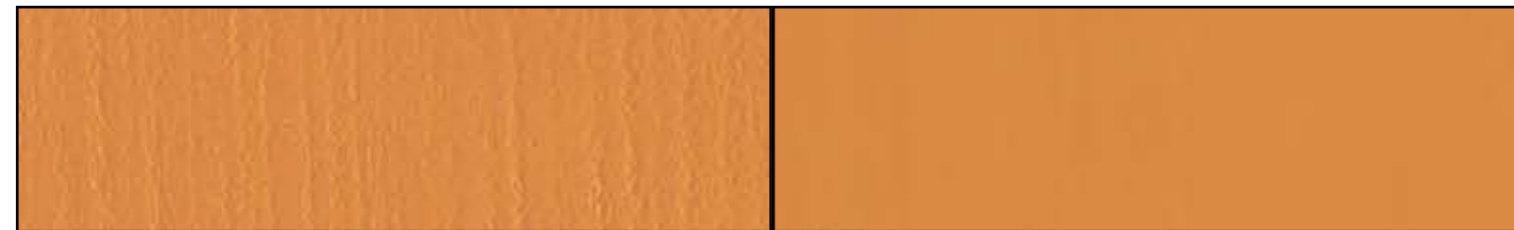
**vit bas**  
*white base*



F

SAHARA OR

W



F

GOBI OR

W



F

MOAB OR

W



F

KAVIR OR

W



F

SONORA OR

W

# ORANGE

**natturlig bas**  
*natural base*



F

SAHARA OR

W



F

GOBI OR

W



F

MOAB OR

W



F

KAVIR OR

W



F

SONORA OR

W

**BLÅ**

**vit bas**  
*white base*



F

CUBA BL

W



F

HAWAII BL

W



F

ZANTE BL

W



F

THAITI BL

W



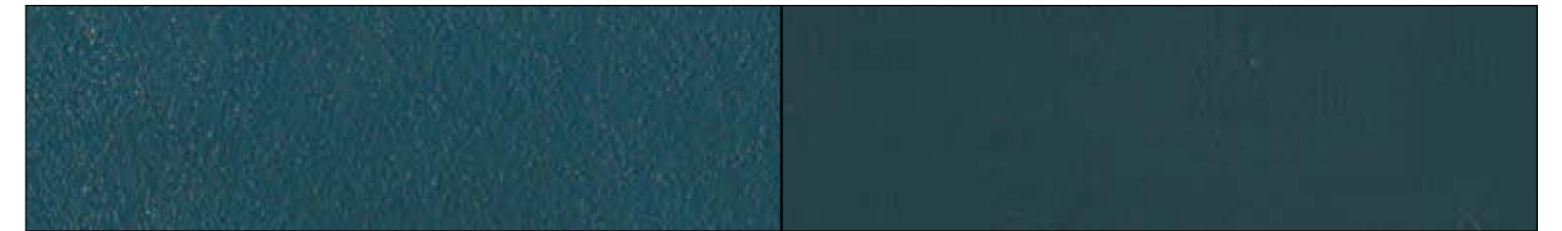
F

FIJI BL

W

**BLUE**

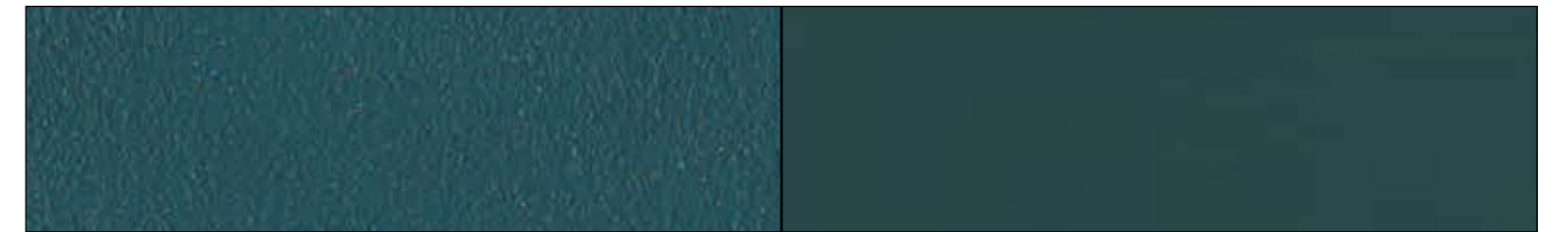
**naturlig bas**  
*natural base*



F

CUBA BL

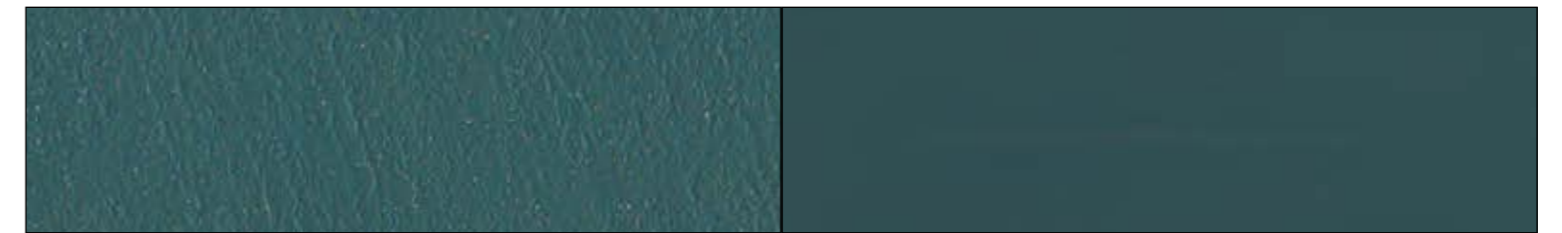
W



F

HAWAII BL

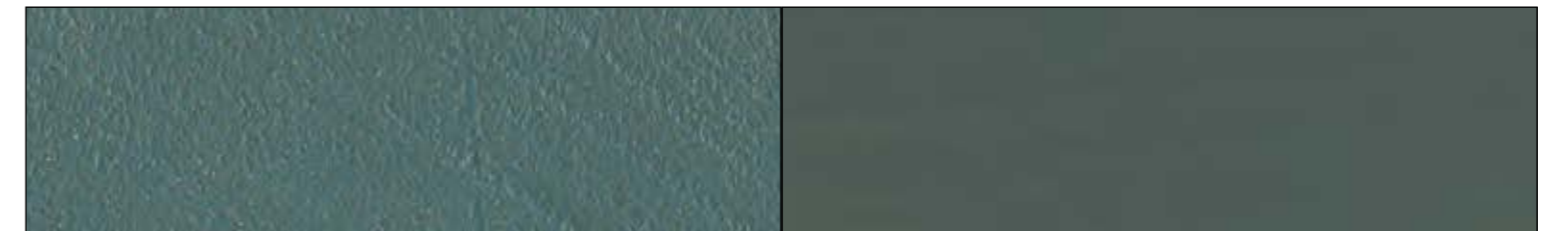
W



F

ZANTE BL

W



F

THAITI BL

W



F

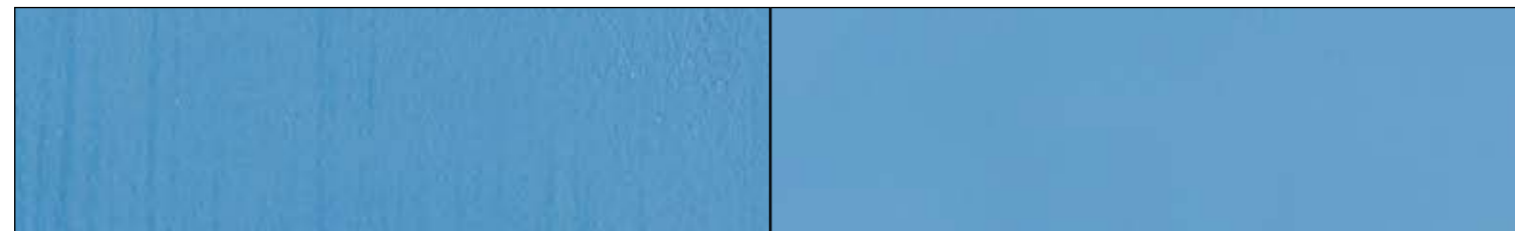
FIJI BL

W



# KOBOLTBLÅ

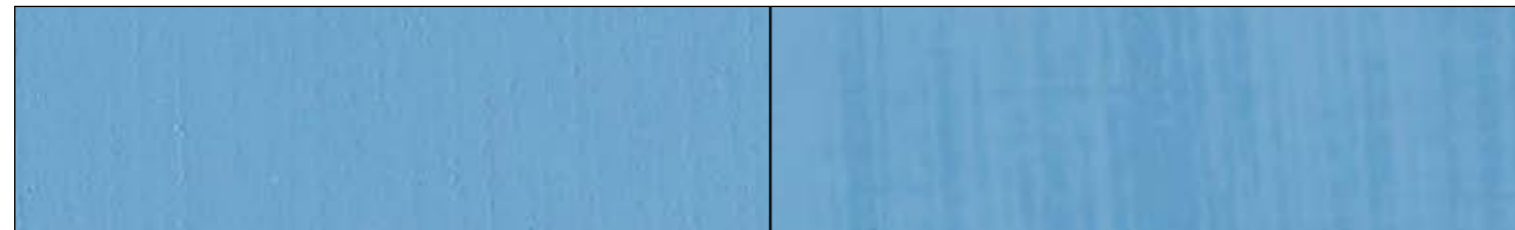
**vit bas**  
*white base*



F

VOLGA CO

W



F

DANUBIO CO

W



F

SENNA CO

W



F

RENO CO

W



F

MANHATTAN CO

W

# COBALT BLUE

**natturlig bas**  
*natural base*



F

VOLGA CO

W



F

DANUBIO CO

W



F

SENNA CO

W



F

RENO CO

W



F

MANHATTAN CO

W

GRÅ

vit bas  
*white base*



F

LONDON GR

W



F

MOSCOW GR

W



F

ZURICH GR

W



F

NEW YORK GR

W



F

BERLIN GR

W

GREY

natturlig bas  
*natural base*



F

LONDON GR

W



F

MOSCOW GR

W



F

ZURICH GR

W



F

NEW YORK GR

W



F

BERLIN GR

W



# GRÅ

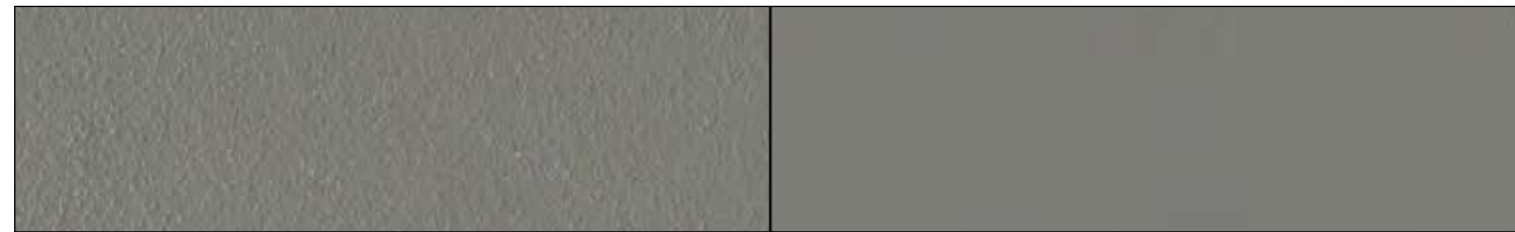
**vit bas**  
*white base*



F

BOSTON GR

W



F

PARIS GR

W



F

VENEZIA GR

W



F

SEOUL GR

W



F

MILANO GR

W

# GREY

**natturlig bas**  
*natural base*



F

BOSTON GR

W



F

PARIS GR

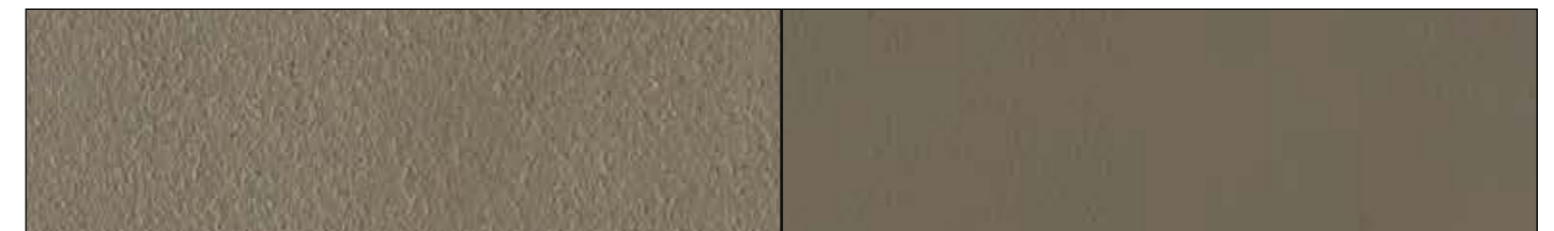
W



F

VENEZIA GR

W



F

SEOUL GR

W



F

MILANO GR

W

# BRUN

# BROWN

**vit bas**  
*white base*

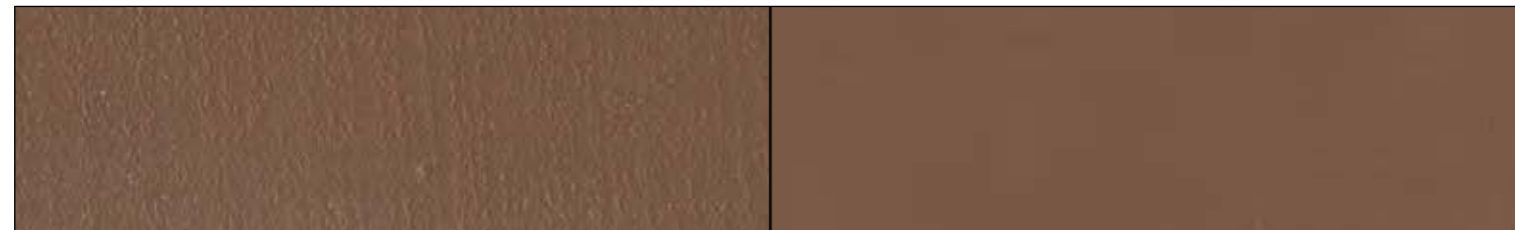
**natturlig bas**  
*natural base*



F

CHOCOLATE BR

W



F

WESTERN BR

W



F

CANYON BR

W



F

COCOA BR

W



F

SAND BR

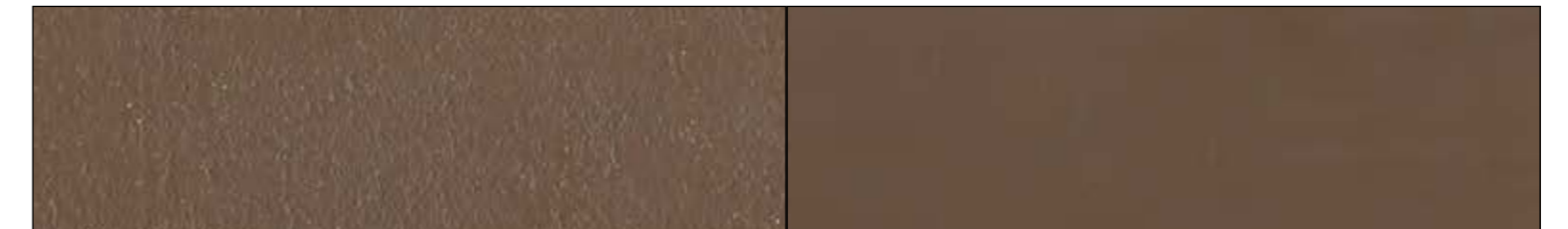
W



F

CHOCOLATE BR

W



F

WESTERN BR

W



F

CANYON BR

W



F

COCOA BR

W



F

SAND BR

W

# MÖRKBRUN

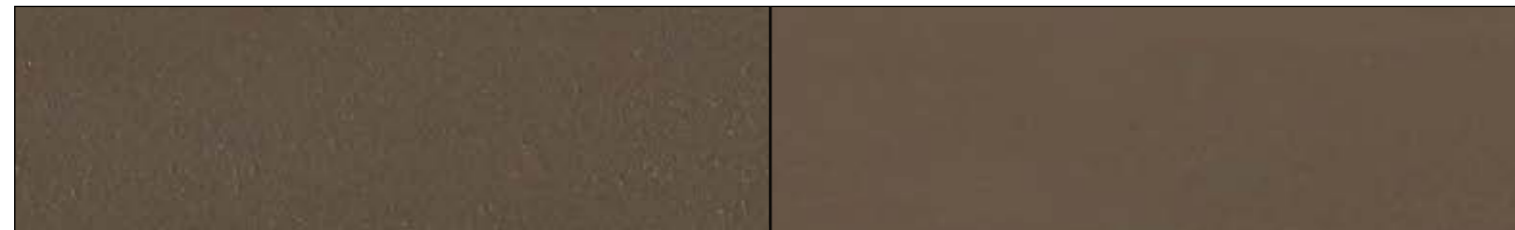
**vit bas**  
*white base*



F

MOKA DB

W



F

TOBACCO DB

W



F

COFFEE DB

W



F

PEPPER DB

W



F

KOLA DB

W

# DARK BROWN

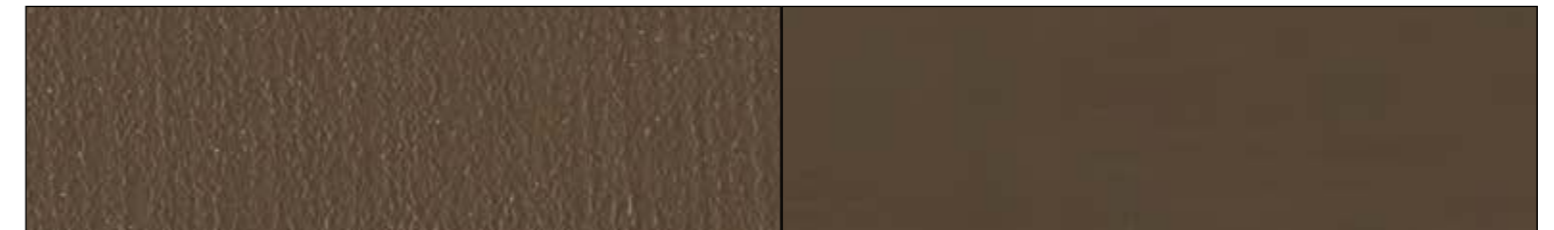
**natturlig bas**  
*natural base*



F

MOKA DB

W



F

TOBACCO DB

W



F

COFFEE DB

W



F

PEPPER DB

W



F

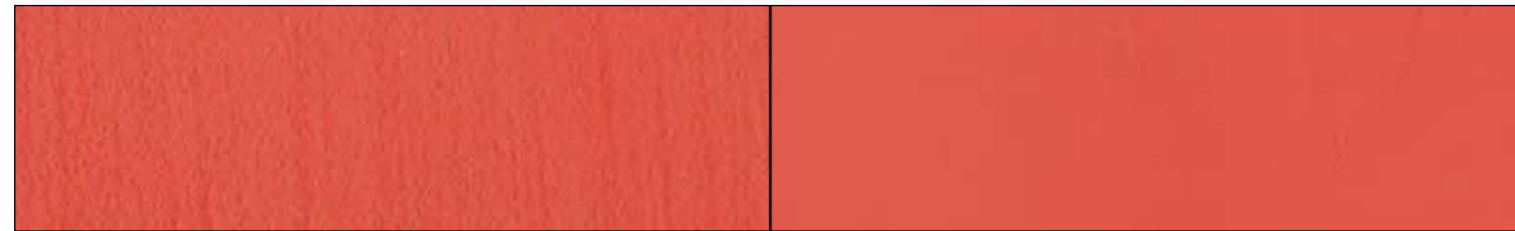
KOLA DB

W



# RÖD

**vit bas**  
*white base*



F

FUEGO RE

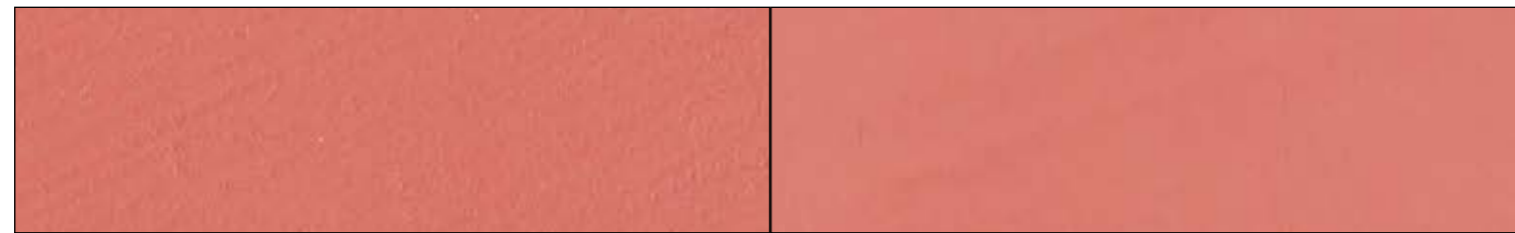
W



F

ETNA RE

W



F

JAVA RE

W



F

VESUVIO RE

W



F

TENERIFE RE

W

# RED

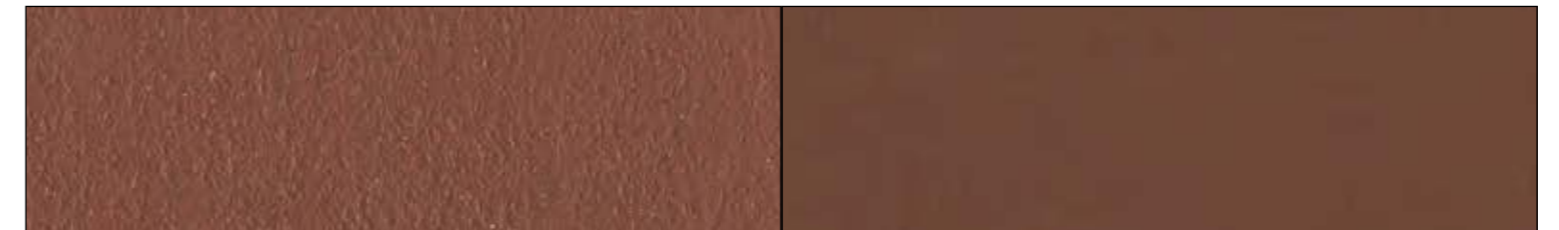
**natturlig bas**  
*natural base*



F

FUEGO RE

W



F

ETNA RE

W



F

JAVA RE

W



F

VESUVIO RE

W



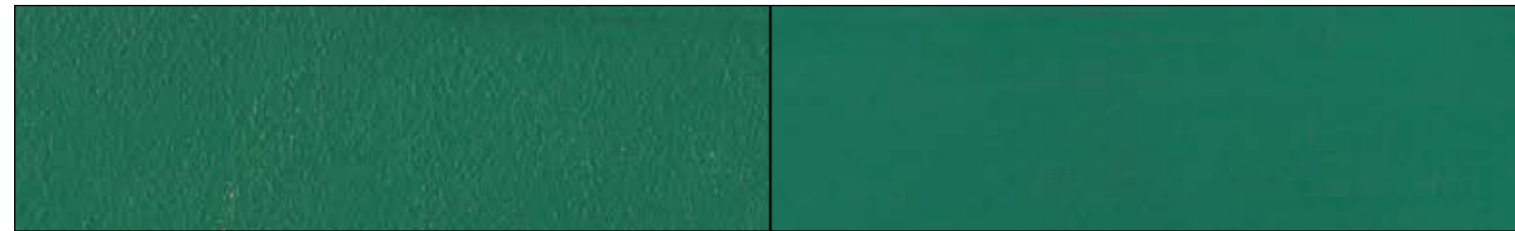
F

TENERIFE RE

W

# GRÖN

**vit bas**  
*white base*



F

BLACK FOREST GN

W



F

GREEN MOUNTAIN GN

W



F

BORNEO GN

W



F

SEQUOIA GN

W



F

BAMBOO GN

W

# GREEN

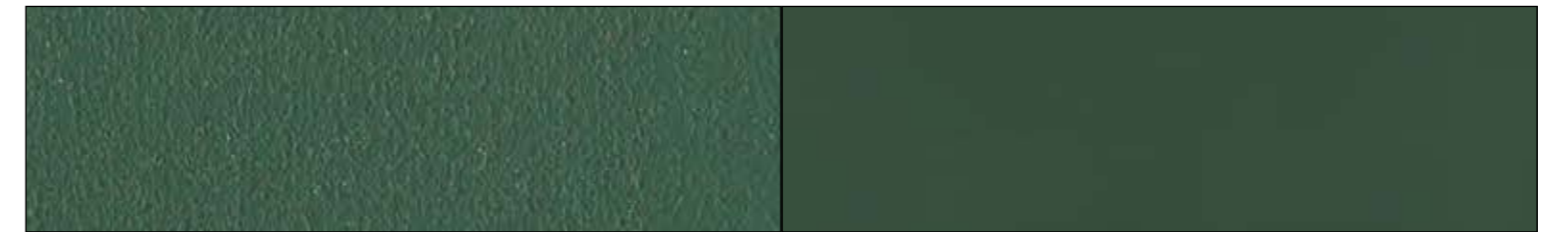
**natturlig bas**  
*natural base*



F

BLACK FOREST GN

W



F

GREEN MOUNTAIN GN

W



F

BORNEO GN

W



F

SEQUOIA GN

W



F

BAMBOO GN

W



# KLARGUL

**vit bas**  
*white base*



F

MIMOSA YL

W



F

SUNSHINE YL

W



F

SUMMER YL

W



F

VANILLA YL

W



F

MAIZE YL

W

# BRIGHT YELLOW

**natturlig bas**  
*natural base*



F

MIMOSA YL

W



F

SUNSHINE YL

W



F

SUMMER YL

W



F

VANILLA YL

W



F

MAIZE YL

W

# OCKRAGUL

**vit bas**  
*white base*



F

SAFRAN YO

W



F

SUNFLOWER YO

W



F

AMBER YO

W



F

MANGO YO

W



F

PYRAMID YO

W

# OCHRE YELLOW

**natturlig bas**  
*natural base*



F

SAFRAN YO

W



F

SUNFLOWER YO

W



F

AMBER YO

W



F

MANGO YO

W



F

PYRAMID YO

W



**REFERENSER**

***REFERENCES***





A



B



C



A



B

**A B**  
**Showroom IDW ITALIA**  
**(Chiavazza - Biella - Italien)**  
IDW ITALIA Showroom  
(Chiavazza - Biella - Italy)





**A**  
**Rivendita Simonetti (Civitanova Marche – Macerata – Italien)**  
Simonetti dealer (Civitanova Marche - Macerata - Italy)

**B**  
**Rivendita Vallati (Castel Del Piano – Grosseto – Italien)**  
Vallati dealer (Castel Del Piano - Grosseto - Italy)





**A B**  
**Specification Centre "Mapei World"**  
**(London – Storbritannien)**  
"Mapei World" Specification Centre  
(London - UK)



**A B C**  
**Petrof Gallery**  
**(Hradec Kralove – Tjeckien)**  
Petrof Gallery  
(Hradec Kralove - Czech Republic)





A



B



C

**A B C**

**Showroom Saccaro  
(Porto Alegre - Brasilien)**  
Saccaro Showroom  
(Porto Alegre - Brasil)

**D E**

**Uffici Wisma Lafarge  
(Petaling Jaya - Malaysia)**  
Wisma Lafarge offices  
(Petaling Jaya - Malaysia)



D



E



A



B



C

**A B C**  
**Zhongnan Group Office @ Shanghai**  
**(Shanghai - Kina)**  
Zhongnan Group Office @ Shanghai  
(Shanghai - China)



A



B

**A B**

**Thrudesign Wood DIY Workshop (Beijing - Kina)**  
Thrudesign Wood DIY Workshop (Beijing - China)





A



B



C

**A B C**  
Museo della Scienza e della Tecnologia  
"Leonardo Da Vinci" (Milano - Italien)  
"Leonardo Da Vinci" Museum of Science  
and Technology (Milan - Italy)



**A**  
**Galleria d'Arte Moderna e  
Contemporanea  
(Republiken San Marino)**  
Modern and Contemporary Art Gallery  
(Republic of San Marino)



**B**



**C**

**B C**  
**Museo del Carnevale di Sciacca  
(Sciacca – Agrigento – Italien)**  
Sciacca Carnival Museum  
(Sciacca - Agrigento - Italy)



**A B**

**Ristorante "A Mano" (Athen - Grekland)**  
"A Mano" restaurant (Athens - Greece)





**A B**  
**Ristorante Oyster Fish**  
**(Termoli – Campobasso – Italien)**  
Oyster Fish Restaurant  
(Termoli - Campobasso - Italy)



**A B C**  
**Park Zaryadye (Moskva – Ryssland)**  
Park Zaryadye (Moscow - Russia)





**A B C**

**Santa Barbara Eco Beach Resort  
(Ponta Delgada - Portugal)**  
Santa Barbara Eco Beach Resort  
(Ponta Delgada - Portugal)





A



B



C



D

**A B C D**  
**Santa Barbara Eco Beach Resort**  
**(Ponta Delgada - Portugal)**  
Santa Barbara Eco Beach Resort  
(Ponta Delgada - Portugal)

**A B C D**

**Hotel Ristorante "Villa Natia"**  
**(Mottola – Taranto – Italien)**  
"Villa Natia" Restaurant Hotel  
(Mottola - Taranto - Italy)





A



B



C

**A B C**  
**Hotel Ristorante "Villa Natia"**  
**(Mottola - Taranto - Italien)**  
"Villa Natia" Restaurant Hotel  
(Mottola - Taranto - Italy)





A



B



C



A

**White Exclusive Suites & Villas (Lagoa – Portugal)**  
White Exclusive Suites & Villas (Lagoa - Portugal)

