

# ***Mapecontact Release***

**DOUBLE-SIDED ADHESIVE BAND FOR THE REMOVABLE  
INSTALLATION OF RESILIENT AND TEXTILE FLOOR COVERINGS**



# Mapecontact Release

Double-sided adhesive band for the removable installation of resilient and textile floor coverings

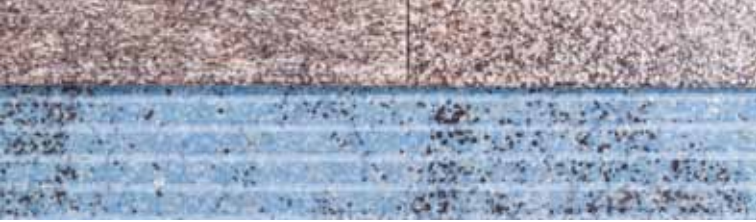


## WHAT IS IT...

**Mapecontact Release** is a double-sided adhesive band used to temporarily bond resilient and textile floor coverings. The two sides of the band have different adhesiveness to guarantee a good bond for the floor covering while allowing it to be easily removed without leaving traces of adhesive on the substrate.

1. Existing ceramic flooring to be protected
2. Floor covering (**sheets**) installed with **Mapecontact Release**
3. Floor covering (**tiles/planks**) installed with **Mapecontact Release**





## APPLICATION INSTRUCTIONS - Step 1





## INSTALLATION OF MAPECONTACT RELEASE H 50 mm EDGING BAND AND MAPECONTACT RELEASE H 750 mm ROLL

1. Apply the **Mapecontact Release** edging band along the walls and around doors and openings. Do not remove the protective film. Place jointed ends together and trim them to suit so that there are no overlaps in the **Mapecontact Release** edging band.
2. While pressing down slightly on the roll, unroll the **Mapecontact Release** in the direction the new floor covering is to be installed.
3. Overlap adjacent strips if possible and massage the surface well before trimming the overlap with a hook knife. The roll of **Mapecontact Release** may overlap the edging band as long as it is trimmed to suit.
4. Alternatively, apply the product by butting adjacent strips together (make sure there are no overlaps).  
*Note: the side with the strongest adhesive is protected by a protective liner and must face upwards when applied.*
5. Apply the last strip of **Mapecontact Release** starting from the wall. Use a hook knife again to trim any overlaps.

## APPLICATION INSTRUCTIONS - Step 2A





## INSTALLATION OF FLOOR COVERING (SHEETS)

1. Roll out the sheets/rolls over the surface and trim to suit.
2. Fold in half in the direction of the longest side.
3. Peel off the protective liner from the **Mapecontact Release** roll and edging band up to the fold in the floor covering.
4. Cut off the protective liner to leave a strip around 10 cm wide from the fold in the floor covering.
5. Fold this strip under the fold in the floor covering.
6. Apply the first half of the floor covering (make sure there are no bubbles or waves on the surface) and massage/roll the surface working sideways.
7. Fold back the second half of the floor covering and remove the rest of the protective liner. Slowly place the floor covering into position, massage/roll the surface and trim around the edges to suit.

## APPLICATION INSTRUCTIONS - Step 2B



1



2



3



4



5



6



7





## INSTALLATION OF FLOOR COVERING (TILES AND PLANKS)

1. Mark the position of the first row of tiles/planks on the protective liner of the **Mapecontact Release**.
2. Place a straight edge along the line marked on the liner and cut it along the edge of the straight edge. This straight line will act as a reference for the first row of tiles or planks.
3. Pull off the protective liner diagonally along the straight edge.
4. Cut the protective liner after uncovering the area where the first row of tiles or planks is to be applied.
5. Apply the tiles/planks along the reference line and press them down well.
6. Gradually remove the protective liner to uncover the area where the next tiles or planks are to be applied
7. Apply the tiles or planks while gradually removing the remaining liner. Once all the flooring has been installed, massage/roll the entire surface.

## APPLICATION INSTRUCTIONS - Step 3





## REMOVING THE FLOOR COVERING

1. Cut the floor covering into strips with a hook knife without damaging the surface underneath.
2. Separate the **Mapecontact Release** edging band from the surface underneath starting from one of the corners.
3. Remove the floor covering together with the **Mapecontact Release** by pulling it parallel to the ground.

and FINALLY...





### ● Technical documentation

From the technical area menu you can view the technical documentation divided per product lines and type of document.

**HEAD OFFICE**  
**MAPEI S.p.A.**  
Via Cafiero, 22 - 20158 Milan  
Tel. +39-02-37673.1  
Fax +39-02-37673.214  
Internet: [www.mapei.com](http://www.mapei.com)  
E-mail: [mapei@mapei.it](mailto:mapei@mapei.it)



/mapeispa

