

## AREAS OF APPLICATION

- + Sewage treatment plants
- + Culverts, basins etc. in contact with sewage

## SYSTEM DESCRIPTION

The system consists of products who give a pore free and durable surface which is well suited for treatment of concrete structures that is in contact with sewage.

The system is applied in a thickness of approx. 2 mm, creating a chemical resistant surface which protects the concrete against decay. The system is delivered in a grey or green color, or as transparent.

The product does not contain organic solvents and is practically odour free during application. The system ensures quick installation and use, and the final product poses no health or environmental hazard to the user.

## PROPERTIES

The system is well suited for substrates with exacting requirements for flooring with:

- + Waterproof, pore free and seamless surfaces
- + Durable against wear from cleaning
- + Good resistance against aggressive chemicals

## SYSTEM STRUCTURE

### Substrate / Pre-treatment

The substrate should be pre-treated by grinding or blast cleaning and should be dry, clean and free of dust, oil, grease etc.

The system is well suited for use on concrete and other cement based substrates.

### 1 Porefilling

**Mapepoxy Cem S** – epoxy-based mortar

Three-component epoxy-based mortar which is applied with a trowel/tray and smooth to remove minor imperfections.

### 2 Priming

**Mapeprimer M** – for damp surfaces, difficult substrate

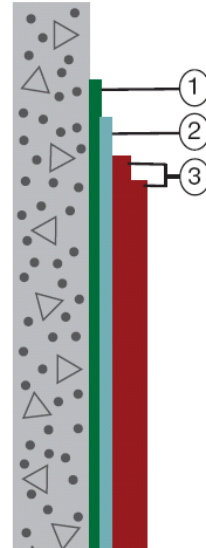
Two-component solvent free epoxy primer. Dressed lightly with dry sand if the interval time is greater than 24 hours (depending on the type of primer and the conditions for use)

### 3 Top coat

**Mapecoat KB** – transparent chemical resistant epoxy or

**Mapecoat KB** – pigmented chemical resistant epoxy.

Solvent free epoxy applied with brush, roller or sprayer in a minimum of 2 layers.



### Other connected products

**Glassfibre mat** – For lamination

**Mapepoxy BI** – Force transferring injection in cracks

**Resfoam 1KM** – Polyurethane injection for waterproofing

**Purgel** – Polyurethane injection for waterproofing



## OTHER USEFUL INFORMATION

- + The Technical Data Sheet (TDS) and Safety Data Sheet (SDS) can be found at [www.mapei.no](http://www.mapei.no)
- + Working descriptions