

SYSTEM SOLUTIONS GUIDE

# HOSPITALITY



<b>INTRO</b> .....	02
<b>EXTERIOR</b>	
Below-Grade Waterproofing: Positive-Side Construction .....	06
Exterior Veneer: Ceramic or Stone Tile.....	07
Hotel Facade: Protective Coating.....	08
Valet/Transportation Area: Ceramic or Stone Tile.....	09
Parking Deck: Heavy-Duty Vehicular Traffic.....	10
Balcony Floor: Ceramic or Stone Tile .....	11
Balcony Floor: Ceramic or Stone Tile .....	12
Roof Deck over Occupied Space: Ceramic or Stone Tile .....	13
Roof Deck: Ceramic or Stone Tile.....	14
<b>INTERIOR</b>	
Tile-over-Tile Walls: Large Gauged Porcelain Tile Panels/Slabs.....	15
Lobby: Ceramic or Stone Tile .....	16
Hotel Coffee Shop: Decorative Topping.....	17
Hotel Restaurant Area: Ceramic or Stone Tile .....	18
Hotel Kitchen/Restaurant Area: Quarry or Ceramic Tile.....	19
Hallway/Lobby Area: Double-Stick Carpet.....	20
Elevator Cab Floor: Tile or Stone over Steel.....	21
Guest Room: LVT Plank/Tile .....	22
Guest Room Floor: Ceramic or Stone Tile.....	23
Bathroom Shower Renovation: Ceramic or Stone Tile.....	24
Bathroom Shower Renovation: Luxury Vinyl Tile .....	25
<b>SUSTAINABILITY AND HOSPITALITY</b> .....	26
<b>PRODUCT INDEX</b> .....	27

## Hospitality Settings

Hospitality settings are where design professionals can really show their talent. Bold color choices, mixes of traditional and contemporary elements, and multiple finishes can turn a functional space into a showplace.

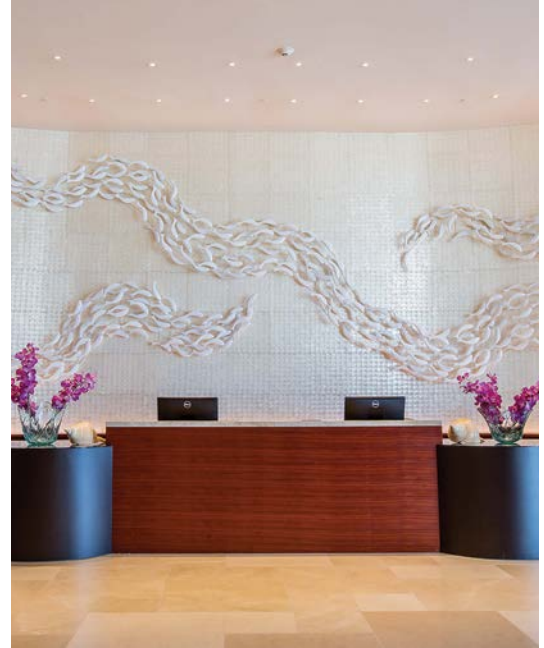
---

MAPEI's installation products can help turn your vision into a reality.

---

At the same time, hospitality settings can cause challenges for architects who are tasked with making it all work together. MAPEI's installation products can help turn your vision into a reality, and our experience with complicated installations and out-of-the-box challenges can be the difference between a job well done and a recurring headache.

MAPEI is with you at every stage of construction –from waterproofing the structure below grade, to providing concrete additives for fast-track construction, to offering levelers, adhesives and grouts. The earlier you involve us in the process, the more seamlessly our solutions can work together to support your design. This handy design guide can point you in the right



direction. If you get stuck, we're just a phone call or an email away.

In addition to MAPEI's extensive selection of installation products, we offer finishes for demanding applications. Toppings, coatings and wear surfaces round out our extensive portfolio. This gives you peace of mind in utilizing one vendor from start to finish, with proven system solutions to real-world challenges.

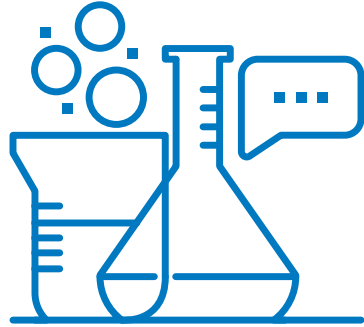


# Full-Breadth Product Lines

MAPEI has supplied residential and major commercial projects with total installation solutions for tile and stone, floor coverings and decorative concrete as well as concrete restoration and admixtures for more than 85 years.

- 1** Tile & Stone Installation Systems
- 2** UltraCare Stone, Tile, Grout Care and Maintenance Solutions
- 3** Floor Covering Installation Systems
- 4** Products for Sports Flooring
- 5** Products for Wood Flooring
- 6** Concrete Restoration Systems
- 7** Products for Structural Strengthening
- 8** Products for Underground Construction (UTT)
- 9** Admixtures for Concrete
- 10** Waterproofing Systems
- 11** Cement Additives
- 12** Products for the Marine Industry\*  
*\*USA & Puerto Rico only*
- 13** Cementitious and Resin Flooring Systems





## Innovative Research & Development

Worldwide, a considerable amount of MAPEI employees are involved in the development of new technologies and product innovations, keeping our customers at the forefront of the construction industry. The company has taken the additional initiative of focusing its R&D efforts on environmentally sustainable solutions.

To remain on the cutting edge of innovation, MAPEI reinvests revenues into researching and developing new products and technologies. This corporate priority has produced such innovations as:

- Easy Glide Technology™, which offers extreme ease of application, yielding a buttery consistency that reduces fatigue during installation.
- *Ultrabond ECO*® product formulations beginning in the 1980s with extremely low emissions of volatile organic compounds (VOCs) for improved indoor air quality.
- FastTrack Ready® products, which reduce the required steps of an installation and/or perform more quickly than current methods.
- High-Transfer Technology™ products, which offer superior mortar-wetting properties to promote improved mortar transfer between the tile and the substrate. This technology helps to deliver ultimate coverage to maximize bond strength performance and is ideal for lippage control system applications.

## Quality Control and Efficient Manufacturing

In North America, most MAPEI facilities have been certified to ISO 9001 quality management and ISO 14001 environmental management standards. Our products are produced according to exacting standards, strictly adhering to process and procedural guidelines with documented compliance. This rigid production format is vigilantly followed to ensure that every product is produced uniformly from batch to batch.

### Powerful, Efficient and Sustainable Manufacturing

Cutting-edge production technology is used in MAPEI's production facilities, where the entire manufacturing process is optimized by continual quality control, from raw materials to final packaging.

MAPEI's production statistics are impressive: 86 production facilities in 35 countries on five continents. Along with the 27,900 tons of finished products that are manufactured at our production facilities every day, we receive just as many tons of raw materials to keep our sites supplied around the world.

MAPEI's production efforts are reflected through optimization of logistics costs, close proximity to our customers, and a guarantee of maximum efficiency of production processes while respecting the environment.



## Warranty Program

To bring it all together, MAPEI complements the industry's best products with simple, easy-to-understand requirements for comprehensive warranties – allowing you to build systems within desired warranty timeframes.

MAPEI's advanced systems give you the built-in confidence provided by superior in-field technical support and the Best-Backed<sup>SM</sup> warranties in the business.



## Professional Support

### Knowledgeable Sales Force

MAPEI offers the largest, most highly trained sales force within the industry to serve your needs for product application/installation recommendations. Its representatives are focused on supporting you with product knowledge, product demonstrations, product information, marketing support materials and other relevant tools to help you generate business.

### Technical Expertise

An in-house Technical Services Product Support Team responds to customers' telephone inquiries with answers to installation challenges in real time. In addition, Regional Technical Services Representatives provide field support, including jobsite visits, product training and advice on product selection.

Call us at 1-800-992-6273 (flooring, U.S. and Puerto Rico), 1-888-365-0614 (non-flooring, U.S. and Puerto Rico) or 1-800-361-9309 (Canada).

### Customer Service Plus

MAPEI's standards for customer service are best-in-class. Our leadership includes such service innovations as:

- Customer-friendly, efficient processes
- One-call resolution
- Employee commitment to effective customer dialog

Call us at 1-800-42-MAPEI (1-800-426-2734).







Tile or stone on the outside of a building can give a classic feel or make the building a contemporary masterpiece. It also can provide energy savings, heat reflectance or absorption, as well as ease of maintenance. Properly installed tile and stone veneers can potentially last for the life of the building.

**Issues:** Rain, freeze/thaw shrinkage and expansion

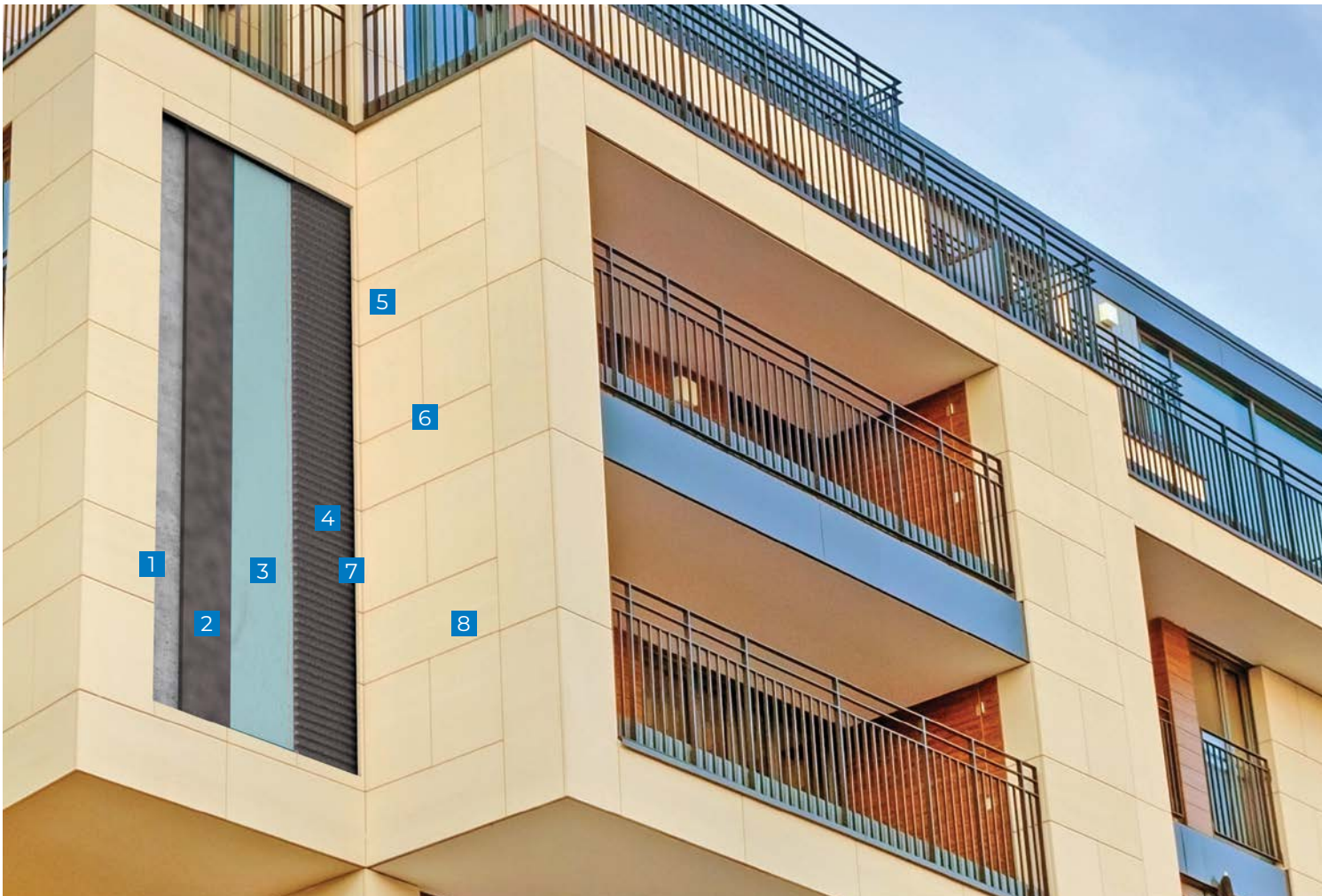
**Solutions:** Installation materials that do not contribute to efflorescence, highly deformable freeze/thaw-resistant setting materials, soft joints

- 1 Concrete
- 2 *Modified Mortar Bed* with slurry bond coat
- 3 *Mapelastic AquaDefense* or *Mapelastic Turbo*
- 4 *Granirapid* System
- 5 Ceramic tile or stone
- 6 *Ultracolor Plus FA* or *Ultracolor Plus Max*
- 7 *Mapesil T Plus*
- 8 *UltraCare* Penetrating Plus Stone, Tile & Grout Sealer or Penetrating SB Stone, Tile & Grout Sealer

## EXTERIOR

### EXTERIOR VENEER

CERAMIC OR STONE TILE



# EXTERIOR

## HOTEL FACADE

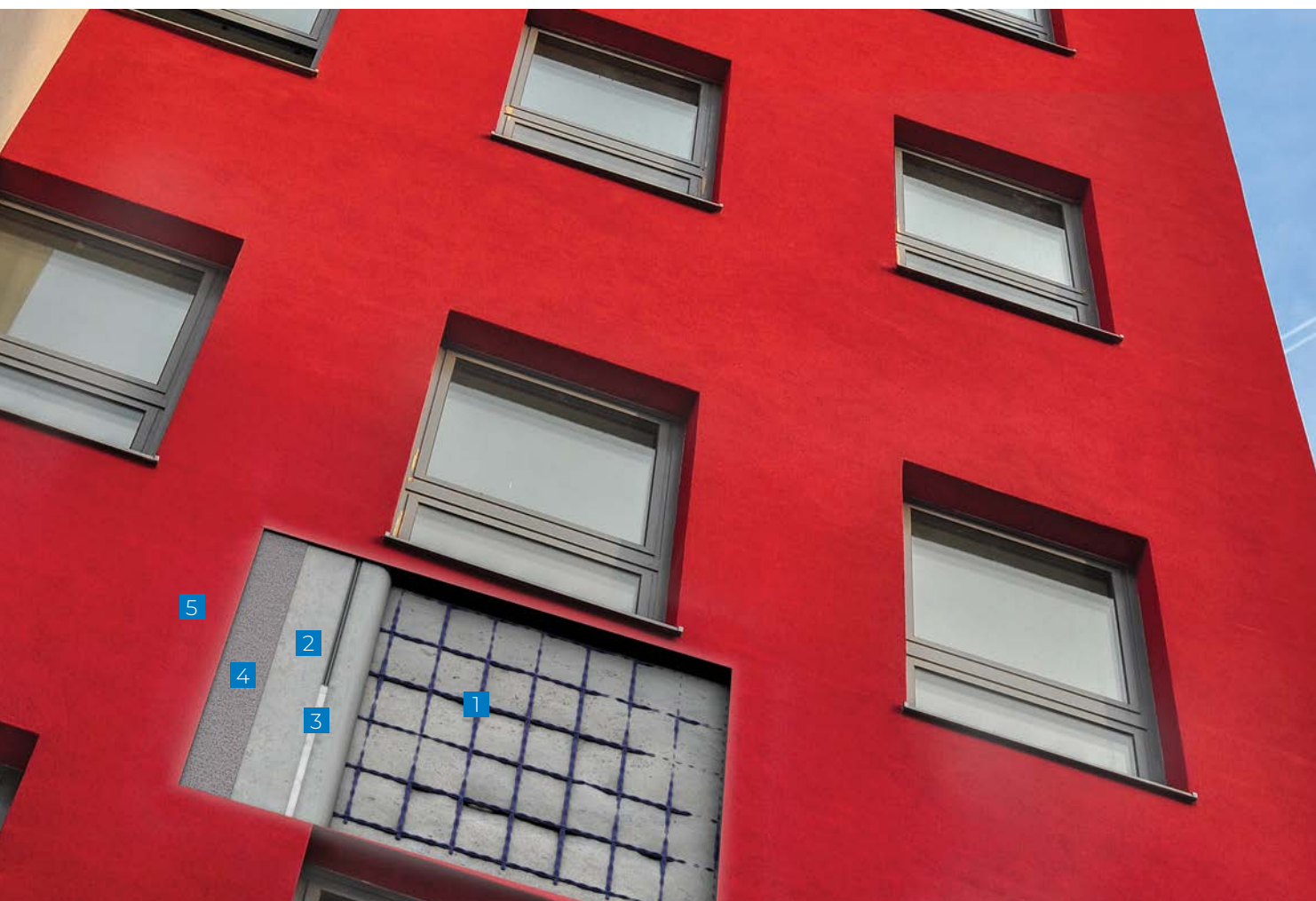
### PROTECTIVE COATING

Exterior facades face many challenges. They are subjected to intense sunlight, temperature variations, carbon dioxide, water, salt and wind. MAPEI's *Elastocolor* products are designed to address these conditions in an unlimited array of colors.

**Issues:** Need for an attractive, durable exterior coating that seals out water/salt and is easy to clean

**Solutions:** *Elastocolor Primer AR* and *Elastocolor Coat* are formulated as a system to waterproof, seal, protect and beautify.

- 1 *Mapefer 1K*
- 2 *Planitop XS* or *Planitop 12 SR*
- 3 *Mapeflex PI FT*
- 4 *Elastocolor Primer AR*
- 5 *Elastocolor Coat*



## EXTERIOR

### VALET/ TRANSPORTATION AREA

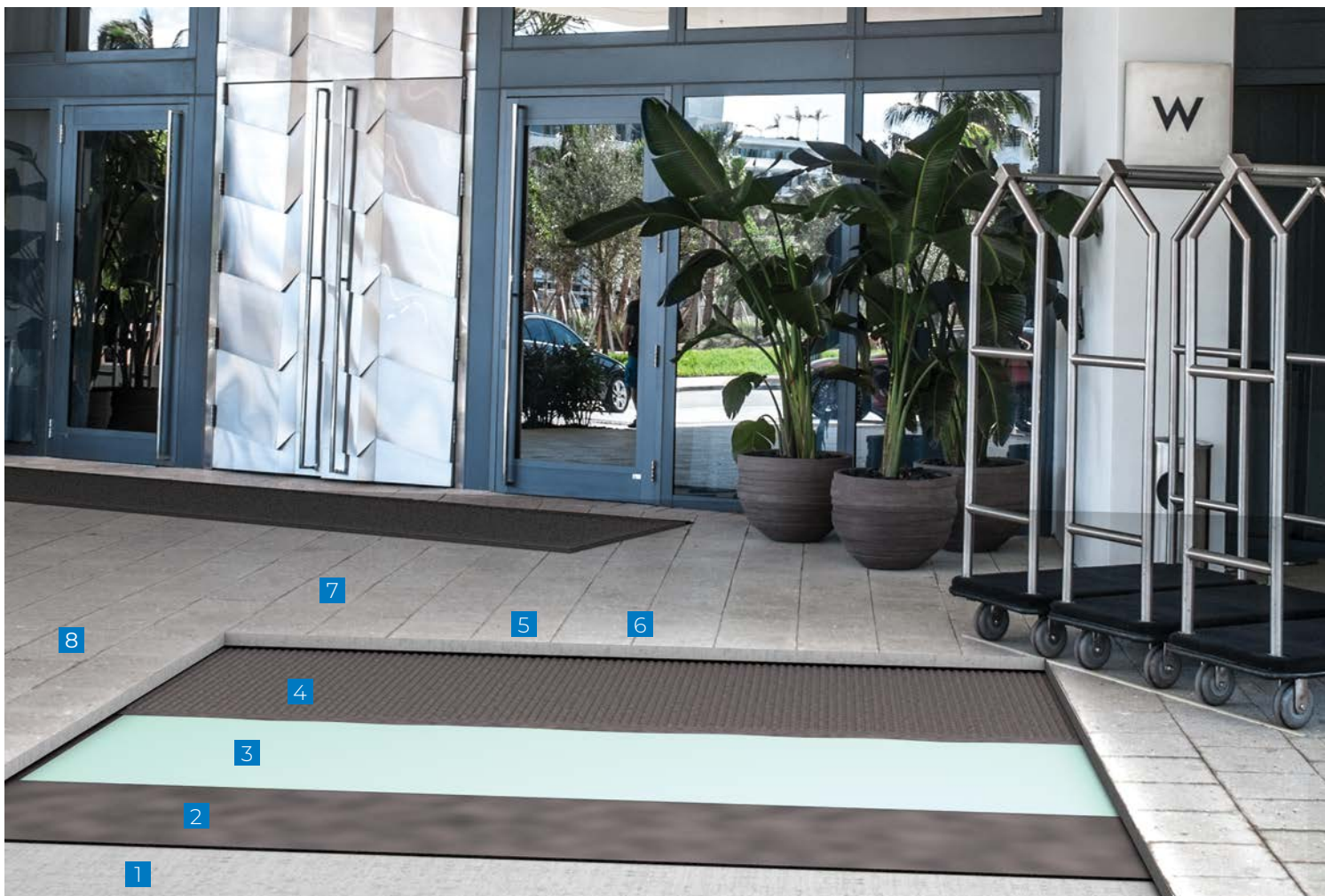
CERAMIC OR  
STONE TILE

Valet and transportation areas are every customer's first impression of the business and some of the most challenging to tile. Vehicular traffic means heavy rolling loads and turning wheels. Ice removal in cold climates adds the challenge of salts, caustics and other chemicals. Make sure that your products are up to the challenge by using MAPEI's system of problem-solvers for exterior applications.

**Issues:** Vehicular traffic, weather, salts, efflorescence

**Solutions:** Freeze/thaw-stable mortars, durable grouts and installation materials that do not contribute to efflorescence

- 1 Concrete
- 2 *Modified Mortar Bed* with slurry bond coat
- 3 *Mapelastic AquaDefense* or *Mapelastic Turbo*
- 4 *Granirapid* System
- 5 Ceramic tile or stone
- 6 *Ultracolor Plus FA* or *Ultracolor Plus Max*
- 7 *Mapesil T Plus*
- 8 *UltraCare* Penetrating Plus Stone, Tile & Grout Sealer or Penetrating SB Stone, Tile & Grout Sealer



# EXTERIOR

## PARKING DECK

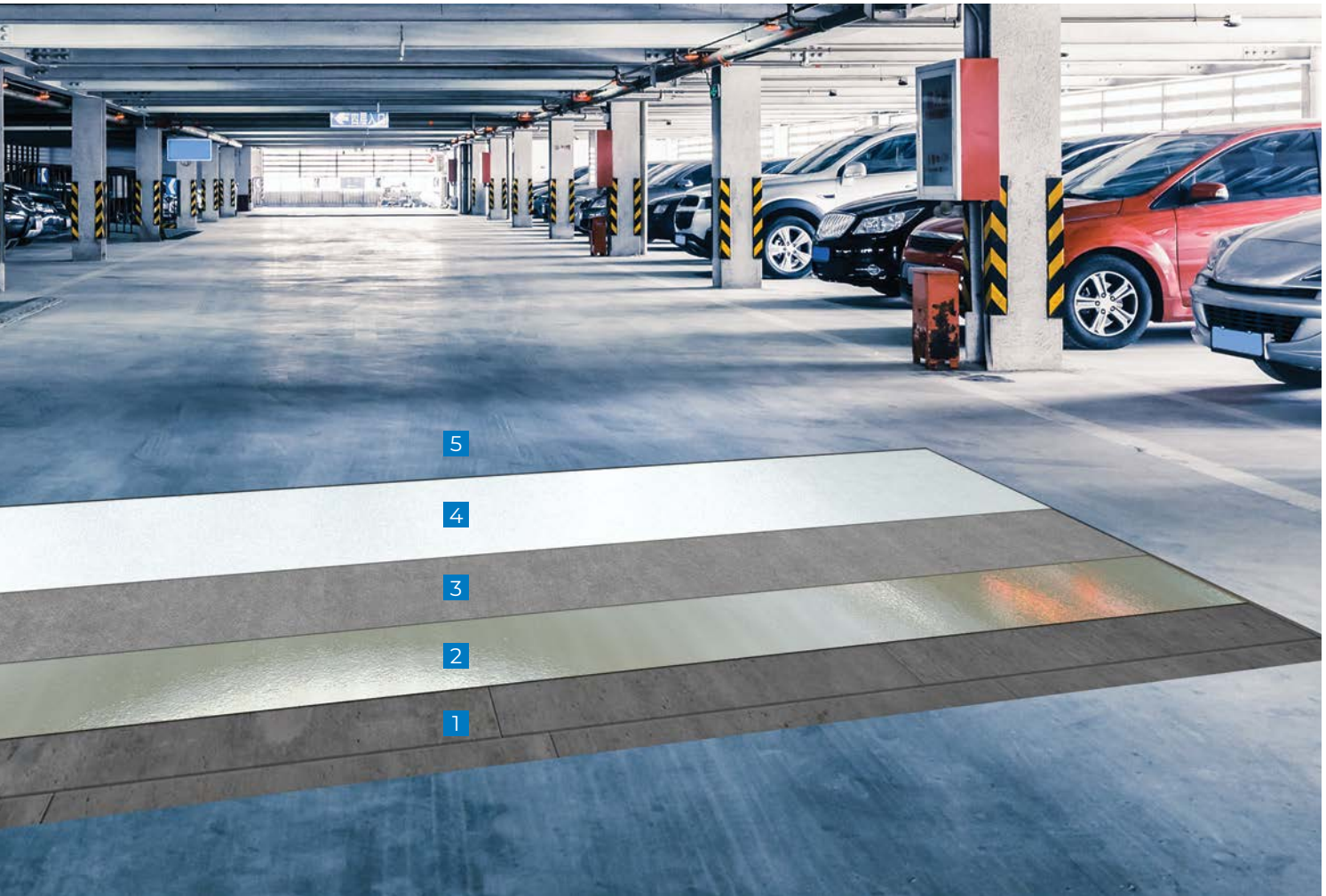
SYSTEM FOR HEAVY-DUTY VEHICULAR TRAFFIC

Parking decks and other exterior, pedestrian and vehicular traffic areas require rugged products developed specifically for the unique conditions that they experience. MAPEI's *Mapefloor* family of products is engineered for parking decks and the demands of their installations.

**Issues:** Wheel traffic; low-speed turns

**Solution:** A highly bonded system of products protecting the substrate and resisting the force of rolling loads and turns

- 1 Existing concrete
- 2 *Mapefloor PU Primer* or *Primer SN*
- 3 *Mapefloor PU 400 FC*
- 4 *Mapefloor Finish 415 NA*
- 5 *Mapefloor Finish 450* with sand broadcast



5

4

3

2

1

# EXTERIOR

## BALCONY FLOOR

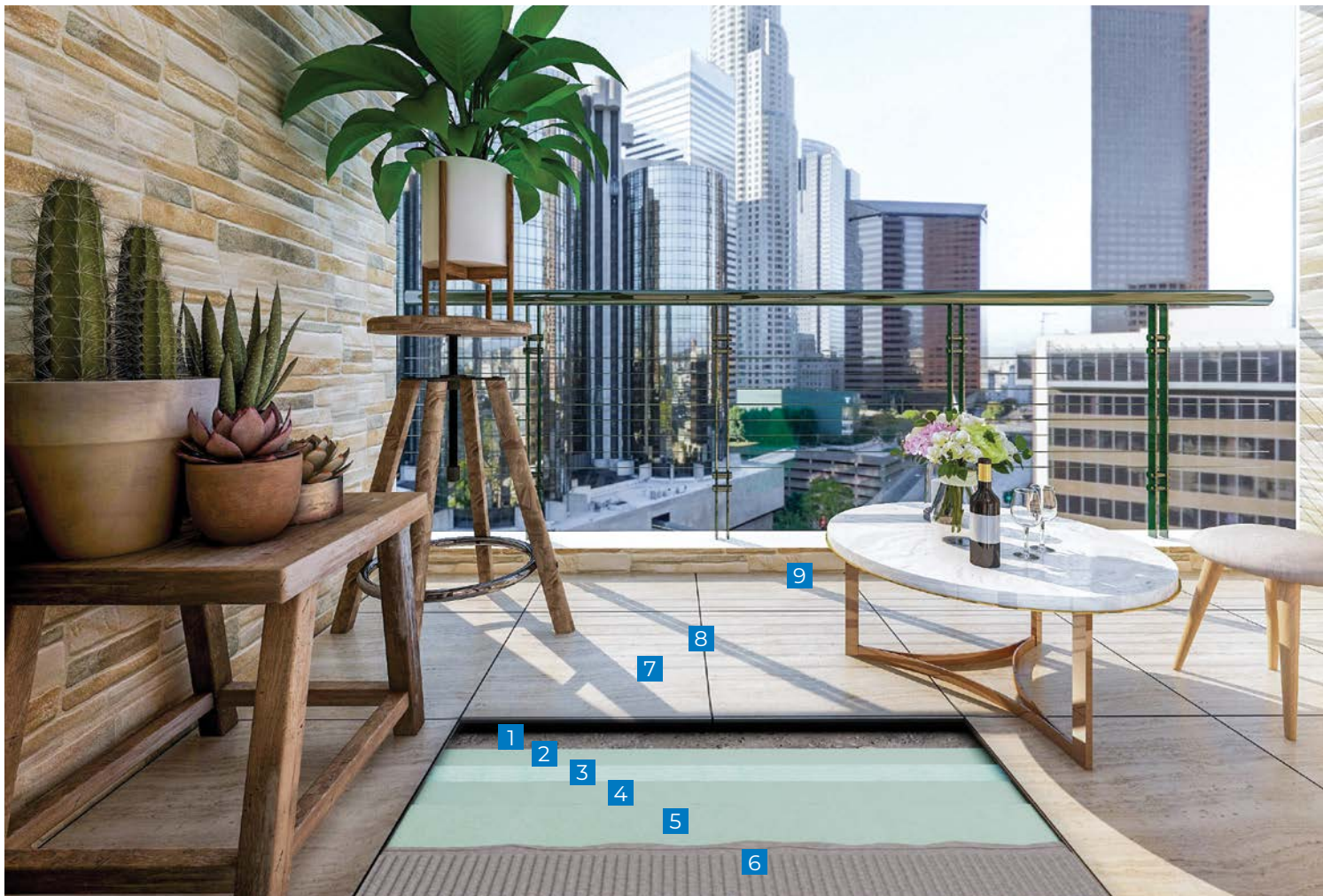
CERAMIC OR  
STONE TILE

Balconies provide additional living space in the urban condo or apartment setting, and the desire to utilize this space is trending upward. This requires premier systems using a direct-bond solution to withstand the rigors of exterior conditions from freeze/thaw conditions to wide temperature swings, along with addressing rain and snow challenges while protecting the occupied or unoccupied space below.

**Issues:** Exposure to such weather elements as rain, sun, frost, ice and wind, with the need to protect the space below

**Solution:** A system of premium mortar, waterproofing and grout approved for freeze/thaw conditions, temperature swings and water exposure conditions

- 1 Concrete
- 2 *Planiseal CR1*
- 3 *MAPEI LMR Fabric*
- 4 *Planiseal CR1*
- 5 16/20 mesh sand broadcast to refusal
- 6 *Keraflex Super*
- 7 Tile
- 8 *Ultracolor Plus FA* or *Ultracolor Plus Max*
- 9 *Mapesil T Plus*



# EXTERIOR

## BALCONY FLOOR

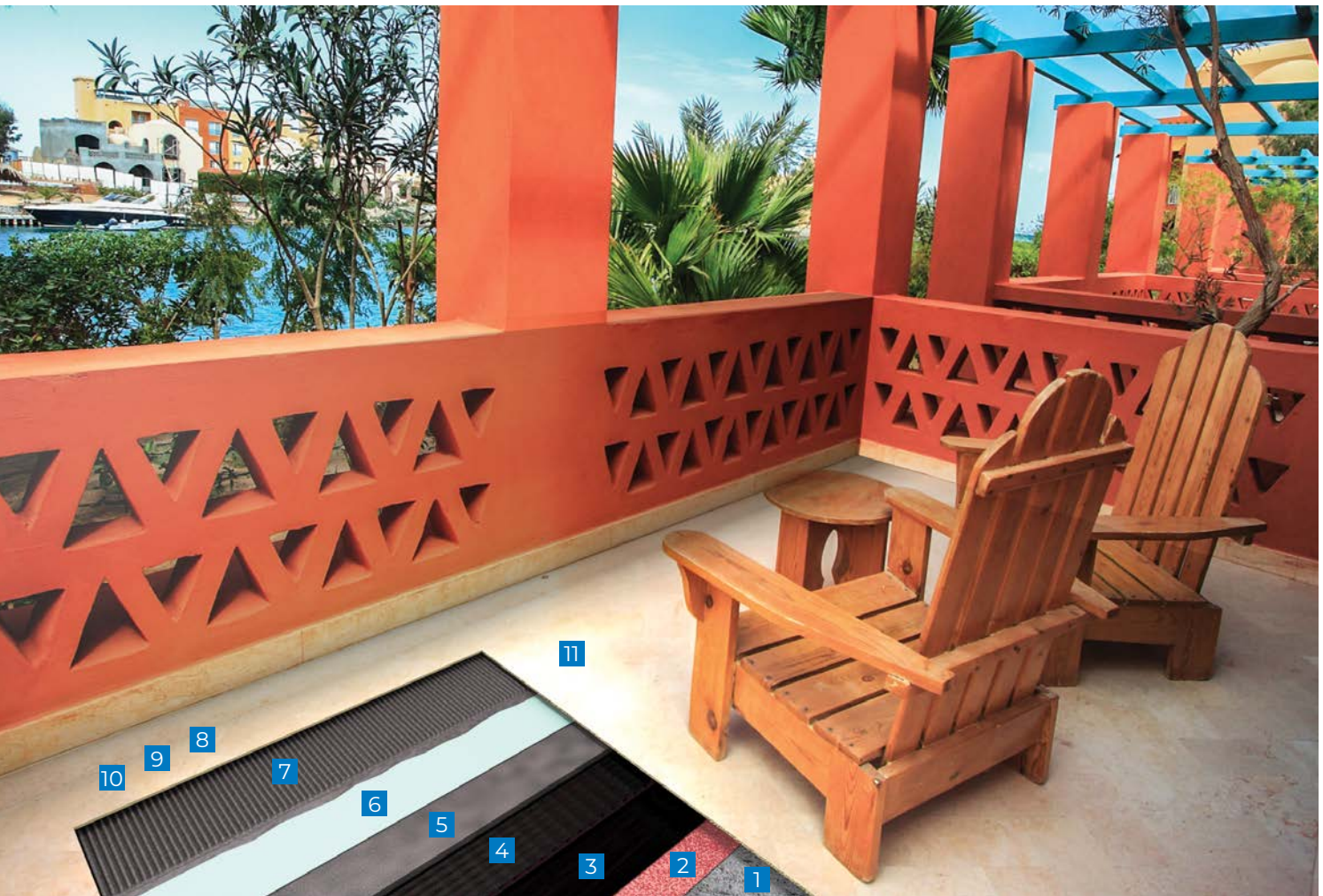
CERAMIC OR STONE TILE

Balconies can be quite challenging environments, for tile or stone installations over occupied or unoccupied space. It is key to have a primary waterproofing system rated for the application. MAPEI offers a system solution from the substrate up with our *Planiseal Membrane SA* waterproofing system topped with freeze/thaw-stable mortars and high-performance, efflorescence-resistant grouts. Best of all, this system may qualify for MAPEI's Best-Backed<sup>SM</sup> System Warranty, giving architects peace of mind when specifying MAPEI products.

**Issues:** Weather, salts, efflorescence

**Solutions:** Freeze/thaw- and submersion-resistant mortars, efflorescence-resistant grouts and the *Planiseal Membrane SA* waterproofing system

- 1 Concrete
- 2 *Mapebond 700*, *Mapebond 710* or *Mapebond 720*
- 3 *Planiseal Membrane SA*
- 4 *Mapedrain 30* or *Mapedrain 50*
- 5 *Modified Mortar Bed*
- 6 *Mapelastick Turbo* or *Mapelastick AquaDefense*
- 7 *Kerabond T / Keralastick System*, *Kerabond/Keralastick System* or *Granirapid System*
- 8 Ceramic tile or stone
- 9 *Ultracolor Plus FA* or *MAPEI Flexcolor CQ*
- 10 *Mapesil T Plus*
- 11 *UltraCare Penetrating Plus SB Stone & Porcelain Tile Sealer* or *Penetrating SB Stone, Tile & Grout Sealer* or *Penetrating Plus Stone, Tile & Grout Sealer*



## EXTERIOR

### ROOF DECK OVER OCCUPIED SPACE

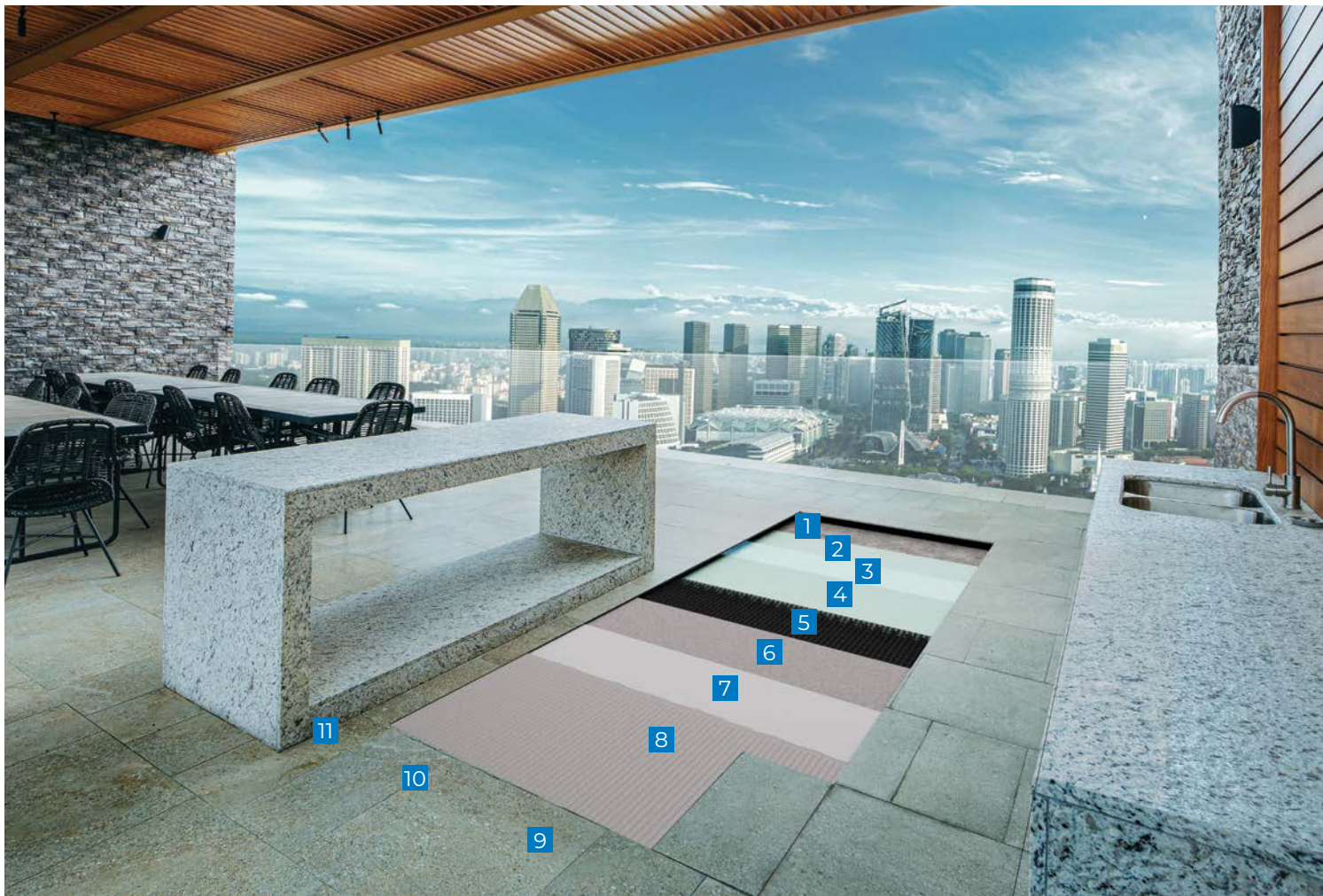
CERAMIC OR  
STONE TILE

Installing roof decks is gaining in popularity as an extension of outdoor living space. This requires premier systems to withstand the rigors of exterior conditions from freeze/thaw conditions to wide temperature swings, along with addressing rain and snow challenges.

**Issues:** Exposure to such weather elements as rain, sun, frost, ice and wind, with the need to protect the space below

**Solution:** A system of premium mortar, mortar bed and waterproofing approved for freeze/thaw conditions, temperature swings and water exposure

- 1 Concrete
- 2 *Planiseal CRI*
- 3 *MAPEI LMR Fabric*
- 4 *Planiseal CRI*
- 5 *Mapedrain 35*
- 6 *Modified Mortar Bed* with reinforcement
- 7 *Mapelastic Turbo* or *Mapelastic AquaDefense*
- 8 *Keraflex Super*
- 9 Tile
- 10 *Ultracolor Plus FA* or *Ultracolor Plus Max*
- 11 *Mapesil T Plus*



# EXTERIOR

## ROOF DECK

CERAMIC OR  
STONE TILE

Roof decks can be quite challenging environments, which make them perfect for tile or stone installations. They are buffeted by weather and likely have to be both a walking surface and the roof over occupied space below. It is key to have a primary waterproofing system rated for the application. MAPEI offers a system solution from the substrate up with our *Planiseal Membrane SA* waterproofing system topped with freeze/thaw-stable mortars and high-performance, efflorescence-resistant grouts. Best of all, this system may qualify for MAPEI's Best-Backed<sup>SM</sup> System Warranty, giving architects peace of mind when specifying MAPEI products.

**Issues:** Weather, salts, efflorescence

**Solutions:** Freeze/thaw- and submersion-resistant mortars, efflorescence-resistant grouts and the *Planiseal Membrane SA* waterproofing system

- 1 Concrete
- 2 *Mapebond 700, Mapebond 710 or Mapebond 720*
- 3 *Planiseal Membrane SA*
- 4 *Mapedrain 30 or Mapedrain 50*
- 5 *Modified Mortar Bed*
- 6 *Mapelastic 315 or Mapelastic AquaDefense*
- 7 *Kerabond T / Keralastic System, Kerabond/Keralastic System or Granirapid System*
- 8 Ceramic tile or stone
- 9 *Ultracolor Plus FA or MAPEI Flexcolor CQ*
- 10 *Mapesil T Plus*
- 11 *UltraCare Penetrating Plus SB Stone & Porcelain Tile Sealer or Penetrating SB Stone, Tile & Grout Sealer or Penetrating Plus Stone, Tile & Grout Sealer*





In this large emerging segment of the tile industry, very thin tiles often are used to cover existing tiles. This solution makes renovation quick and cost-effective, but it brings up the challenges of fully supporting the tiles with mortar. MAPEI is the worldwide leader in innovative solutions for gauged porcelain tile and gauged porcelain tile panels/slabs.

**Issues:** Dated tile or stone, cost of removal, mortars designed for full coverage

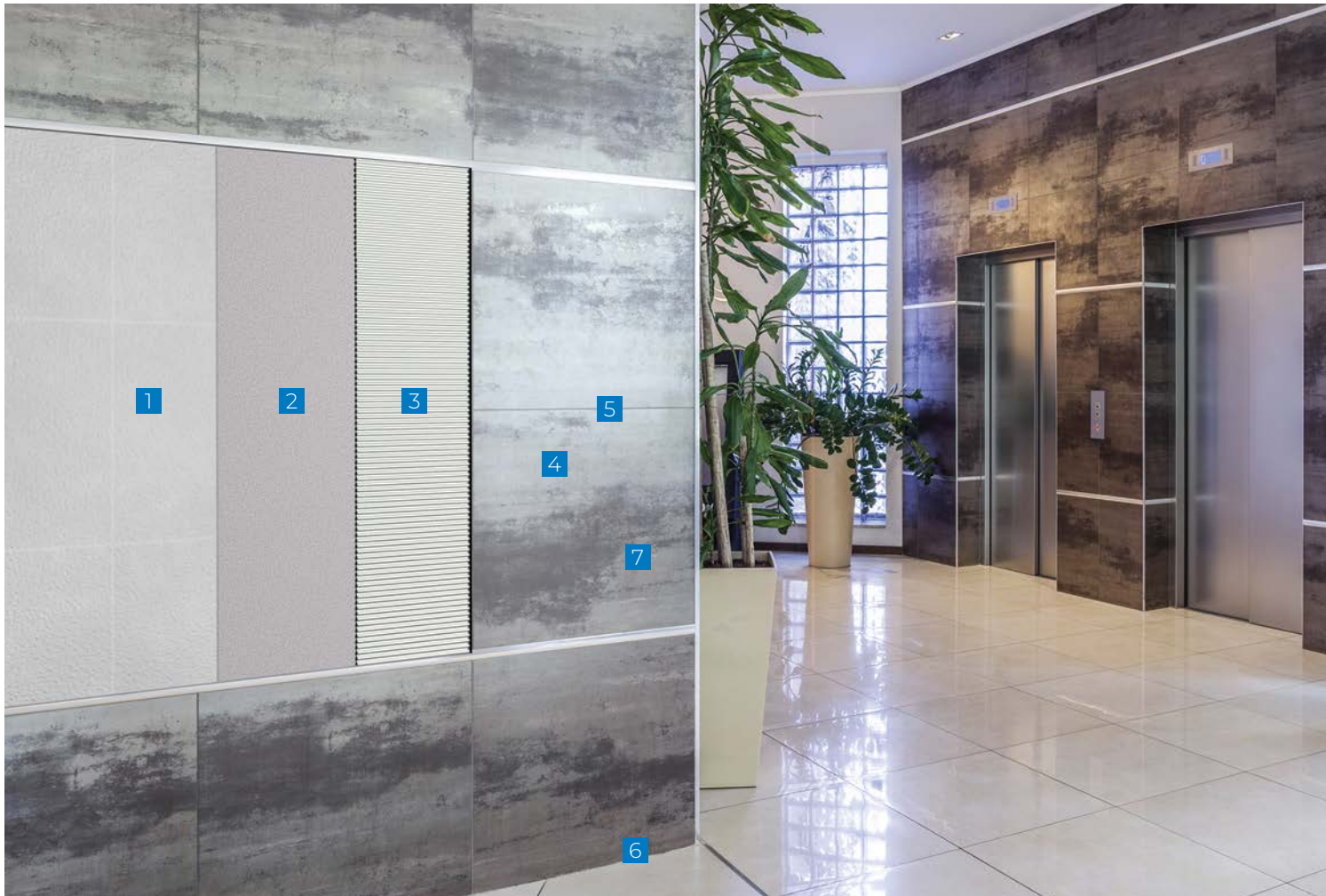
**Solutions:** Tile over tile, low cost

- 1 Existing tile
- 2 *ECO Prim Grip*
- 3 *MAPEI Ultralite S2*
- 4 Gauged porcelain tile panels/slabs
- 5 *Ultracolor Plus FA* or *Ultracolor Plus Max*
- 6 *Mapesil T Plus*
- 7 *UltraCare Penetrating Plus SB* Stone & Porcelain Tile Sealer or Penetrating SB Stone, Tile & Grout Sealer or Penetrating Plus Stone, Tile & Grout Sealer

## INTERIOR

### TILE-OVER-TILE WALLS

LARGE GAUGED PORCELAIN TILE PANELS/SLABS



# INTERIOR

## LOBBY

CERAMIC OR  
STONE TILE

A well-designed lobby should welcome not just the customer but also their suitcases, luggage carts and other rolling loads. Often, durable tile or stone is specified for lobbies, and the setting materials need to be just as rugged. Depending on the level of the lobby, noise control may also be a concern. Rest assured, MAPEI has products to mute the noise, handle the load and look great while doing it.

**Issues:** High traffic, pivot areas, traffic patterns

**Solutions:** Suitable tile and stone that provide durable long-lasting finishes

- 1 Concrete
- 2 Cleavage membrane
- 3 *Modified Mortar Bed* – reinforced
- 4 *MAPEI SM Primer*
- 5 *Mapesonic 2*
- 6 *Keraflex Super*
- 7 Ceramic tile or stone
- 8 *MAPEI Flexcolor CQ* or *Ultracolor Plus FA*
- 9 *Mapesil T Plus*
- 10 *UltraCare Penetrating Plus SB* Stone & Porcelain Tile Sealer or *Penetrating SB Stone, Tile & Grout Sealer* or *Penetrating Plus Stone, Tile & Grout Sealer*



# INTERIOR

## HOTEL COFFEE SHOP

DECORATIVE  
TOPPING

Concrete flooring is a trendy choice, but not all existing substrates are up to the task of being attractive and durable. Enter *Ultratop*, MAPEI's fast-track solution for creating a beautiful floor. Natural gray *Ultratop* is also available in white, which allows the floor to be your canvas for a variety of coloring options. Plus, the polishable version (*Ultratop SP*) provides a fine-aggregate exposed finish. All *Ultratop* products can be extended with marble aggregate for a dazzling floor per our *Ultratop Terrazzo System*.

**Issues:** Need for an aesthetic and functional upgrade of existing substrates, especially in high-traffic areas

**Solution:** *Ultratop* is specifically designed to create attractive floors that offer more than 6,000 psi (41.4 MPa) of compressive strength when fully cured.

- 1 Concrete
- 2 *Primer SN* or *Primer SN Fast*
- 3 Sand broadcast
- 4 *Ultratop* or *Ultratop SP*
- 5 *Mapecrete Finish 630* or *Mapecrete Protector FF*



# INTERIOR

## HOTEL RESTAURANT AREA

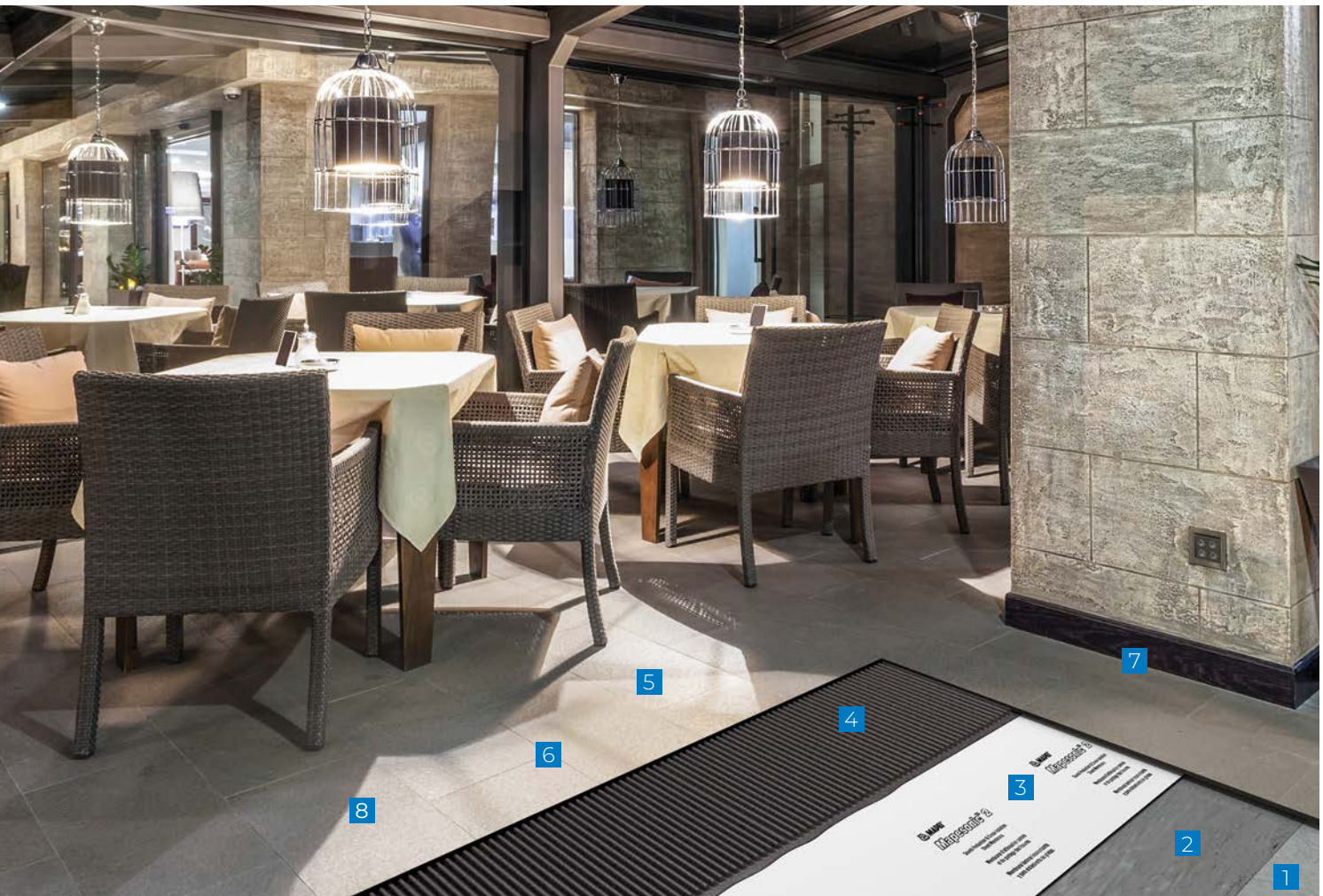
CERAMIC OR  
STONE TILE

Front-of-house installations require a rugged installation to hold up to high foot traffic and spills while coordinating with the design concept for the space. MAPEI makes grout in a wide variety of colors to fit with any decor while being easy to clean and offering rugged durability. With the correct products underneath the tile, the installation will last as long as you want it to last.

**Issues:** Chemicals, heat, staining, harsh cleaning

**Solutions:** High-strength grout and installation materials

- 1 Concrete
- 2 *MAPEI SM Primer*
- 3 *Mapeguard 2* or *Mapesonic 2*
- 4 *Kerabond/Keralastic* System or *Kerabond T / Keralastic* System
- 5 Porcelain or ceramic tile
- 6 *Kerapoxy CQ*
- 7 *Mapesil T Plus*
- 8 *UltraCare* Penetrating Plus SB Stone & Porcelain Tile Sealer or Penetrating SB Stone, Tile & Grout Sealer or Penetrating Plus Stone, Tile & Grout Sealer



While kitchen areas aren't always the most glamorous, they can be among the most challenging to install and maintain. High temperatures, the potential for spills, hygienic concerns and harsh cleaners are no match for MAPEI's problem-solvers for commercial kitchens.

**Issues:** Chemicals, heat, staining, harsh cleaning

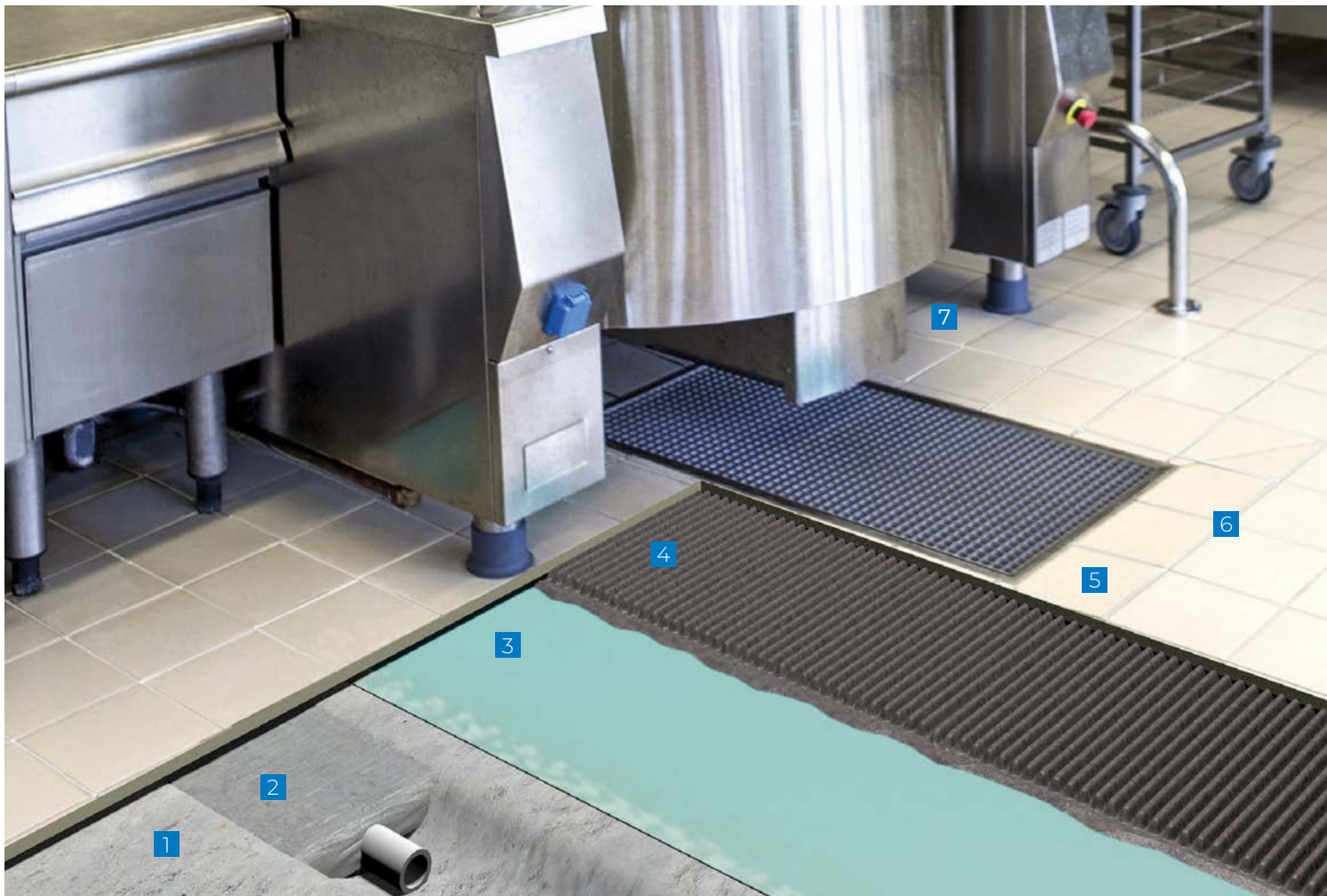
**Solutions:** Durable, chemical- and stain-resistant grout combined with rugged mortars

- 1 Concrete
- 2 *Topcem Premix*
- 3 *Mapelastic AquaDefense* or *Mapelastic Turbo*
- 4 *Kerabond/Keralastic* System or *Kerapoxy® 410*
- 5 Quarry or ceramic tile
- 6 *Kerapoxy IEG CQ*
- 7 *Mapesil T Plus*

## INTERIOR

### HOTEL KITCHEN/ RESTAURANT AREA

QUARRY OR  
CERAMIC TILE



# INTERIOR

## HALLWAY/LOBBY AREA

### DOUBLE-STICK CARPET

Double-stick carpet is a mainstay for areas with high foot traffic such as hallways and meeting rooms. MAPEI's products provide a level substrate and adhesives for installing pad and carpet. Depending on the adhesive, the installation can be permanent or releasable, easing the frequent remodeling cycles typical in hospitality settings.

**Issues:** High foot traffic, rolling carts, frequent updating

**Solutions:** High-quality adhesive, single-source products

- 1 Concrete
- 2 *Planiprep SC*
- 3 *Ultrabond ECO 811* (releasable)  
*Ultrabond ECO 220* (permanent)  
or *Ultrabond ECO 185*
- 4 Carpet pad
- 5 *Ultrabond ECO 220*  
or *Ultrabond ECO 185*
- 6 Carpet



Often an elevator provides a first impression as customers move from a parking garage to a mall or restaurant. Using beautiful, durable stone or tile in the elevators will enhance the effect of luxury long before one experiences the main event.

**Issues:** Flexibility, pivot areas, high traffic

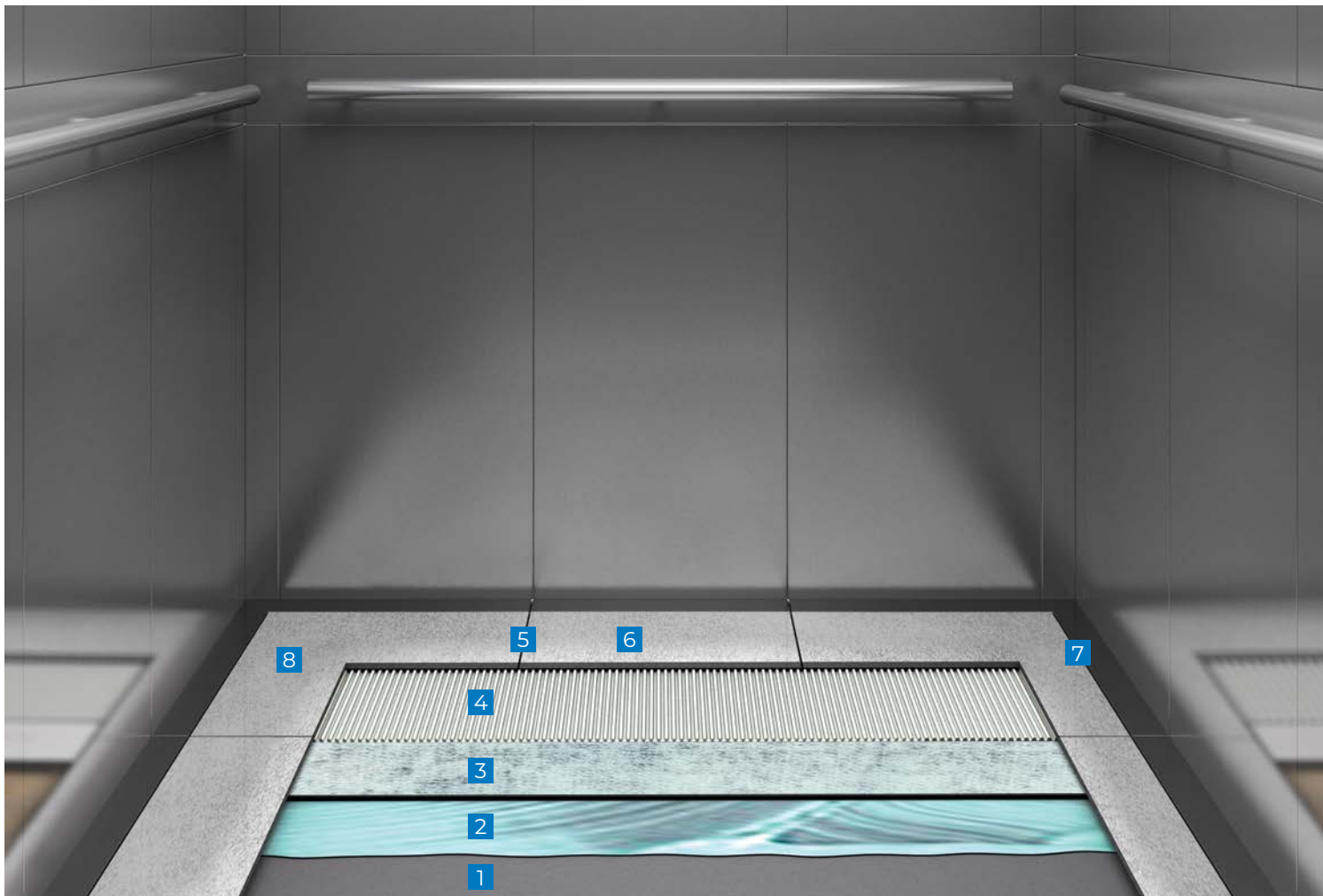
**Solutions:** Materials suitable for substrates that experience deflection. Because there are multiple methods, contact MAPEI's Technical Services Department for guidance.

- 1 Steel
- 2 MAPEI HM Primer
- 3 Mapeguard CI
- 4 Ultraflex LFT
- 5 Tile or stone
- 6 MAPEI Flexcolor CQ
- 7 Mapesil T Plus
- 8 UltraCare Penetrating Plus SB Stone & Porcelain Tile Sealer

## INTERIOR

### ELEVATOR CAB FLOOR

TILE OR STONE  
OVER STEEL



# INTERIOR

## GUEST ROOM

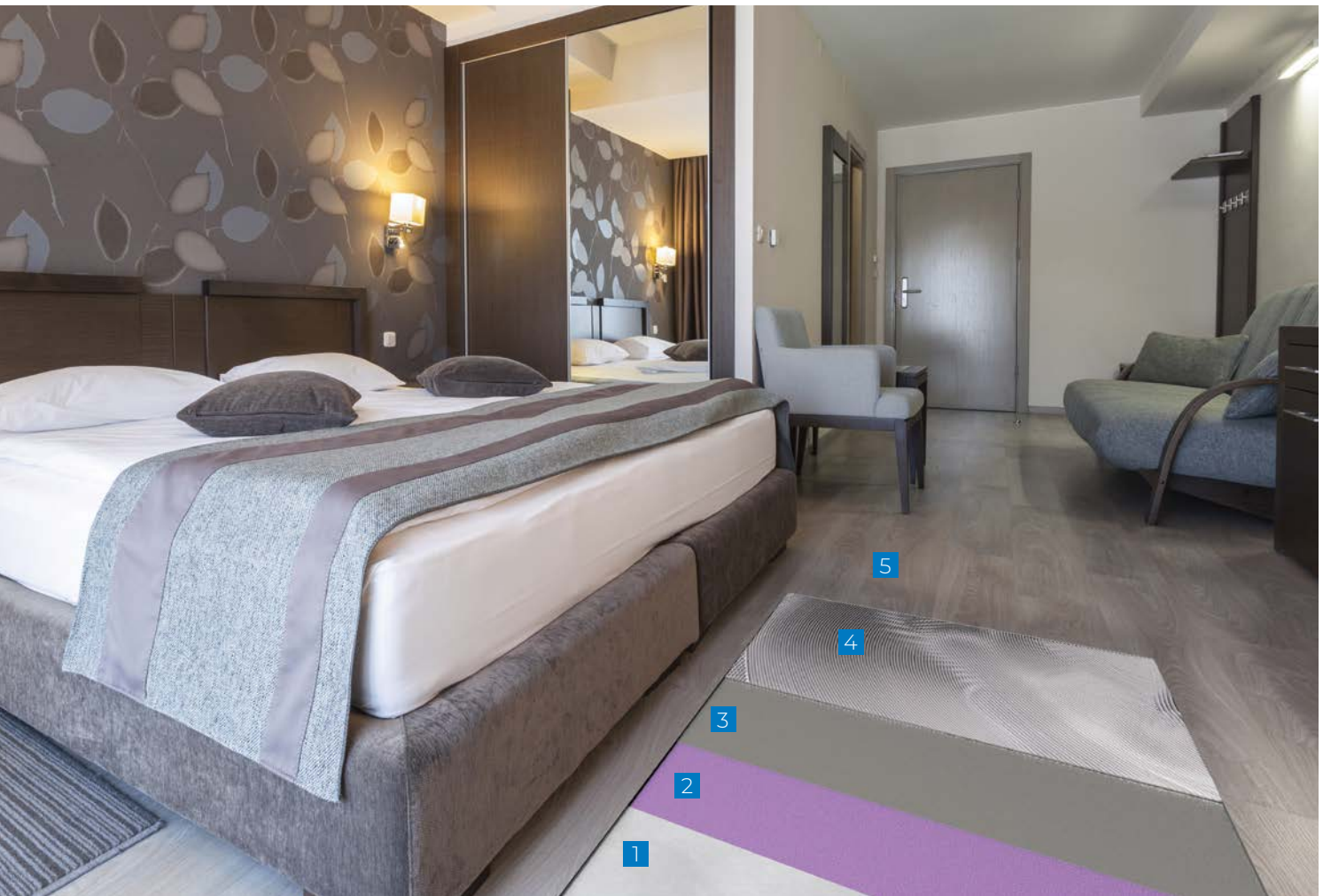
### LVT PLANK/TILE

LVT planks and tiles are increasingly used in guest rooms as low-maintenance alternatives to carpet. New products closely mimic the appearance of wood, stone and tile. As a bonus, damaged areas can be quickly and inexpensively replaced when spare tiles are available.

**Issues:** Residential traffic, furniture movement, maintenance

**Solutions:** High-quality adhesives, single-source products

- 1 Concrete
- 2 *Primer T*
- 3 *Novoplan 2 Plus*
- 4 *Ultrabond ECO 399*
- 5 Luxury vinyl plank





# INTERIOR

## GUEST ROOM FLOOR

CERAMIC OR STONE TILE

Guest rooms must combine beauty, durability and utility. Tile and stone are a great choice for bathrooms and are increasingly the flooring of choice for the entire room. The trend toward great-looking wood-plank tiles can create a rich-looking, low-maintenance floor that will withstand the test of time. As an added bonus, wood-plank tiles and the products used to install them are very low in volatile organic compounds (VOCs).

**Issues:** Aesthetics, long-lasting, low VOCs

**Solutions:** Tile and stone offer a durable finish with low VOCs. Digital printing techniques produce tiles that can be indistinguishable from higher-maintenance finishes like wood. MAPEI offers system solutions for trouble-free installations based on industry-approved methods.

- 1 Concrete
- 2 *Mapecem Quickpatch*
- 3 *Primer T*
- 4 *Ultraplan 1 Plus*
- 5 *MAPEI SM Primer*
- 6 *Mapesonic 2*
- 7 *Keraflex Super*
- 8 Ceramic tile or stone
- 9 *Ultracolor Plus FA* or *Ultracolor Plus Max*
- 10 *Mapesil T Plus*
- 11 *UltraCare Penetrating Plus* Stone, Tile & Grout Sealer



# INTERIOR

## BATHROOM SHOWER RENOVATION

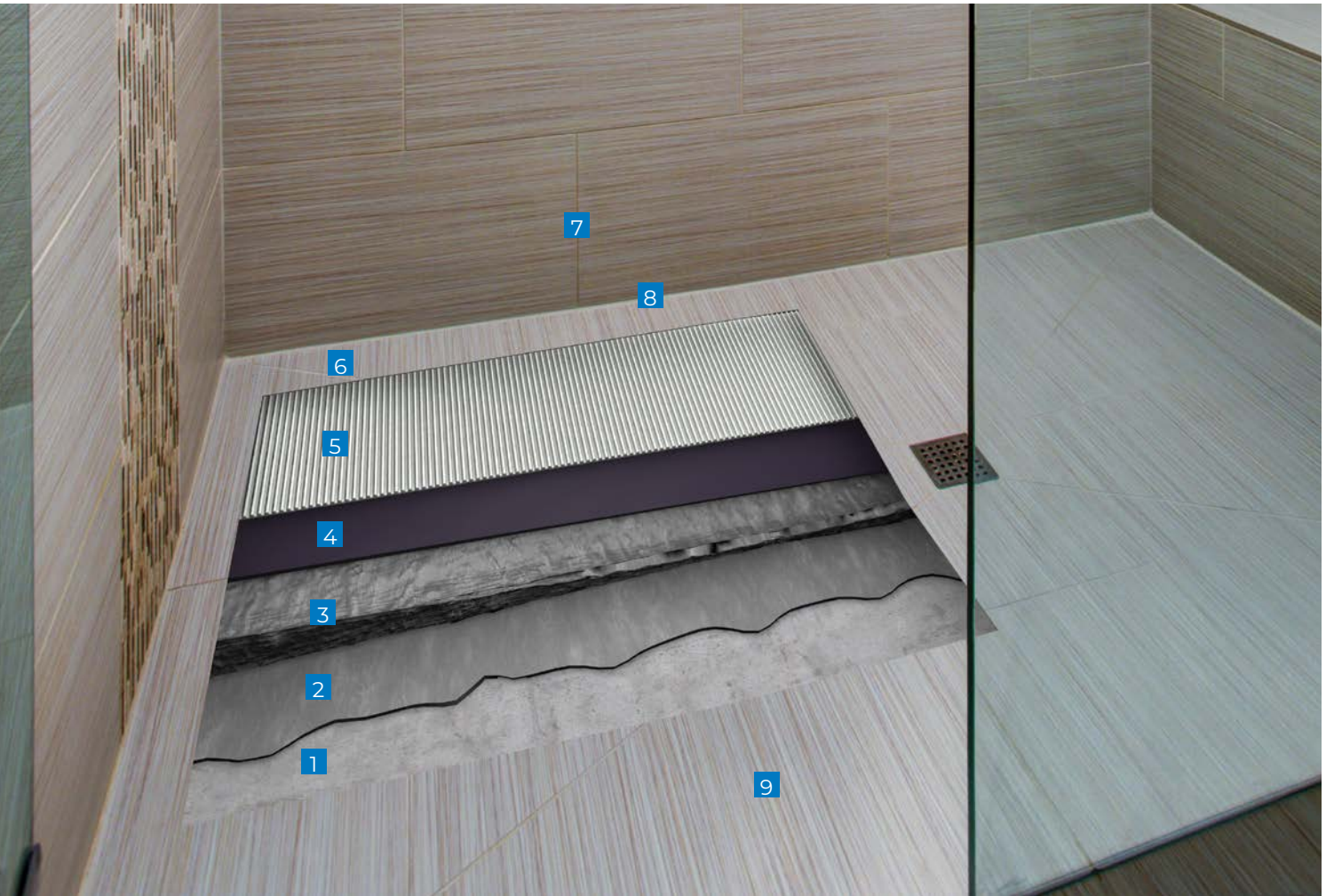
CERAMIC OR  
STONE TILE

Retrofitting existing bathrooms into clean, hygienic and sterile spaces is an accelerating hospitality trend. However, this does not mean sacrificing aesthetic qualities when the retrofit features new tile installed with a MAPEI system solution. From the mortar used to create slope, to the waterproofing membrane and mortar, to the final grout and sealant, this fast-track retro-fitting solution allows you to maintain cleanliness and style, with quick turnaround time and durable, warranted products.

**Issues:** High cost of renovation, loss of revenue due to long downtimes for renovation

**Solution:** Fast-track mortar that allows sloping and tile-setting in as little as two hours

- 1 Concrete
- 2 *Planislope RS* slurry coat
- 3 *Planislope RS* dry pack
- 4 *Mapelastic Turbo*
- 5 *Keraflex Super*
- 6 Ceramic tile
- 7 *MAPEI Flexcolor CQ*
- 8 *Mapesil T Plus*
- 9 *UltraCare Penetrating Plus SB* Stone & Porcelain Tile Sealer



Updating existing ceramic tile- or stone-clad showers and tub surrounds found in the hospitality environment with new tile or stone is costly, time-consuming, expensive and messy. When MAPEI's *Shower System 4 LVT* products are used to install LVT with its myriad of visuals, the process of updating these tired installations becomes much easier and cleaner with a lot less downtime.

**Issues:** The high cost and extensive labor involved with removing and replacing tired tile- or stone-clad showers and tub surrounds to keep up with contemporary style

**Solution:** Simple LVT installation over existing tile or stone surfaces, using premixed materials that add no dust or debris to the surrounding environment and that add minimal-build thickness on walls and floors

- 1 Existing ceramic tile
- 2 *Planiprep 4 LVT*
- 3 *Ultrabond ECO MS 4 LVT Wall*
- 4 LVT
- 5 *MAPEI Flexcolor CQ*
- 6 *Mapecoat 4 LVT*
- 7 *Mapesil T Plus*

## INTERIOR

### BATHROOM SHOWER RENOVATION

LUXURY VINYL TILE



## Sustainability and hospitality go hand-in-hand

The past few years have seen a growing demand for sustainable designs for the hospitality industry, for the dual focus of renewing both mind and body. MAPEI's philosophy is in line with this philosophy in balancing performance and sustainability, formulating products that are solvent-free and very low in volatile organic compounds (VOCs). Our products take into account the health and well-being of not only the installer but also the guests visiting your hotel and resort.

To quickly identify MAPEI products that can contribute to sustainable programs, look at the Sustainability Product Report for each product. Contact our Technical Services' Sustainability Manager at [sustainability\\_USA@mapei.com](mailto:sustainability_USA@mapei.com) (USA) or [sustainability-durabilite@mapei.com](mailto:sustainability-durabilite@mapei.com) (Canada) for specific sustainable product certifications and documentation.



### Environmental Product Declarations

An Environmental Product Declaration (EPD) uses verifiable methods (the ISO 14025 standard) to communicate the energy, water, transportation and other environmental impacts associated with manufacturing a product based on a Life Cycle Assessment (LCA) and prepared according to established rules/requirements. MAPEI participates in "industry-average" in addition to product-specific EPDs.



### Manufacturers' Inventory

The Manufacturers' Inventory (MI) is a transparency document that shows the ingredients in a product, as well as any associated hazards. These third-party-verified MIs give MAPEI the freedom to develop a reporting document that aligns with mandatory regulatory chemical audit methodologies, while providing the same required information and verification rigor as other material ingredient reports, such as HPDs.



### SCS Global Services' Indoor Advantage Gold

To be certified to the Indoor Advantage Gold™ standard, products must be independently tested by SCS-approved labs following specific protocols for measuring Volatile Organic Compounds (VOC) emissions. Indoor Advantage Gold™ ensures full compliance with the California Department of Public Health's (CDPH) "Standard Method for the Testing and Evaluation of Volatile Organic Chemical Emissions from Indoor Sources." Certification qualifies products to earn credit under U.S. Green Building Council's LEED version 4, Living Building Challenge's Health and Happiness Imperative, and other widely adopted green building rating systems.



### Green Squared



MAPEI products with this logo are certified by TCNA's Green Squared program (ANSI A138.1), North America's first sustainable product program developed exclusively for tiles and tile installation materials and accepted in LEED v4 credit program. SCS Global Services (SCS) is the third-party certifier for these products.



### Red List Free

When a product is in its developmental stage, all factors influencing its impact on the environment and human health are evaluated from a sustainable perspective. This evaluation includes reducing and replacing "chemicals of concern" (e.g., formaldehyde, phthalates and isocyanates) with chemicals that have a lower risk, which then grants products with Living Building Challenge's "Red List free" status.

## **ECO Prim Grip™**

### **Multipurpose, Bond-Promoting Primer**

*ECO Prim Grip* is a ready-to-use, low-VOC, synthetic resin-based primer with bond-promoting silica aggregates suspended in a dispersion. It enhances the performance and adhesion of mortars to existing ceramics and difficult-to-bond-to substrates. Plus, it improves bonding of self-leveling underlayments (SLUs) and bonds of render coats over cementitious substrates. Suitable for a wide variety of substrates, *ECO Prim Grip* combines excellent versatility with an easy, low-odor application.

## **Elastocolor® Coat**

### **Water-Based, High-Build, 100%-Acrylic, Waterproof Coating**

*Elastocolor Coat* is a water-based, high-build, 100%-acrylic coating designed to protect and decorate above-grade, exterior/interior vertical concrete, masonry, stucco, fiber-reinforced polymer (FRP) composites and EIFS systems. *Elastocolor Coat* is available in two textures (smooth and fine), in a wide range of standard colors and in an unlimited number of custom colors to increase its design versatility.

## **Elastocolor® Primer AR**

### **Water-Based, Alkali-Resistant Primer for Elastocolor Coatings**

*Elastocolor Primer AR* is a specially designed primer for use on exterior, above-grade, new and previously coated concrete and masonry surfaces. *Elastocolor Primer AR* will protect subsequent coatings from the damaging effects of high pH present in freshly placed cement-based products. It remains highly flexible, offers excellent filling and adhesion on prepared substrates, and is designed for compatibility with MAPEI's *Elastocolor* coating systems.

## **Granirapid® System**

### **Premium, Rapid-Setting, Flexible Tile Mortar**

*Granirapid* is the industry's first and most flexible, high-performance, fast-curing mortar system geared for fast-track projects. It develops high, early mechanical strength and can be specified for the most demanding tile applications. Thanks to MAPEI's High-Hydrated Cement Technology (HCT™), *Granirapid* offers superior drying-out characteristics for quick curing and does not contribute to efflorescence. When installed in conjunction with *Ultracolor® Plus FA* grout, *Granirapid* will allow water submersion in only 72 hours.

## **Kerabond/Keralastic™ System**

### **Premium, Flexible Tile Mortar**

*Kerabond/Keralastic System* is a high-performance, two-part system: *Keralastic®*, a second-generation "flexible" acrylic latex additive, is used to enhance the performance of *Kerabond®*, which is a premium-grade dry-set mortar. This system has exceptional bond strength, flexural strength, elongation and freeze/thaw durability. To

ensure proper flexibility, always use a latex additive when applying a dry-set mortar over plywood or to set nonvitreous tiles.

## **Kerabond® T / Keralastic® System**

### **Premium, Flexible Large-and-Heavy-Tile and Thin-Set Mortar**

*Kerabond T / Keralastic System* is a high-performance, two-part system: *Keralastic*, a second-generation "flexible" acrylic latex additive, is used to enhance the performance of *Kerabond T*, which is a premium-grade, large-and-heavy-tile mortar (formerly known as "medium-bed mortar") and thin-set mortar. This system has exceptional bond strength, flexural strength, elongation and freeze/thaw durability.

## **Keraflex™ Super**

### **Premium, Extra Smooth, Large-and-Heavy-Tile Mortar with Polymer**

*Keraflex Super* is a highly versatile, non-sag/nonslump, large-and-heavy-tile mortar and thin-set mortar for tile and stone for installations on floors, walls and countertops. This polymer-modified mortar has a high content of a unique dry polymer, resulting in excellent adhesion to the substrate and tile, with enhanced resistance to freeze/thaw environments. It is formulated with Easy Glide Technology™ for ease of application and with a consistency that allows adjustability when used with lippage control systems. *Keraflex Super* can also be used as a mortar over uncoupling, crack-isolation, sound-reduction and waterproofing membranes.

## **Kerapoxy® 410**

### **Premium, 100%-Solids, Epoxy Setting Mortar**

*Kerapoxy 410* is a two-component, solvent-free, 100%-solids, epoxy setting floor and wall mortar that is suited for areas where most chemical-resistant setting material is necessary. It also has high compressive strength, which provides excellent impact strength in commercial facilities. *Kerapoxy 410* is designed for setting most types of tile and stone.

## **Kerapoxy® CQ**

### **Premium, Epoxy Grout and Mortar with Color-Coated Quartz**

*Kerapoxy CQ* is an improved, two-component, 100%-solids, epoxy grout and mortar that is non-sagging/nonslumping in joints up to 3/8" (10 mm) in width, water-cleanable and easy to apply. *Kerapoxy CQ* uses a proprietary aggregate to achieve its durable color, making it excellent for countertops, high-traffic areas, and areas needing stain and chemical resistance. Easy to maintain, *Kerapoxy CQ* will clean to the original color and contains BioBlock® technology to help protect against mold and mildew.

## **Kerapoxy® IEG CQ**

100%-Solids, Industrial-Grade, Epoxy Grout with Color-Coated Quartz

*Kerapoxy IEG CQ* is a water-cleanable, 100%-solids, epoxy grout with high chemical and stain resistance. It is a nonshrinking, non-sagging, fast-curing, efflorescence-free grout. It is a nonshrinking, non-sagging, fast-curing, efflorescence-free grout. Color-coated quartz dramatically improves its cleanability, so that *Kerapoxy IEG CQ* leaves very little film residue during cleanup of excess grout with a grout float. The color-coated quartz also eliminates pigment bleed, so tiles are not stained during installation.

This grout is perfectly suited for use in commercial kitchens, meat packing houses, and any commercial and institutional floors that require daily cleaning with enzymatic cleaners. *Kerapoxy IEG CQ* is ideal for applications where high-strength, mold- and mildew-resistant grout joints are required. In addition, it has high temperature resistance and can be steam-cleaned.

## **Mapebond™ 700**

Solvent-Based Contact Adhesive

*Mapebond 700* is a quick-drying, solvent-based, high-tack contact adhesive. It is specifically formulated to promote maximum adhesion of MAPEI waterproofing membranes to various substrates.

## **Mapebond™ 710**

Low-VOC, Solvent-Based Contact Adhesive

*Mapebond 710* is a low-VOC, quick-drying, solvent-based, high-tack contact adhesive. It is specifically formulated to promote maximum adhesion of MAPEI waterproofing membranes to various substrates.

## **Mapebond™ 720**

Water-Based Contact Adhesive

*Mapebond 720* is a quick-drying, water-based, high-tack contact adhesive. It is specifically formulated to promote maximum adhesion of MAPEI waterproofing membranes to various substrates.

## **Mapecem® Quickpatch**

High-Performance Concrete Patch

*Mapecem Quickpatch* is a high-performance, fast-setting, cementitious material used for the patching of concrete surfaces.

## **Mapecoat™ 4 LVT**

Two-Component, Water-Based, Aliphatic, Anti-Slip, Polyurethane Finish for LVT

*Mapecoat 4 LVT* is a transparent protective finish that comes in matte (10 gloss) and semi-gloss (30 gloss) for luxury vinyl tile (LVT) in addition to other resilient flooring in horizontal and vertical applications. It provides a non-slip finish with high resistance to wear in residential and

commercial environments, including wet areas such as tub surrounds and shower enclosures as well as dry areas that are subject to high foot traffic.

## **Mapecrete™ Protector FF**

High-Gloss, Film-Forming Protective Coating for Concrete

*Mapecrete Protector FF* is a film-forming, high-gloss protective coating designed to increase the stain resistance of interior, polished or hard-troweled concrete floors.

## **Mapedrain™ 30**

High-Strength, High-Flow, Prefabricated Drainage Composite with Woven Filter Fabric

*Mapedrain 30* is a high-strength, three-dimensional drainage composite. It consists of a woven filter fabric bonded to individual dimples of a molded polypropylene core, minimizing fabric intrusion into the drainage channels caused by overburden pressure. The filter fabric allows water to pass freely into the drainage core, which provides hydrostatic relief while preventing the passage of soil or sand particles that might clog the core. *Mapedrain 30's* woven, monofilament fabric withstands high abrasion from applied overburden and prevents intrusion into the drainage core due to its low elongation characteristics. As such, the woven fabric is better suited to receive direct poured concrete than nonwoven geotextile fabrics.

## **Mapedrain™ 35**

High-Strength, High-Flow, Prefabricated Drainage Composite with Woven Filter Fabric and Protective Film

*Mapedrain 35* is a high-strength, three-dimensional drainage composite. It consists of a woven filter fabric bonded to individual dimples of a molded polypropylene core, minimizing fabric intrusion into the drainage channels caused by overburden pressure. The filter fabric allows water to pass freely into the drainage core, which provides hydrostatic relief while preventing the passage of soil or sand particles that might clog the core. *Mapedrain 35's* woven, monofilament fabric withstands high abrasion from applied overburden and prevents intrusion into the drainage core due to its low elongation characteristics. As such, the woven fabric is better suited to receive direct poured concrete than nonwoven geotextile fabrics. *Mapedrain 35* also has a polymeric protective film on the back side to provide additional protection to waterproofing membranes.

## **Mapedrain™ 50**

Extra High-Strength, High-Flow, Prefabricated Drainage Composite

*Mapedrain 50* is an extra high-strength, three-dimensional drainage composite. It consists of a woven filter fabric bonded to individual dimples of a molded polypropylene core, minimizing fabric intrusion into the

drainage channels caused by overburden pressure. The filter fabric allows water to pass freely into the drainage core, which provides hydrostatic relief while preventing the passage of soil or sand particles that might clog the core. *Mapedrain 50's* woven, monofilament fabric withstands high abrasion from applied overburden and prevents intrusion into the drainage core due its low elongation characteristics. As such, the woven fabric is better suited to receive direct poured concrete than nonwoven geotextile fabrics.

### **Mapedrain™ TD Drainage Composite**

#### **High-Strength, High-Flow Drainage Composite for Foundations**

*Mapedrain TD Drainage Composite* is a high-strength, three-dimensional modular drainage and collection composite for foundations. It consists of a nonwoven filter fabric that is bonded to and wrapped around a molded polypropylene core, minimizing fabric intrusion into the drainage channels that are caused by overburden pressure. The filter fabric allows water to pass freely into the drainage core, which provides hydrostatic relief while preventing the passage of soil or sand particles that might clog the core. *Mapedrain TD Drainage Composite* is designed to replace a conventional gravel-covered pipe drain.

### **Mapedrain™ TD Fittings**

#### **Fittings for Installing Mapedrain TD Drainage Composite**

*Mapedrain TD Fittings* consist of end outlet, side outlet, splice and corner fittings that are made out of polyethylene and assist in installing *Mapedrain TD Drainage Composite*. The end outlet fitting connects the end of *Mapedrain TD Drainage Composite* to a 4" (10 cm) corrugated pipe. The side outlet fitting connects the side of *Mapedrain TD Drainage Composite* to a 4" (10 cm) corrugated pipe. The splice fitting connects two pieces of *Mapedrain TD Drainage Composite* end to end. And the corner fitting connects two pieces of *Mapedrain TD Drainage Composite* together at the inside or outside corners of a building.

### **Mapefer™ 1K**

#### **Corrosion-Inhibiting Coating for Reinforcing Steel**

*Mapefer 1K* is a one-component, anti-corrosion coating based on unique polymers, cementitious binders and corrosion inhibitors. *Mapefer 1K* is specially formulated for application on properly prepared reinforcing steel to inhibit oxidation and rust formation.

### **Mapeflex® P1 FT**

#### **One-Component, Non-Sag, Elastomeric Polyurethane Sealant**

*Mapeflex P1 FT* is a high-performance, one-component, fast-track, elastomeric, moisture-cured, polyurethane sealant and adhesive. *Mapeflex P1 FT* offers excellent

adhesion to most surfaces, superior gunning and tooling, and excellent flexibility for moving joints.

### **Mapeflex® P2 NS**

#### **Two-Component, Non-Sag, Polyurethane Sealant**

*Mapeflex P2 NS* is a two-component, non-sag, polyurethane sealant that meets the requirements of ASTM C920.

### **Mapefloor™ Finish 415 NA**

#### **Two-Component, Polyurethane Topcoat for Mapefloor Parking Deck System**

*Mapefloor Finish 415 NA* is a two-component, solvent-free, aromatic polyurethane topcoat specifically designed to provide a protective wear coat for elevated concrete surfaces where the *Mapefloor* parking deck system is utilized.

### **Mapefloor™ Finish 450**

#### **Two-Component, Aliphatic, Polyurethane Topcoat**

*Mapefloor Finish 450* is a two-component, solvent-free, aliphatic, polyurethane topcoat specifically designed to provide a protective wear coat for elevated concrete surfaces in areas that are exposed to direct sunlight.

### **Mapefloor™ PU 400 FC**

#### **Two-Component, Fast-Curing, Polyurethane Basecoat for Mapefloor Parking Deck System**

*Mapefloor PU 400 FC* is a two-component, fast-curing, polyurethane basecoat specifically designed for use as a waterproofing membrane for elevated concrete surfaces where the *Mapefloor* parking deck system is utilized. With its high elongation and crack-bridging properties, *Mapefloor PU 400 FC* is suited as a basecoat layer on concrete substrates subject to vibration.

### **Mapefloor™ PU Primer**

#### **Two-Component Polyurethane Primer**

*Mapefloor PU Primer* is a two-component, polyurethane-based primer that can be used for initial application of *Mapefloor* parking deck systems or as a recoat primer for already installed polyurethane deck systems.

### **Mapeguard® 2**

#### **3-in-1 Membrane for Crack Isolation, Waterproofing and Sound Reduction**

*Mapeguard 2* is a next-generation, flexible, thin, 40-mil (1-mm) lightweight, load-bearing, fabric-reinforced "peel-and-stick" crack-isolation, waterproofing and vapor-control membrane. *Mapeguard 2* helps to prevent existing or future in-plane floor cracks (with movement up to 3/8" [10 mm] wide) from transmitting through grout, ceramic tile and natural stone. It also reduces the transmission of impact sound (footsteps, dropped objects, etc.) and airborne sound (voice, TV, etc.) through floors when installed under ceramic tile, stone or wood floor coverings.

## **Mapeguard® CI**

Peel-and-Stick, Crack-Isolation Sheet Membrane for Tile Installations

*Mapeguard CI* is a flexible, thin (1/16" or 1.5 mm), lightweight, load-bearing, fabric-reinforced, "peel-and-stick" crack-isolation membrane. After application, ceramic tile or stone can be installed immediately with approved polymer-modified cement-based mortar. *Mapeguard CI* helps to prevent existing or future in-plane floor cracks (with movement up to 3/8" or 10 mm wide) from transmitting through grout, ceramic tile or natural stone.

## **MAPEI Flexcolor® CQ**

Ready-to-Use Grout with Color-Coated Quartz

*MAPEI Flexcolor CQ* is a professional-grade, ready-to-use specialty grout for precision commercial and residential installations with porcelain, ceramic and natural-stone tiles. *MAPEI Flexcolor CQ* can be used to grout interior/exterior tile, and its nonporous composition helps to prevent water-based stains by providing water repellency to the grout surface. *MAPEI Flexcolor CQ* is formulated with the latest innovation in quartz aggregate, which ensures color consistency, ease of cleanability and improved workability. In addition, this grout can be used on sensitive tile surfaces once tested, requires no sealer and cures naturally from evaporation of the low level of water in the formulation.

Comparison testing of *MAPEI Flexcolor CQ* versus traditional Portland-cement grout has verified that *MAPEI Flexcolor CQ* is 30% more cost-efficient (based on typical rates of installers) and requires 65% less time to install.

## **MAPEI LMR Fabric**

Reinforcing Fabric for Liquid Waterproofing Membranes

*MAPEI LMR Fabric* is a spunbond, nonwoven polyester fabric used as a reinforcement for liquid-applied waterproofing membranes. When embedded into a liquid-applied waterproofing membrane, it will add strength and durability to the overall system.

## **MAPEI HM Primer™**

Water-Based, Interior/Exterior Primer for Sheet Membranes

*MAPEI HM Primer* is a ready-to-use, low-VOC, water-based, quick-drying, high-tack membrane primer. It is specifically formulated to promote maximum adhesion of MAPEI peel-and-stick sheet membranes to high-moisture substrates.

## **MAPEI SM Primer™**

Water-Based Primer for MAPEI Peel-and-Stick Membranes

*MAPEI SM Primer* is a ready-to-use, fast-drying, water-based, latex primer for use under MAPEI's peel-and-stick sheet membranes on residential and commercial indoor or outdoor floors. *MAPEI SM Primer* greatly increases

the bond of MAPEI's peel-and-stick sheet membranes to concrete, plywood and other approved, properly prepared floors. It can be applied with a roller or brush, is white in color and dries clear.

## **MAPEI Ultralite® S2**

Premium, Highly Deformable, Lightweight, Gauged-Tile Mortar with Polymer

*MAPEI Ultralite S2* is a premium-grade, lightweight, single-component thin-set mortar that is ideal for installation of gauged (formerly "thin") porcelain tile. This high-performance, highly deformable, polymer-modified mortar is formulated with Easy Glide Technology™ for ease of application. *MAPEI Ultralite S2* features a long open time and superior transfer properties to enhance back-buttering, and can be used also for ceramic tile and stone. *MAPEI Ultralite S2*'s unique Ultralite Technology™ provides twice the coverage of a standard thin-set mortar per pound/kg and may contribute to LEED points with 20% recycled content.

## **Mapelastic® 315**

Professional, Cement-Based Waterproofing Membrane

*Mapelastic 315* is a trowel-applied, flexible, fiber-mesh-reinforced waterproofing and crack-isolation membrane for installation under ceramic tile and stone on indoor/outdoor residential, commercial and industrial intermittent wet and submerged applications. *Mapelastic 315* provides an excellent barrier to prevent water from migrating into other areas. *Mapelastic 315* is compatible with any polymer-modified cement-based mortar (ANSI A118.4 or better) or epoxy mortar (ANSI A118.3). *Mapelastic 315* exceeds ANSI A118.10 requirements for waterproofing and is IAPMO-listed for use as a shower-pan liner.

## **Mapelastic® AquaDefense**

Premium Waterproofing and Crack-Isolation Membrane

*Mapelastic AquaDefense* is a premixed, advanced liquid-rubber, extremely quick-drying waterproofing and crack-isolation membrane for installation under ceramic tile or stone in residential, commercial and industrial environments. *Mapelastic AquaDefense* provides a thin, continuous barrier to protect adjacent rooms and floors below from water damage. For common problem areas like coves, corners, cracks and drains, it can be combined with MAPEI's optional *Reinforcing Fabric* or *Mapeband™* accessories (cove roll and drain flash) to provide additional protection. *Mapelastic AquaDefense* dries after about 30 to 50 minutes and is then ready to receive any MAPEI polymer or epoxy mortar. *Mapelastic AquaDefense* can be flood-tested after 12 hours of drying time, is IAPMO-listed for use as a shower-pan liner, and exceeds ANSI A118.10 and ANSI A118.12 standards.

## **Mapelastic® Turbo**

Premium, Rapid-Drying, Waterproofing and Crack-Isolation Membrane

*Mapelastic Turbo* is a two-component, rapid-drying, cementitious-binder-based membrane with fine-



grained selected aggregates, special admixtures and synthetic polymers in water dispersion for interior and exterior installations under ceramic tile or stone in residential, commercial and industrial intermittent wet or submerged environments. Applied easily with a roller or brush, *Mapelastc Turbo* provides an excellent barrier to protect adjacent rooms and floors below from water damage. *Mapelastc Turbo* exceeds ANSI A118.10 and ANSI A118.12 standards and is compatible with polymer-modified cement-based mortars (ANSI A118.4 or better) or epoxy mortars (ANSI A118.3).

### **Mapesil® T Plus**

#### **100%-Silicone Sealant with Enhanced Adhesion for Heavy Traffic and Expansion/ Movement Joints**

*Mapesil T Plus* is a professional-grade, 100%-silicone sealant with enhanced adhesion for use on multiple substrates. This product is specifically formulated for heavy traffic and expansion/movement joints exceeding both ASTM and ANSI standards.

### **Mapesonic™ 2**

#### **All-in-One Membrane for Crack Isolation, Sound Reduction, Waterproofing and Vapor Management**

*Mapesonic 2* is a patented, next-generation, flexible, 76-mil thin, lightweight, load-bearing, fabric-reinforced, "peel-and-stick" membrane for sound reduction, crack isolation, waterproofing and vapor management. Application of *Mapesonic 2* can be immediately followed by installation of finished flooring. *Mapesonic 2* reduces transmission of impact sound (such as footsteps and dropped objects) and airborne sound (such as voice and TV) through floors when installed under ceramic tile, stone, vinyl and wood floorings. It also helps to prevent existing or future in-plane floor cracks (with movement up to 3/8" or 10 mm wide) from transmitting through grout, ceramic tile and natural-stone assemblies.

### **Modified Mortar Bed**

#### **Polymer-Modified Thick-Bed and Render Mortar**

*Modified Mortar Bed* is a pre-blended, cement-based, polymer-modified thick-bed and render mortar that includes a blend of select aggregates. Rather than requiring the use of a latex additive, it only needs mixing with water to produce a thick-bed mortar of exceptional strength.

### **Novoplan® 2 Plus**

#### **Professional, Self-Leveling Underlayment**

*Novoplan 2 Plus* is a high-strength, self-leveling, cement-based underlayment and repair mix for interior concrete and engineer-approved floors.

### **Planiprep® 4 LVT**

#### **High-Moisture-Resistant Skimcoat and Embossing Leveler**

*Planiprep 4 LVT* is a premixed, high-moisture-resistant, water-based, acrylic-resin-based skimcoat and embossing leveler.

### **Planiprep® SC**

#### **High-Performance, Fiber-Reinforced Skimcoating Compound**

*Planiprep SC* is a high-performance, polymer-modified, fiber-reinforced, cement-based skimcoating and patching compound. Use *Planiprep SC* to skimcoat and smooth minor surface variations and defects on common substrates. *Planiprep SC* creates a strong, durable surface ready for almost any floor application. Its unique formulation mixes easily with water and produces an easy-to-apply patching compound. Rapid-setting *Planiprep SC* allows for fast-track flooring installations in 30 to 60 minutes after application, depending on thickness and environmental conditions.

### **Planiseal® CR1**

#### **Single-Component, 100%-Solids, Cold-Fluid-Applied, Structural Waterproofing Membrane**

*Planiseal CR1* is a fast-curing, 100%-solids, cold-fluid-applied, single-component, moisture-curing, structural waterproofing membrane that will not shrink and is VOC-compliant in virtually all municipalities. Very low in odor, it is well suited for use in and around occupied spaces. Thanks to advanced proprietary technology, this single-grade membrane can be used in horizontal as well as vertical applications, maximizing versatility. *Planiseal CR1* can be applied by roller, brush, trowel or squeegee.

### **Planiseal® Membrane SA**

#### **Self-Adhering Sheet Membrane**

*Planiseal Membrane SA* is a 63-mil, self-adhering sheet membrane consisting of 61 mils of rubberized asphalt laminated to a 2-mil PET film. The combination of these two excellent waterproofing materials provides a durable, high-performance waterproofing membrane. *Planiseal Membrane SA* is suitable for installations where the ambient and substrate temperatures are above 40°F (4°C).

### **Planislope™ RS**

#### **Rapid-Setting, Polymer-Modified Sloping Mortar**

*Planislope RS* is a rapid-setting, pre-blended, cement-based, polymer-modified mortar that includes a blend of select aggregates for use in sloping and thick-bed mortar installations. It only needs mixing with water to produce a mortar of exceptional strength. Used for preparing a substrate before the installation of tile and stone, *Planislope RS* is designed for pre-sloping under waterproofing membranes and mortar beds in showers when quick turnarounds are desired.

### **Planitop® 12 SR**

#### **Sulfate-Resistant, Vertical, Overhead and Horizontal Repair Mortar with Silica Fume**

*Planitop 12 SR* is a sulfate-resistant, one-component, shrinkage-compensated, cementitious repair mortar. *Planitop 12 SR* is fiber-reinforced, contains both silica fume and a corrosion inhibitor, and is intended for the repair of vertical, overhead and horizontal concrete surfaces.

## **Planitop® XS**

One-Component, Fast-Setting, Extended-Working-Time, Vertical and Overhead Repair Mortar

*Planitop XS* is an extended-working-time variation of *Planitop X*. Shrinkage-compensated, fiber-reinforced, polymer-modified and containing a proprietary corrosion inhibitor, *Planitop XS* features *Planitop X*'s outstanding workability and versatility.

## **Primer SN™**

Two-Component, Filled, Epoxy Primer

*Primer SN* is a two-component, filled, epoxy primer specifically designed to enhance adhesion of cement-based decorative and multilayer flooring, such as MAPEI's *Mapefloor™* products, *Ultratop®* products, *PlaniLevel™* products and *Planitop® EL*.

## **Primer SN™ Fast**

Fast-Setting, Two-Component, Fillerized, Epoxy Primer

*Primer SN Fast* is a fast-setting, two-component, fillerized, epoxy primer specifically designed to enhance adhesion of multilayer flooring systems, such as MAPEI's *Mapefloor™* polyurethane and epoxy systems as well as urethane cement screeds.

## **Primer T™**

All-Purpose Primer for Self-Leveling Underlayments

*Primer T* is a low-VOC, magenta-colored, water-based acrylic primer that enhances the performance and adhesion of self-leveling underlayments (SLUs) on nonporous and porous substrates. Suitable for a wide variety of substrates, *Primer T* combines excellent versatility with easy, low-odor application.

## **Topcem™ Premix**

Accelerated-Cure Screed

*Topcem Premix* is an accelerated-cure screed mortar suitable for bonded as well as unbonded applications. *Topcem Premix* can easily be screeded or sloped, and has the workability and working time of conventional screed mortars.

## **Ultrabond ECO® 185**

Professional Carpet Adhesive

*Ultrabond ECO 185* is a latex-based adhesive that offers fast grab and quick leg development for the fast-track installation of commercial carpet. It can be used in direct-bond and double-stick carpet applications.

## **Ultrabond ECO® 220**

Premium Flooring Adhesive

*Ultrabond ECO 220* is a high-solids, latex-based adhesive designed specifically for installing carpet and felt-backed vinyl sheet flooring. Its unique formulation is perfectly suited for commercial flooring applications where heavy traffic is expected. *Ultrabond ECO 220* also exhibits an extended working time, making it ideal for the installation

of patterned carpets. It may be used in both direct and double glue-down installation methods for carpet.

## **Ultrabond ECO® 399**

Heavy-Duty, Pressure-Sensitive, Multi-Flooring Adhesive

*Ultrabond ECO 399* is a high-moisture-resistant, heavy-rolling-load-resistant, aggressive, pressure-sensitive adhesive with enhanced dimensional control properties designed to install a wide variety of resilient flooring types.

## **Ultrabond ECO® 811**

Universal Carpet Tile Adhesive

*Ultrabond ECO 811* is a high-performance, acrylic latex adhesive designed to provide an aggressive tack for installing all types of carpet tile. *Ultrabond ECO 811* provides a secure, releasable adhesive base for standard PVC-backed carpet tile as well as for non-PVC-, polyolefin-, felt- and bituminous-backed carpet tile. It can also be used to bond fiberglass-reinforced vinyl sheet flooring.

## **Ultrabond ECO® MS 4 LVT Wall**

Professional, Hybrid-Polymer Adhesive for Resilient Flooring on Walls

*Ultrabond ECO MS 4 LVT Wall* is a moisture-curing, one-component, thixotropic, silane-modified polymer adhesive specifically designed for the direct bonding of various resilient flooring types in both wall and floor installations.

## **Ultracolor® Plus FA**

Rapid-Setting, "All-in-One" Grout Replacement for Sanded and Unsanded Grouts

*Ultracolor Plus FA* with DropEffect™ technology is an ultra premium, fine-aggregate, fast-setting, polymer-modified, color-consistent, nonshrinking, efflorescence-free grout for joint widths from 1/16" to 3/4" (1.5 to 19 mm). DropEffect reduces surface absorption to help repel water, dirt and grime from penetrating grout joints. *Ultracolor Plus FA* is specially formulated with MAPEI's High-Hydrated Cement Technology (HCT™) to eliminate the common problems related to Portland-cement grout, such as color consistency and efflorescence. Along with offering higher polymer content, HCT reduces absorption and increases stain resistance when compared with standard-performance cement grouts.

## **Ultracolor® Plus Max**

High-Performance, Rapid-Setting Grout with Maximized Color Depth and Color Consistency

*Ultracolor Plus Max* is an ultra premium, fast-setting, polymer-modified, nonshrinking grout that offers rich and vibrant colors with maximized color depth and color consistency. This fine-aggregate grout can be used for joint widths from 1/16" to 3/4" (1.5 mm to 19 mm). *Ultracolor Plus Max* includes DropEffect™ technology for reduced surface absorption, helping to repel water, dirt and grime from penetrating grout joints. It is also

specially formulated with MAPEI's High-Hydrated Cement Technology (HCT™) to provide advantages over traditional grout, such as eliminating efflorescence and increasing stain resistance.

### **Ultraflex® LFT™**

#### **Premium, Large-and-Heavy-Tile Mortar with Polymer**

*Ultraflex LFT* is a premium, non-sag, large-and-heavy-tile mortar and thin-set mortar designed for large-format and heavy tile and stone for interior/exterior floor, wall and countertop installations. This mortar has a high content of unique dry polymer, resulting in excellent adhesion to the substrate and tile. It is formulated with Easy Glide Technology™ for ease of application.

### **UltraCare® Penetrating Plus SB Stone & Porcelain Tile Sealer**

*UltraCare Penetrating Plus SB Stone & Porcelain Tile Sealer* is a premium, natural-look, solvent-based penetrating sealer that uses VOC-exempt materials and will provide maximum protection against most common stains for all interior and exterior natural stone (marble, limestone, sandstone, slate, granite, travertine, etc.), unglazed porcelain and ceramic tiles, masonry, quarry tiles and cement grout. The product can also be used as a pre-grouting sealer.

### **UltraCare® Penetrating Plus Stone, Tile & Grout Sealer**

*UltraCare Penetrating Plus Stone, Tile & Grout Sealer* is a premium, natural-look, water-based penetrating sealer that provides maximum protection against most common stains for all interior and exterior natural stone (marble, limestone, sandstone, slate, granite, travertine, etc.), unglazed ceramic tile, masonry and cement grout. The product can also be used as a pre-grouting sealer.

### **UltraCare® Penetrating SB Stone, Tile & Grout Sealer**

*UltraCare Penetrating SB Stone, Tile & Grout Sealer* is a natural-look, solvent-based penetrating sealer that provides maximum protection against most common stains. It is safe for use on all interior and exterior natural stone (marble, limestone, sandstone, slate, granite, travertine, etc.), unglazed porcelain and ceramic tiles, masonry, quarry tiles and cement grout. The product can also be used as a pre-grouting sealer.

### **Ultraplan® 1 Plus**

#### **High-Performance, Quick-Setting, Self-Leveling Underlayment**

*Ultraplan 1 Plus* is a quick-setting, self-leveling, self-drying underlayment and repair mix for interior concrete and engineer-approved floors. *Ultraplan 1 Plus* has high strength and is abrasion-resistant, able to withstand light foot traffic after 2 to 3 hours and vehicular rubber-wheel traffic after 3 days.

### **Ulratop®**

#### **High-Performance, Self-Leveling Concrete Topping**

*Ulratop* is a self-leveling, self-curing, sealed or polished topping that is specially formulated for fast-track resurfacing of horizontal wear surfaces.

### **Ulratop® SP**

#### **High-Performance, Polishable, Self-Leveling Topping for a Fine-Aggregate Finish**

*Ulratop SP* is a polishable, self-leveling, cementitious topping that provides a fine-aggregate exposed finish. *Ulratop SP* is engineered for fast-track resurfacing of horizontal wear surfaces.



SYSTEM SOLUTIONS GUIDE:

# HOSPITALITY



MAPEI USA  
MAPEI Caribe  
MAPEI Canada

## MAPEI Headquarters of North America

1144 East Newport Center Drive  
Deerfield Beach, Florida 33442  
1-888-US-MAPEI (1-888-876-2734) /  
(954) 246-8888

## Technical Services

1-800-992-6273 (U.S. and Puerto Rico)  
1-800-361-9309 (Canada)

## Customer Service

1-800-42-MAPEI (1-800-426-2734)

## Services in Mexico

0-1-800-MX-MAPEI (0-1-800-696-2734)

Copyright ©2022 by MAPEI Corporation ("MAPEI") and all rights are reserved. All intellectual property rights and other information contained in this document are the exclusive property of MAPEI (or its parent or related companies), unless otherwise noted. No part of this document may be reproduced or transmitted in any form without the prior written consent of MAPEI.

Printed in the USA.

