

**Four rinks under  
one roof – and  
MAPEI takes you  
every step of  
the way**

ENTRÉE AMPHITHÉÂTRE ENTRANCE

CENTRE **SLUSH PUPPIE**

ENTRÉE GLACES COMMUNAUTAIRES ENTRANCE





Since 2020, **MAPEI** has been a **proud sponsor** of the Quebec Major Junior Hockey League's **Gatineau Olympiques**. Now we're excited to be here to help welcome them to their new home: Centre Slush Puppie.

#### Olympiques factsheet:

**Years in the QMJHL:** 48 (since 1973-74)

**President's Cup Champions:** 2008, 2004, 2003, 1997, 1995, 1988, 1986

**Memorial Cup Champions:** 1997

**Last Memorial Cup appearance:** 2008

**Former players include:** Sylvain Turgeon, Sam Lang, Charles Henry, Pat Burns, Luc Robitaille, Guy Rouleau, Alain Vigneault, Martin Gélinas, José Théodore, Claude Julien, Colin White, Jiri Fischer, Maxime Talbot, Benoît Groulx, Paul Byron, Claude Giroux, Vitalii Abramov, Jean-Gabriel Pageau.

**President:** Norm MacMillan

**General-Manager and Coach:** Louis Robitaille

## CURRENT ROSTER:\*



### Gatineau Olympiques

property of the  
Pittsburgh Penguins (NHL)

- 12 Tristan Allard (C)
- 58 Isaac Belliveau (D)
- 71 Justin Bergeron (D)
- 21 Mathieu Bizier (C)
- 3 Olivier Boutin (D)
- 27 Will Chisholm (C)
- 91 Cole Cormier (RW)
- 19 Kieran Craig (LW)
- 14 Zachary Dean (RW)
- 30 Emerik Despatie (G)
- 9 Haakon Frederik Hånel (LW)
- 46 Émile Gadoury (RW)
- 22 Evgenii Kashnikov (D)

property of the  
Vegas Golden Knights (NHL)

property of the  
Washington Capitals (NHL)

property of the  
San Jose Sharks (NHL)

- 85 Nicolas Kingsbury-Fournier (LW)
- 13 Manix Landry (C)
- 18 Charles-Antoine Lavallée (LW)
- 8 Tristan Luneau (D)
- 7 Vincent Maisonneuve (D)
- 23 Mikael Martel (RW)
- 6 Antoine Michaud (D)
- 17 Julien Paillé (LW)
- 31 Rémi Poirier (G)
- 93 Samuel Savoie (LW)
- 43 Antonin Verreault (LW)
- 5 Noah Warren (D)

property of the  
Arizona Coyotes (NHL)

property of the  
Dallas Stars (NHL)

\*(per <https://theqmjhl.ca/roster/12/198> as of September 15, 2021)





## Four rinks under one roof – A cinch with MAPEI systems

After a 2020-21 season that saw the Quebec Major Junior Hockey League's Gatineau Olympiques playing almost no games on home ice, and experiencing one hiccup after another, perhaps it's fitting that the team was able to start the 2021-22 season fresh - with a brand new arena and state-of-the-art amenities and training facilities, all under one roof: the Centre Slush Puppie.

With no less than four full-sized ice surfaces (three for community use, figure skating, and pick-up leagues; the fourth, an amphitheatre with VIP booths and 4,000-seating capacity for the Olympiques), the freshly completed 220,000-square-foot (20 439-m<sup>2</sup>) multipurpose venue has a sizable footprint.

Project contractors, Beaudoin Canada and Construction JPL, and the city of Gatineau all knew MAPEI well from previous successful projects using MAPEI's Cementitious and Resinous Flooring Systems and Tile & Stone Installation Systems.

"We had the answer for every need," said Justin Lafontaine, MAPEI's Business Development Manager for Eastern Canada in an interview. "In recent years, the city of Gatineau and MAPEI have developed a fantastic working relationship, built on a number of successful construction and restoration projects, from Maison de la Culture to Fire Station #3, and so for the Centre Slush Puppie, they had us on the spec from the start."



Delivered in September 2021, Lafontaine noted this is "by far our largest Industrial Flooring systems deployment yet in Canada." It features **Mapecoat<sup>™</sup> Universal** epoxy-resin seal coat and binder. Common areas here and throughout the interior were first coated in **Primer SN** and **Mapecoat<sup>™</sup> Universal** epoxy-resin basecoat, boasting easy cleanability and good resistance against the abrasives and salts commonly tracked-in by pedestrian boots in cold Canadian winters. It also provides a highly attractive slip-resistant finish that is both flat and seamless.

## MAPEI on the job

Industrial Flooring systems provide both durability and a host of possibilities for decorative finishes. Visitors at the new centre's community entrance and amphitheatre entrance (for the main arena) are greeted with a stylish broadcast of **Mapecoat<sup>™</sup> Universal** epoxy-resin seal coat and binder. Common areas here and throughout the interior were first coated in **Primer SN** and **Mapecoat<sup>™</sup> Universal** epoxy-resin basecoat, boasting easy cleanability and good resistance against the abrasives and salts commonly tracked-in by pedestrian boots in cold Canadian winters. It also provides a highly attractive slip-resistant finish that is both flat and seamless.

### Surface Preparation

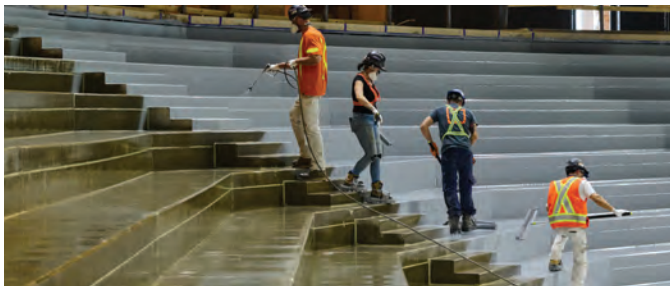
To prepare the concrete slab beforehand, installers from Idéal Epoxy had started with **Mapecem<sup>®</sup> Quickpatch** to correct imperfections, and **Planitop<sup>®</sup> 18 ES** high-early-strength, cementitious repair mortar with a corrosion inhibitor for sloping of the floor around the foot grills



in the entrances. They also used **Planigrout® 712** nonshrinking, nonmetallic cement-based grout with corrosion inhibitor as a protective coat for the steel-column baseplates.

### [Main arena and stands](#)

The 4,000-capacity seating area for the amphitheatre was built a little differently from the rest of the project, with precast concrete that was cured to a very high density compared with the concrete slabs elsewhere. This required a low-viscosity primer to promote a better bond, so they went with **Mapecfloor I 900** instead of the usual *Primer SN*.



Shane Edwards, MAPEI Canada's Product Line Manager for Industrial Flooring, noted another great benefit of this system: "Our **Mapecfloor I 302 SL** is high-viscosity, but it can still be easily spray-applied with no concern about clogging up the equipment. Some contractors want to dilute the product with solvents for spray-application, but we don't recommend it, since it can cause issues with the resiliency and color quality of the finished product." And as the crew from Idéal Epoxy found out, such dilution was completely unnecessary. In this case, their team was able to spray-apply 65,000 sq.-ft. (6 039 m<sup>2</sup>) of **Mapecfloor I 302 SL** in a single day, covering the entire vertical and horizontal surfaces for the stands of the main rink.

### [Maintenance areas](#)

Taking care of four arenas means the site sees a lot of traffic from their Zamboni fleet (the heavy machines used for ice rink resurfacing – each weighing up to 7,720 lbs. [3 502 kg] when fully-loaded with water). Therefore, an even more rugged solution was needed for these areas. Enter **Mapecfloor CPU/RT** polyurethane/cementbased screed with a high level of chemical resistance. Together with its complementary topcoat, **Mapecfloor CPU/TC**, it is formulated to cover industrial floors that are subject to heavy vehicular traffic, aggressive chemicals and thermal shock, so that made it a natural choice for the flooring in the facility's maintenance areas and service corridors.



One other special consideration was the amount of direct sunlight many areas of epoxy-resin flooring are subject to, given the floor-to-ceiling pane glass front walls spanning the length of the structure's main facade as a welcoming feature of Architecture49 Inc.'s designs. Specifiers determined an extra finishing coat would be necessary in these and other areas expecting heavy foot traffic. Once again, MAPEI had the answer: **Mapecfloor Finish 53 W/L** where a high-gloss finish was desired, and **Mapecfloor Finish 54 W/S** for semi-gloss. These transparent, protective, aliphatic polyurethane finishing coats are formulated to help maintain the epoxy-resin flooring's high aesthetic for years to come.



### [Tile work, shower rooms and carpet](#)

Installers from Jacques Lamont Ltd. worked with the Green Squared-certified **MAPEI Ultralite® Mortar**, a premium, lightweight thin-set mortar with BioBlock® technology for mold and mildew resistance for the wall tiling in shower rooms and other wet areas. The floors in these areas were done using Mapecoat Universal with **Mapecfloor DQ** decorative quartz and **Mapecfloor Finish 53 W/L**. They also used **Ultrabond ECO® 811** high-performance, acrylic latex adhesive for installation of the 1,300 yards (1 189 m) of carpet

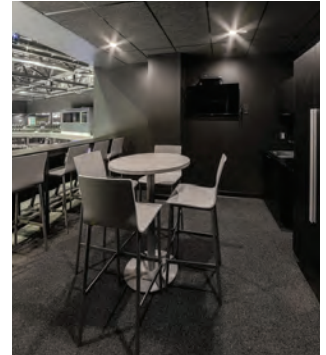
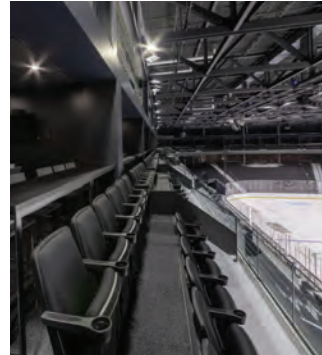
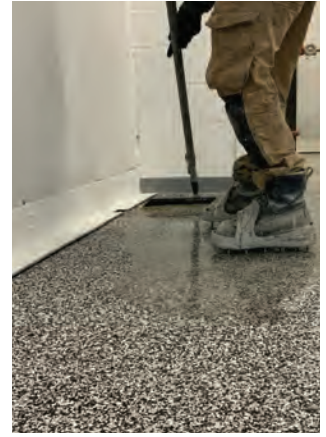


tile in the private loges. As with every other MAPEI installation product used in the Centre Slush Puppie, these products are Indoor Air Quality Certified as “Indoor Advantage Gold” by SCS Global Services for their low-VOC (volatile organic compounds) emissions.



Meanwhile, for the Olympiques, their new home is sweet indeed. 2021 marks 48 years since the team was inaugurated in the QMJHL, where young men aged 16 to 21 vie for the chance to get noticed by pro scouts, and maybe reach the National Hockey League someday (like current NHLers Jean-Gabriel Pageau, Claude Giroux and the Montreal Canadiens' alternate captain, Paul Byron.)

Now that the team is settled in to their new home, maybe the professionalism that went into the Centre Slush Puppie construction will inspire the players to reach even greater heights? As official team sponsors, we at MAPEI Canada wish them much success in the future. May their new arena's rafters soon be fitted with a second Memorial Cup banner to accompany the one captured by the 1997 team. Now, wouldn't that make a great finishing touch?! To you, *les Olympiques*, we pass the torch.



#### PROJECT INFORMATION:

**Project category:** Sport Facilities

**Years of construction:** 2020-21

**Years of MAPEI involvement:** 2020-21

**MAPEI coordinator:** Justin Lafontaine

**MAPEI distributor:** Prosol Inc.

**Project owner:** City of Gatineau and Vision Multisports Outaouais (VMSO)

**Project Manager:** Martin Beaudoin

**Main Contractor:** Beaudoin Canada

**Flooring Contractor:** Construction JPL

**Installer Companies:** Idéal Epoxy (cementitious and resinous flooring); Jacques Lamont Ltd. (tile and carpet)

**Architect:** Architecture49 Inc.

**Photography:** Christian Lalonde (Photolux Studio) and Justin Lafontaine



MAPEI Canada

**MAPEI Inc.**

2900 Francis Hughes  
Laval, Québec  
H7L 3J5

**Technical Services**

1-800-361-9309

**Customer Service**

1-800-42-MAPEI (1-800-426-2734)

Copyright ©2021 by MAPEI Inc. ("MAPEI") and all rights are reserved. All intellectual property rights and other information contained in this document are the exclusive property of MAPEI (or its parent or related companies), unless otherwise noted. No part of this document may be reproduced or transmitted in any form without the prior written consent of MAPEI.

Printed in Canada.

